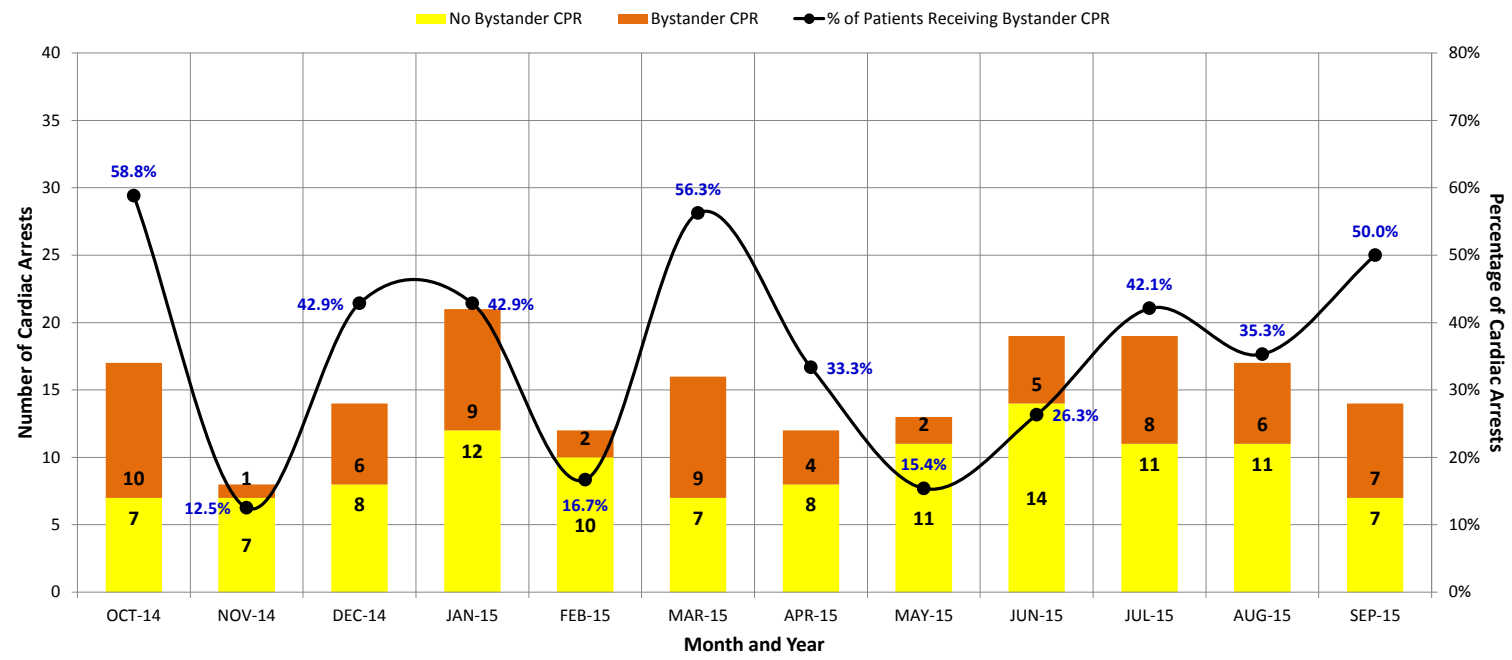
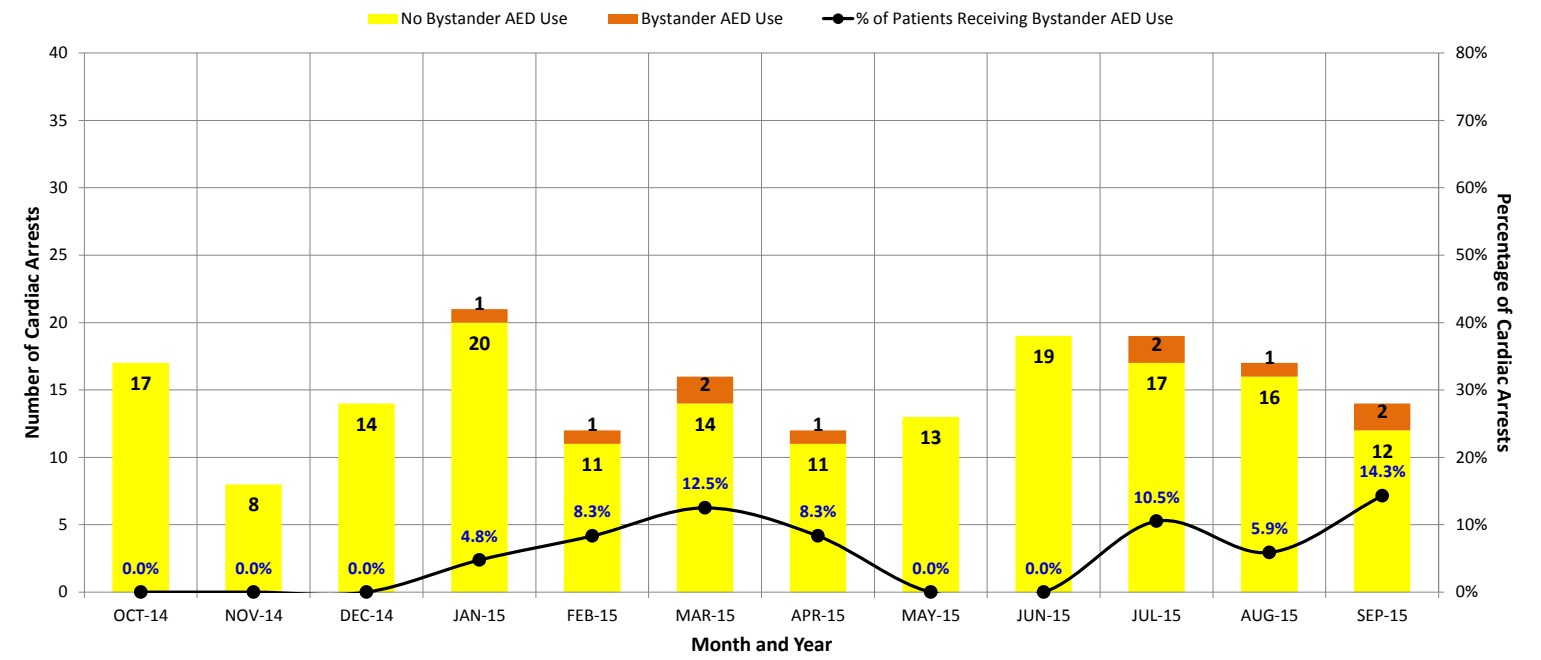


**District of Columbia Fire and Emergency Medical Services Department**  
**Cardiac Arrest Bystander CPR and AED Use, Outcomes and Return of Spontaneous Circulation (ROSC) by Month - FY 2015 (10/1/2014 to 9/30/2015)**

**Cardiac Arrests Witnessed by Bystanders (CPR)**



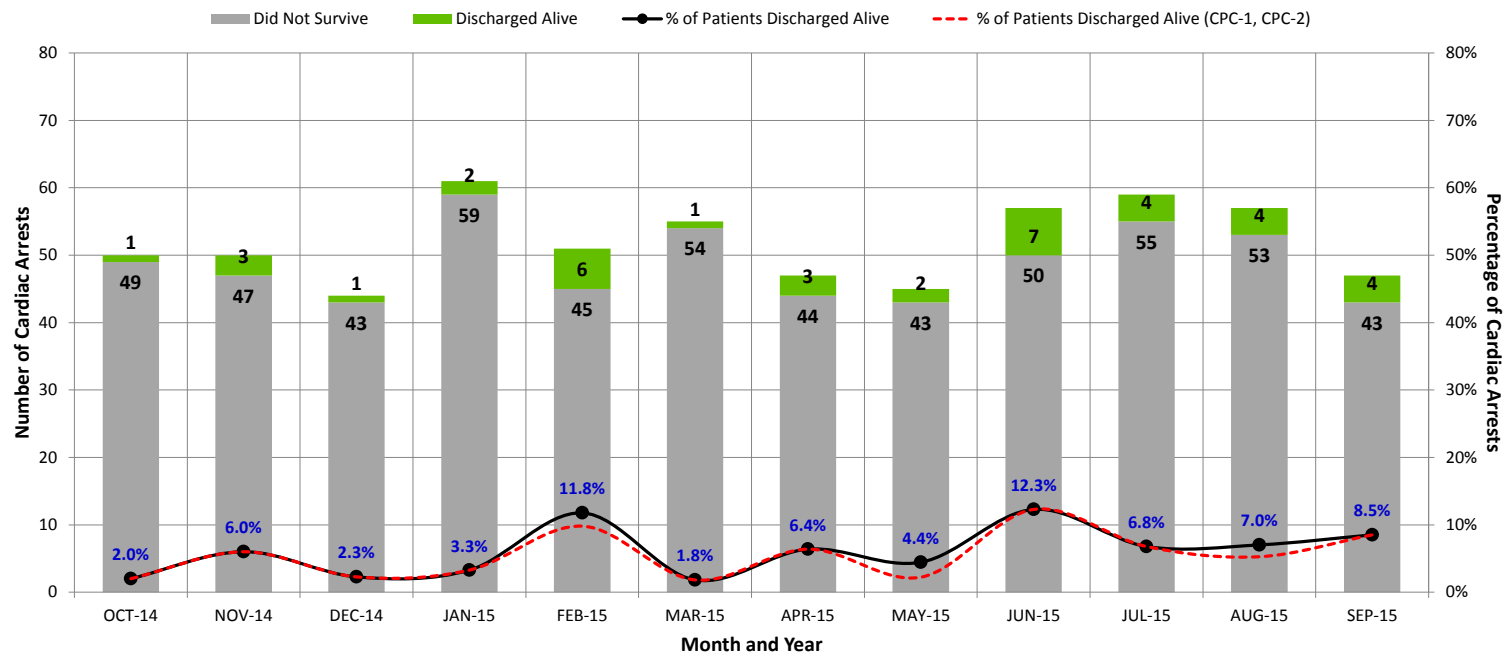
**Cardiac Arrests Witnessed by Bystanders (AED Use)**



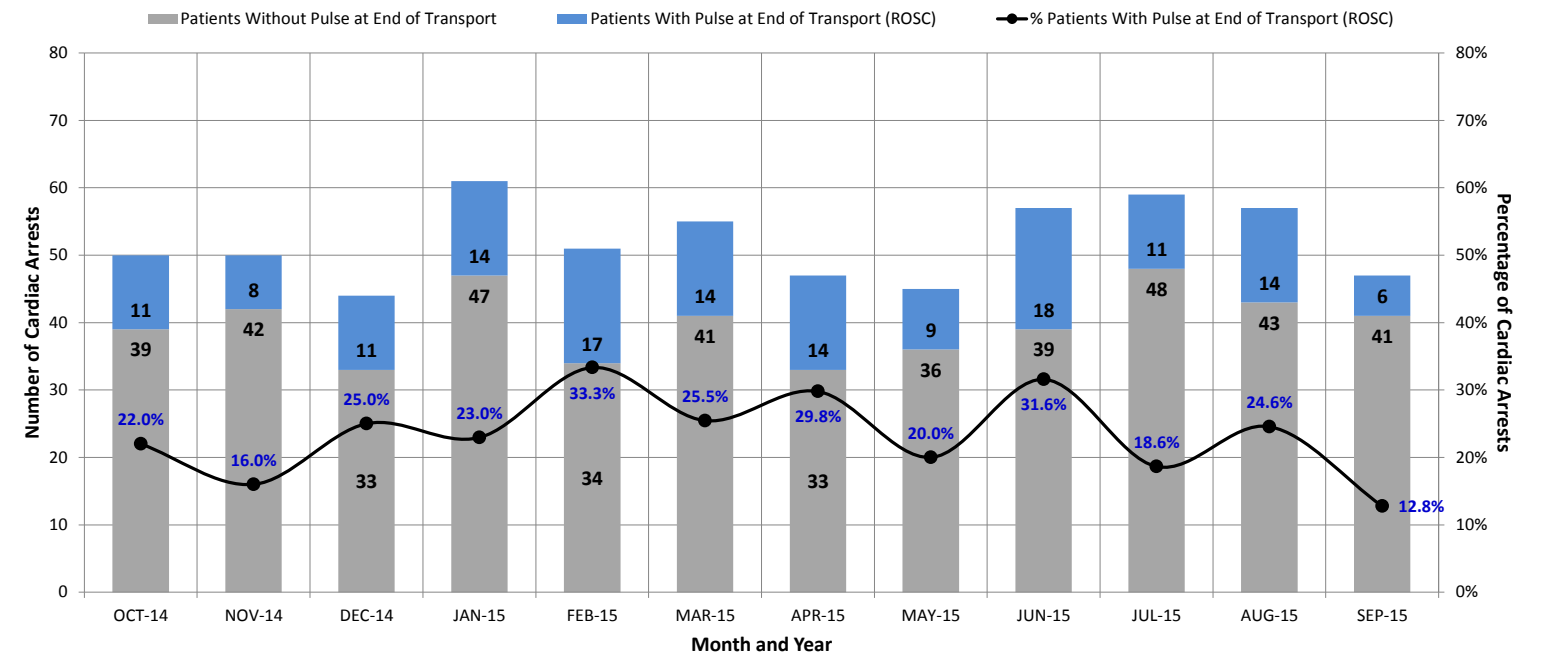
## District of Columbia Fire and Emergency Medical Services Department

### Cardiac Arrest Bystander CPR and AED Use, Outcomes and Return of Spontaneous Circulation (ROSC) by Month - FY 2015 (10/1/2014 to 9/30/2015)

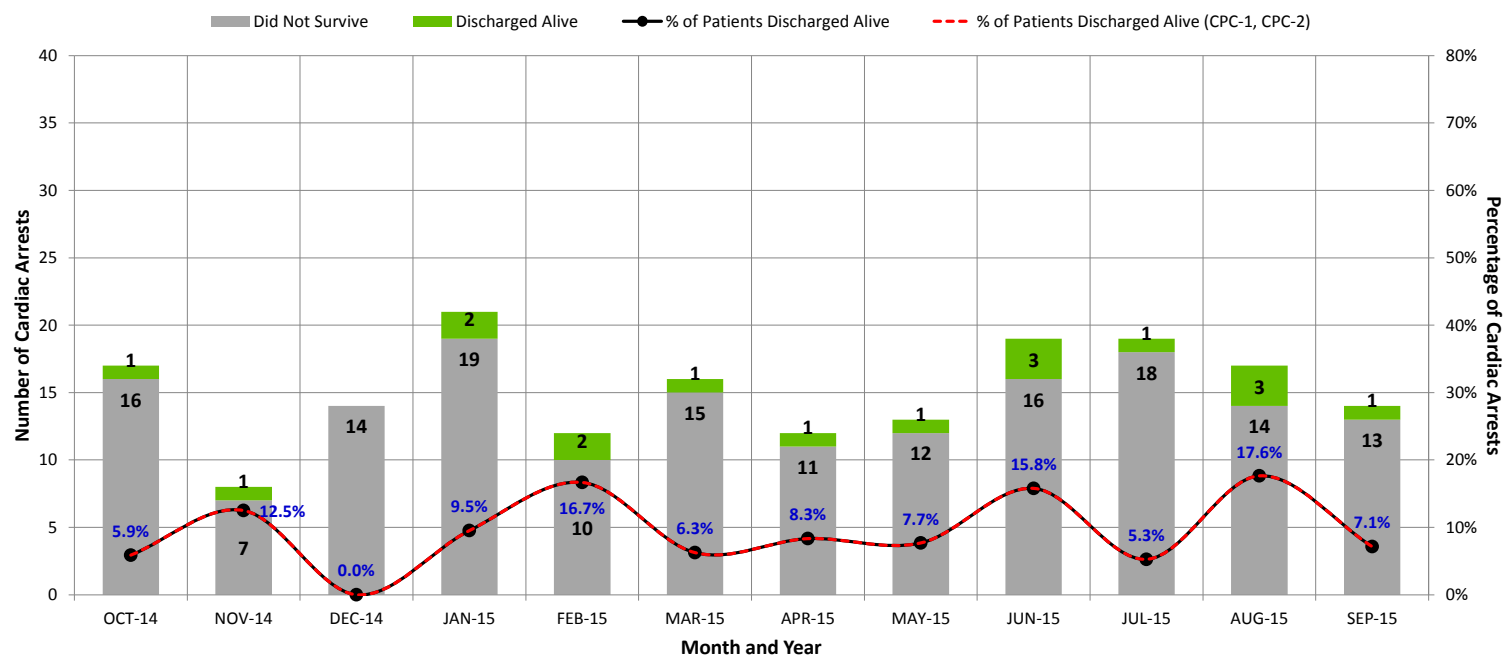
**Panel 1: All Cardiac Arrests (Outcome)**



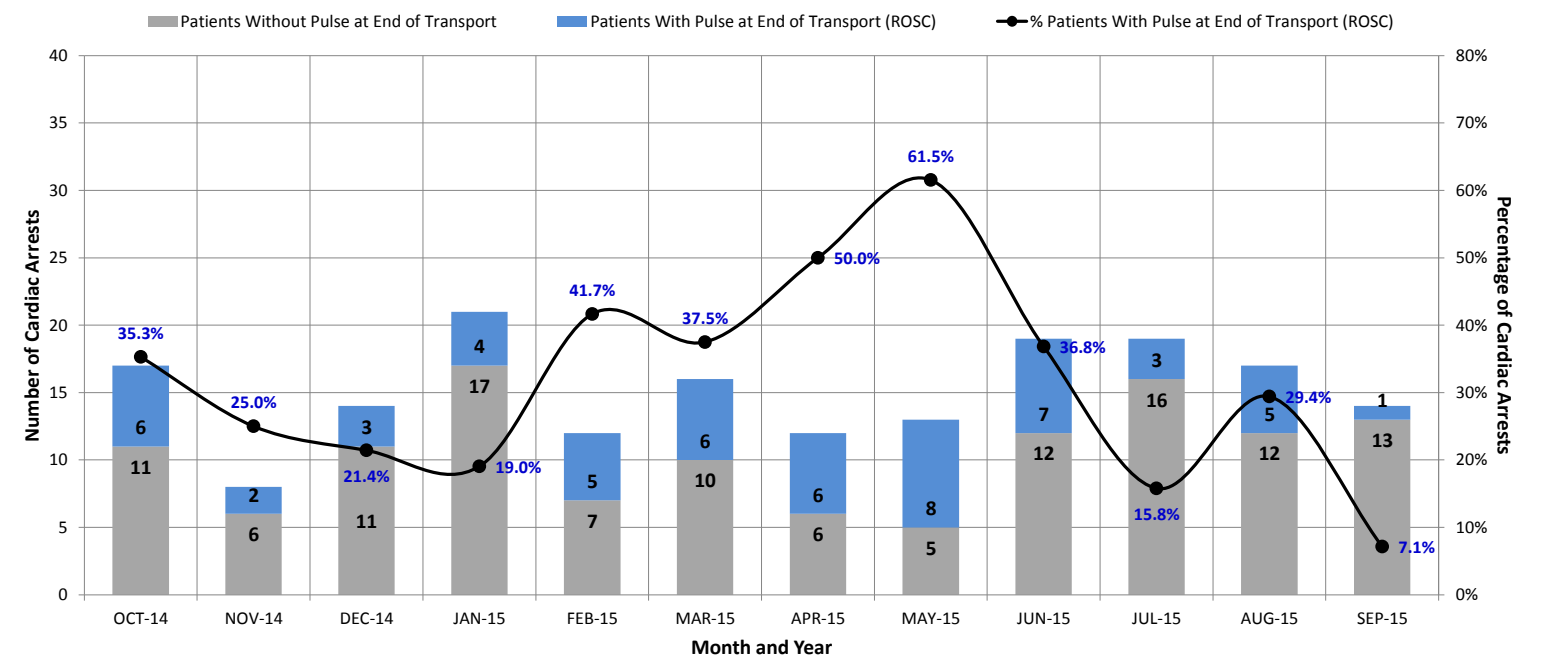
**Panel 1-A: All Cardiac Arrests (ROSC)**



**Panel 2: Cardiac Arrests Witnessed by Bystanders (Outcome)**



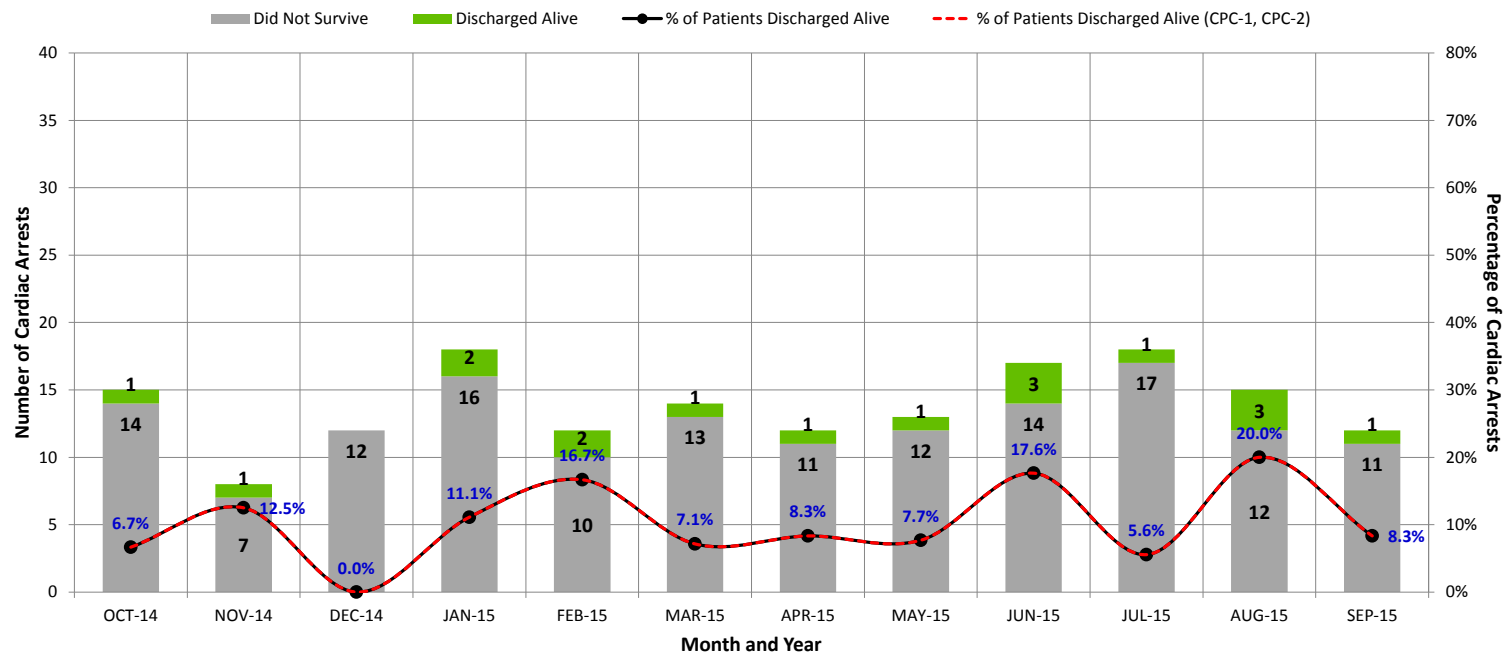
**Panel 2-A: Cardiac Arrests Witnessed by Bystanders (ROSC)**



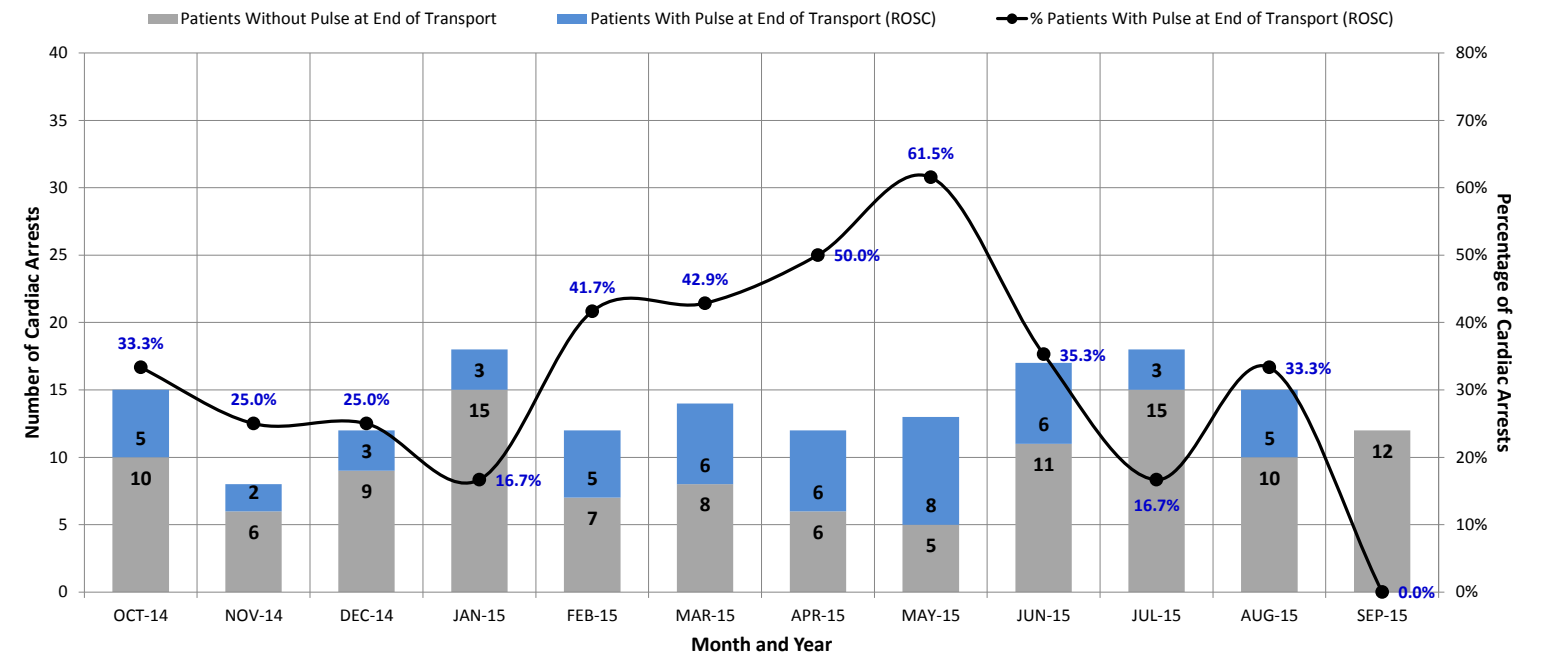
## District of Columbia Fire and Emergency Medical Services Department

### Cardiac Arrest Bystander CPR and AED Use, Outcomes and Return of Spontaneous Circulation (ROSC) by Month - FY 2015 (10/1/2014 to 9/30/2015)

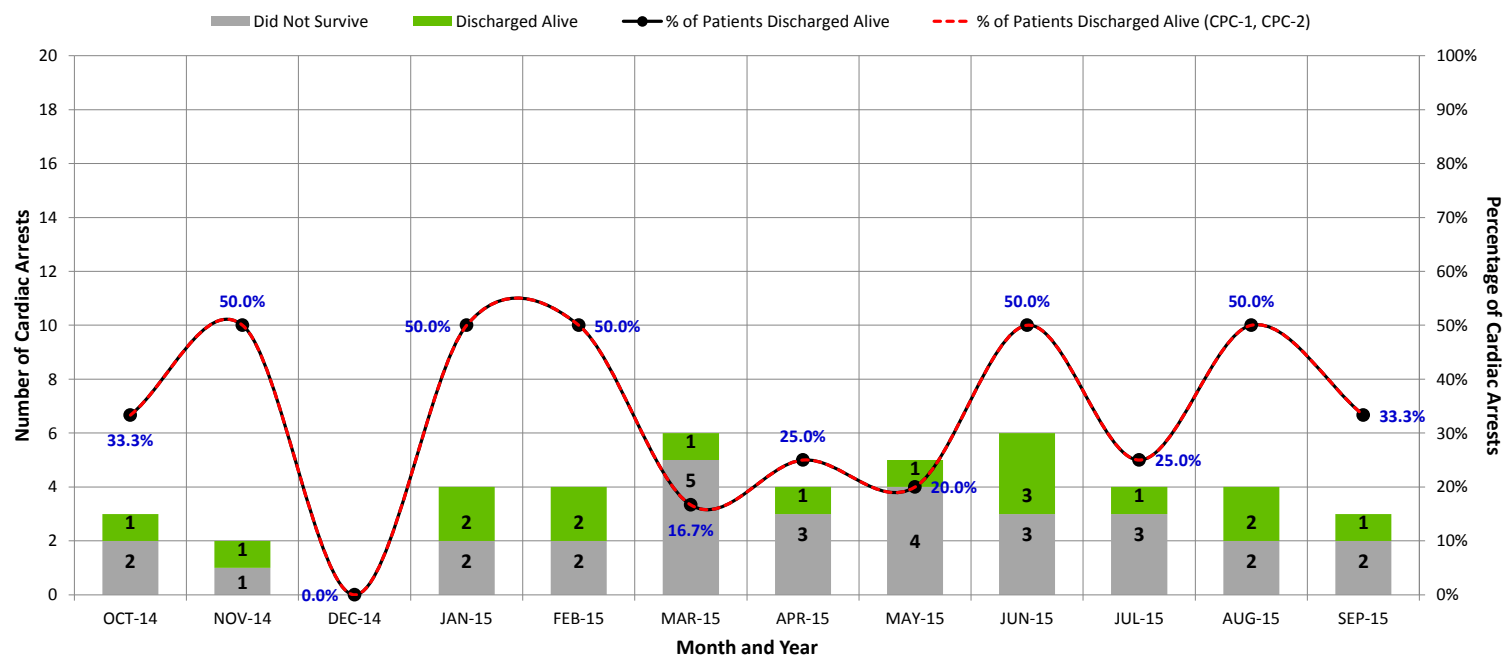
**Panel 3: Cardiac Arrests (of Cardiac Etiology) Witnessed by Bystanders (Outcome)**



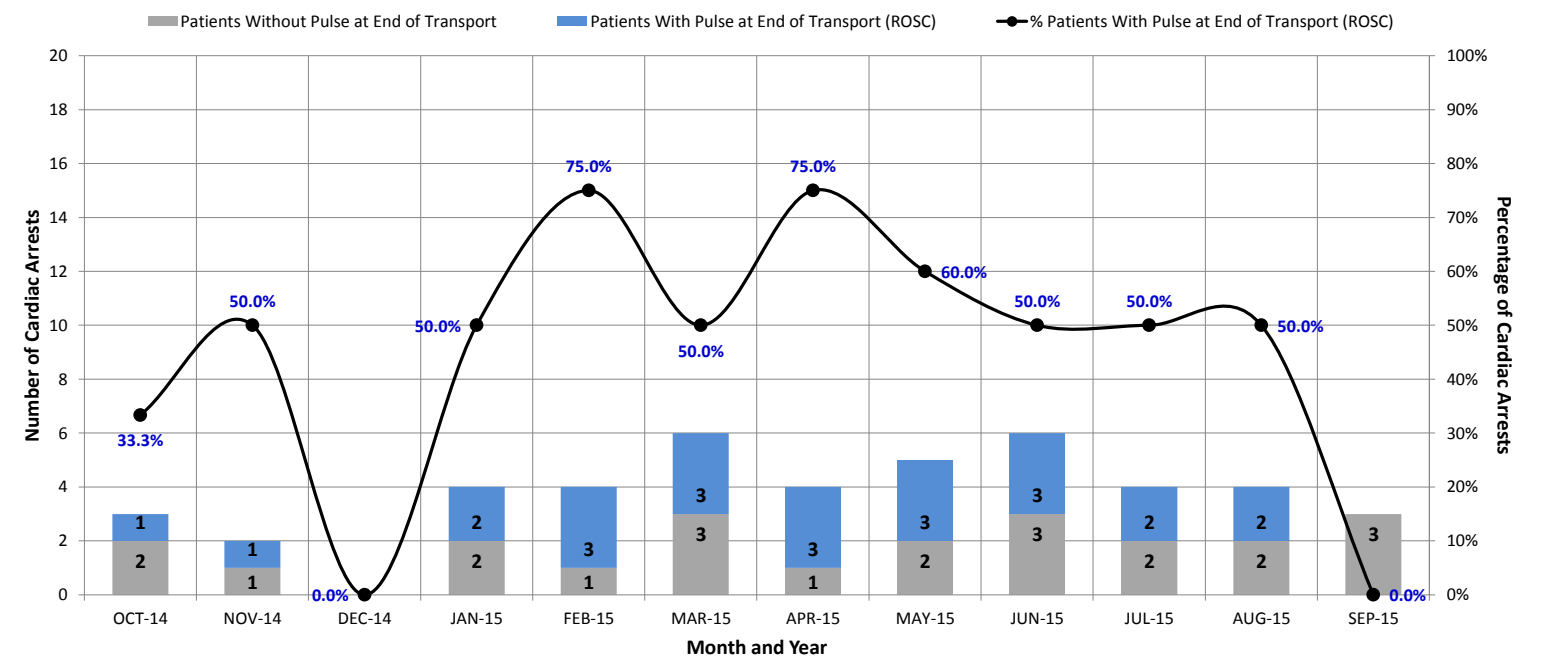
**Panel 3-A: Cardiac Arrests (of Cardiac Etiology) Witnessed by Bystanders (ROSC)**



**Panel 4: Cardiac Arrests (Cardiac Etiology/"Shockable" Rhythm) Witnessed by Bystanders (Outcome)**



**Panel 4-A: Cardiac Arrests (Cardiac Etiology/"Shockable" Rhythm) Witnessed by Bystanders (ROSC)**



**District of Columbia Fire and Emergency Medical Services Department**

**Cardiac Arrest Bystander CPR and AED Use, Outcomes and Return of Spontaneous Circulation (ROSC) - FY 2015 (Q1 to Q4)**

<b>Cardiac Arrests Witnessed by Bystanders (CPR) KPI</b>	<b>Q1-FY-15</b>	<b>Q2-FY-15</b>	<b>Q3-FY-15</b>	<b>Q4-FY-15</b>	<b>FY-15 (TOTAL)</b>
Total Cardiac Arrests	144	167	149	163	623
Witnessed Cardiac Arrests	62	88	75	74	299
<b>NOT Witnessed by EMS</b>	<b>39</b>	<b>49</b>	<b>44</b>	<b>50</b>	<b>182</b>
<b>Who Initiated CPR?</b>					
Not Applicable	0	0	0	0	0
<b>Lay Person</b>	<b>4</b>	<b>5</b>	<b>7</b>	<b>11</b>	<b>27</b>
<b>Lay Person Family Member</b>	<b>6</b>	<b>4</b>	<b>0</b>	<b>3</b>	<b>13</b>
<b>Lay Person Medical Provider</b>	<b>7</b>	<b>11</b>	<b>4</b>	<b>7</b>	<b>29</b>
First Responder (non-transport provider)	2	11	12	9	34
Responding EMS Personnel	20	18	21	20	79
<b>CPR Initiated by Bystanders</b>	<b>17</b>	<b>20</b>	<b>11</b>	<b>21</b>	<b>69</b>
<b>CPR Initiated by Bystanders, Limited to Arrest before Arrival of EMS Personnel.</b>	<b>43.6%</b>	<b>40.8%</b>	<b>25.0%</b>	<b>42.0%</b>	<b>37.9%</b>

<b>Cardiac Arrests Witnessed by Bystanders (AED Use) KPI</b>	<b>Q1-FY-15</b>	<b>Q2-FY-15</b>	<b>Q3-FY-15</b>	<b>Q4-FY-15</b>	<b>FY-15 (TOTAL)</b>
Total Cardiac Arrests	144	167	149	163	623
Witnessed Cardiac Arrests	62	88	75	74	299
<b>NOT Witnessed by EMS</b>	<b>39</b>	<b>49</b>	<b>44</b>	<b>50</b>	<b>182</b>
AED applied prior to EMS arrival	2	16	14	19	51
<b>Who Applied AED?</b>					
<b>Lay Person</b>	<b>0</b>	<b>0</b>	<b>0</b>	<b>1</b>	<b>1</b>
<b>Lay Person Family Member</b>	<b>0</b>	<b>0</b>	<b>0</b>	<b>0</b>	<b>0</b>
<b>Lay Person Medical Provider</b>	<b>0</b>	<b>4</b>	<b>1</b>	<b>4</b>	<b>9</b>
First Responder (non-transport provider)	2	12	13	14	41
Police Applied AED	1	4	4	0	9
Unknown					
<b>AED Used by Bystanders</b>	<b>0</b>	<b>4</b>	<b>1</b>	<b>5</b>	<b>10</b>
<b>AED Used by Bystanders, Limited to Arrest before Arrival of EMS Personnel.</b>	<b>0.0%</b>	<b>8.2%</b>	<b>2.3%</b>	<b>10.0%</b>	<b>5.5%</b>

**District of Columbia Fire and Emergency Medical Services Department**

**Cardiac Arrest Bystander CPR and AED Use, Outcomes and Return of Spontaneous Circulation (ROSC) - FY 2015 (Q1 to Q4)**

<b>Panel 1: All Cardiac Arrests (Outcome)</b>	<b>Q1-FY-15</b>	<b>Q2-FY-15</b>	<b>Q3-FY-15</b>	<b>Q4-FY-15</b>	<b>FY-15 (TOTAL)</b>
<b>Total Cardiac Arrests</b>	<b>144</b>	<b>167</b>	<b>149</b>	<b>163</b>	<b>623</b>
<b>Transported to ED</b>	<b>144</b>	<b>166</b>	<b>133</b>	<b>143</b>	<b>586</b>
Pronounced Dead in ED	59	71	43	44	217
Ongoing Resuscitation in ED	85	95	90	99	369
<b>Admitted to Hospital</b>	<b>29</b>	<b>41</b>	<b>40</b>	<b>42</b>	<b>152</b>
Died in Hospital	15	20	15	24	74
Discharged alive	5	9	12	12	38
Discharged alive (CPC-1 or CPC-2)	5	8	11	11	35
Discharged alive (CPC-3, CPC-4 or Unk)	0	1	1	1	3
Died in Hospital after DNR	9	12	13	6	40
Discharged alive after DNR	0	0	0	0	0
Discharged alive after DNR (CPC-1 or CPC-2)	0	0	0	0	0
Discharged alive after DNR (CPC-3, CPC-4 or Unk)	0	0	0	0	0
<b>Total Discharged Alive</b>	<b>5</b>	<b>9</b>	<b>12</b>	<b>12</b>	<b>38</b>
<b>Total Discharged Alive (CPC-1 or CPC-2)</b>	<b>5</b>	<b>8</b>	<b>11</b>	<b>11</b>	<b>35</b>
<b>Total Discharged Alive (CPC-3, CPC-4 or Unk)</b>	<b>0</b>	<b>1</b>	<b>1</b>	<b>1</b>	<b>3</b>
<b>Overall Survival Rate.</b>	<b>3.5%</b>	<b>5.4%</b>	<b>8.1%</b>	<b>7.4%</b>	<b>6.1%</b>
<b>Overall Survival Rate (CPC-1 or CPC-2).</b>	<b>3.5%</b>	<b>4.8%</b>	<b>7.4%</b>	<b>6.7%</b>	<b>5.6%</b>

**District of Columbia Fire and Emergency Medical Services Department**

**Cardiac Arrest Bystander CPR and AED Use, Outcomes and Return of Spontaneous Circulation (ROSC) - FY 2015 (Q1 to Q4)**

<b>Panel 2: Cardiac Arrests Witnessed by Bystanders (Outcome) KPI</b>	<b>Q1-FY-15</b>	<b>Q2-FY-15</b>	<b>Q3-FY-15</b>	<b>Q4-FY-15</b>	<b>FY-15 (TOTAL)</b>
Total Cardiac Arrests	144	167	149	163	623
Witnessed Cardiac Arrests	62	88	75	74	299
<b>NOT Witnessed by EMS</b>	<b>39</b>	<b>49</b>	<b>44</b>	<b>50</b>	<b>182</b>
<b>Transported to ED</b>	<b>39</b>	<b>49</b>	<b>44</b>	<b>49</b>	<b>181</b>
Pronounced Dead in ED	12	15	6	15	48
Ongoing Resuscitation in ED	27	34	38	34	133
<b>Admitted to Hospital</b>	<b>10</b>	<b>18</b>	<b>20</b>	<b>17</b>	<b>65</b>
Died in Hospital	7	7	9	10	33
Discharged alive	2	5	5	5	17
Discharged alive (CPC-1 or CPC-2)	2	5	5	5	17
Discharged alive (CPC-3, CPC-4 or Unk)	0	0	0	0	0
Died in Hospital after DNR	1	6	6	2	15
Discharged alive after DNR	0	0	0	0	0
Discharged alive after DNR (CPC-1 or CPC-2)	0	0	0	0	0
Discharged alive after DNR (CPC-3, CPC-4 or Unk)	0	0	0	0	0
<b>Total Discharged Alive</b>	<b>2</b>	<b>5</b>	<b>5</b>	<b>5</b>	<b>17</b>
<b>Total Discharged Alive (CPC-1 or CPC-2)</b>	<b>2</b>	<b>5</b>	<b>5</b>	<b>5</b>	<b>17</b>
<b>Total Discharged Alive (CPC-3, CPC-4 or Unk)</b>	<b>0</b>	<b>0</b>	<b>0</b>	<b>0</b>	<b>0</b>
<b>Overall Survival Rate.</b>	<b>5.1%</b>	<b>10.2%</b>	<b>11.4%</b>	<b>10.0%</b>	<b>9.3%</b>
<b>Overall Survival Rate (CPC-1 or CPC-2).</b>	<b>5.1%</b>	<b>10.2%</b>	<b>11.4%</b>	<b>10.0%</b>	<b>9.3%</b>

**District of Columbia Fire and Emergency Medical Services Department**

**Cardiac Arrest Bystander CPR and AED Use, Outcomes and Return of Spontaneous Circulation (ROSC) - FY 2015 (Q1 to Q4)**

<b>Panel 3: Cardiac Arrests (of Cardiac Etiology) Witnessed by Bystanders (Outcome)</b>	<b>Q1-FY-15</b>	<b>Q2-FY-15</b>	<b>Q3-FY-15</b>	<b>Q4-FY-15</b>	<b>FY-15 (TOTAL)</b>
Total Cardiac Arrests	144	167	149	163	<b>623</b>
Witnessed Cardiac Arrests	62	88	75	74	<b>299</b>
NOT Witnessed by EMS	39	49	44	50	<b>182</b>
<b>Presumed Cardiac Etiology</b>	<b>35</b>	<b>44</b>	<b>42</b>	<b>45</b>	<b>166</b>
<b>Transported to ED</b>	<b>35</b>	<b>44</b>	<b>42</b>	<b>44</b>	<b>165</b>
Pronounced Dead in ED	11	13	6	15	<b>45</b>
Ongoing Resuscitation in ED	24	31	36	29	<b>120</b>
<b>Admitted to Hospital</b>	<b>9</b>	<b>16</b>	<b>20</b>	<b>14</b>	<b>59</b>
Died in Hospital	6	5	9	7	<b>27</b>
Discharged alive	2	5	5	5	<b>17</b>
Discharged alive (CPC-1 or CPC-2)	2	5	5	5	<b>17</b>
Discharged alive (CPC-3, CPC-4 or Unk)	0	0	0	0	<b>0</b>
Died in Hospital after DNR	1	6	6	2	<b>15</b>
Discharged alive after DNR	0	0	0	0	<b>0</b>
Discharged alive after DNR (CPC-1 or CPC-2)	0	0	0	0	<b>0</b>
Discharged alive after DNR (CPC-3, CPC-4 or Unk)	0	0	0	0	<b>0</b>
<b>Total Discharged Alive</b>	<b>2</b>	<b>5</b>	<b>5</b>	<b>5</b>	<b>17</b>
<b>Total Discharged Alive (CPC-1 or CPC-2)</b>	<b>2</b>	<b>5</b>	<b>5</b>	<b>5</b>	<b>17</b>
<b>Total Discharged Alive (CPC-3, CPC-4 or Unk)</b>	<b>0</b>	<b>0</b>	<b>0</b>	<b>0</b>	<b>0</b>
<b>Overall Survival Rate.</b>	<b>5.7%</b>	<b>11.4%</b>	<b>11.9%</b>	<b>11.1%</b>	<b>10.2%</b>
<b>Overall Survival Rate (CPC-1 or CPC-2).</b>	<b>5.7%</b>	<b>11.4%</b>	<b>11.9%</b>	<b>11.1%</b>	<b>10.2%</b>

**District of Columbia Fire and Emergency Medical Services Department**

**Cardiac Arrest Bystander CPR and AED Use, Outcomes and Return of Spontaneous Circulation (ROSC) - FY 2015 (Q1 to Q4)**

<b>Panel 4: Cardiac Arrests (Cardiac Etiology/"Shockable" Rhythm) Witnessed by Bystanders (Outcome) KPI</b>	<b>Q1-FY-15</b>	<b>Q2-FY-15</b>	<b>Q3-FY-15</b>	<b>Q4-FY-15</b>	<b>FY-15 (TOTAL)</b>
Total Cardiac Arrests	144	167	149	163	<b>623</b>
Witnessed Cardiac Arrests	62	88	75	74	<b>299</b>
NOT Witnessed by EMS	39	49	44	50	<b>182</b>
Presumed Cardiac Etiology	35	44	42	45	<b>166</b>
<b>"Shockable" Rhythm (VFib/VTach/Unk)</b>	<b>5</b>	<b>14</b>	<b>15</b>	<b>11</b>	<b>45</b>
<b>Transported to ED</b>	<b>5</b>	<b>14</b>	<b>15</b>	<b>11</b>	<b>45</b>
Pronounced Dead in ED	2	2	2	5	<b>11</b>
Ongoing Resuscitation in ED	3	12	13	6	<b>34</b>
<b>Admitted to Hospital</b>	<b>2</b>	<b>7</b>	<b>9</b>	<b>5</b>	<b>23</b>
Died in Hospital	0	2	3	1	<b>6</b>
Discharged alive	2	5	5	4	<b>16</b>
Discharged alive (CPC-1 or CPC-2)	2	5	5	4	<b>16</b>
Discharged alive (CPC-3, CPC-4 or Unk)	0	0	0	0	<b>0</b>
Died in Hospital after DNR	0	0	1	0	<b>1</b>
Discharged alive after DNR	0	0	0	0	<b>0</b>
Discharged alive after DNR (CPC-1 or CPC-2)	0	0	0	0	<b>0</b>
Discharged alive after DNR (CPC-3, CPC-4 or Unk)	0	0	0	0	<b>0</b>
<b>Total Discharged Alive</b>	<b>2</b>	<b>5</b>	<b>5</b>	<b>4</b>	<b>16</b>
<b>Total Discharged Alive (CPC-1 or CPC-2)</b>	<b>2</b>	<b>5</b>	<b>5</b>	<b>4</b>	<b>16</b>
<b>Total Discharged Alive (CPC-3, CPC-4 or Unk)</b>	<b>0</b>	<b>0</b>	<b>0</b>	<b>0</b>	<b>0</b>
<b>Overall Survival Rate.</b>	<b>40.0%</b>	<b>35.7%</b>	<b>33.3%</b>	<b>36.4%</b>	<b>35.6%</b>
<b>Overall Survival Rate (CPC-1 or CPC-2).</b>	<b>40.0%</b>	<b>35.7%</b>	<b>33.3%</b>	<b>36.4%</b>	<b>35.6%</b>



**District of Columbia Fire and Emergency Medical Services Department**

**Cardiac Arrest Bystander CPR and AED Use, Outcomes and Return of Spontaneous Circulation (ROSC) - FY 2015 (Q1 to Q4)**

<b>Panel 1-A: All Cardiac Arrests (ROSC)</b>	<b>Q1-FY-15</b>	<b>Q2-FY-15</b>	<b>Q3-FY-15</b>	<b>Q4-FY-15</b>	<b>FY-15 (TOTAL)</b>
<b>Total Cardiac Arrests</b>	<b>144</b>	<b>167</b>	<b>149</b>	<b>163</b>	<b>623</b>
Pronounced Dead Before Transport	0	1	16	20	37
<b>Transported to ED</b>	<b>144</b>	<b>166</b>	<b>133</b>	<b>143</b>	<b>586</b>
Pulseless at End of Transport	114	121	92	112	439
<b>Pulse at End of Transport</b>	<b>30</b>	<b>45</b>	<b>41</b>	<b>31</b>	<b>147</b>
Pronounced Dead in ED	0	1	0	1	2
Ongoing Resuscitation in ED	30	44	41	30	145
<b>Admitted to Hospital</b>	<b>23</b>	<b>30</b>	<b>30</b>	<b>23</b>	<b>106</b>
Died in Hospital	11	14	11	11	47
Discharged alive	3	7	10	9	29
Discharged alive (CPC-1 or CPC-2)	3	7	9	8	27
Discharged alive (CPC-3, CPC-4 or Unk)	0	0	1	1	2
Died in Hospital after DNR	9	9	9	3	30
Discharged alive after DNR	0	0	0	0	0
Discharged alive after DNR (CPC-1 or CPC-2)	0	0	0	0	0
Discharged alive after DNR (CPC-3, CPC-4 or Unk)	0	0	0	0	0
<b>Total Discharged Alive</b>	<b>3</b>	<b>7</b>	<b>10</b>	<b>9</b>	<b>29</b>
<b>Total Discharged Alive (CPC-1 or CPC-2)</b>	<b>3</b>	<b>7</b>	<b>9</b>	<b>8</b>	<b>27</b>
<b>Total Discharged Alive (CPC-3, CPC-4 or Unk)</b>	<b>0</b>	<b>0</b>	<b>1</b>	<b>1</b>	<b>2</b>
<b>Pulse at End of Transport (Pre-Hospital ROSC rate).</b>	<b>20.8%</b>	<b>26.9%</b>	<b>27.5%</b>	<b>19.0%</b>	<b>23.6%</b>
<b>Survival Rate of EMS Patients with Pulse at End of Transport Admitted to Hospital.</b>	<b>13.0%</b>	<b>23.3%</b>	<b>33.3%</b>	<b>39.1%</b>	<b>27.4%</b>
<b>Survival Rate of EMS Patients with Pulse at End of Transport Admitted to Hospital (CPC-1 or CPC-2).</b>	<b>13.0%</b>	<b>23.3%</b>	<b>30.0%</b>	<b>34.8%</b>	<b>25.5%</b>

**District of Columbia Fire and Emergency Medical Services Department**

**Cardiac Arrest Bystander CPR and AED Use, Outcomes and Return of Spontaneous Circulation (ROSC) - FY 2015 (Q1 to Q4)**

<b>Panel 2-A: Cardiac Arrests Witnessed by Bystanders (ROSC)</b>	<b>Q1-FY-15</b>	<b>Q2-FY-15</b>	<b>Q3-FY-15</b>	<b>Q4-FY-15</b>	<b>FY-15 (TOTAL)</b>
Total Cardiac Arrests	144	167	149	163	623
Witnessed Cardiac Arrests	62	88	75	74	299
<b>NOT Witnessed by EMS</b>	<b>39</b>	<b>49</b>	<b>44</b>	<b>50</b>	<b>182</b>
Pronounced Dead Before Transport	0	0	0	1	1
<b>Transported to ED</b>	<b>39</b>	<b>49</b>	<b>44</b>	<b>49</b>	<b>181</b>
Pulseless at End of Transport	28	34	23	40	125
<b>Pulse at End of Transport</b>	<b>11</b>	<b>15</b>	<b>21</b>	<b>9</b>	<b>56</b>
Pronounced Dead in ED	0	1	0	0	1
Ongoing Resuscitation in ED	11	14	21	9	55
<b>Admitted to Hospital</b>	<b>9</b>	<b>12</b>	<b>16</b>	<b>9</b>	<b>46</b>
Died in Hospital	6	4	8	5	23
Discharged alive	2	5	5	3	15
Discharged alive (CPC-1 or CPC-2)	2	5	5	3	15
Discharged alive (CPC-3, CPC-4 or Unk)	0	0	0	0	0
Died in Hospital after DNR	1	3	3	1	8
Discharged alive after DNR	0	0	0	0	0
Discharged alive after DNR (CPC-1 or CPC-2)	0	0	0	0	0
Discharged alive after DNR (CPC-3, CPC-4 or Unk)	0	0	0	0	0
<b>Total Discharged Alive</b>	<b>2</b>	<b>5</b>	<b>5</b>	<b>3</b>	<b>15</b>
<b>Total Discharged Alive (CPC-1 or CPC-2)</b>	<b>2</b>	<b>5</b>	<b>5</b>	<b>3</b>	<b>15</b>
<b>Total Discharged Alive (CPC-3, CPC-4 or Unk)</b>	<b>0</b>	<b>0</b>	<b>0</b>	<b>0</b>	<b>0</b>
<b>Pulse at End of Transport (Pre-Hospital ROSC rate).</b>	<b>28.2%</b>	<b>30.6%</b>	<b>47.7%</b>	<b>18.0%</b>	<b>30.8%</b>
<b>Survival Rate of EMS Patients with Pulse at End of Transport Admitted to Hospital.</b>	<b>22.2%</b>	<b>41.7%</b>	<b>31.3%</b>	<b>33.3%</b>	<b>32.6%</b>
<b>Survival Rate of EMS Patients with Pulse at End of Transport Admitted to Hospital (CPC-1 or CPC-2).</b>	<b>22.2%</b>	<b>41.7%</b>	<b>31.3%</b>	<b>33.3%</b>	<b>32.6%</b>

**District of Columbia Fire and Emergency Medical Services Department**

**Cardiac Arrest Bystander CPR and AED Use, Outcomes and Return of Spontaneous Circulation (ROSC) - FY 2015 (Q1 to Q4)**

<b>Panel 3-A: Cardiac Arrests (of Cardiac Etiology) Witnessed by Bystanders (ROSC)</b>	<b>Q1-FY-15</b>	<b>Q2-FY-15</b>	<b>Q3-FY-15</b>	<b>Q4-FY-15</b>	<b>FY-15 (TOTAL)</b>
Total Cardiac Arrests	144	167	149	163	623
Witnessed Cardiac Arrests	62	88	75	74	299
NOT Witnessed by EMS	39	49	44	50	182
<b>Presumed Cardiac Etiology</b>	<b>35</b>	<b>44</b>	<b>42</b>	<b>45</b>	<b>166</b>
Pronounced Dead Before Transport	0	0	0	1	1
<b>Transported to ED</b>	<b>35</b>	<b>44</b>	<b>42</b>	<b>44</b>	<b>165</b>
Pulseless at End of Transport	25	30	22	36	113
<b>Pulse at End of Transport</b>	<b>10</b>	<b>14</b>	<b>20</b>	<b>8</b>	<b>52</b>
Pronounced Dead in ED	0	1	0	0	1
Ongoing Resuscitation in ED	10	13	20	8	51
<b>Admitted to Hospital</b>	<b>8</b>	<b>11</b>	<b>16</b>	<b>8</b>	<b>43</b>
Died in Hospital	5	3	8	4	20
Discharged alive	2	5	5	3	15
Discharged alive (CPC-1 or CPC-2)	2	5	5	3	15
Discharged alive (CPC-3, CPC-4 or Unk)	0	0	0	0	0
Died in Hospital after DNR	1	3	3	1	8
Discharged alive after DNR	0	0	0	0	0
Discharged alive after DNR (CPC-1 or CPC-2)	0	0	0	0	0
Discharged alive after DNR (CPC-3, CPC-4 or Unk)	0	0	0	0	0
<b>Total Discharged Alive</b>	<b>2</b>	<b>5</b>	<b>5</b>	<b>3</b>	<b>15</b>
<b>Total Discharged Alive (CPC-1 or CPC-2)</b>	<b>2</b>	<b>5</b>	<b>5</b>	<b>3</b>	<b>15</b>
<b>Total Discharged Alive (CPC-3, CPC-4 or Unk)</b>	<b>0</b>	<b>0</b>	<b>0</b>	<b>0</b>	<b>0</b>
<b>Pulse at End of Transport (Pre-Hospital ROSC rate).</b>	<b>28.6%</b>	<b>31.8%</b>	<b>47.6%</b>	<b>17.8%</b>	<b>31.3%</b>
<b>Survival Rate of EMS Patients with Pulse at End of Transport Admitted to Hospital.</b>	<b>25.0%</b>	<b>45.5%</b>	<b>31.3%</b>	<b>37.5%</b>	<b>34.9%</b>
<b>Survival Rate of EMS Patients with Pulse at End of Transport Admitted to Hospital (CPC-1 or CPC-2).</b>	<b>25.0%</b>	<b>45.5%</b>	<b>31.3%</b>	<b>37.5%</b>	<b>34.9%</b>

**District of Columbia Fire and Emergency Medical Services Department**

**Cardiac Arrest Bystander CPR and AED Use, Outcomes and Return of Spontaneous Circulation (ROSC) - FY 2015 (Q1 to Q4)**

<b>Panel 4-A: Cardiac Arrests (Cardiac Etiology/"Shockable" Rhythm) Witnessed by Bystanders (ROSC)</b>	<b>Q1-FY-15</b>	<b>Q2-FY-15</b>	<b>Q3-FY-15</b>	<b>Q4-FY-15</b>	<b>FY-15 (TOTAL)</b>
Total Cardiac Arrests	144	167	149	163	<b>623</b>
Witnessed Cardiac Arrests	62	88	75	74	<b>299</b>
NOT Witnessed by EMS	39	49	44	50	<b>182</b>
Presumed Cardiac Etiology	35	44	42	45	<b>166</b>
<b>"Shockable" Rhythm (VFib/VTach/Unk)</b>	<b>5</b>	<b>14</b>	<b>15</b>	<b>11</b>	<b>45</b>
Pronounced Dead Before Transport	0	0	0	0	<b>0</b>
<b>Transported to ED</b>	<b>5</b>	<b>14</b>	<b>15</b>	<b>11</b>	<b>45</b>
Pulseless at End of Transport	3	6	6	7	<b>22</b>
<b>Pulse at End of Transport</b>	<b>2</b>	<b>8</b>	<b>9</b>	<b>4</b>	<b>23</b>
Pronounced Dead in ED	0	0	0	0	<b>0</b>
Ongoing Resuscitation in ED	2	8	9	4	<b>23</b>
<b>Admitted to Hospital</b>	<b>2</b>	<b>6</b>	<b>8</b>	<b>4</b>	<b>20</b>
Died in Hospital	0	1	2	1	<b>4</b>
Discharged alive	2	5	5	3	<b>15</b>
Discharged alive (CPC-1 or CPC-2)	2	5	5	3	<b>15</b>
Discharged alive (CPC-3, CPC-4 or Unk)	0	0	0	0	<b>0</b>
Died in Hospital after DNR	0	0	1	0	<b>1</b>
Discharged alive after DNR	0	0	0	0	<b>0</b>
Discharged alive after DNR (CPC-1 or CPC-2)	0	0	0	0	<b>0</b>
Discharged alive after DNR (CPC-3, CPC-4 or Unk)	0	0	0	0	<b>0</b>
<b>Total Discharged Alive</b>	<b>2</b>	<b>5</b>	<b>5</b>	<b>3</b>	<b>15</b>
<b>Total Discharged Alive (CPC-1 or CPC-2)</b>	<b>2</b>	<b>5</b>	<b>5</b>	<b>3</b>	<b>15</b>
<b>Total Discharged Alive (CPC-3, CPC-4 or Unk)</b>	<b>0</b>	<b>0</b>	<b>0</b>	<b>0</b>	<b>0</b>
<b>Pulse at End of Transport (Pre-Hospital ROSC rate).</b>	<b>40.0%</b>	<b>57.1%</b>	<b>60.0%</b>	<b>36.4%</b>	<b>51.1%</b>
<b>Survival Rate of EMS Patients with Pulse at End of Transport Admitted to Hospital.</b>	<b>100.0%</b>	<b>83.3%</b>	<b>62.5%</b>	<b>75.0%</b>	<b>75.0%</b>
<b>Survival Rate of EMS Patients with Pulse at End of Transport Admitted to Hospital (CPC-1 or CPC-2).</b>	<b>100.0%</b>	<b>83.3%</b>	<b>62.5%</b>	<b>75.0%</b>	<b>75.0%</b>

**District of Columbia Fire and Emergency Medical Services Department**

**Cardiac Arrest Bystander CPR and AED Use, Outcomes and Return of Spontaneous Circulation (ROSC) by Quarter and Month - FY 2015 (10/1/2014 to 9/30/2015)**

<b>Cardiac Arrests Witnessed by Bystanders (CPR) KPI</b>	<b>OCT-14</b>	<b>NOV-14</b>	<b>DEC-14</b>	<b>JAN-15</b>	<b>FEB-15</b>	<b>MAR-15</b>	<b>APR-15</b>	<b>MAY-15</b>	<b>JUN-15</b>	<b>JUL-15</b>	<b>AUG-15</b>	<b>SEP-15</b>	<b>FY-15 (FINAL)</b>
Total Cardiac Arrests	50	50	44	61	51	55	47	45	57	59	57	47	623
Witnessed Cardiac Arrests	21	18	23	36	24	28	19	21	35	32	24	18	299
<b>NOT Witnessed by EMS</b>	<b>17</b>	<b>8</b>	<b>14</b>	<b>21</b>	<b>12</b>	<b>16</b>	<b>12</b>	<b>13</b>	<b>19</b>	<b>19</b>	<b>17</b>	<b>14</b>	<b>182</b>
<b>Who Initiated CPR?</b>													
Not Applicable	0	0	0	0	0	0	0	0	0	0	0	0	0
<b>Lay Person</b>	<b>2</b>	<b>1</b>	<b>1</b>	<b>1</b>	<b>1</b>	<b>3</b>	<b>2</b>	<b>2</b>	<b>3</b>	<b>3</b>	<b>3</b>	<b>5</b>	<b>27</b>
<b>Lay Person Family Member</b>	<b>3</b>	<b>0</b>	<b>3</b>	<b>3</b>	<b>0</b>	<b>1</b>	<b>0</b>	<b>0</b>	<b>0</b>	<b>1</b>	<b>2</b>	<b>0</b>	<b>13</b>
<b>Lay Person Medical Provider</b>	<b>5</b>	<b>0</b>	<b>2</b>	<b>5</b>	<b>1</b>	<b>5</b>	<b>2</b>	<b>0</b>	<b>2</b>	<b>4</b>	<b>1</b>	<b>2</b>	<b>29</b>
First Responder (non-transport provider)	0	2	0	1	6	4	2	6	4	6	2	1	34
Responding EMS Personnel	7	5	8	11	4	3	6	5	10	5	9	6	79
<b>CPR Initiated by Bystanders</b>	<b>10</b>	<b>1</b>	<b>6</b>	<b>9</b>	<b>2</b>	<b>9</b>	<b>4</b>	<b>2</b>	<b>5</b>	<b>8</b>	<b>6</b>	<b>7</b>	<b>69</b>
<b>CPR Initiated by Bystanders, Limited to Arrest before Arrival of EMS Personnel.</b>	<b>58.8%</b>	<b>12.5%</b>	<b>42.9%</b>	<b>42.9%</b>	<b>16.7%</b>	<b>56.3%</b>	<b>33.3%</b>	<b>15.4%</b>	<b>26.3%</b>	<b>42.1%</b>	<b>35.3%</b>	<b>50.0%</b>	<b>37.9%</b>

<b>Cardiac Arrests Witnessed by Bystanders (AED Use) KPI</b>	<b>OCT-14</b>	<b>NOV-14</b>	<b>DEC-14</b>	<b>JAN-15</b>	<b>FEB-15</b>	<b>MAR-15</b>	<b>APR-15</b>	<b>MAY-15</b>	<b>JUN-15</b>	<b>JUL-15</b>	<b>AUG-15</b>	<b>SEP-15</b>	<b>FY-15 (FINAL)</b>
Total Cardiac Arrests	50	50	44	61	51	55	47	45	57	59	57	47	623
Witnessed Cardiac Arrests	21	18	23	36	24	28	19	21	35	32	24	18	299
<b>NOT Witnessed by EMS</b>	<b>17</b>	<b>8</b>	<b>14</b>	<b>21</b>	<b>12</b>	<b>16</b>	<b>12</b>	<b>13</b>	<b>19</b>	<b>19</b>	<b>17</b>	<b>14</b>	<b>182</b>
AED applied prior to EMS arrival	1	1	0	2	5	9	3	7	4	9	5	5	51
<b>Who Applied AED?</b>													<b>0</b>
<b>Lay Person</b>	<b>0</b>	<b>0</b>	<b>0</b>	<b>0</b>	<b>0</b>	<b>0</b>	<b>0</b>	<b>0</b>	<b>0</b>	<b>0</b>	<b>0</b>	<b>1</b>	<b>1</b>
<b>Lay Person Family Member</b>	<b>0</b>	<b>0</b>	<b>0</b>	<b>0</b>	<b>0</b>	<b>0</b>	<b>0</b>	<b>0</b>	<b>0</b>	<b>0</b>	<b>0</b>	<b>0</b>	<b>0</b>
<b>Lay Person Medical Provider</b>	<b>0</b>	<b>0</b>	<b>0</b>	<b>1</b>	<b>1</b>	<b>2</b>	<b>1</b>	<b>0</b>	<b>0</b>	<b>2</b>	<b>1</b>	<b>1</b>	<b>9</b>
First Responder (non-transport provider)	1	1	0	1	4	7	2	7	4	7	4	3	41
Police Applied AED	0	1	0	1	1	2	0	1	3	0	0	0	9
Unknown													0
<b>AED Used by Bystanders</b>	<b>0</b>	<b>0</b>	<b>0</b>	<b>1</b>	<b>1</b>	<b>2</b>	<b>1</b>	<b>0</b>	<b>0</b>	<b>2</b>	<b>1</b>	<b>2</b>	<b>10</b>
<b>AED Used by Bystanders, Limited to Arrest before Arrival of EMS Personnel.</b>	<b>0.0%</b>	<b>0.0%</b>	<b>0.0%</b>	<b>4.8%</b>	<b>8.3%</b>	<b>12.5%</b>	<b>8.3%</b>	<b>0.0%</b>	<b>0.0%</b>	<b>10.5%</b>	<b>5.9%</b>	<b>14.3%</b>	<b>5.5%</b>

**District of Columbia Fire and Emergency Medical Services Department**

**Cardiac Arrest Bystander CPR and AED Use, Outcomes and Return of Spontaneous Circulation (ROSC) by Quarter and Month - FY 2015 (10/1/2014 to 9/30/2015)**

<b>Panel 1: All Cardiac Arrests (Outcome)</b>	<b>OCT-14</b>	<b>NOV-14</b>	<b>DEC-14</b>	<b>JAN-15</b>	<b>FEB-15</b>	<b>MAR-15</b>	<b>APR-15</b>	<b>MAY-15</b>	<b>JUN-15</b>	<b>JUL-15</b>	<b>AUG-15</b>	<b>SEP-15</b>	<b>FY-15 (FINAL)</b>
<b>Total Cardiac Arrests</b>	<b>50</b>	<b>50</b>	<b>44</b>	<b>61</b>	<b>51</b>	<b>55</b>	<b>47</b>	<b>45</b>	<b>57</b>	<b>59</b>	<b>57</b>	<b>47</b>	<b>623</b>
<b>Transported to ED</b>	<b>50</b>	<b>50</b>	<b>44</b>	<b>61</b>	<b>50</b>	<b>55</b>	<b>46</b>	<b>36</b>	<b>51</b>	<b>53</b>	<b>52</b>	<b>38</b>	<b>586</b>
Pronounced Dead in ED	25	20	14	31	17	23	12	17	14	17	16	11	217
Ongoing Resuscitation in ED	25	30	30	30	33	32	34	19	37	36	36	27	369
<b>Admitted to Hospital</b>	<b>10</b>	<b>11</b>	<b>8</b>	<b>12</b>	<b>16</b>	<b>13</b>	<b>17</b>	<b>7</b>	<b>16</b>	<b>13</b>	<b>21</b>	<b>8</b>	<b>152</b>
Died in Hospital	6	4	5	7	5	8	6	4	5	5	15	4	74
Discharged alive	1	3	1	2	6	1	3	2	7	4	4	4	38
Discharged alive (CPC-1 or CPC-2)	1	3	1	2	5	1	3	1	7	4	3	4	35
Discharged alive (CPC-3, CPC-4 or Unk)	0	0	0	0	1	0	0	1	0	0	1	0	3
Died in Hospital after DNR	3	4	2	3	5	4	8	1	4	4	2	0	40
Discharged alive after DNR	0	0	0	0	0	0	0	0	0	0	0	0	0
Discharged alive after DNR (CPC-1 or CPC-2)	0	0	0	0	0	0	0	0	0	0	0	0	0
Discharged alive after DNR (CPC-3, CPC-4 or Unk)	0	0	0	0	0	0	0	0	0	0	0	0	0
<b>Total Discharged Alive</b>	<b>1</b>	<b>3</b>	<b>1</b>	<b>2</b>	<b>6</b>	<b>1</b>	<b>3</b>	<b>2</b>	<b>7</b>	<b>4</b>	<b>4</b>	<b>4</b>	<b>38</b>
<b>Total Discharged Alive (CPC-1 or CPC-2)</b>	<b>1</b>	<b>3</b>	<b>1</b>	<b>2</b>	<b>5</b>	<b>1</b>	<b>3</b>	<b>1</b>	<b>7</b>	<b>4</b>	<b>3</b>	<b>4</b>	<b>35</b>
<b>Total Discharged Alive (CPC-3, CPC-4 or Unk)</b>	<b>0</b>	<b>0</b>	<b>0</b>	<b>0</b>	<b>1</b>	<b>0</b>	<b>0</b>	<b>1</b>	<b>0</b>	<b>0</b>	<b>1</b>	<b>0</b>	<b>3</b>
<b>Overall Survival Rate.</b>	<b>2.0%</b>	<b>6.0%</b>	<b>2.3%</b>	<b>3.3%</b>	<b>11.8%</b>	<b>1.8%</b>	<b>6.4%</b>	<b>4.4%</b>	<b>12.3%</b>	<b>6.8%</b>	<b>7.0%</b>	<b>8.5%</b>	<b>6.1%</b>
<b>Overall Survival Rate (CPC-1 or CPC-2).</b>	<b>2.0%</b>	<b>6.0%</b>	<b>2.3%</b>	<b>3.3%</b>	<b>9.8%</b>	<b>1.8%</b>	<b>6.4%</b>	<b>2.2%</b>	<b>12.3%</b>	<b>6.8%</b>	<b>5.3%</b>	<b>8.5%</b>	<b>5.6%</b>

**District of Columbia Fire and Emergency Medical Services Department**

**Cardiac Arrest Bystander CPR and AED Use, Outcomes and Return of Spontaneous Circulation (ROSC) by Quarter and Month - FY 2015 (10/1/2014 to 9/30/2015)**

<b>Panel 2: Cardiac Arrests Witnessed by Bystanders (Outcome) KPI</b>	<b>OCT-14</b>	<b>NOV-14</b>	<b>DEC-14</b>	<b>JAN-15</b>	<b>FEB-15</b>	<b>MAR-15</b>	<b>APR-15</b>	<b>MAY-15</b>	<b>JUN-15</b>	<b>JUL-15</b>	<b>AUG-15</b>	<b>SEP-15</b>	<b>FY-15 (FINAL)</b>
Total Cardiac Arrests	50	50	44	61	51	55	47	45	57	59	57	47	623
Witnessed Cardiac Arrests	21	18	23	36	24	28	19	21	35	32	24	18	299
<b>NOT Witnessed by EMS</b>	<b>17</b>	<b>8</b>	<b>14</b>	<b>21</b>	<b>12</b>	<b>16</b>	<b>12</b>	<b>13</b>	<b>19</b>	<b>19</b>	<b>17</b>	<b>14</b>	<b>182</b>
<b>Transported to ED</b>	<b>17</b>	<b>8</b>	<b>14</b>	<b>21</b>	<b>12</b>	<b>16</b>	<b>12</b>	<b>13</b>	<b>19</b>	<b>19</b>	<b>17</b>	<b>13</b>	<b>181</b>
Pronounced Dead in ED	6	1	5	10	3	2	0	2	4	8	3	4	48
Ongoing Resuscitation in ED	11	7	9	11	9	14	12	11	15	11	14	9	133
<b>Admitted to Hospital</b>	<b>7</b>	<b>2</b>	<b>1</b>	<b>7</b>	<b>5</b>	<b>6</b>	<b>9</b>	<b>5</b>	<b>6</b>	<b>5</b>	<b>9</b>	<b>3</b>	<b>65</b>
Died in Hospital	5	1	1	4	1	2	3	3	3	2	6	2	33
Discharged alive	1	1	0	2	2	1	1	1	3	1	3	1	17
Discharged alive (CPC-1 or CPC-2)	1	1	0	2	2	1	1	1	3	1	3	1	17
Discharged alive (CPC-3, CPC-4 or Unk)	0	0	0	0	0	0	0	0	0	0	0	0	0
Died in Hospital after DNR	1	0	0	1	2	3	5	1	0	2	0	0	15
Discharged alive after DNR	0	0	0	0	0	0	0	0	0	0	0	0	0
Discharged alive after DNR (CPC-1 or CPC-2)	0	0	0	0	0	0	0	0	0	0	0	0	0
Discharged alive after DNR (CPC-3, CPC-4 or Unk)	0	0	0	0	0	0	0	0	0	0	0	0	0
<b>Total Discharged Alive</b>	<b>1</b>	<b>1</b>	<b>0</b>	<b>2</b>	<b>2</b>	<b>1</b>	<b>1</b>	<b>1</b>	<b>3</b>	<b>1</b>	<b>3</b>	<b>1</b>	<b>17</b>
<b>Total Discharged Alive (CPC-1 or CPC-2)</b>	<b>1</b>	<b>1</b>	<b>0</b>	<b>2</b>	<b>2</b>	<b>1</b>	<b>1</b>	<b>1</b>	<b>3</b>	<b>1</b>	<b>3</b>	<b>1</b>	<b>17</b>
<b>Total Discharged Alive (CPC-3, CPC-4 or Unk)</b>	<b>0</b>	<b>0</b>	<b>0</b>	<b>0</b>	<b>0</b>	<b>0</b>	<b>0</b>	<b>0</b>	<b>0</b>	<b>0</b>	<b>0</b>	<b>0</b>	<b>0</b>
<b>Overall Survival Rate.</b>	<b>5.9%</b>	<b>12.5%</b>	<b>0.0%</b>	<b>9.5%</b>	<b>16.7%</b>	<b>6.3%</b>	<b>8.3%</b>	<b>7.7%</b>	<b>15.8%</b>	<b>5.3%</b>	<b>17.6%</b>	<b>7.1%</b>	<b>9.3%</b>
<b>Overall Survival Rate (CPC-1 or CPC-2).</b>	<b>5.9%</b>	<b>12.5%</b>	<b>0.0%</b>	<b>9.5%</b>	<b>16.7%</b>	<b>6.3%</b>	<b>8.3%</b>	<b>7.7%</b>	<b>15.8%</b>	<b>5.3%</b>	<b>17.6%</b>	<b>7.1%</b>	<b>9.3%</b>

**District of Columbia Fire and Emergency Medical Services Department**

**Cardiac Arrest Bystander CPR and AED Use, Outcomes and Return of Spontaneous Circulation (ROSC) by Quarter and Month - FY 2015 (10/1/2014 to 9/30/2015)**

<b>Panel 3: Cardiac Arrests (of Cardiac Etiology) Witnessed by Bystanders (Outcome)</b>	<b>OCT-14</b>	<b>NOV-14</b>	<b>DEC-14</b>	<b>JAN-15</b>	<b>FEB-15</b>	<b>MAR-15</b>	<b>APR-15</b>	<b>MAY-15</b>	<b>JUN-15</b>	<b>JUL-15</b>	<b>AUG-15</b>	<b>SEP-15</b>	<b>FY-15 (FINAL)</b>
Total Cardiac Arrests	50	50	44	61	51	55	47	45	57	59	57	47	<b>623</b>
Witnessed Cardiac Arrests	21	18	23	36	24	28	19	21	35	32	24	18	<b>299</b>
NOT Witnessed by EMS	17	8	14	21	12	16	12	13	19	19	17	14	<b>182</b>
<b>Presumed Cardiac Etiology</b>	<b>15</b>	<b>8</b>	<b>12</b>	<b>18</b>	<b>12</b>	<b>14</b>	<b>12</b>	<b>13</b>	<b>17</b>	<b>18</b>	<b>15</b>	<b>12</b>	<b>166</b>
<b>Transported to ED</b>	<b>15</b>	<b>8</b>	<b>12</b>	<b>18</b>	<b>12</b>	<b>14</b>	<b>12</b>	<b>13</b>	<b>17</b>	<b>18</b>	<b>15</b>	<b>11</b>	<b>165</b>
Pronounced Dead in ED	5	1	5	8	3	2	0	2	4	8	3	4	<b>45</b>
Ongoing Resuscitation in ED	10	7	7	10	9	12	12	11	13	10	12	7	<b>120</b>
<b>Admitted to Hospital</b>	<b>6</b>	<b>2</b>	<b>1</b>	<b>6</b>	<b>5</b>	<b>5</b>	<b>9</b>	<b>5</b>	<b>6</b>	<b>5</b>	<b>7</b>	<b>2</b>	<b>59</b>
Died in Hospital	4	1	1	3	1	1	3	3	3	2	4	1	<b>27</b>
Discharged alive	1	1	0	2	2	1	1	1	3	1	3	1	<b>17</b>
Discharged alive (CPC-1 or CPC-2)	1	1	0	2	2	1	1	1	3	1	3	1	<b>17</b>
Discharged alive (CPC-3, CPC-4 or Unk)	0	0	0	0	0	0	0	0	0	0	0	0	<b>0</b>
Died in Hospital after DNR	1	0	0	1	2	3	5	1	0	2	0	0	<b>15</b>
Discharged alive after DNR	0	0	0	0	0	0	0	0	0	0	0	0	<b>0</b>
Discharged alive after DNR (CPC-1 or CPC-2)	0	0	0	0	0	0	0	0	0	0	0	0	<b>0</b>
Discharged alive after DNR (CPC-3, CPC-4 or Unk)	0	0	0	0	0	0	0	0	0	0	0	0	<b>0</b>
<b>Total Discharged Alive</b>	<b>1</b>	<b>1</b>	<b>0</b>	<b>2</b>	<b>2</b>	<b>1</b>	<b>1</b>	<b>1</b>	<b>3</b>	<b>1</b>	<b>3</b>	<b>1</b>	<b>17</b>
<b>Total Discharged Alive (CPC-1 or CPC-2)</b>	<b>1</b>	<b>1</b>	<b>0</b>	<b>2</b>	<b>2</b>	<b>1</b>	<b>1</b>	<b>1</b>	<b>3</b>	<b>1</b>	<b>3</b>	<b>1</b>	<b>17</b>
<b>Total Discharged Alive (CPC-3, CPC-4 or Unk)</b>	<b>0</b>	<b>0</b>	<b>0</b>	<b>0</b>	<b>0</b>	<b>0</b>	<b>0</b>	<b>0</b>	<b>0</b>	<b>0</b>	<b>0</b>	<b>0</b>	<b>0</b>
<b>Overall Survival Rate.</b>	<b>6.7%</b>	<b>12.5%</b>	<b>0.0%</b>	<b>11.1%</b>	<b>16.7%</b>	<b>7.1%</b>	<b>8.3%</b>	<b>7.7%</b>	<b>17.6%</b>	<b>5.6%</b>	<b>20.0%</b>	<b>8.3%</b>	<b>10.2%</b>
<b>Overall Survival Rate (CPC-1 or CPC-2).</b>	<b>6.7%</b>	<b>12.5%</b>	<b>0.0%</b>	<b>11.1%</b>	<b>16.7%</b>	<b>7.1%</b>	<b>8.3%</b>	<b>7.7%</b>	<b>17.6%</b>	<b>5.6%</b>	<b>20.0%</b>	<b>8.3%</b>	<b>10.2%</b>



**District of Columbia Fire and Emergency Medical Services Department**

**Cardiac Arrest Bystander CPR and AED Use, Outcomes and Return of Spontaneous Circulation (ROSC) by Quarter and Month - FY 2015 (10/1/2014 to 9/30/2015)**

<b>Panel 4: Cardiac Arrests (Cardiac Etiology/"Shockable" Rhythm) Witnessed by Bystanders (Outcome) KPI</b>	<b>OCT-14</b>	<b>NOV-14</b>	<b>DEC-14</b>	<b>JAN-15</b>	<b>FEB-15</b>	<b>MAR-15</b>	<b>APR-15</b>	<b>MAY-15</b>	<b>JUN-15</b>	<b>JUL-15</b>	<b>AUG-15</b>	<b>SEP-15</b>	<b>FY-15 (FINAL)</b>
Total Cardiac Arrests	50	50	44	61	51	55	47	45	57	59	57	47	<b>623</b>
Witnessed Cardiac Arrests	21	18	23	36	24	28	19	21	35	32	24	18	<b>299</b>
NOT Witnessed by EMS	17	8	14	21	12	16	12	13	19	19	17	14	<b>182</b>
Presumed Cardiac Etiology	15	8	12	18	12	14	12	13	17	18	15	12	<b>166</b>
<b>"Shockable" Rhythm (VFib/VTach/Unk)</b>	<b>3</b>	<b>2</b>	<b>0</b>	<b>4</b>	<b>4</b>	<b>6</b>	<b>4</b>	<b>5</b>	<b>6</b>	<b>4</b>	<b>4</b>	<b>3</b>	<b>45</b>
<b>Transported to ED</b>	<b>3</b>	<b>2</b>	<b>0</b>	<b>4</b>	<b>4</b>	<b>6</b>	<b>4</b>	<b>5</b>	<b>6</b>	<b>4</b>	<b>4</b>	<b>3</b>	<b>45</b>
Pronounced Dead in ED	2	0	0	1	0	1	0	1	1	2	1	2	<b>11</b>
Ongoing Resuscitation in ED	1	2	0	3	4	5	4	4	5	2	3	1	<b>34</b>
<b>Admitted to Hospital</b>	<b>1</b>	<b>1</b>	<b>0</b>	<b>3</b>	<b>3</b>	<b>1</b>	<b>3</b>	<b>2</b>	<b>4</b>	<b>2</b>	<b>2</b>	<b>1</b>	<b>23</b>
Died in Hospital	0	0	0	1	1	0	1	1	1	1	0	0	<b>6</b>
Discharged alive	1	1	0	2	2	1	1	1	3	1	2	1	<b>16</b>
Discharged alive (CPC-1 or CPC-2)	1	1	0	2	2	1	1	1	3	1	2	1	<b>16</b>
Discharged alive (CPC-3, CPC-4 or Unk)	0	0	0	0	0	0	0	0	0	0	0	0	<b>0</b>
Died in Hospital after DNR	0	0	0	0	0	0	1	0	0	0	0	0	<b>1</b>
Discharged alive after DNR	0	0	0	0	0	0	0	0	0	0	0	0	<b>0</b>
Discharged alive after DNR (CPC-1 or CPC-2)	0	0	0	0	0	0	0	0	0	0	0	0	<b>0</b>
Discharged alive after DNR (CPC-3, CPC-4 or Unk)	0	0	0	0	0	0	0	0	0	0	0	0	<b>0</b>
<b>Total Discharged Alive</b>	<b>1</b>	<b>1</b>	<b>0</b>	<b>2</b>	<b>2</b>	<b>1</b>	<b>1</b>	<b>1</b>	<b>3</b>	<b>1</b>	<b>2</b>	<b>1</b>	<b>16</b>
<b>Total Discharged Alive (CPC-1 or CPC-2)</b>	<b>1</b>	<b>1</b>	<b>0</b>	<b>2</b>	<b>2</b>	<b>1</b>	<b>1</b>	<b>1</b>	<b>3</b>	<b>1</b>	<b>2</b>	<b>1</b>	<b>16</b>
<b>Total Discharged Alive (CPC-3, CPC-4 or Unk)</b>	<b>0</b>	<b>0</b>	<b>0</b>	<b>0</b>	<b>0</b>	<b>0</b>	<b>0</b>	<b>0</b>	<b>0</b>	<b>0</b>	<b>0</b>	<b>0</b>	<b>0</b>
<b>Overall Survival Rate.</b>	<b>33.3%</b>	<b>50.0%</b>	<b>#DIV/0!</b>	<b>50.0%</b>	<b>50.0%</b>	<b>16.7%</b>	<b>25.0%</b>	<b>20.0%</b>	<b>50.0%</b>	<b>25.0%</b>	<b>50.0%</b>	<b>33.3%</b>	<b>35.6%</b>
<b>Overall Survival Rate (CPC-1 or CPC-2).</b>	<b>33.3%</b>	<b>50.0%</b>	<b>#DIV/0!</b>	<b>50.0%</b>	<b>50.0%</b>	<b>16.7%</b>	<b>25.0%</b>	<b>20.0%</b>	<b>50.0%</b>	<b>25.0%</b>	<b>50.0%</b>	<b>33.3%</b>	<b>35.6%</b>

**District of Columbia Fire and Emergency Medical Services Department**

**Cardiac Arrest Bystander CPR and AED Use, Outcomes and Return of Spontaneous Circulation (ROSC) by Quarter and Month - FY 2015 (10/1/2014 to 9/30/2015)**

<b>Panel 1-A: All Cardiac Arrests (ROSC)</b>	<b>OCT-14</b>	<b>NOV-14</b>	<b>DEC-14</b>	<b>JAN-15</b>	<b>FEB-15</b>	<b>MAR-15</b>	<b>APR-15</b>	<b>MAY-15</b>	<b>JUN-15</b>	<b>JUL-15</b>	<b>AUG-15</b>	<b>SEP-15</b>	<b>FY-15 (FINAL)</b>
<b>Total Cardiac Arrests</b>	<b>50</b>	<b>50</b>	<b>44</b>	<b>61</b>	<b>51</b>	<b>55</b>	<b>47</b>	<b>45</b>	<b>57</b>	<b>59</b>	<b>57</b>	<b>47</b>	<b>623</b>
Pronounced Dead Before Transport	0	0	0	0	1	0	1	9	6	6	5	9	37
<b>Transported to ED</b>	<b>50</b>	<b>50</b>	<b>44</b>	<b>61</b>	<b>50</b>	<b>55</b>	<b>46</b>	<b>36</b>	<b>51</b>	<b>53</b>	<b>52</b>	<b>38</b>	<b>586</b>
Pulseless at End of Transport	39	42	33	47	33	41	32	27	33	42	38	32	439
<b>Pulse at End of Transport</b>	<b>11</b>	<b>8</b>	<b>11</b>	<b>14</b>	<b>17</b>	<b>14</b>	<b>14</b>	<b>9</b>	<b>18</b>	<b>11</b>	<b>14</b>	<b>6</b>	<b>147</b>
Pronounced Dead in ED	0	0	0	0	1	0	0	0	0	0	0	1	2
Ongoing Resuscitation in ED	11	8	11	14	16	14	14	9	18	11	14	5	145
<b>Admitted to Hospital</b>	<b>9</b>	<b>7</b>	<b>7</b>	<b>8</b>	<b>12</b>	<b>10</b>	<b>11</b>	<b>6</b>	<b>13</b>	<b>9</b>	<b>11</b>	<b>3</b>	<b>106</b>
Died in Hospital	5	2	4	4	4	6	4	3	4	3	7	1	47
Discharged alive	1	1	1	2	4	1	2	2	6	4	3	2	29
Discharged alive (CPC-1 or CPC-2)	1	1	1	2	4	1	2	1	6	4	2	2	27
Discharged alive (CPC-3, CPC-4 or Unk)	0	0	0	0	0	0	0	1	0	0	1	0	2
Died in Hospital after DNR	3	4	2	2	4	3	5	1	3	2	1	0	30
Discharged alive after DNR	0	0	0	0	0	0	0	0	0	0	0	0	0
Discharged alive after DNR (CPC-1 or CPC-2)	0	0	0	0	0	0	0	0	0	0	0	0	0
Discharged alive after DNR (CPC-3, CPC-4 or Unk)	0	0	0	0	0	0	0	0	0	0	0	0	0
<b>Total Discharged Alive</b>	<b>1</b>	<b>1</b>	<b>1</b>	<b>2</b>	<b>4</b>	<b>1</b>	<b>2</b>	<b>2</b>	<b>6</b>	<b>4</b>	<b>3</b>	<b>2</b>	<b>29</b>
<b>Total Discharged Alive (CPC-1 or CPC-2)</b>	<b>1</b>	<b>1</b>	<b>1</b>	<b>2</b>	<b>4</b>	<b>1</b>	<b>2</b>	<b>1</b>	<b>6</b>	<b>4</b>	<b>2</b>	<b>2</b>	<b>27</b>
<b>Total Discharged Alive (CPC-3, CPC-4 or Unk)</b>	<b>0</b>	<b>0</b>	<b>0</b>	<b>0</b>	<b>0</b>	<b>0</b>	<b>0</b>	<b>1</b>	<b>0</b>	<b>0</b>	<b>1</b>	<b>0</b>	<b>2</b>
<b>Pulse at End of Transport (Pre-Hospital ROSC rate).</b>	<b>22.0%</b>	<b>16.0%</b>	<b>25.0%</b>	<b>23.0%</b>	<b>33.3%</b>	<b>25.5%</b>	<b>29.8%</b>	<b>20.0%</b>	<b>31.6%</b>	<b>18.6%</b>	<b>24.6%</b>	<b>12.8%</b>	<b>23.6%</b>
<b>Survival Rate of EMS Patients with Pulse at End of Transport Admitted to Hospital.</b>	<b>11.1%</b>	<b>14.3%</b>	<b>14.3%</b>	<b>25.0%</b>	<b>33.3%</b>	<b>10.0%</b>	<b>18.2%</b>	<b>33.3%</b>	<b>46.2%</b>	<b>44.4%</b>	<b>27.3%</b>	<b>66.7%</b>	<b>27.4%</b>
<b>Survival Rate of EMS Patients with Pulse at End of Transport Admitted to Hospital (CPC-1 or CPC-2).</b>	<b>11.1%</b>	<b>14.3%</b>	<b>14.3%</b>	<b>25.0%</b>	<b>33.3%</b>	<b>10.0%</b>	<b>18.2%</b>	<b>16.7%</b>	<b>46.2%</b>	<b>44.4%</b>	<b>18.2%</b>	<b>66.7%</b>	<b>25.5%</b>

**District of Columbia Fire and Emergency Medical Services Department**

**Cardiac Arrest Bystander CPR and AED Use, Outcomes and Return of Spontaneous Circulation (ROSC) by Quarter and Month - FY 2015 (10/1/2014 to 9/30/2015)**

<b>Panel 2-A: Cardiac Arrests Witnessed by Bystanders (ROSC)</b>	<b>OCT-14</b>	<b>NOV-14</b>	<b>DEC-14</b>	<b>JAN-15</b>	<b>FEB-15</b>	<b>MAR-15</b>	<b>APR-15</b>	<b>MAY-15</b>	<b>JUN-15</b>	<b>JUL-15</b>	<b>AUG-15</b>	<b>SEP-15</b>	<b>FY-15 (FINAL)</b>
Total Cardiac Arrests	50	50	44	61	51	55	47	45	57	59	57	47	623
Witnessed Cardiac Arrests	21	18	23	36	24	28	19	21	35	32	24	18	299
<b>NOT Witnessed by EMS</b>	<b>17</b>	<b>8</b>	<b>14</b>	<b>21</b>	<b>12</b>	<b>16</b>	<b>12</b>	<b>13</b>	<b>19</b>	<b>19</b>	<b>17</b>	<b>14</b>	<b>182</b>
Pronounced Dead Before Transport	0	0	0	0	0	0	0	0	0	0	0	1	1
<b>Transported to ED</b>	<b>17</b>	<b>8</b>	<b>14</b>	<b>21</b>	<b>12</b>	<b>16</b>	<b>12</b>	<b>13</b>	<b>19</b>	<b>19</b>	<b>17</b>	<b>13</b>	<b>181</b>
Pulseless at End of Transport	11	6	11	17	7	10	6	5	12	16	12	12	125
<b>Pulse at End of Transport</b>	<b>6</b>	<b>2</b>	<b>3</b>	<b>4</b>	<b>5</b>	<b>6</b>	<b>6</b>	<b>8</b>	<b>7</b>	<b>3</b>	<b>5</b>	<b>1</b>	<b>56</b>
Pronounced Dead in ED	0	0	0	0	1	0	0	0	0	0	0	0	1
Ongoing Resuscitation in ED	6	2	3	4	4	6	6	8	7	3	5	1	55
<b>Admitted to Hospital</b>	<b>6</b>	<b>2</b>	<b>1</b>	<b>4</b>	<b>4</b>	<b>4</b>	<b>6</b>	<b>5</b>	<b>5</b>	<b>3</b>	<b>5</b>	<b>1</b>	<b>46</b>
Died in Hospital	4	1	1	2	1	1	3	3	2	1	3	1	23
Discharged alive	1	1	0	2	2	1	1	1	3	1	2	0	15
Discharged alive (CPC-1 or CPC-2)	1	1	0	2	2	1	1	1	3	1	2	0	15
Discharged alive (CPC-3, CPC-4 or Unk)	0	0	0	0	0	0	0	0	0	0	0	0	0
Died in Hospital after DNR	1	0	0	0	1	2	2	1	0	1	0	0	8
Discharged alive after DNR	0	0	0	0	0	0	0	0	0	0	0	0	0
Discharged alive after DNR (CPC-1 or CPC-2)	0	0	0	0	0	0	0	0	0	0	0	0	0
Discharged alive after DNR (CPC-3, CPC-4 or Unk)	0	0	0	0	0	0	0	0	0	0	0	0	0
<b>Total Discharged Alive</b>	<b>1</b>	<b>1</b>	<b>0</b>	<b>2</b>	<b>2</b>	<b>1</b>	<b>1</b>	<b>1</b>	<b>3</b>	<b>1</b>	<b>2</b>	<b>0</b>	<b>15</b>
<b>Total Discharged Alive (CPC-1 or CPC-2)</b>	<b>1</b>	<b>1</b>	<b>0</b>	<b>2</b>	<b>2</b>	<b>1</b>	<b>1</b>	<b>1</b>	<b>3</b>	<b>1</b>	<b>2</b>	<b>0</b>	<b>15</b>
<b>Total Discharged Alive (CPC-3, CPC-4 or Unk)</b>	<b>0</b>	<b>0</b>	<b>0</b>	<b>0</b>	<b>0</b>	<b>0</b>	<b>0</b>	<b>0</b>	<b>0</b>	<b>0</b>	<b>0</b>	<b>0</b>	<b>0</b>
<b>Pulse at End of Transport (Pre-Hospital ROSC rate).</b>	<b>35.3%</b>	<b>25.0%</b>	<b>21.4%</b>	<b>19.0%</b>	<b>41.7%</b>	<b>37.5%</b>	<b>50.0%</b>	<b>61.5%</b>	<b>36.8%</b>	<b>15.8%</b>	<b>29.4%</b>	<b>7.1%</b>	<b>30.8%</b>
<b>Survival Rate of EMS Patients with Pulse at End of Transport Admitted to Hospital.</b>	<b>16.7%</b>	<b>50.0%</b>	<b>0.0%</b>	<b>50.0%</b>	<b>50.0%</b>	<b>25.0%</b>	<b>16.7%</b>	<b>20.0%</b>	<b>60.0%</b>	<b>33.3%</b>	<b>40.0%</b>	<b>0.0%</b>	<b>32.6%</b>
<b>Survival Rate of EMS Patients with Pulse at End of Transport Admitted to Hospital (CPC-1 or CPC-2).</b>	<b>16.7%</b>	<b>50.0%</b>	<b>0.0%</b>	<b>50.0%</b>	<b>50.0%</b>	<b>25.0%</b>	<b>16.7%</b>	<b>20.0%</b>	<b>60.0%</b>	<b>33.3%</b>	<b>40.0%</b>	<b>0.0%</b>	<b>32.6%</b>

**District of Columbia Fire and Emergency Medical Services Department**

**Cardiac Arrest Bystander CPR and AED Use, Outcomes and Return of Spontaneous Circulation (ROSC) by Quarter and Month - FY 2015 (10/1/2014 to 9/30/2015)**

<b>Panel 3-A: Cardiac Arrests (of Cardiac Etiology) Witnessed by Bystanders (ROSC)</b>	<b>OCT-14</b>	<b>NOV-14</b>	<b>DEC-14</b>	<b>JAN-15</b>	<b>FEB-15</b>	<b>MAR-15</b>	<b>APR-15</b>	<b>MAY-15</b>	<b>JUN-15</b>	<b>JUL-15</b>	<b>AUG-15</b>	<b>SEP-15</b>	<b>FY-15 (FINAL)</b>
Total Cardiac Arrests	50	50	44	61	51	55	47	45	57	59	57	47	623
Witnessed Cardiac Arrests	21	18	23	36	24	28	19	21	35	32	24	18	299
NOT Witnessed by EMS	17	8	14	21	12	16	12	13	19	19	17	14	182
<b>Presumed Cardiac Etiology</b>	<b>15</b>	<b>8</b>	<b>12</b>	<b>18</b>	<b>12</b>	<b>14</b>	<b>12</b>	<b>13</b>	<b>17</b>	<b>18</b>	<b>15</b>	<b>12</b>	<b>166</b>
Pronounced Dead Before Transport	0	0	0	0	0	0	0	0	0	0	0	1	1
<b>Transported to ED</b>	<b>15</b>	<b>8</b>	<b>12</b>	<b>18</b>	<b>12</b>	<b>14</b>	<b>12</b>	<b>13</b>	<b>17</b>	<b>18</b>	<b>15</b>	<b>11</b>	<b>165</b>
Pulseless at End of Transport	10	6	9	15	7	8	6	5	11	15	10	11	113
<b>Pulse at End of Transport</b>	<b>5</b>	<b>2</b>	<b>3</b>	<b>3</b>	<b>5</b>	<b>6</b>	<b>6</b>	<b>8</b>	<b>6</b>	<b>3</b>	<b>5</b>	<b>0</b>	<b>52</b>
Pronounced Dead in ED	0	0	0	0	1	0	0	0	0	0	0	0	1
Ongoing Resuscitation in ED	5	2	3	3	4	6	6	8	6	3	5	0	51
<b>Admitted to Hospital</b>	<b>5</b>	<b>2</b>	<b>1</b>	<b>3</b>	<b>4</b>	<b>4</b>	<b>6</b>	<b>5</b>	<b>5</b>	<b>3</b>	<b>5</b>	<b>0</b>	<b>43</b>
Died in Hospital	3	1	1	1	1	1	3	3	2	1	3	0	20
Discharged alive	1	1	0	2	2	1	1	1	3	1	2	0	15
Discharged alive (CPC-1 or CPC-2)	1	1	0	2	2	1	1	1	3	1	2	0	15
Discharged alive (CPC-3, CPC-4 or Unk)	0	0	0	0	0	0	0	0	0	0	0	0	0
Died in Hospital after DNR	1	0	0	0	1	2	2	1	0	1	0	0	8
Discharged alive after DNR	0	0	0	0	0	0	0	0	0	0	0	0	0
Discharged alive after DNR (CPC-1 or CPC-2)	0	0	0	0	0	0	0	0	0	0	0	0	0
Discharged alive after DNR (CPC-3, CPC-4 or Unk)	0	0	0	0	0	0	0	0	0	0	0	0	0
<b>Total Discharged Alive</b>	<b>1</b>	<b>1</b>	<b>0</b>	<b>2</b>	<b>2</b>	<b>1</b>	<b>1</b>	<b>1</b>	<b>3</b>	<b>1</b>	<b>2</b>	<b>0</b>	<b>15</b>
<b>Total Discharged Alive (CPC-1 or CPC-2)</b>	<b>1</b>	<b>1</b>	<b>0</b>	<b>2</b>	<b>2</b>	<b>1</b>	<b>1</b>	<b>1</b>	<b>3</b>	<b>1</b>	<b>2</b>	<b>0</b>	<b>15</b>
<b>Total Discharged Alive (CPC-3, CPC-4 or Unk)</b>	<b>0</b>	<b>0</b>	<b>0</b>	<b>0</b>	<b>0</b>	<b>0</b>	<b>0</b>	<b>0</b>	<b>0</b>	<b>0</b>	<b>0</b>	<b>0</b>	<b>0</b>
<b>Pulse at End of Transport (Pre-Hospital ROSC rate).</b>	<b>33.3%</b>	<b>25.0%</b>	<b>25.0%</b>	<b>16.7%</b>	<b>41.7%</b>	<b>42.9%</b>	<b>50.0%</b>	<b>61.5%</b>	<b>35.3%</b>	<b>16.7%</b>	<b>33.3%</b>	<b>0.0%</b>	<b>31.3%</b>
<b>Survival Rate of EMS Patients with Pulse at End of Transport Admitted to Hospital.</b>	<b>20.0%</b>	<b>50.0%</b>	<b>0.0%</b>	<b>66.7%</b>	<b>50.0%</b>	<b>25.0%</b>	<b>16.7%</b>	<b>20.0%</b>	<b>60.0%</b>	<b>33.3%</b>	<b>40.0%</b>	<b>N/A</b>	<b>34.9%</b>
<b>Survival Rate of EMS Patients with Pulse at End of Transport Admitted to Hospital (CPC-1 or CPC-2).</b>	<b>20.0%</b>	<b>50.0%</b>	<b>0.0%</b>	<b>66.7%</b>	<b>50.0%</b>	<b>25.0%</b>	<b>16.7%</b>	<b>20.0%</b>	<b>60.0%</b>	<b>33.3%</b>	<b>40.0%</b>	<b>N/A</b>	<b>34.9%</b>

**District of Columbia Fire and Emergency Medical Services Department**

**Cardiac Arrest Bystander CPR and AED Use, Outcomes and Return of Spontaneous Circulation (ROSC) by Quarter and Month - FY 2015 (10/1/2014 to 9/30/2015)**

<b>Panel 4-A: Cardiac Arrests (Cardiac Etiology/"Shockable" Rhythm) Witnessed by Bystanders (ROSC)</b>	<b>OCT-14</b>	<b>NOV-14</b>	<b>DEC-14</b>	<b>JAN-15</b>	<b>FEB-15</b>	<b>MAR-15</b>	<b>APR-15</b>	<b>MAY-15</b>	<b>JUN-15</b>	<b>JUL-15</b>	<b>AUG-15</b>	<b>SEP-15</b>	<b>FY-15 (FINAL)</b>
Total Cardiac Arrests	50	50	44	61	51	55	47	45	57	59	57	47	<b>623</b>
Witnessed Cardiac Arrests	21	18	23	36	24	28	19	21	35	32	24	18	<b>299</b>
NOT Witnessed by EMS	17	8	14	21	12	16	12	13	19	19	17	14	<b>182</b>
Presumed Cardiac Etiology	15	8	12	18	12	14	12	13	17	18	15	12	<b>166</b>
<b>"Shockable" Rhythm (VFib/VTach/Unk)</b>	<b>3</b>	<b>2</b>	<b>0</b>	<b>4</b>	<b>4</b>	<b>6</b>	<b>4</b>	<b>5</b>	<b>6</b>	<b>4</b>	<b>4</b>	<b>3</b>	<b>45</b>
Pronounced Dead Before Transport	0	0	0	0	0	0	0	0	0	0	0	0	<b>0</b>
<b>Transported to ED</b>	<b>3</b>	<b>2</b>	<b>0</b>	<b>4</b>	<b>4</b>	<b>6</b>	<b>4</b>	<b>5</b>	<b>6</b>	<b>4</b>	<b>4</b>	<b>3</b>	<b>45</b>
Pulseless at End of Transport	2	1	0	2	1	3	1	2	3	2	2	3	<b>22</b>
<b>Pulse at End of Transport</b>	<b>1</b>	<b>1</b>	<b>0</b>	<b>2</b>	<b>3</b>	<b>3</b>	<b>3</b>	<b>3</b>	<b>3</b>	<b>2</b>	<b>2</b>	<b>0</b>	<b>23</b>
Pronounced Dead in ED	0	0	0	0	0	0	0	0	0	0	0	0	<b>0</b>
Ongoing Resuscitation in ED	1	1	0	2	3	3	3	3	3	2	2	0	<b>23</b>
<b>Admitted to Hospital</b>	<b>1</b>	<b>1</b>	<b>0</b>	<b>2</b>	<b>3</b>	<b>1</b>	<b>3</b>	<b>2</b>	<b>3</b>	<b>2</b>	<b>2</b>	<b>0</b>	<b>20</b>
Died in Hospital	0	0	0	0	1	0	1	1	0	1	0	0	<b>4</b>
Discharged alive	1	1	0	2	2	1	1	1	3	1	2	0	<b>15</b>
Discharged alive (CPC-1 or CPC-2)	1	1	0	2	2	1	1	1	3	1	2	0	<b>15</b>
Discharged alive (CPC-3, CPC-4 or Unk)	0	0	0	0	0	0	0	0	0	0	0	0	<b>0</b>
Died in Hospital after DNR	0	0	0	0	0	0	1	0	0	0	0	0	<b>1</b>
Discharged alive after DNR	0	0	0	0	0	0	0	0	0	0	0	0	<b>0</b>
Discharged alive after DNR (CPC-1 or CPC-2)	0	0	0	0	0	0	0	0	0	0	0	0	<b>0</b>
Discharged alive after DNR (CPC-3, CPC-4 or Unk)	0	0	0	0	0	0	0	0	0	0	0	0	<b>0</b>
<b>Total Discharged Alive</b>	<b>1</b>	<b>1</b>	<b>0</b>	<b>2</b>	<b>2</b>	<b>1</b>	<b>1</b>	<b>1</b>	<b>3</b>	<b>1</b>	<b>2</b>	<b>0</b>	<b>15</b>
<b>Total Discharged Alive (CPC-1 or CPC-2)</b>	<b>1</b>	<b>1</b>	<b>0</b>	<b>2</b>	<b>2</b>	<b>1</b>	<b>1</b>	<b>1</b>	<b>3</b>	<b>1</b>	<b>2</b>	<b>0</b>	<b>15</b>
<b>Total Discharged Alive (CPC-3, CPC-4 or Unk)</b>	<b>0</b>	<b>0</b>	<b>0</b>	<b>0</b>	<b>0</b>	<b>0</b>	<b>0</b>	<b>0</b>	<b>0</b>	<b>0</b>	<b>0</b>	<b>0</b>	<b>0</b>
<b>Pulse at End of Transport (Pre-Hospital ROSC rate).</b>	<b>33.3%</b>	<b>50.0%</b>	<b>N/A</b>	<b>50.0%</b>	<b>75.0%</b>	<b>50.0%</b>	<b>75.0%</b>	<b>60.0%</b>	<b>50.0%</b>	<b>50.0%</b>	<b>50.0%</b>	<b>0.0%</b>	<b>51.1%</b>
<b>Survival Rate of EMS Patients with Pulse at End of Transport Admitted to Hospital.</b>	<b>100.0%</b>	<b>100.0%</b>	<b>N/A</b>	<b>100.0%</b>	<b>66.7%</b>	<b>100.0%</b>	<b>33.3%</b>	<b>50.0%</b>	<b>100.0%</b>	<b>50.0%</b>	<b>100.0%</b>	<b>N/A</b>	<b>75.0%</b>
<b>Survival Rate of EMS Patients with Pulse at End of Transport Admitted to Hospital (CPC-1 or CPC-2).</b>	<b>100.0%</b>	<b>100.0%</b>	<b>N/A</b>	<b>100.0%</b>	<b>66.7%</b>	<b>100.0%</b>	<b>33.3%</b>	<b>50.0%</b>	<b>100.0%</b>	<b>50.0%</b>	<b>100.0%</b>	<b>N/A</b>	<b>75.0%</b>