

**DISTRICT OF COLUMBIA FIRE AND EMS DEPARTMENT**  
EMS Patient Case Information: SUSPECTED DRUG USE (OPIOIDS)



**OPIOID CASES: Year End Report - FY 2020**

PRODUCED ON: **03/19/2021**

<b>DOCUMENT TITLE</b>	<b>PAGE</b>
<b>TABLE - Suspected Opioid Cases: ALL CASES</b>	<b>2</b>
MAP - Suspected Opioid Cases: ALL CASES	3
MAP - Suspected Opioid Cases: ALL CASES with NARCAN USE	4
MAP - Suspected Opioid Cases: KNOWN DEATHS	5
<b>TABLE - Suspected Opioid Cases: TRANSPORTS</b>	<b>6</b>
MAP - Suspected Opioid Cases: TRANSPORTS	7
MAP - Suspected Opioid Cases: TRANSPORTS with NARCAN USE	8
<b>TABLE - Suspected Opioid Cases: NO LOADS</b>	<b>9</b>
MAP - Suspected Opioid Cases: NO LOADS	10
MAP - Suspected Opioid Cases: NO LOADS with NARCAN USE	11
CHART - Suspected Opioid Cases: ALL CASES	12
CHART - Suspected Opioid Cases: TRANSPORTS	12
CHART - Suspected Opioid Cases: NO LOADS	12
CHART - Suspected Opioid Cases: TRANSPORTS - % NARCAN USE	13
CHART - Suspected Opioid Cases: TRANSPORTS - % NARCAN USE	13
CHART - Suspected Opioid Cases: NO LOADS - % NARCAN USE	13
CHART - Suspected Opioid Cases: ALL CASES - DISTRIBUTION	14
CHART - Suspected Opioid Cases: TRANSPORTS - DISTRIBUTION	14
CHART - Suspected Opioid Cases: NO LOADS - DISTRIBUTION	14

**START DATE**

10/01/2019

**TOTAL DAYS**

**366**

**END DATE**

10/01/2020

## District of Columbia Fire and EMS Department

Suspected Opioid Cases: ALL CASES (10/01/2019 to 10/01/2020)

SUSPECTED OPIOID CASES (ALL)		
TYPE	NARCAN USE	COUNT
All Cases	Narcan Used	1,522
All Cases	Narcan <b>NOT</b> Used	2,155
<b>All Cases</b>	<b>Suspected Opioid Cases</b>	<b>3,677</b>

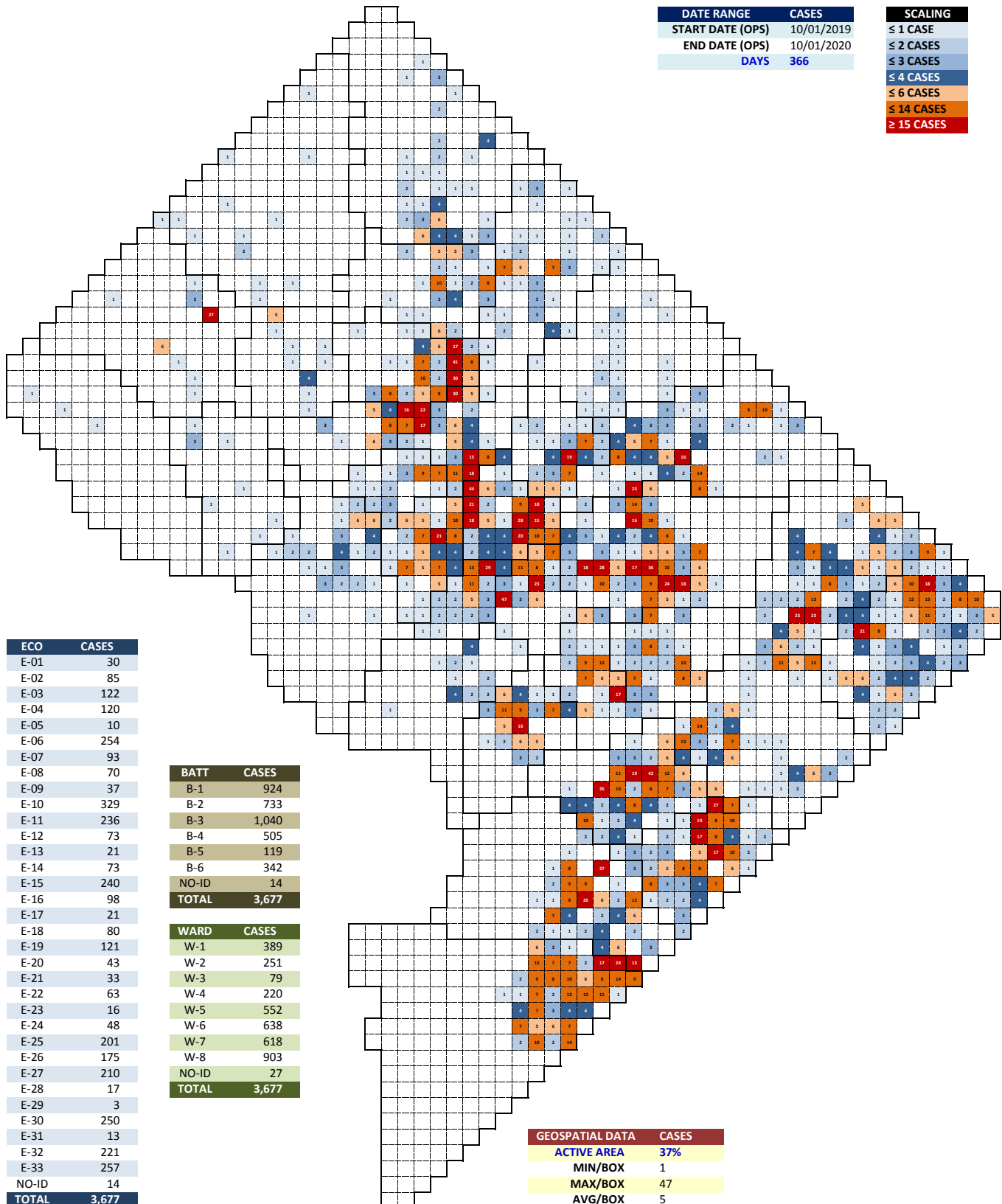
SUSPECTED OPIOID CASES (ALL)		
TYPE	DESCRIPTION	MEASURE
All Cases	Mean (Daily)	10
All Cases	Median (Daily)	10
All Cases	Mode (Daily)	11
All Cases	Min Case Count (Daily)	1
All Cases	Max Case Count (Daily)	23
All Cases	90TH% Case Count (Daily)	15
All Cases	+2 SD Case Count (Daily)	18
<b>All Cases</b>	<b>Suspected Opioid Cases</b>	<b>3,677</b>

SUSPECTED OPIOID CASES - DEATH INDICATED		
TYPE	NARCAN USE	COUNT
DEATH Cases	Narcan Used	27
DEATH Cases	Narcan <b>NOT</b> Used	28
<b>DEATH Cases</b>	<b>Suspected Opioid Cases</b>	<b>55</b>

SUSPECTED OPIOID CASES (ALL)		
COUNT	NUMBER OF DAYS	% DAYS
NO Cases	0 Days	0%
1 Case	2 Days	1%
2 Cases	4 Days	1%
3 Cases	8 Days	2%
4 Cases	12 Days	3%
5 Cases	11 Days	3%
6 Cases	23 Days	6%
7 Cases	37 Days	10%
8 Cases	34 Days	9%
9 Cases	43 Days	12%
10 Cases	26 Days	7%
11 Cases	45 Days	12%
12 Cases	33 Days	9%
13 Cases	23 Days	6%
14 Cases	16 Days	4%
15 Cases	13 Days	4%
16 Cases	15 Days	4%
17 Cases	13 Days	4%
18 Cases	4 Days	1%
19 Cases	2 Days	1%
≥ 20 Cases	2 Days	1%
<b>Total Days</b>	<b>366 Days</b>	<b>100%</b>

# DISTRICT OF COLUMBIA FIRE AND EMS DEPARTMENT

Suspected Opioid Cases: ALL CASES (10/01/2019 to 10/01/2020)

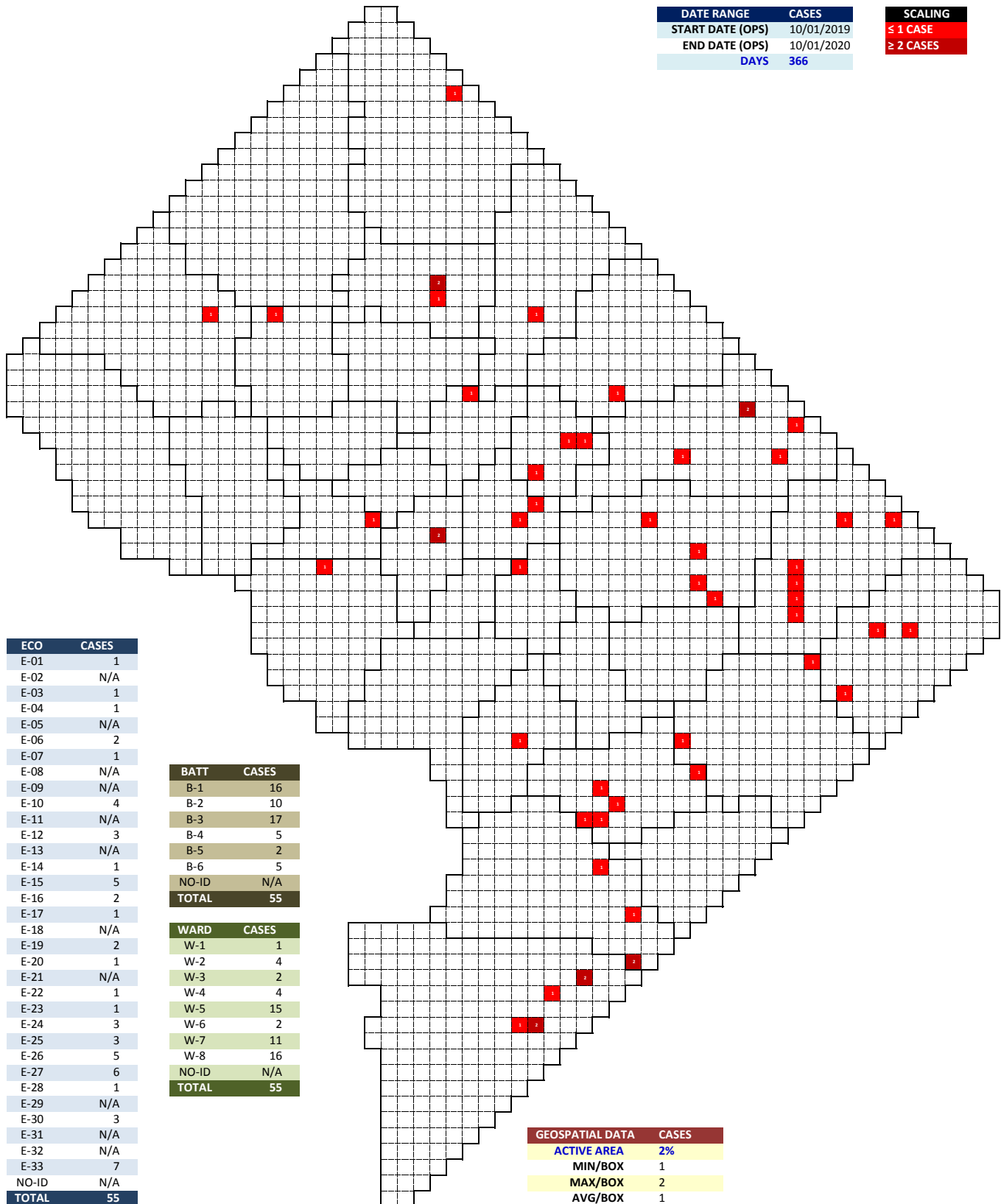


Suspected Opioid Cases: ALL CASES with NARCAN Use (10/01/2019 to 10/01/2020)



# DISTRICT OF COLUMBIA FIRE AND EMS DEPARTMENT

## Suspected Opioid Cases: KNOWN DEATHS (10/01/2019 to 10/01/2020)



**District of Columbia Fire and EMS Department**  
Suspected Opioid Cases: TRANSPORTS (10/01/2019 to 10/01/2020)

SUSPECTED OPIOID CASES (TRANSPORT)		
TYPE	NARCAN USE	COUNT
Transport Cases	Narcan Used	625
Transport Cases	Narcan <b>NOT</b> Used	1,491
<b>Transport Cases</b>	<b>Suspected Opioid Cases</b>	<b>2,116</b>

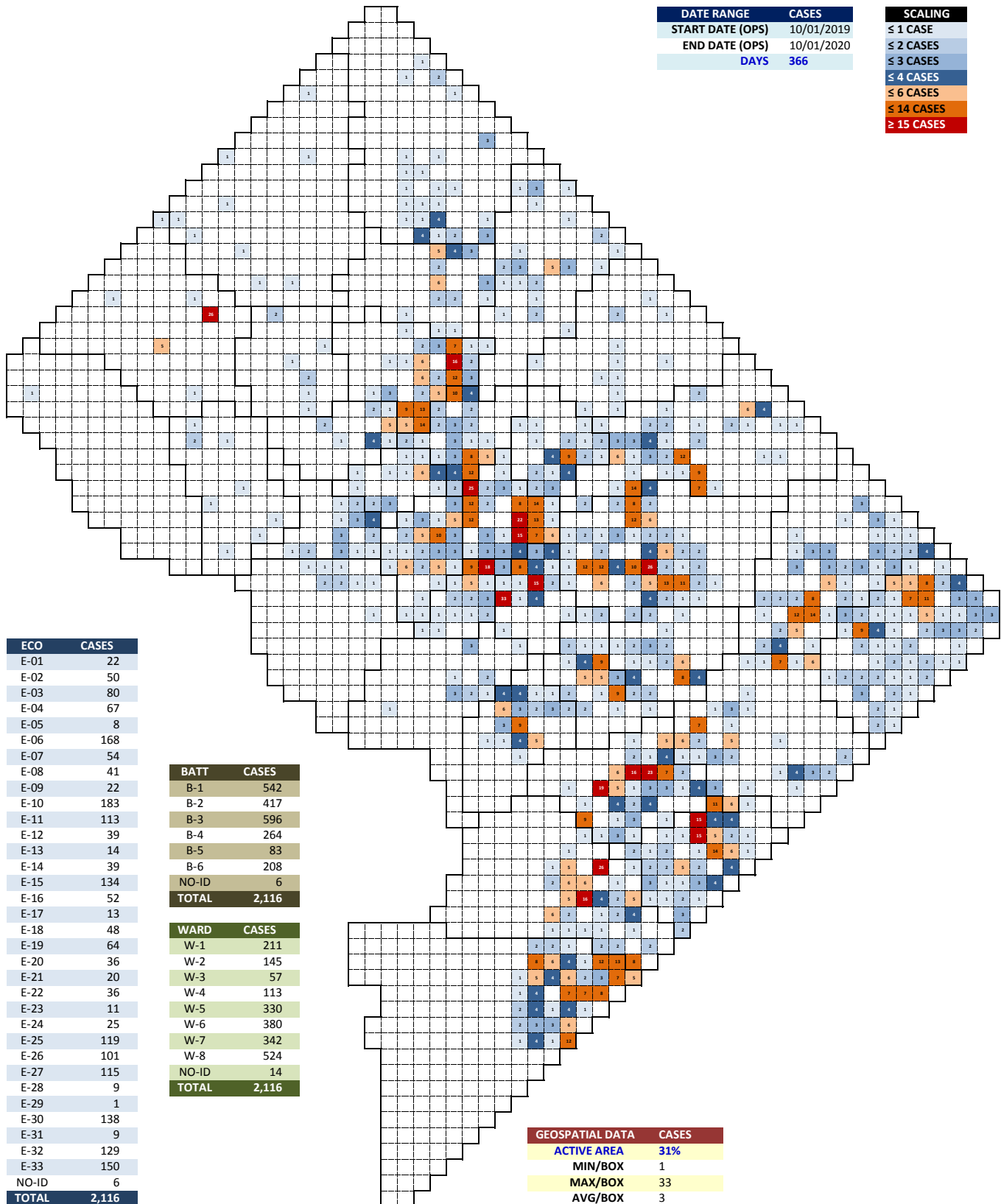
SUSPECTED OPIOID CASES (TRANSPORT)		
TYPE	DESCRIPTION	MEASURE
Transport Cases	Mean (Daily)	6
Transport Cases	Median (Daily)	6
Transport Cases	Mode (Daily)	4
Transport Cases	Min Case Count (Daily)	0
Transport Cases	Max Case Count (Daily)	15
Transport Cases	90TH% Case Count (Daily)	9
Transport Cases	+2 SD Case Count (Daily)	11
<b>Transport Cases</b>	<b>Suspected Opioid Cases</b>	<b>2,116</b>

SUSPECTED OPIOID CASES (TRANSPORT)	
HOSPITAL OR FACILITY	COUNT
H01-UNITED MEDICAL CENTER	451
H05-HOWARD UNIVERSITY HOSPITAL	521
H07-GEORGETOWN UNIVERSITY HOSPITAL	141
H08-GEORGE WASHINGTON UNIV HOSP	381
H12-SIBLEY MEMORIAL HOSPITAL	60
H13-WASHINGTON HOSPITAL CENTER	493
H15-VETERANS HOSPITAL DC	23
Other Hospital/Facility (DC)	6
Other Hospital/Facility (MD)	36
Other Hospital/Facility	4
<b>Total Transports</b>	<b>2,116</b>

SUSPECTED OPIOID CASES (TRANSPORT)		
COUNT	NUMBER OF DAYS	% DAYS
NO Cases	2 Days	1%
1 Case	13 Days	4%
2 Cases	17 Days	5%
3 Cases	43 Days	12%
4 Cases	59 Days	16%
5 Cases	40 Days	11%
6 Cases	52 Days	14%
7 Cases	46 Days	13%
8 Cases	38 Days	10%
9 Cases	25 Days	7%
10 Cases	16 Days	4%
11 Cases	7 Days	2%
12 Cases	3 Days	1%
13 Cases	3 Days	1%
14 Cases	1 Days	0%
15 Cases	1 Days	0%
16 Cases	0 Days	0%
17 Cases	0 Days	0%
18 Cases	0 Days	0%
19 Cases	0 Days	0%
≥ 20 Cases	0 Days	0%
<b>Total Days</b>	<b>366 Days</b>	<b>100%</b>

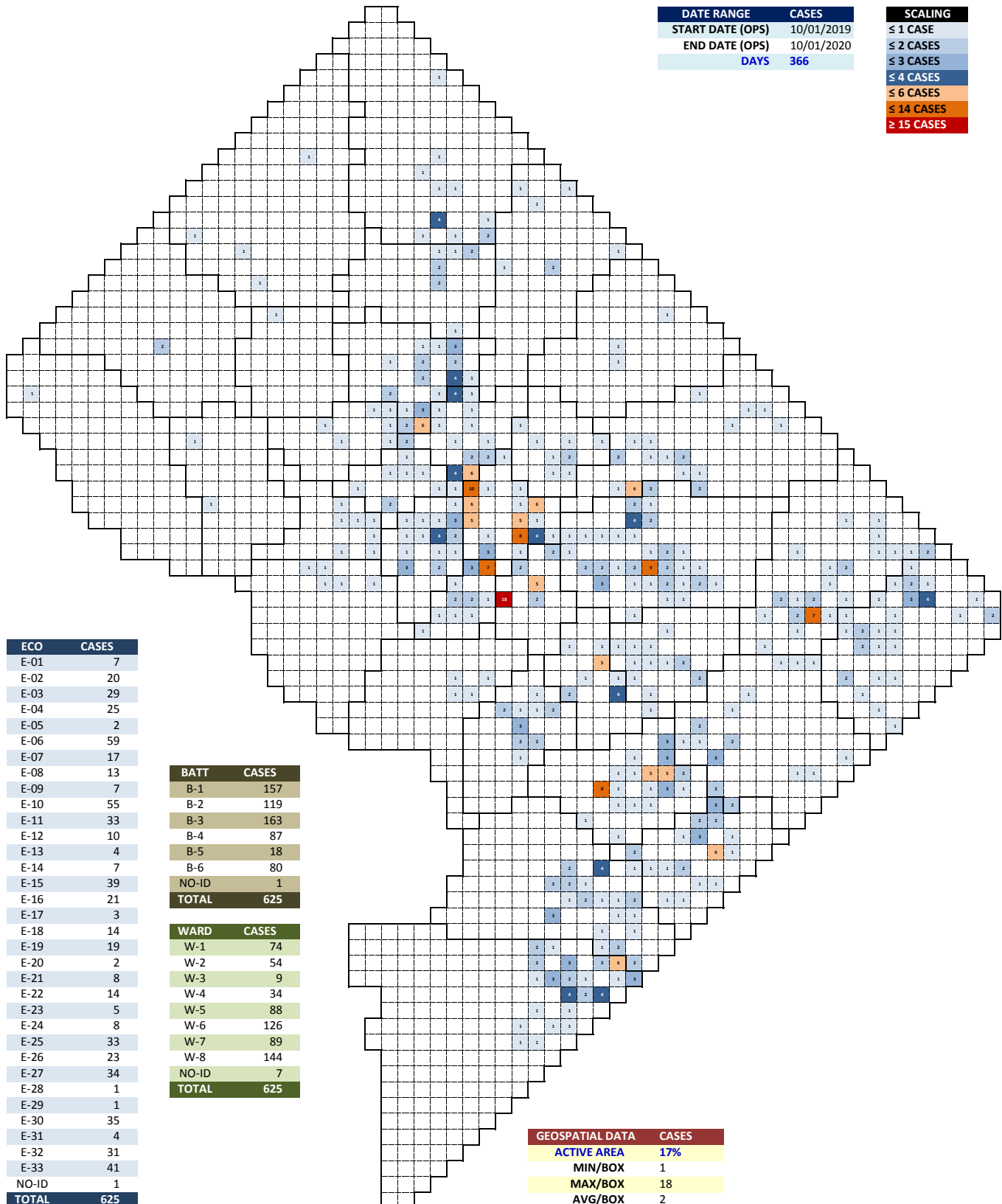
# DISTRICT OF COLUMBIA FIRE AND EMS DEPARTMENT

Suspected Opioid Cases: TRANSPORTS (10/01/2019 to 10/01/2020)



# DISTRICT OF COLUMBIA FIRE AND EMS DEPARTMENT

Suspected Opioid Cases: TRANSPORTS with NARCAN Use (10/01/2019 to 10/01/2020)





**District of Columbia Fire and EMS Department**  
 Suspected Opioid Cases: NO-LOADS (10/01/2019 to 10/01/2020)

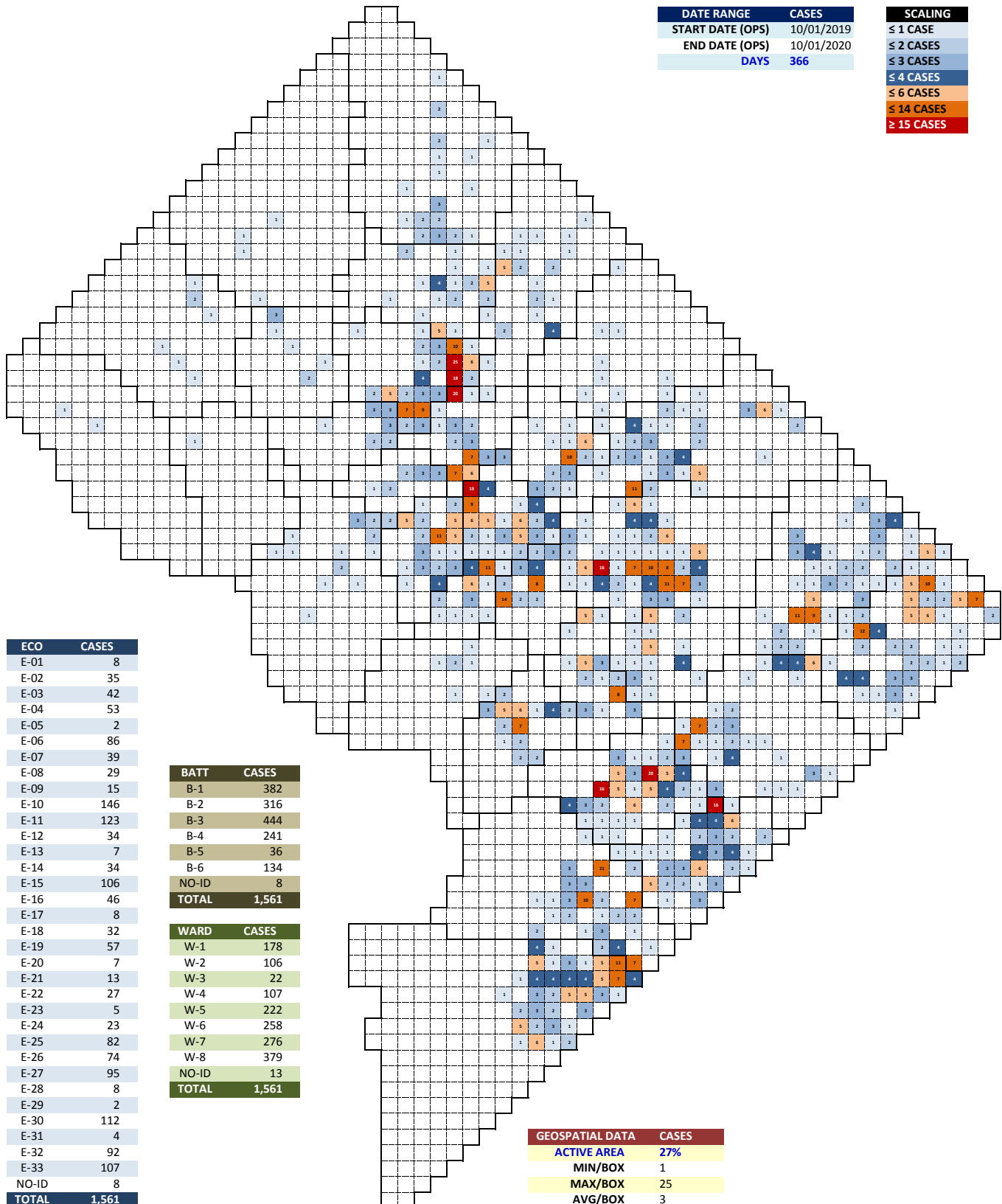
SUSPECTED OPIOID CASES (NO-LOAD)		
TYPE	NARCAN USE	COUNT
No-Load Cases	Narcan Used	897
No-Load Cases	Narcan <b>NOT</b> Used	664
<b>No-Load Cases</b>	<b>Suspected Opioid Cases</b>	<b>1,561</b>

SUSPECTED OPIOID CASES (NO-LOAD)		
TYPE	DESCRIPTION	MEASURE
No-Load Cases	Mean (Daily)	4
No-Load Cases	Median (Daily)	4
No-Load Cases	Mode (Daily)	4
No-Load Cases	Min Case Count (Daily)	0
No-Load Cases	Max Case Count (Daily)	13
No-Load Cases	90TH% Case Count (Daily)	7
No-Load Cases	+2 SD Case Count (Daily)	9
<b>No-Load Cases</b>	<b>Suspected Opioid Cases</b>	<b>1,561</b>

SUSPECTED OPIOID CASES (NO-LOAD)		
COUNT	NUMBER OF DAYS	% DAYS
NO Cases	9 Days	2%
1 Case	22 Days	6%
2 Cases	53 Days	14%
3 Cases	57 Days	16%
4 Cases	70 Days	19%
5 Cases	60 Days	16%
6 Cases	37 Days	10%
7 Cases	30 Days	8%
8 Cases	13 Days	4%
9 Cases	9 Days	2%
10 Cases	3 Days	1%
11 Cases	2 Days	1%
12 Cases	0 Days	0%
13 Cases	1 Days	0%
14 Cases	0 Days	0%
15 Cases	0 Days	0%
16 Cases	0 Days	0%
17 Cases	0 Days	0%
18 Cases	0 Days	0%
19 Cases	0 Days	0%
≥ 20 Cases	0 Days	0%
<b>Total Days</b>	<b>366 Days</b>	<b>100%</b>

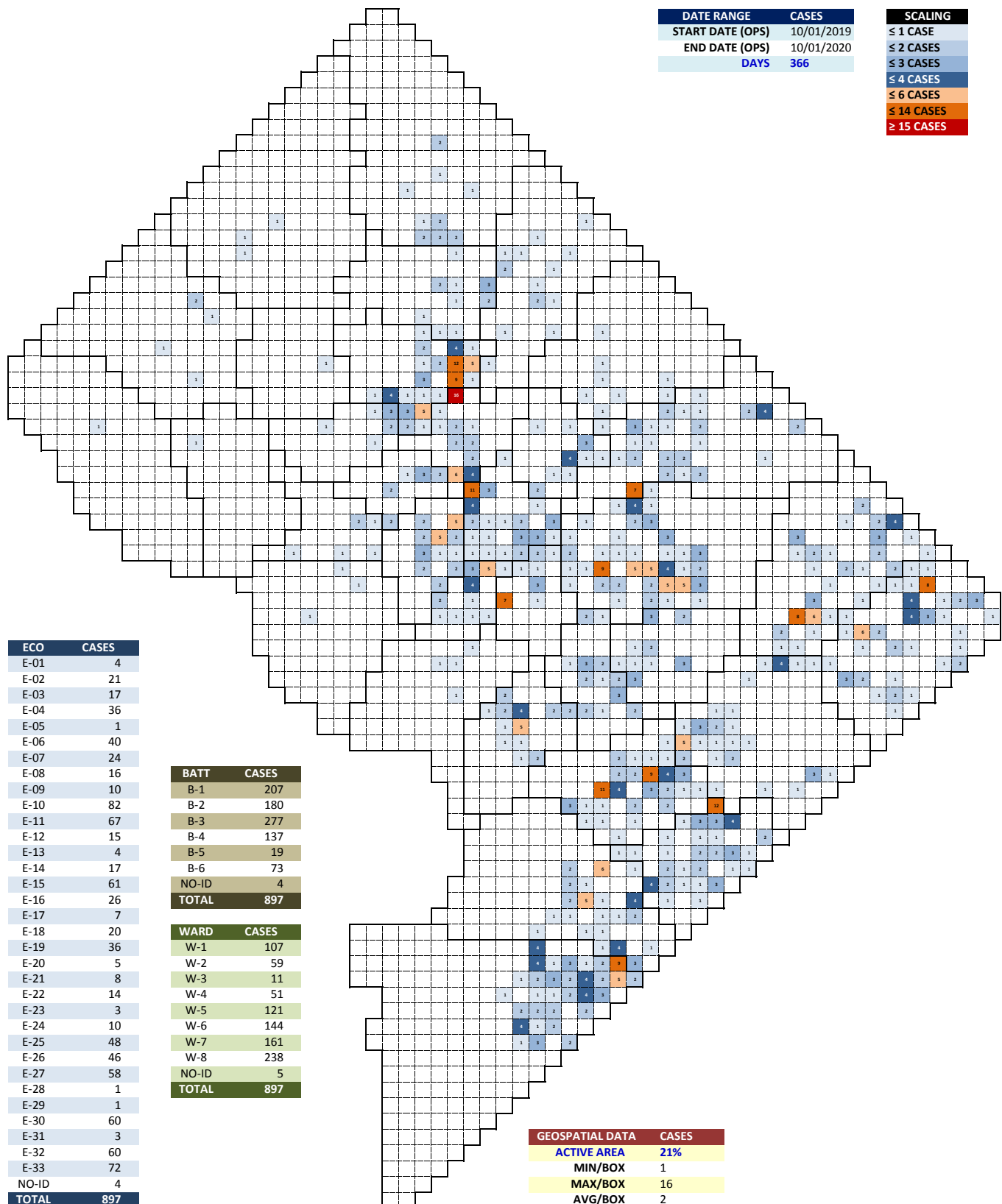
# DISTRICT OF COLUMBIA FIRE AND EMS DEPARTMENT

Suspected Opioid Cases: NO LOADS (10/01/2019 to 10/01/2020)



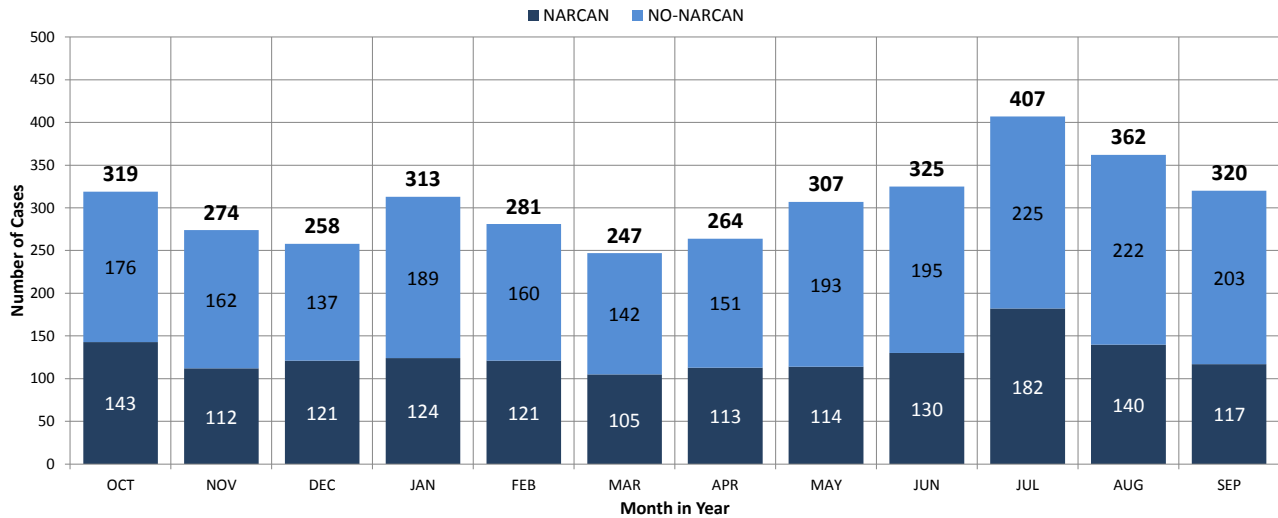
# DISTRICT OF COLUMBIA FIRE AND EMS DEPARTMENT

Suspected Opioid Cases: NO LOADS with NARCAN Use (10/01/2019 to 10/01/2020)

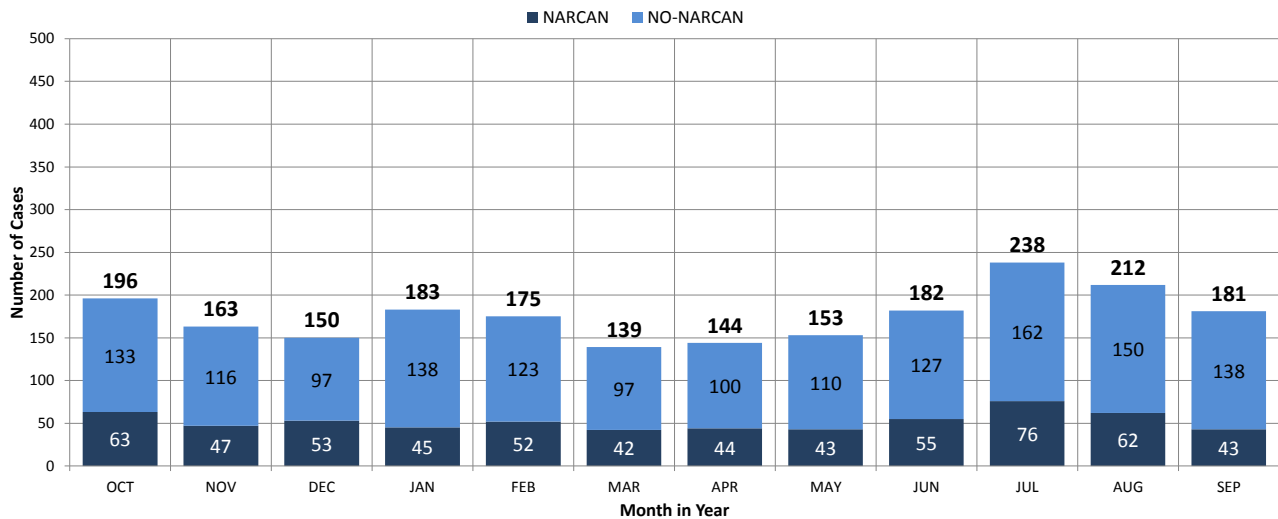


# DISTRICT OF COLUMBIA FIRE AND EMS DEPARTMENT

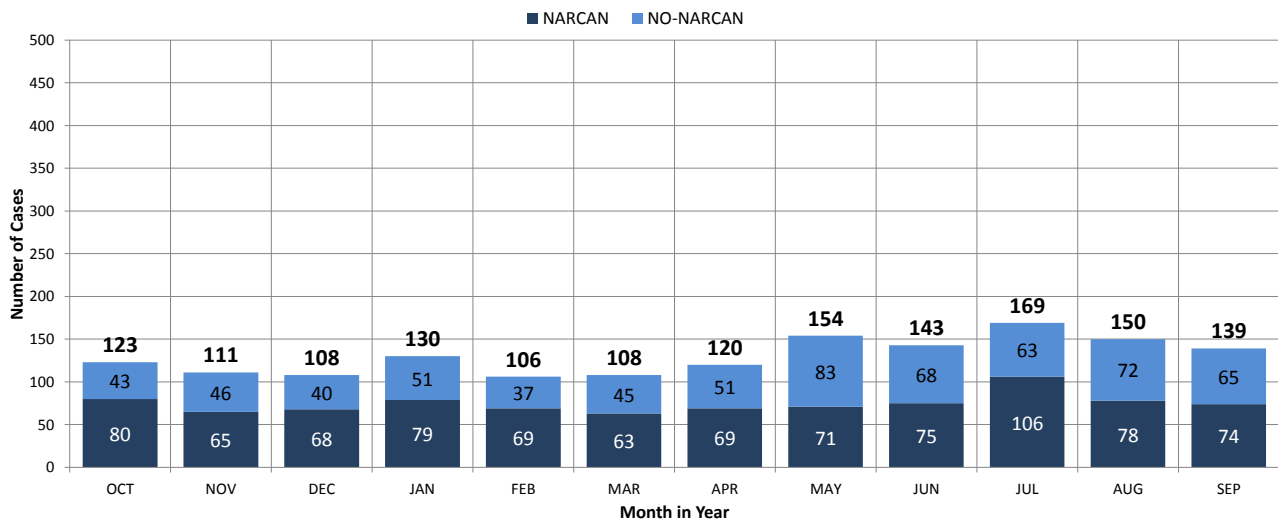
## Suspected Opioid Cases: ALL CASES (10/01/2019 to 10/01/2020)



## Suspected Opioid Cases: TRANSPORTS (10/01/2019 to 10/01/2020)

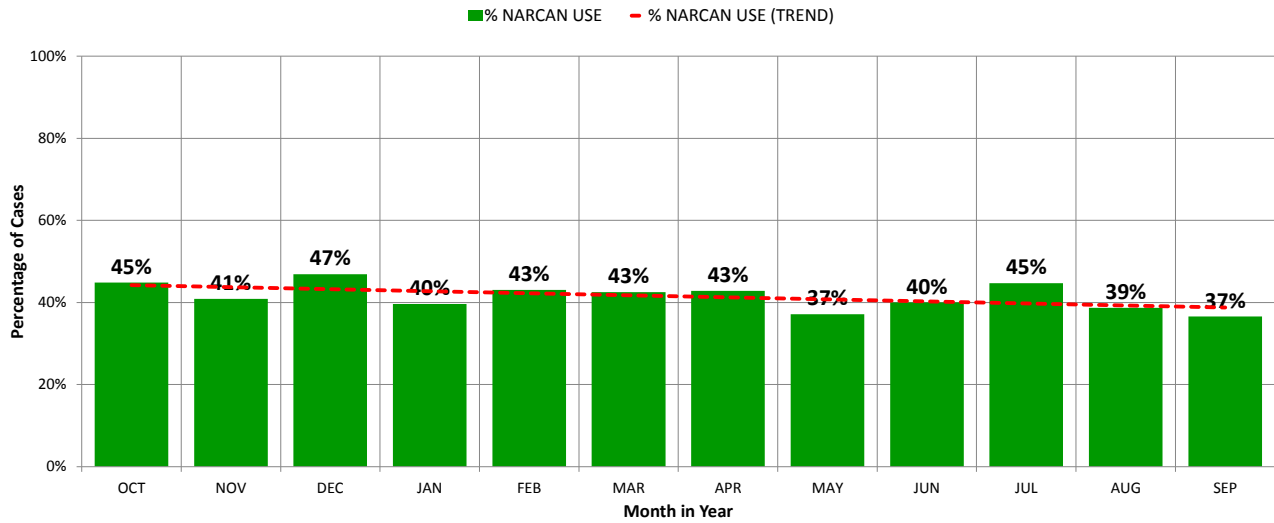


## Suspected Opioid Cases: NO LOADS (10/01/2019 to 10/01/2020)

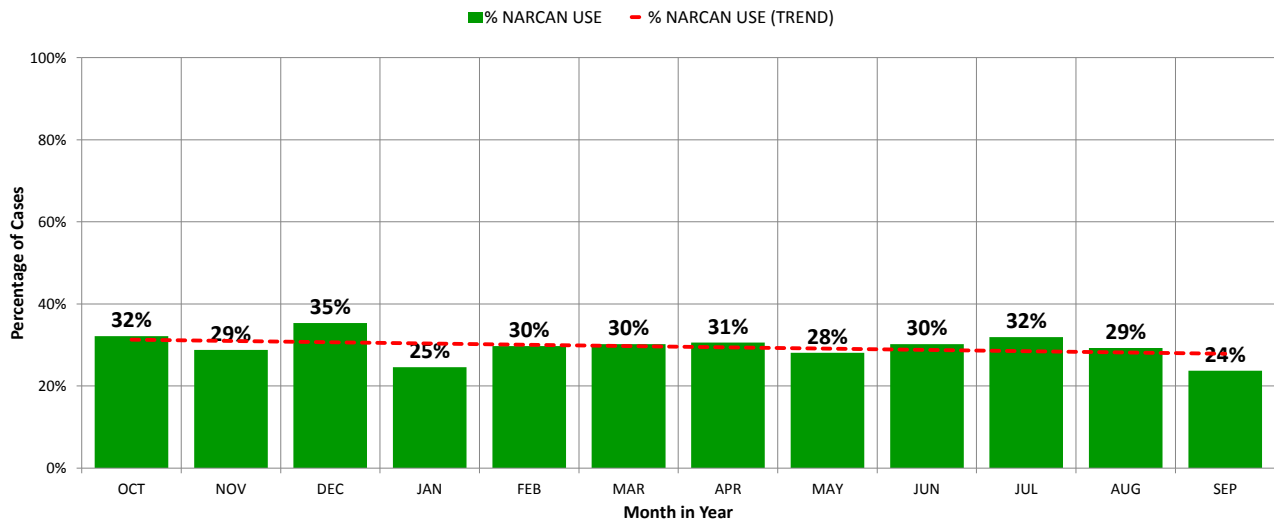


# DISTRICT OF COLUMBIA FIRE AND EMS DEPARTMENT

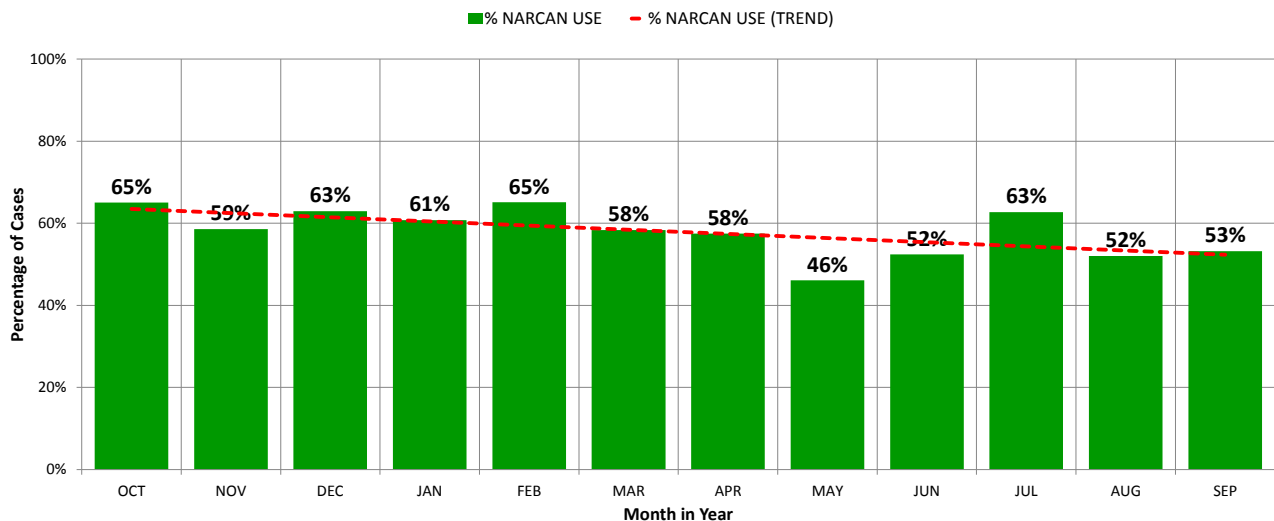
## Suspected Opioid Cases: ALL CASES - % NARCAN USE (10/01/2019 to 10/01/2020)



## Suspected Opioid Cases: TRANSPORTS - % NARCAN USE (10/01/2019 to 10/01/2020)

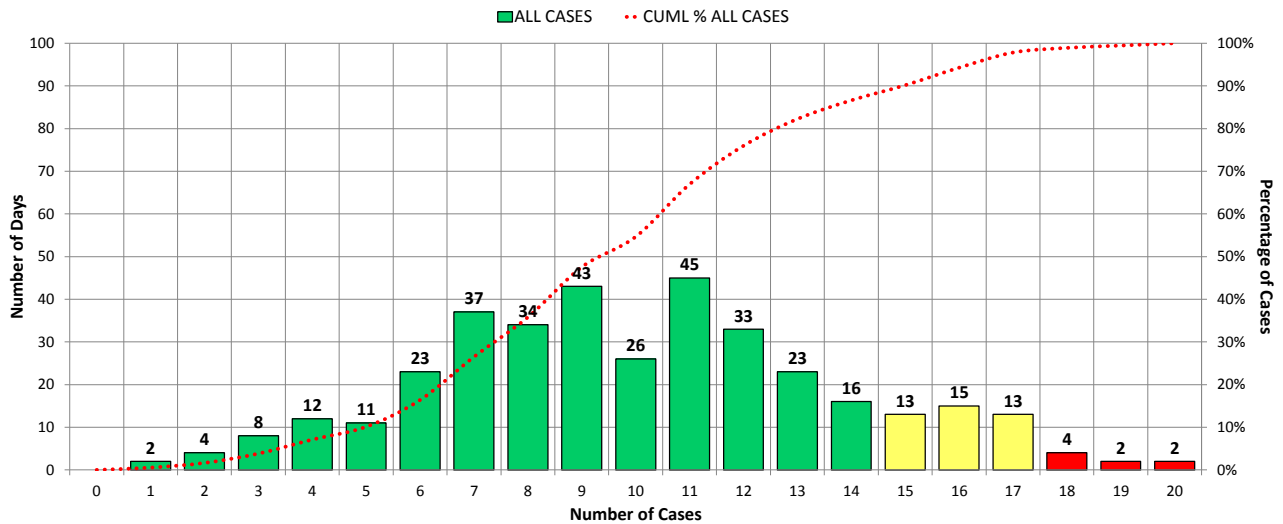


## Suspected Opioid Cases: NO LOADS - % NARCAN USE (10/01/2019 to 10/01/2020)

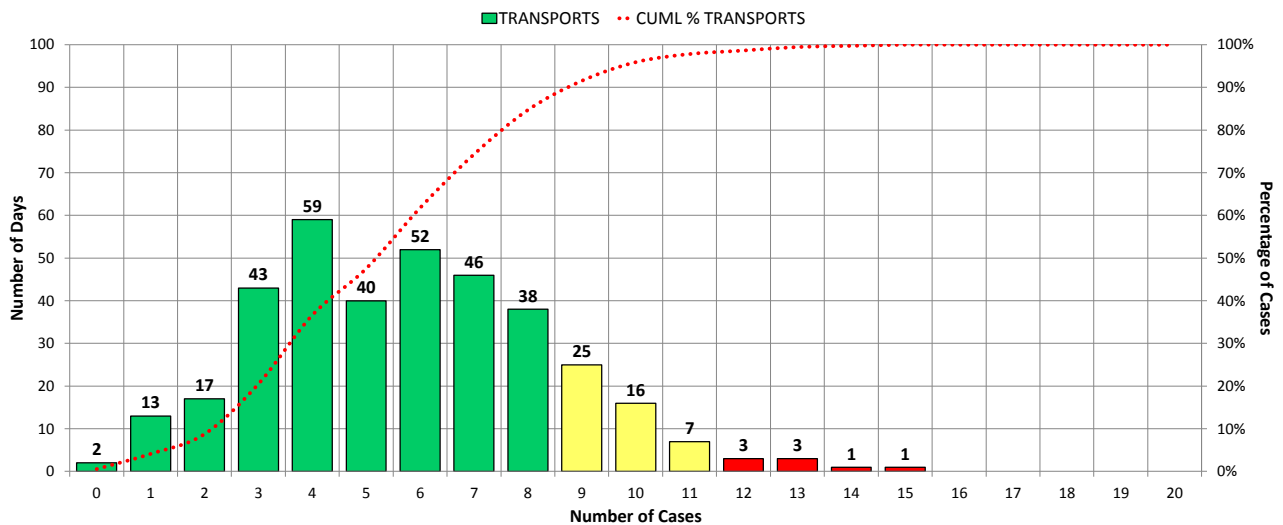


# DISTRICT OF COLUMBIA FIRE AND EMS DEPARTMENT

## Suspected Opioid Cases: ALL CASES - DISTRIBUTION (10/01/2019 to 10/01/2020)



## Suspected Opioid Cases: TRANSPORTS - DISTRIBUTION (10/01/2019 to 10/01/2020)



## Suspected Opioid Cases: NO LOADS - DISTRIBUTION (10/01/2019 to 10/01/2020)

