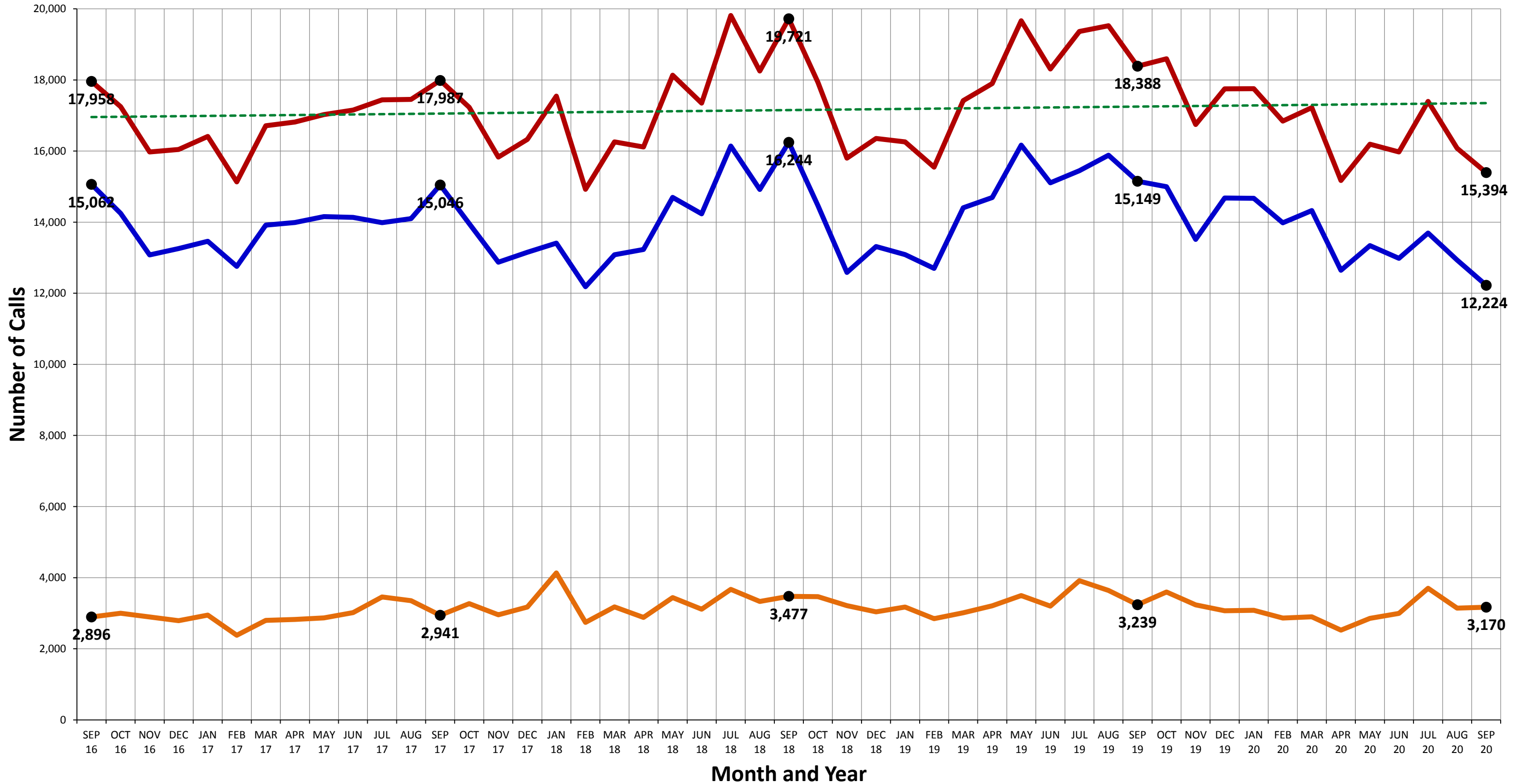


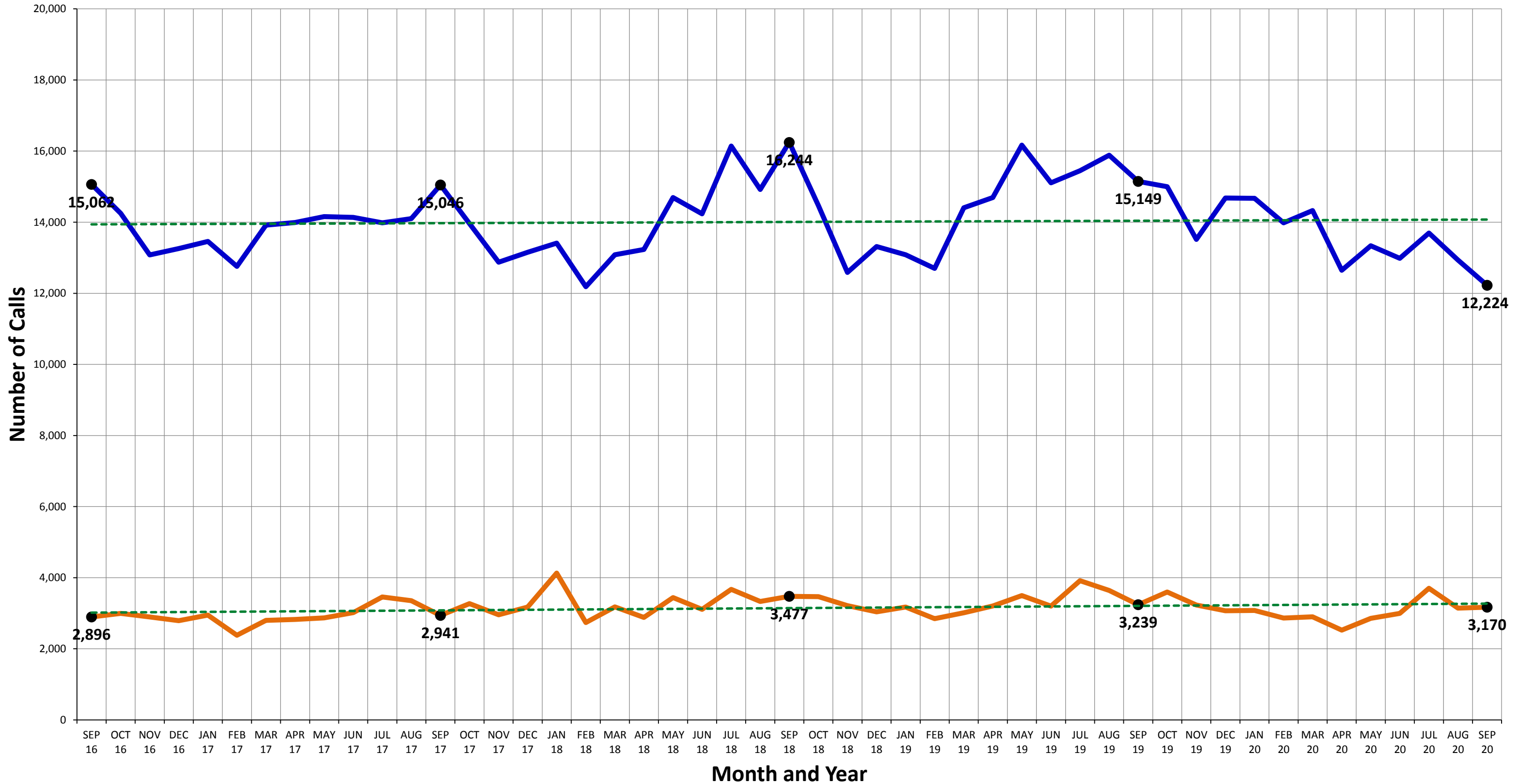
Fire and EMS Call Counts with Trend Line Analysis (FY 2016 to FY 2020)

—●— EMS Calls (ALL)
 —●— Fire/OTH Calls (ALL)
 —●— Fire and EMS Calls (ALL)
 - - - Trend Line (Fire and EMS Calls)

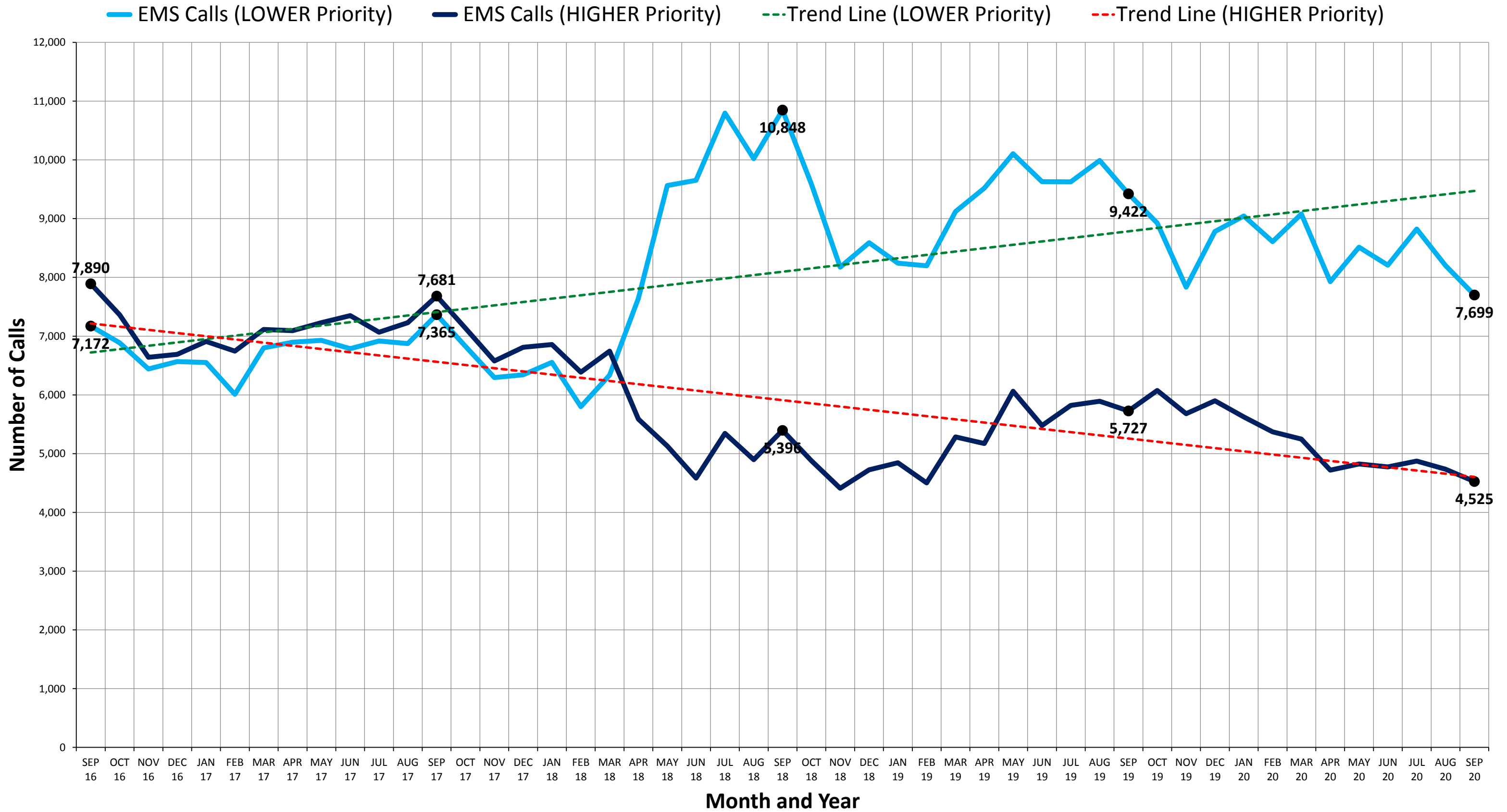


Fire and EMS Call Counts with Trend Line Analysis (FY 2016 to FY 2020)

—●— EMS Calls (ALL)
 —●— Fire/OTH Calls (ALL)
 - - - Trend Line (EMS Calls)
 - - - Trend Line (Fire/OTH Calls)



EMS Call Counts by Dispatch Priority with Trend Line Analysis (FY 2016 to FY 2020)



EMS Call Counts and DCFEMS Transports with Trend Line Analysis (FY 2016 to FY 2020)

—●— EMS Calls (ALL)
 —●— DCFEMS Transport Calls
 - - - Trend Line (EMS Calls)
 - - - Trend Line (Transport Calls)

