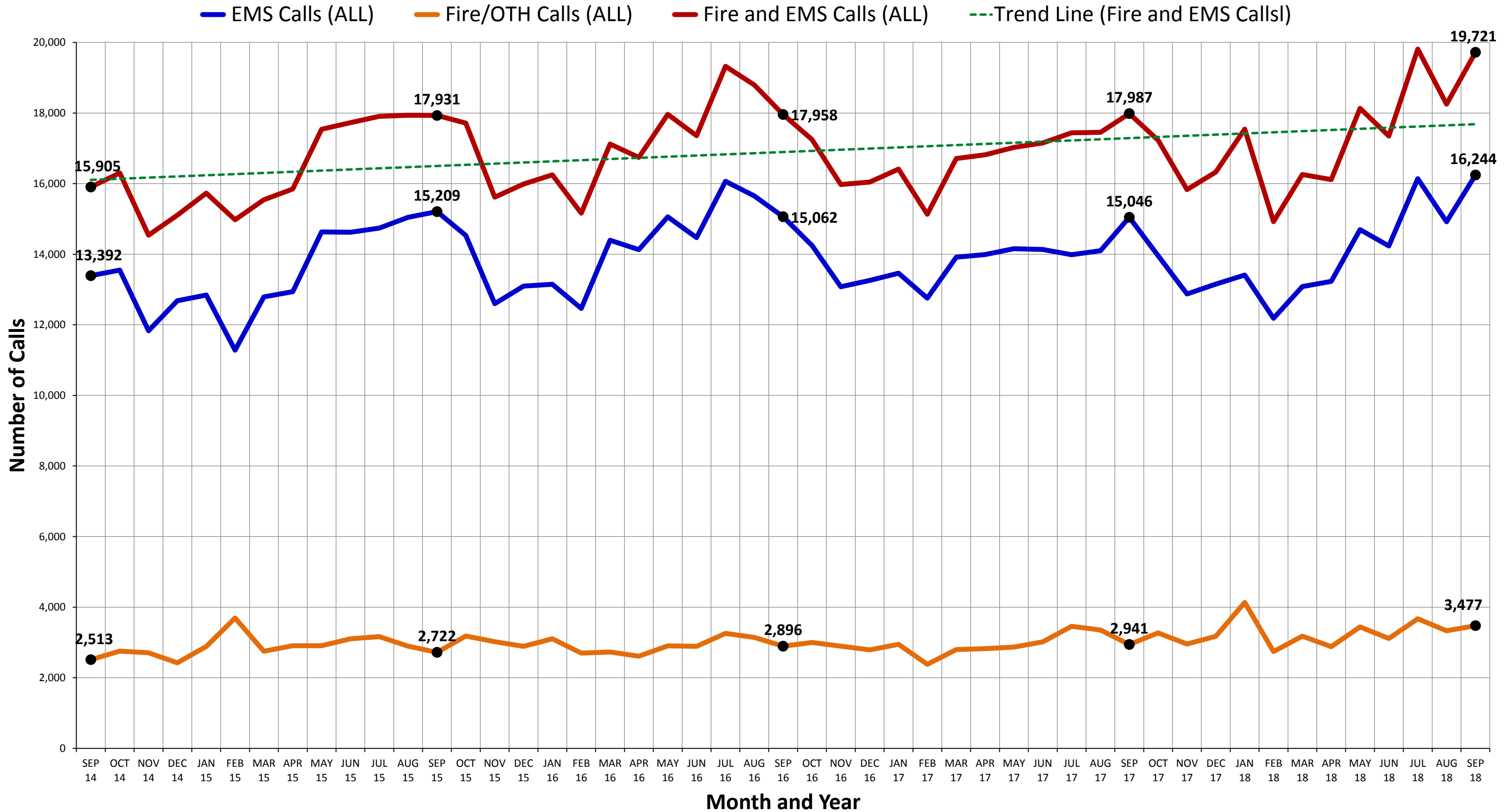
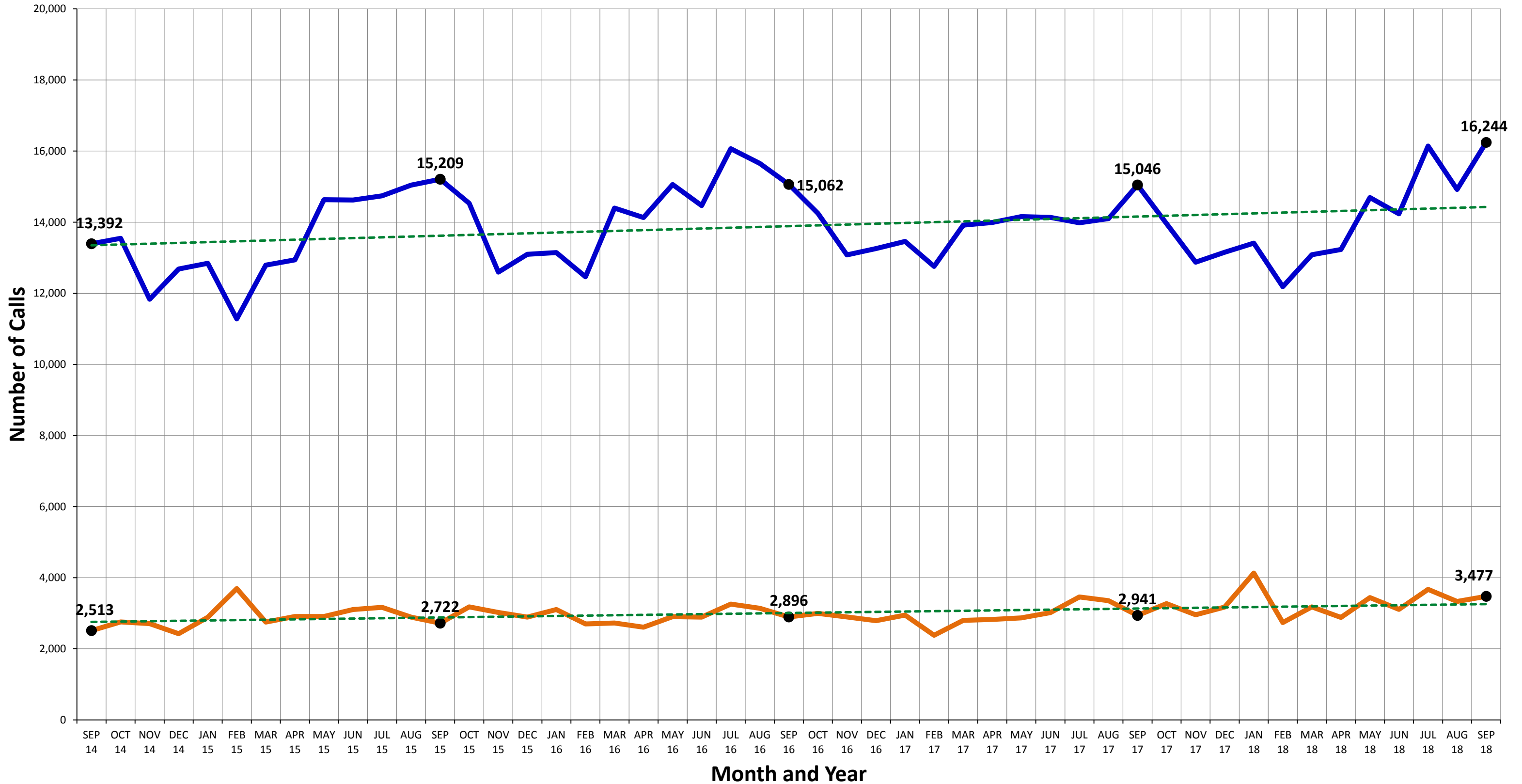


Fire and EMS Call Counts with Trend Line Analysis (FY 2014 to FY 2018)

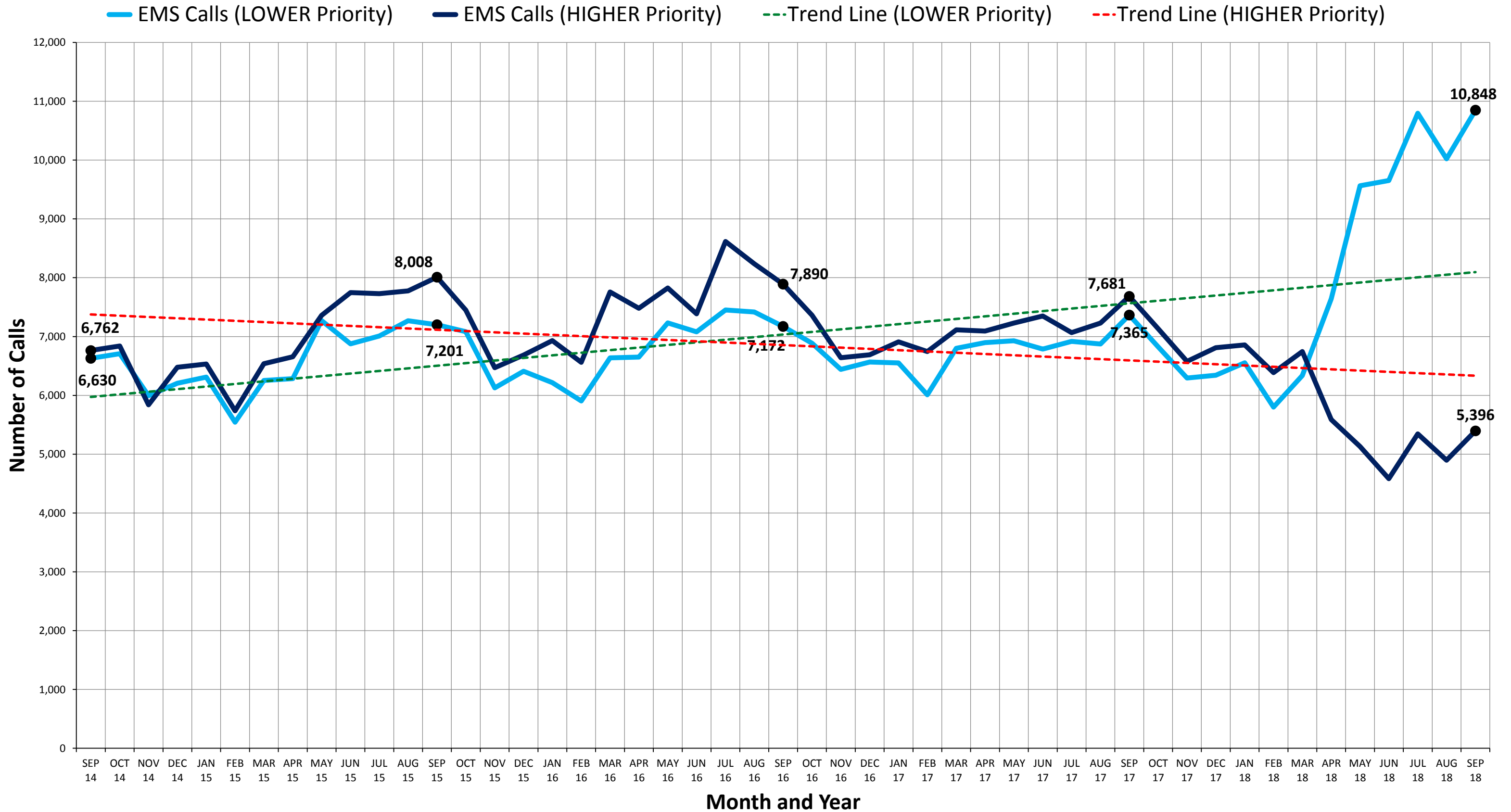


Fire and EMS Call Counts with Trend Line Analysis (FY 2014 to FY 2018)

—●— EMS Calls (ALL)
 —●— Fire/OTH Calls (ALL)
 - - - Trend Line (EMS Calls)
 - - - Trend Line (Fire/OTH Calls)



EMS Call Counts by Dispatch Priority with Trend Line Analysis (FY 2014 to FY 2018)



EMS Call Counts and DCFEMS Transports with Trend Line Analysis (FY 2014 to FY 2018)

—●— EMS Calls (ALL)
 —●— DCFEMS Transport Calls
 - - - Trend Line (EMS Calls)
 - - - Trend Line (Transport Calls)

