

DISTRICT OF COLUMBIA FIRE AND EMS DEPARTMENT



Transport Unit Availability Compliance ALL DAYS (OCT-22)

PRODUCED ON: 12/20/2022

DAYS and MONTH		FULL ALS BLS ALL	PART ALS BLS ALL	NON ALS BLS ALL	PAGE
ALL DAYS (OCT-22)		75% 65% 80%	24% 33% 20%	1% 2% 0%	2

DATE (OPS)	DOW (OPS)	ALS FULL PART NON	BLS FULL PART NON	ALL FULL PART NON	PAGE
10/01/22	SAT	88% 13% 0%	83% 17% 0%	100% 0% 0%	3
10/02/22	SUN	100% 0% 0%	100% 0% 0%	100% 0% 0%	4
10/03/22	MON	75% 25% 0%	63% 38% 0%	88% 13% 0%	5
10/04/22	TUE	88% 13% 0%	71% 29% 0%	92% 8% 0%	6
10/05/22	WED	50% 50% 0%	71% 25% 4%	71% 29% 0%	7
10/06/22	THU	46% 54% 0%	54% 46% 0%	67% 33% 0%	8
10/07/22	FRI	54% 46% 0%	46% 54% 0%	58% 42% 0%	9
10/08/22	SAT	92% 8% 0%	71% 29% 0%	83% 17% 0%	10
10/09/22	SUN	100% 0% 0%	75% 25% 0%	96% 4% 0%	11
10/10/22	MON	88% 13% 0%	75% 25% 0%	88% 13% 0%	12
10/11/22	TUE	63% 33% 4%	58% 42% 0%	67% 33% 0%	13
10/12/22	WED	58% 42% 0%	63% 38% 0%	71% 29% 0%	14
10/13/22	THU	96% 4% 0%	79% 21% 0%	96% 4% 0%	15
10/14/22	FRI	67% 29% 4%	33% 54% 13%	58% 42% 0%	16
10/15/22	SAT	88% 13% 0%	92% 8% 0%	92% 8% 0%	17
10/16/22	SUN	88% 13% 0%	92% 8% 0%	96% 4% 0%	18
10/17/22	MON	67% 33% 0%	46% 38% 17%	54% 46% 0%	19
10/18/22	TUE	75% 25% 0%	67% 33% 0%	96% 4% 0%	20
10/19/22	WED	79% 21% 0%	79% 21% 0%	92% 8% 0%	21
10/20/22	THU	63% 38% 0%	54% 46% 0%	67% 33% 0%	22
10/21/22	FRI	88% 13% 0%	54% 46% 0%	79% 21% 0%	23
10/22/22	SAT	63% 33% 4%	38% 63% 0%	67% 33% 0%	24
10/23/22	SUN	83% 17% 0%	71% 29% 0%	96% 4% 0%	25
10/24/22	MON	46% 46% 8%	54% 38% 8%	58% 38% 4%	26
10/25/22	TUE	58% 38% 4%	50% 46% 4%	58% 42% 0%	27
10/26/22	WED	79% 21% 0%	83% 17% 0%	96% 4% 0%	28
10/27/22	THU	67% 33% 0%	71% 29% 0%	79% 21% 0%	29
10/28/22	FRI	71% 25% 4%	50% 50% 0%	71% 29% 0%	30
10/29/22	SAT	79% 21% 0%	38% 54% 8%	67% 33% 0%	31
10/30/22	SUN	83% 17% 0%	83% 17% 0%	92% 8% 0%	32
10/31/22	MON	75% 25% 0%	63% 33% 4%	79% 21% 0%	33
ALL DAYS (OCT-22)		75% 24% 1%	65% 33% 2%	80% 20% 0%	

START DATE

10/01/2022

TOTAL DAYS

31

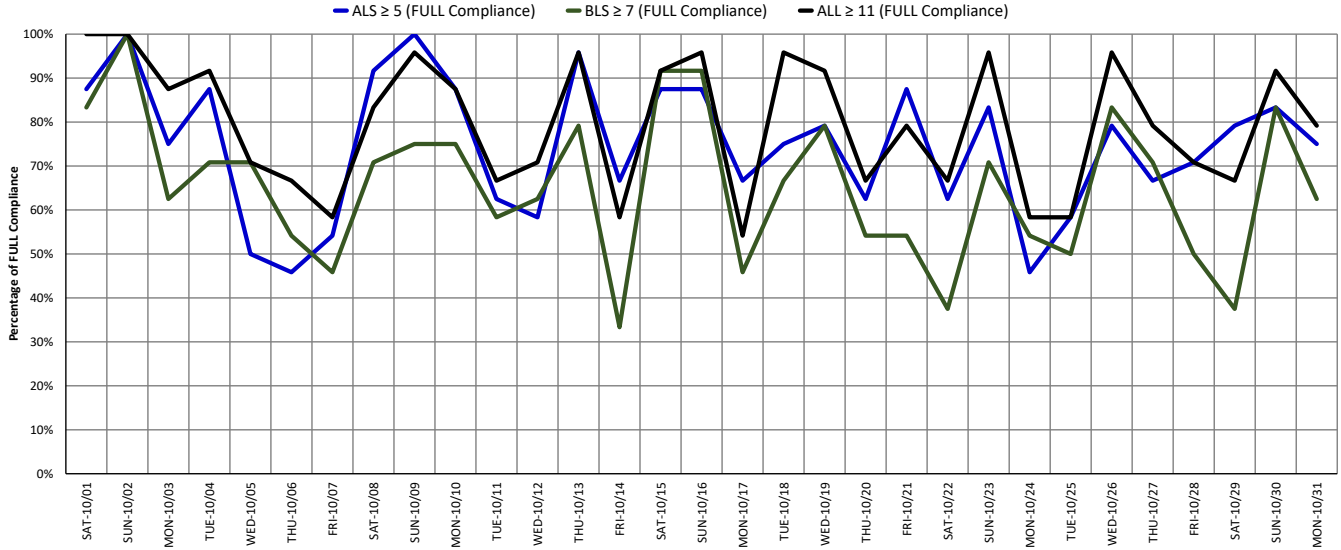
END DATE

10/31/2022

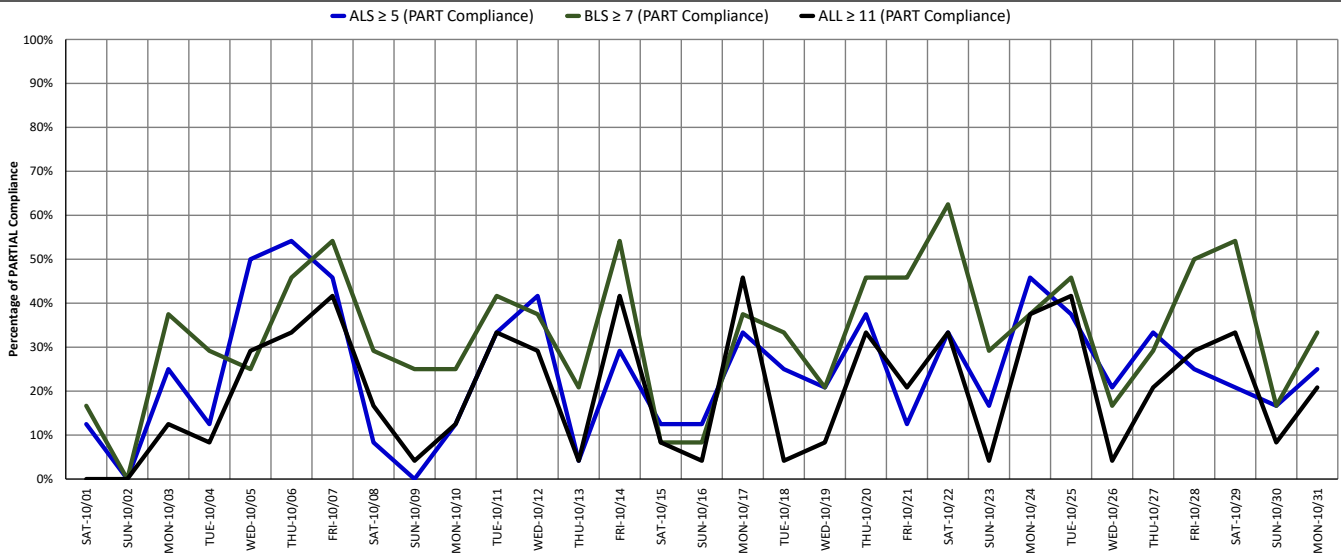
Raw Data Error: 0 HRS (0.00%)

DISTRICT OF COLUMBIA FIRE AND EMS DEPARTMENT

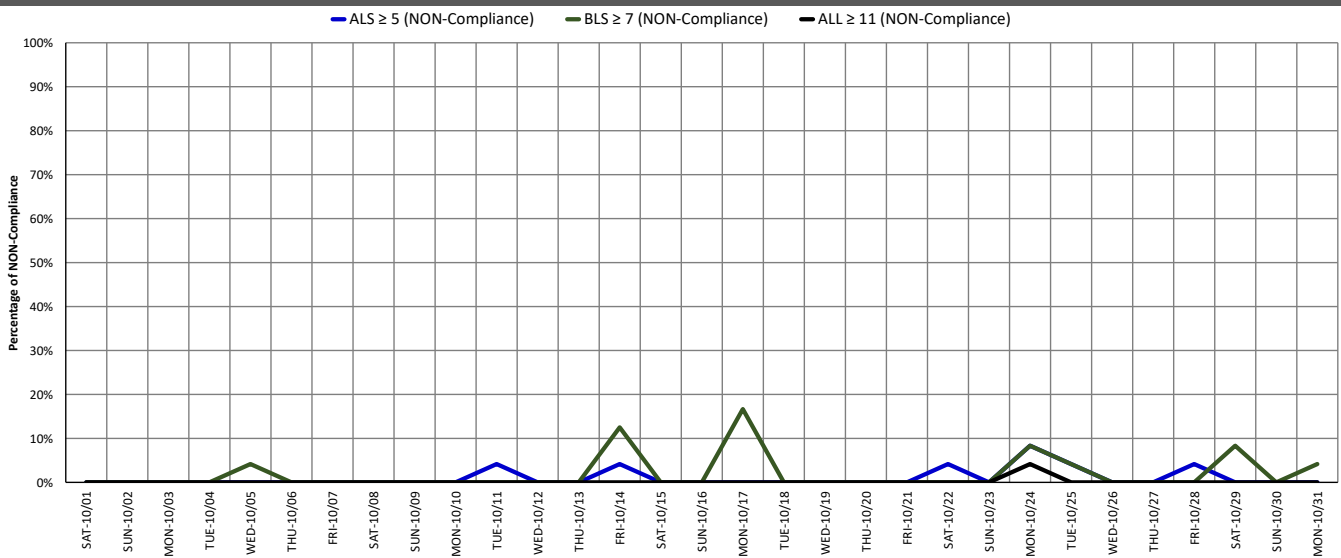
% of Transport Unit Availability FULL Compliance: ALL DAYS (OCT-22)



% of Transport Unit Availability PARTIAL Compliance: ALL DAYS (OCT-22)

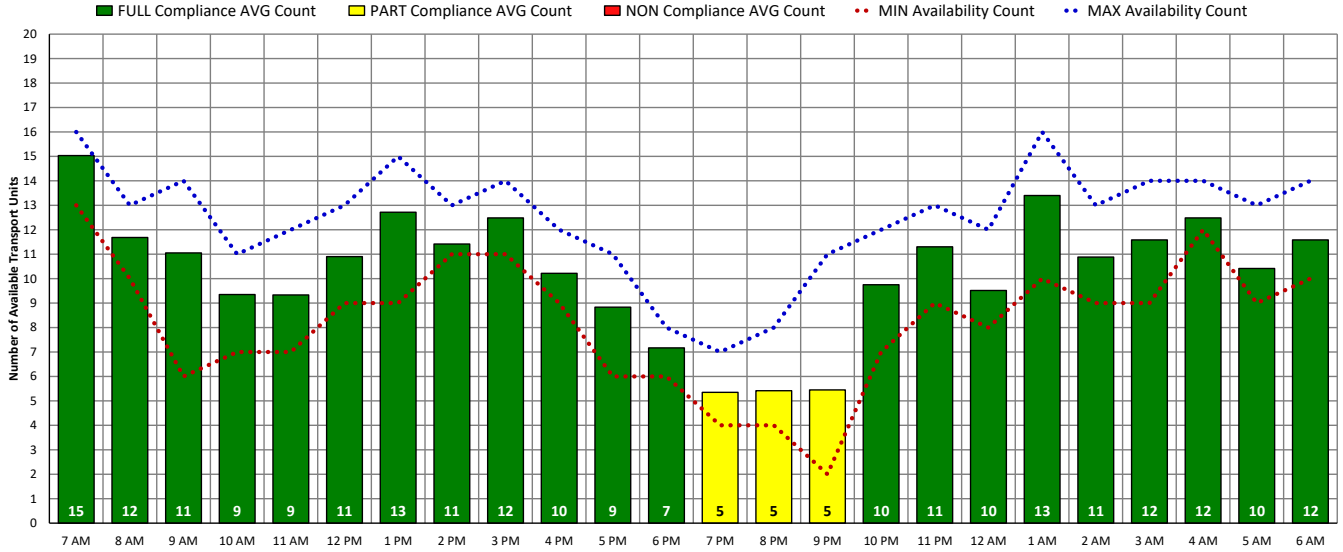


% of Transport Unit Availability NON-Compliance: ALL DAYS (OCT-22)

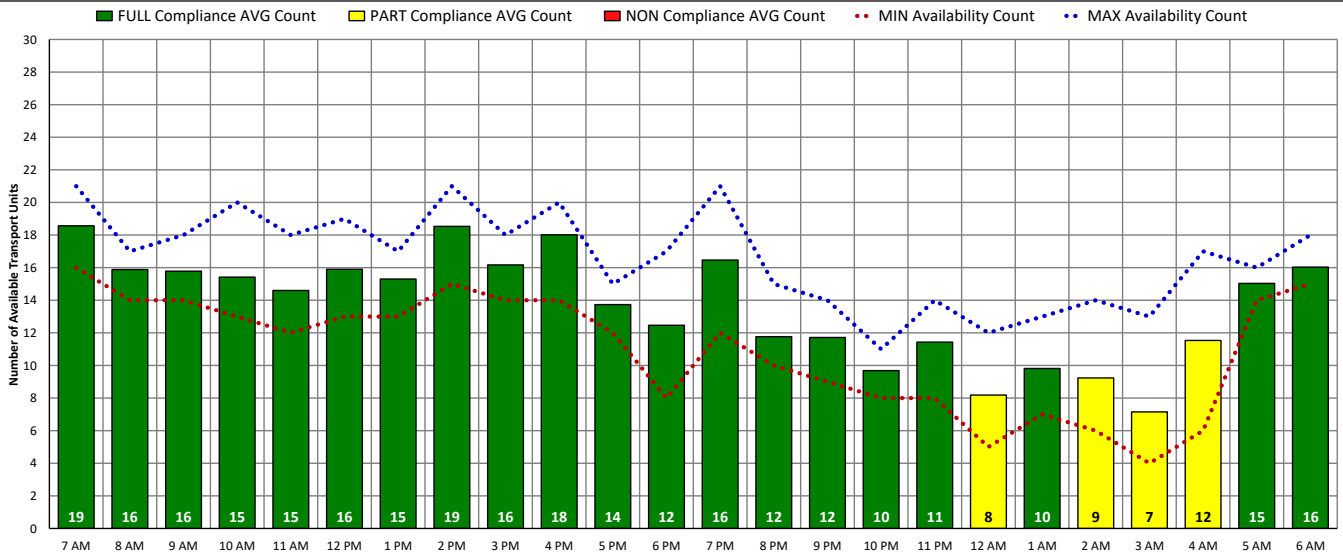


DISTRICT OF COLUMBIA FIRE AND EMS DEPARTMENT

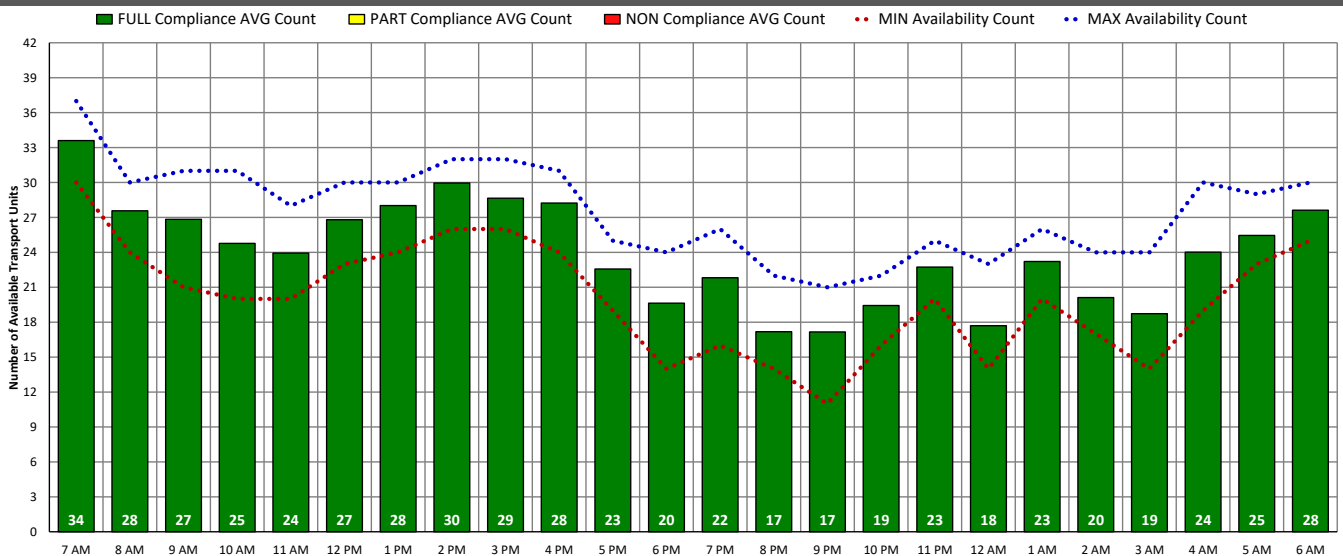
ALS Transport Unit Availability Compliance (SAT – 10/01/22)



BLS Transport Unit Availability Compliance (SAT – 10/01/22)

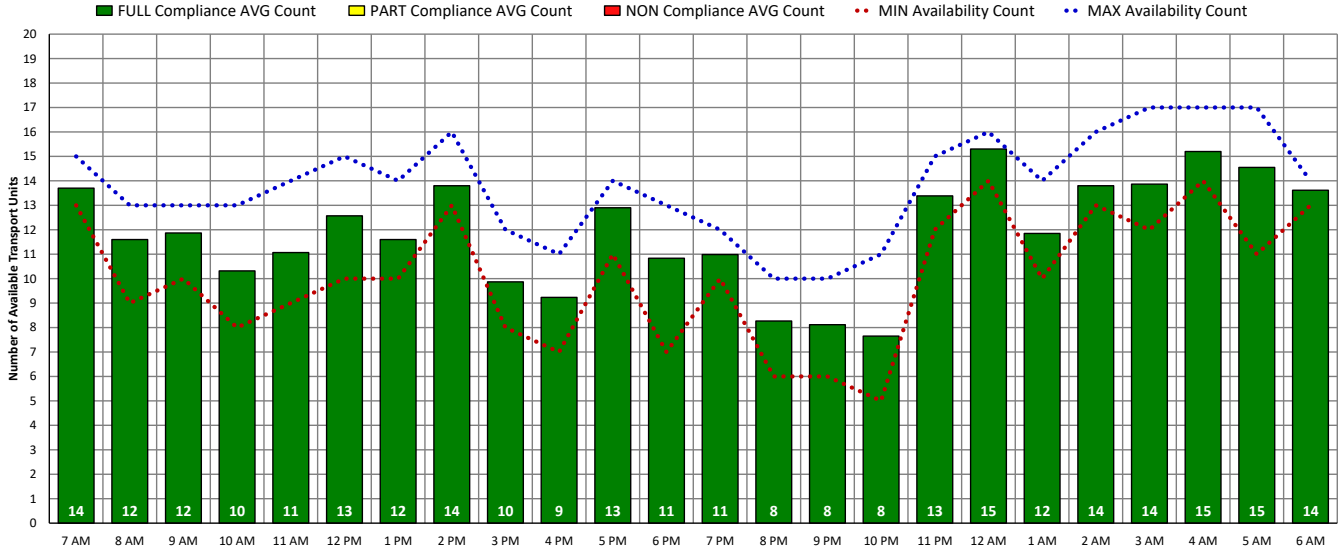


ALL Transport Unit Availability Compliance (SAT – 10/01/22)

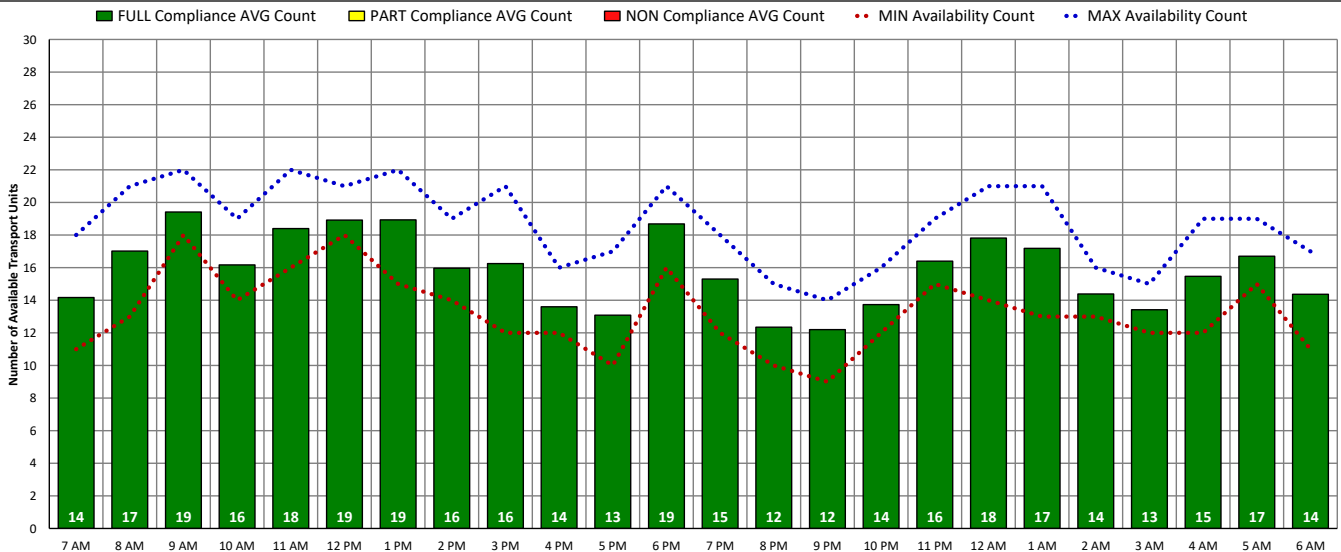


DISTRICT OF COLUMBIA FIRE AND EMS DEPARTMENT

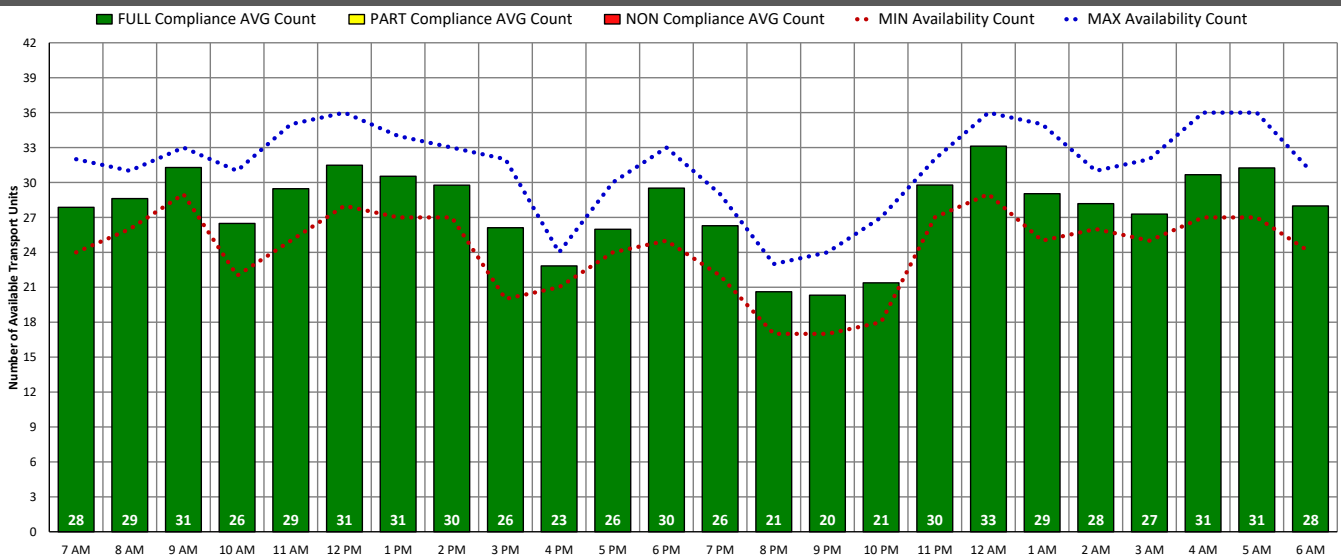
ALS Transport Unit Availability Compliance (SUN – 10/02/22)



BLS Transport Unit Availability Compliance (SUN – 10/02/22)

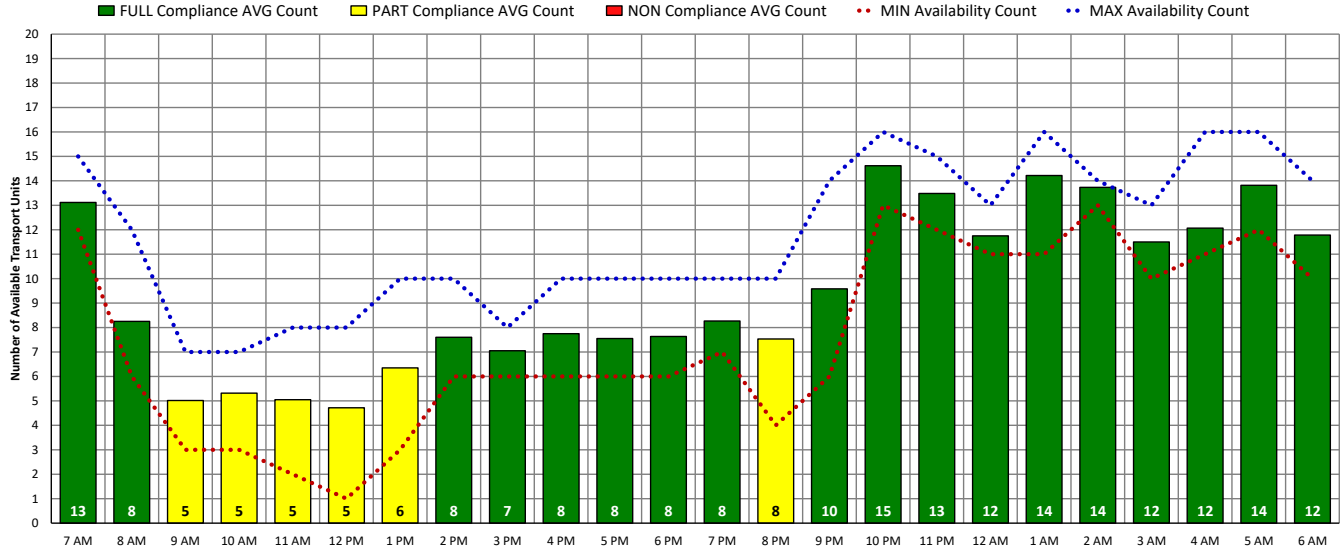


ALL Transport Unit Availability Compliance (SUN – 10/02/22)

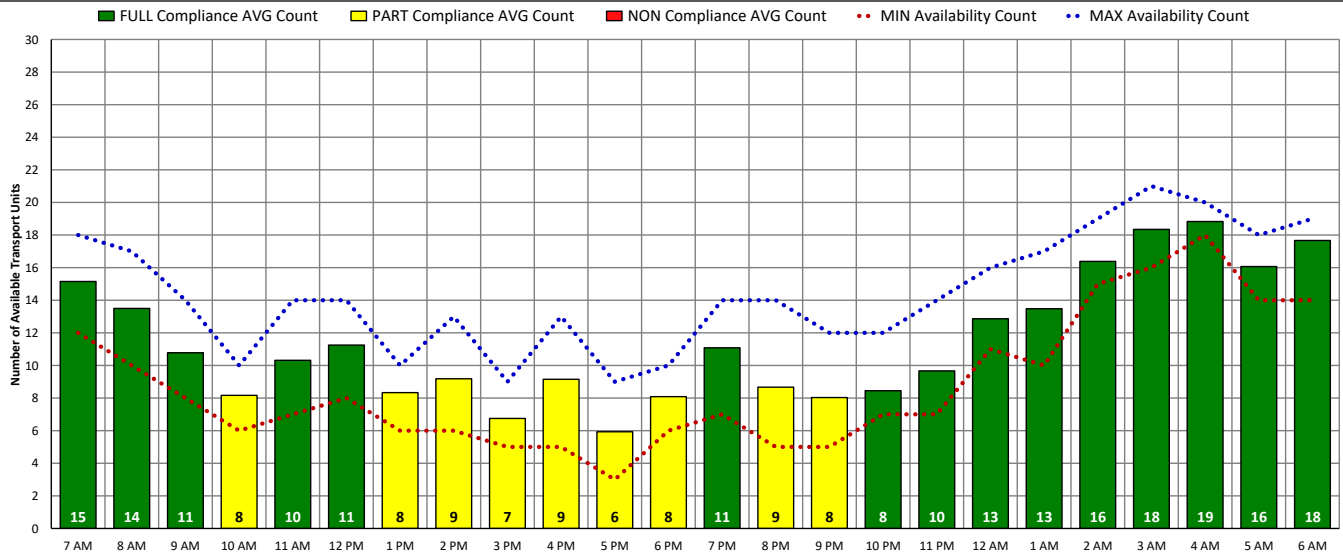


DISTRICT OF COLUMBIA FIRE AND EMS DEPARTMENT

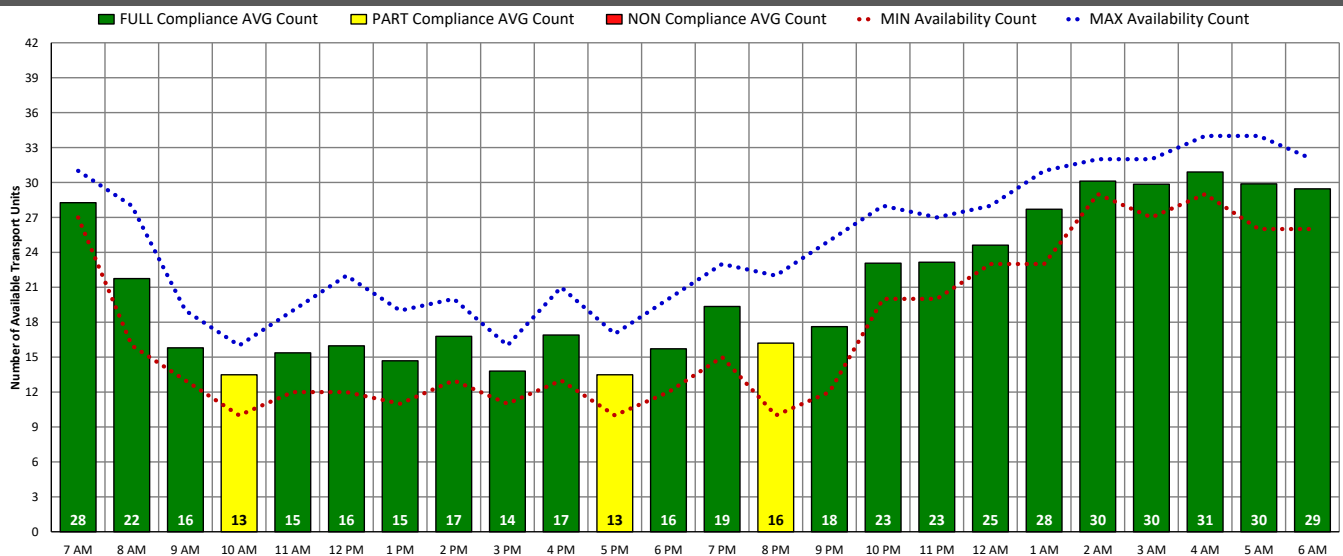
ALS Transport Unit Availability Compliance (MON – 10/03/22)



BLS Transport Unit Availability Compliance (MON – 10/03/22)

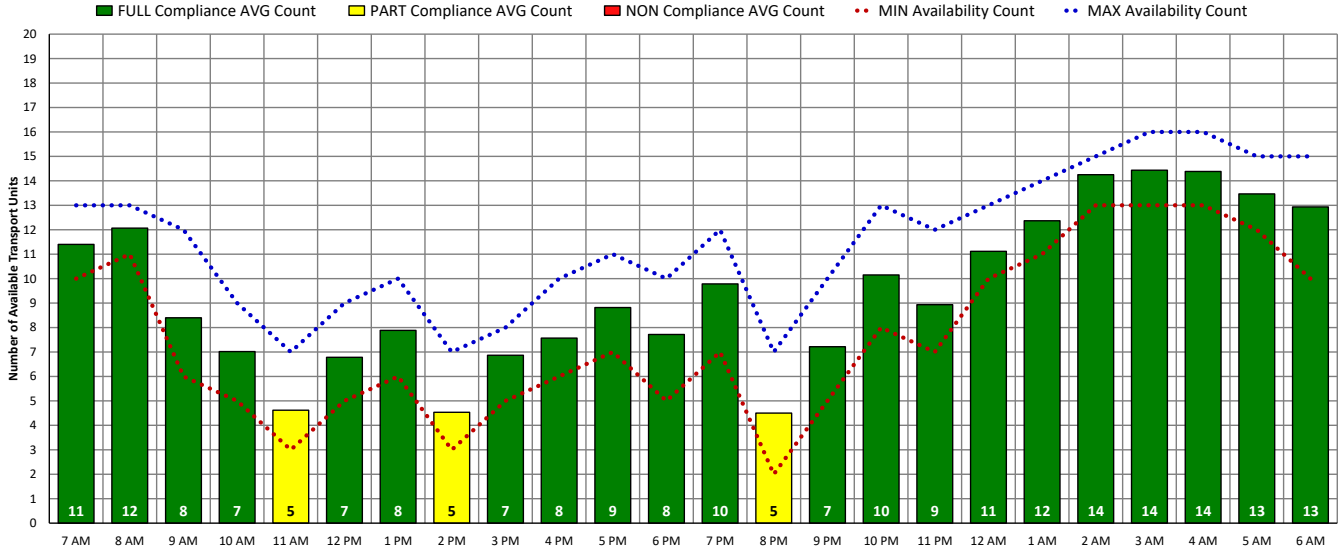


ALL Transport Unit Availability Compliance (MON – 10/03/22)

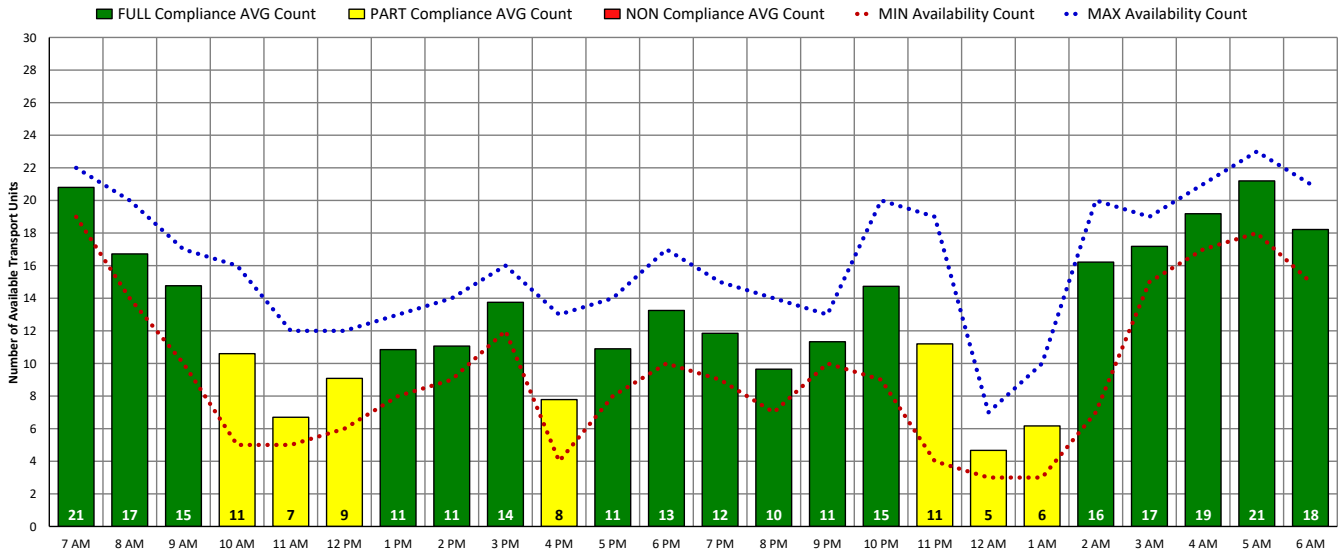


DISTRICT OF COLUMBIA FIRE AND EMS DEPARTMENT

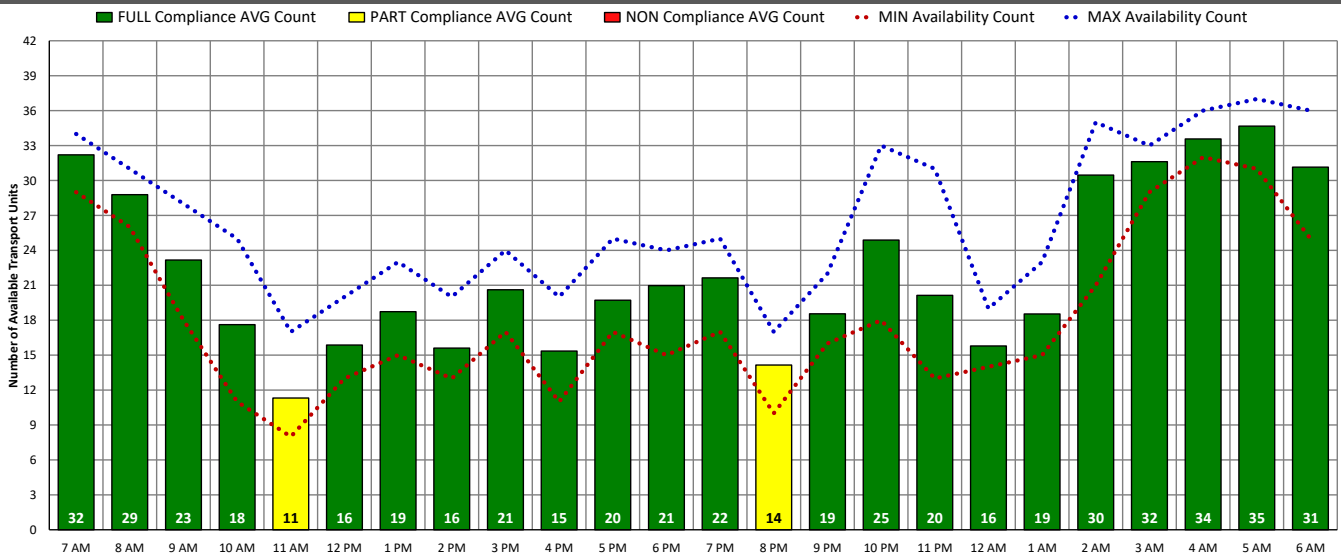
ALS Transport Unit Availability Compliance (TUE – 10/04/22)



BLS Transport Unit Availability Compliance (TUE – 10/04/22)

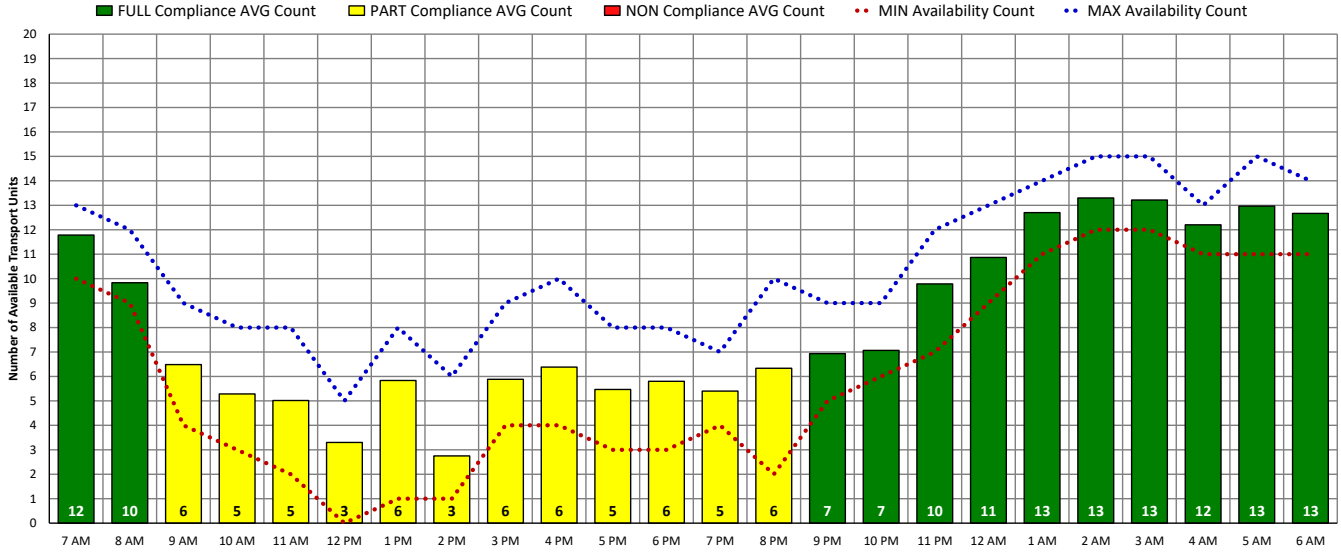


ALL Transport Unit Availability Compliance (TUE – 10/04/22)

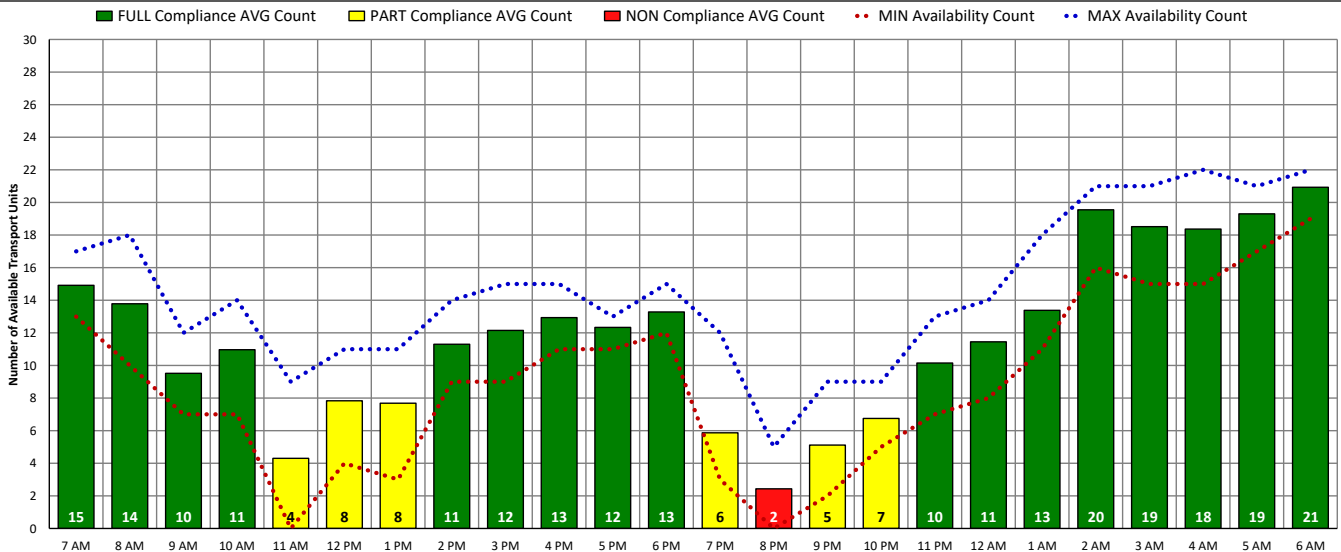


DISTRICT OF COLUMBIA FIRE AND EMS DEPARTMENT

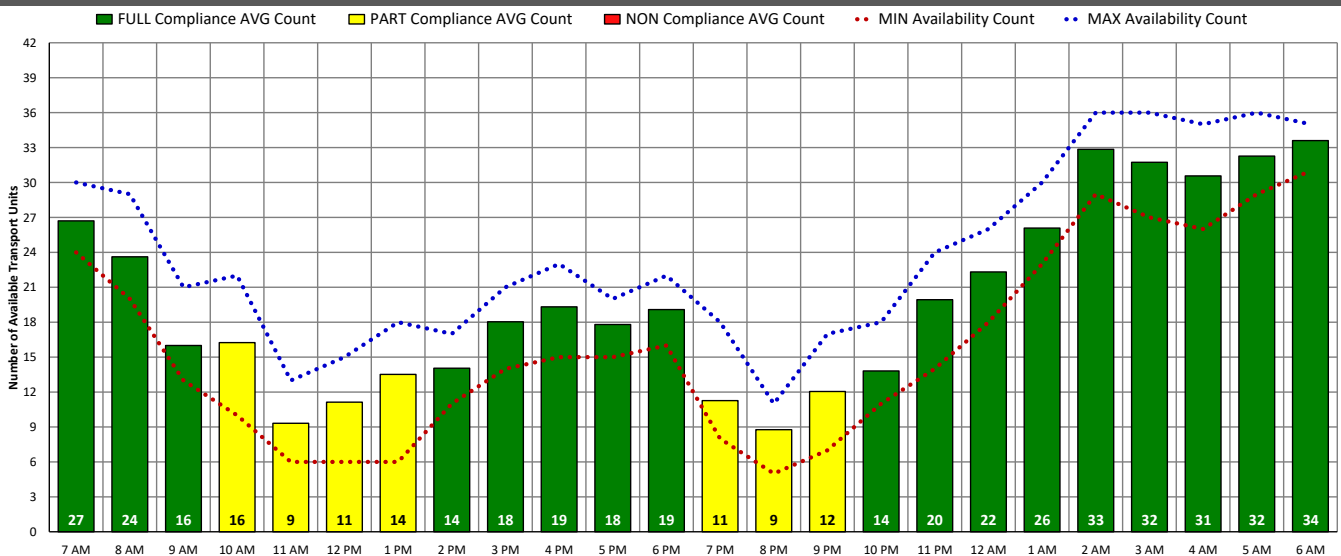
ALS Transport Unit Availability Compliance (WED – 10/05/22)



BLS Transport Unit Availability Compliance (WED – 10/05/22)

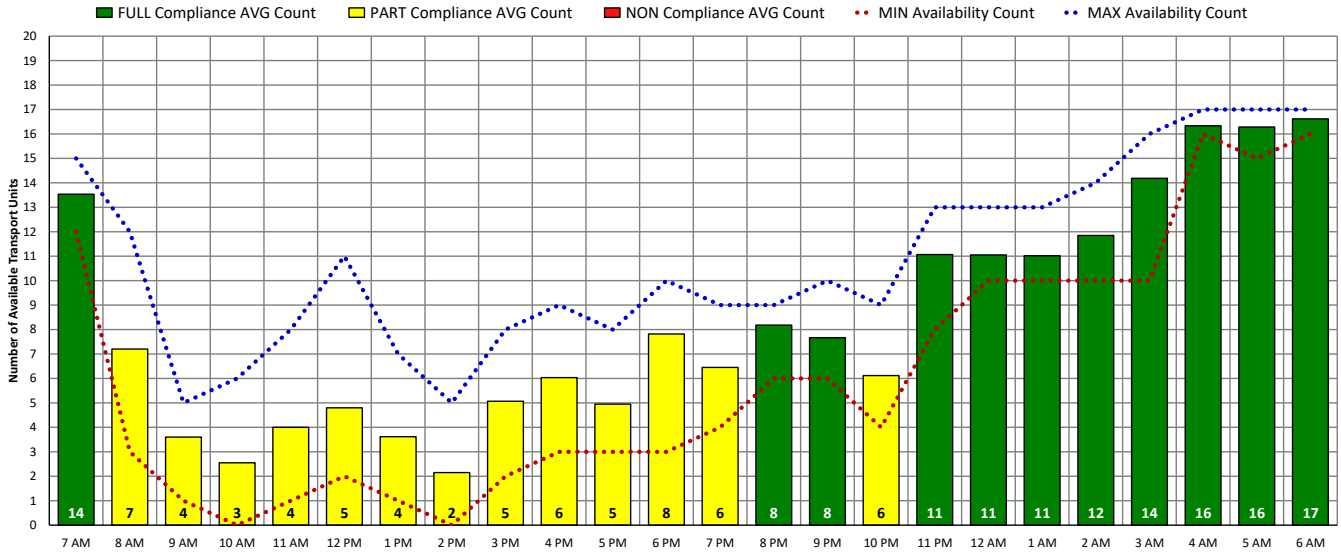


ALL Transport Unit Availability Compliance (WED – 10/05/22)

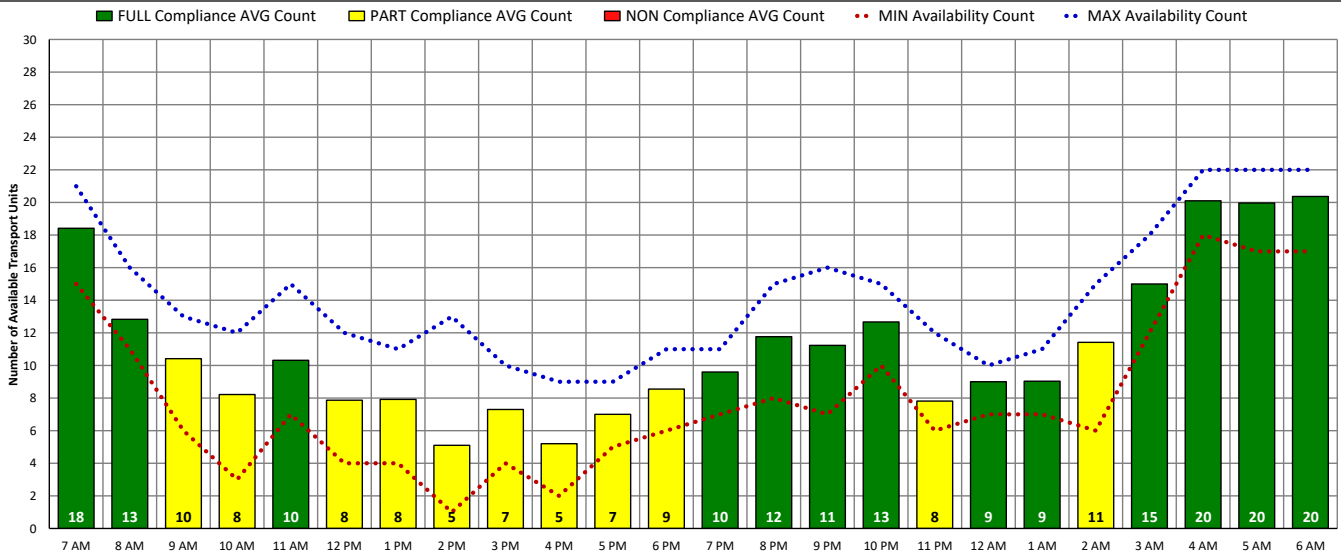


DISTRICT OF COLUMBIA FIRE AND EMS DEPARTMENT

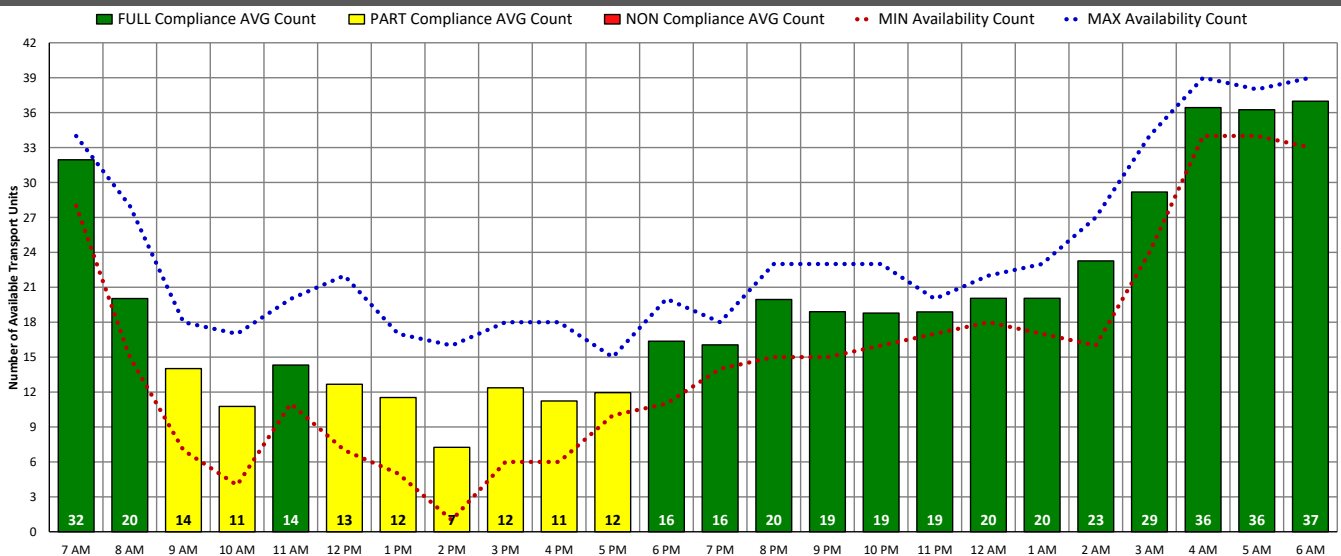
ALS Transport Unit Availability Compliance (THU – 10/06/22)



BLS Transport Unit Availability Compliance (THU – 10/06/22)

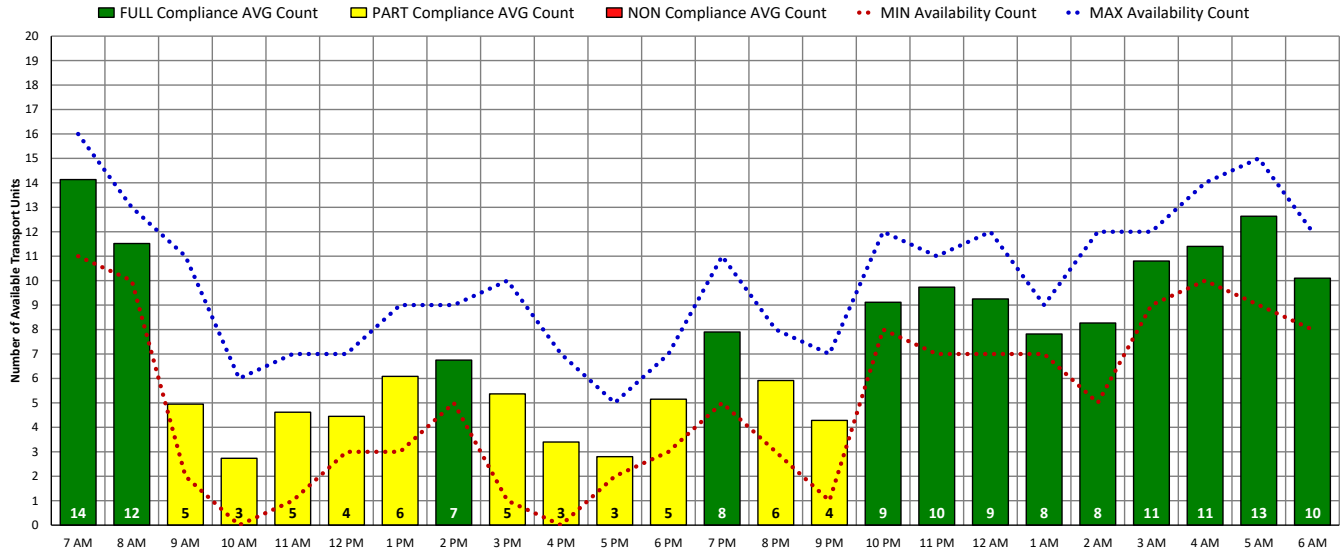


ALL Transport Unit Availability Compliance (THU – 10/06/22)

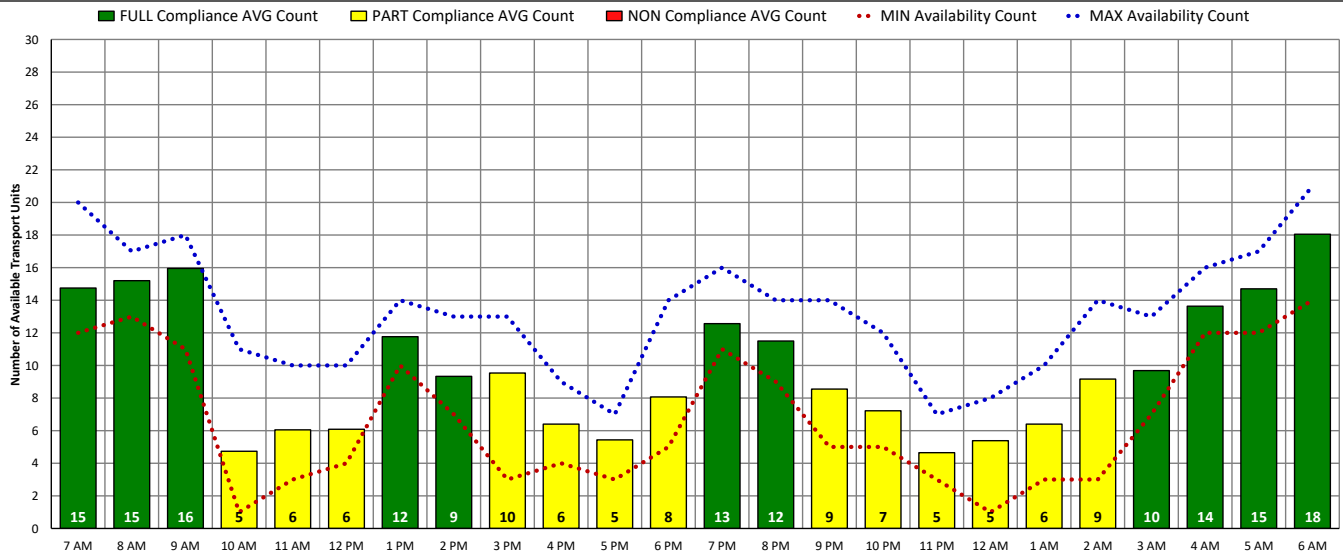


DISTRICT OF COLUMBIA FIRE AND EMS DEPARTMENT

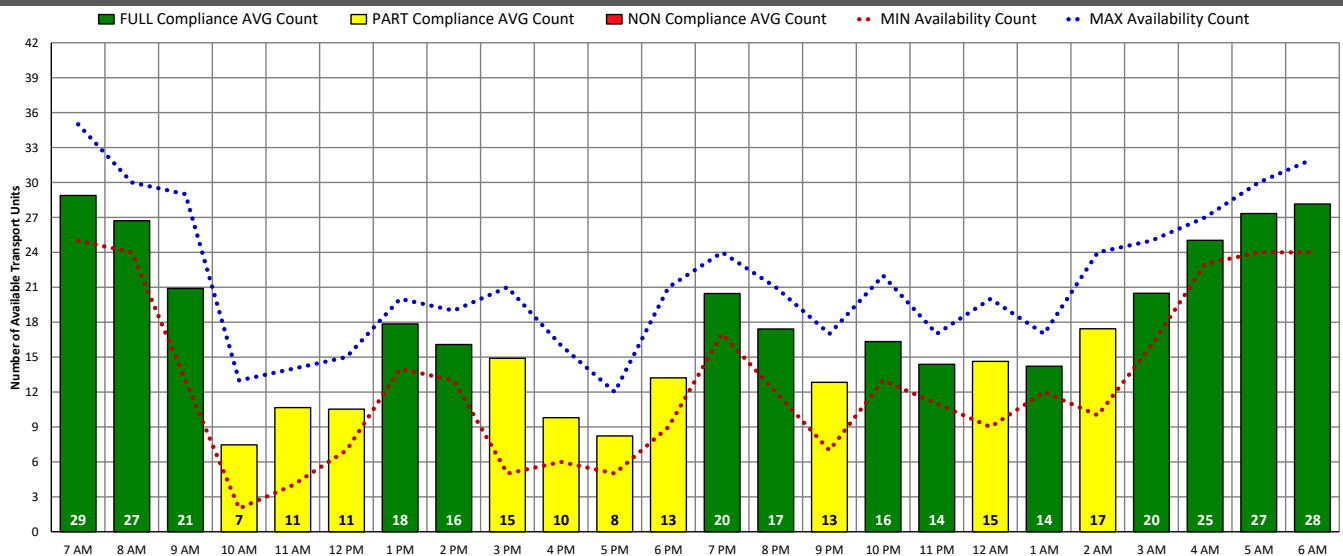
ALS Transport Unit Availability Compliance (FRI – 10/07/22)



BLS Transport Unit Availability Compliance (FRI – 10/07/22)

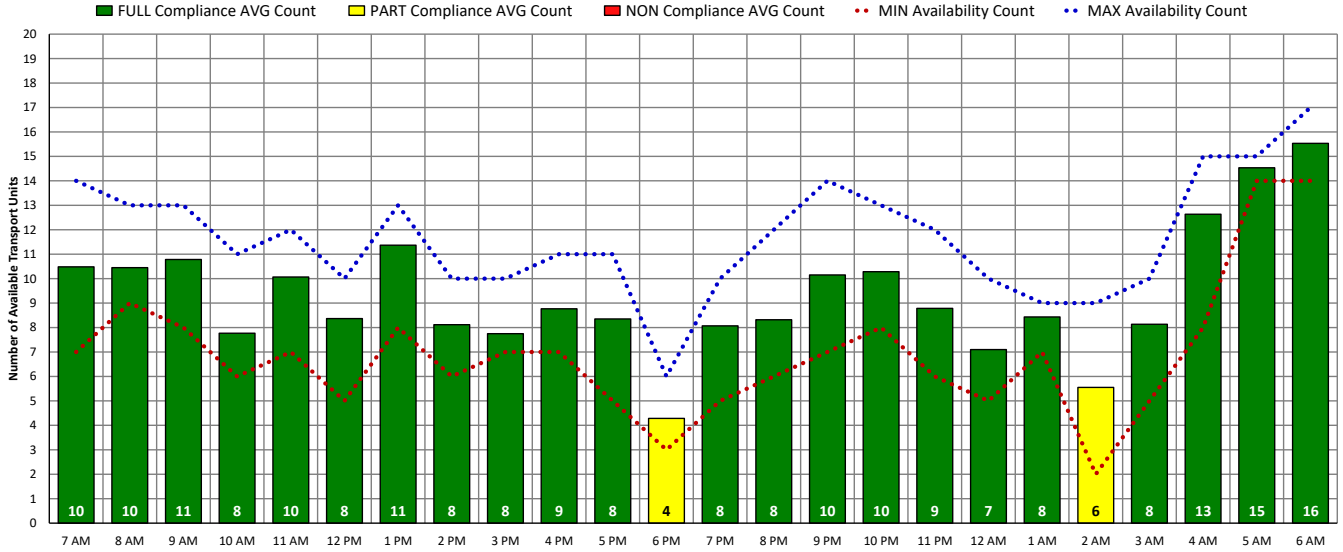


ALL Transport Unit Availability Compliance (FRI – 10/07/22)

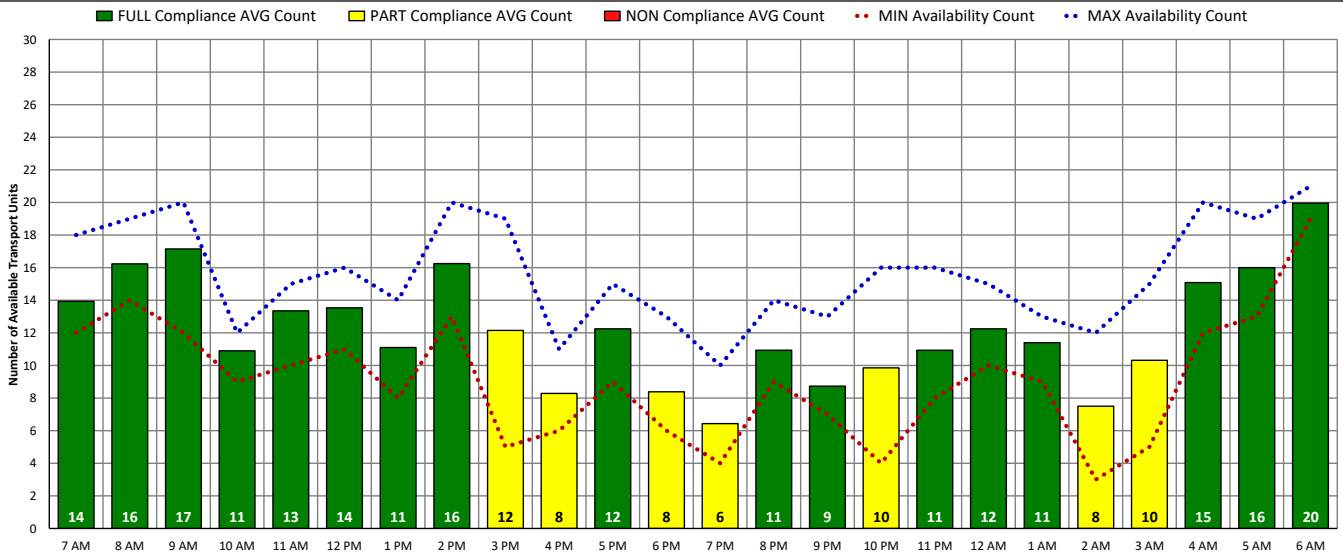


DISTRICT OF COLUMBIA FIRE AND EMS DEPARTMENT

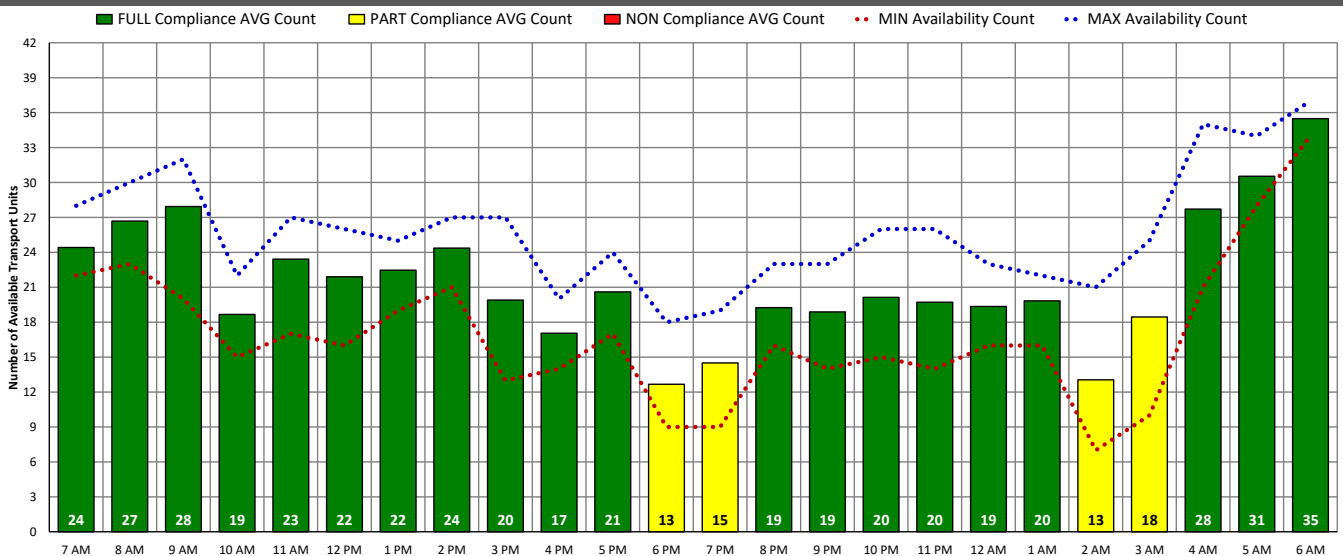
ALS Transport Unit Availability Compliance (SAT – 10/08/22)



BLS Transport Unit Availability Compliance (SAT – 10/08/22)

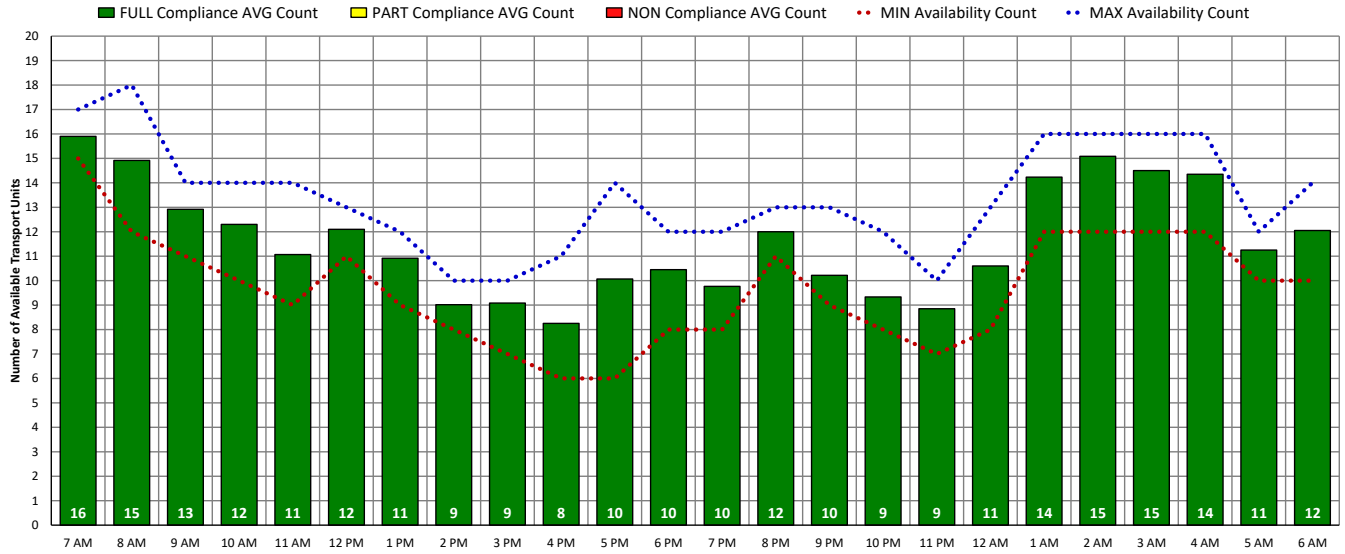


ALL Transport Unit Availability Compliance (SAT – 10/08/22)

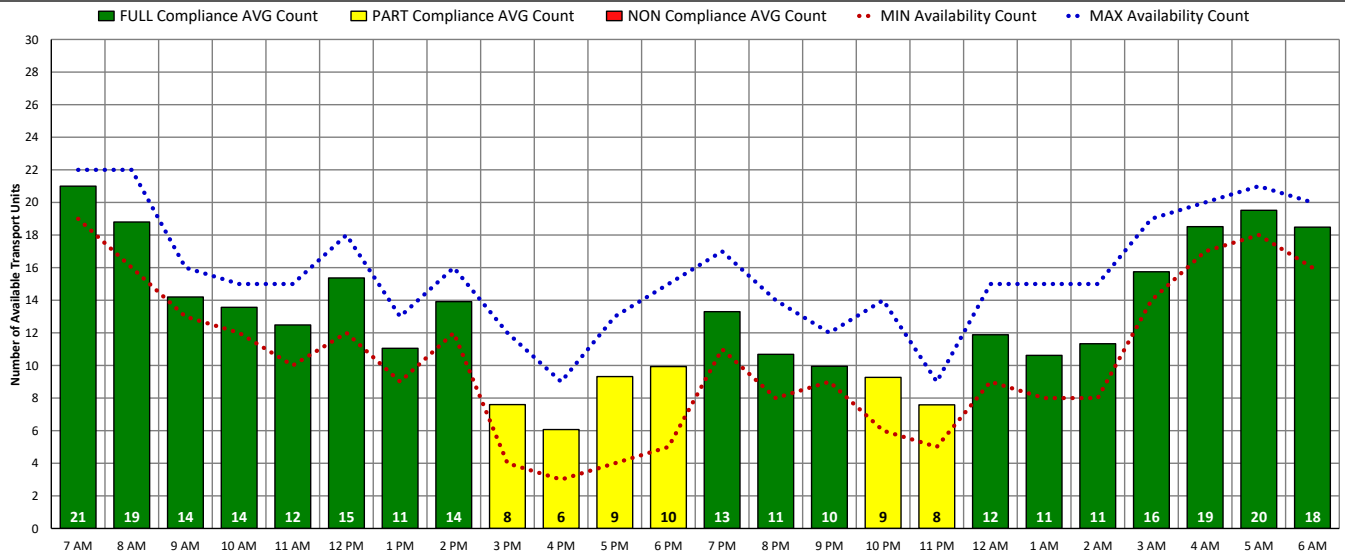


DISTRICT OF COLUMBIA FIRE AND EMS DEPARTMENT

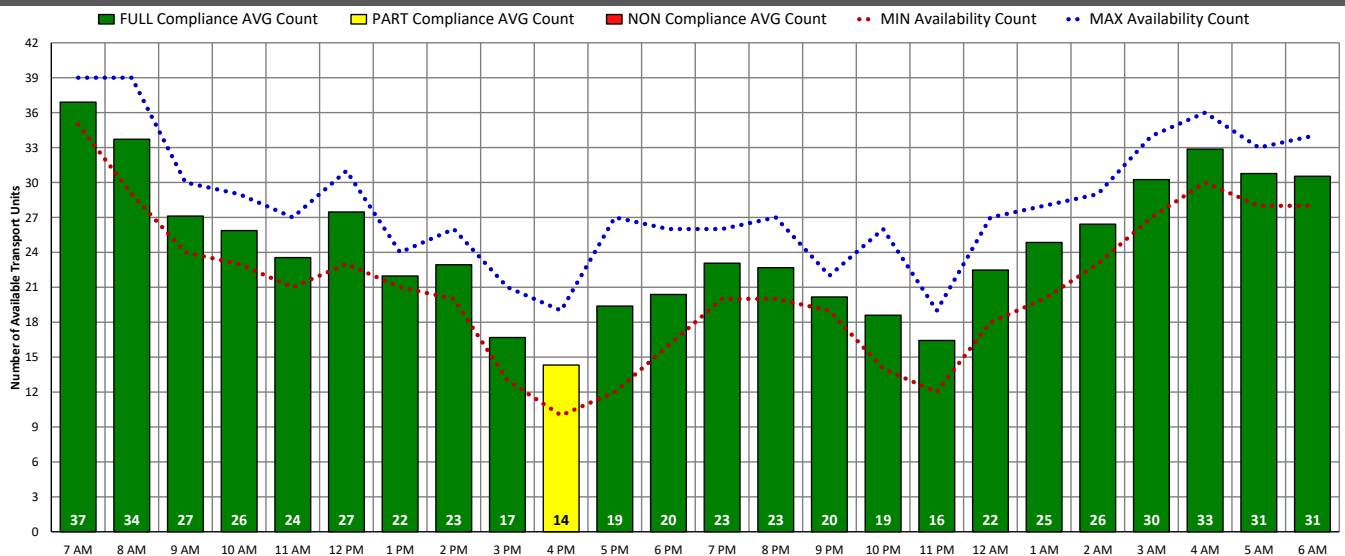
ALS Transport Unit Availability Compliance (SUN – 10/09/22)



BLS Transport Unit Availability Compliance (SUN – 10/09/22)

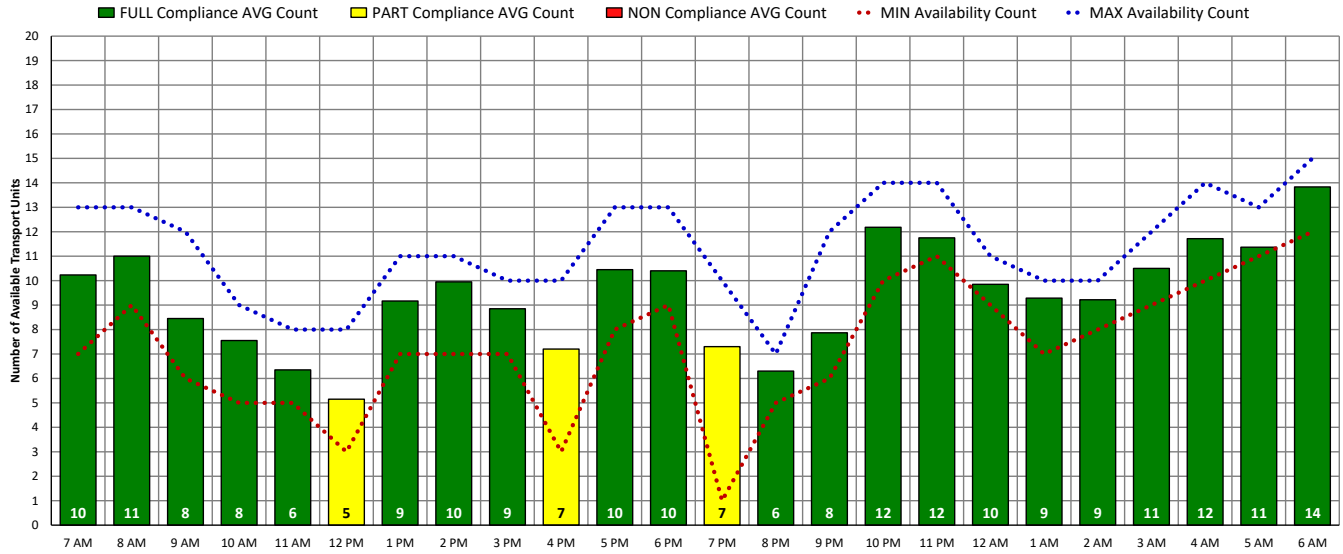


ALL Transport Unit Availability Compliance (SUN – 10/09/22)

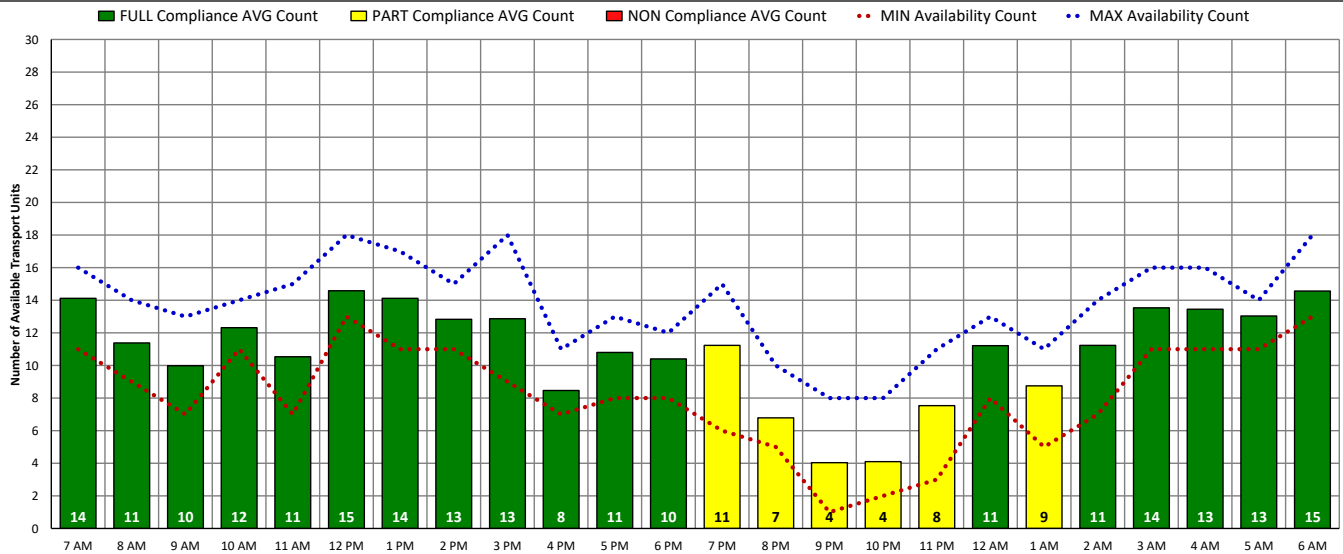


DISTRICT OF COLUMBIA FIRE AND EMS DEPARTMENT

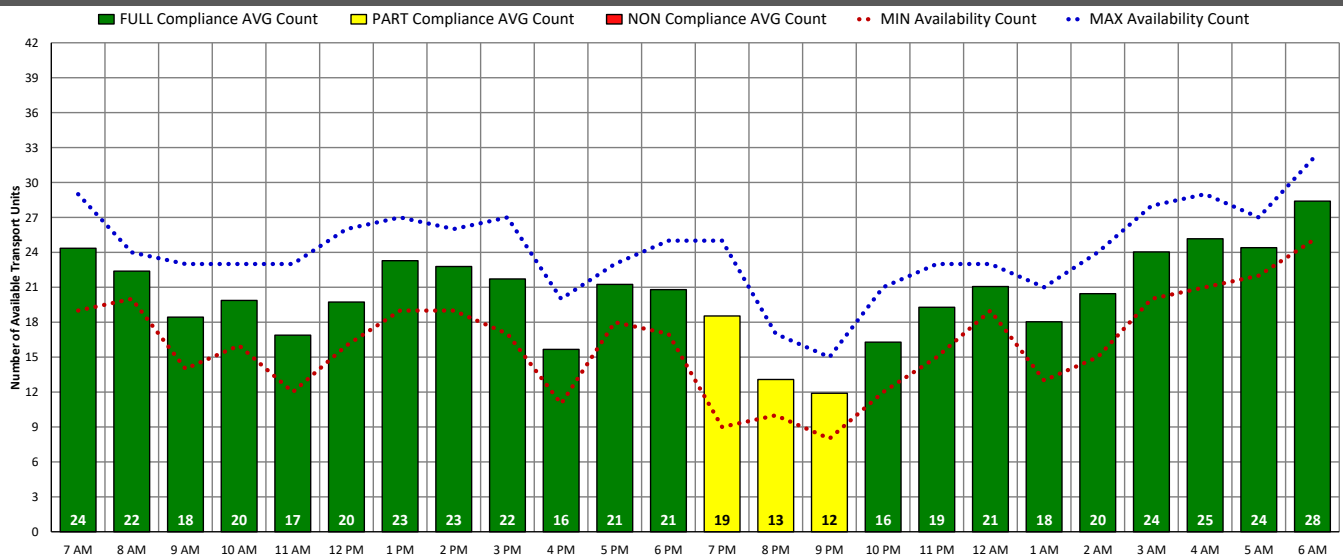
ALS Transport Unit Availability Compliance (MON – 10/10/22)



BLS Transport Unit Availability Compliance (MON – 10/10/22)

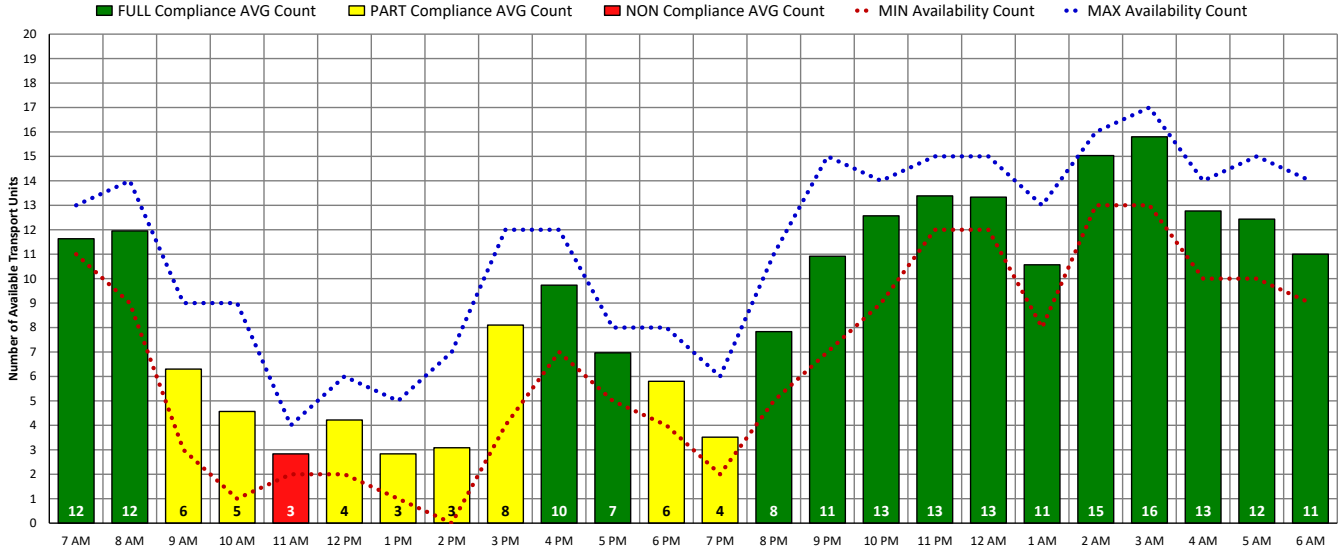


ALL Transport Unit Availability Compliance (MON – 10/10/22)

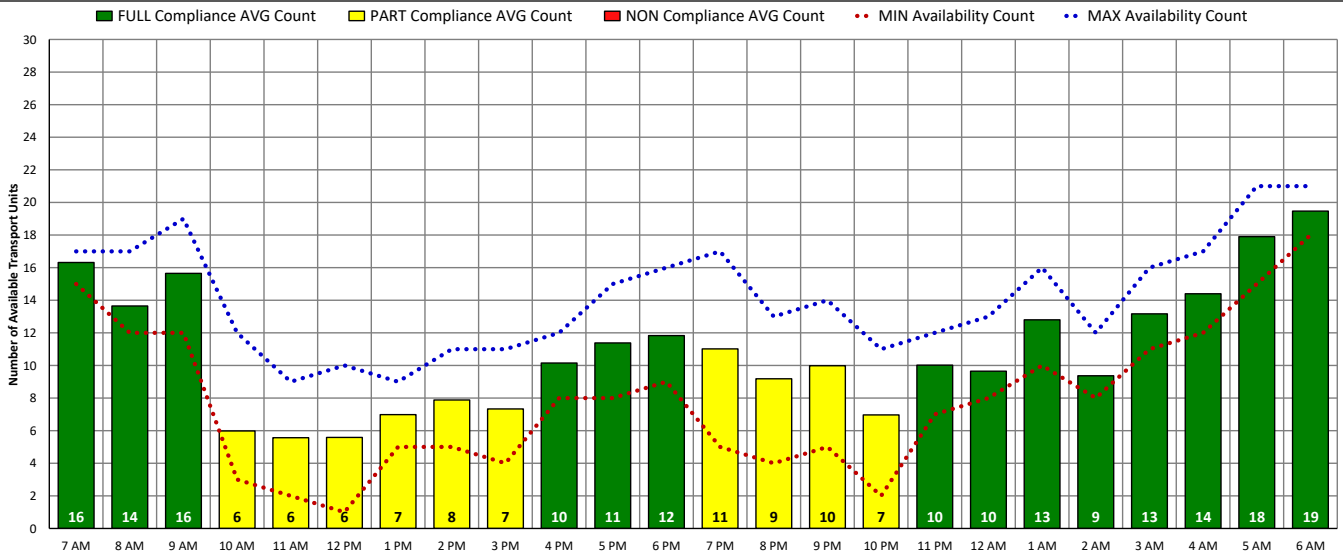


DISTRICT OF COLUMBIA FIRE AND EMS DEPARTMENT

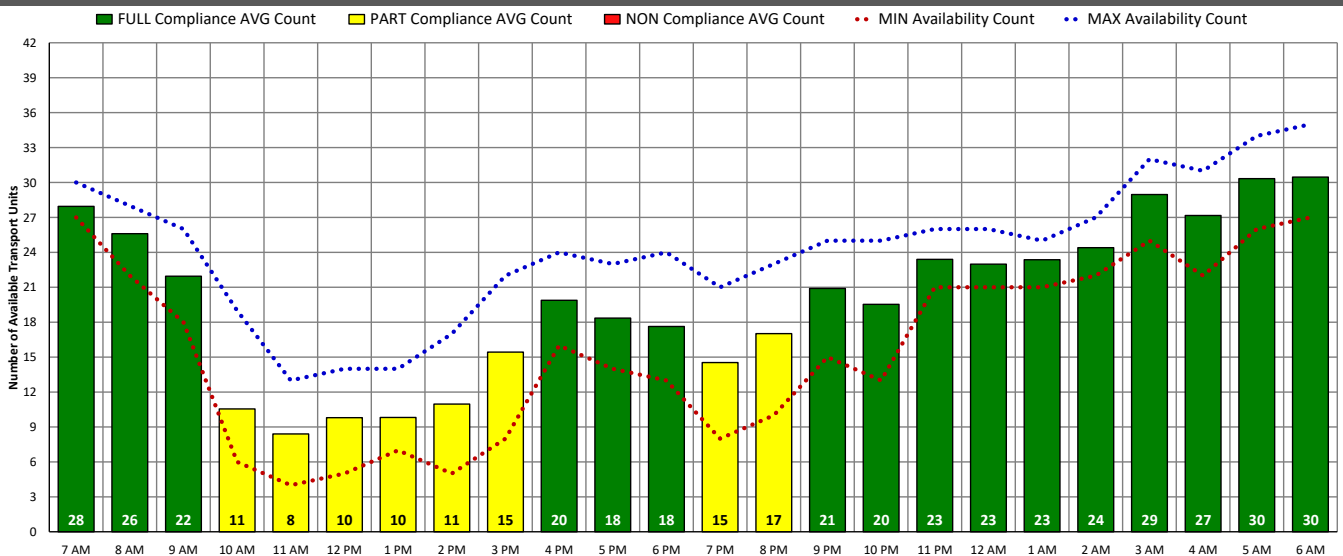
ALS Transport Unit Availability Compliance (TUE – 10/11/22)



BLS Transport Unit Availability Compliance (TUE – 10/11/22)

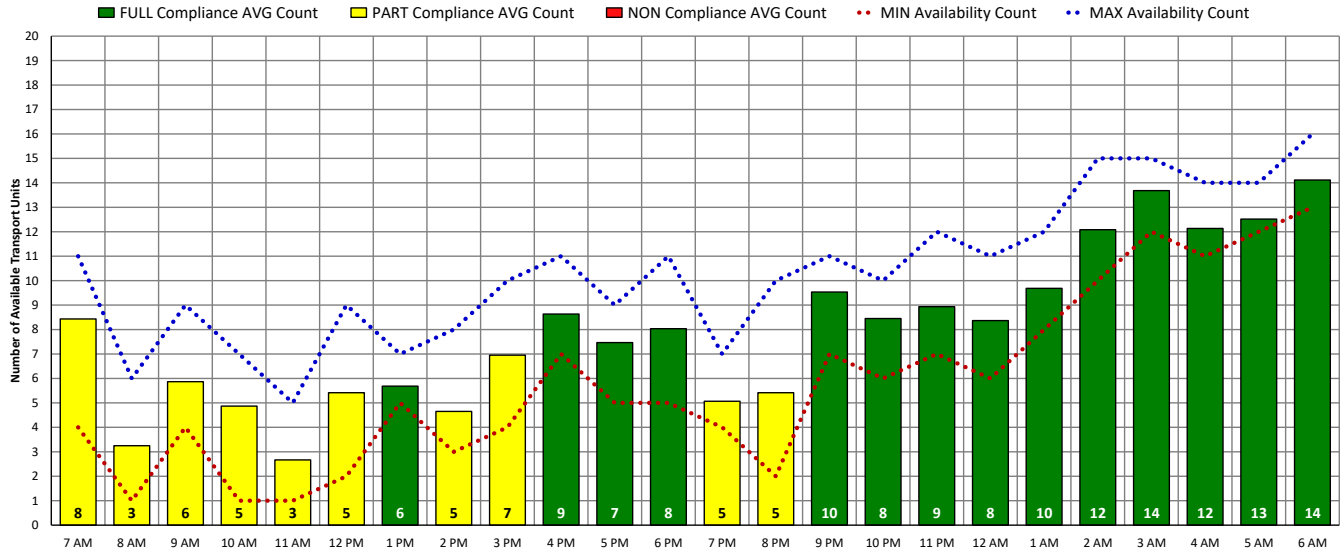


ALL Transport Unit Availability Compliance (TUE – 10/11/22)

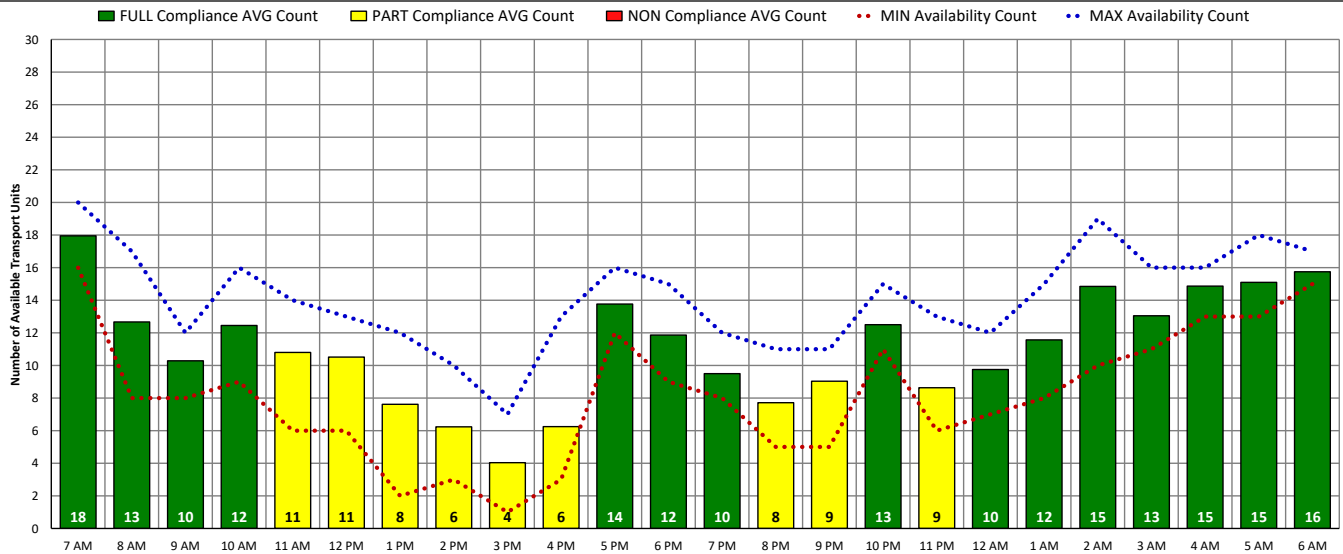


DISTRICT OF COLUMBIA FIRE AND EMS DEPARTMENT

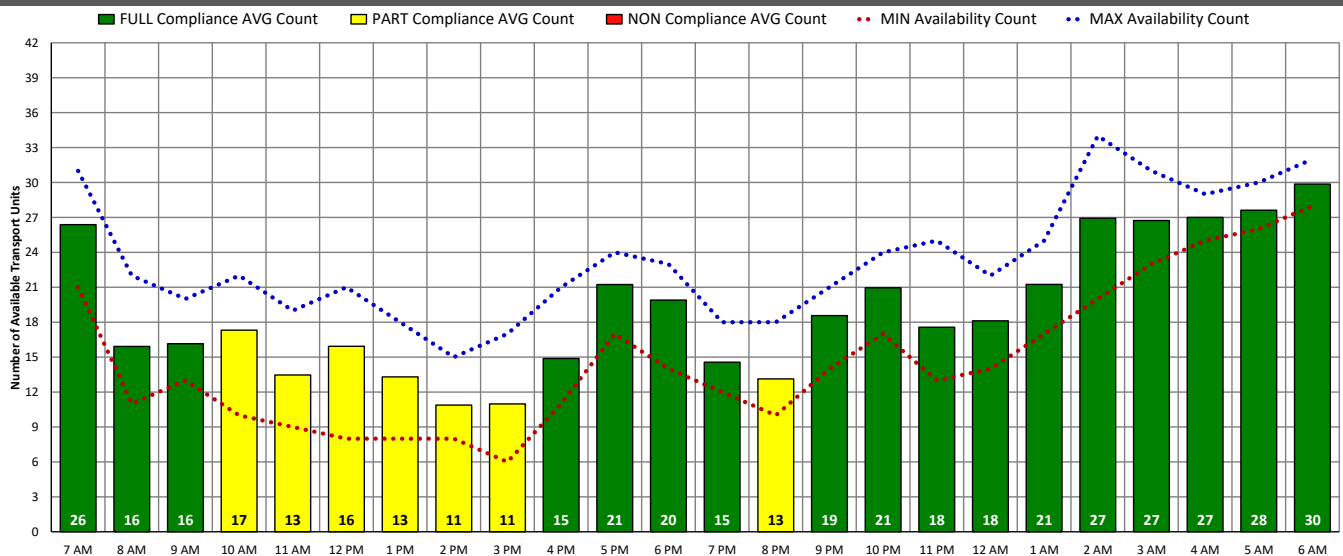
ALS Transport Unit Availability Compliance (WED – 10/12/22)



BLS Transport Unit Availability Compliance (WED – 10/12/22)

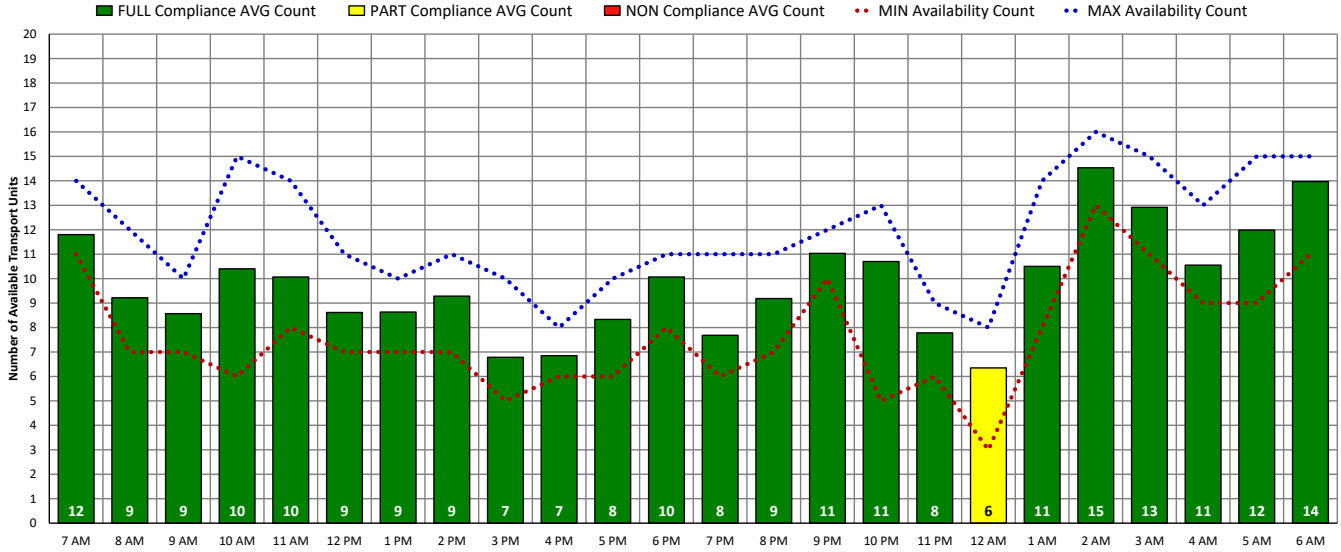


ALL Transport Unit Availability Compliance (WED – 10/12/22)

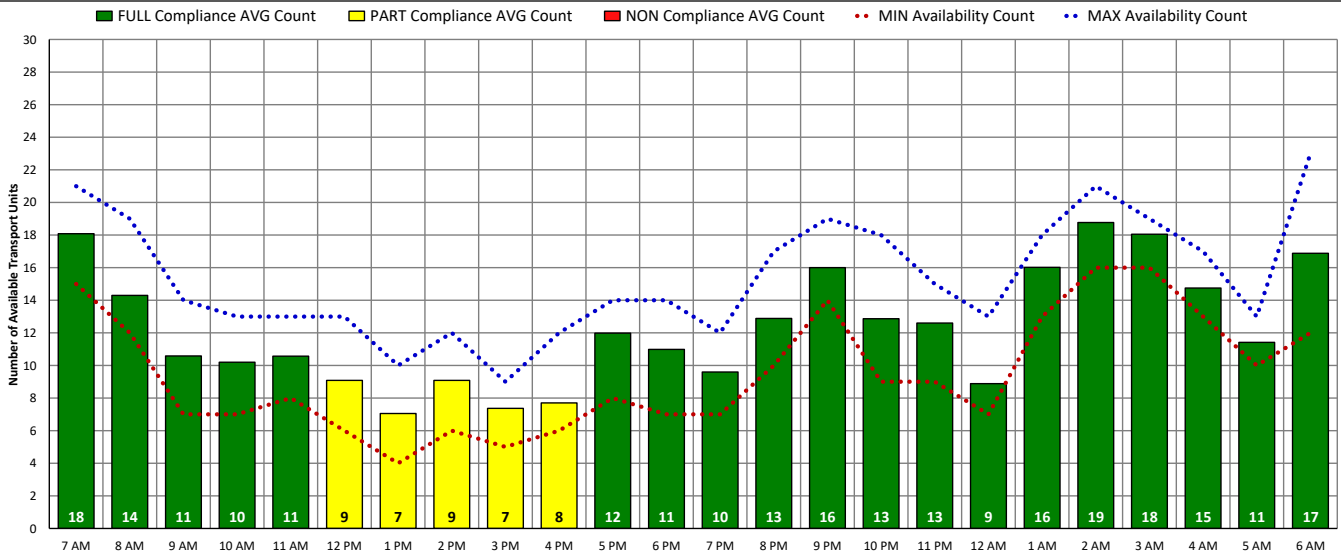


DISTRICT OF COLUMBIA FIRE AND EMS DEPARTMENT

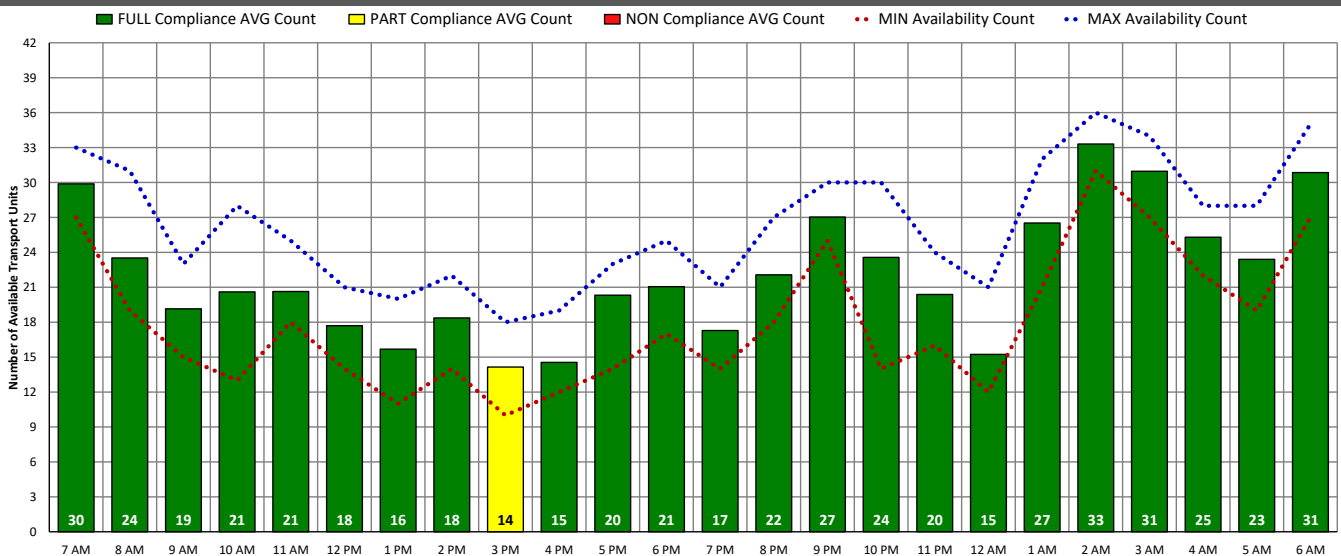
ALS Transport Unit Availability Compliance (THU – 10/13/22)



BLS Transport Unit Availability Compliance (THU – 10/13/22)

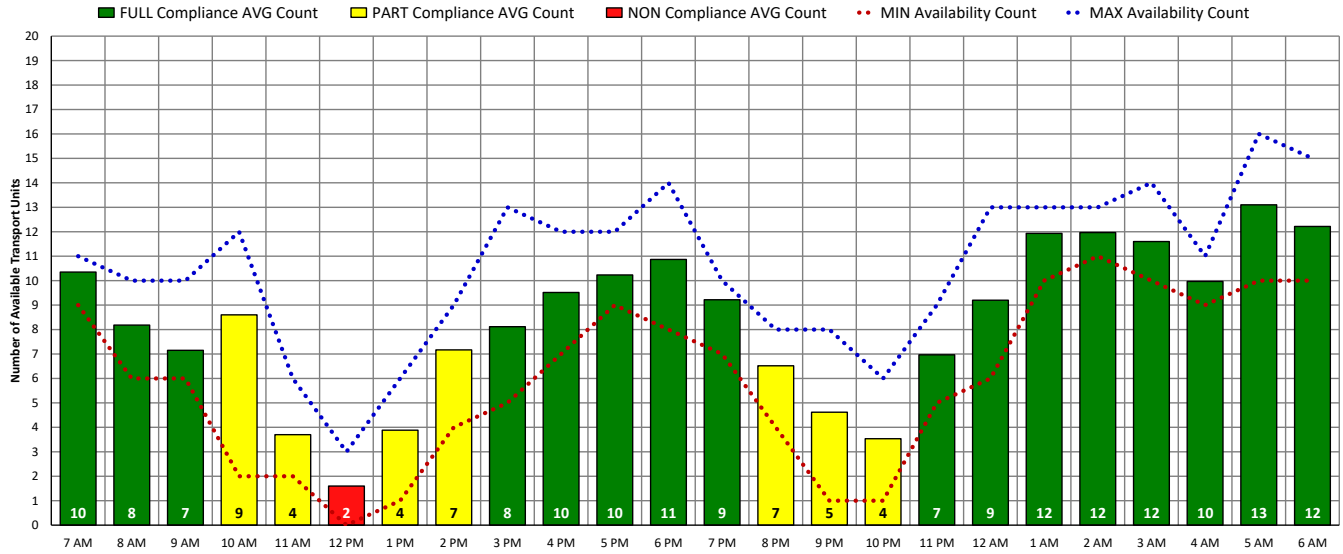


ALL Transport Unit Availability Compliance (THU – 10/13/22)

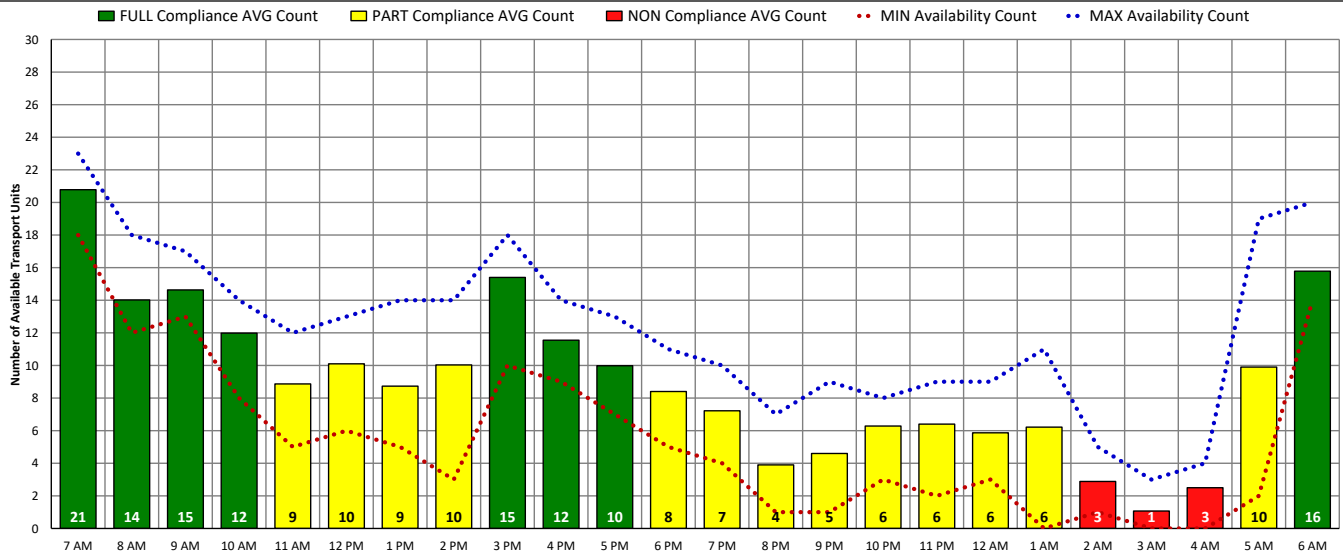


DISTRICT OF COLUMBIA FIRE AND EMS DEPARTMENT

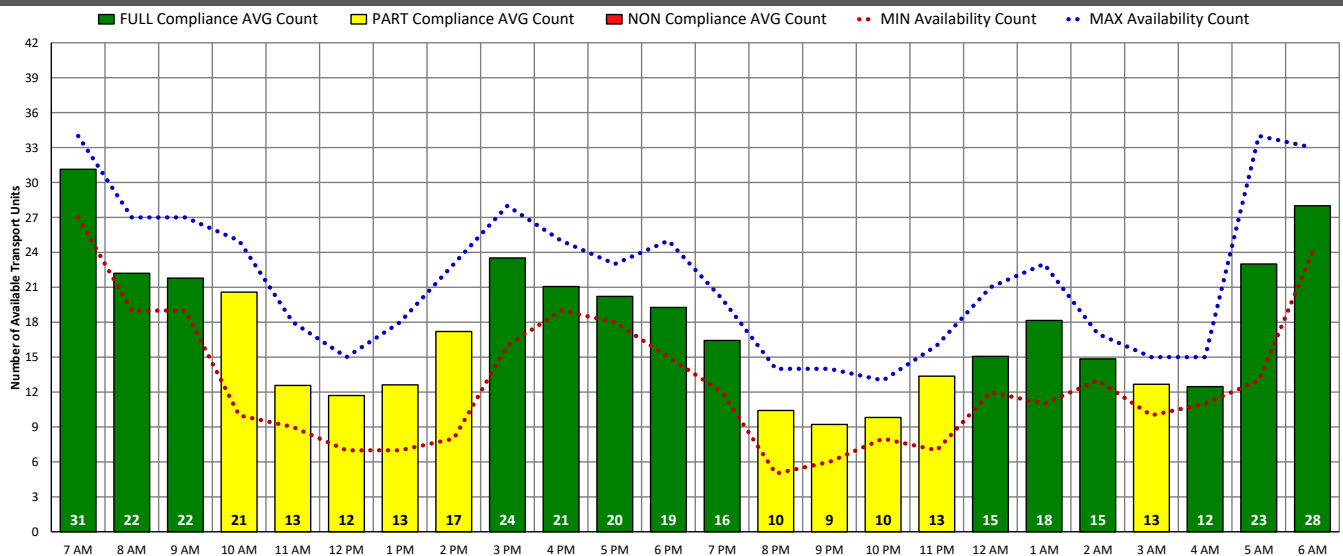
ALS Transport Unit Availability Compliance (FRI – 10/14/22)



BLS Transport Unit Availability Compliance (FRI – 10/14/22)

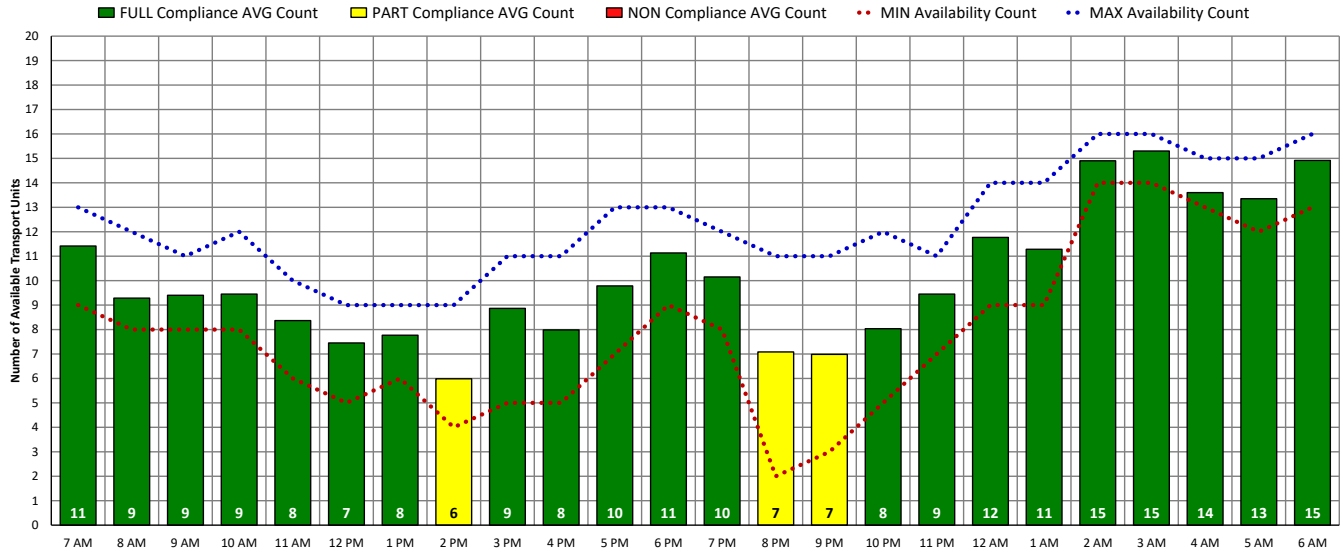


ALL Transport Unit Availability Compliance (FRI – 10/14/22)

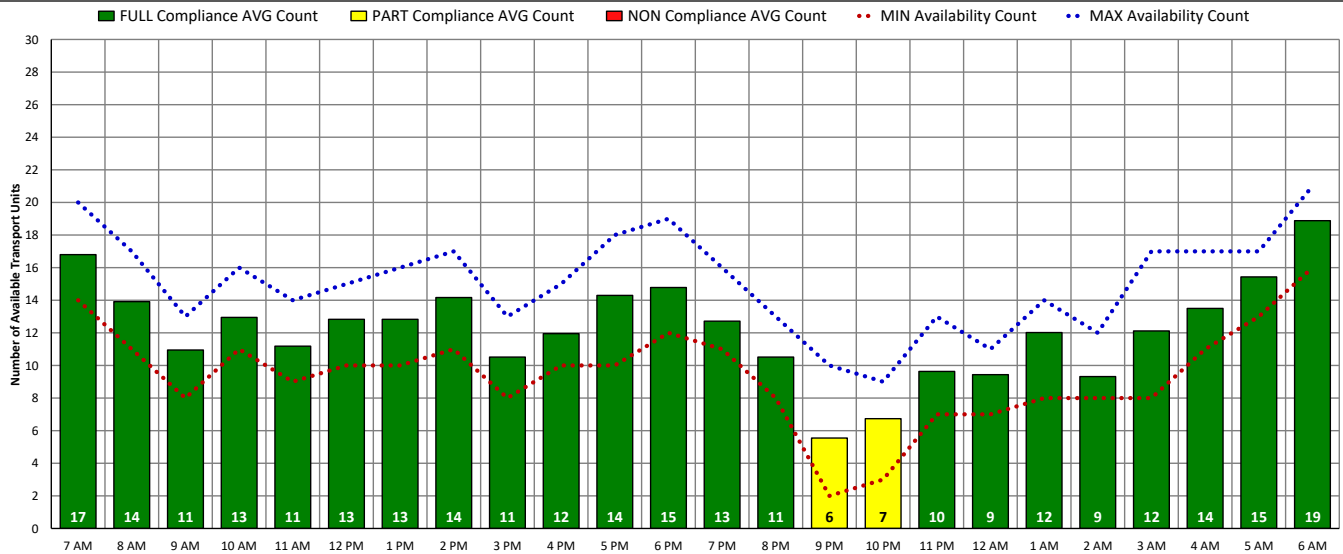


DISTRICT OF COLUMBIA FIRE AND EMS DEPARTMENT

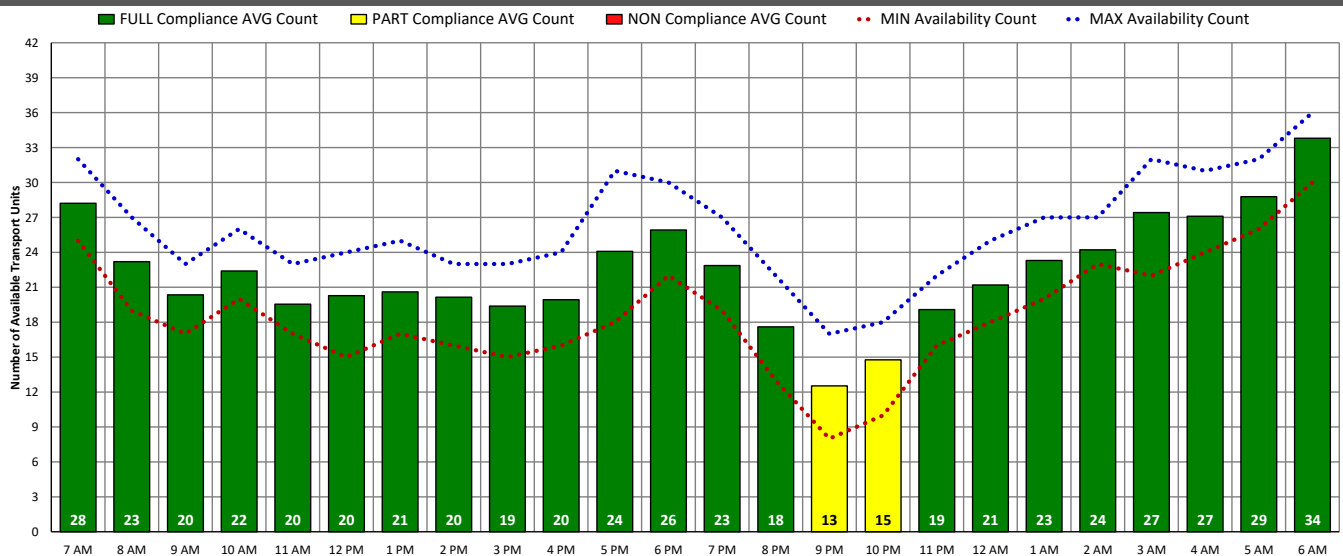
ALS Transport Unit Availability Compliance (SAT – 10/15/22)



BLS Transport Unit Availability Compliance (SAT – 10/15/22)

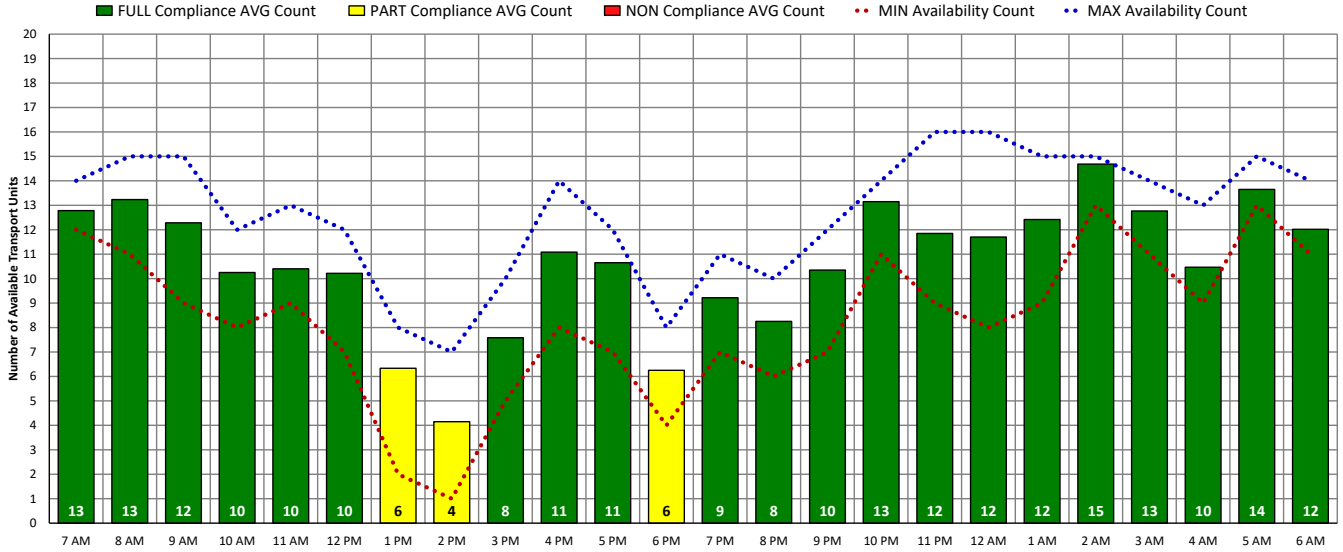


ALL Transport Unit Availability Compliance (SAT – 10/15/22)

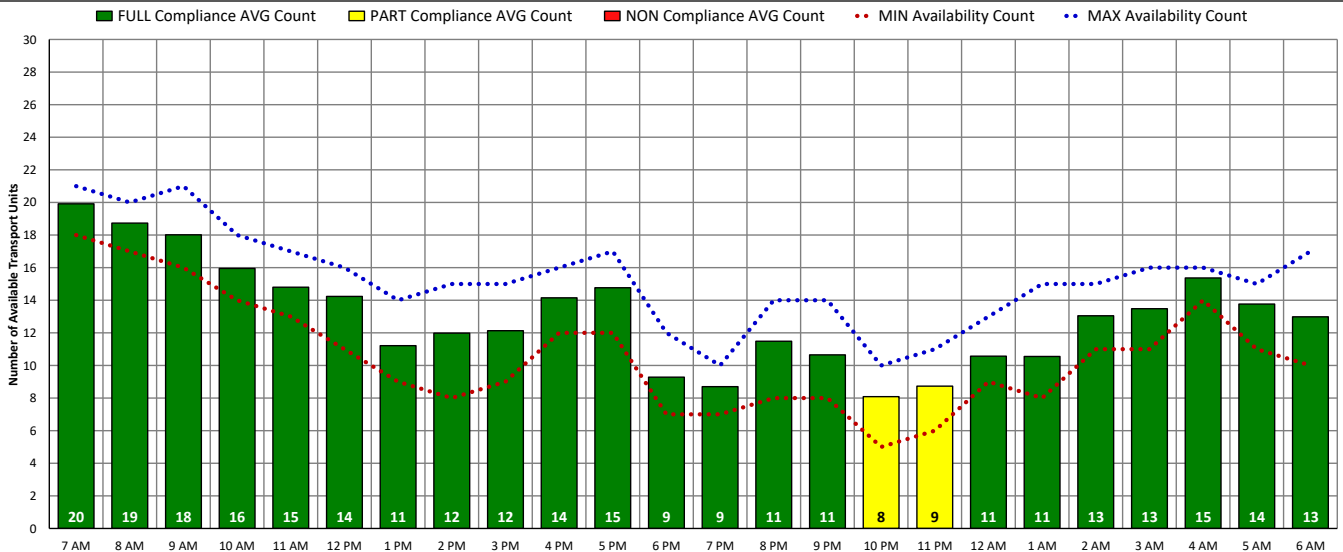


DISTRICT OF COLUMBIA FIRE AND EMS DEPARTMENT

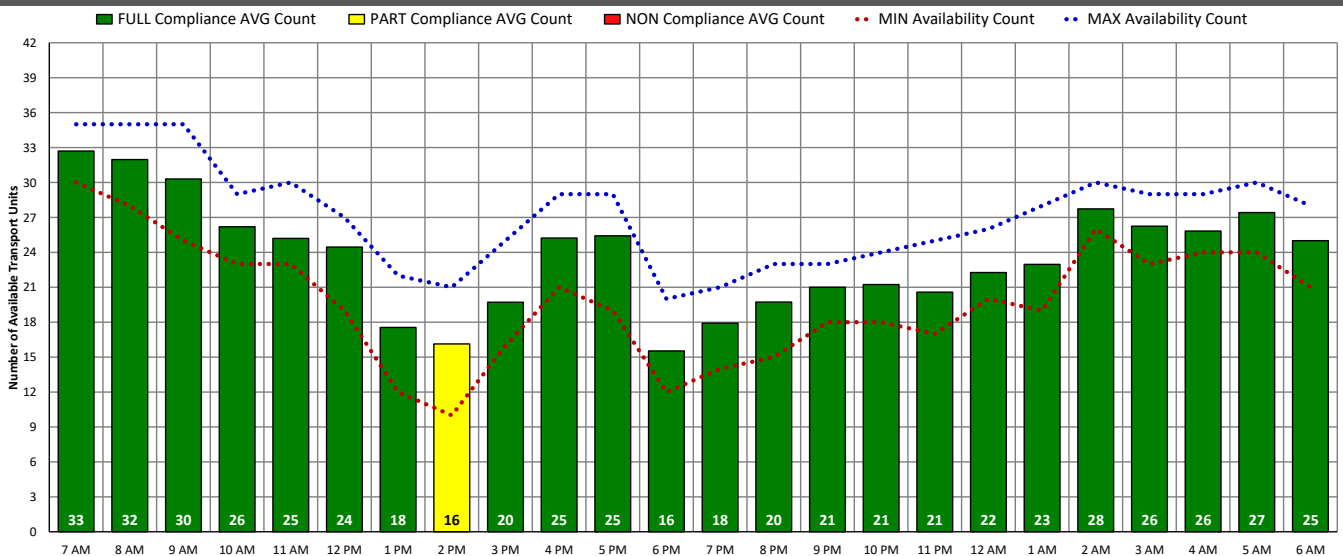
ALS Transport Unit Availability Compliance (SUN – 10/16/22)



BLS Transport Unit Availability Compliance (SUN – 10/16/22)

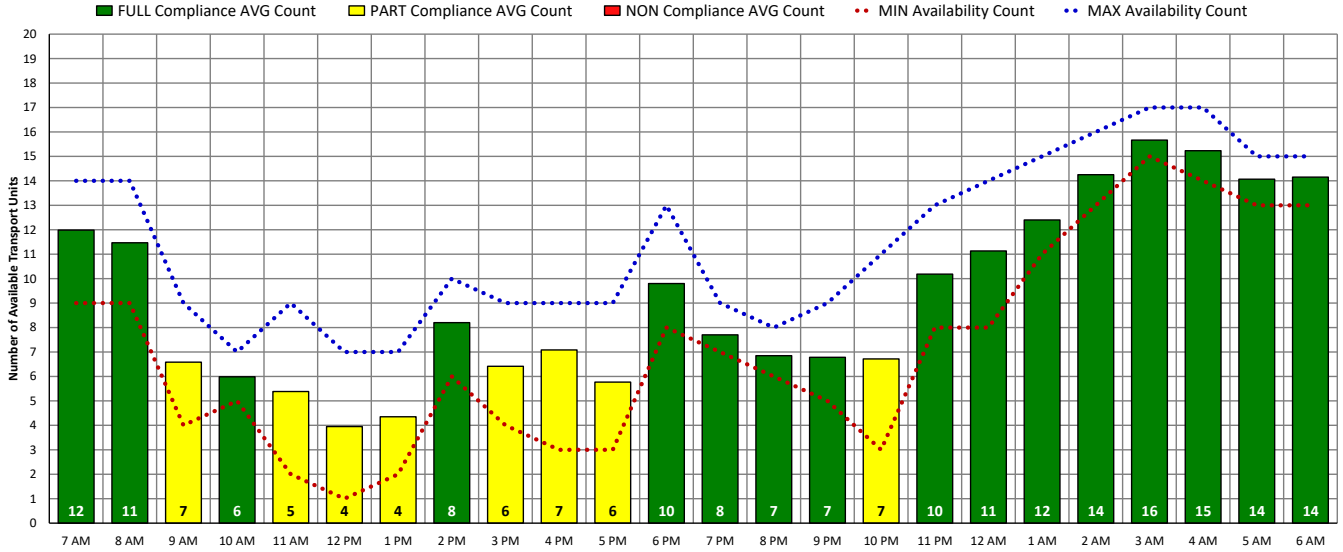


ALL Transport Unit Availability Compliance (SUN – 10/16/22)

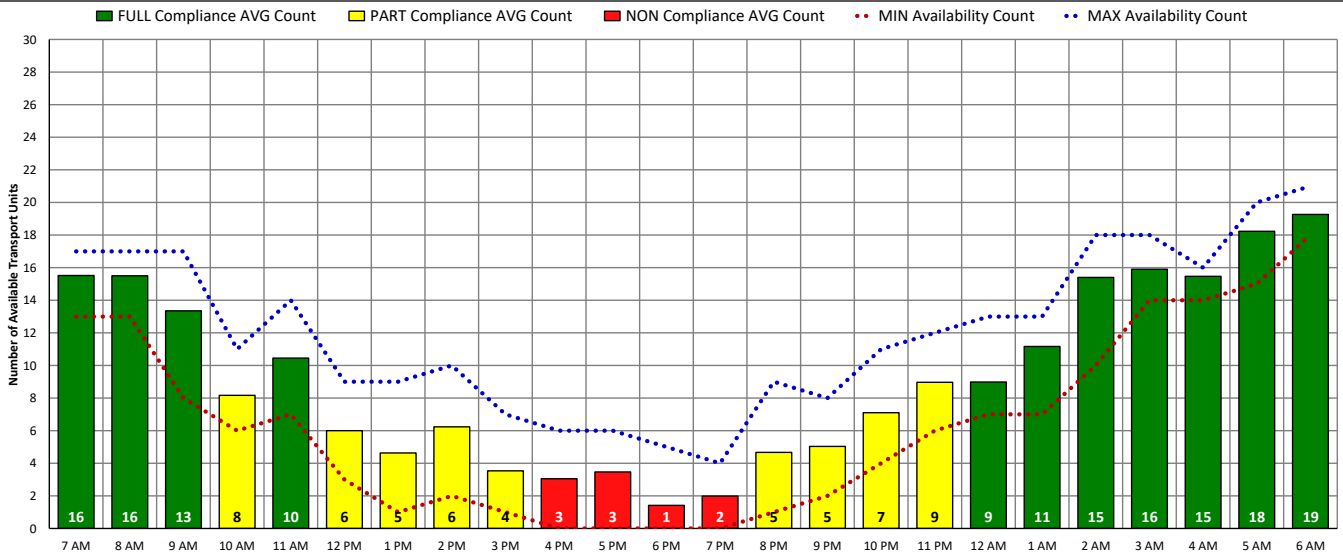


DISTRICT OF COLUMBIA FIRE AND EMS DEPARTMENT

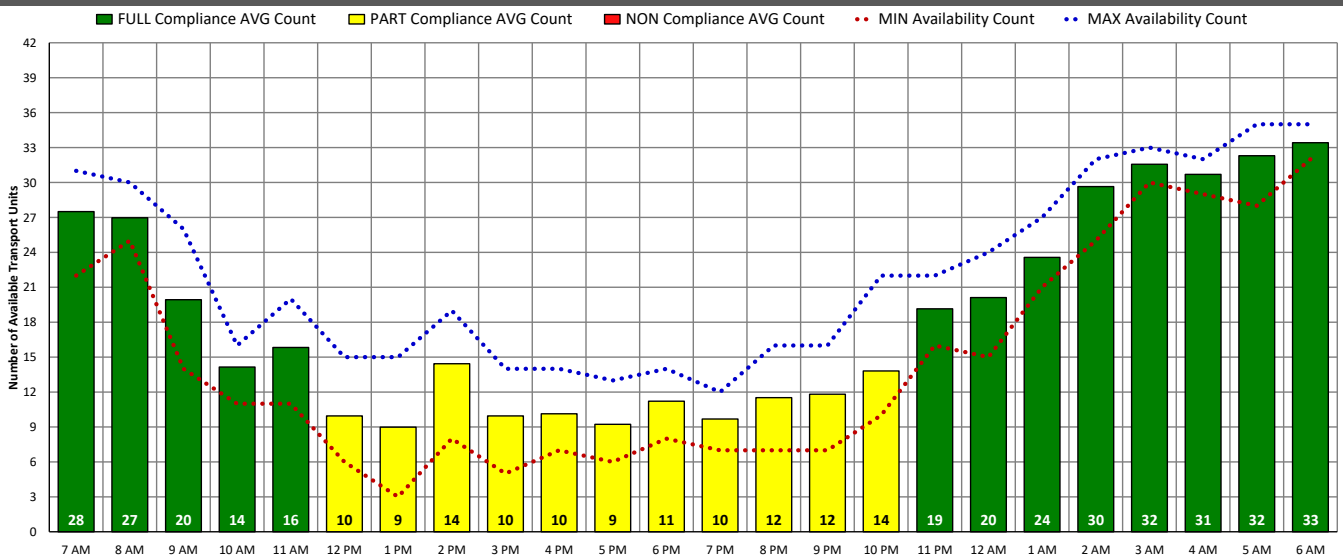
ALS Transport Unit Availability Compliance (MON – 10/17/22)



BLS Transport Unit Availability Compliance (MON – 10/17/22)

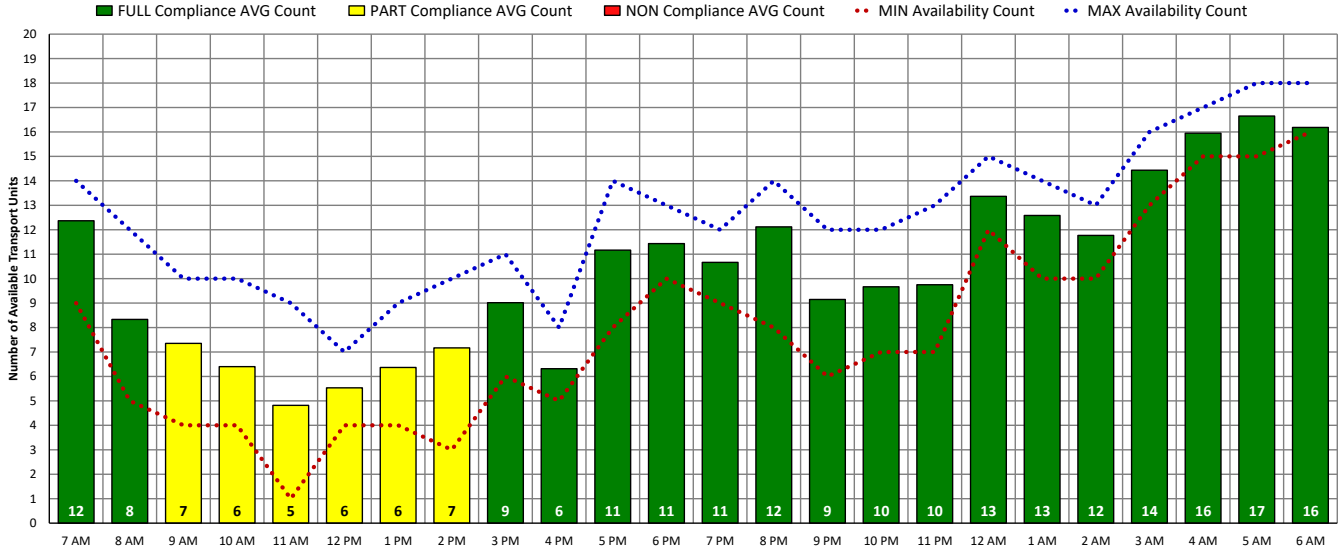


ALL Transport Unit Availability Compliance (MON – 10/17/22)

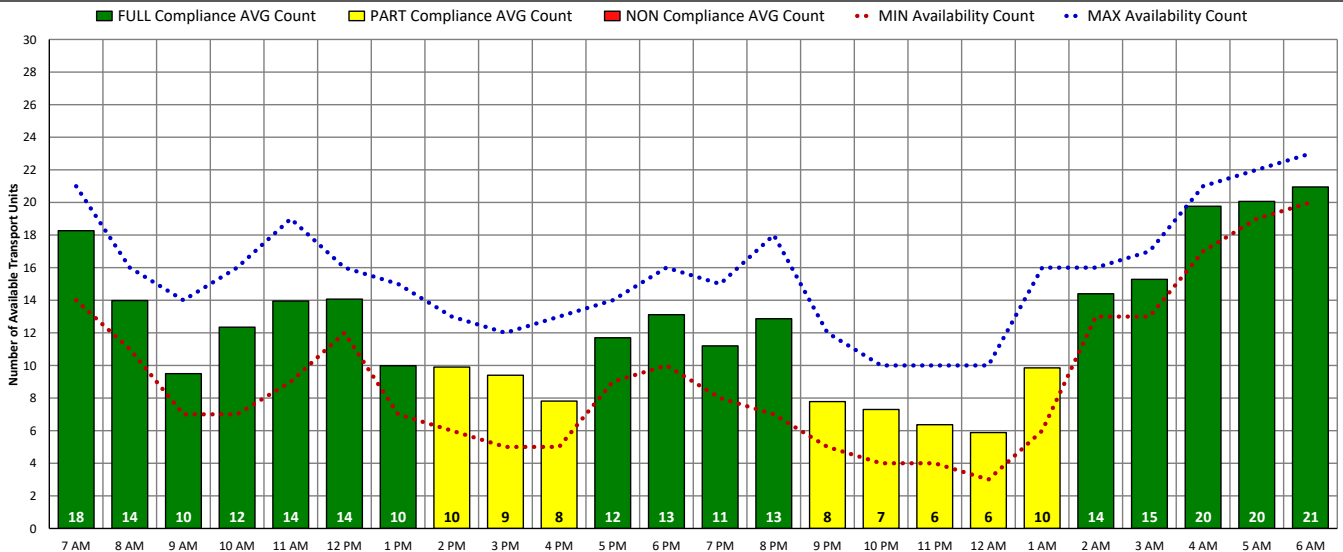


DISTRICT OF COLUMBIA FIRE AND EMS DEPARTMENT

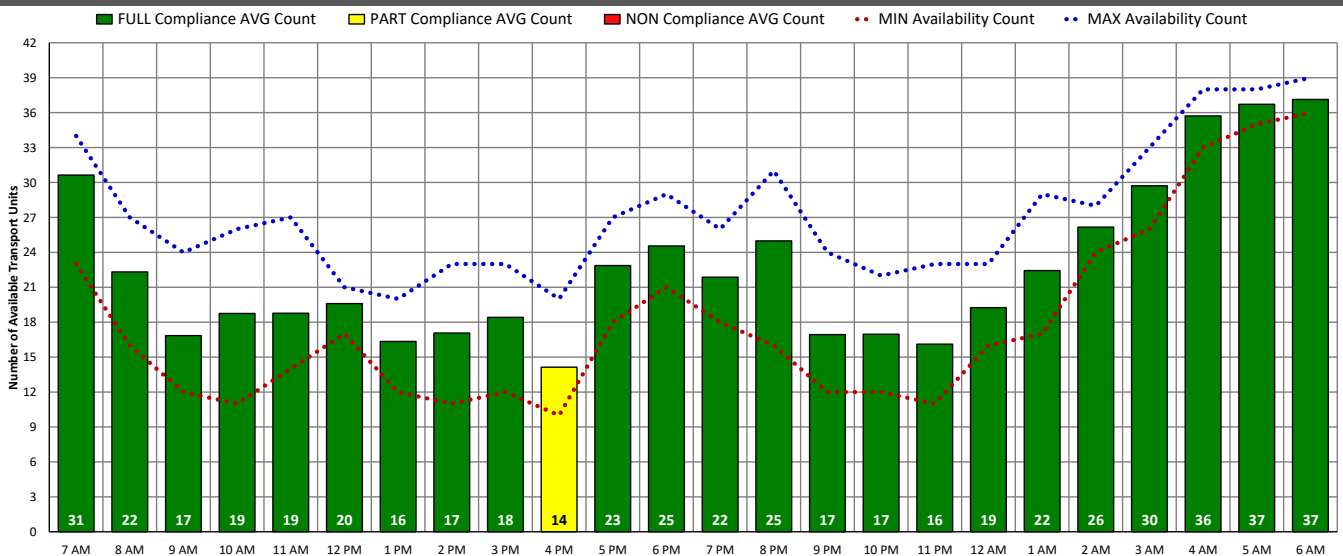
ALS Transport Unit Availability Compliance (TUE – 10/18/22)



BLS Transport Unit Availability Compliance (TUE – 10/18/22)

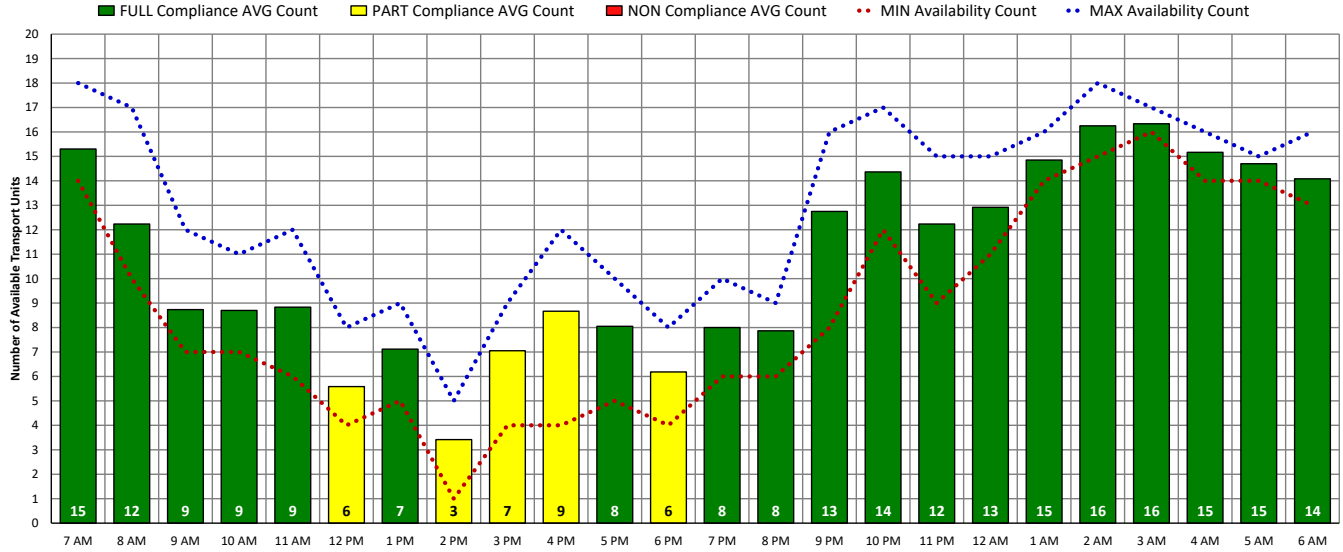


ALL Transport Unit Availability Compliance (TUE – 10/18/22)

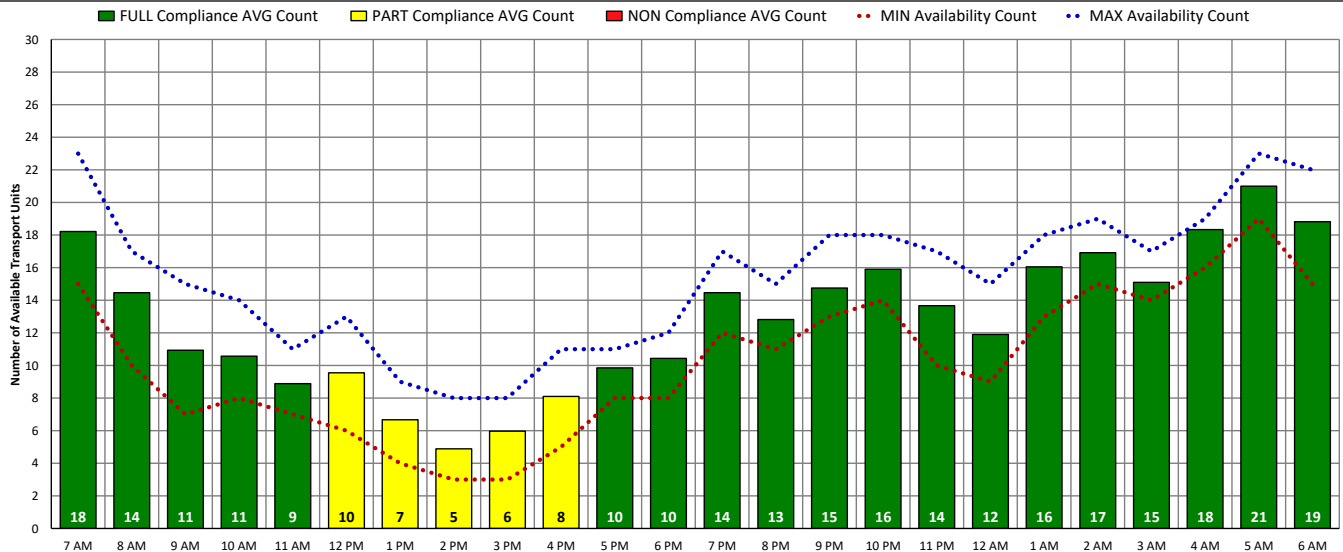


DISTRICT OF COLUMBIA FIRE AND EMS DEPARTMENT

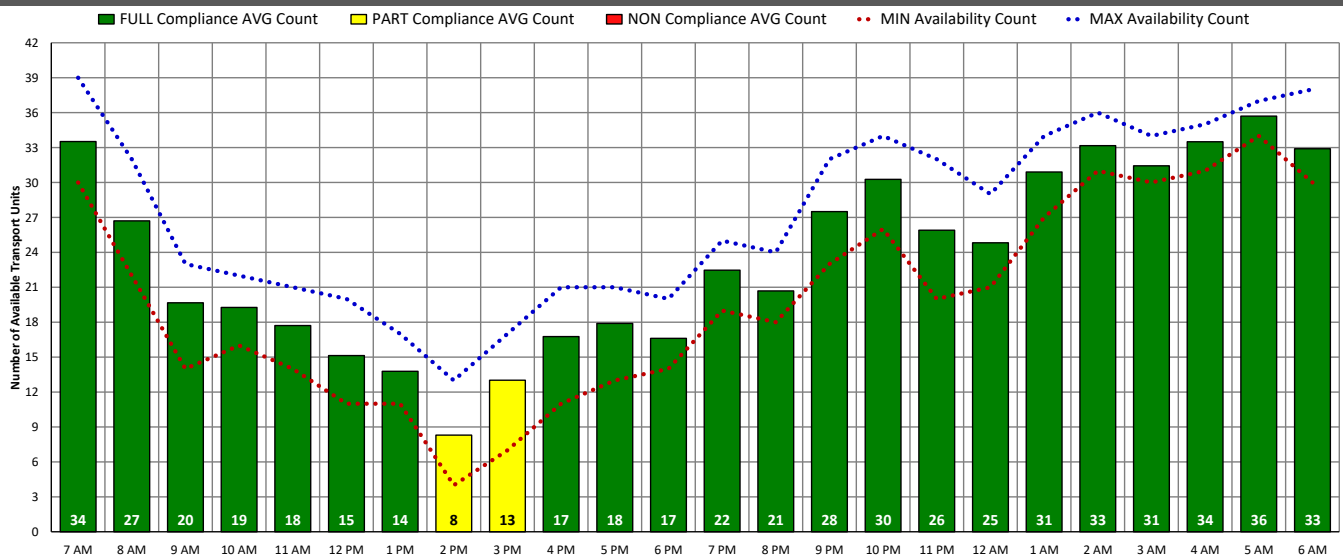
ALS Transport Unit Availability Compliance (WED – 10/19/22)



BLS Transport Unit Availability Compliance (WED – 10/19/22)

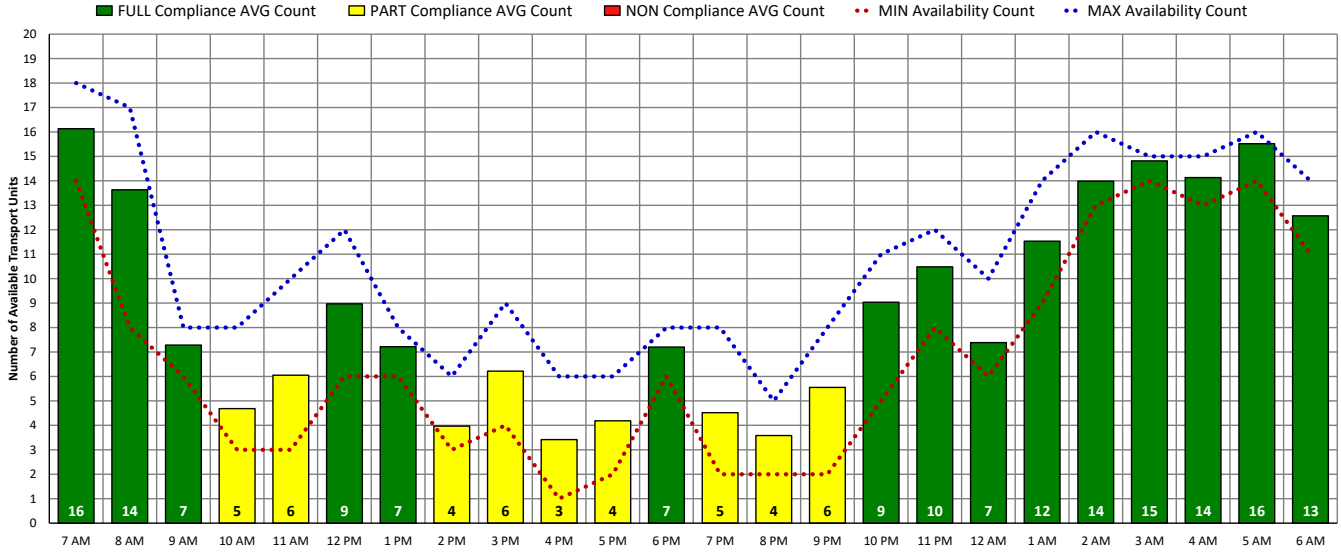


ALL Transport Unit Availability Compliance (WED – 10/19/22)

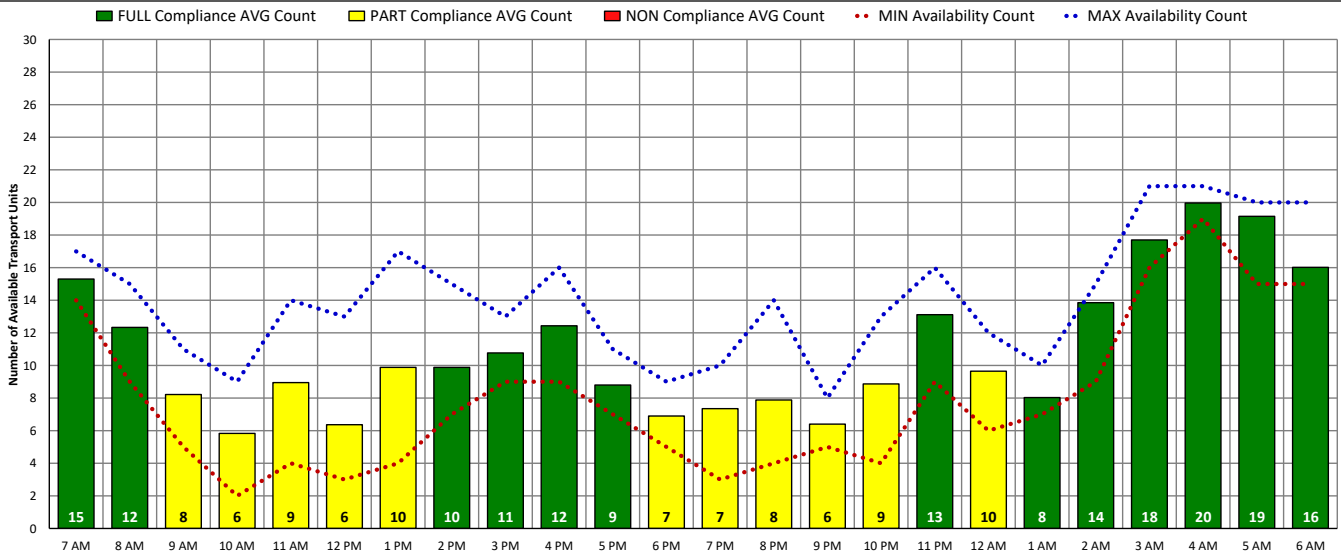


DISTRICT OF COLUMBIA FIRE AND EMS DEPARTMENT

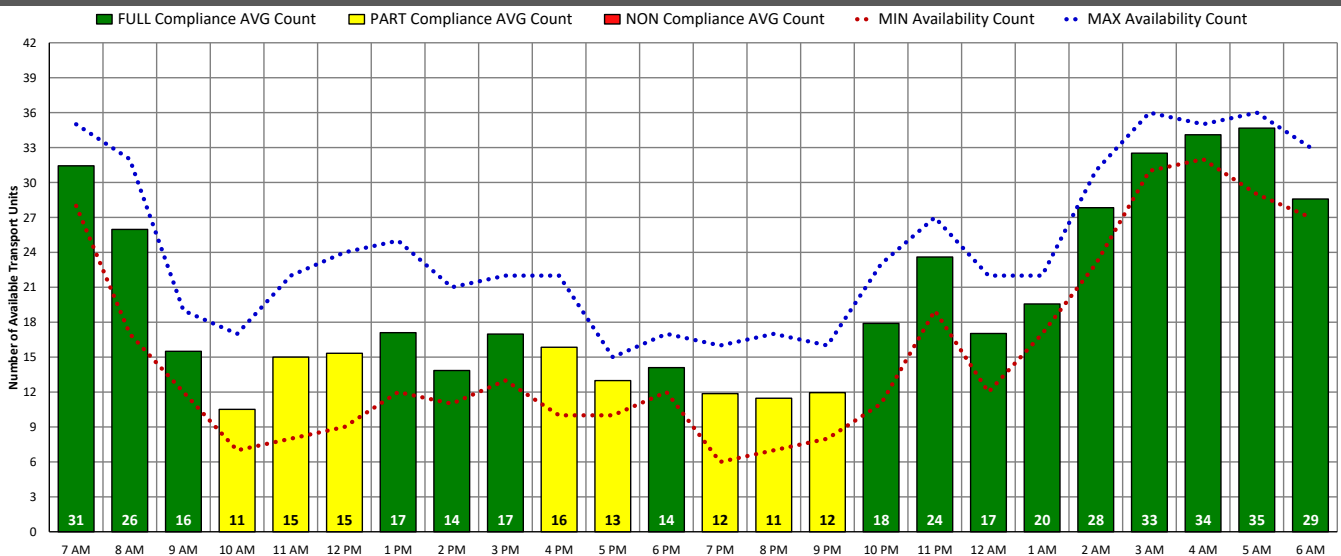
ALS Transport Unit Availability Compliance (THU – 10/20/22)



BLS Transport Unit Availability Compliance (THU – 10/20/22)

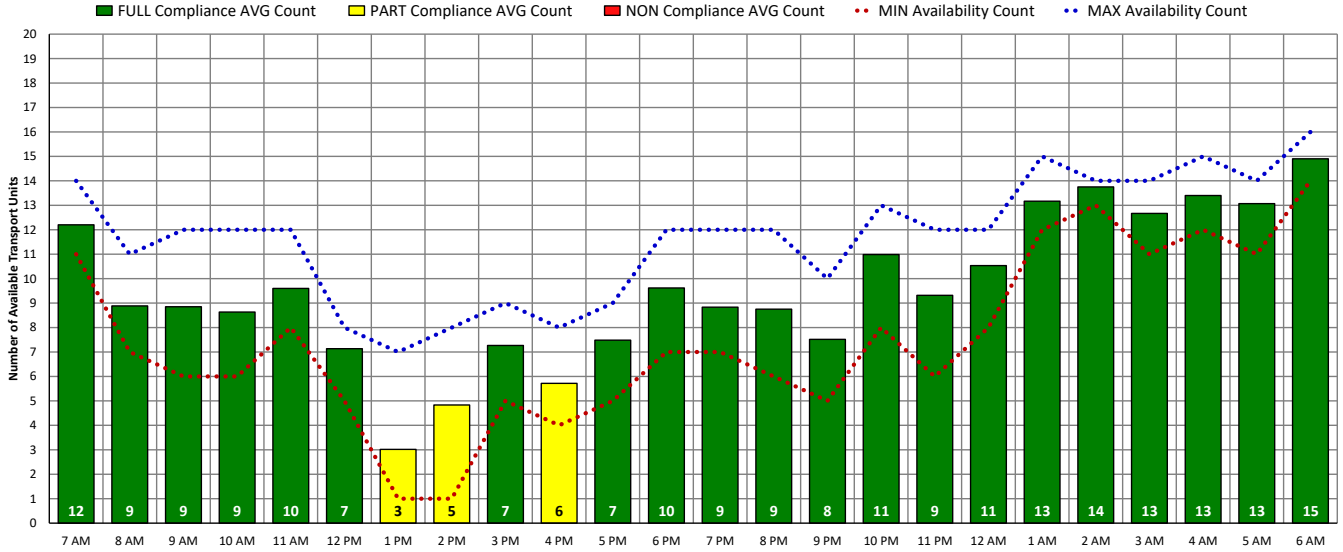


ALL Transport Unit Availability Compliance (THU – 10/20/22)

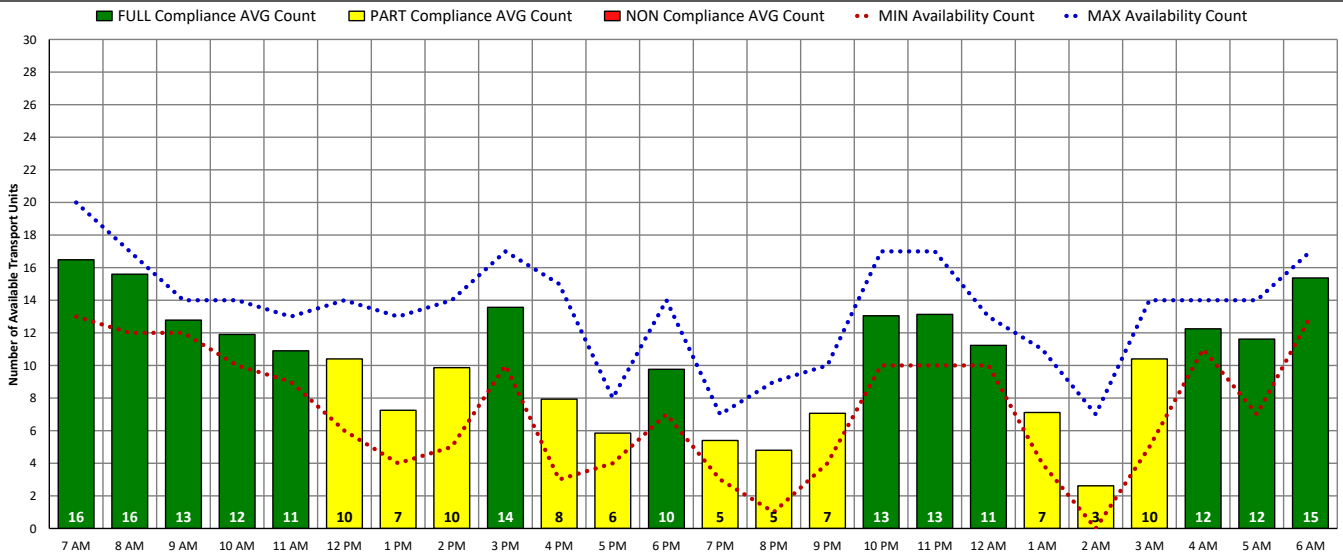


DISTRICT OF COLUMBIA FIRE AND EMS DEPARTMENT

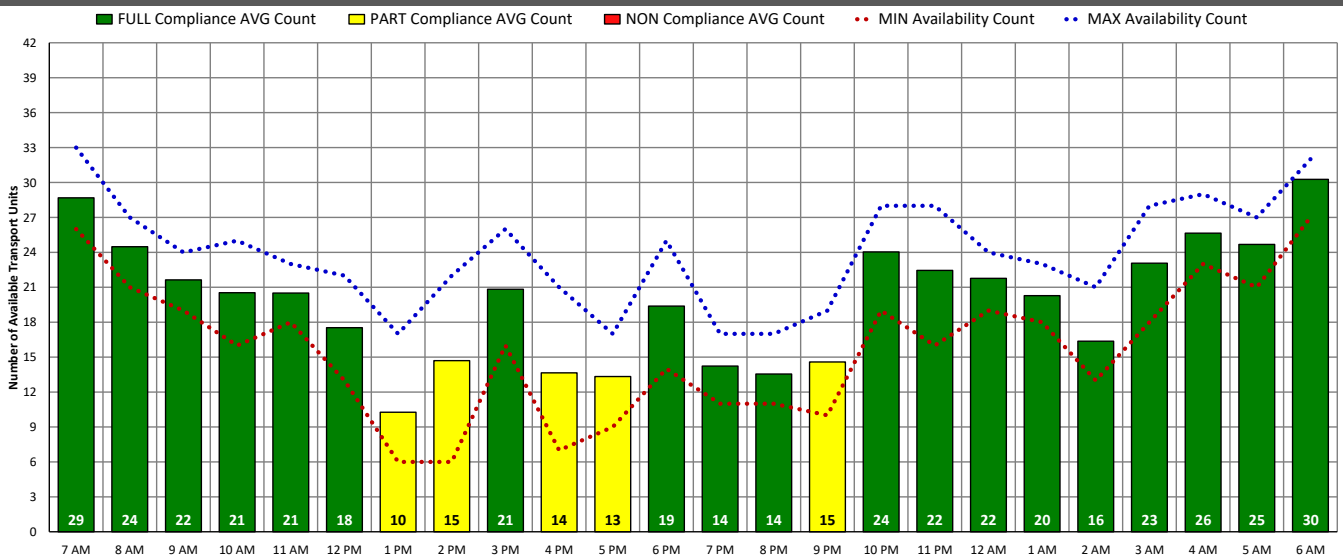
ALS Transport Unit Availability Compliance (FRI – 10/21/22)



BLS Transport Unit Availability Compliance (FRI – 10/21/22)

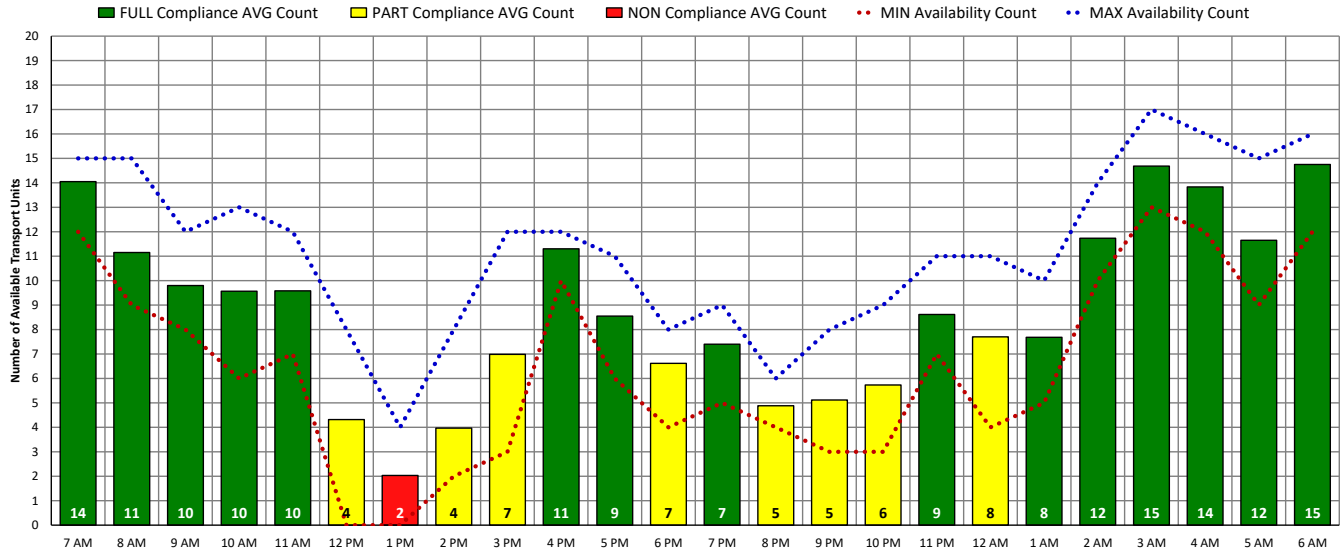


ALL Transport Unit Availability Compliance (FRI – 10/21/22)

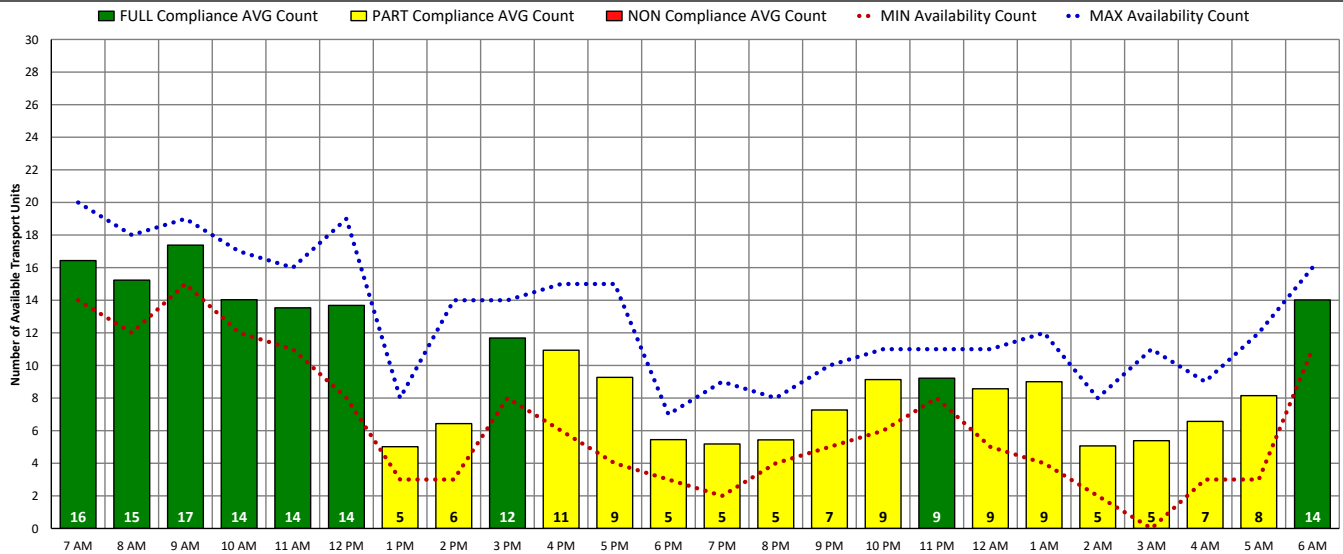


DISTRICT OF COLUMBIA FIRE AND EMS DEPARTMENT

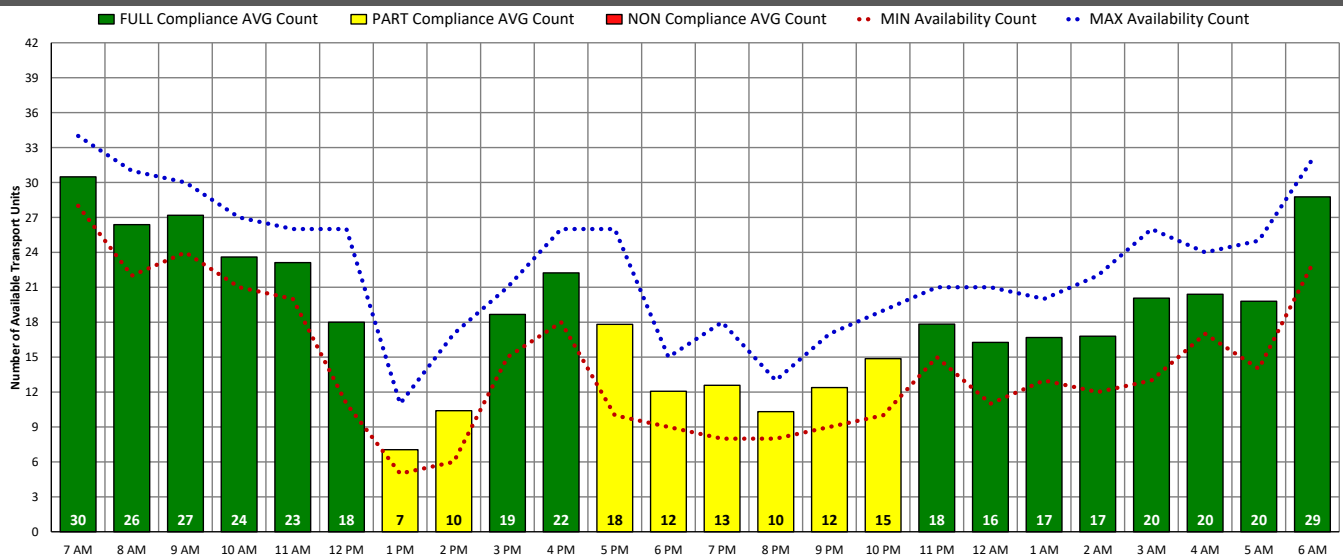
ALS Transport Unit Availability Compliance (SAT – 10/22/22)



BLS Transport Unit Availability Compliance (SAT – 10/22/22)

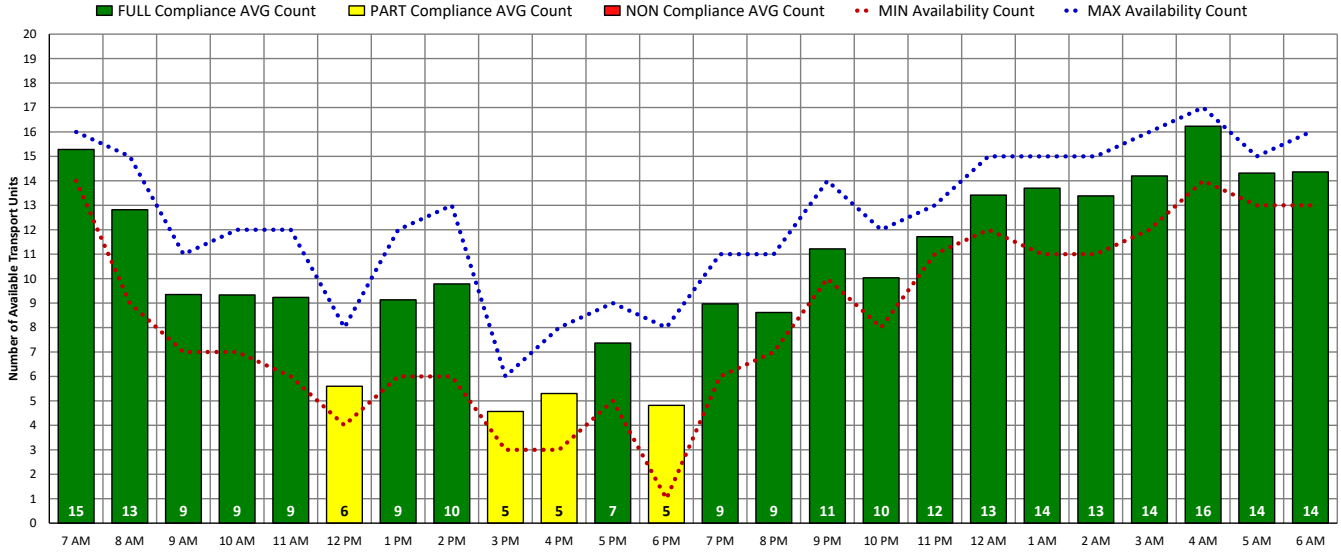


ALL Transport Unit Availability Compliance (SAT – 10/22/22)

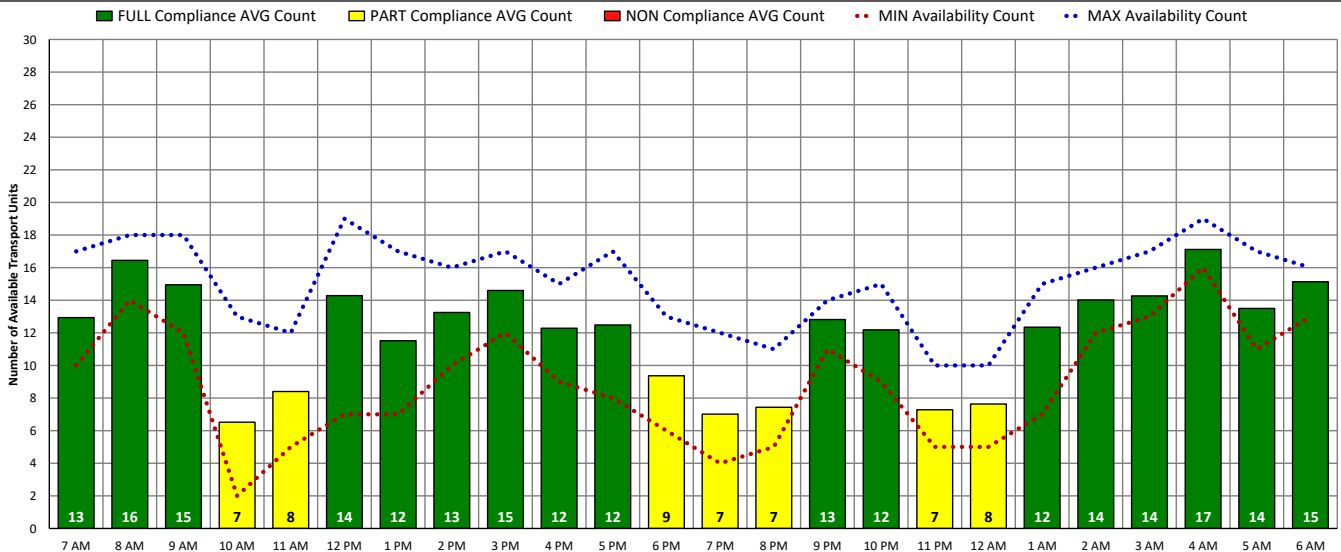


DISTRICT OF COLUMBIA FIRE AND EMS DEPARTMENT

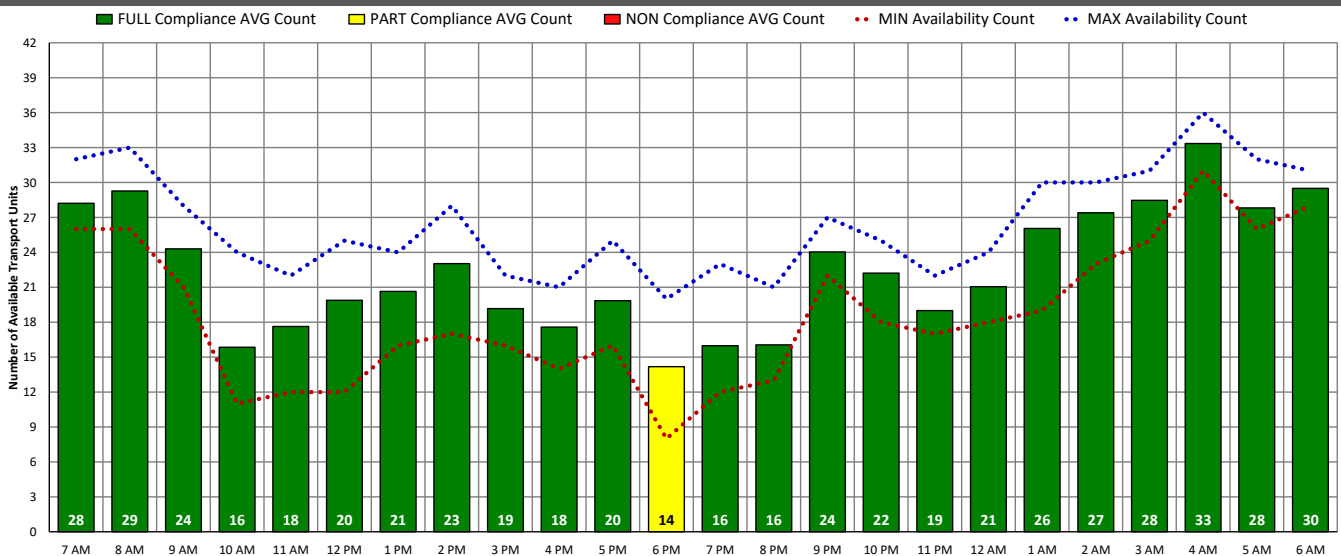
ALS Transport Unit Availability Compliance (SUN – 10/23/22)



BLS Transport Unit Availability Compliance (SUN – 10/23/22)

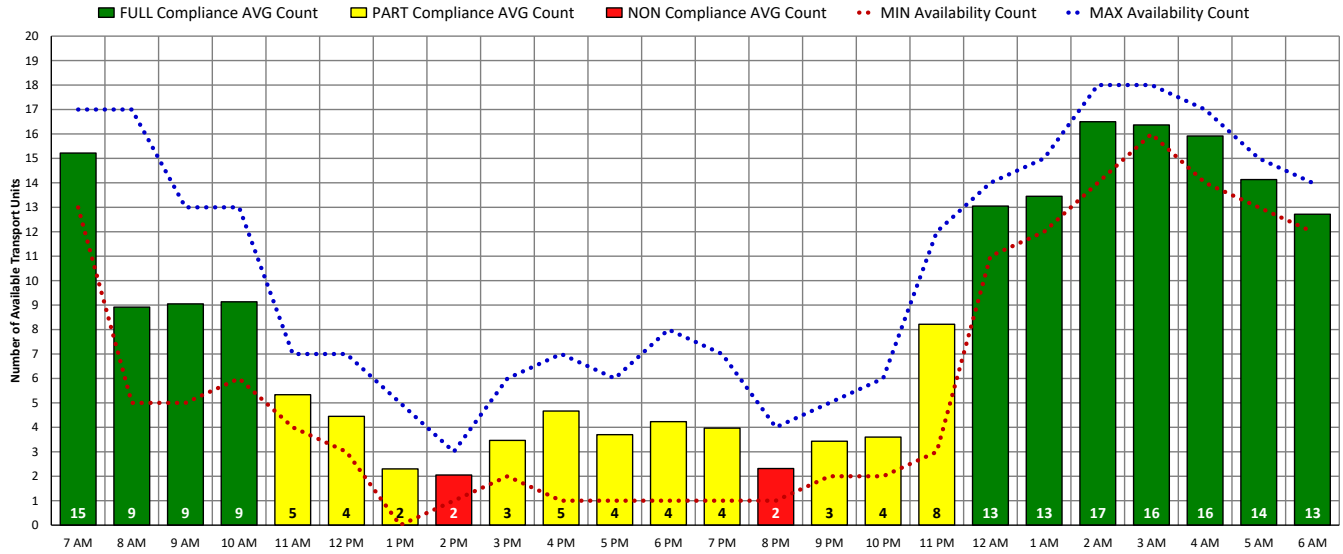


ALL Transport Unit Availability Compliance (SUN – 10/23/22)

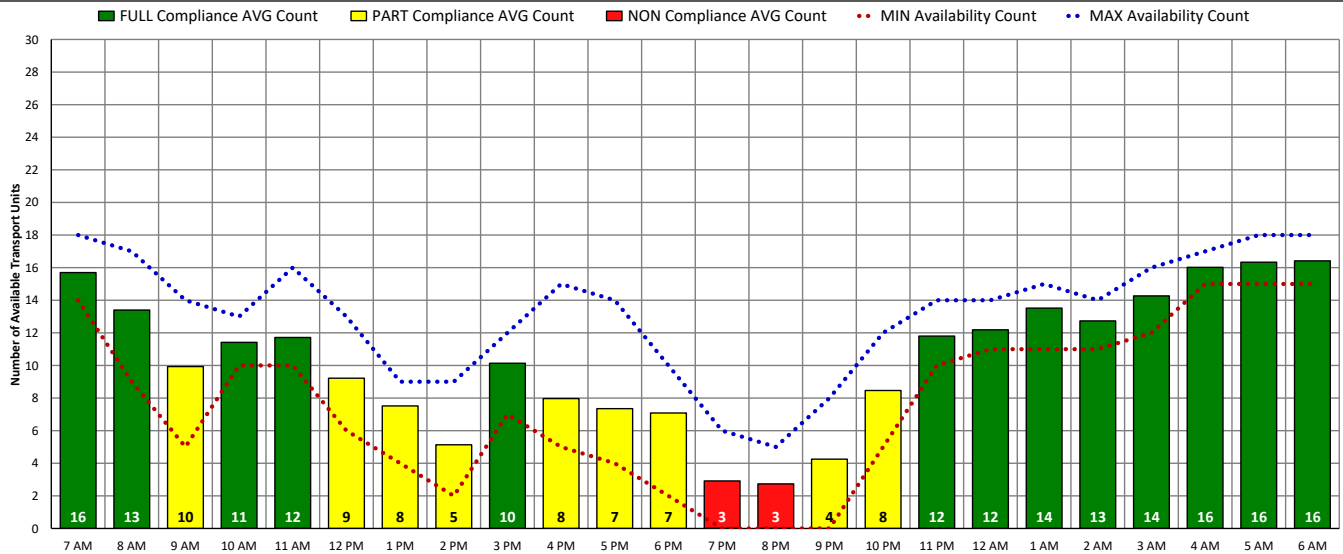


DISTRICT OF COLUMBIA FIRE AND EMS DEPARTMENT

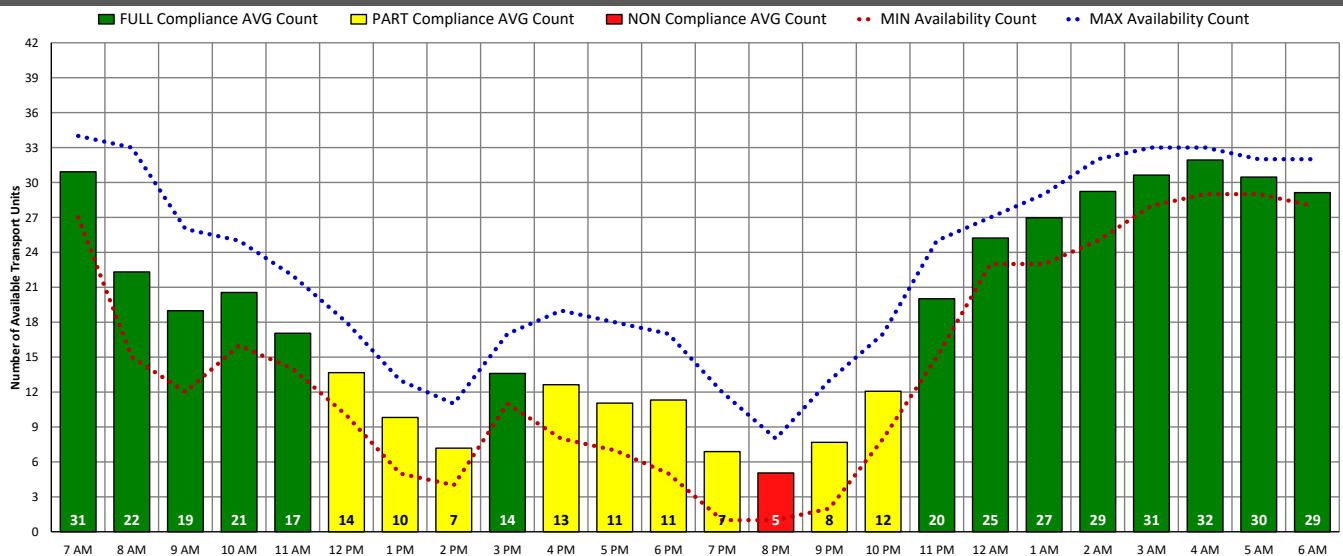
ALS Transport Unit Availability Compliance (MON – 10/24/22)



BLS Transport Unit Availability Compliance (MON – 10/24/22)

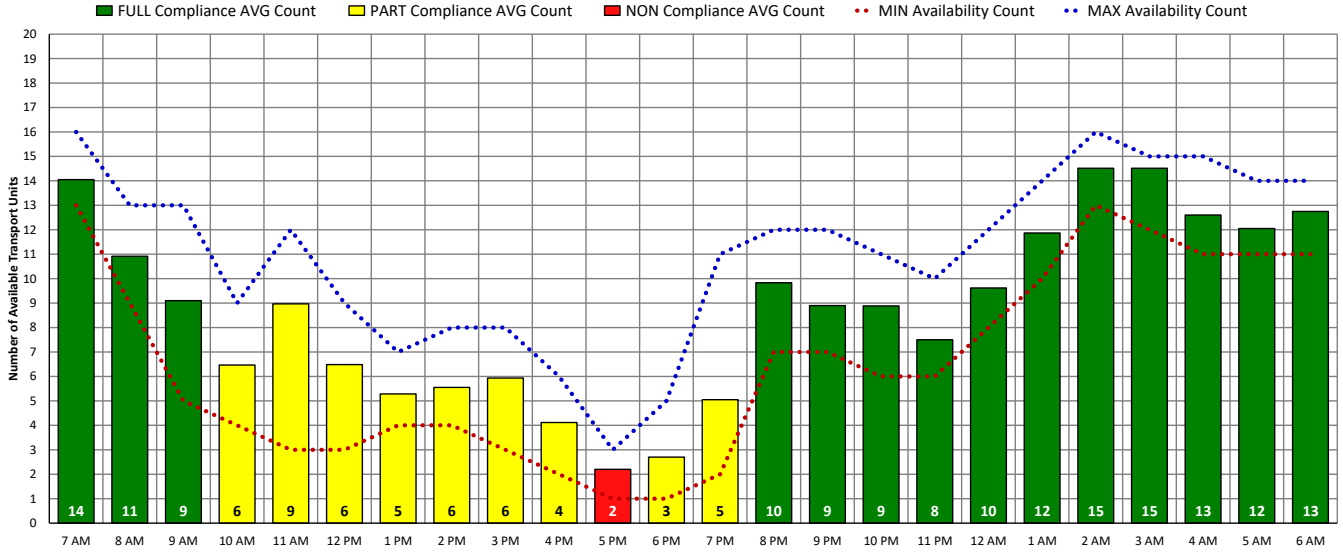


ALL Transport Unit Availability Compliance (MON – 10/24/22)

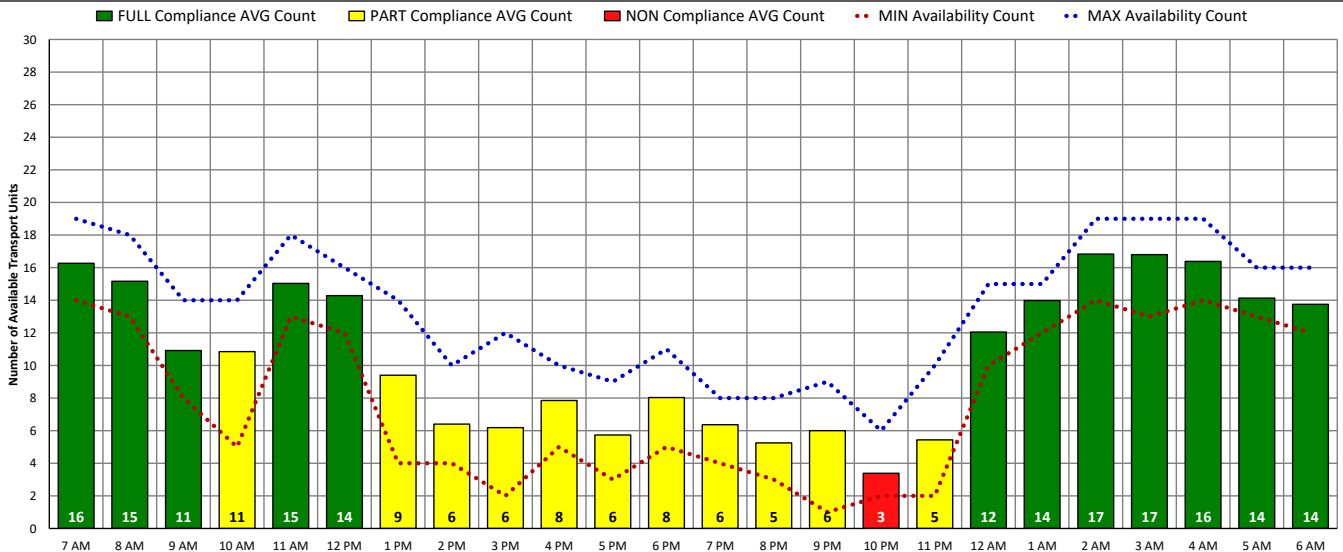


DISTRICT OF COLUMBIA FIRE AND EMS DEPARTMENT

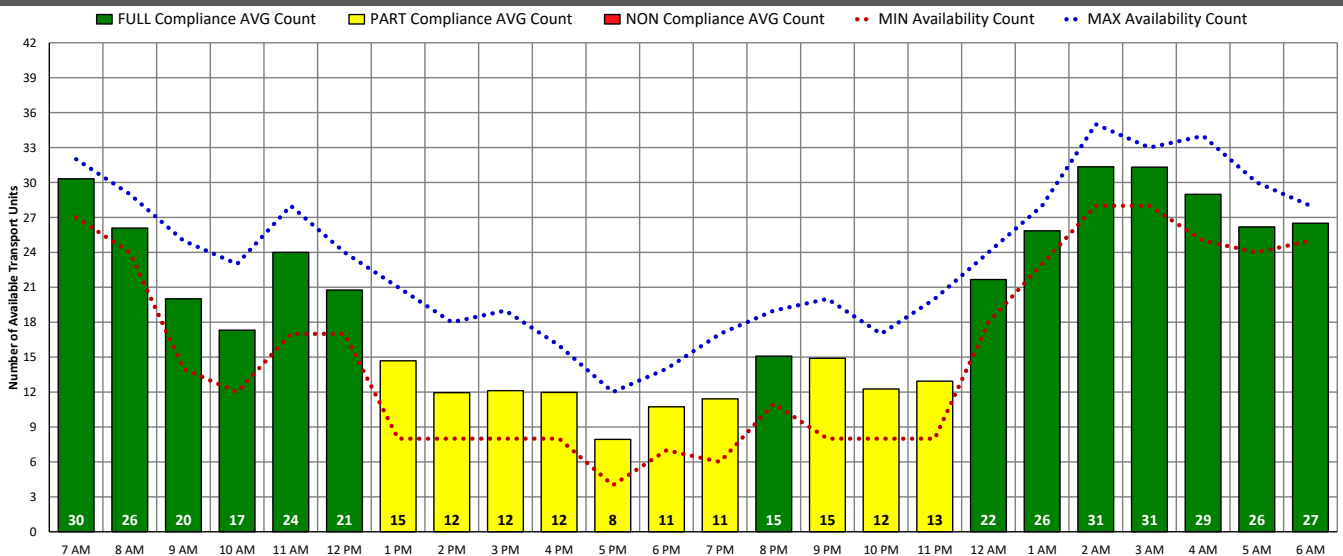
ALS Transport Unit Availability Compliance (TUE – 10/25/22)



BLS Transport Unit Availability Compliance (TUE – 10/25/22)

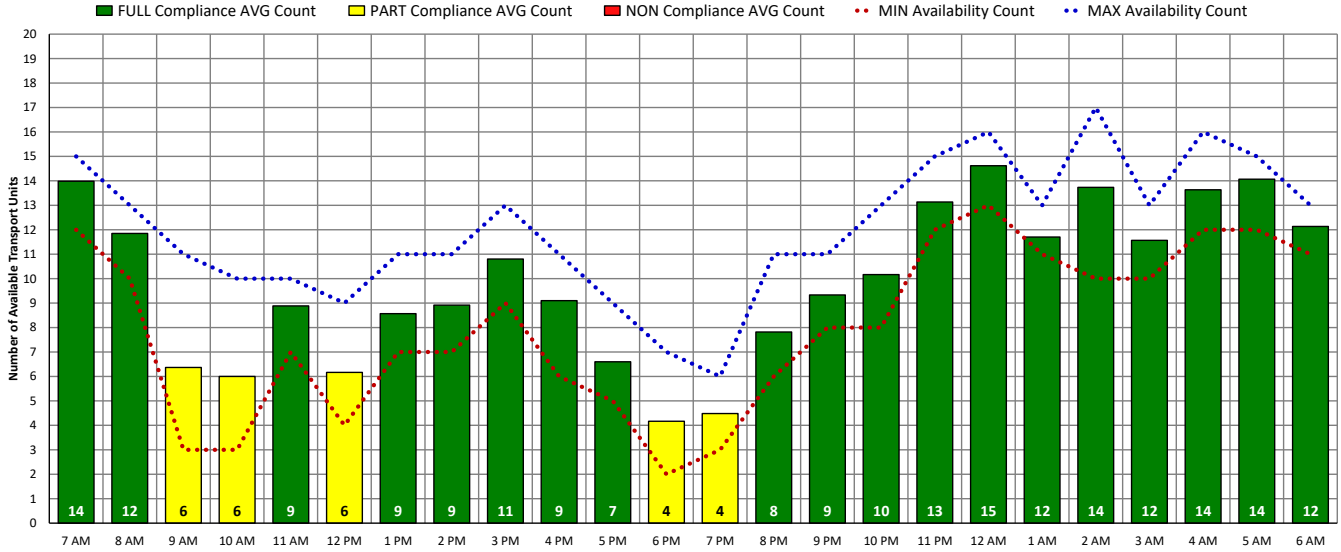


ALL Transport Unit Availability Compliance (TUE – 10/25/22)

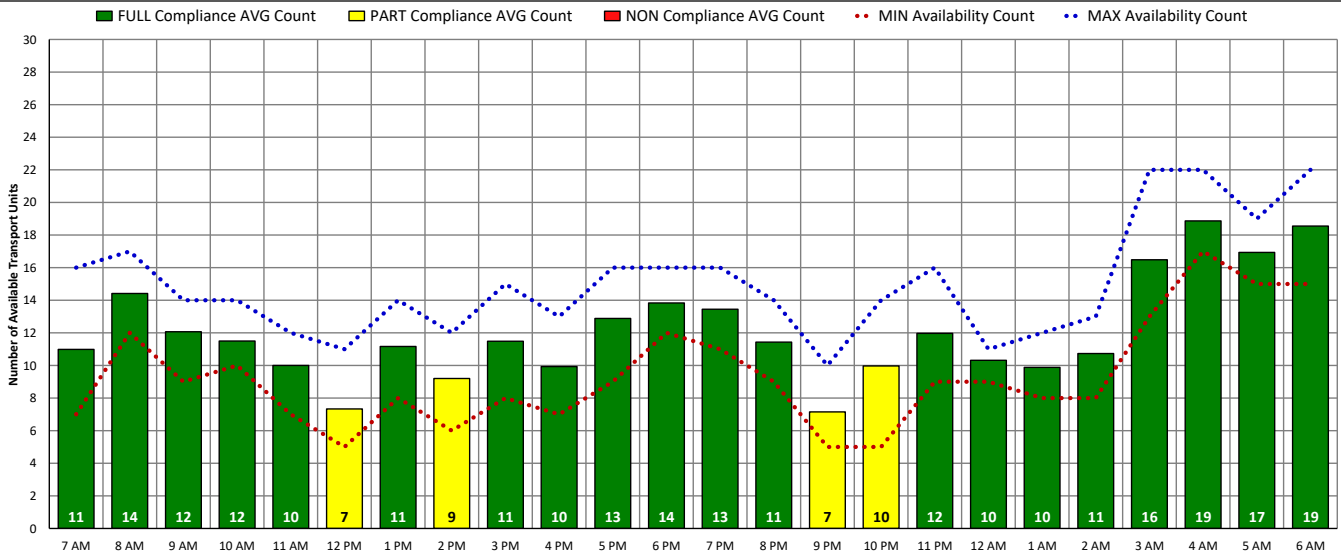


DISTRICT OF COLUMBIA FIRE AND EMS DEPARTMENT

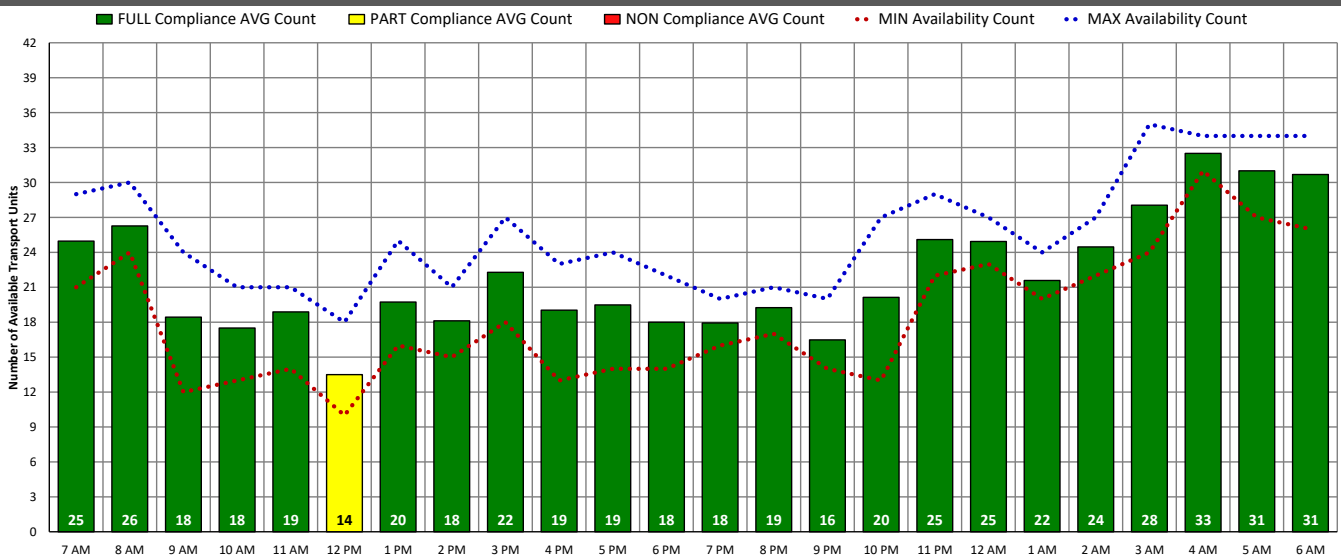
ALS Transport Unit Availability Compliance (WED – 10/26/22)



BLS Transport Unit Availability Compliance (WED – 10/26/22)

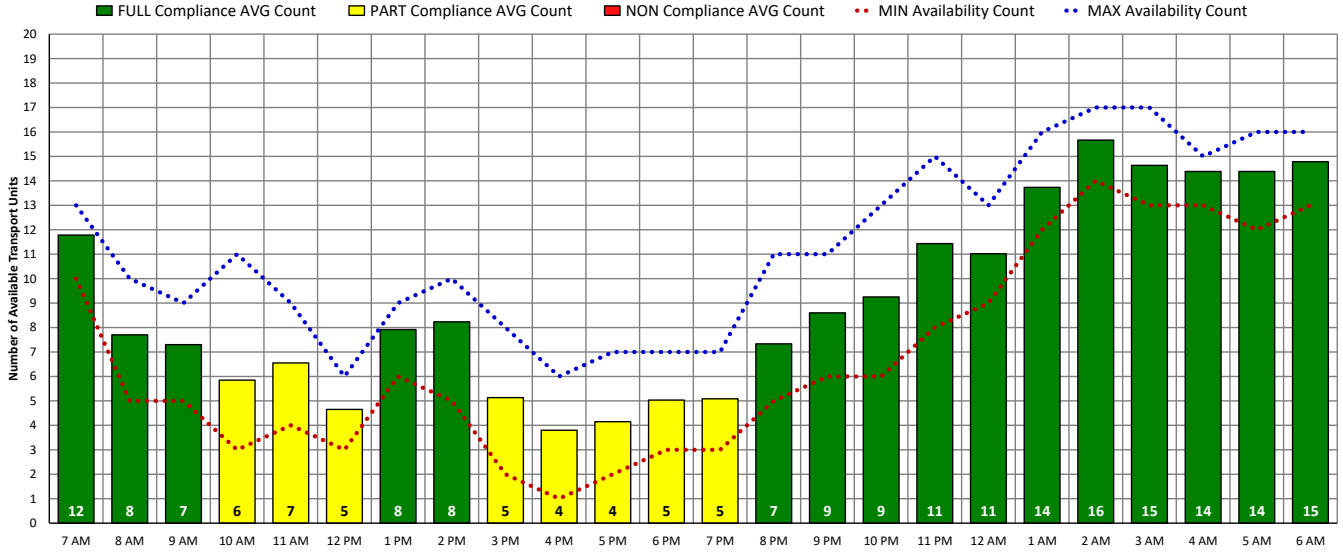


ALL Transport Unit Availability Compliance (WED – 10/26/22)

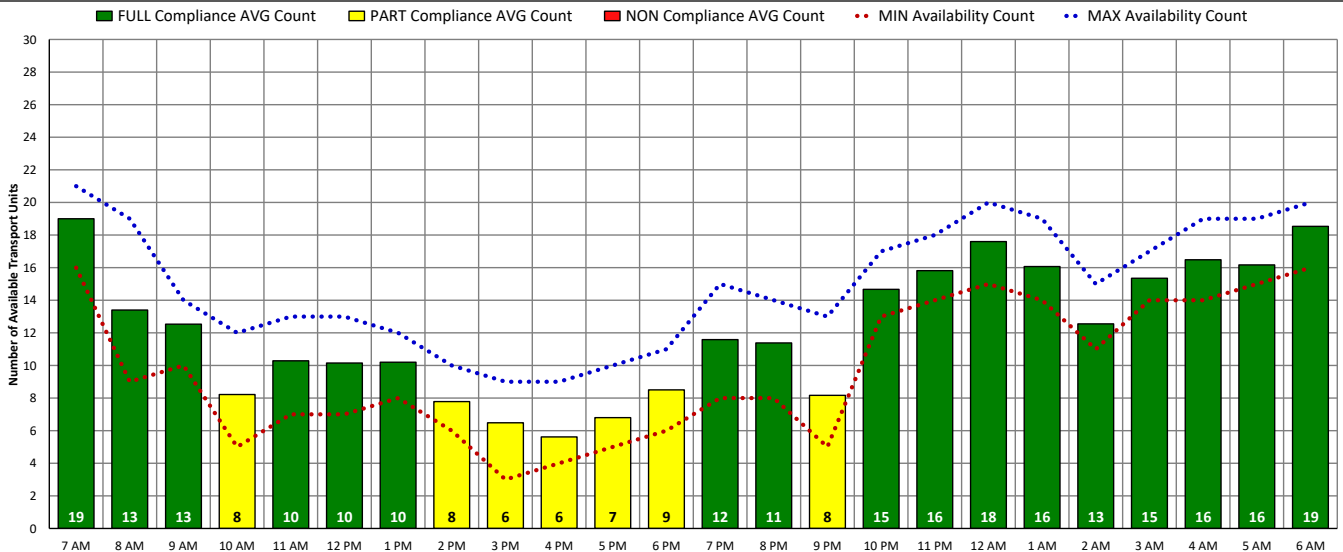


DISTRICT OF COLUMBIA FIRE AND EMS DEPARTMENT

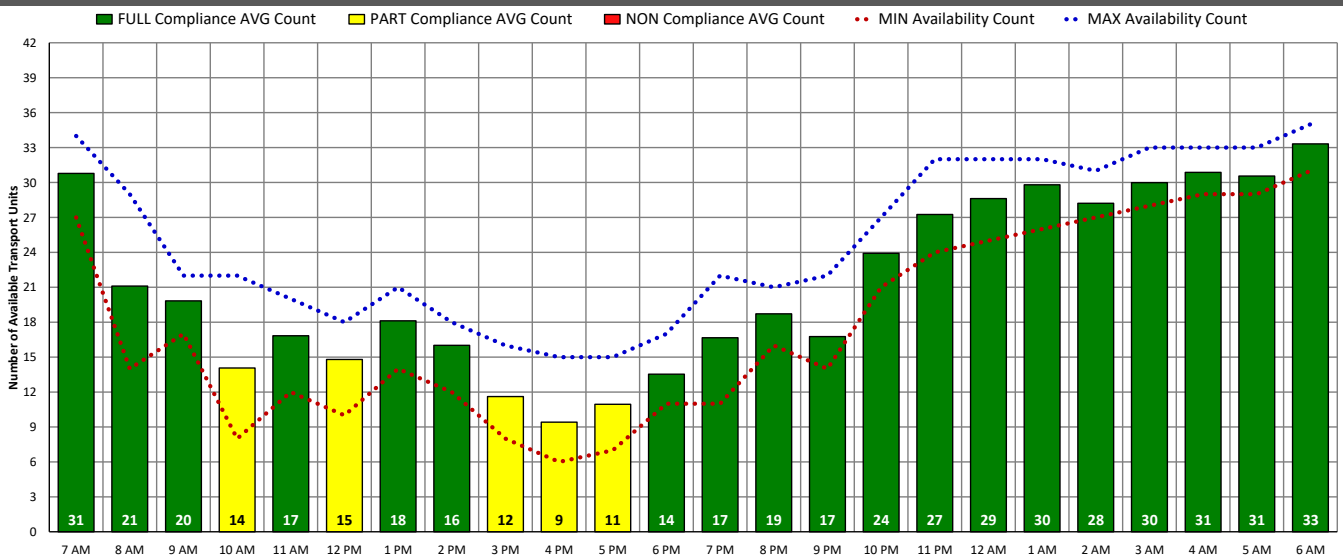
ALS Transport Unit Availability Compliance (THU – 10/27/22)



BLS Transport Unit Availability Compliance (THU – 10/27/22)

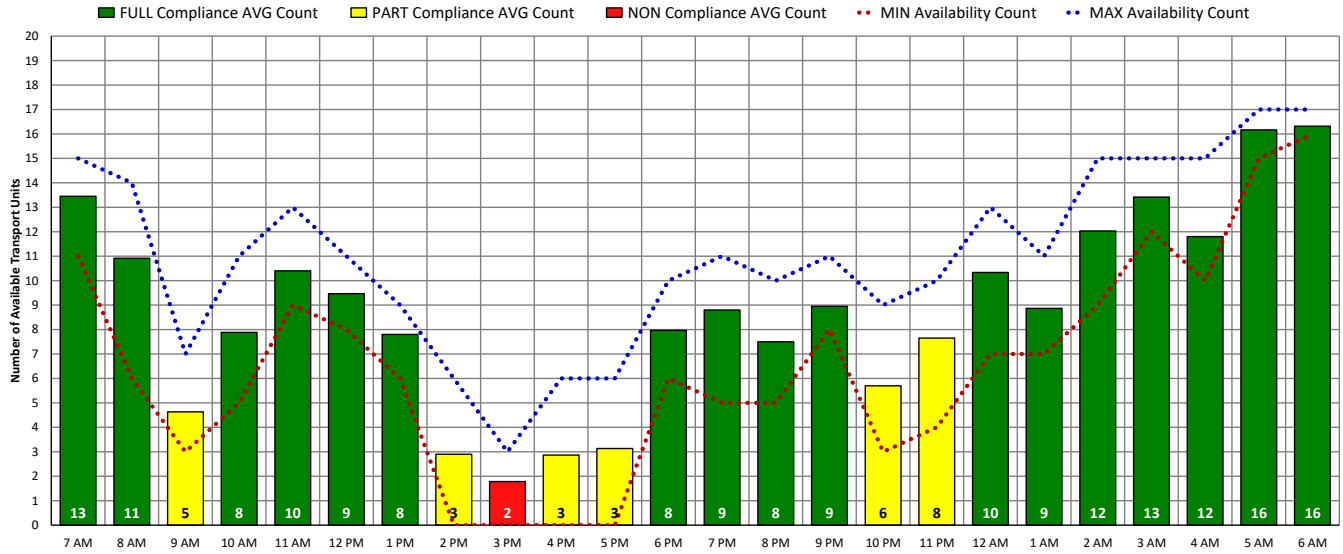


ALL Transport Unit Availability Compliance (THU – 10/27/22)

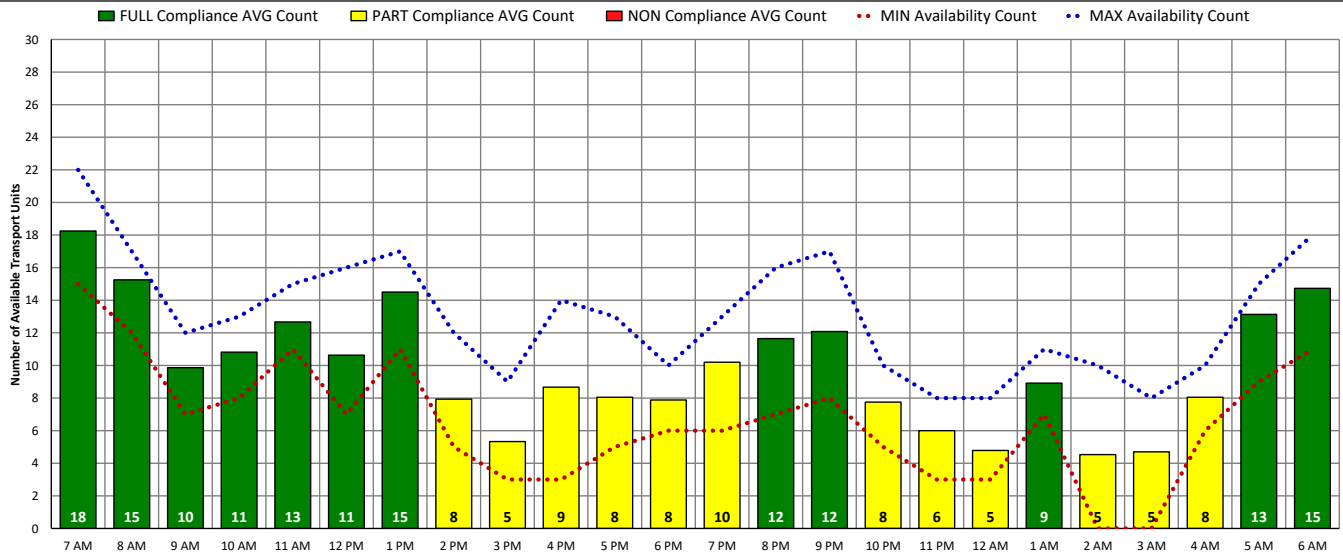


DISTRICT OF COLUMBIA FIRE AND EMS DEPARTMENT

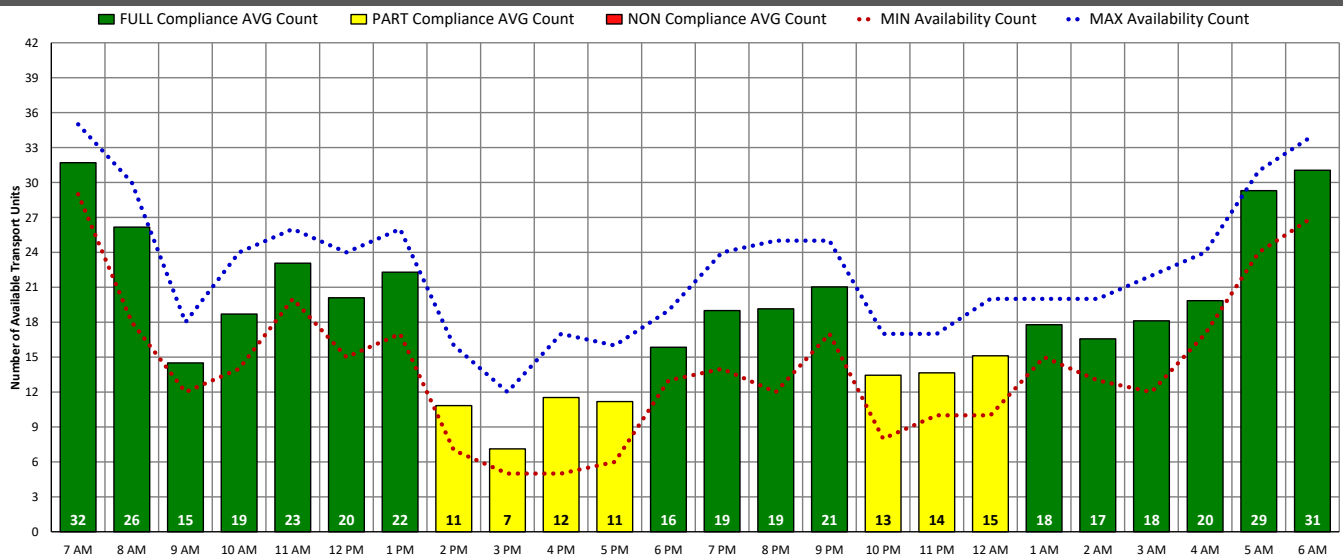
ALS Transport Unit Availability Compliance (FRI – 10/28/22)



BLS Transport Unit Availability Compliance (FRI – 10/28/22)

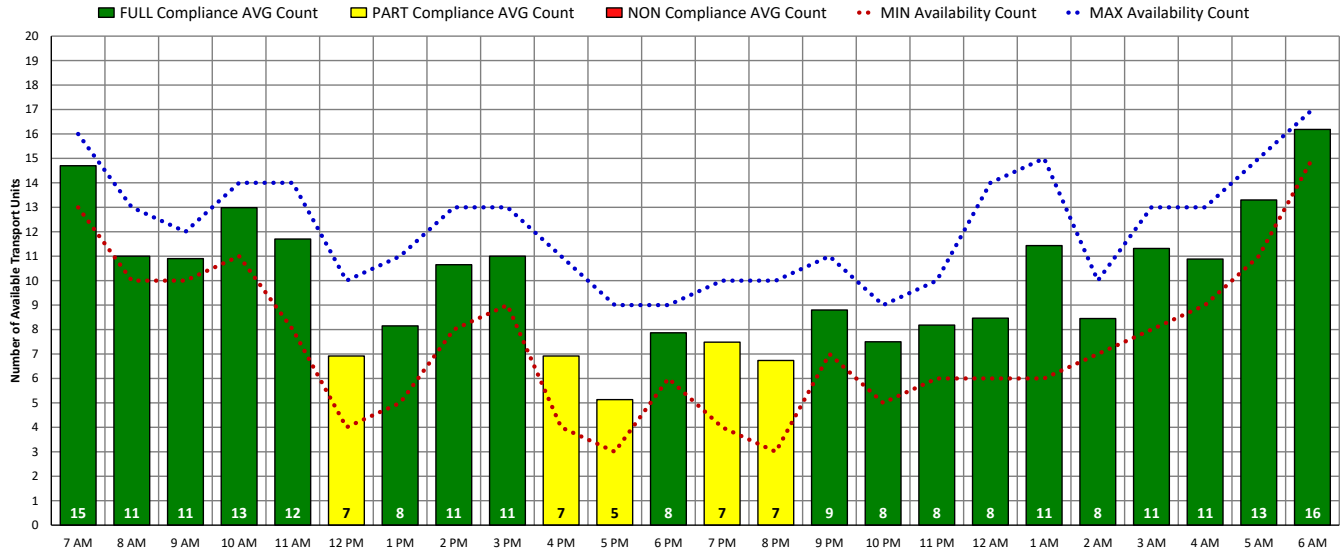


ALL Transport Unit Availability Compliance (FRI – 10/28/22)

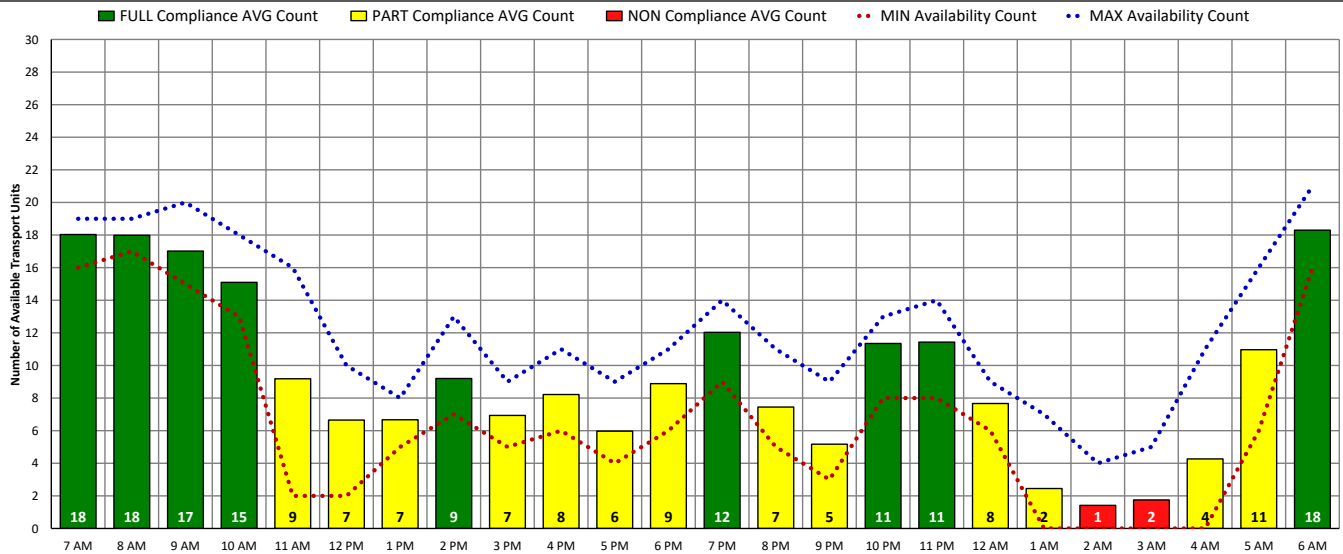


DISTRICT OF COLUMBIA FIRE AND EMS DEPARTMENT

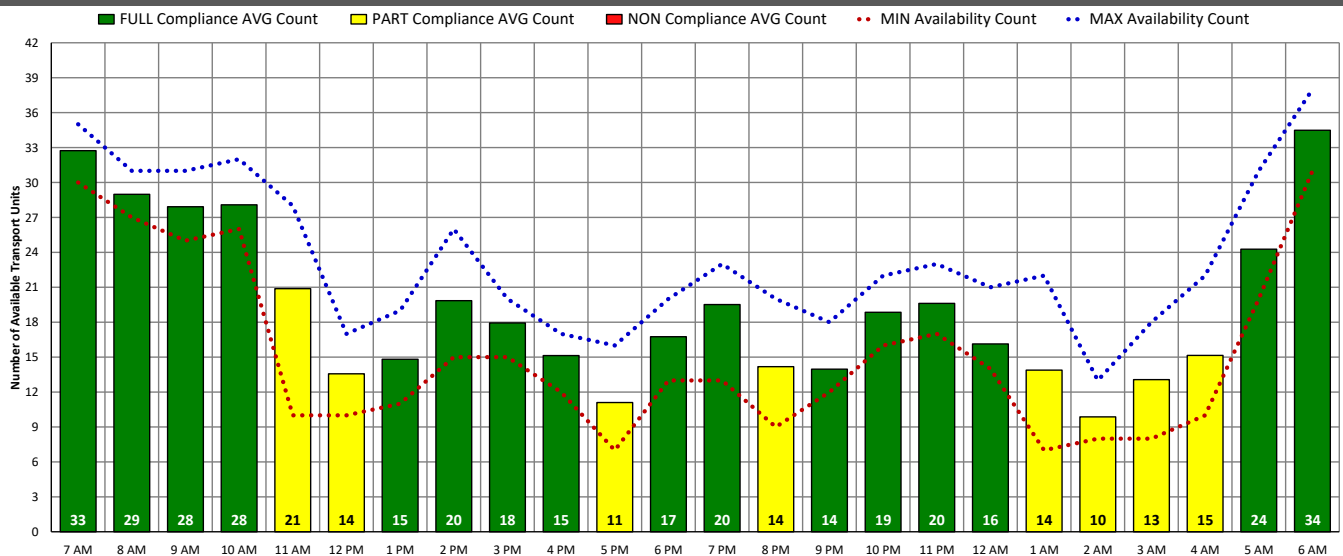
ALS Transport Unit Availability Compliance (SAT – 10/29/22)



BLS Transport Unit Availability Compliance (SAT – 10/29/22)

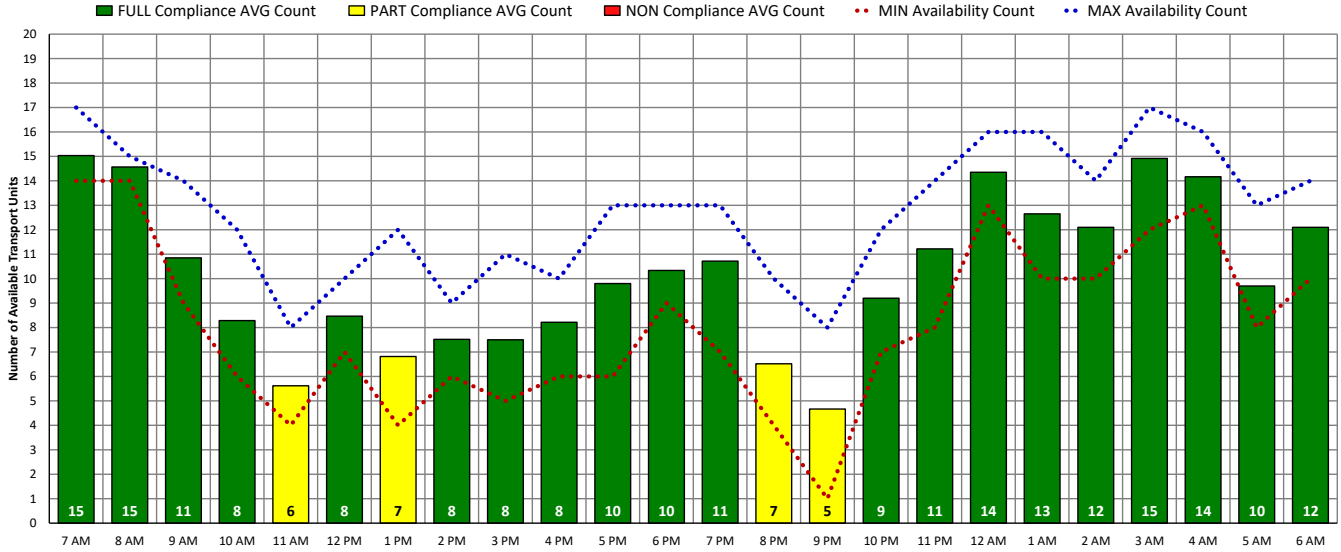


ALL Transport Unit Availability Compliance (SAT – 10/29/22)

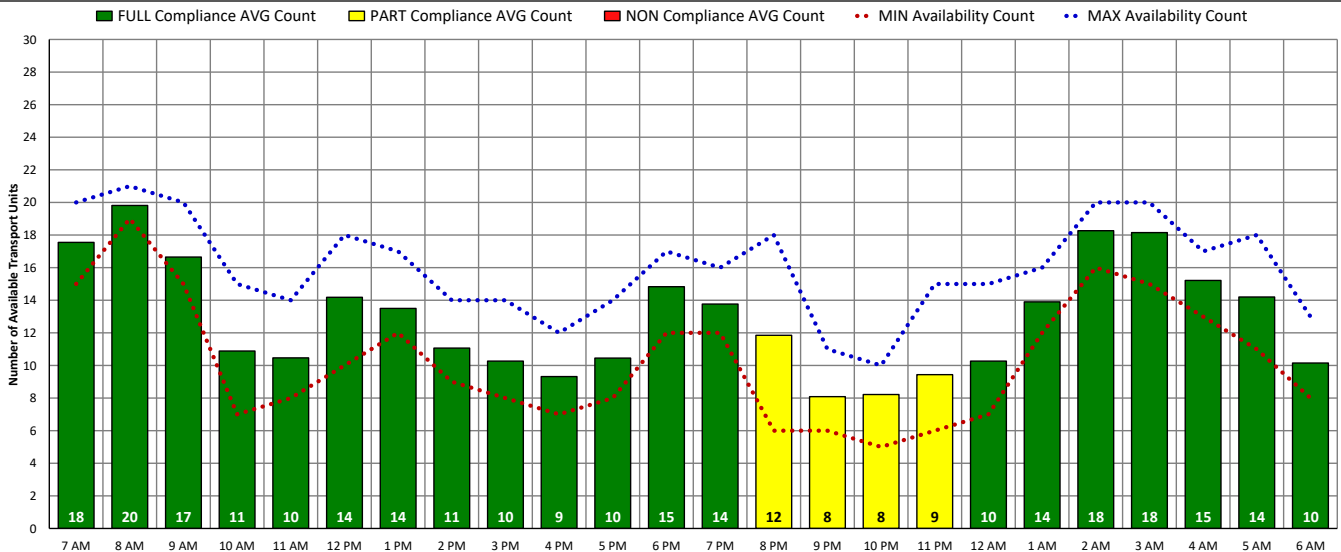


DISTRICT OF COLUMBIA FIRE AND EMS DEPARTMENT

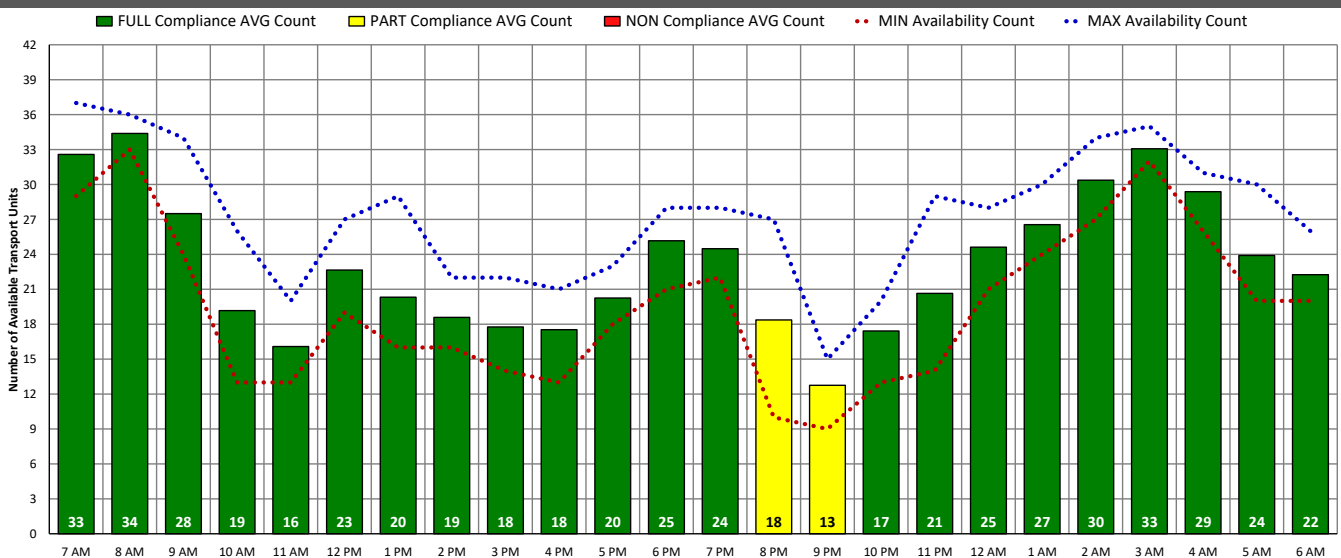
ALS Transport Unit Availability Compliance (SUN – 10/30/22)



BLS Transport Unit Availability Compliance (SUN – 10/30/22)

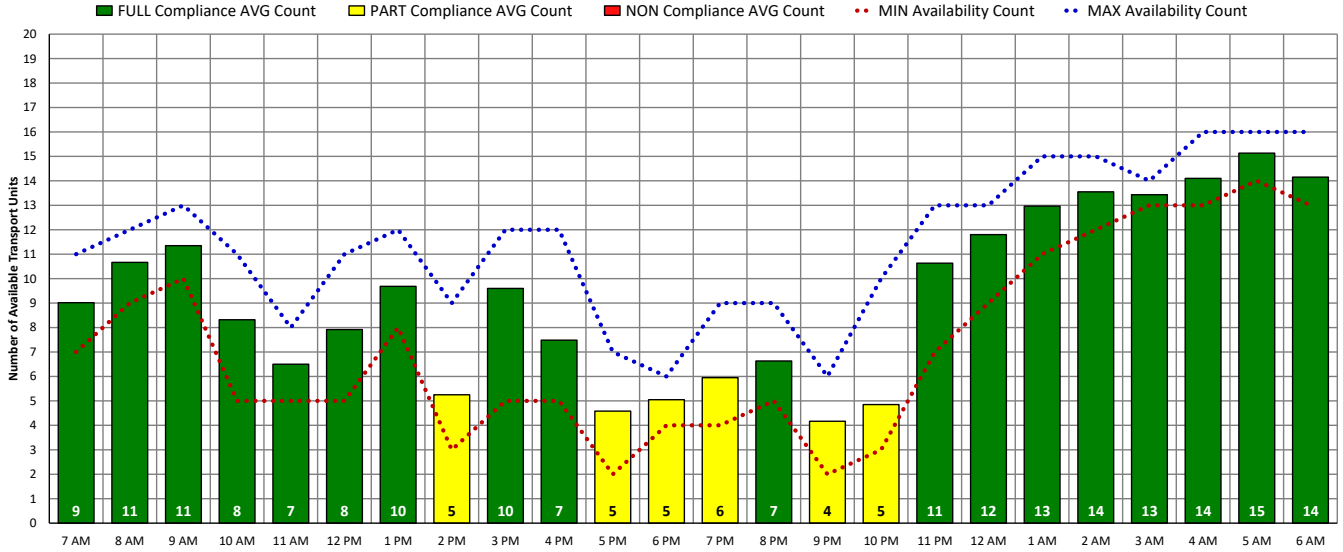


ALL Transport Unit Availability Compliance (SUN – 10/30/22)

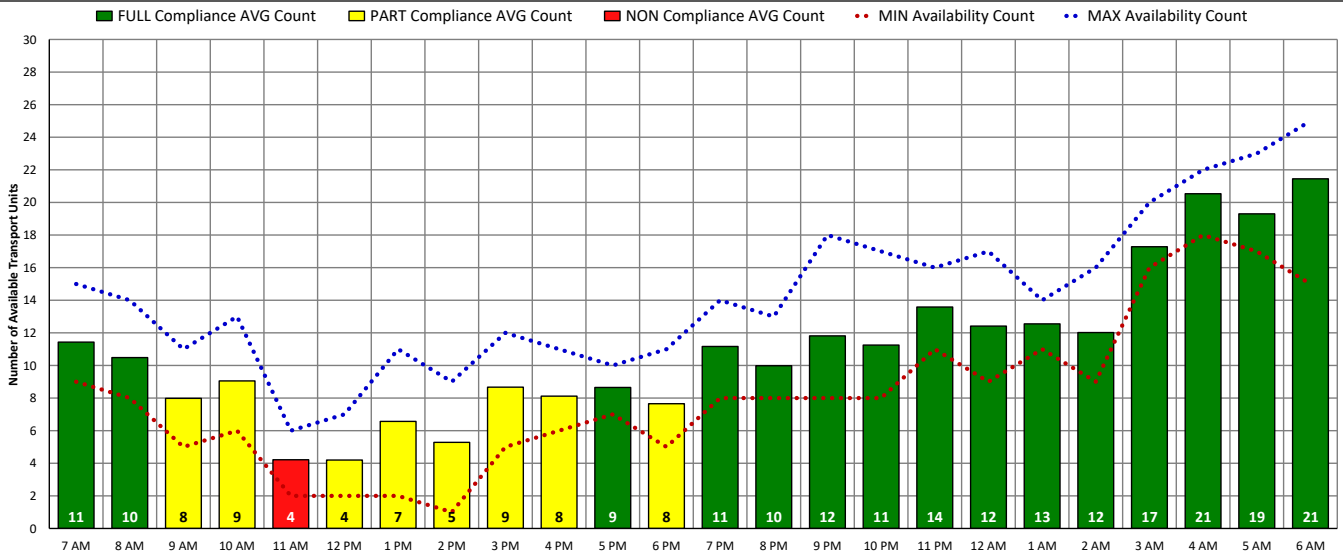


DISTRICT OF COLUMBIA FIRE AND EMS DEPARTMENT

ALS Transport Unit Availability Compliance (MON – 10/31/22)



BLS Transport Unit Availability Compliance (MON – 10/31/22)



ALL Transport Unit Availability Compliance (MON – 10/31/22)

