

DISTRICT OF COLUMBIA FIRE AND EMS DEPARTMENT



Transport Unit Availability Compliance ALL DAYS (APR-23)

PRODUCED ON: 05/02/2023

| DAYS and MONTH | | FULL ALS BLS ALL | PART ALS BLS ALL | NON ALS BLS ALL | PAGE |
|-------------------|--|------------------|------------------|-----------------|------|
| ALL DAYS (APR-23) | | 79% 79% 87% | 21% 20% 12% | 1% 1% 0% | 2 |

| DATE (OPS) | DOW (OPS) | ALS FULL PART NON | BLS FULL PART NON | ALL FULL PART NON | PAGE |
|------------|-----------|-------------------|-------------------|-------------------|------|
| 04/01/23 | SAT | 100% 0% 0% | 100% 0% 0% | 100% 0% 0% | 3 |
| 04/02/23 | SUN | 79% 21% 0% | 96% 4% 0% | 96% 4% 0% | 4 |
| 04/03/23 | MON | 67% 33% 0% | 79% 21% 0% | 79% 21% 0% | 5 |
| 04/04/23 | TUE | 63% 33% 4% | 63% 29% 8% | 67% 25% 8% | 6 |
| 04/05/23 | WED | 71% 29% 0% | 67% 33% 0% | 79% 21% 0% | 7 |
| 04/06/23 | THU | 71% 29% 0% | 54% 42% 4% | 67% 33% 0% | 8 |
| 04/07/23 | FRI | 79% 21% 0% | 96% 4% 0% | 100% 0% 0% | 9 |
| 04/08/23 | SAT | 100% 0% 0% | 96% 4% 0% | 100% 0% 0% | 10 |
| 04/09/23 | SUN | 83% 17% 0% | 100% 0% 0% | 96% 4% 0% | 11 |
| 04/10/23 | MON | 71% 29% 0% | 63% 38% 0% | 79% 21% 0% | 12 |
| 04/11/23 | TUE | 71% 25% 4% | 67% 33% 0% | 79% 21% 0% | 13 |
| 04/12/23 | WED | 54% 42% 4% | 58% 29% 13% | 63% 33% 4% | 14 |
| 04/13/23 | THU | 71% 29% 0% | 75% 25% 0% | 88% 13% 0% | 15 |
| 04/14/23 | FRI | 58% 42% 0% | 75% 25% 0% | 83% 17% 0% | 16 |
| 04/15/23 | SAT | 79% 21% 0% | 79% 21% 0% | 83% 17% 0% | 17 |
| 04/16/23 | SUN | 79% 21% 0% | 88% 13% 0% | 100% 0% 0% | 18 |
| 04/17/23 | MON | 96% 4% 0% | 71% 29% 0% | 92% 8% 0% | 19 |
| 04/18/23 | TUE | 75% 25% 0% | 75% 25% 0% | 92% 8% 0% | 20 |
| 04/19/23 | WED | 75% 25% 0% | 83% 17% 0% | 92% 8% 0% | 21 |
| 04/20/23 | THU | 83% 17% 0% | 88% 13% 0% | 88% 13% 0% | 22 |
| 04/21/23 | FRI | 79% 21% 0% | 71% 29% 0% | 88% 13% 0% | 23 |
| 04/22/23 | SAT | 96% 4% 0% | 83% 17% 0% | 100% 0% 0% | 24 |
| 04/23/23 | SUN | 100% 0% 0% | 100% 0% 0% | 100% 0% 0% | 25 |
| 04/24/23 | MON | 83% 17% 0% | 71% 29% 0% | 92% 8% 0% | 26 |
| 04/25/23 | TUE | 71% 25% 4% | 71% 29% 0% | 75% 25% 0% | 27 |
| 04/26/23 | WED | 58% 42% 0% | 71% 29% 0% | 83% 17% 0% | 28 |
| 04/27/23 | THU | 88% 13% 0% | 88% 13% 0% | 92% 8% 0% | 29 |
| 04/28/23 | FRI | 83% 17% 0% | 92% 8% 0% | 92% 8% 0% | 30 |
| 04/29/23 | SAT | 75% 25% 0% | 54% 42% 4% | 79% 21% 0% | 31 |
| 04/30/23 | SUN | 100% 0% 0% | 100% 0% 0% | 100% 0% 0% | 32 |

| | | | |
|-------------------|----------------|----------------|----------------|
| ALL DAYS (APR-23) | 79% 21% 1% | 79% 20% 1% | 87% 12% 0% |
|-------------------|----------------|----------------|----------------|

START DATE

04/01/2023

TOTAL DAYS

30

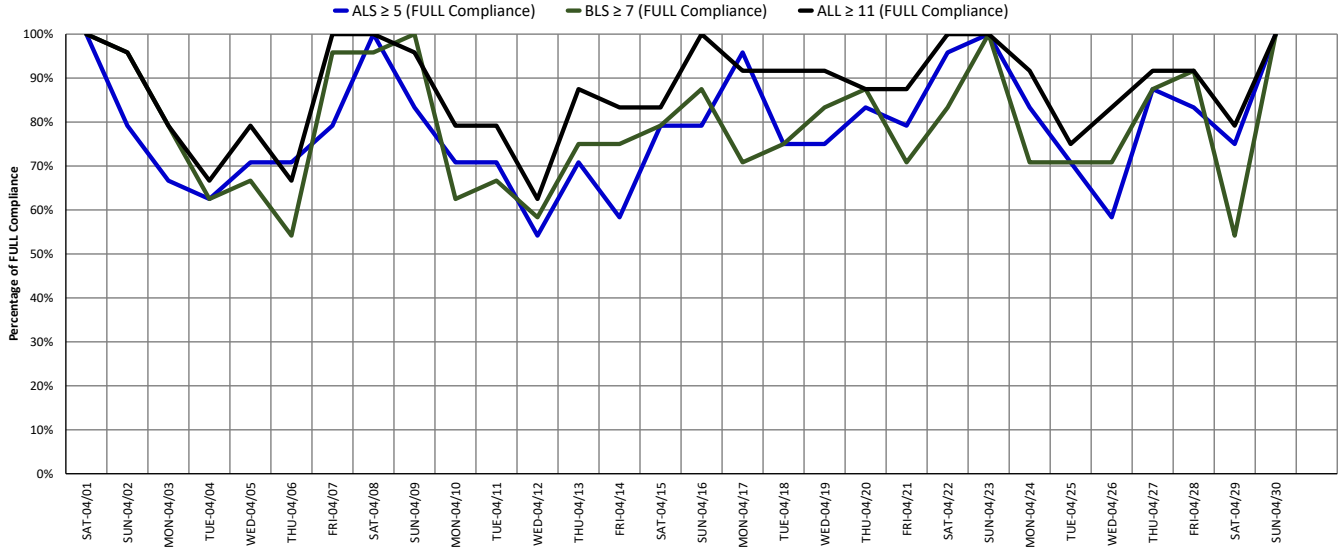
END DATE

04/30/2023

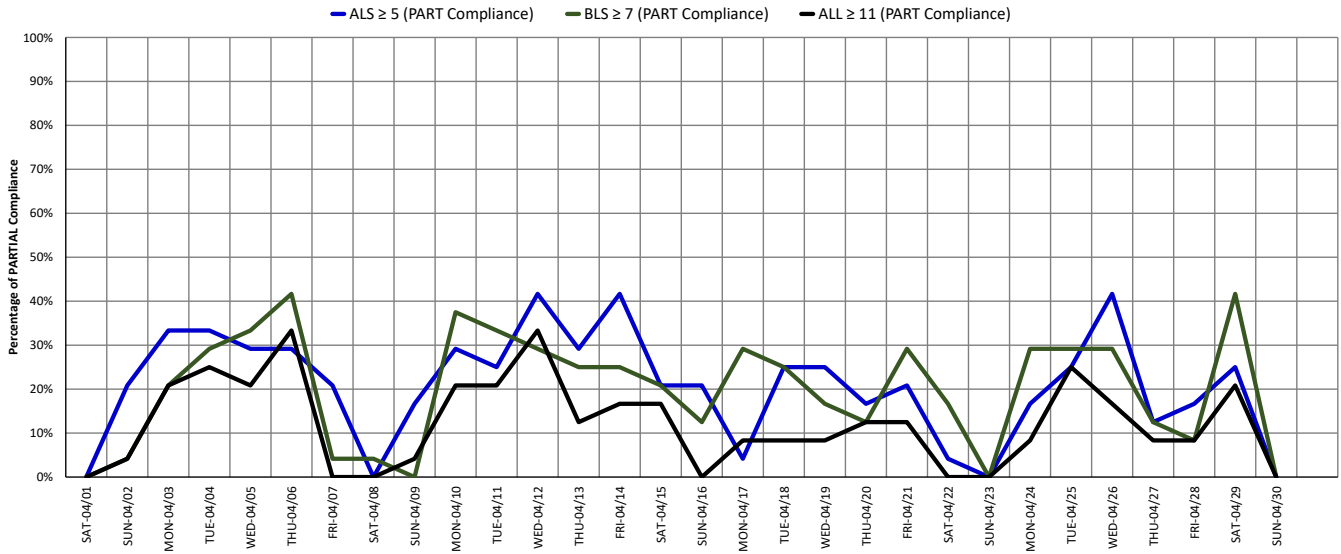
Raw Data Error: 0 HRS (0.00%)

DISTRICT OF COLUMBIA FIRE AND EMS DEPARTMENT

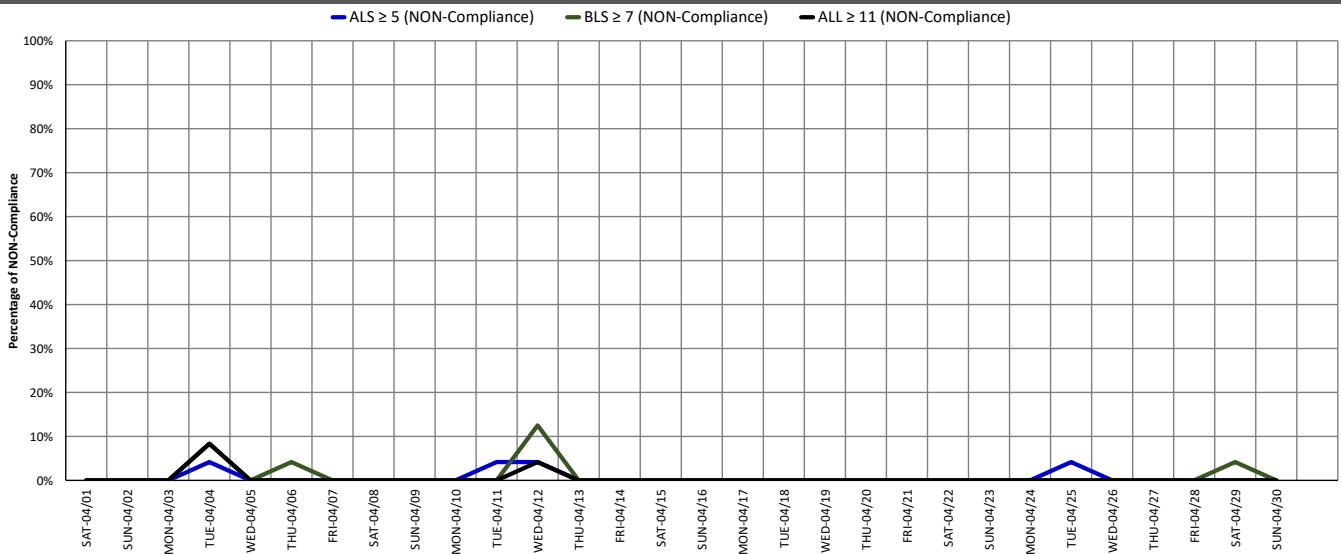
% of Transport Unit Availability FULL Compliance: ALL DAYS (APR-23)



% of Transport Unit Availability PARTIAL Compliance: ALL DAYS (APR-23)

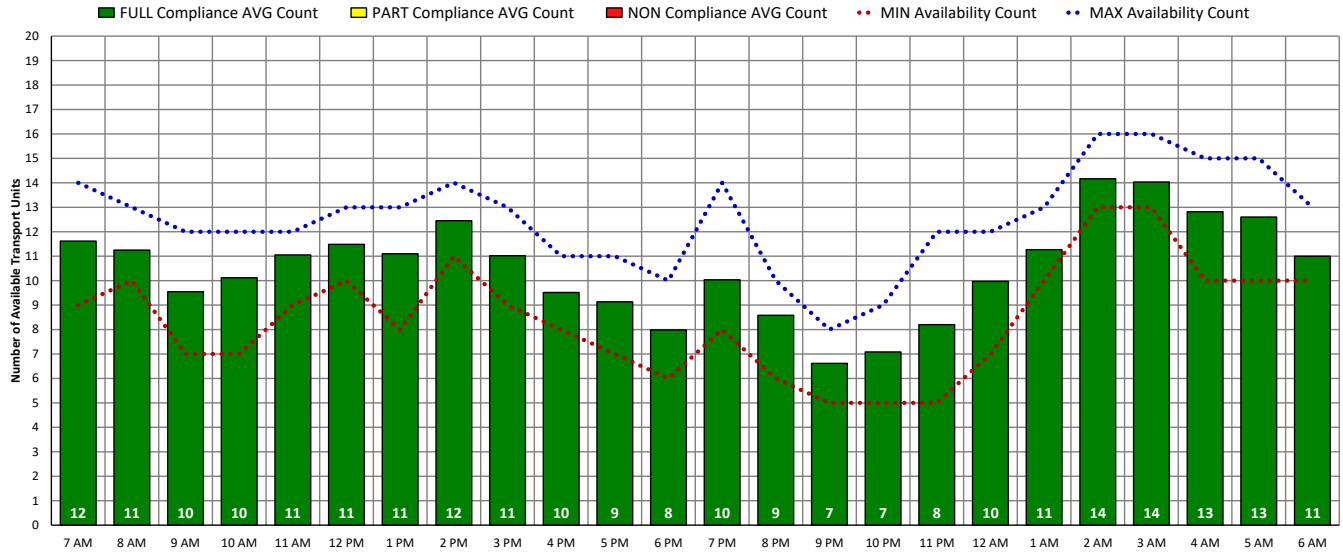


% of Transport Unit Availability NON-Compliance: ALL DAYS (APR-23)

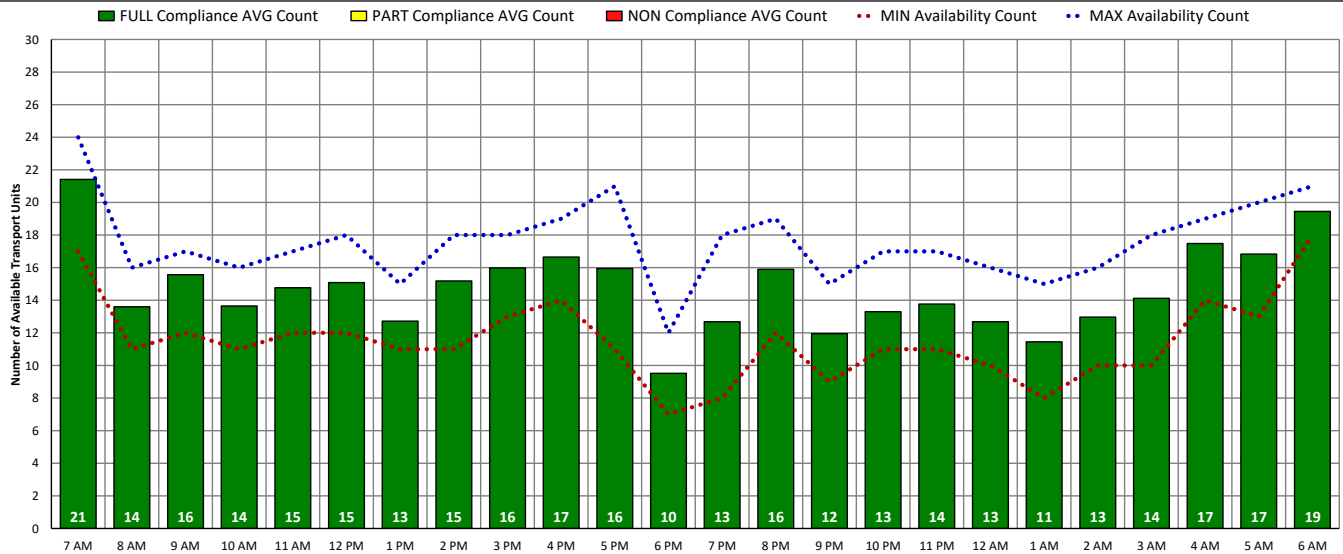


DISTRICT OF COLUMBIA FIRE AND EMS DEPARTMENT

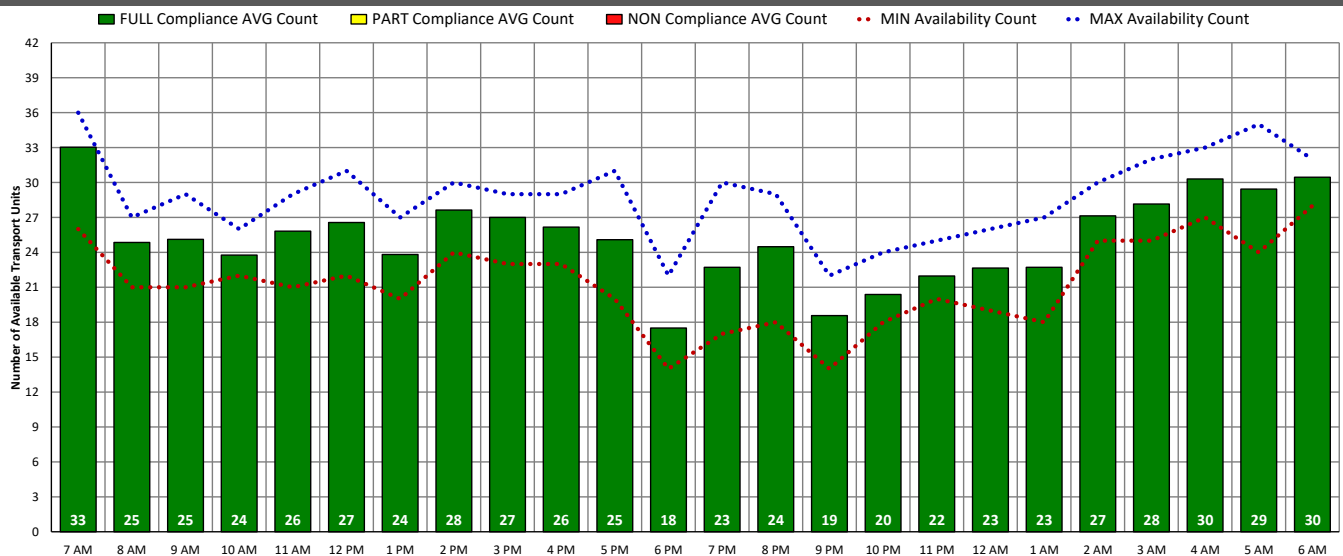
ALS Transport Unit Availability Compliance (SAT – 04/01/23)



BLS Transport Unit Availability Compliance (SAT – 04/01/23)

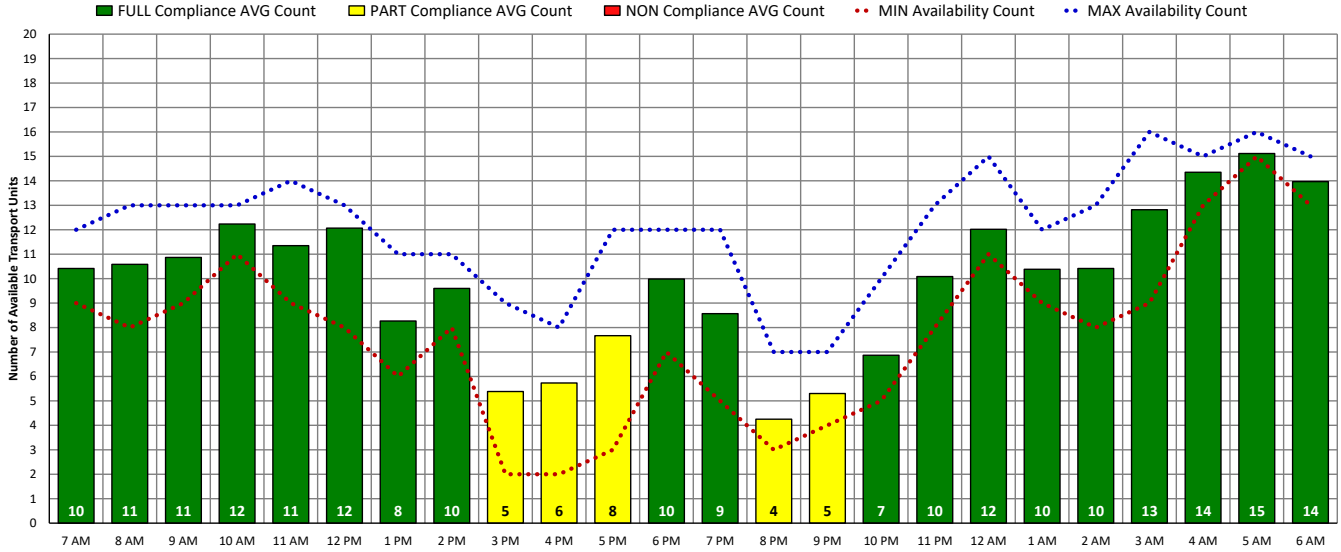


ALL Transport Unit Availability Compliance (SAT – 04/01/23)

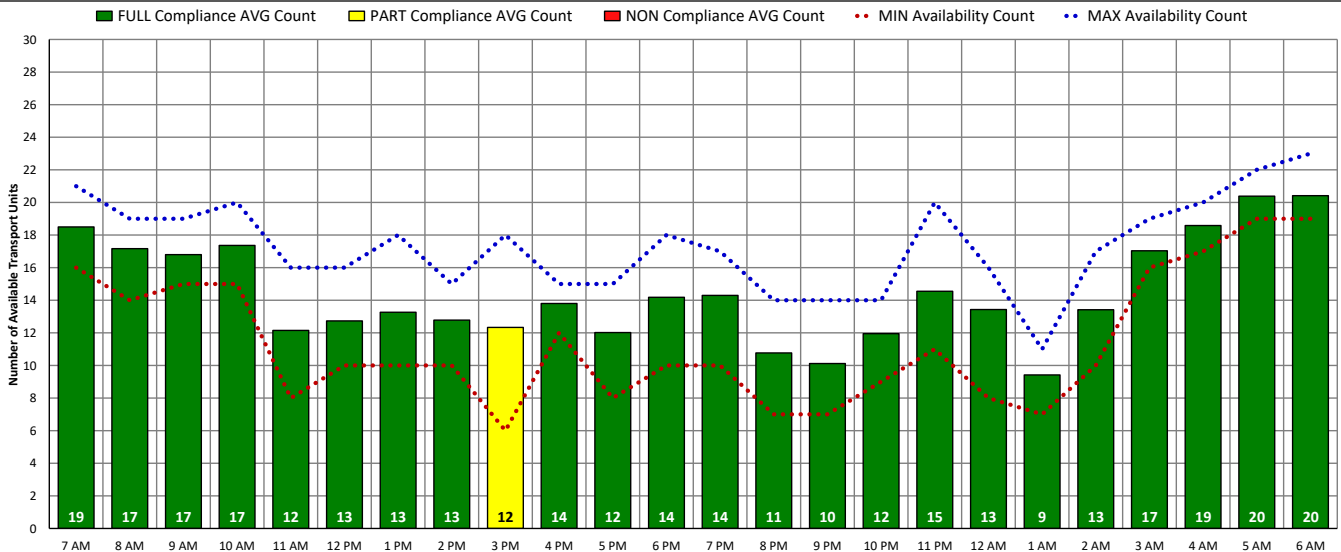


DISTRICT OF COLUMBIA FIRE AND EMS DEPARTMENT

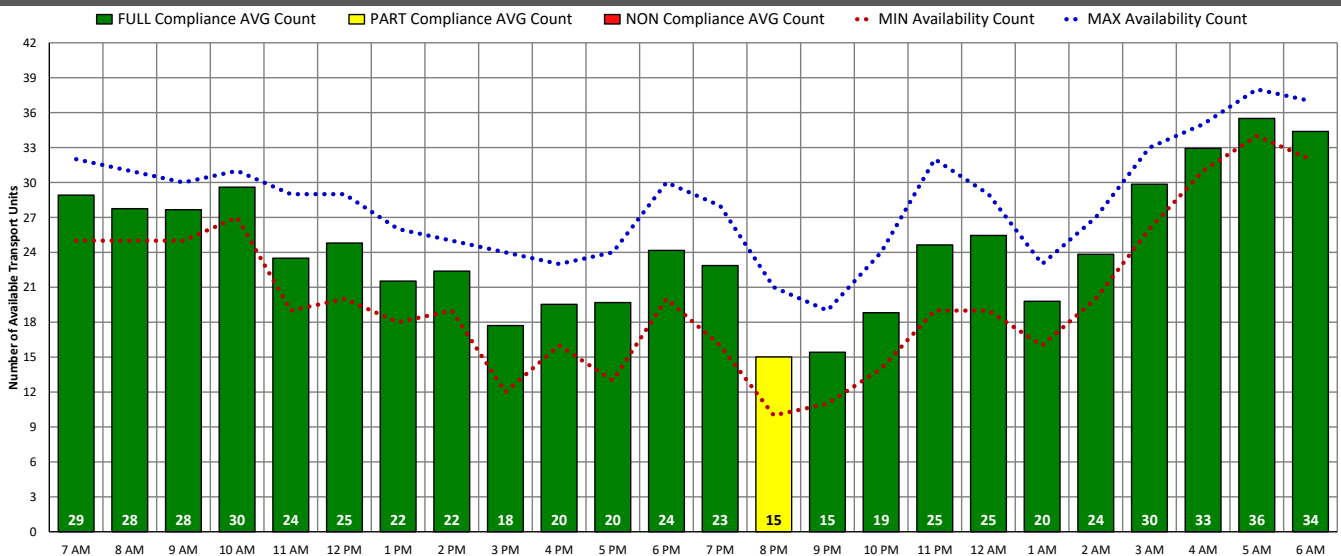
ALS Transport Unit Availability Compliance (SUN – 04/02/23)



BLS Transport Unit Availability Compliance (SUN – 04/02/23)

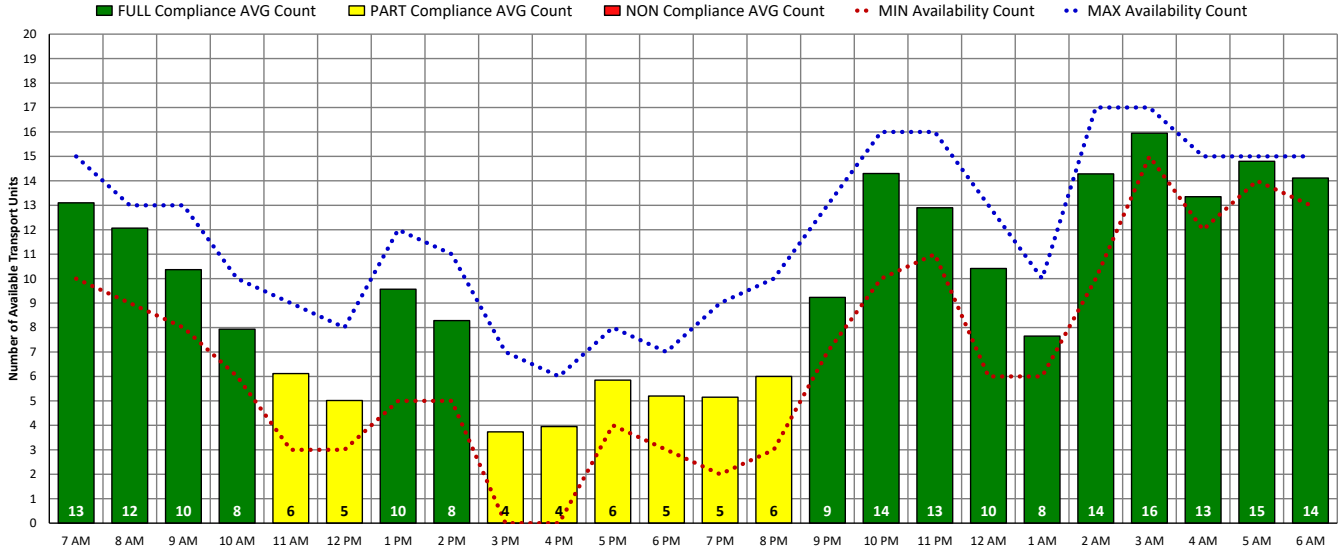


ALL Transport Unit Availability Compliance (SUN – 04/02/23)

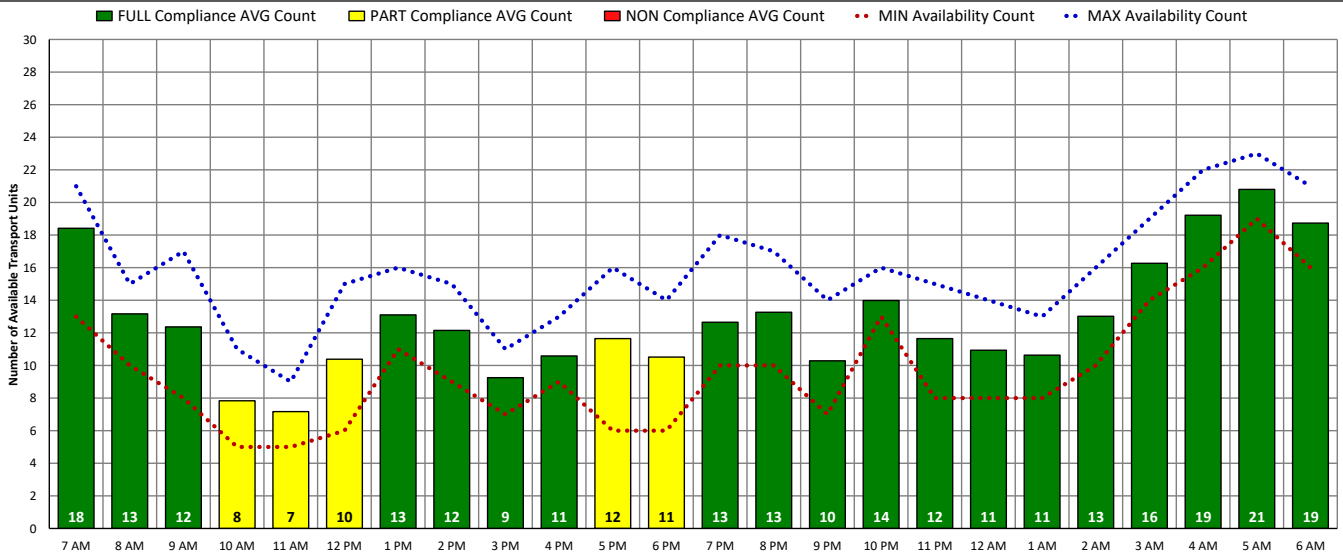


DISTRICT OF COLUMBIA FIRE AND EMS DEPARTMENT

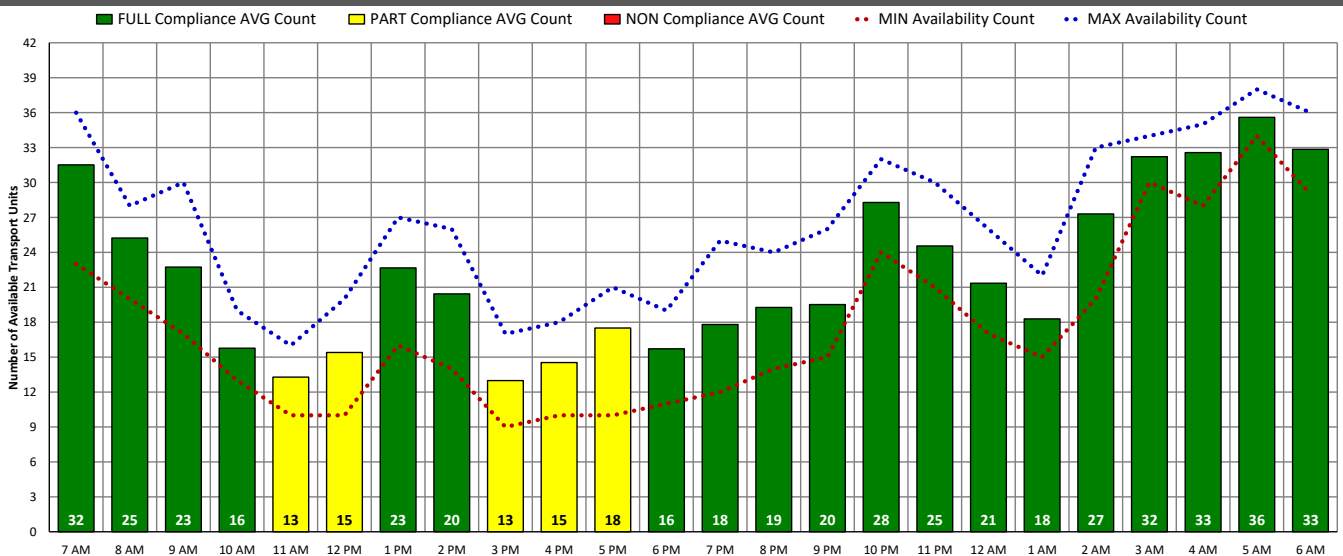
ALS Transport Unit Availability Compliance (MON – 04/03/23)



BLS Transport Unit Availability Compliance (MON – 04/03/23)

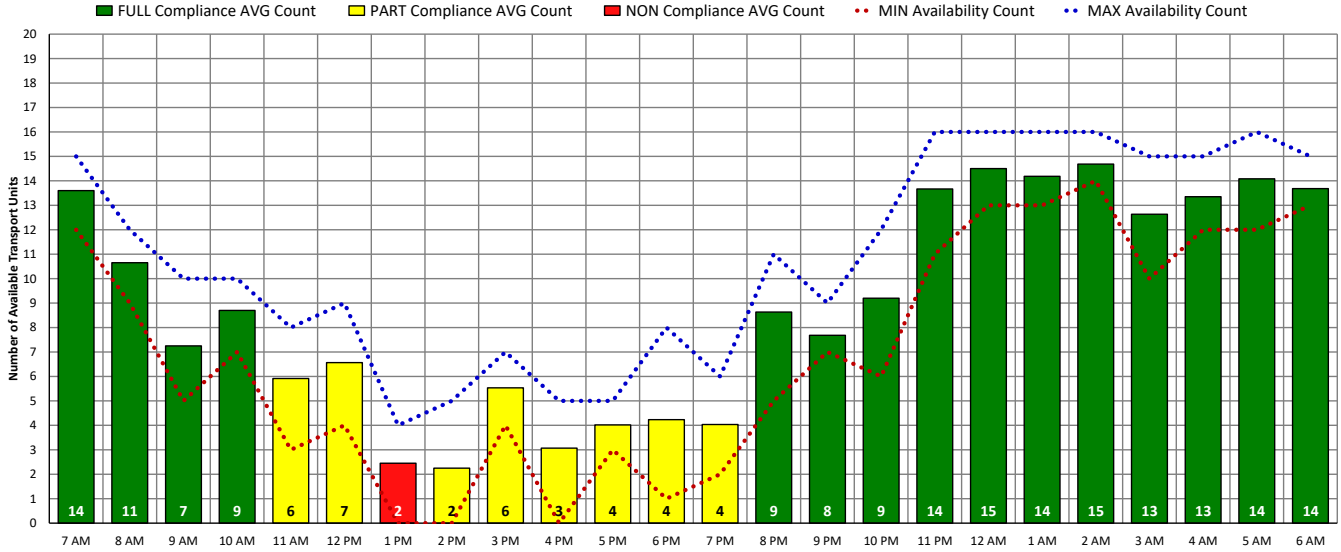


ALL Transport Unit Availability Compliance (MON – 04/03/23)

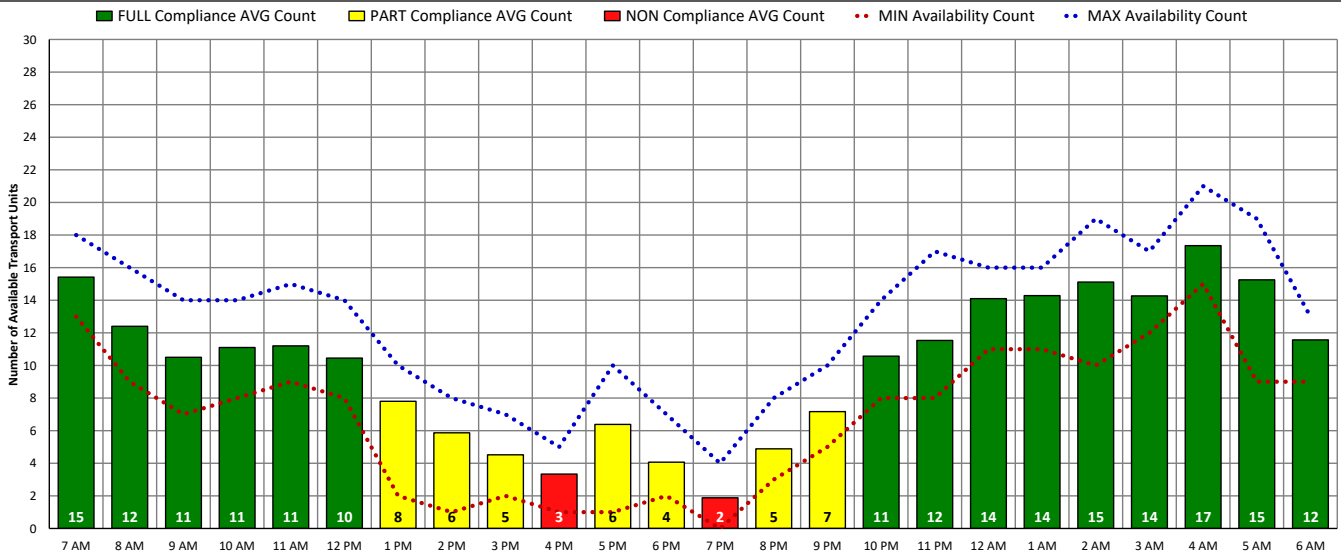


DISTRICT OF COLUMBIA FIRE AND EMS DEPARTMENT

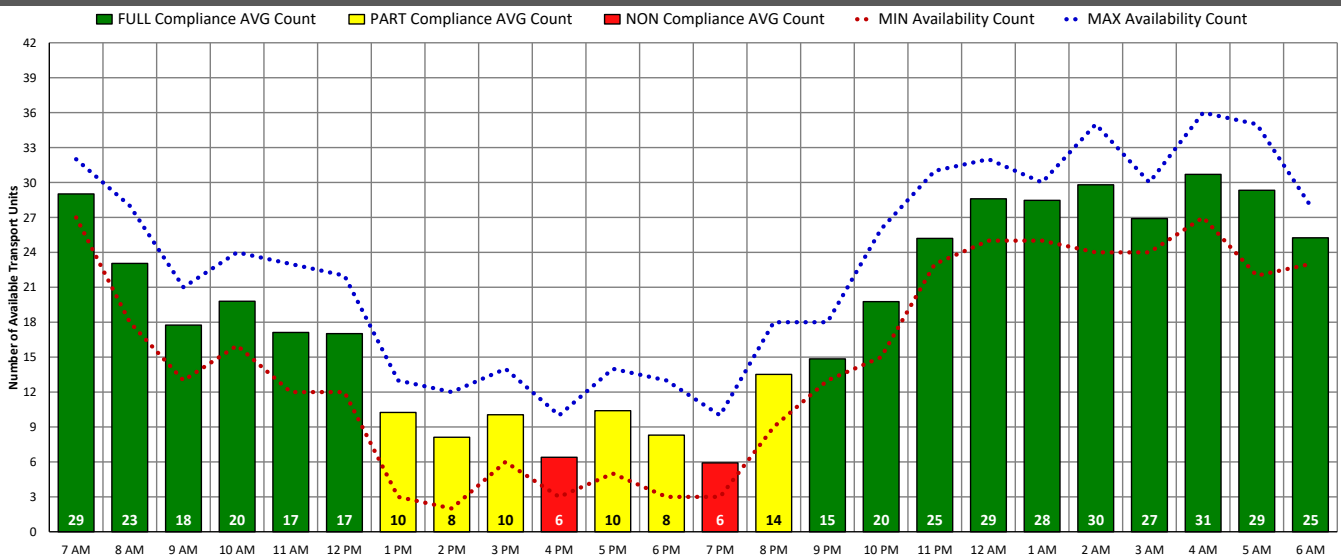
ALS Transport Unit Availability Compliance (TUE – 04/04/23)



BLS Transport Unit Availability Compliance (TUE – 04/04/23)

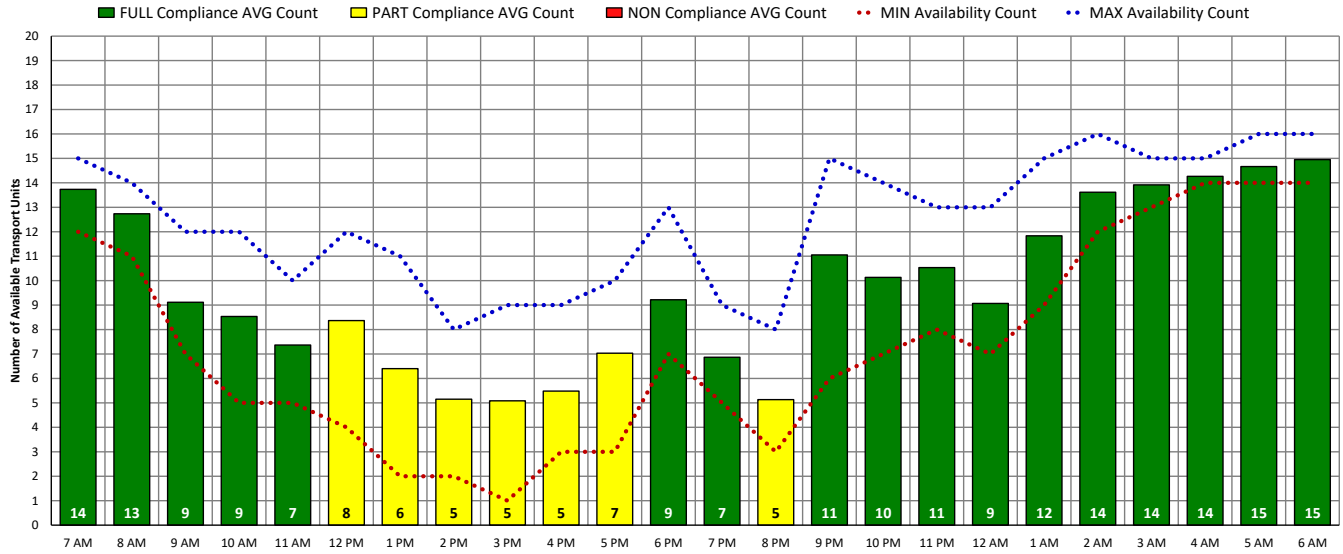


ALL Transport Unit Availability Compliance (TUE – 04/04/23)

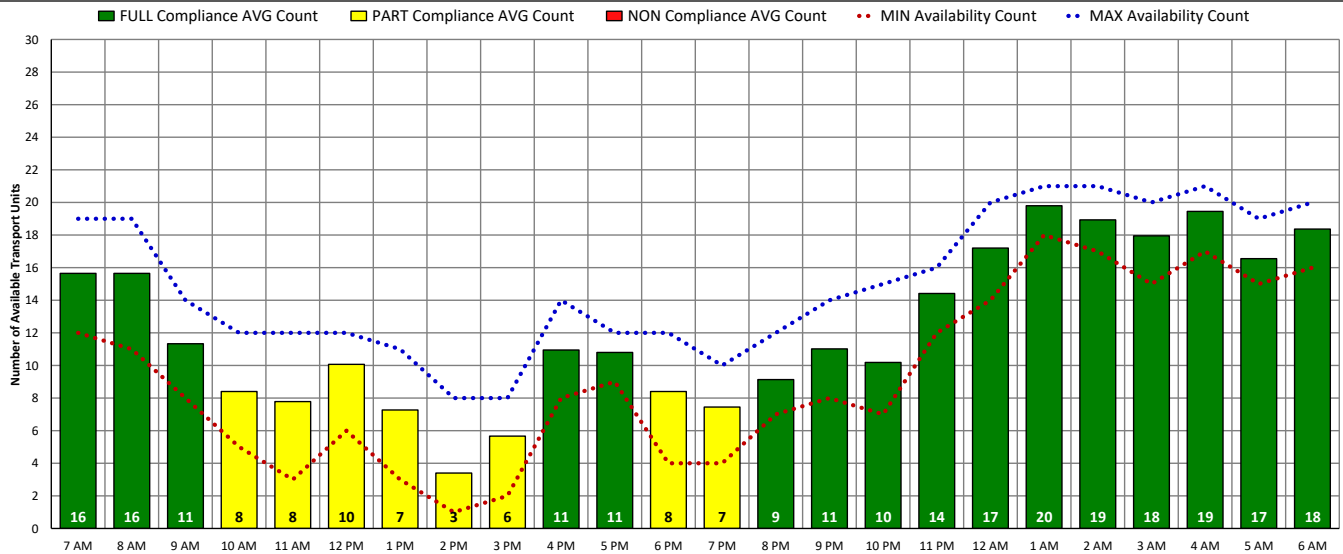


DISTRICT OF COLUMBIA FIRE AND EMS DEPARTMENT

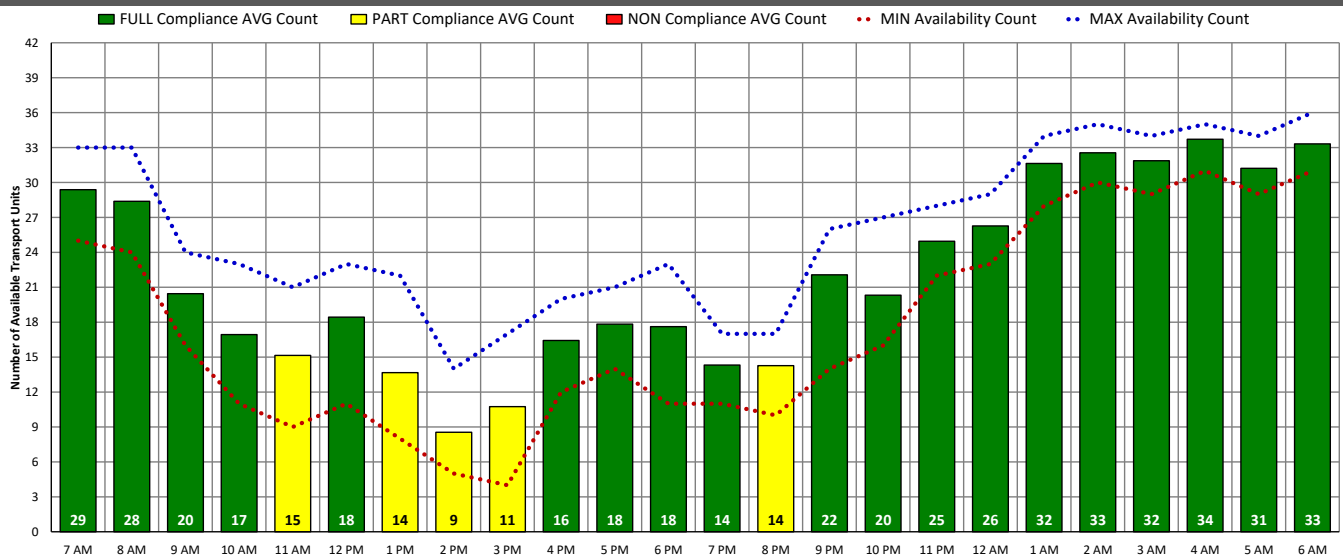
ALS Transport Unit Availability Compliance (WED – 04/05/23)



BLS Transport Unit Availability Compliance (WED – 04/05/23)

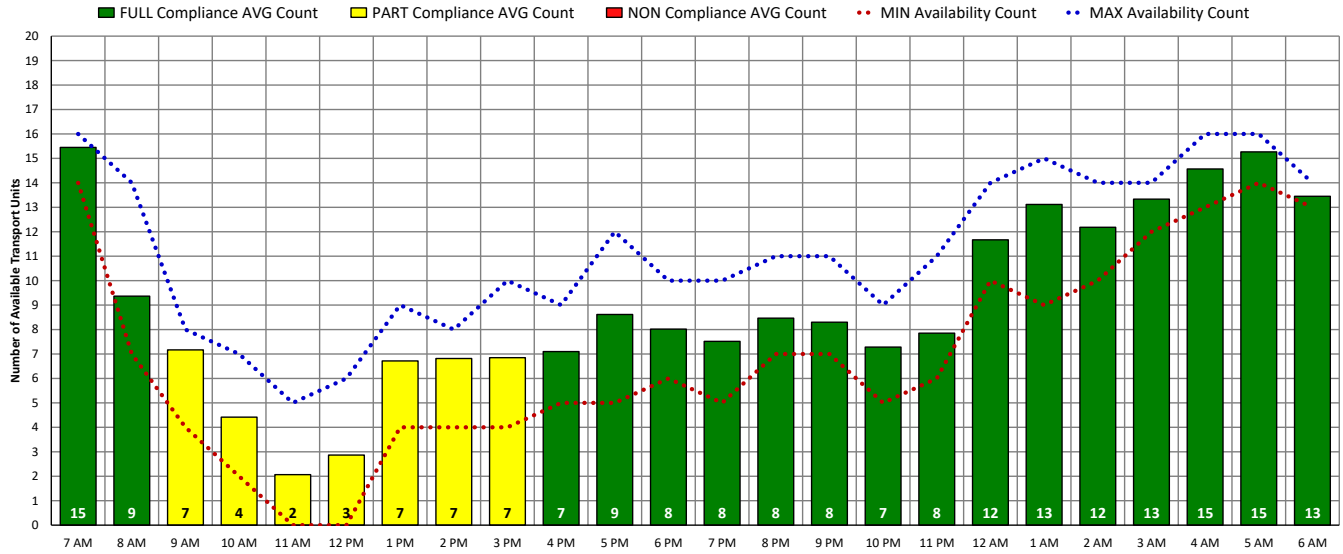


ALL Transport Unit Availability Compliance (WED – 04/05/23)

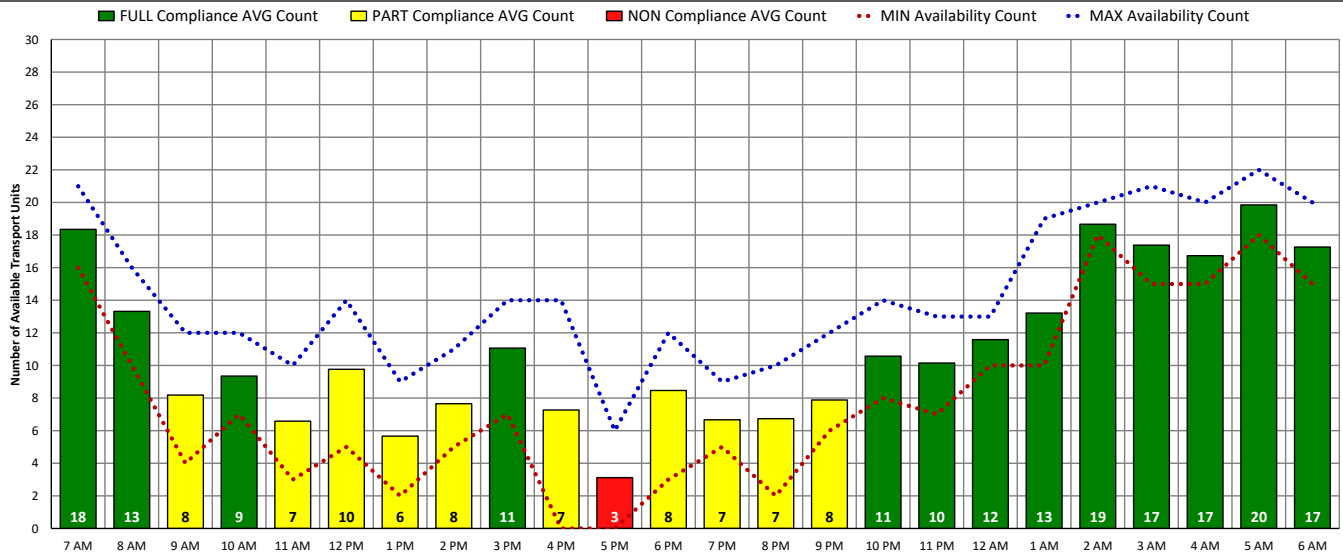


DISTRICT OF COLUMBIA FIRE AND EMS DEPARTMENT

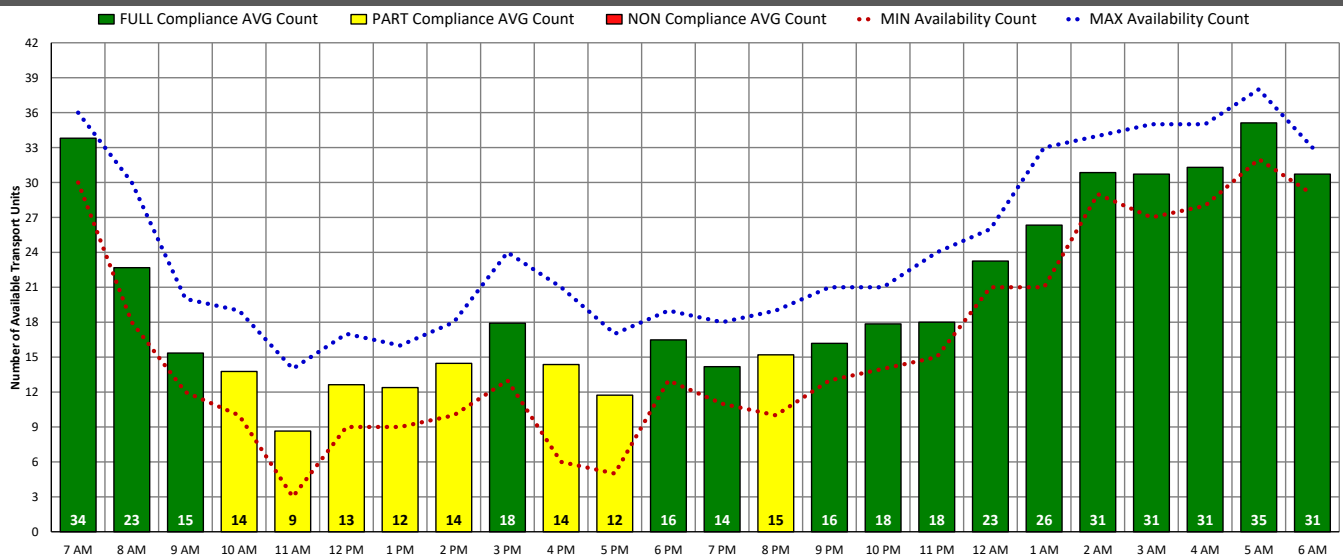
ALS Transport Unit Availability Compliance (THU – 04/06/23)



BLS Transport Unit Availability Compliance (THU – 04/06/23)

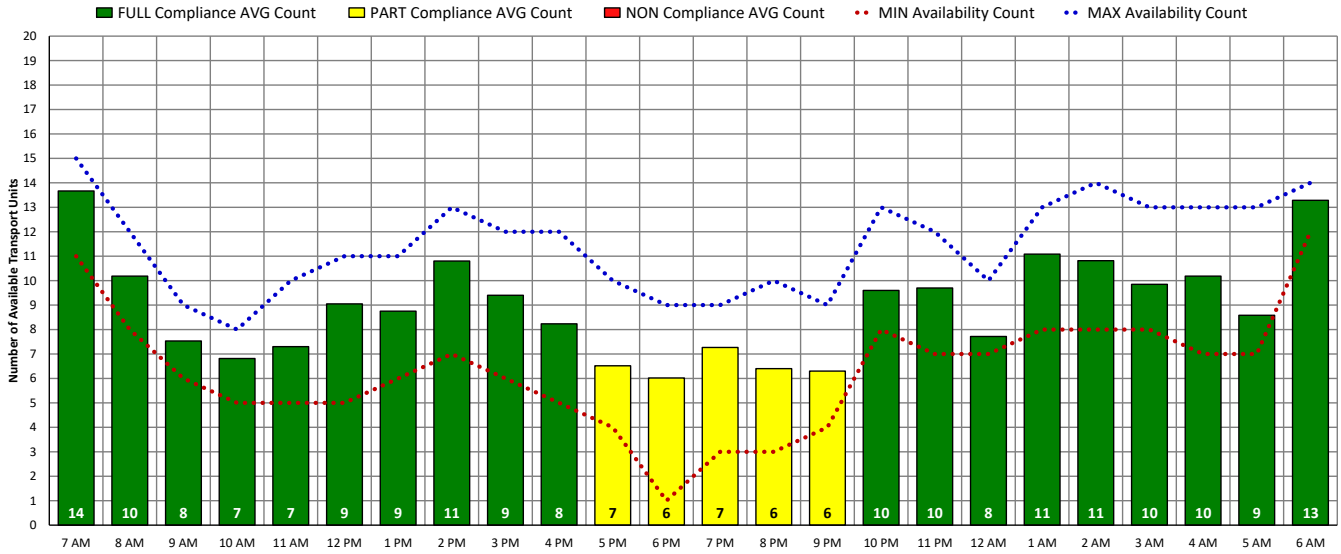


ALL Transport Unit Availability Compliance (THU – 04/06/23)

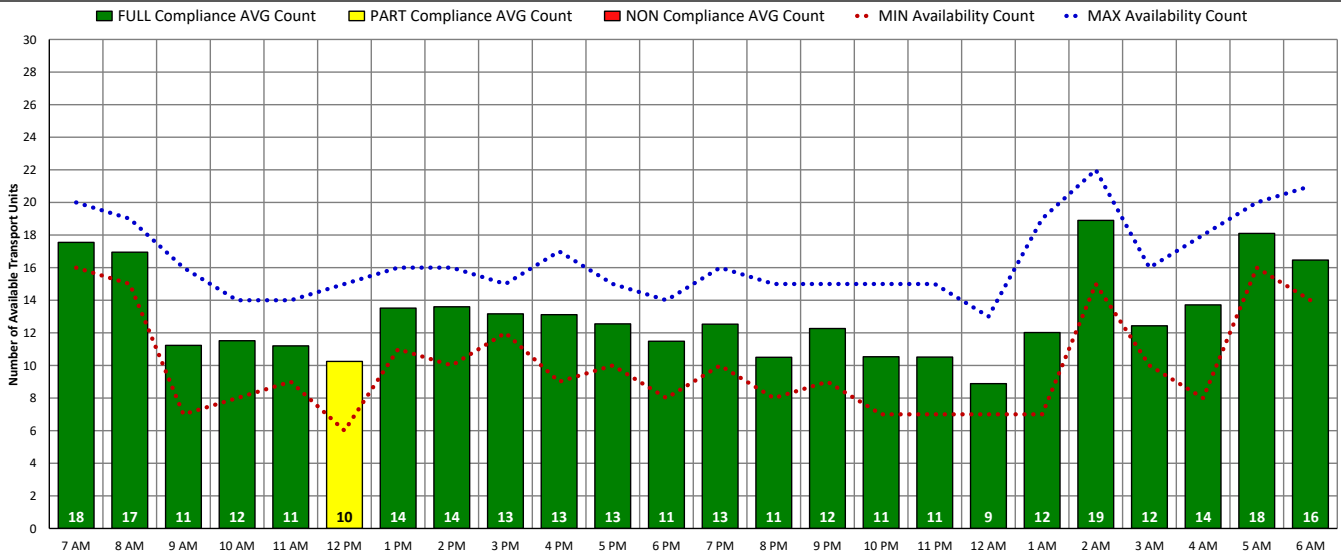


DISTRICT OF COLUMBIA FIRE AND EMS DEPARTMENT

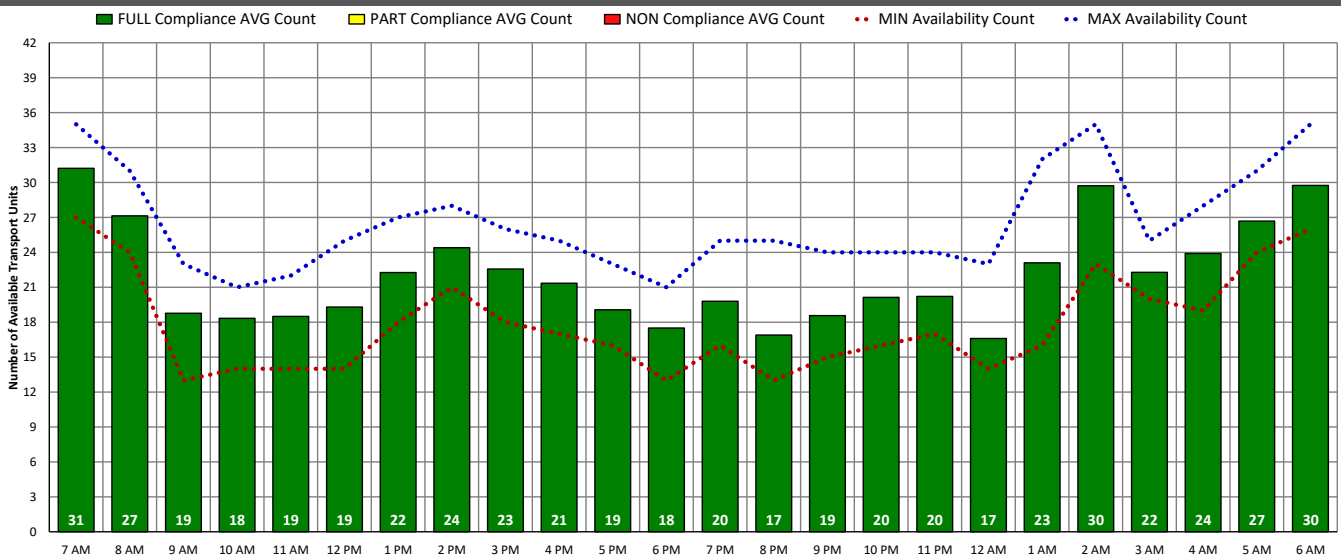
ALS Transport Unit Availability Compliance (FRI – 04/07/23)



BLS Transport Unit Availability Compliance (FRI – 04/07/23)

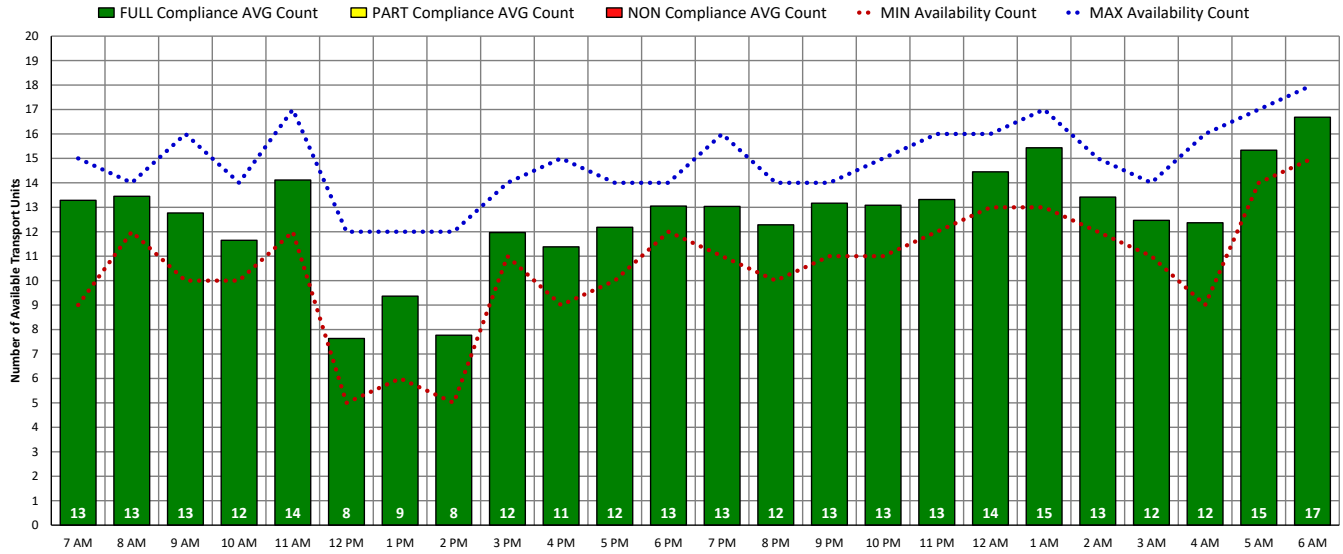


ALL Transport Unit Availability Compliance (FRI – 04/07/23)

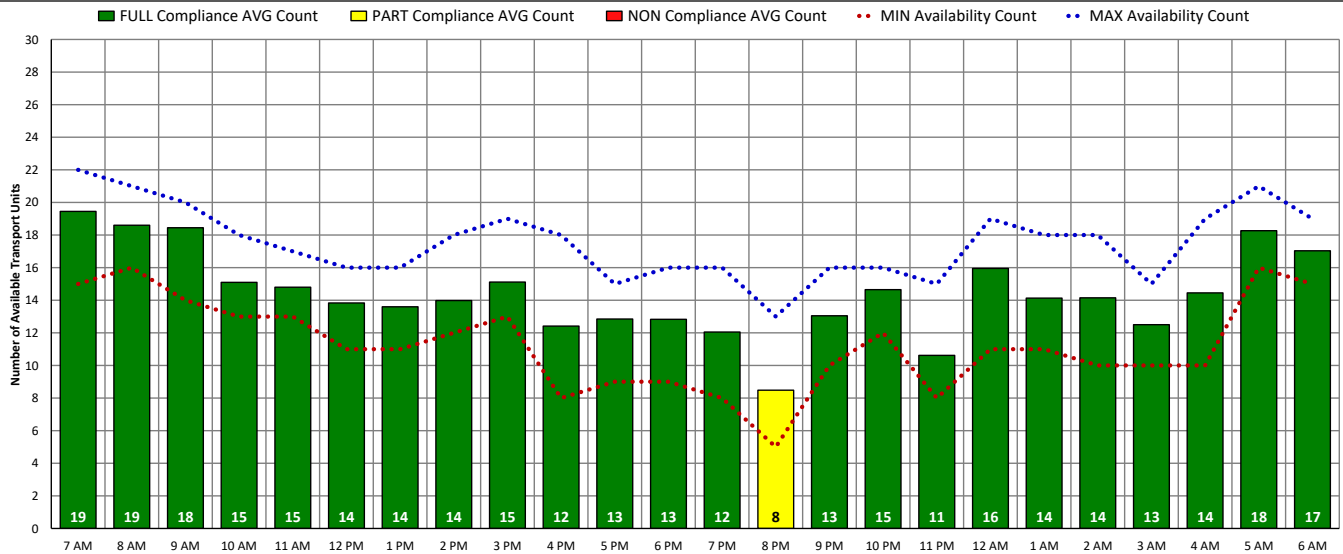


DISTRICT OF COLUMBIA FIRE AND EMS DEPARTMENT

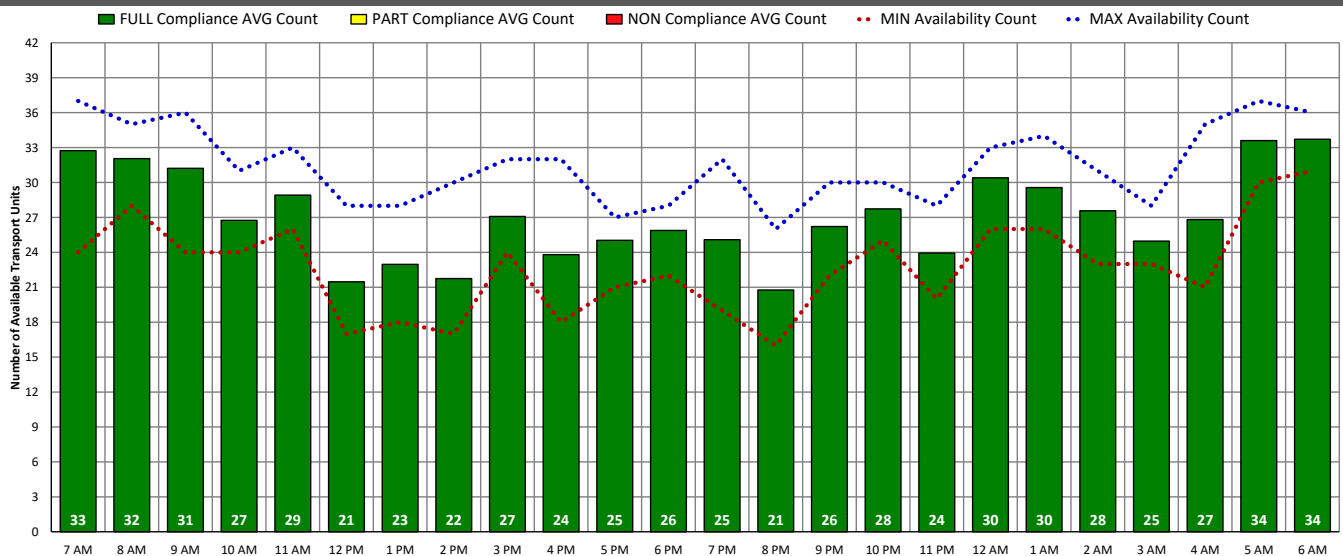
ALS Transport Unit Availability Compliance (SAT – 04/08/23)



BLS Transport Unit Availability Compliance (SAT – 04/08/23)

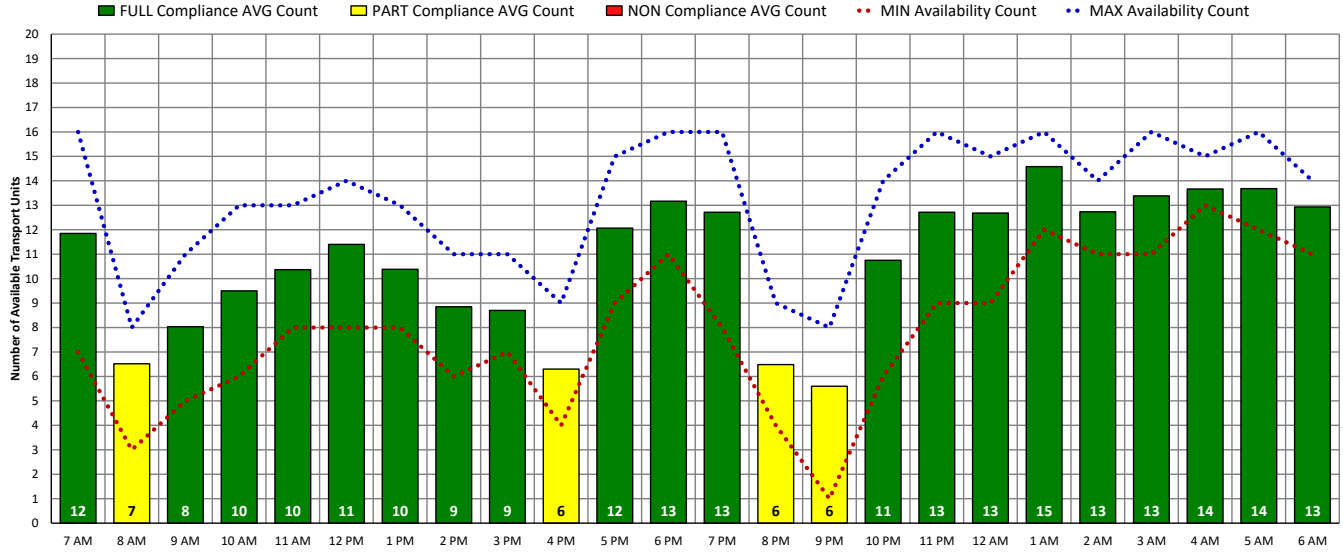


ALL Transport Unit Availability Compliance (SAT – 04/08/23)

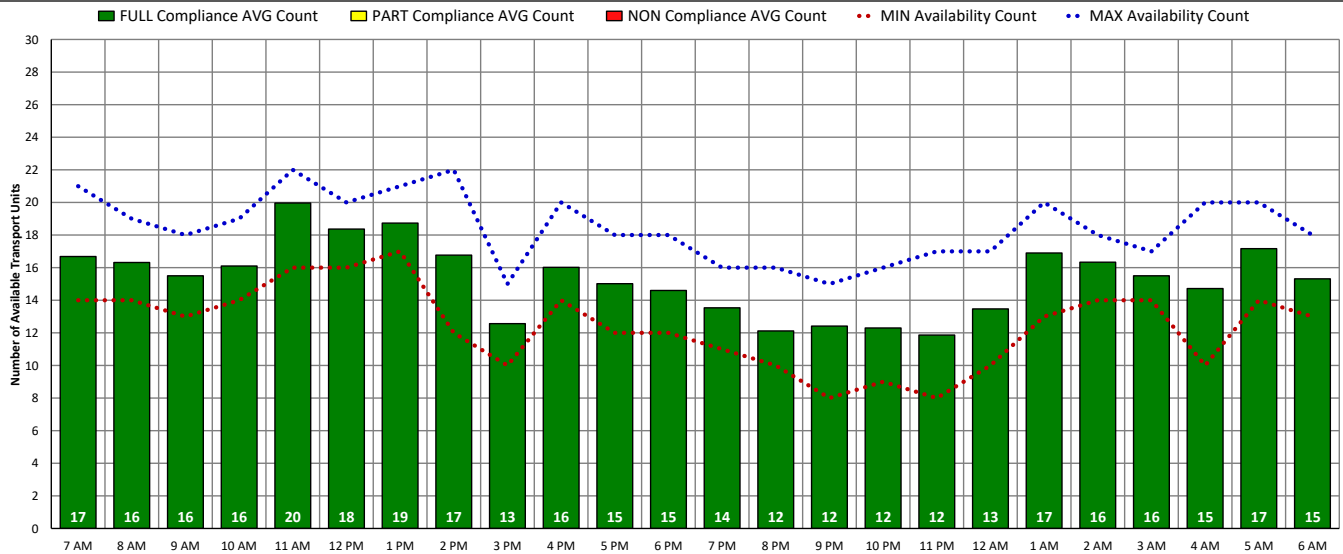


DISTRICT OF COLUMBIA FIRE AND EMS DEPARTMENT

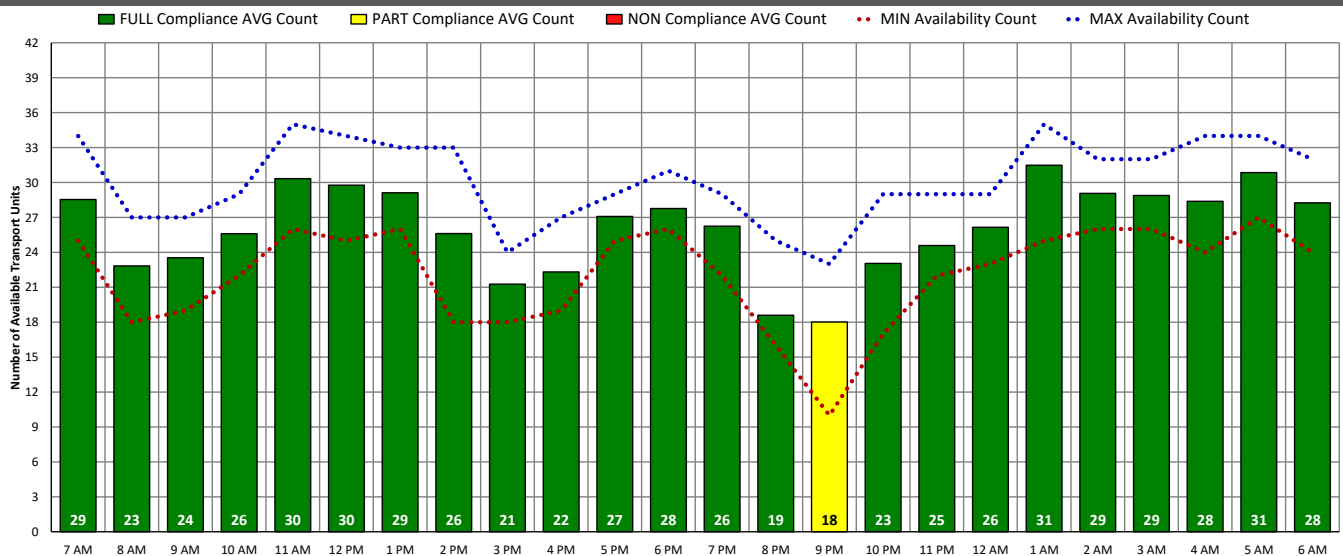
ALS Transport Unit Availability Compliance (SUN – 04/09/23)



BLS Transport Unit Availability Compliance (SUN – 04/09/23)

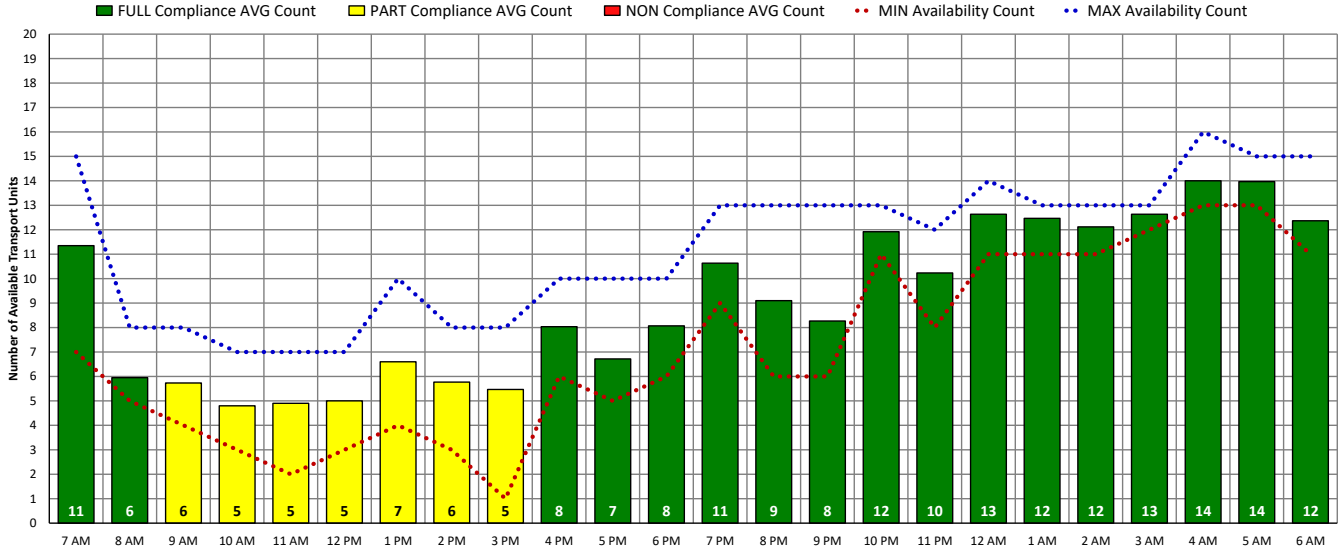


ALL Transport Unit Availability Compliance (SUN – 04/09/23)

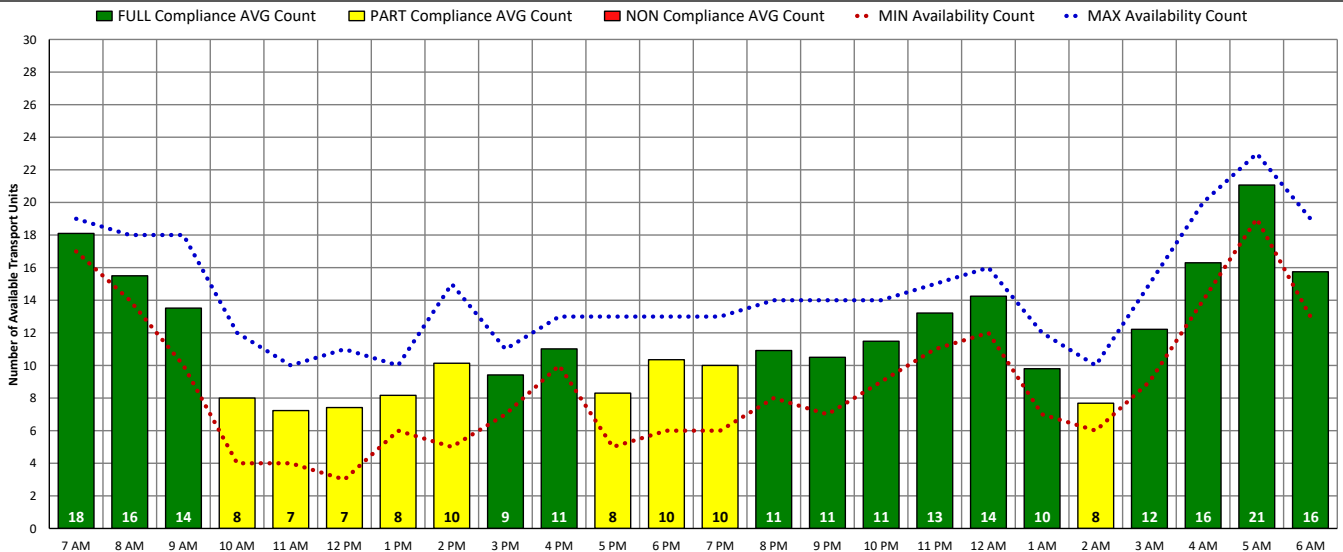


DISTRICT OF COLUMBIA FIRE AND EMS DEPARTMENT

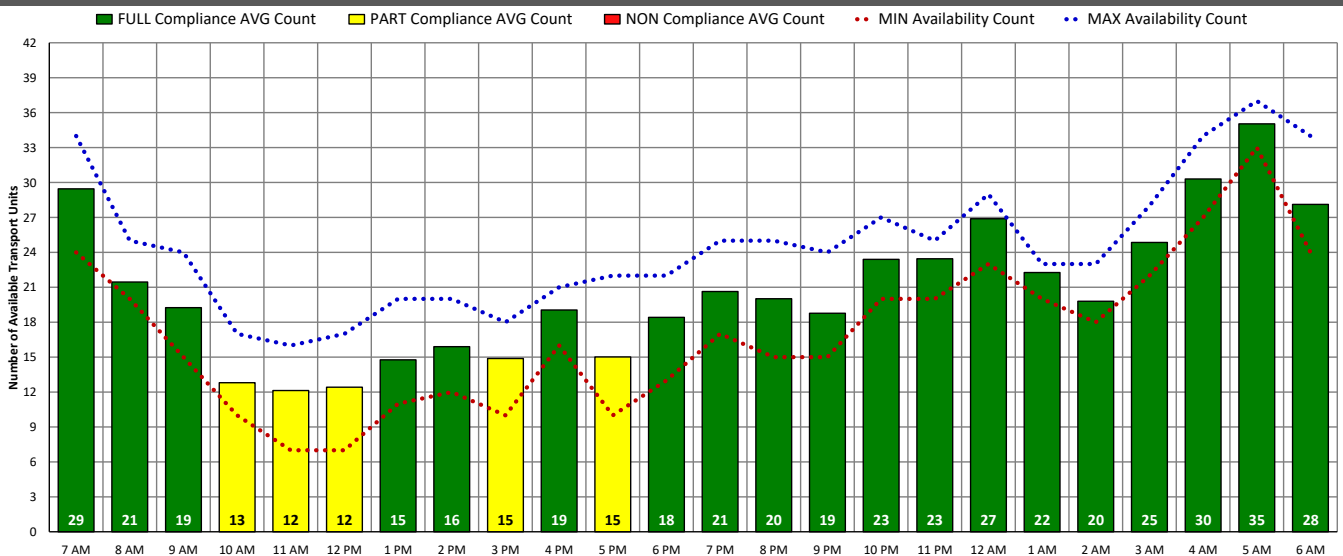
ALS Transport Unit Availability Compliance (MON – 04/10/23)



BLS Transport Unit Availability Compliance (MON – 04/10/23)

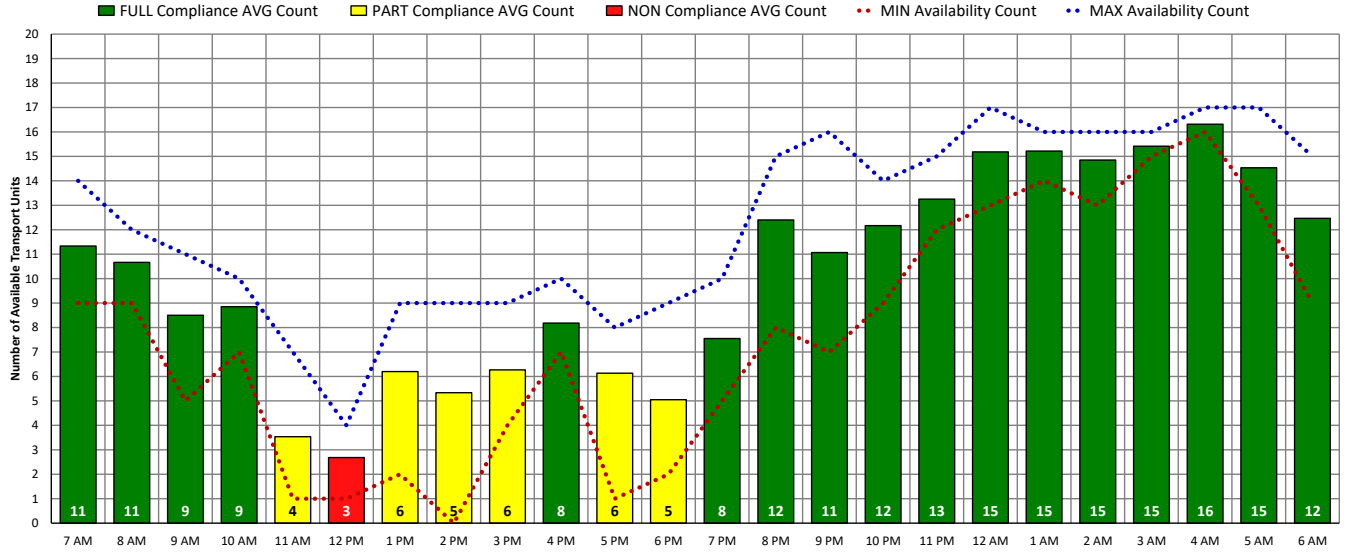


ALL Transport Unit Availability Compliance (MON – 04/10/23)

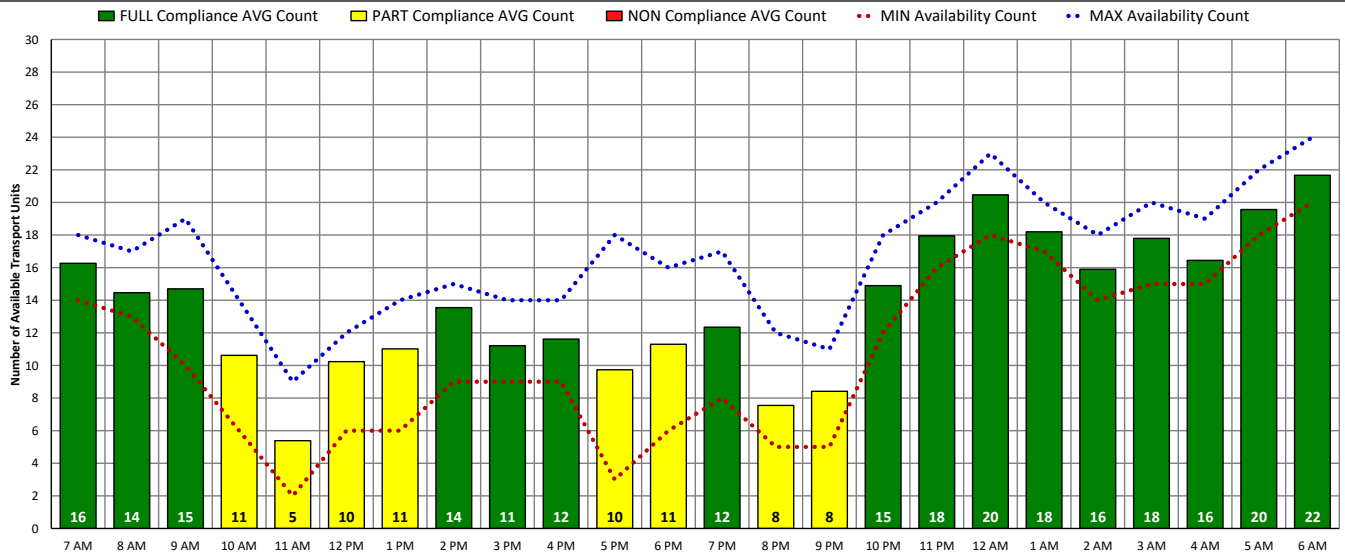


DISTRICT OF COLUMBIA FIRE AND EMS DEPARTMENT

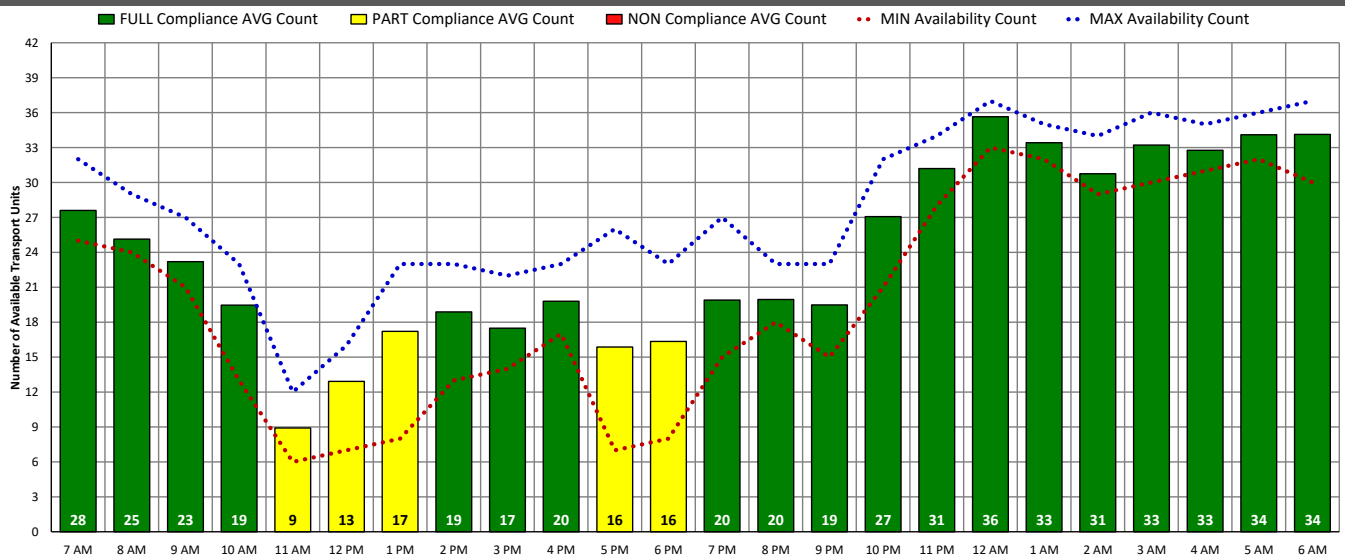
ALS Transport Unit Availability Compliance (TUE – 04/11/23)



BLS Transport Unit Availability Compliance (TUE – 04/11/23)

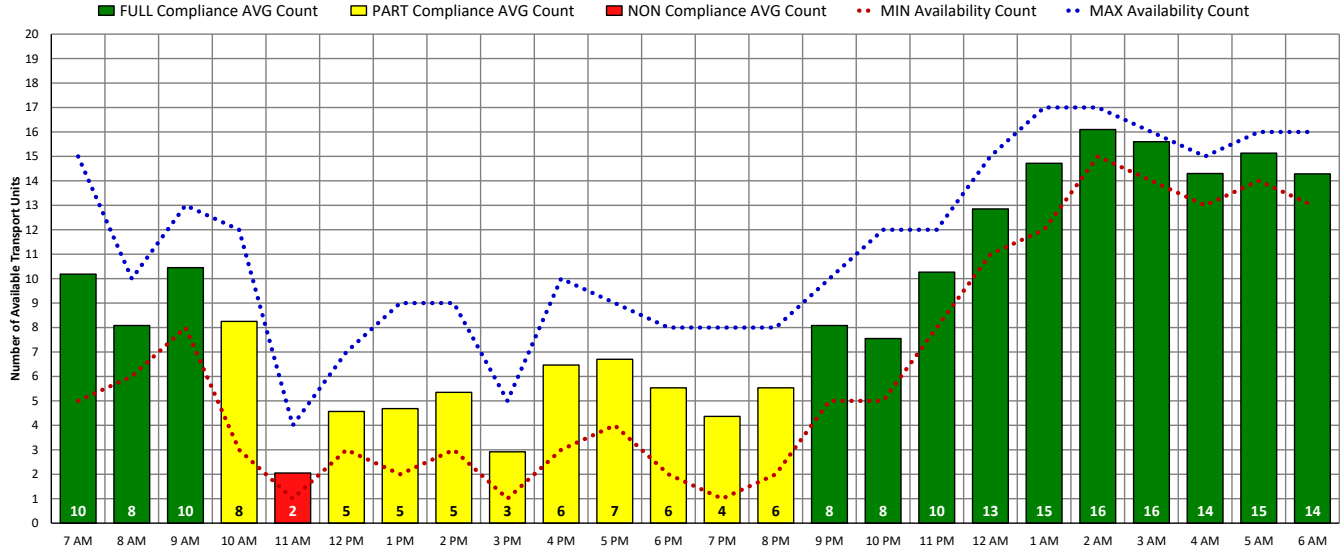


ALL Transport Unit Availability Compliance (TUE – 04/11/23)

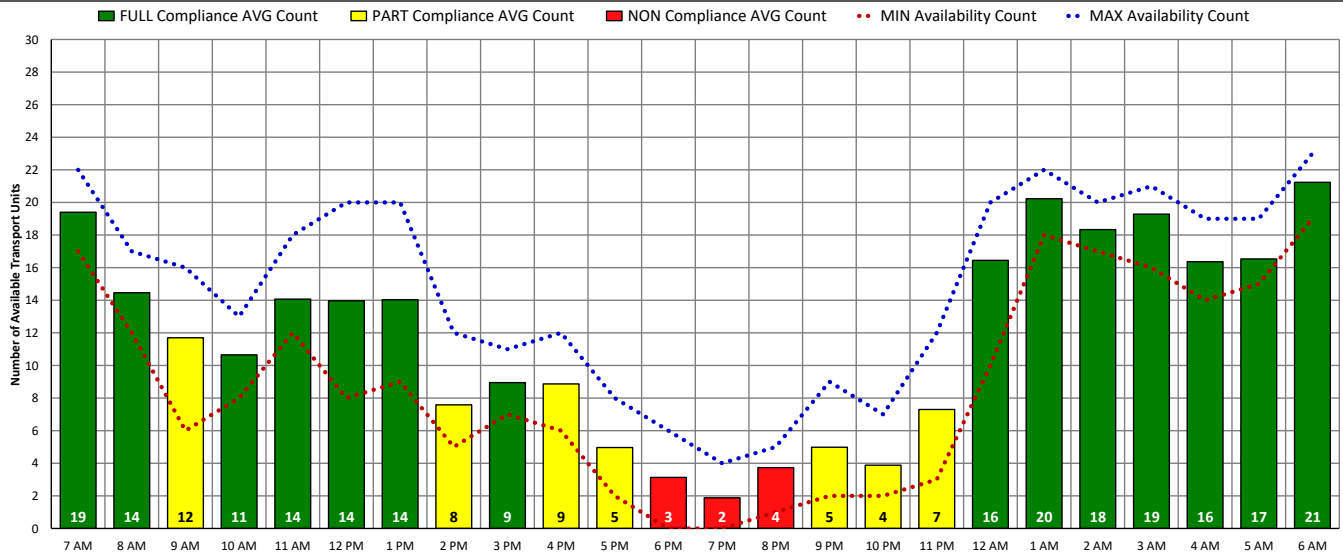


DISTRICT OF COLUMBIA FIRE AND EMS DEPARTMENT

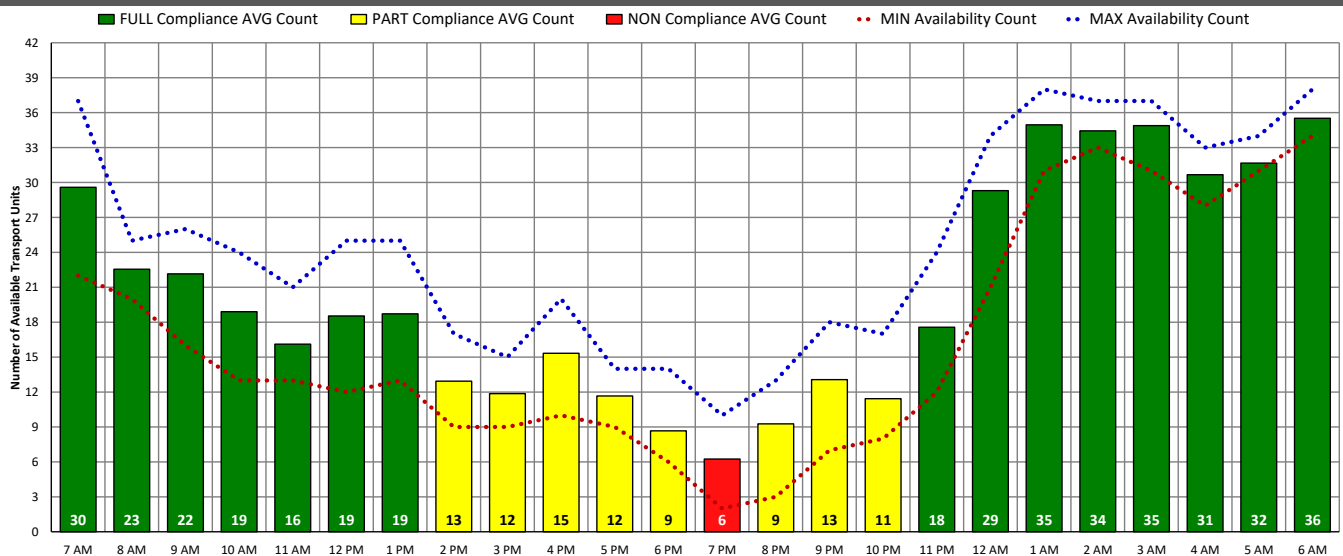
ALS Transport Unit Availability Compliance (WED – 04/12/23)



BLS Transport Unit Availability Compliance (WED – 04/12/23)

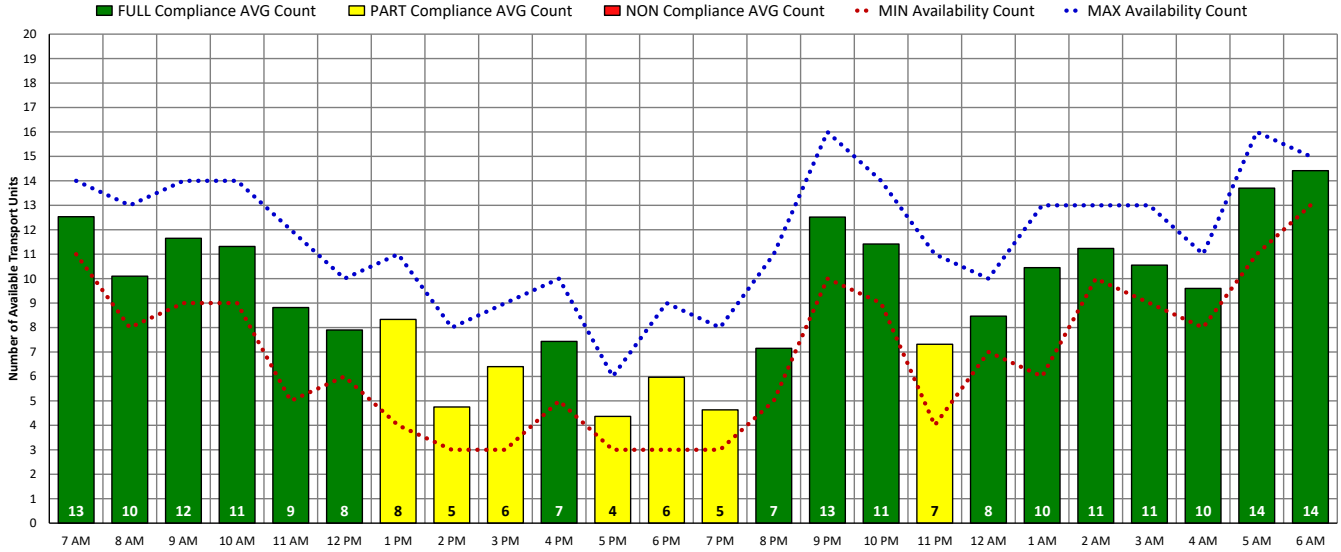


ALL Transport Unit Availability Compliance (WED – 04/12/23)

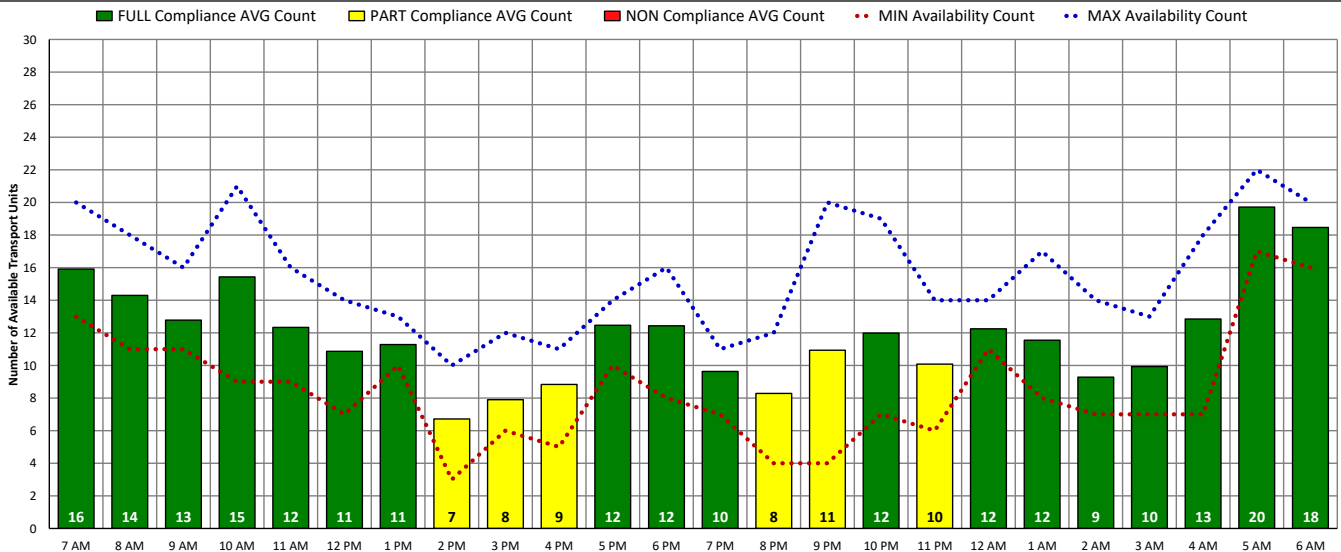


DISTRICT OF COLUMBIA FIRE AND EMS DEPARTMENT

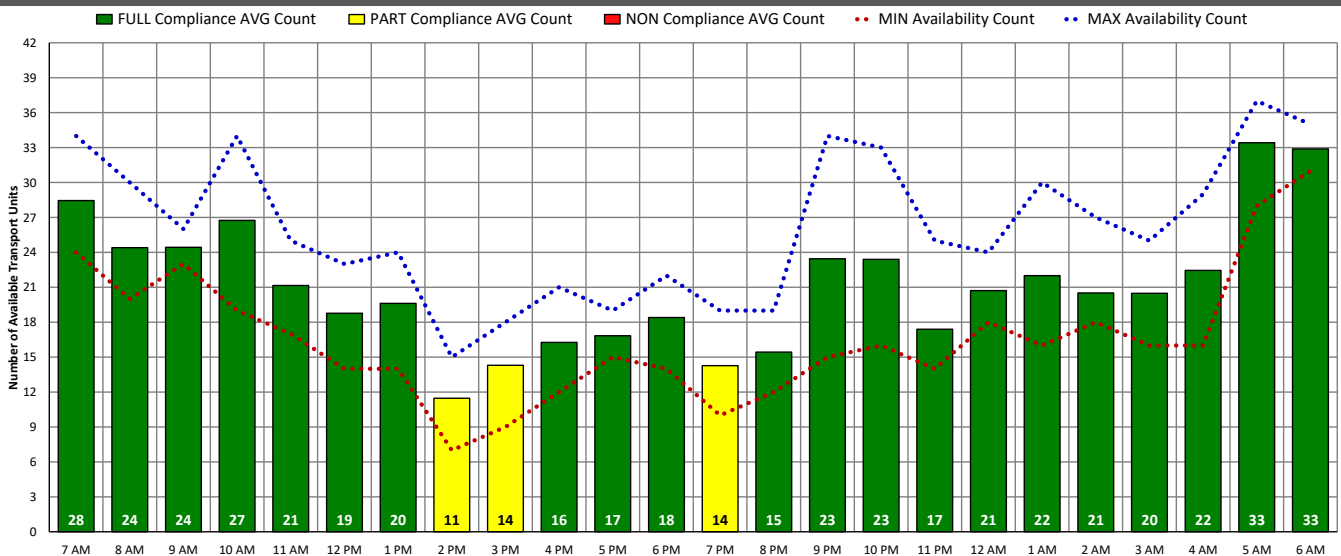
ALS Transport Unit Availability Compliance (THU – 04/13/23)



BLS Transport Unit Availability Compliance (THU – 04/13/23)

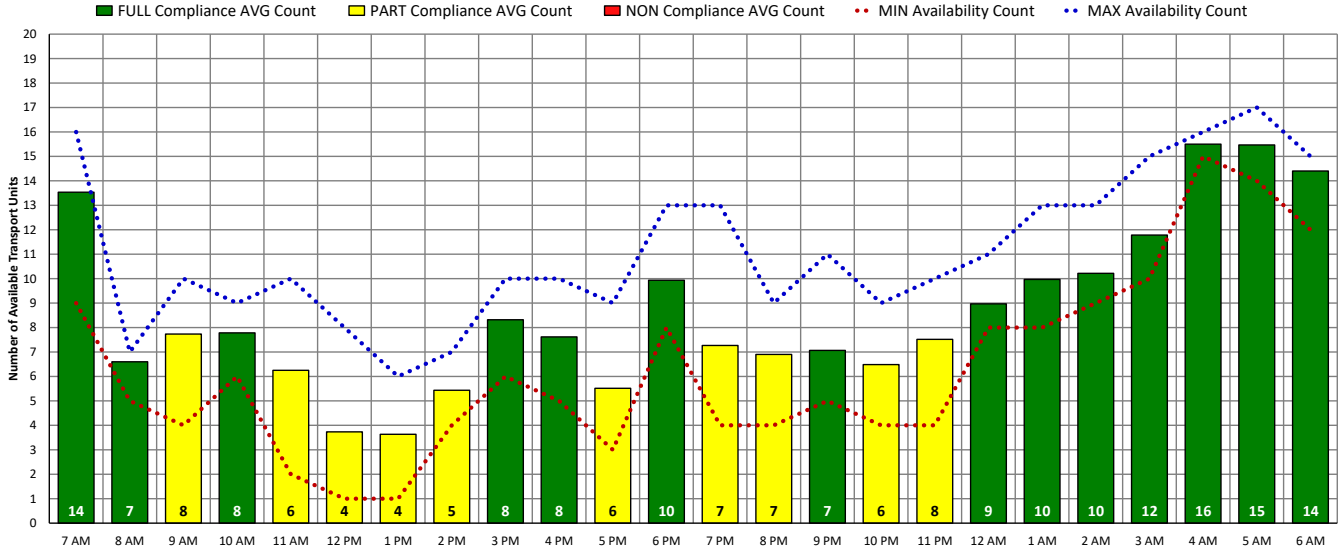


ALL Transport Unit Availability Compliance (THU – 04/13/23)

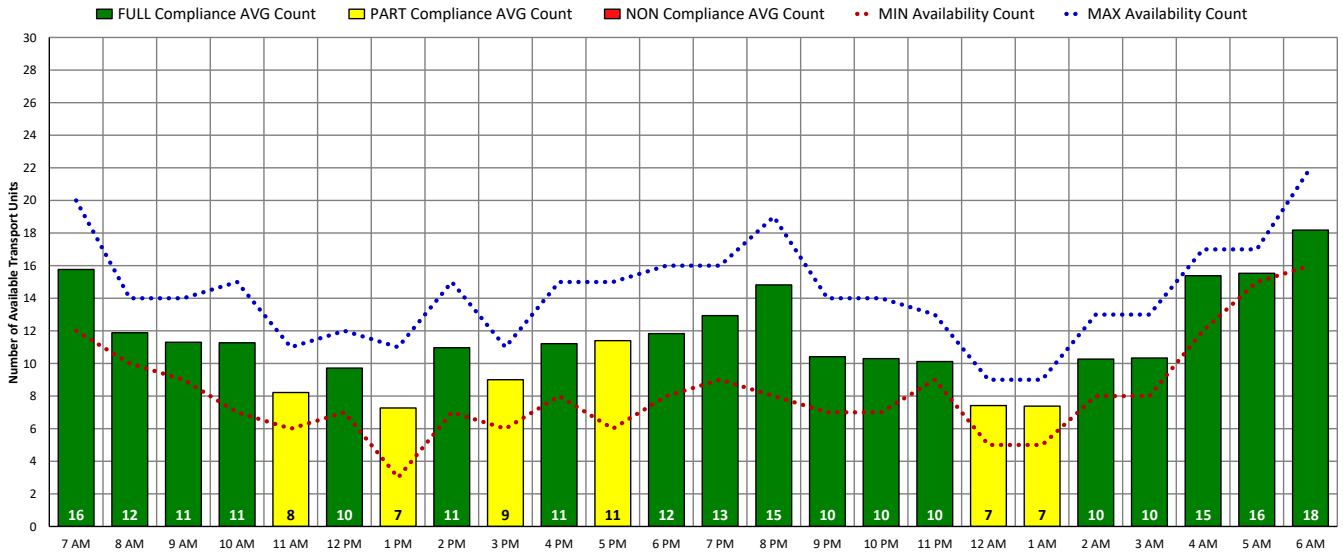


DISTRICT OF COLUMBIA FIRE AND EMS DEPARTMENT

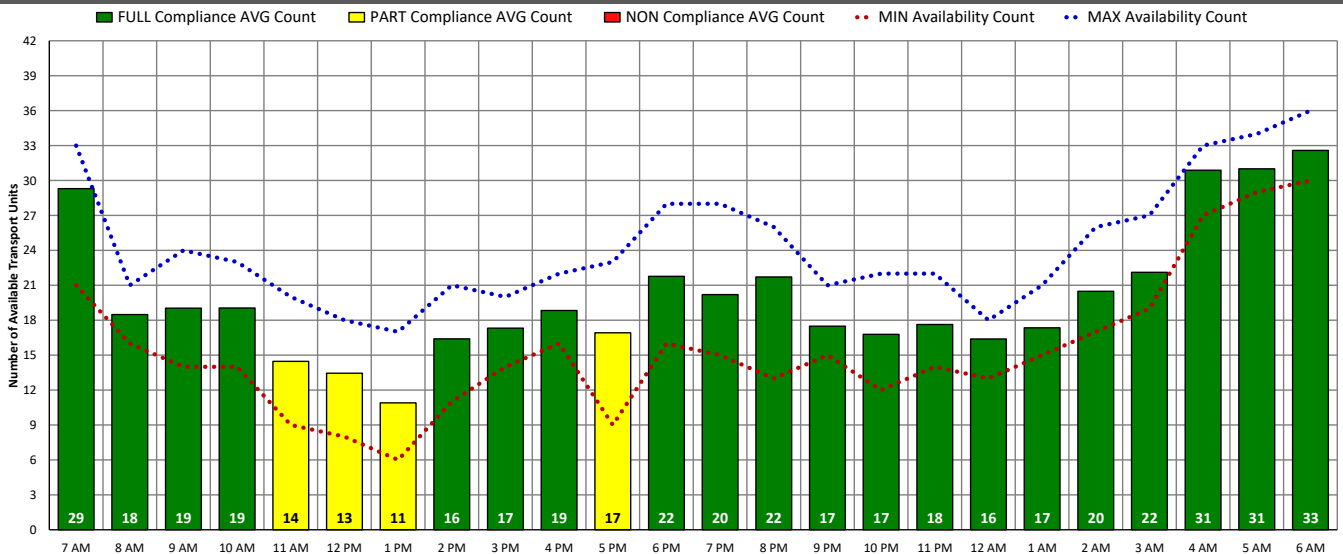
ALS Transport Unit Availability Compliance (FRI – 04/14/23)



BLS Transport Unit Availability Compliance (FRI – 04/14/23)

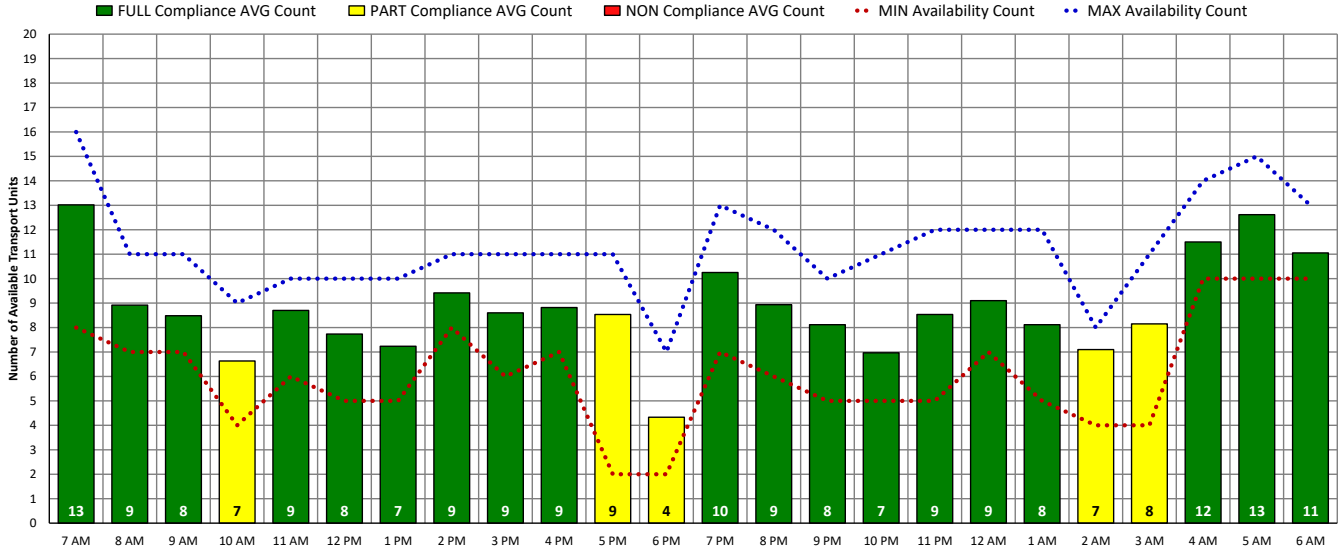


ALL Transport Unit Availability Compliance (FRI – 04/14/23)

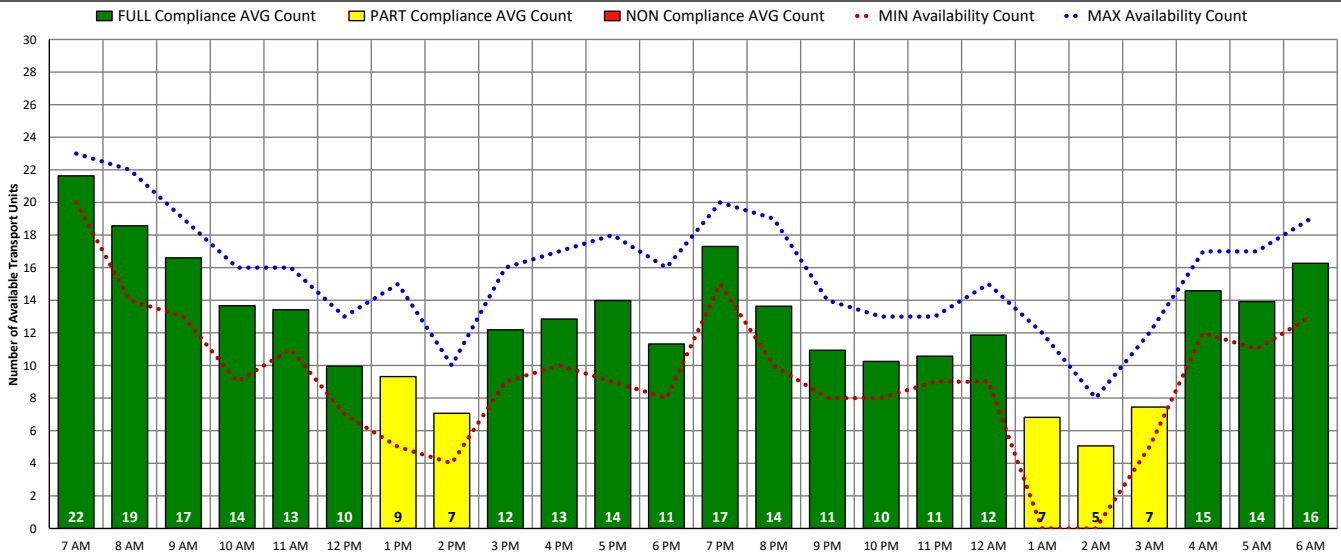


DISTRICT OF COLUMBIA FIRE AND EMS DEPARTMENT

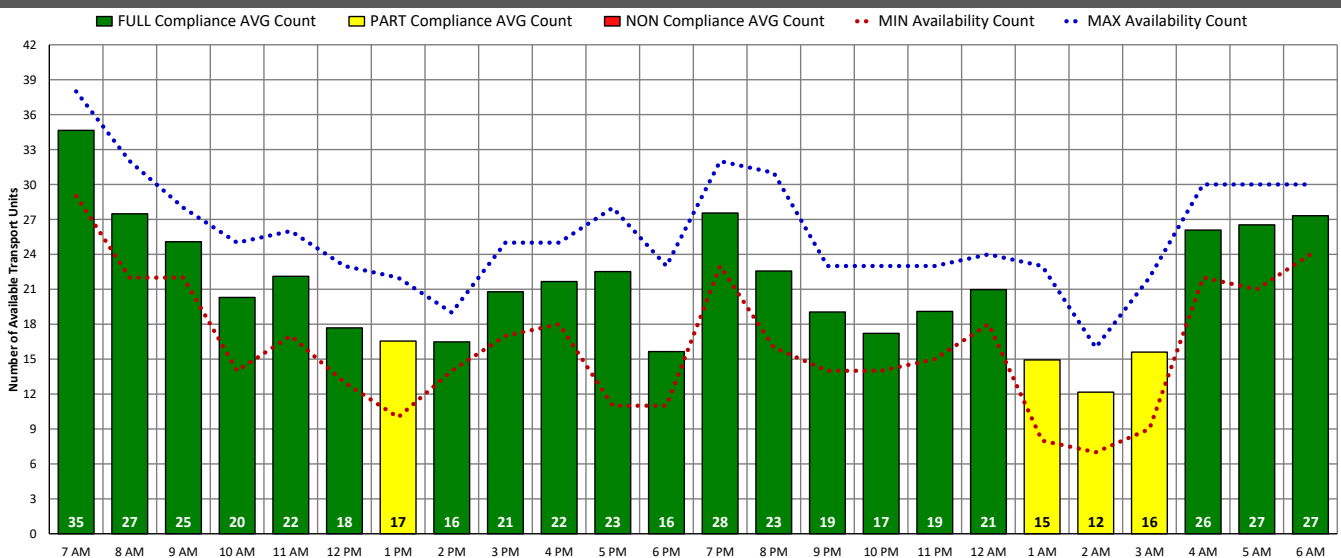
ALS Transport Unit Availability Compliance (SAT – 04/15/23)



BLS Transport Unit Availability Compliance (SAT – 04/15/23)

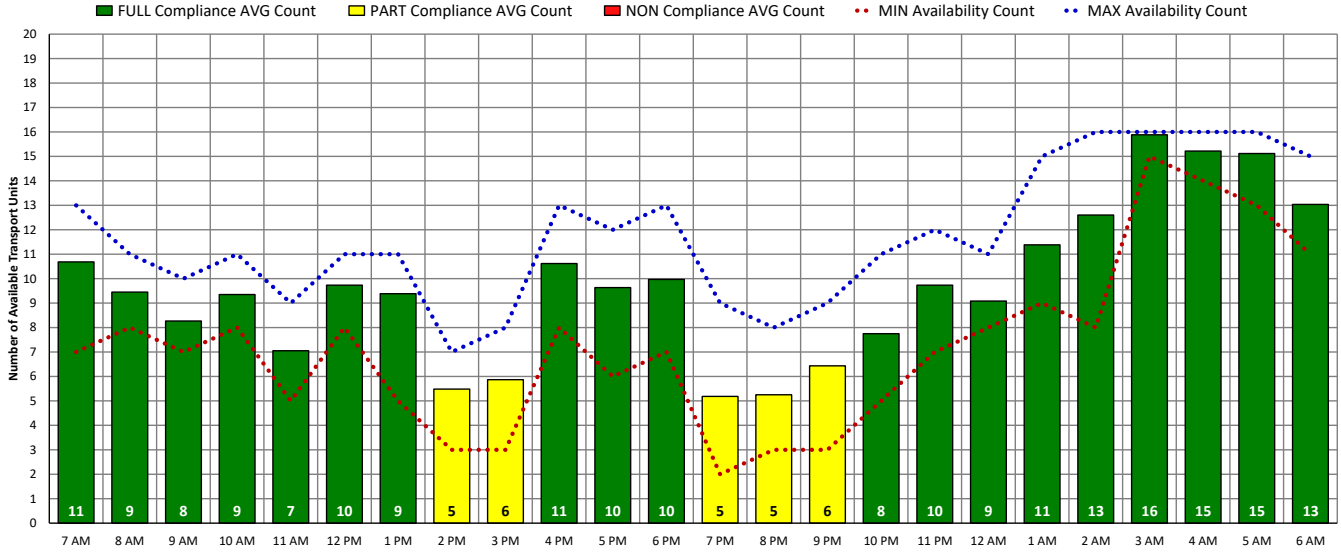


ALL Transport Unit Availability Compliance (SAT – 04/15/23)

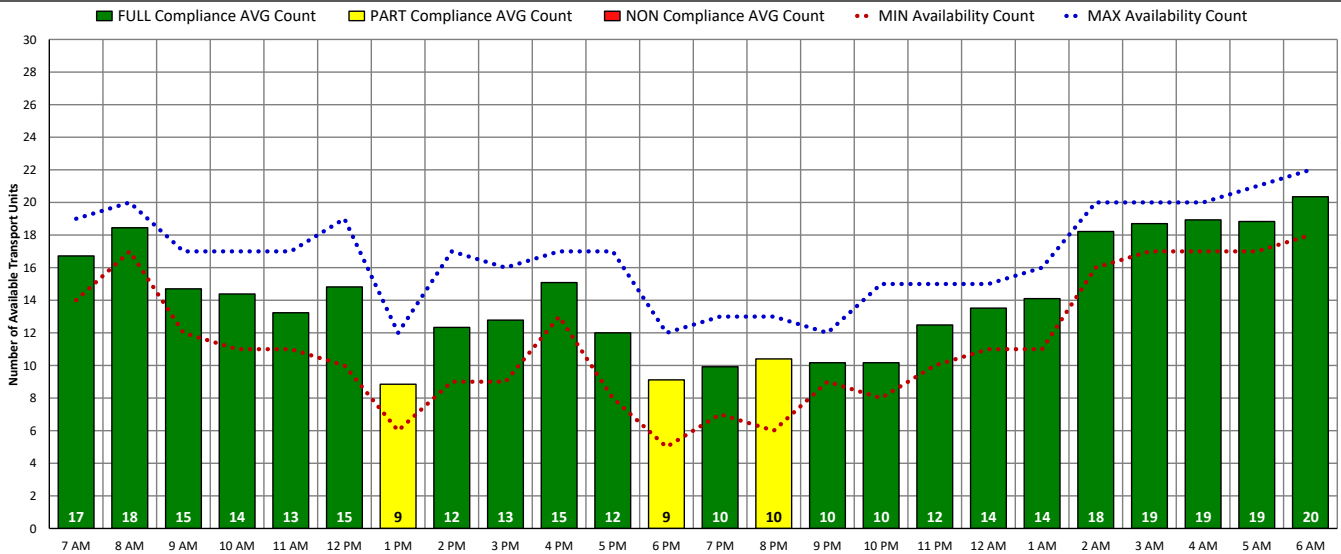


DISTRICT OF COLUMBIA FIRE AND EMS DEPARTMENT

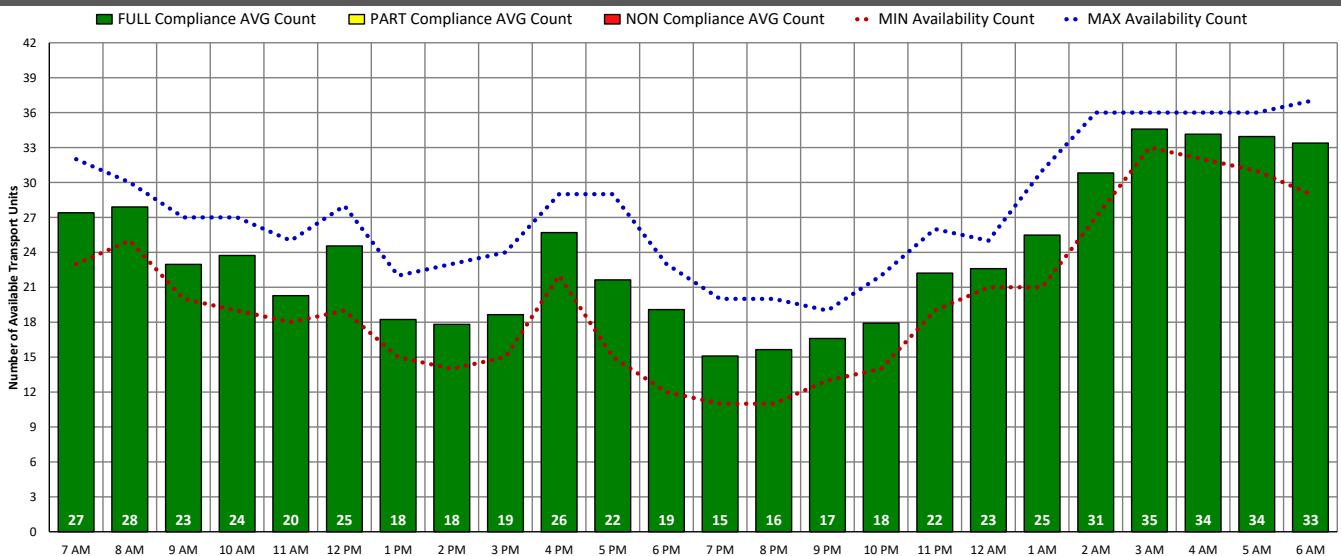
ALS Transport Unit Availability Compliance (SUN – 04/16/23)



BLS Transport Unit Availability Compliance (SUN – 04/16/23)

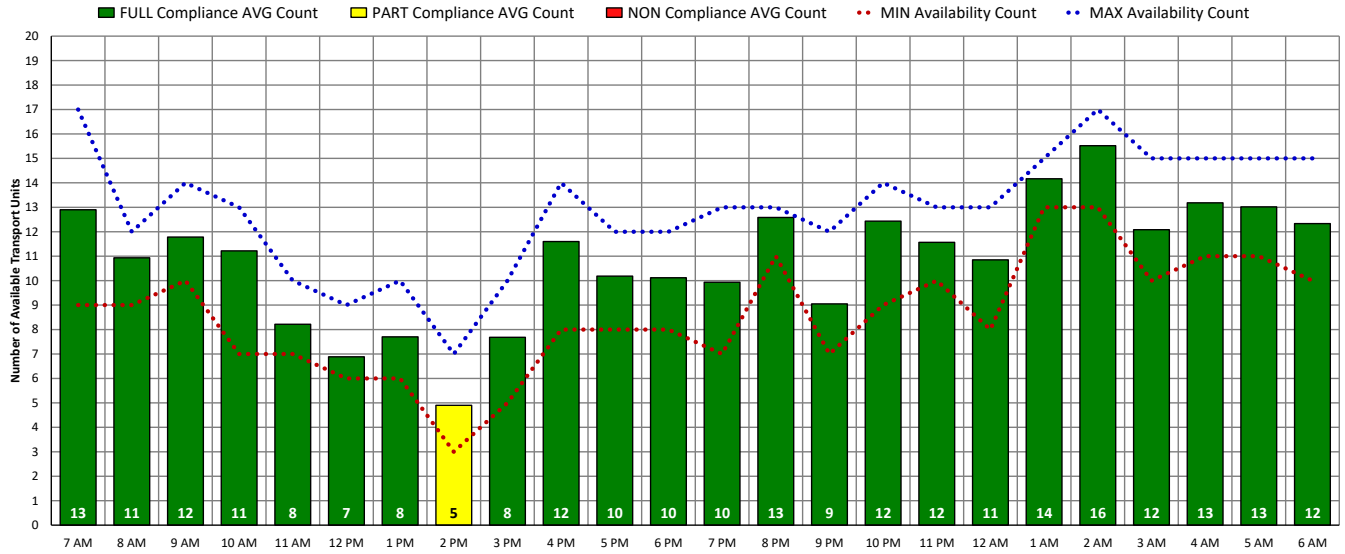


ALL Transport Unit Availability Compliance (SUN – 04/16/23)

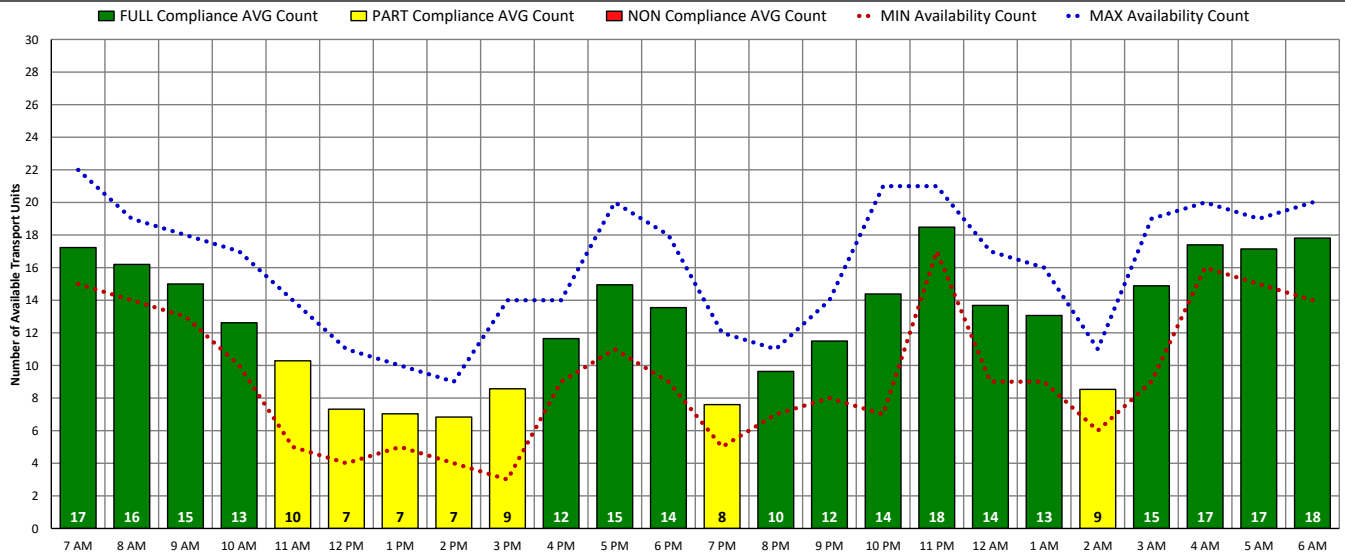


DISTRICT OF COLUMBIA FIRE AND EMS DEPARTMENT

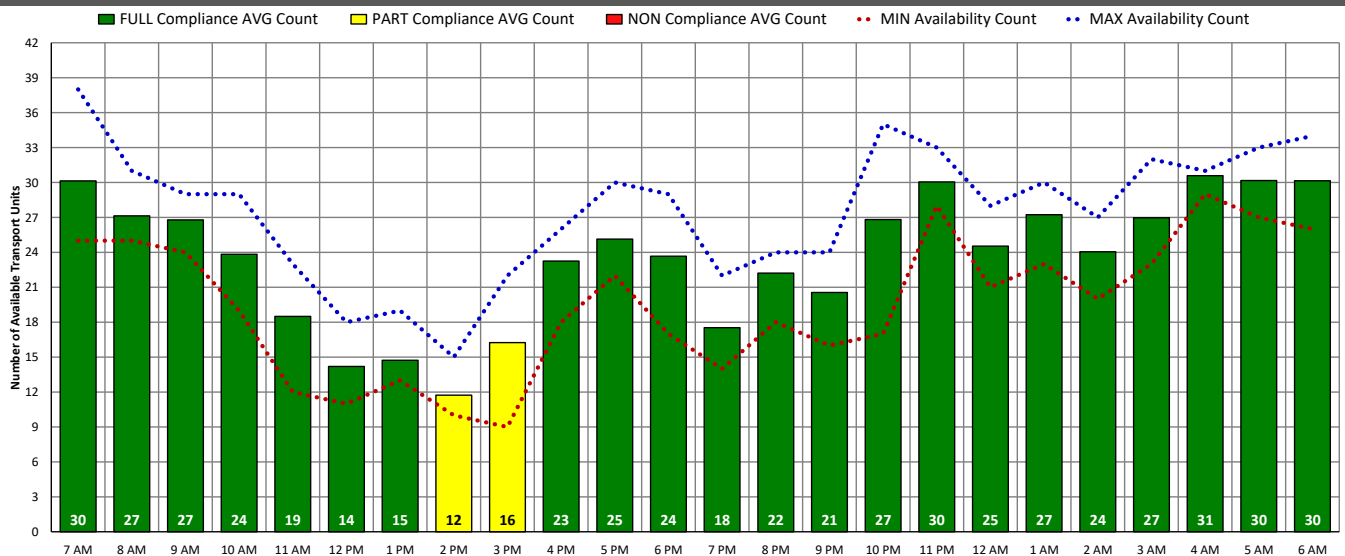
ALS Transport Unit Availability Compliance (MON – 04/17/23)



BLS Transport Unit Availability Compliance (MON – 04/17/23)

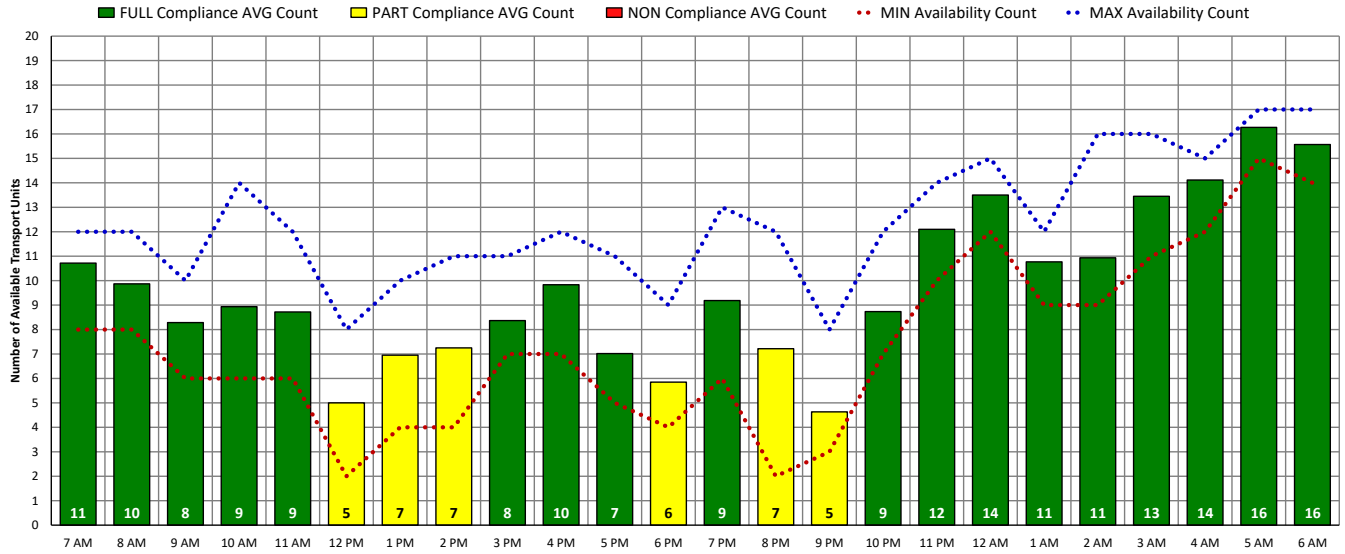


ALL Transport Unit Availability Compliance (MON – 04/17/23)

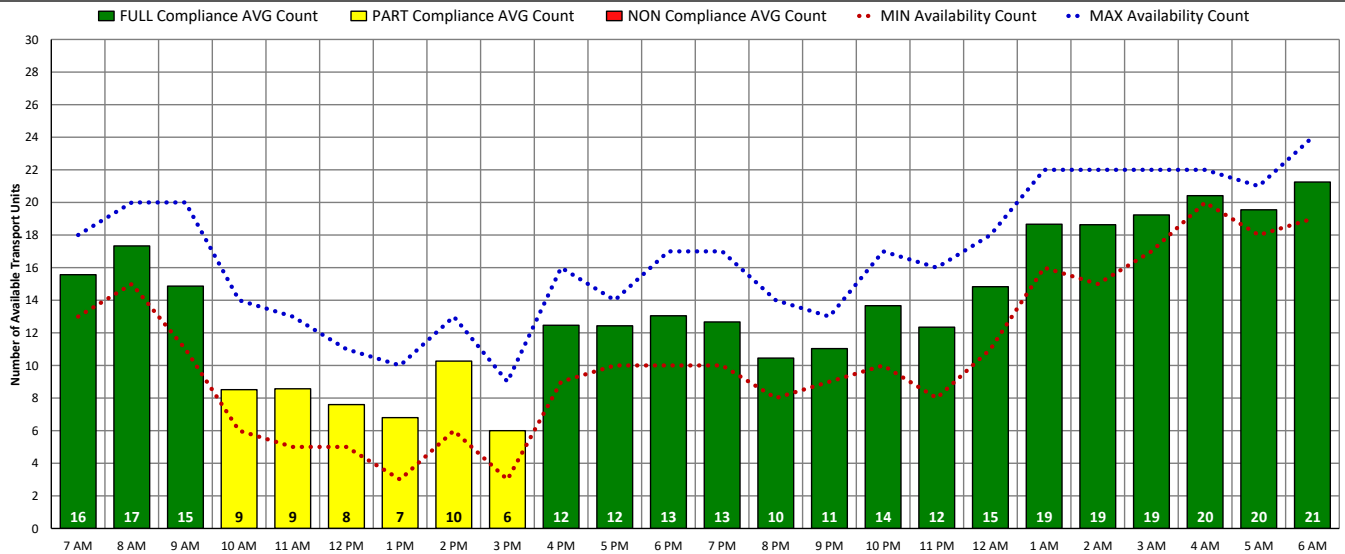


DISTRICT OF COLUMBIA FIRE AND EMS DEPARTMENT

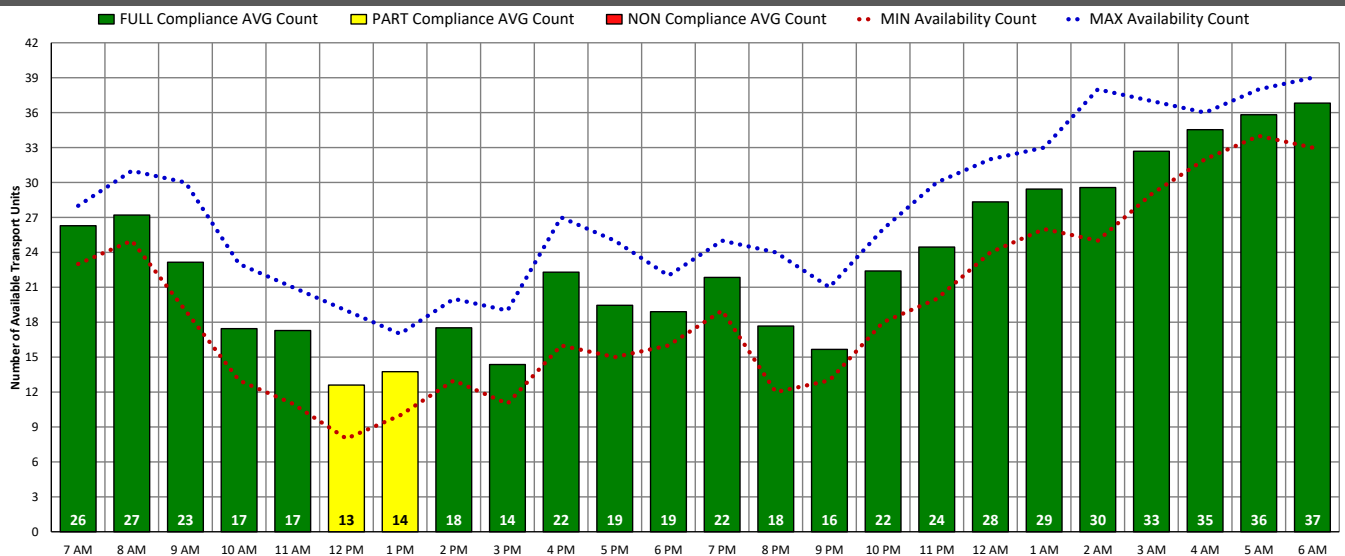
ALS Transport Unit Availability Compliance (TUE – 04/18/23)



BLS Transport Unit Availability Compliance (TUE – 04/18/23)

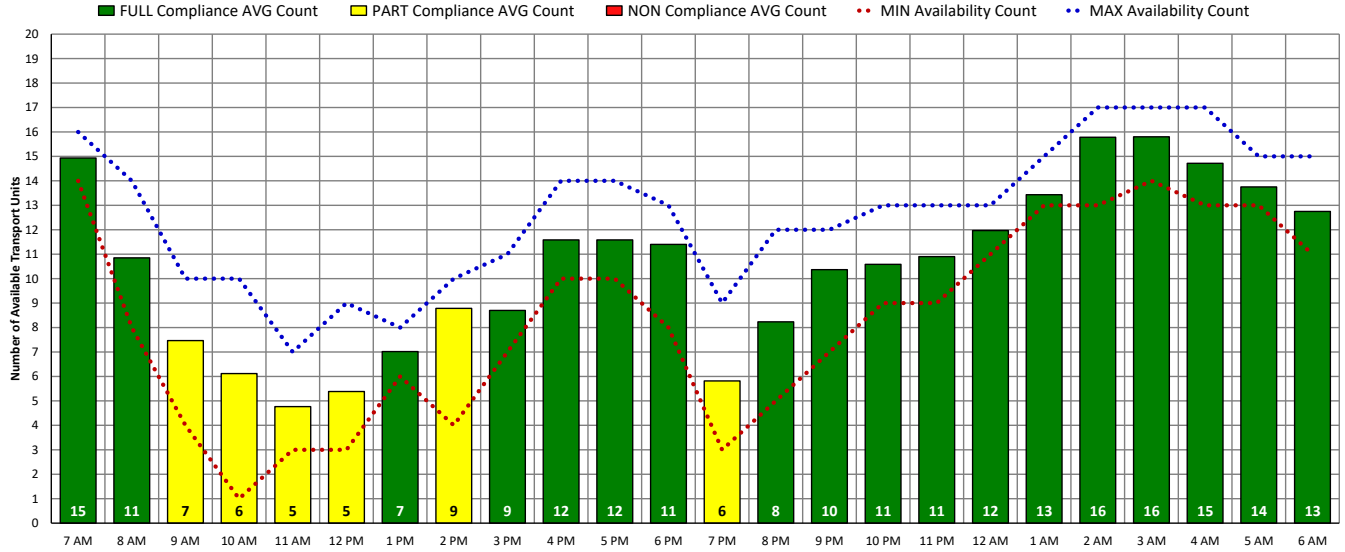


ALL Transport Unit Availability Compliance (TUE – 04/18/23)

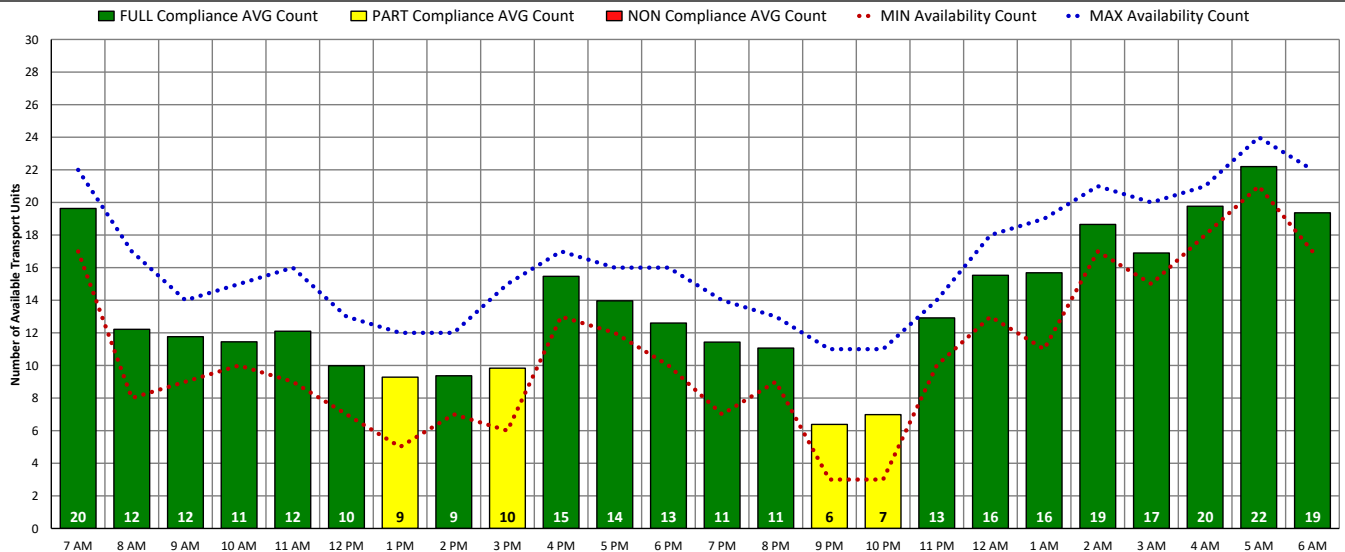


DISTRICT OF COLUMBIA FIRE AND EMS DEPARTMENT

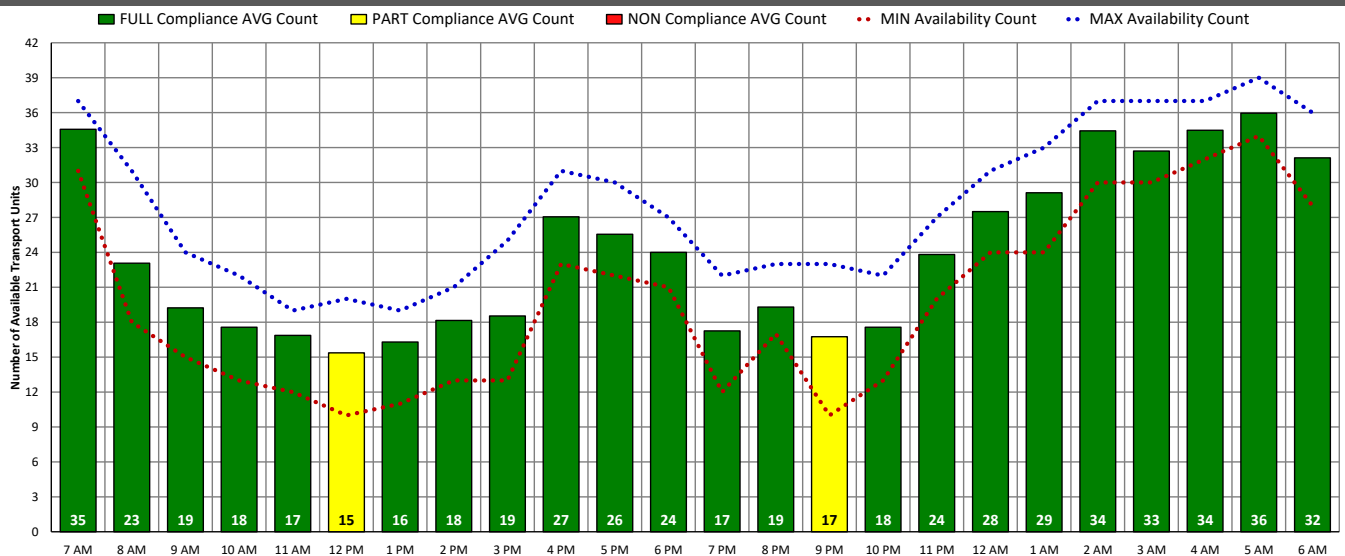
ALS Transport Unit Availability Compliance (WED – 04/19/23)



BLS Transport Unit Availability Compliance (WED – 04/19/23)

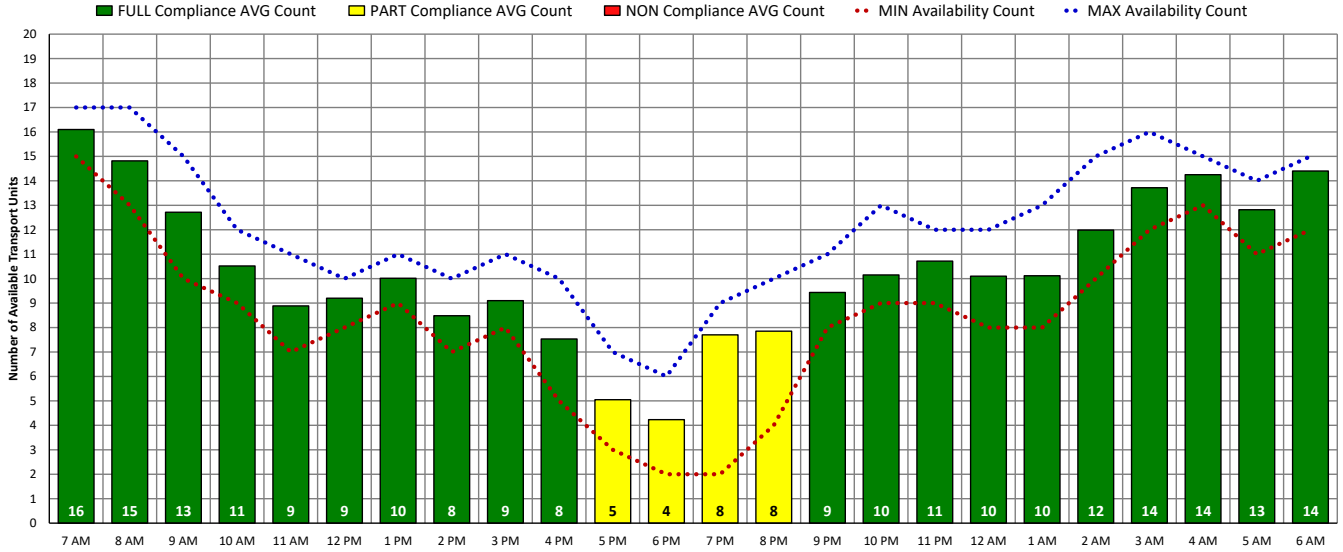


ALL Transport Unit Availability Compliance (WED – 04/19/23)

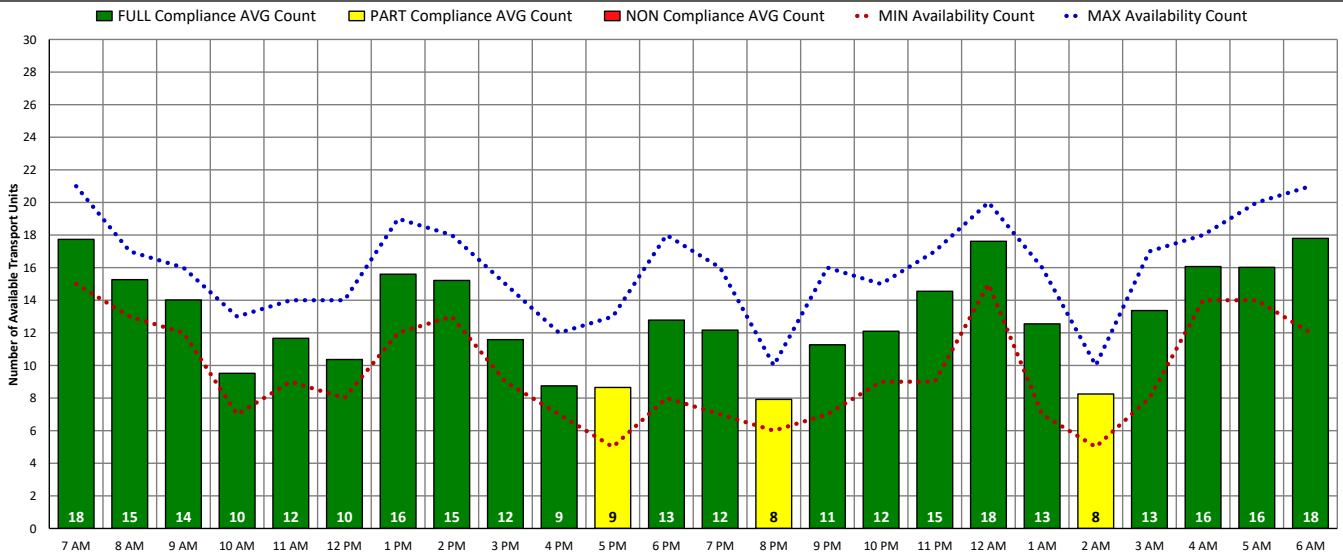


DISTRICT OF COLUMBIA FIRE AND EMS DEPARTMENT

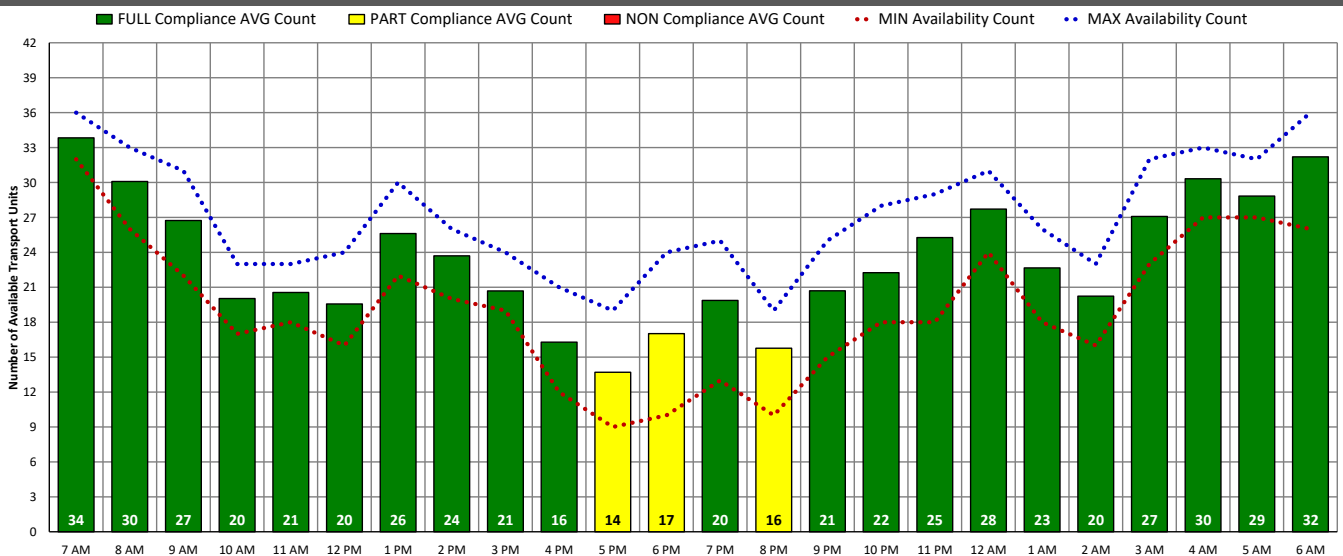
ALS Transport Unit Availability Compliance (THU – 04/20/23)



BLS Transport Unit Availability Compliance (THU – 04/20/23)

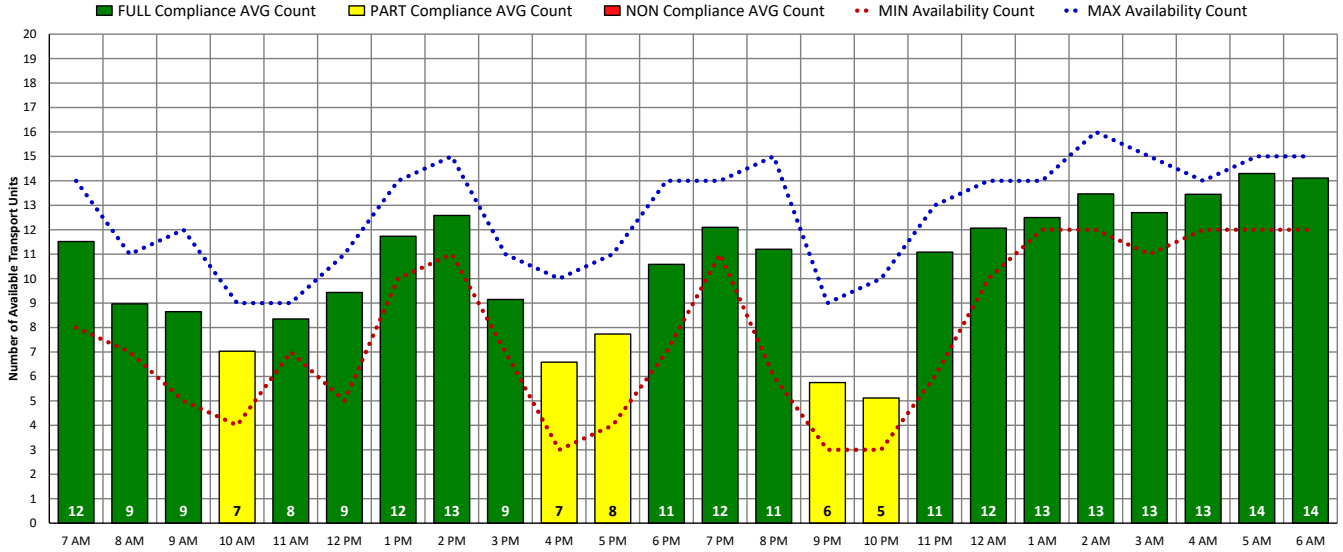


ALL Transport Unit Availability Compliance (THU – 04/20/23)

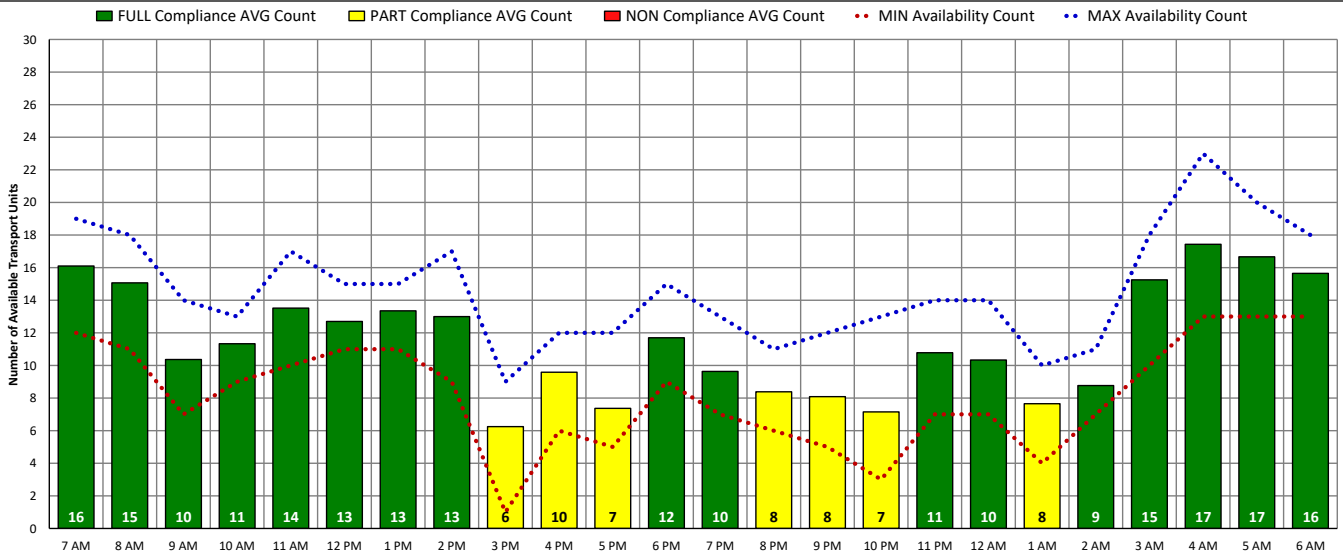


DISTRICT OF COLUMBIA FIRE AND EMS DEPARTMENT

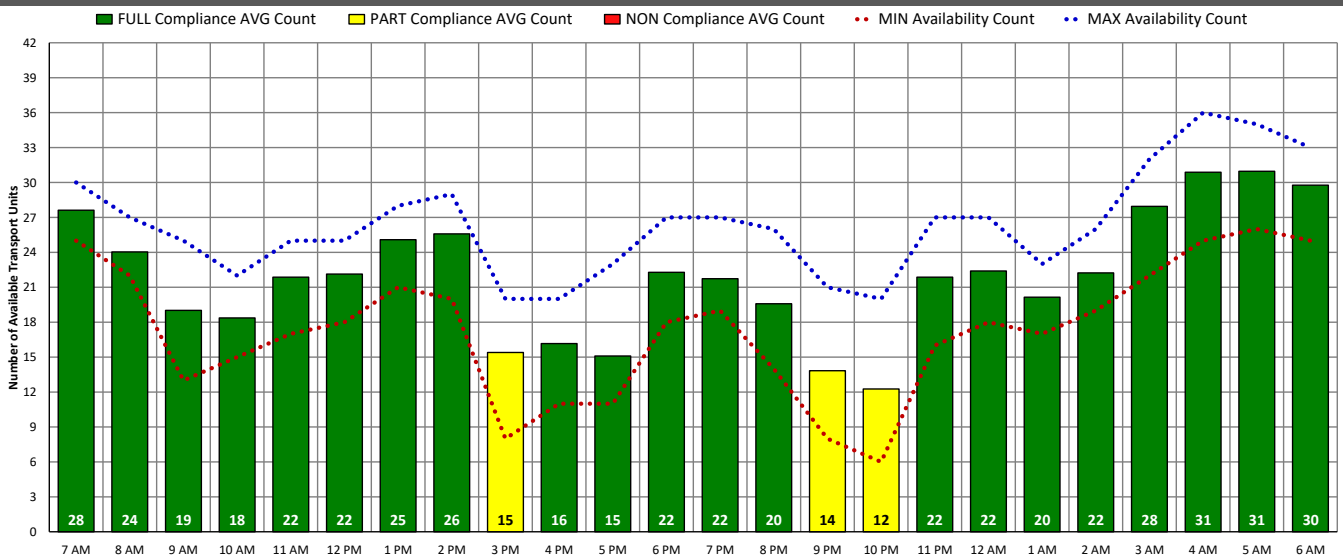
ALS Transport Unit Availability Compliance (FRI – 04/21/23)



BLS Transport Unit Availability Compliance (FRI – 04/21/23)

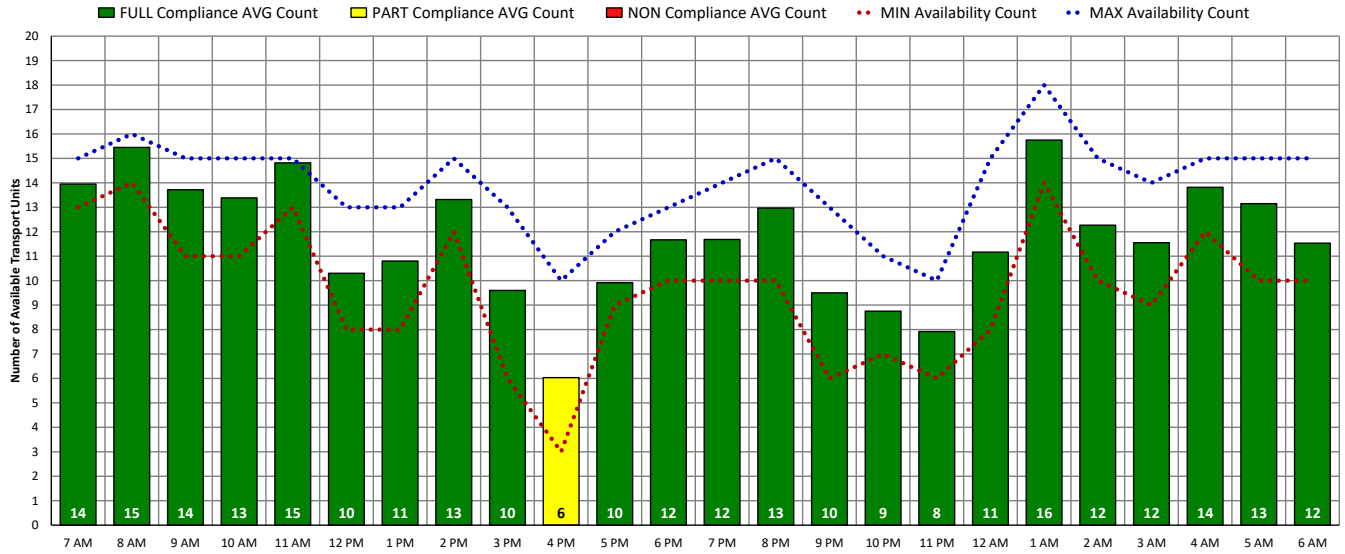


ALL Transport Unit Availability Compliance (FRI – 04/21/23)

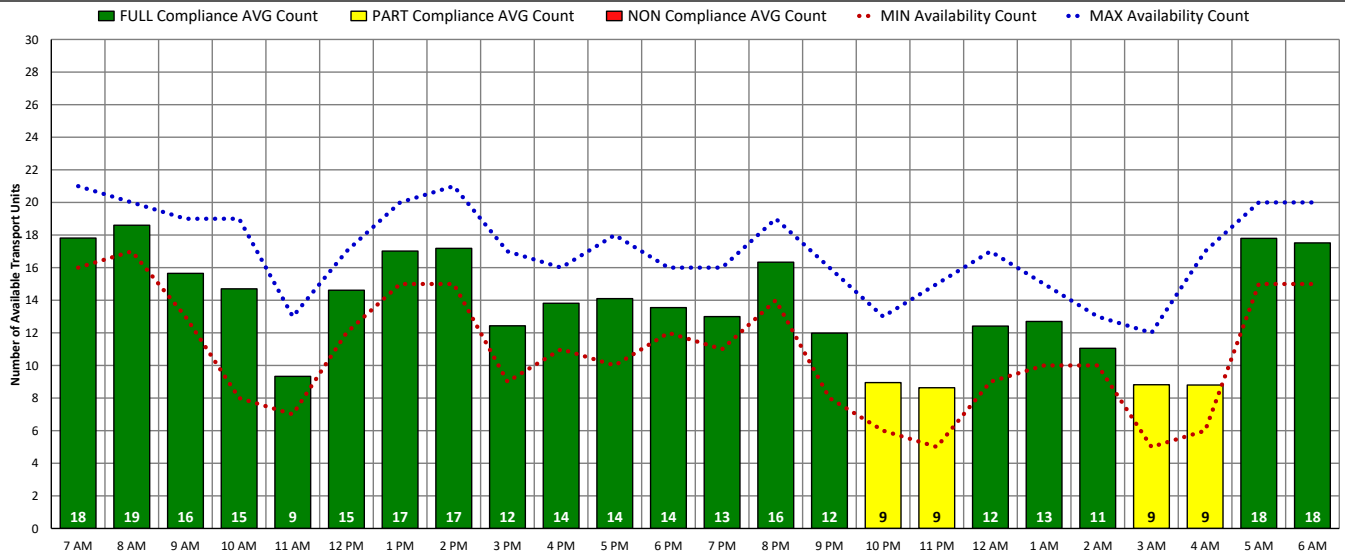


DISTRICT OF COLUMBIA FIRE AND EMS DEPARTMENT

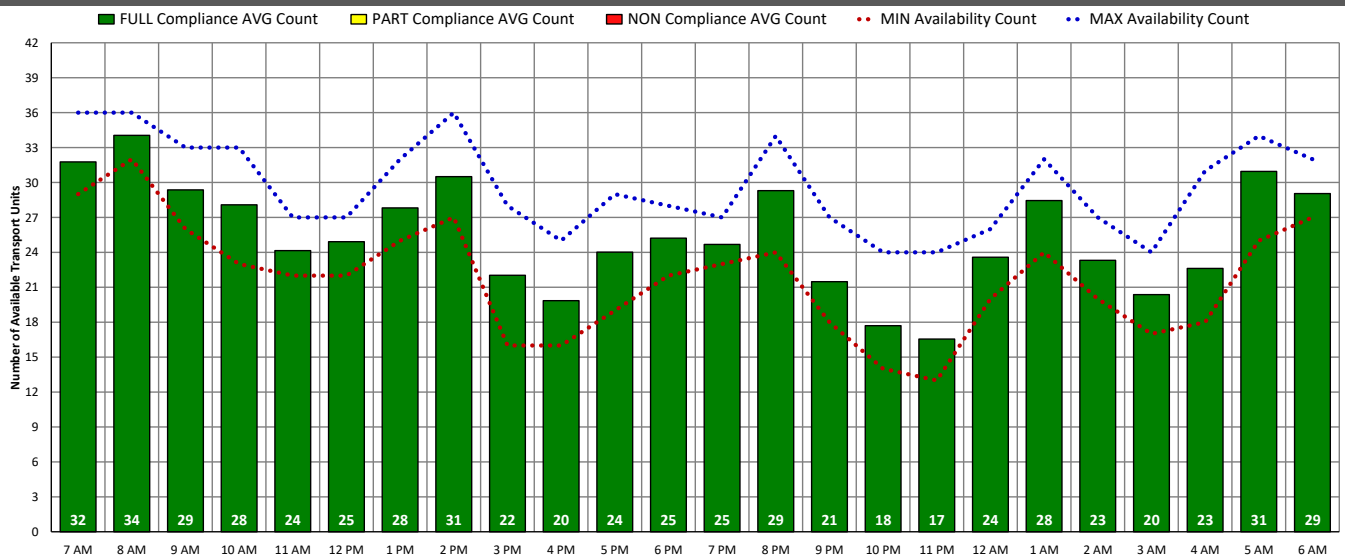
ALS Transport Unit Availability Compliance (SAT – 04/22/23)



BLS Transport Unit Availability Compliance (SAT – 04/22/23)

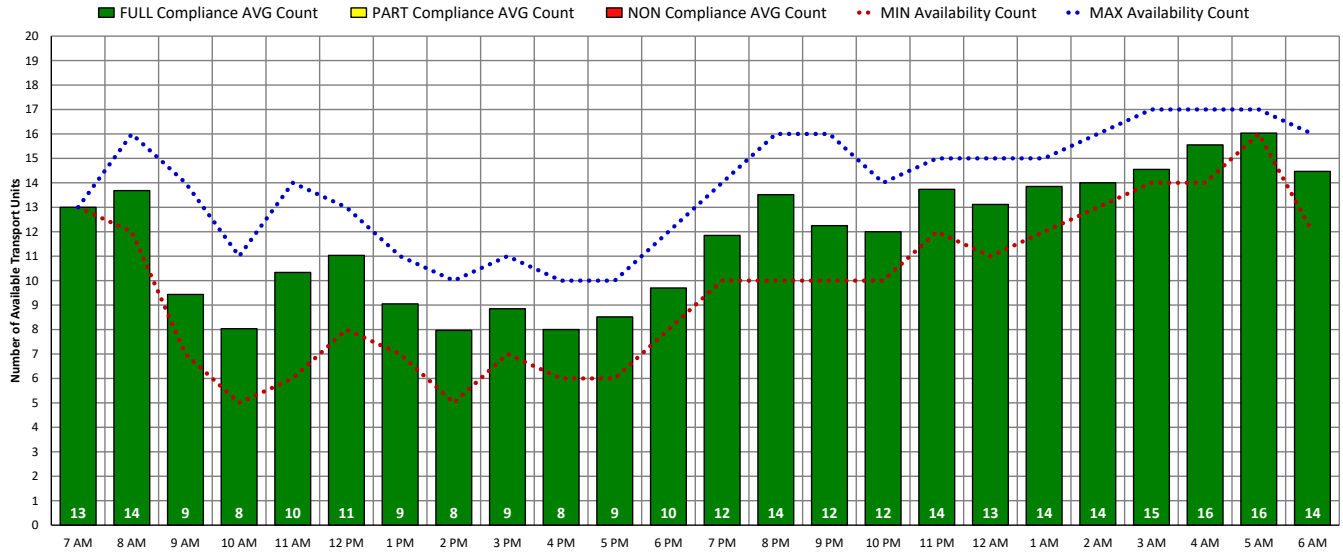


ALL Transport Unit Availability Compliance (SAT – 04/22/23)

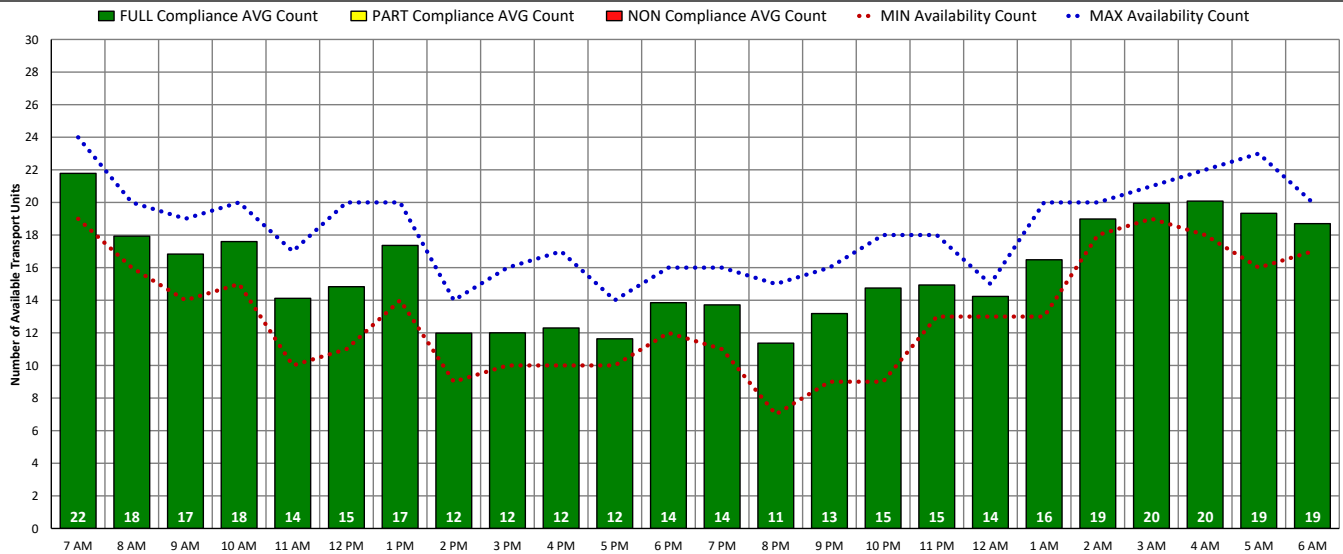


DISTRICT OF COLUMBIA FIRE AND EMS DEPARTMENT

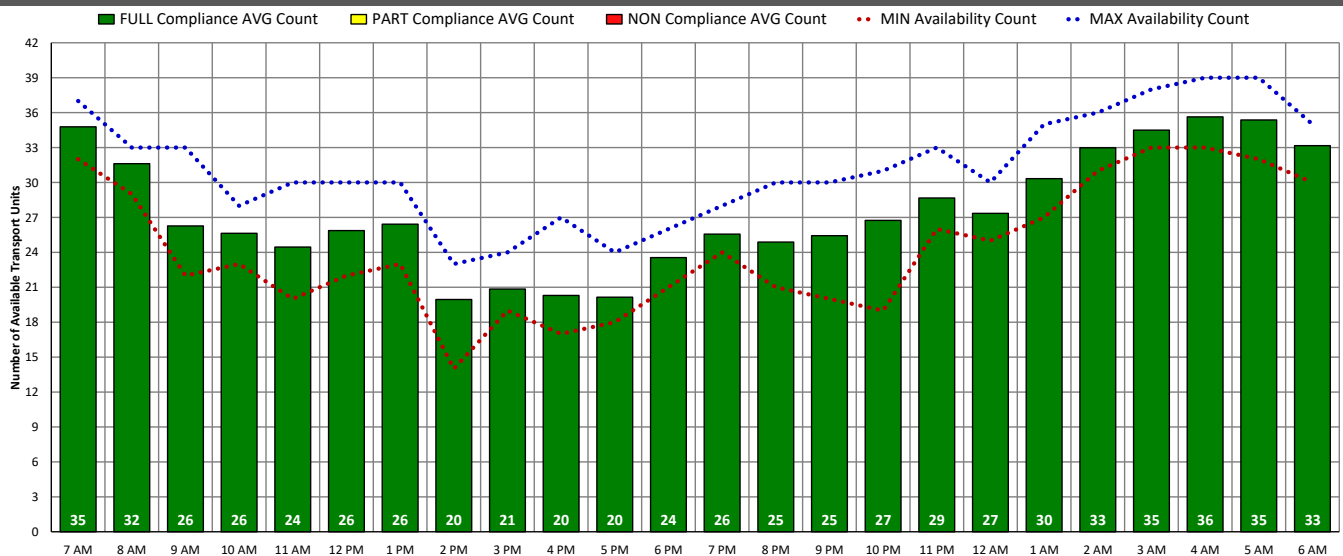
ALS Transport Unit Availability Compliance (SUN – 04/23/23)



BLS Transport Unit Availability Compliance (SUN – 04/23/23)

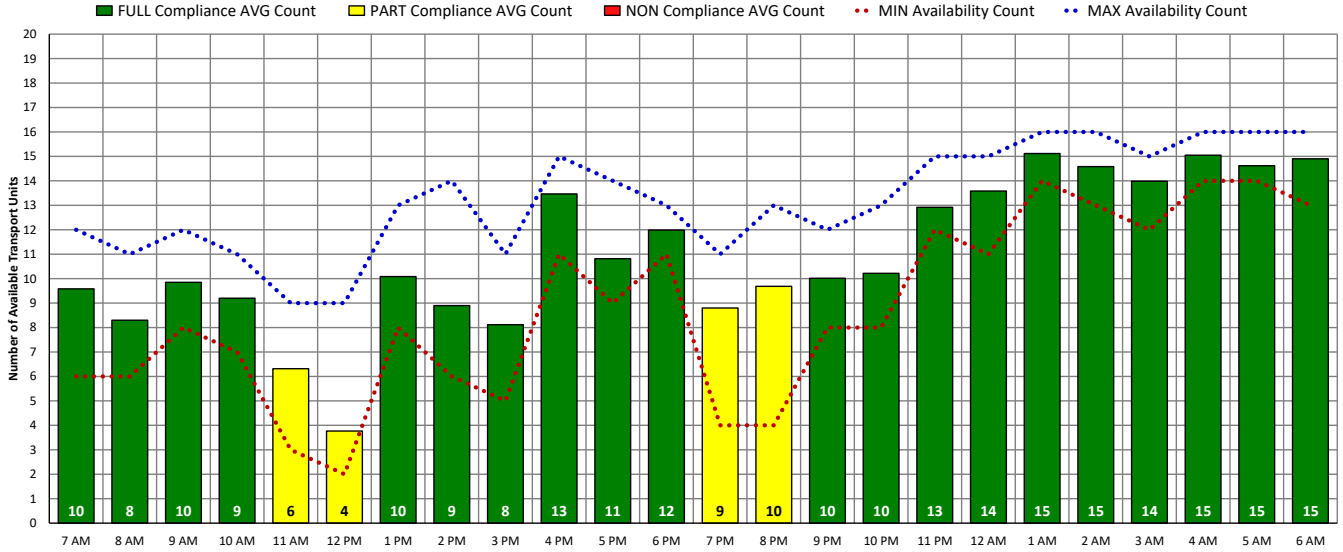


ALL Transport Unit Availability Compliance (SUN – 04/23/23)

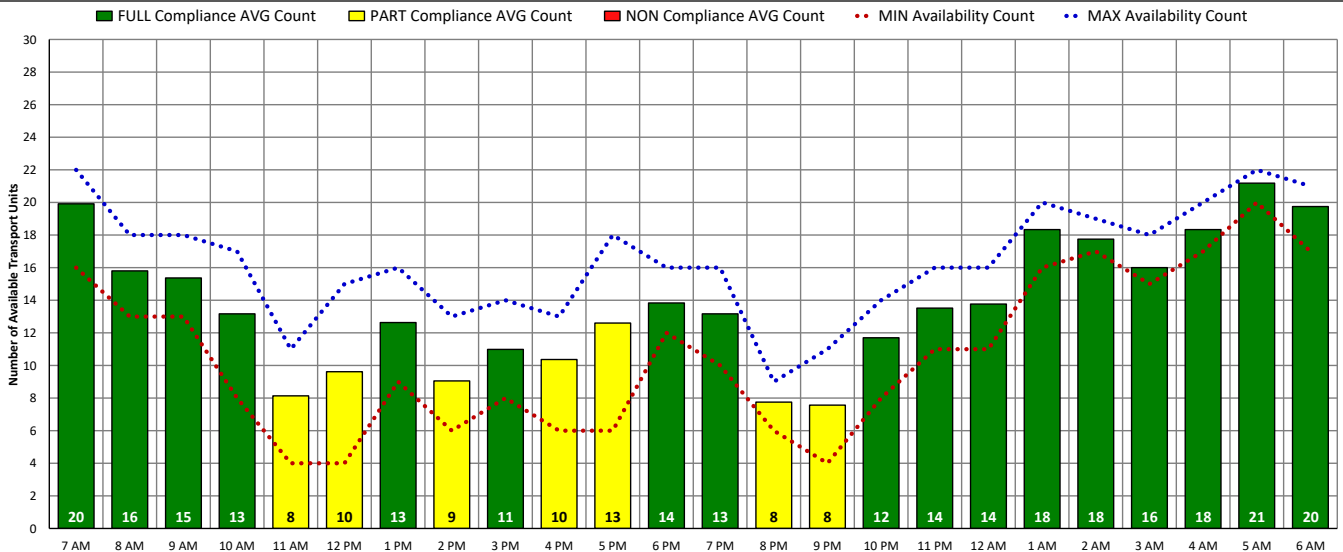


DISTRICT OF COLUMBIA FIRE AND EMS DEPARTMENT

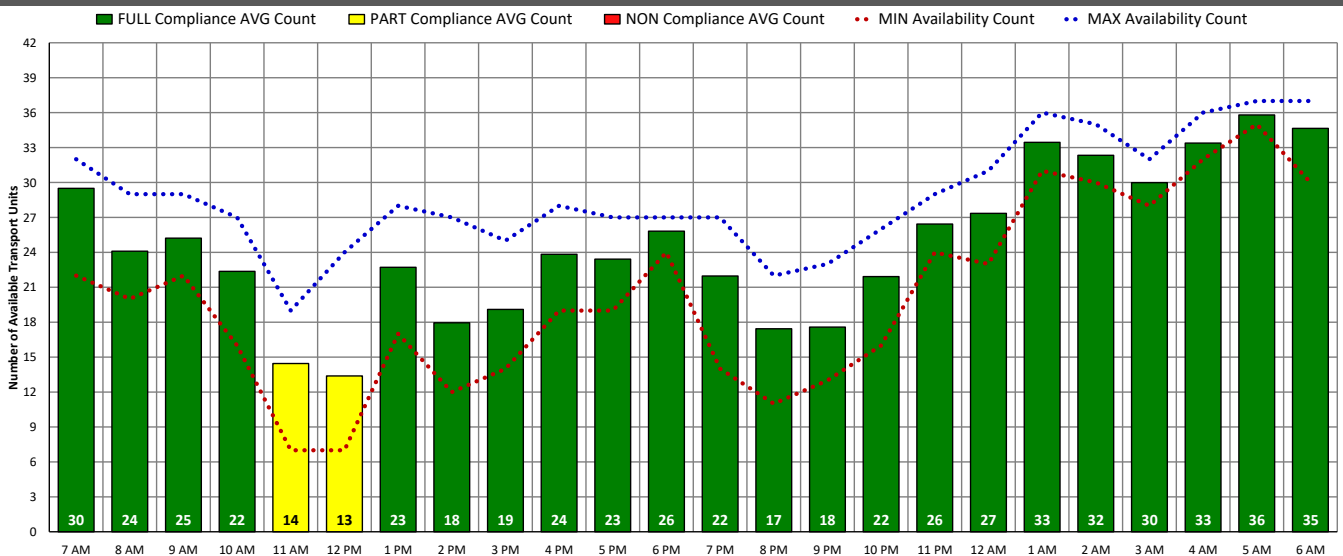
ALS Transport Unit Availability Compliance (MON – 04/24/23)



BLS Transport Unit Availability Compliance (MON – 04/24/23)

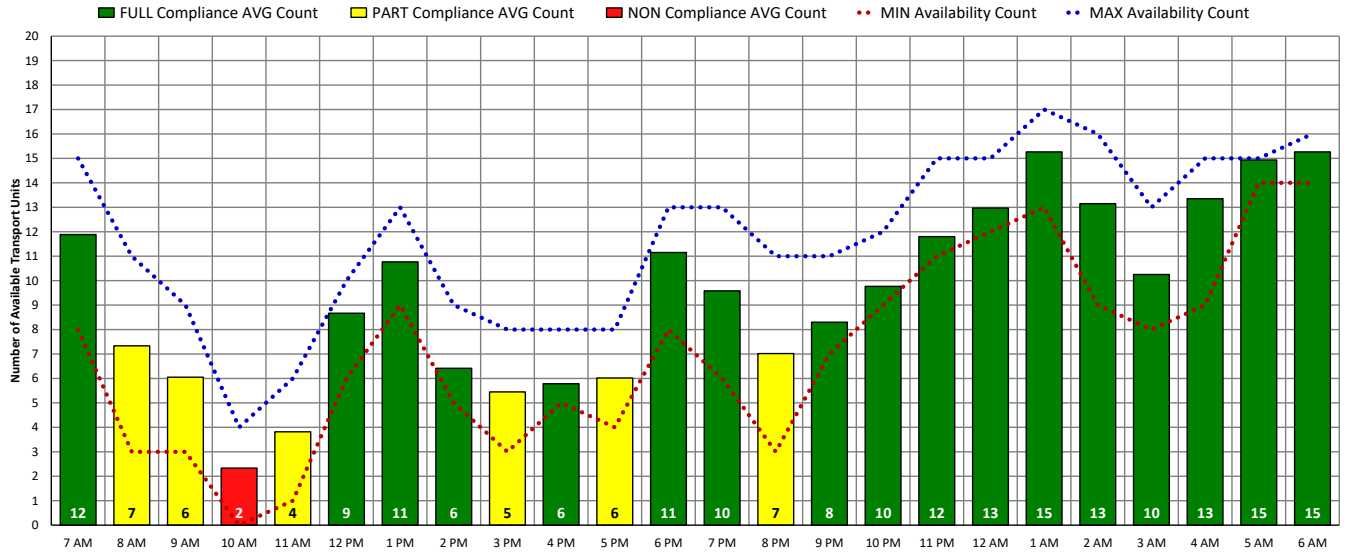


ALL Transport Unit Availability Compliance (MON – 04/24/23)

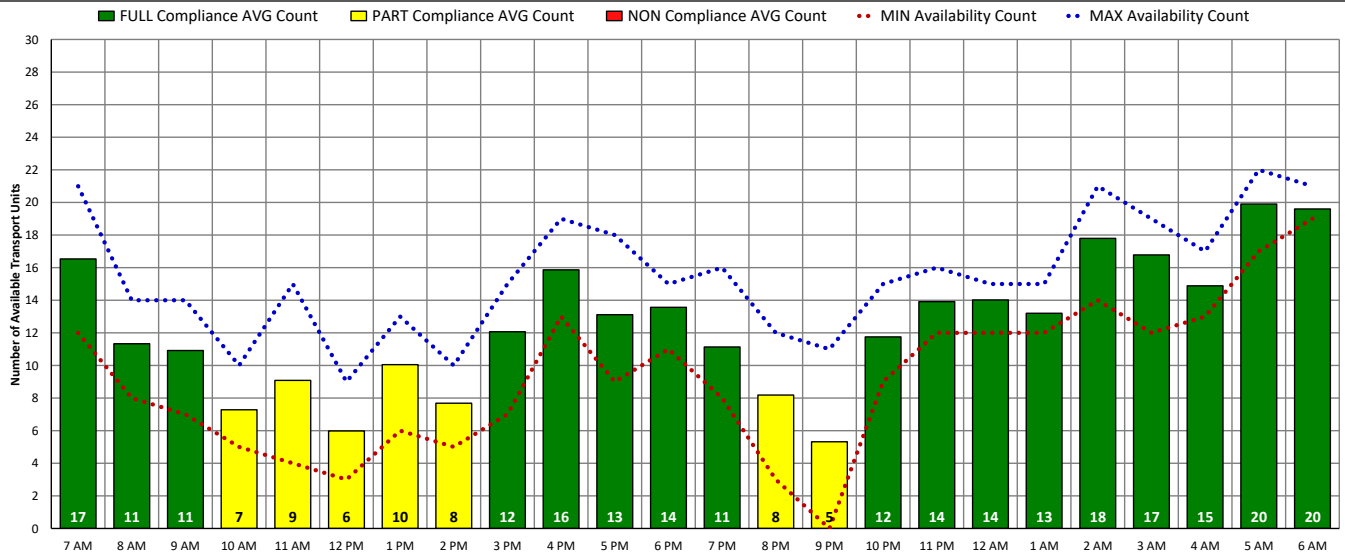


DISTRICT OF COLUMBIA FIRE AND EMS DEPARTMENT

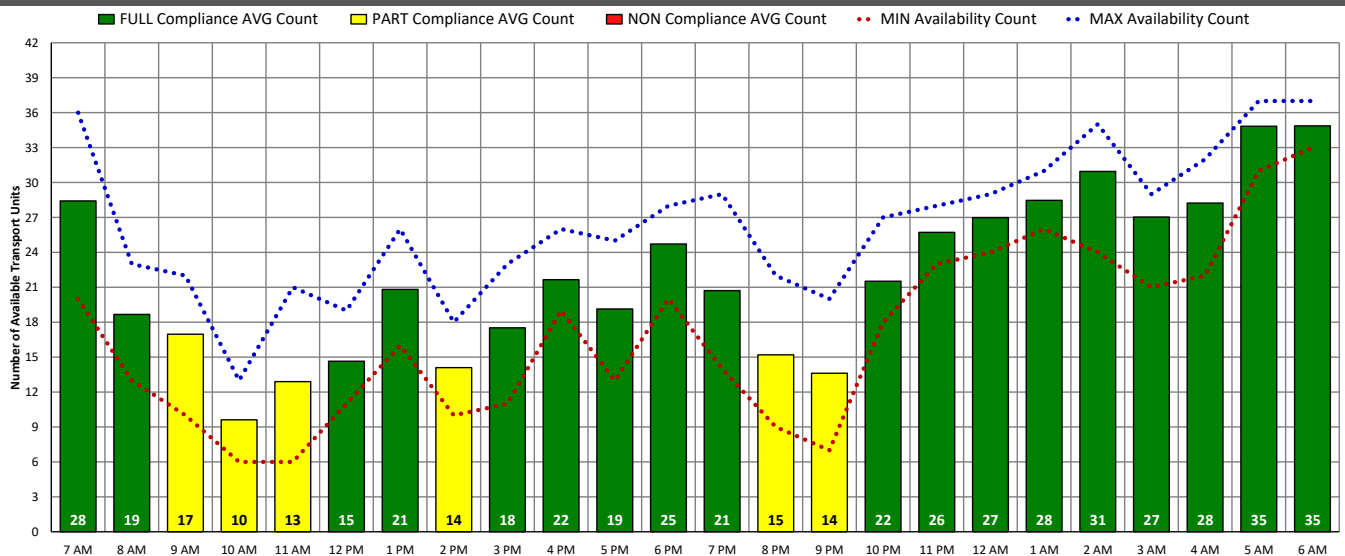
ALS Transport Unit Availability Compliance (TUE – 04/25/23)



BLS Transport Unit Availability Compliance (TUE – 04/25/23)

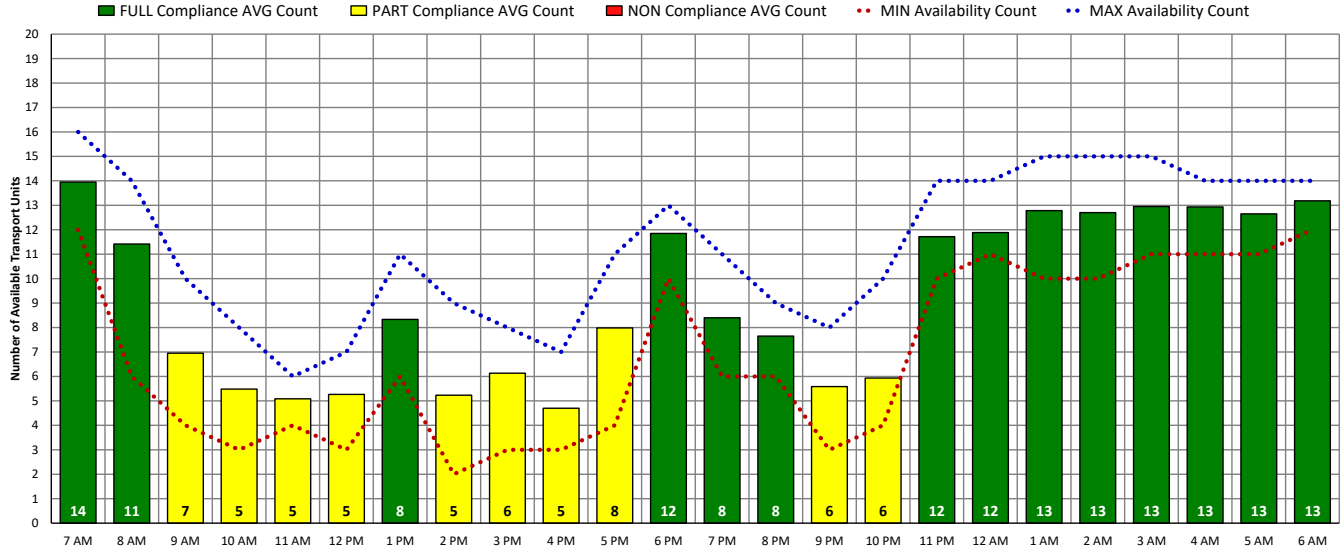


ALL Transport Unit Availability Compliance (TUE – 04/25/23)

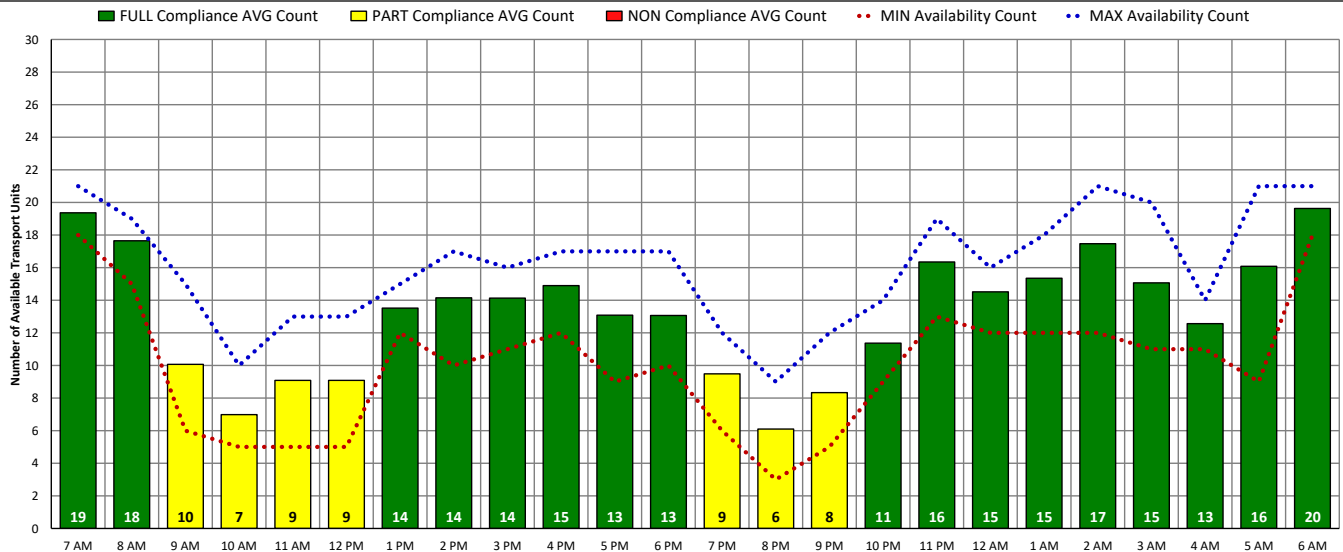


DISTRICT OF COLUMBIA FIRE AND EMS DEPARTMENT

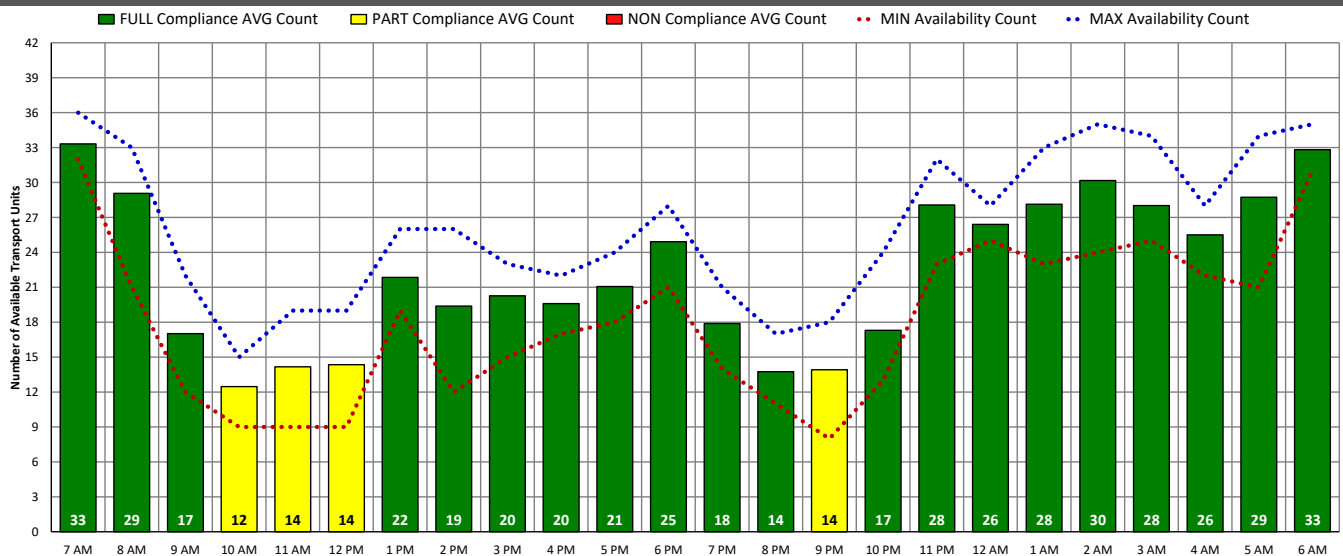
ALS Transport Unit Availability Compliance (WED – 04/26/23)



BLS Transport Unit Availability Compliance (WED – 04/26/23)

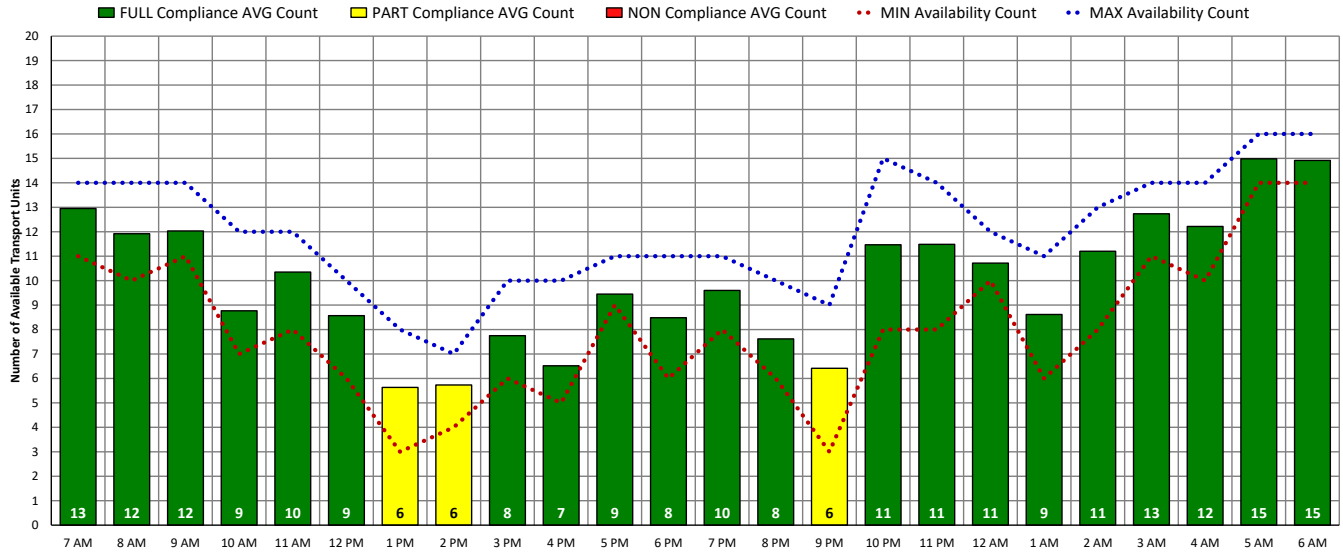


ALL Transport Unit Availability Compliance (WED – 04/26/23)

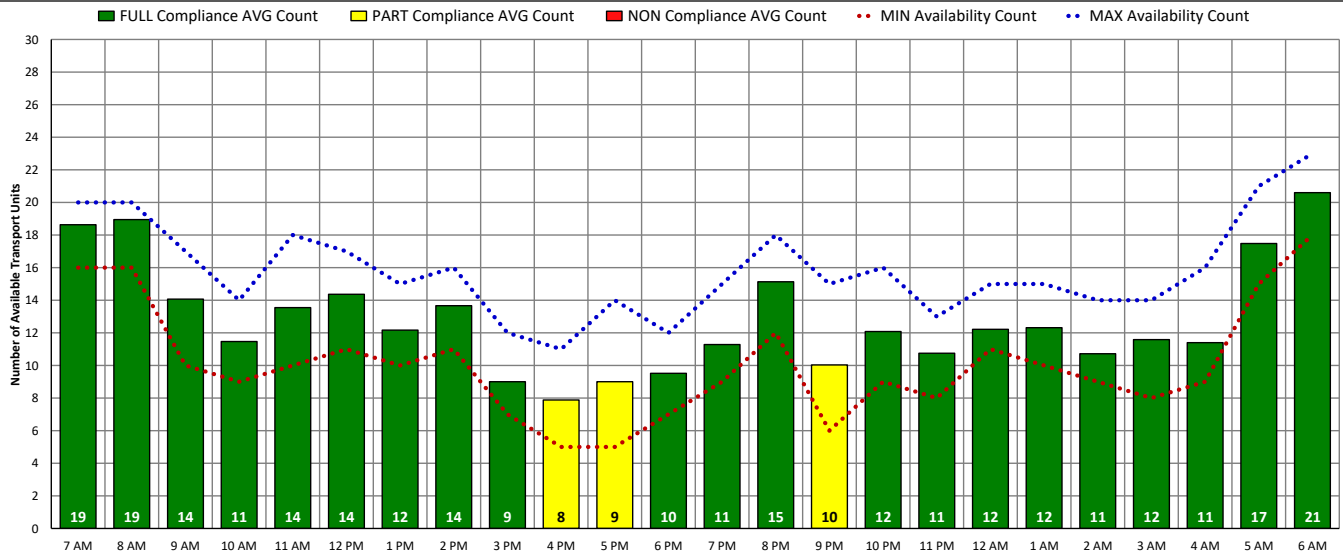


DISTRICT OF COLUMBIA FIRE AND EMS DEPARTMENT

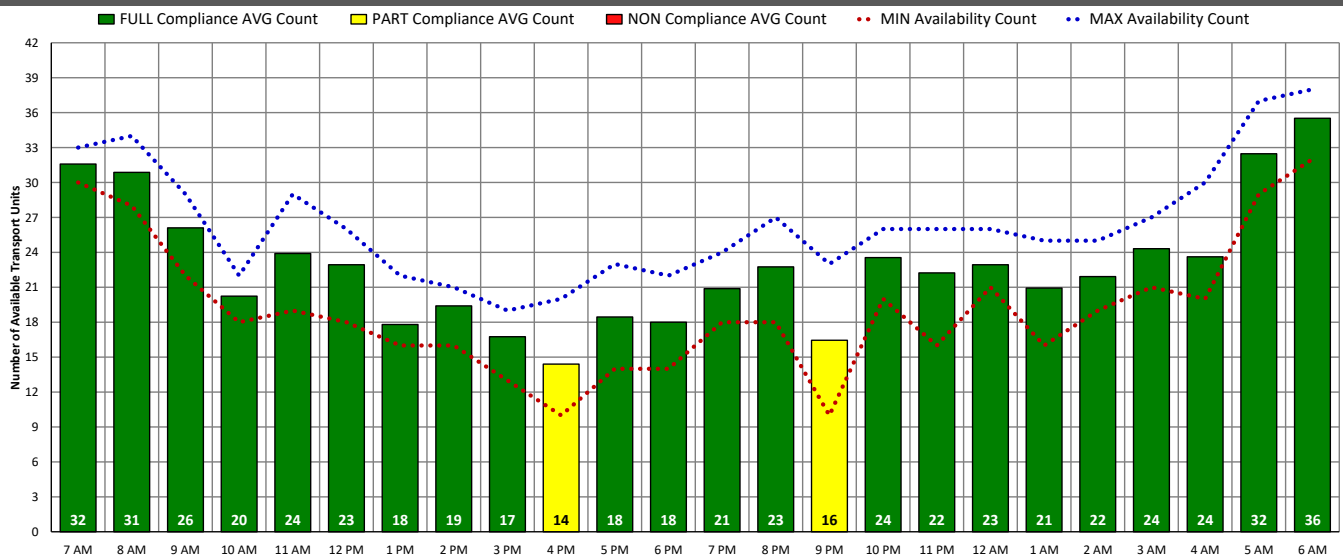
ALS Transport Unit Availability Compliance (THU – 04/27/23)



BLS Transport Unit Availability Compliance (THU – 04/27/23)

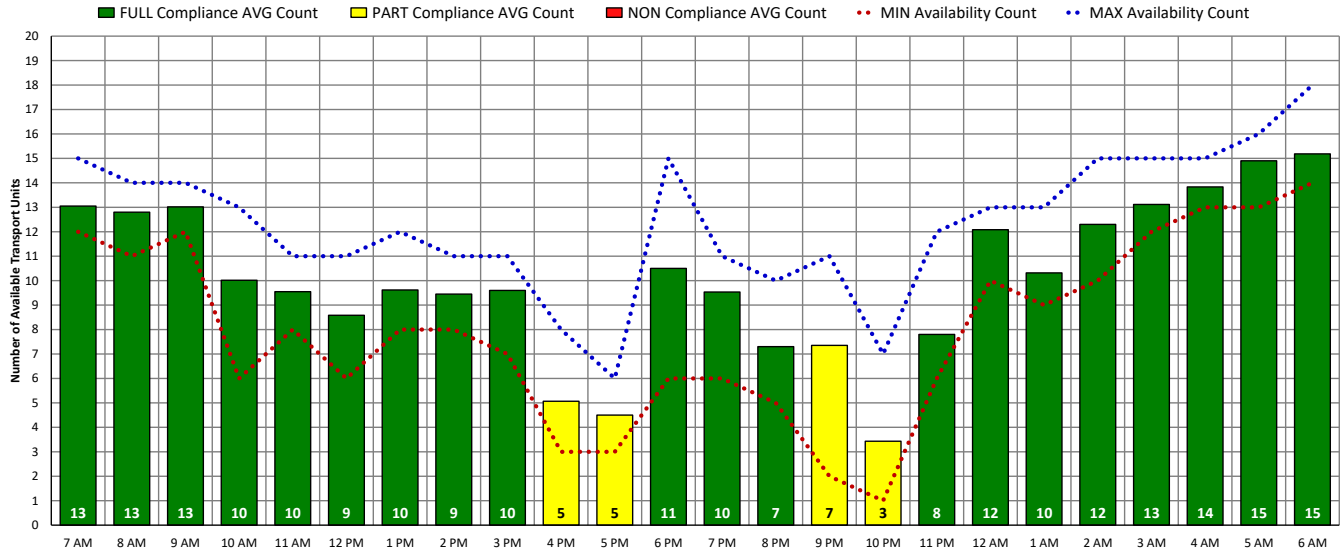


ALL Transport Unit Availability Compliance (THU – 04/27/23)

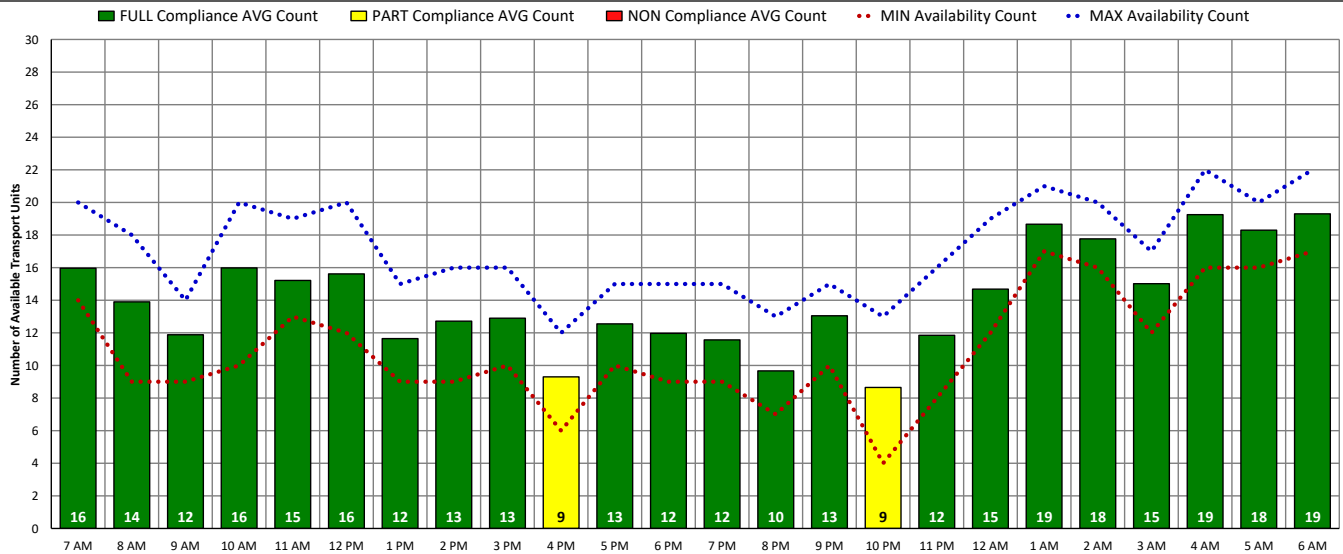


DISTRICT OF COLUMBIA FIRE AND EMS DEPARTMENT

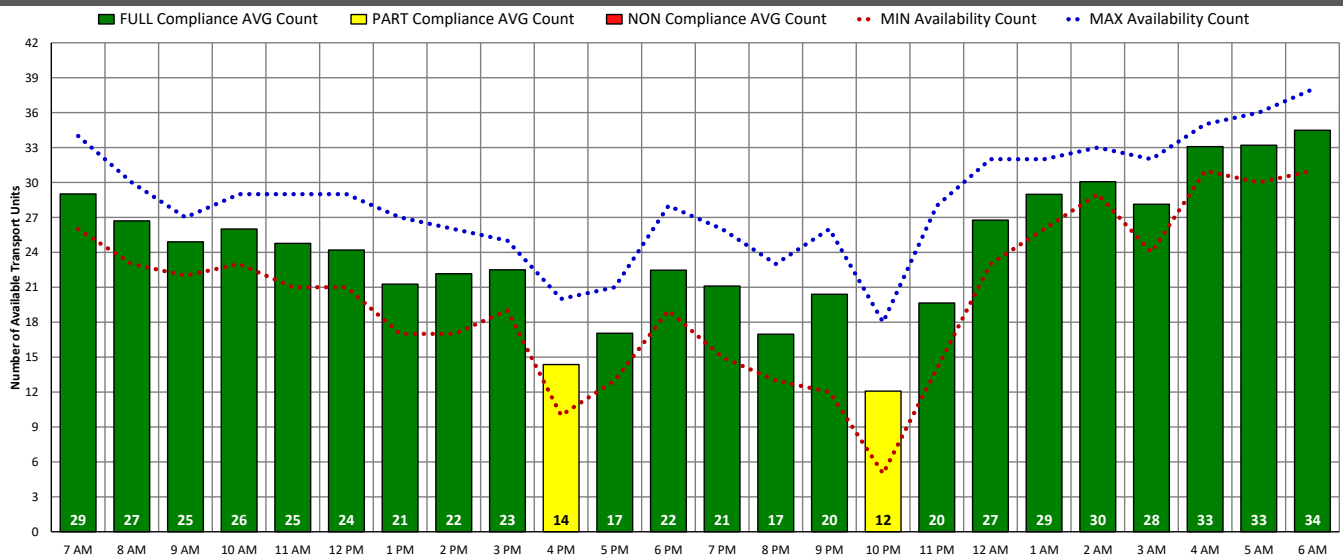
ALS Transport Unit Availability Compliance (FRI – 04/28/23)



BLS Transport Unit Availability Compliance (FRI – 04/28/23)

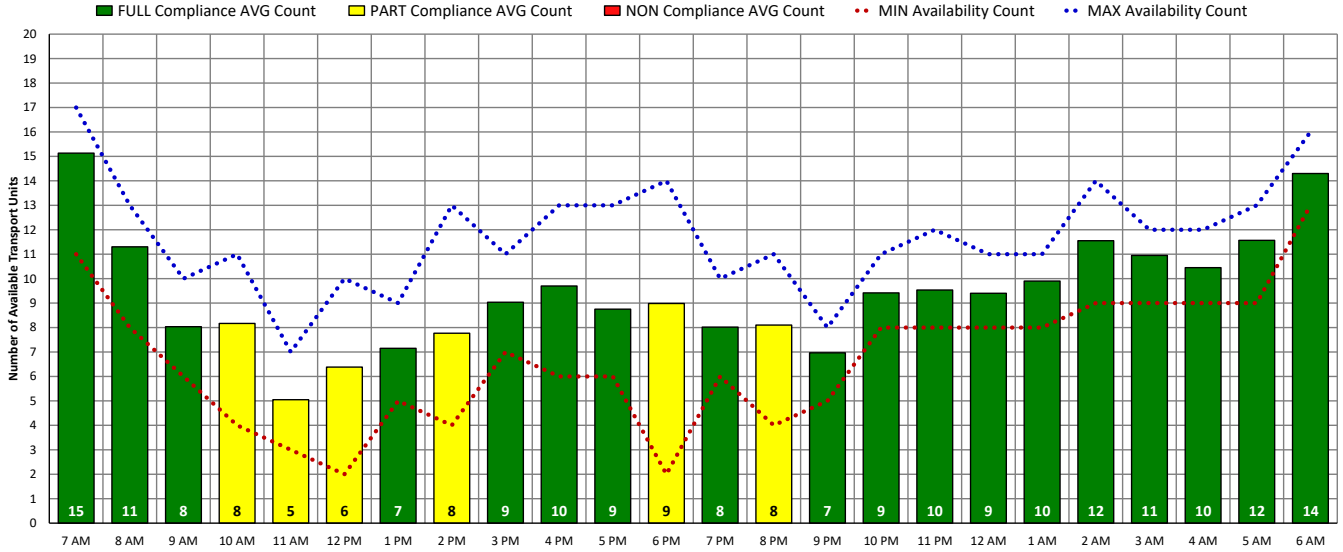


ALL Transport Unit Availability Compliance (FRI – 04/28/23)

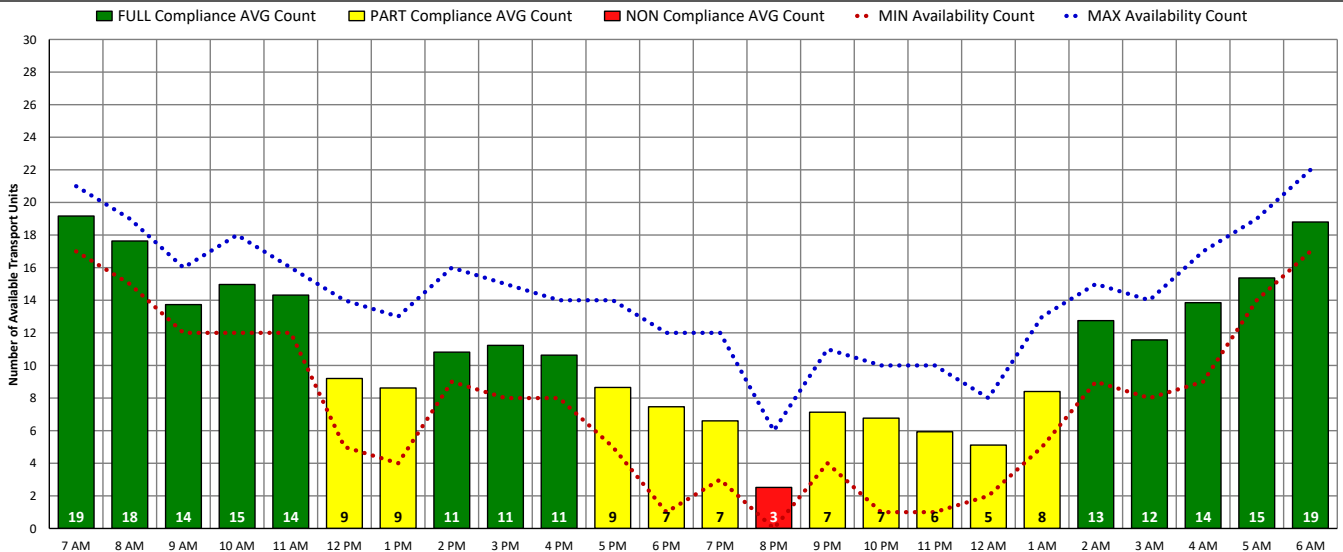


DISTRICT OF COLUMBIA FIRE AND EMS DEPARTMENT

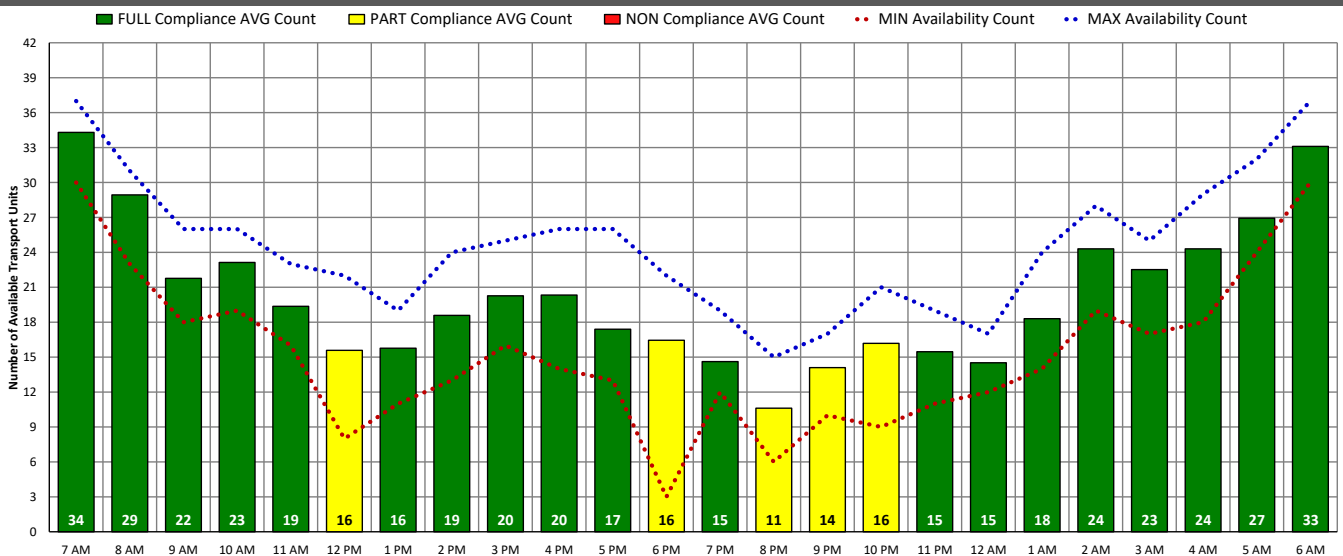
ALS Transport Unit Availability Compliance (SAT – 04/29/23)



BLS Transport Unit Availability Compliance (SAT – 04/29/23)

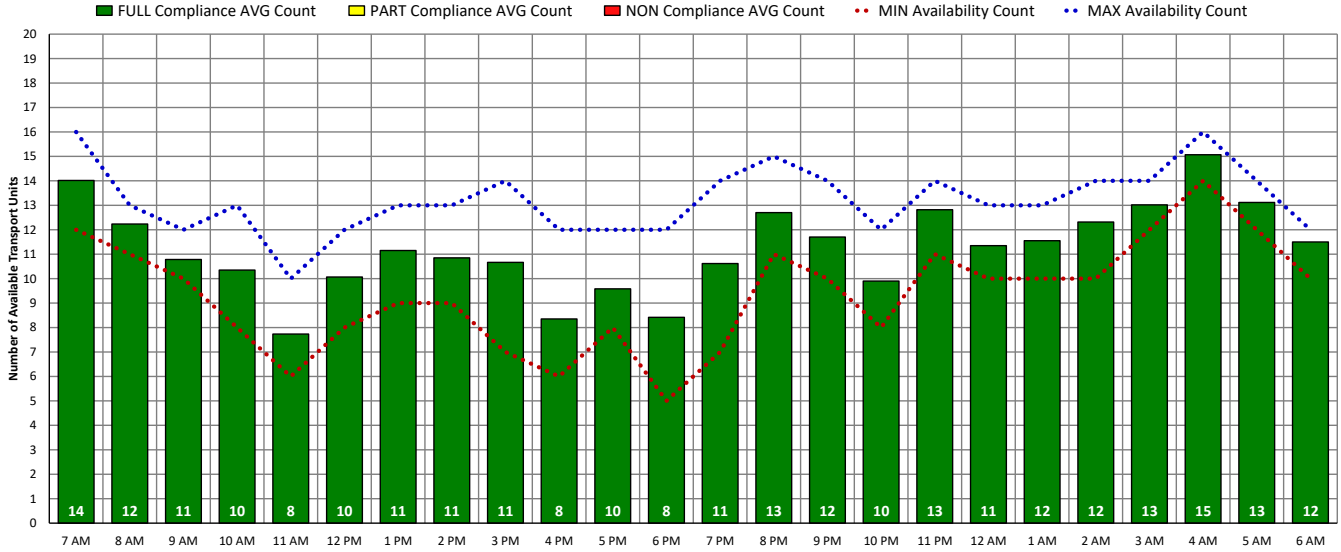


ALL Transport Unit Availability Compliance (SAT – 04/29/23)

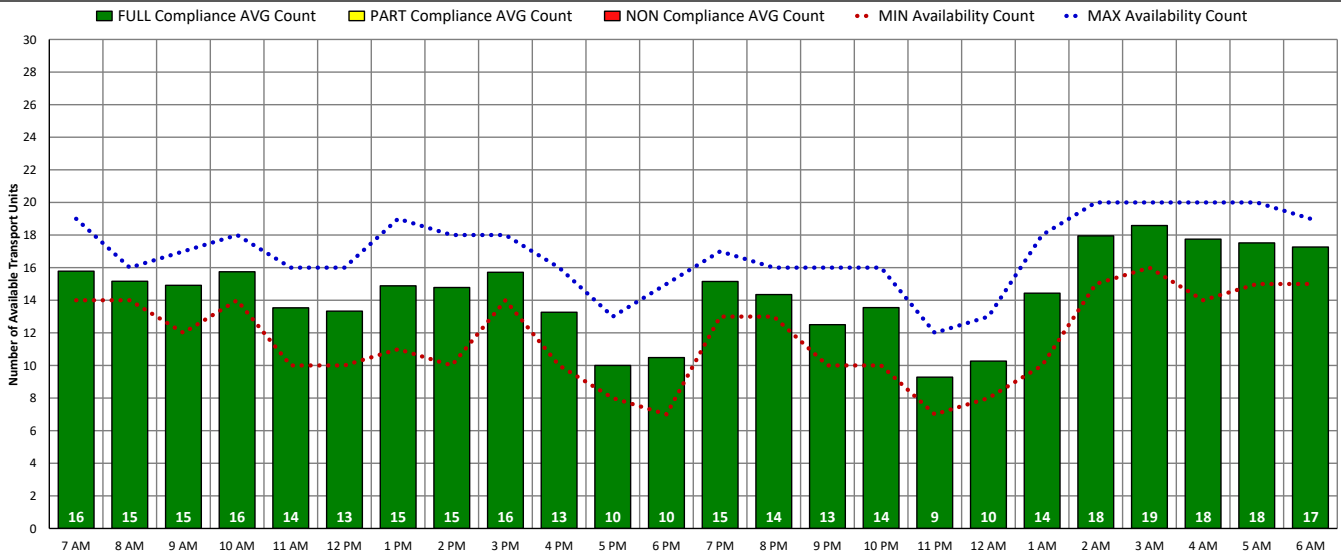


DISTRICT OF COLUMBIA FIRE AND EMS DEPARTMENT

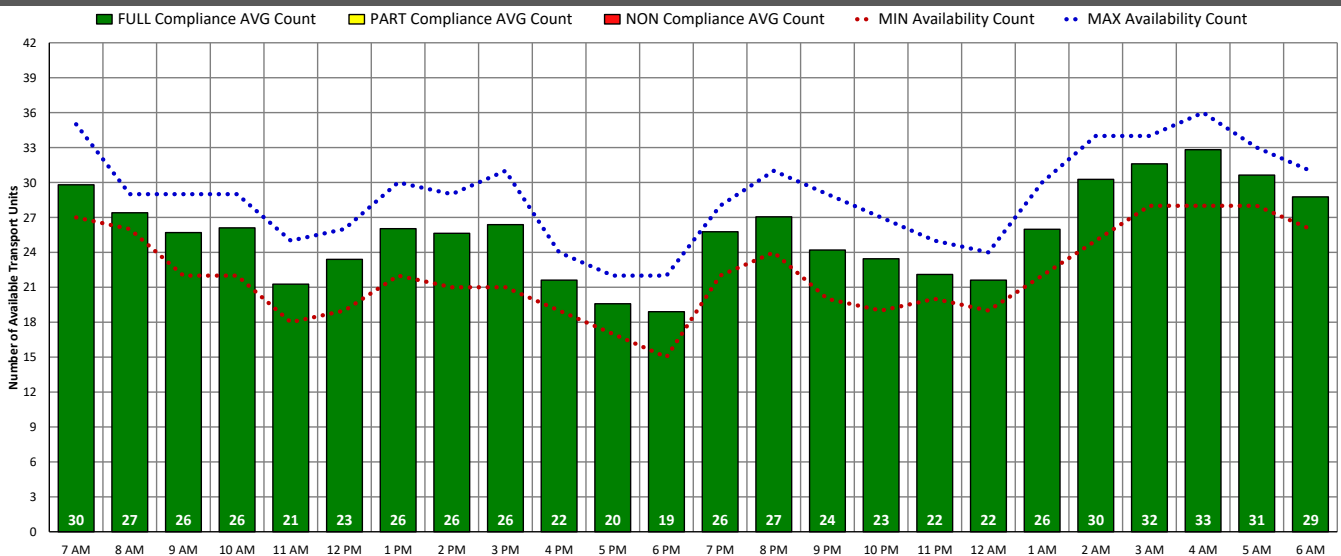
ALS Transport Unit Availability Compliance (SUN – 04/30/23)



BLS Transport Unit Availability Compliance (SUN – 04/30/23)

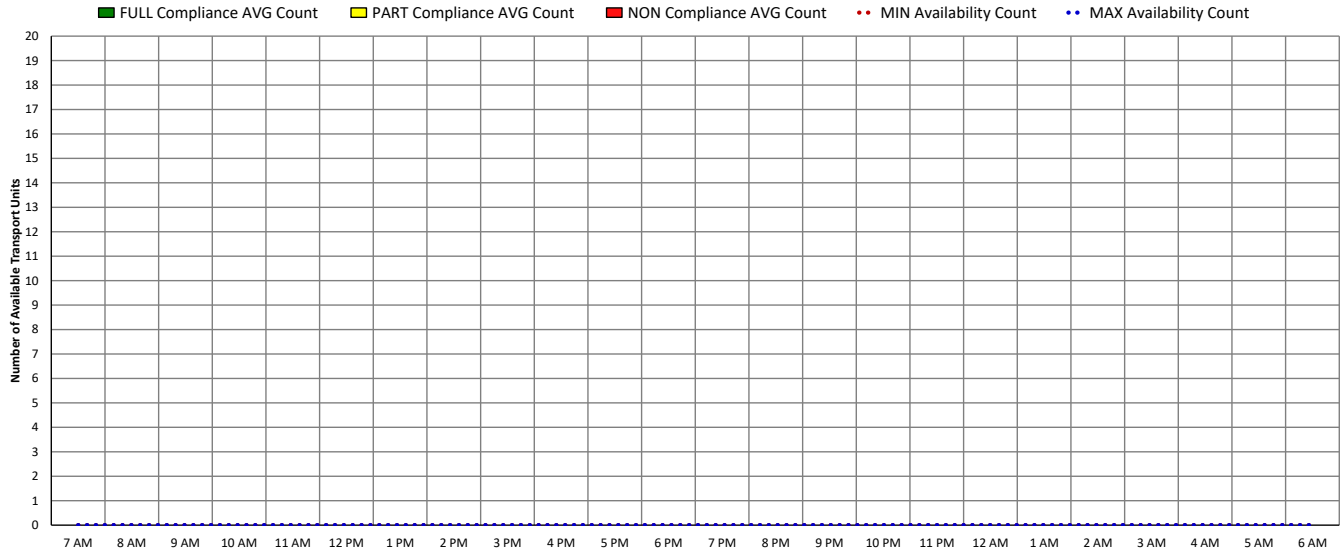


ALL Transport Unit Availability Compliance (SUN – 04/30/23)

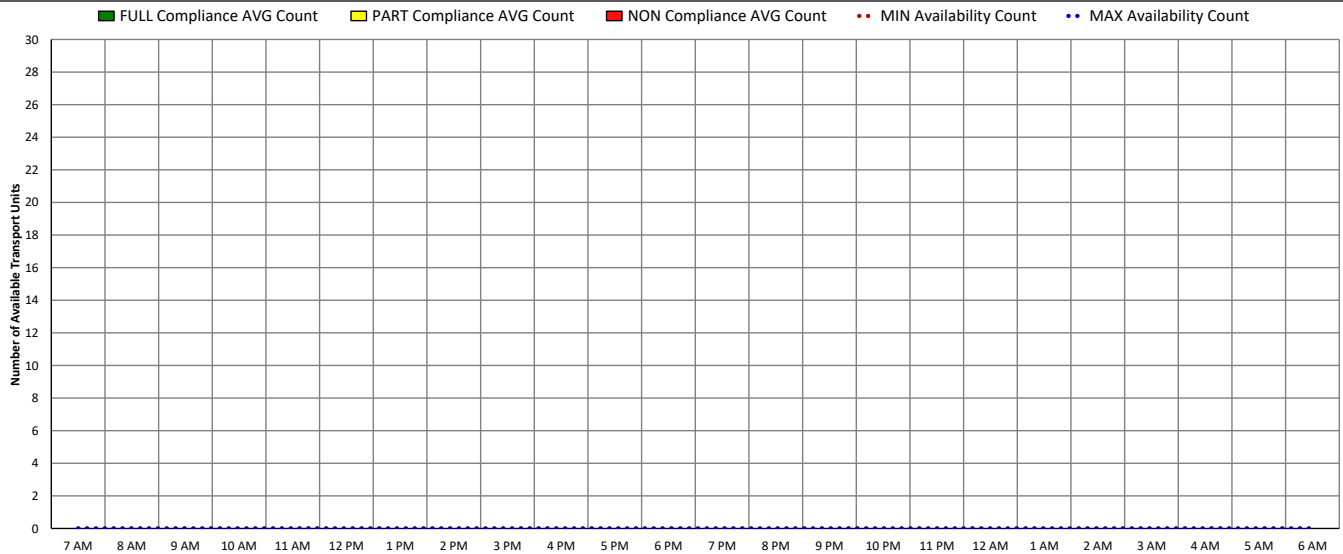


DISTRICT OF COLUMBIA FIRE AND EMS DEPARTMENT

NO DATA



NO DATA



NO DATA

