

# DISTRICT OF COLUMBIA FIRE AND EMS DEPARTMENT



## Transport Unit Availability Compliance ALL DAYS (DEC-21)

PRODUCED ON: 12/20/2022

DAYS and MONTH		FULL ALS BLS ALL	PART ALS BLS ALL	NON ALS BLS ALL	PAGE
ALL DAYS (DEC-21)		79%   71%   84%	21%   27%   16%	0%   2%   0%	2

DATE (OPS)	DOW (OPS)	ALS FULL PART NON	BLS FULL PART NON	ALL FULL PART NON	PAGE
12/01/21	WED	83%   17%   0%	75%   21%   4%	83%   17%   0%	3
12/02/21	THU	83%   17%   0%	46%   54%   0%	83%   17%   0%	4
12/03/21	FRI	88%   13%   0%	75%   25%   0%	96%   4%   0%	5
12/04/21	SAT	75%   25%   0%	92%   8%   0%	100%   0%   0%	6
12/05/21	SUN	96%   4%   0%	96%   4%   0%	100%   0%   0%	7
12/06/21	MON	83%   17%   0%	92%   8%   0%	96%   4%   0%	8
12/07/21	TUE	54%   46%   0%	50%   50%   0%	58%   42%   0%	9
12/08/21	WED	79%   21%   0%	83%   17%   0%	92%   8%   0%	10
12/09/21	THU	75%   25%   0%	88%   13%   0%	100%   0%   0%	11
12/10/21	FRI	88%   13%   0%	58%   42%   0%	83%   17%   0%	12
12/11/21	SAT	92%   8%   0%	83%   13%   4%	92%   8%   0%	13
12/12/21	SUN	100%   0%   0%	88%   13%   0%	100%   0%   0%	14
12/13/21	MON	54%   46%   0%	79%   21%   0%	79%   21%   0%	15
12/14/21	TUE	71%   29%   0%	67%   33%   0%	83%   17%   0%	16
12/15/21	WED	67%   33%   0%	58%   42%   0%	67%   33%   0%	17
12/16/21	THU	58%   42%   0%	75%   25%   0%	71%   29%   0%	18
12/17/21	FRI	79%   21%   0%	54%   29%   17%	75%   21%   4%	19
12/18/21	SAT	96%   4%   0%	67%   29%   4%	96%   4%   0%	20
12/19/21	SUN	92%   8%   0%	96%   4%   0%	96%   4%   0%	21
12/20/21	MON	88%   13%   0%	83%   17%   0%	92%   8%   0%	22
12/21/21	TUE	83%   17%   0%	67%   33%   0%	88%   13%   0%	23
12/22/21	WED	67%   33%   0%	54%   38%   8%	58%   42%   0%	24
12/23/21	THU	58%   42%   0%	46%   50%   4%	54%   46%   0%	25
12/24/21	FRI	92%   8%   0%	100%   0%   0%	100%   0%   0%	26
12/25/21	SAT	100%   0%   0%	75%   25%   0%	96%   4%   0%	27
12/26/21	SUN	75%   25%   0%	42%   54%   4%	83%   17%   0%	28
12/27/21	MON	92%   8%   0%	67%   33%   0%	83%   17%   0%	29
12/28/21	TUE	54%   46%   0%	50%   29%   21%	58%   38%   4%	30
12/29/21	WED	63%   38%   0%	54%   42%   4%	71%   25%   4%	31
12/30/21	THU	92%   8%   0%	71%   29%   0%	83%   17%   0%	32
12/31/21	FRI	75%   25%   0%	75%   25%   0%	79%   21%   0%	33
ALL DAYS (DEC-21)		79%   21%   0%	71%   27%   2%	84%   16%   0%	

**START DATE**

12/01/2021

**TOTAL DAYS**

31

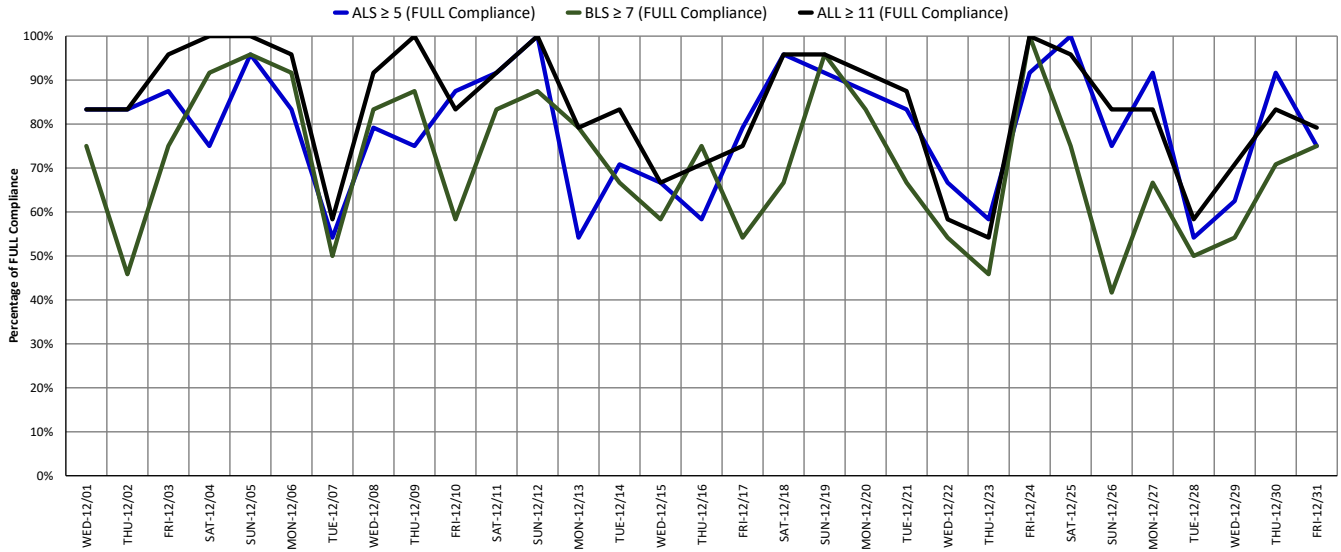
**END DATE**

12/31/2021

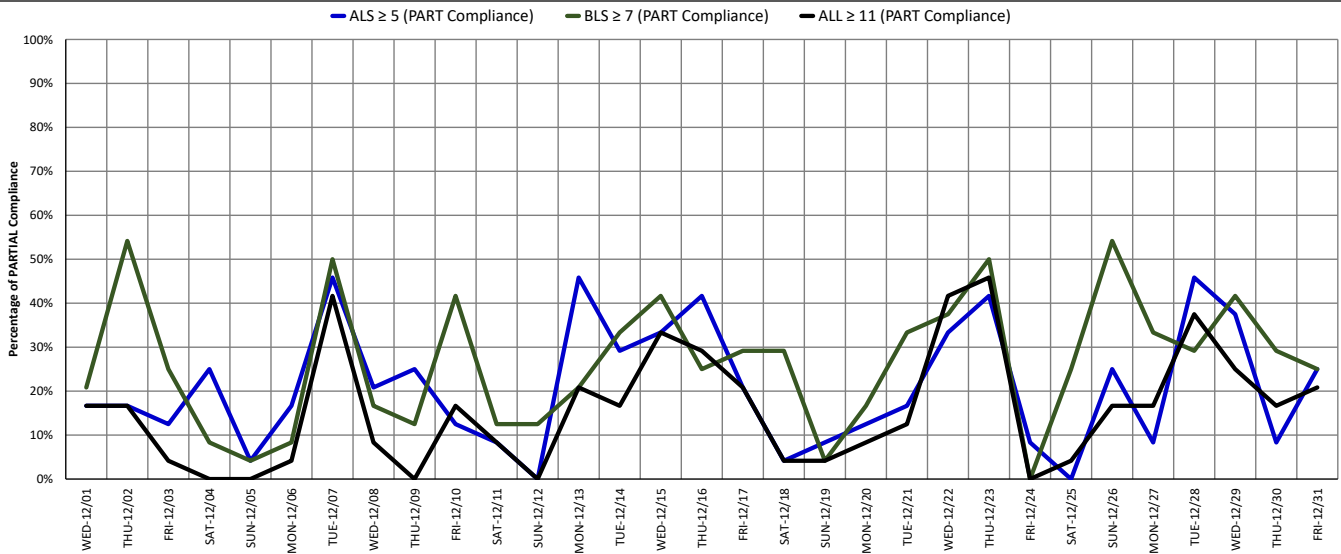
Raw Data Error: 0 HRS (0.00%)

# DISTRICT OF COLUMBIA FIRE AND EMS DEPARTMENT

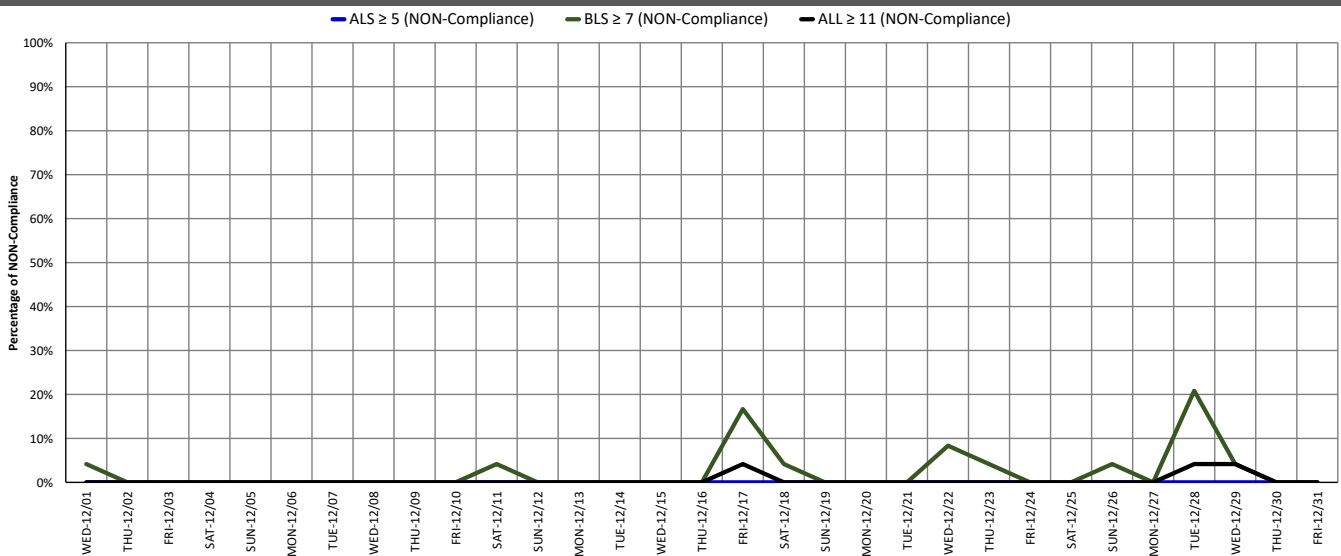
## % of Transport Unit Availability FULL Compliance: ALL DAYS (DEC-21)



## % of Transport Unit Availability PARTIAL Compliance: ALL DAYS (DEC-21)

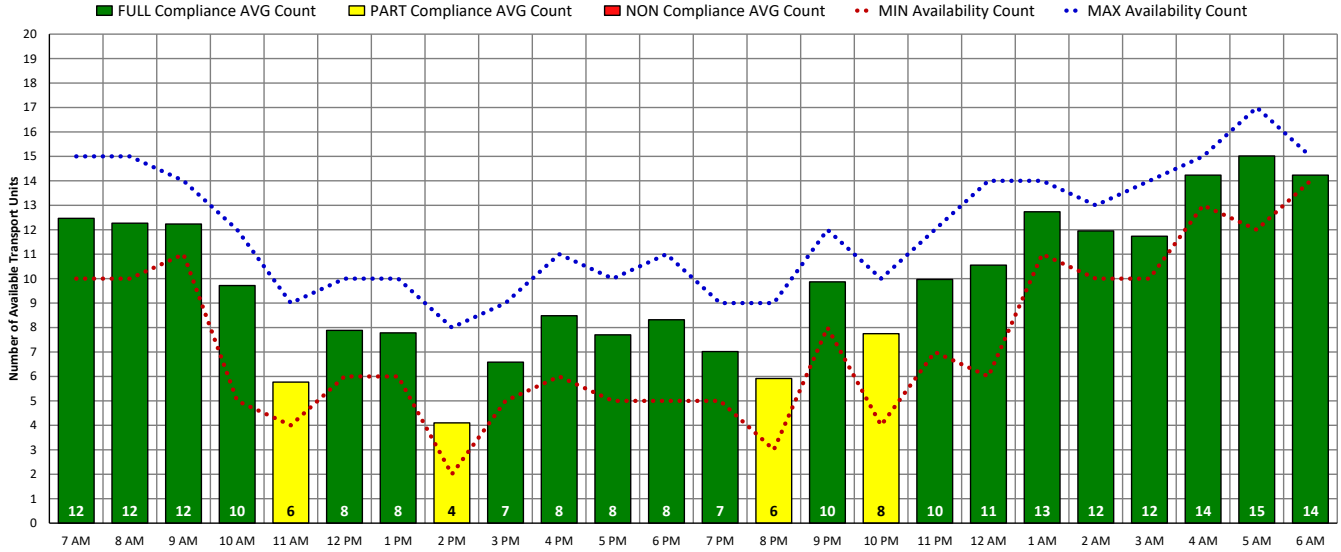


## % of Transport Unit Availability NON-Compliance: ALL DAYS (DEC-21)

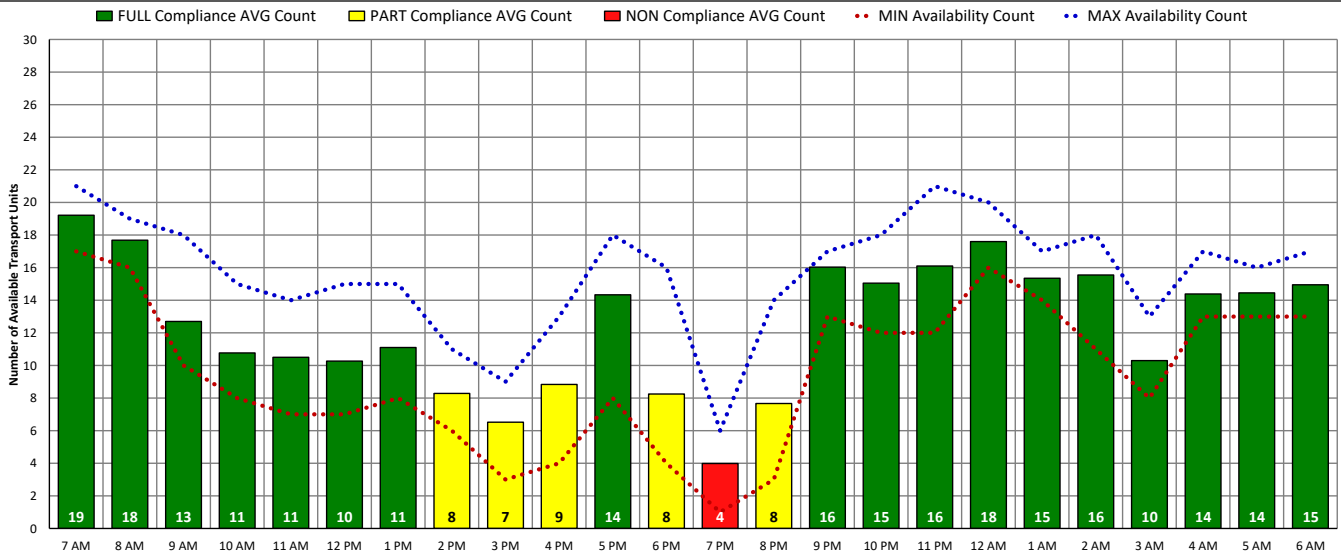


# DISTRICT OF COLUMBIA FIRE AND EMS DEPARTMENT

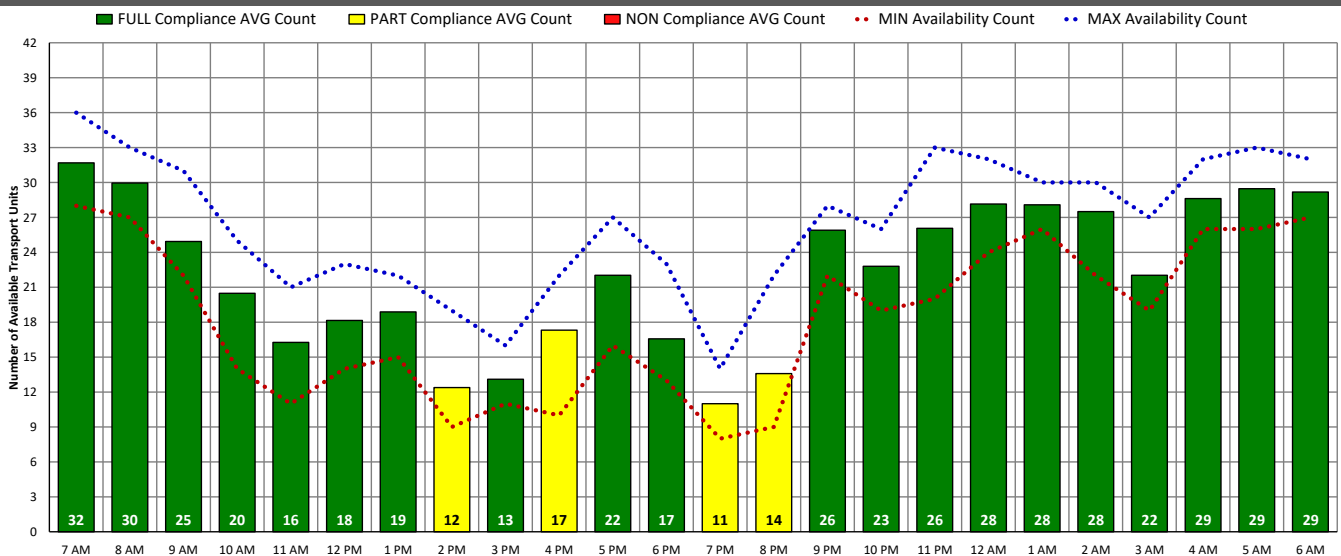
## ALS Transport Unit Availability Compliance (WED – 12/01/21)



## BLS Transport Unit Availability Compliance (WED – 12/01/21)

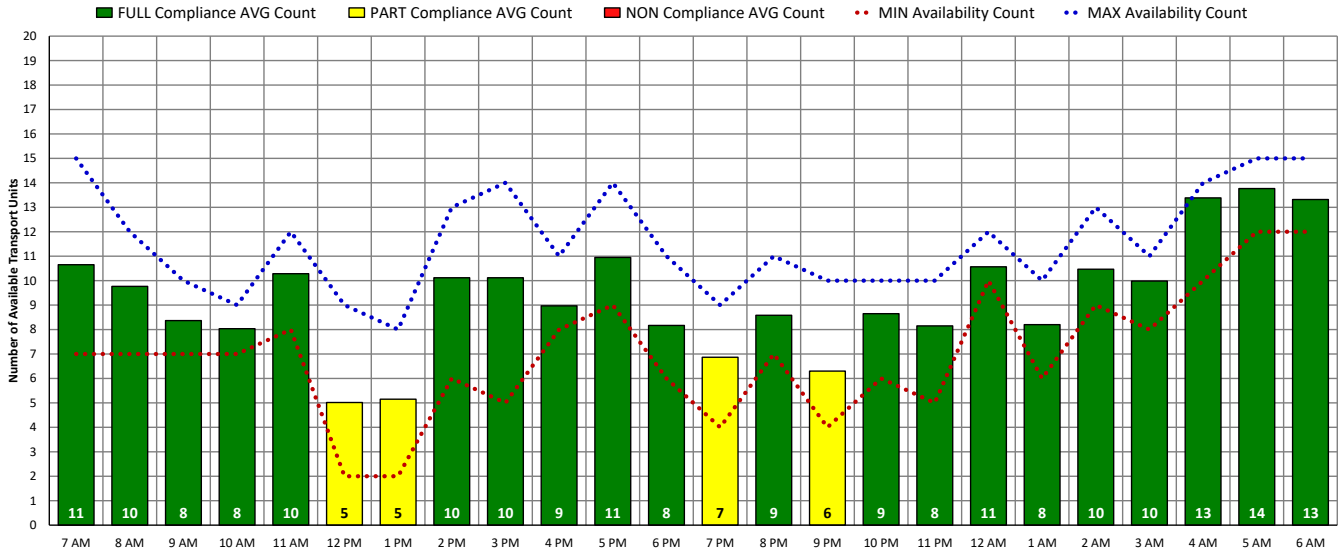


## ALL Transport Unit Availability Compliance (WED – 12/01/21)

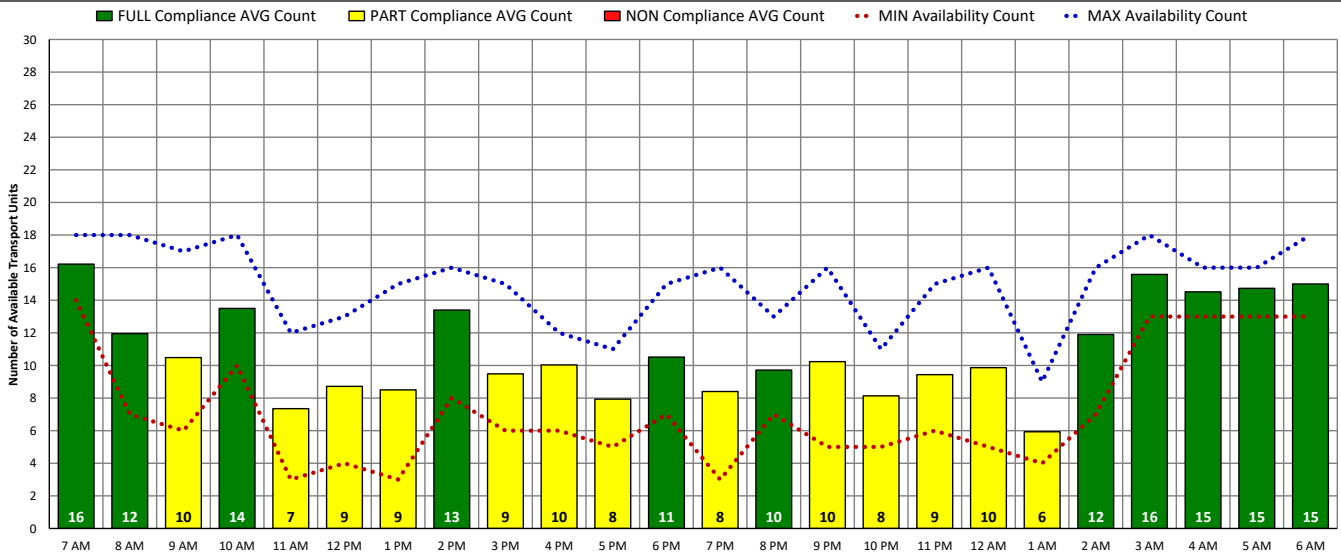


# DISTRICT OF COLUMBIA FIRE AND EMS DEPARTMENT

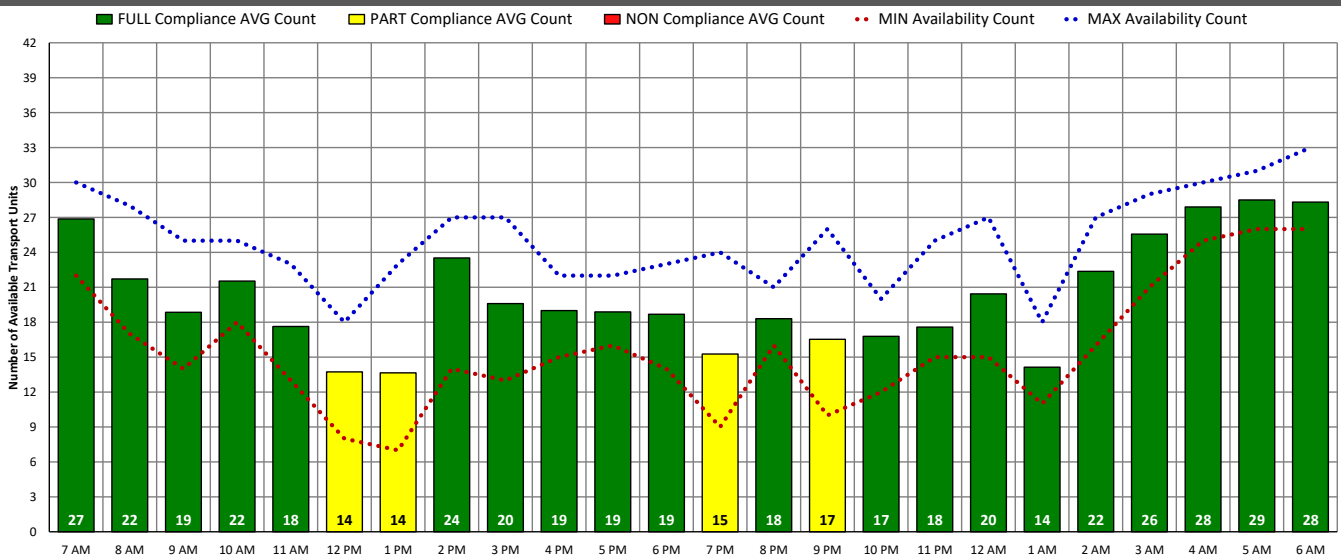
## ALS Transport Unit Availability Compliance (THU – 12/02/21)



## BLS Transport Unit Availability Compliance (THU – 12/02/21)

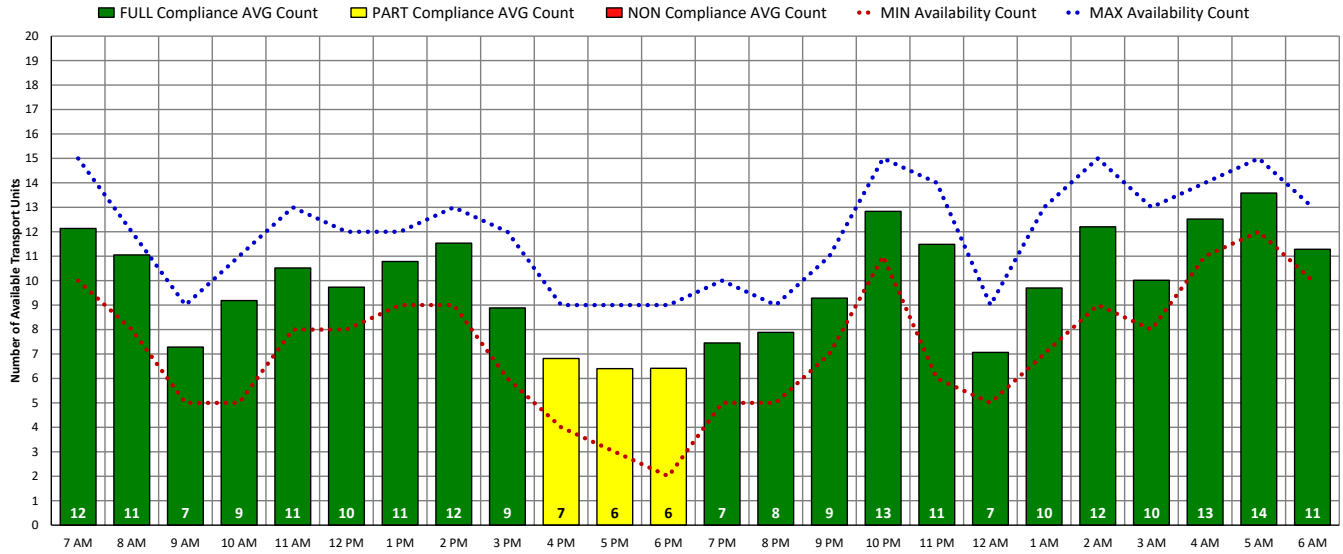


## ALL Transport Unit Availability Compliance (THU – 12/02/21)

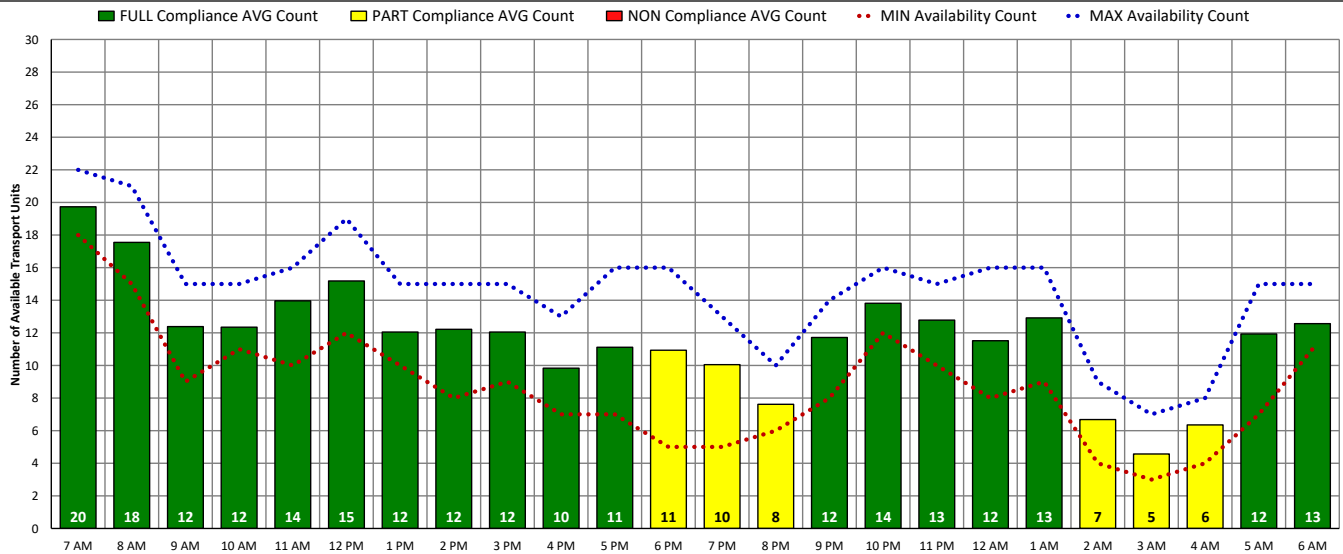


# DISTRICT OF COLUMBIA FIRE AND EMS DEPARTMENT

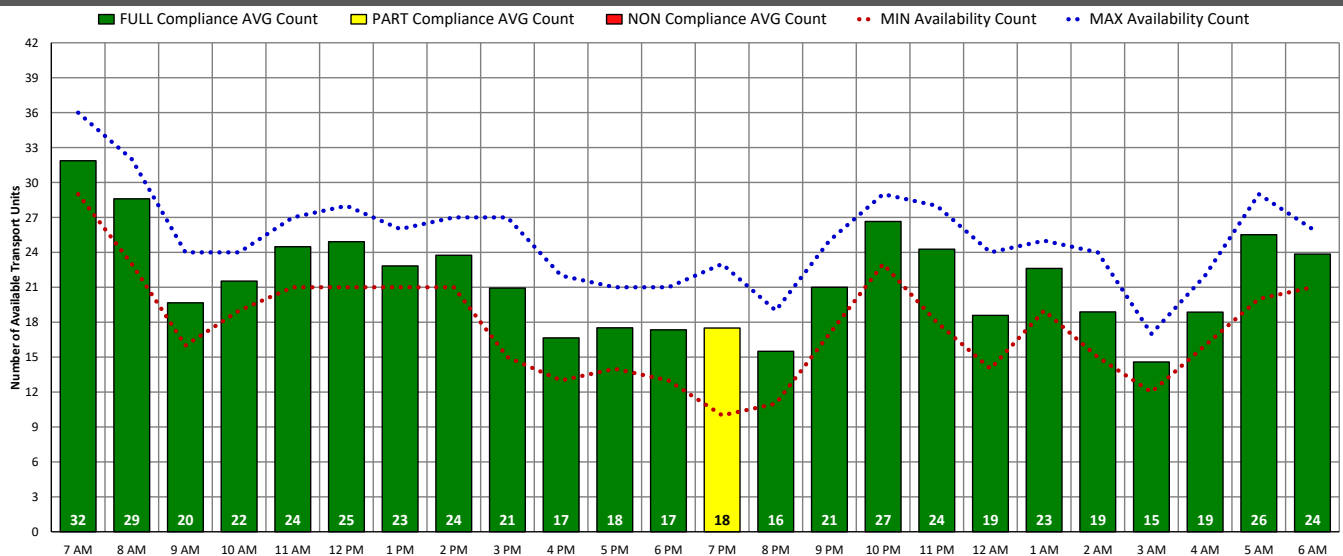
## ALS Transport Unit Availability Compliance (FRI – 12/03/21)



## BLS Transport Unit Availability Compliance (FRI – 12/03/21)

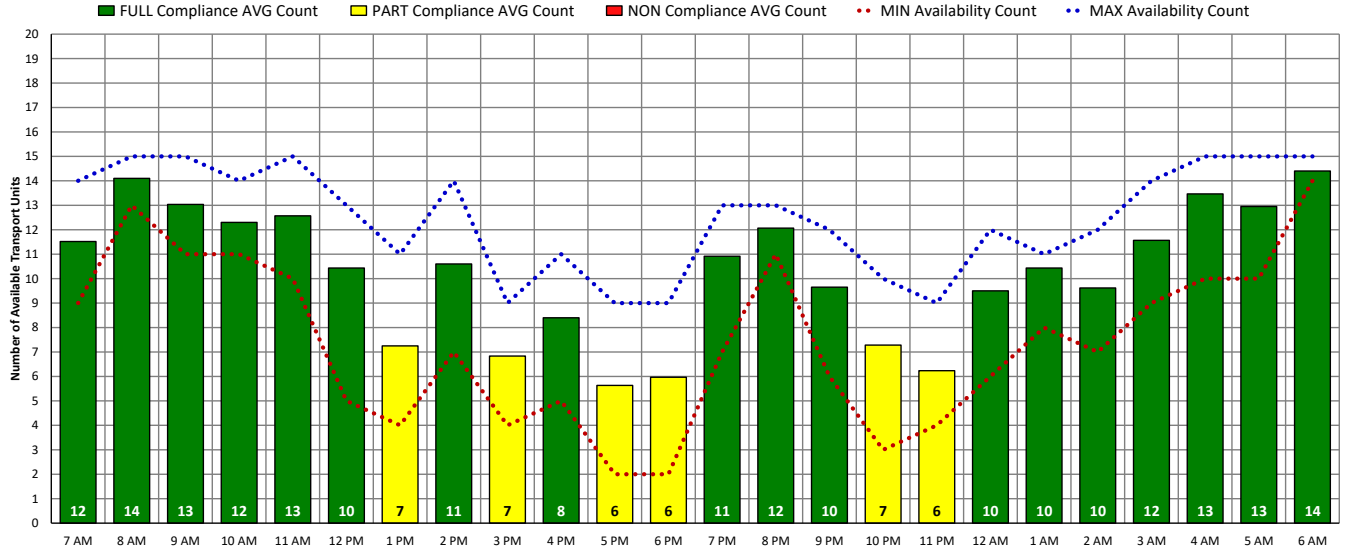


## ALL Transport Unit Availability Compliance (FRI – 12/03/21)

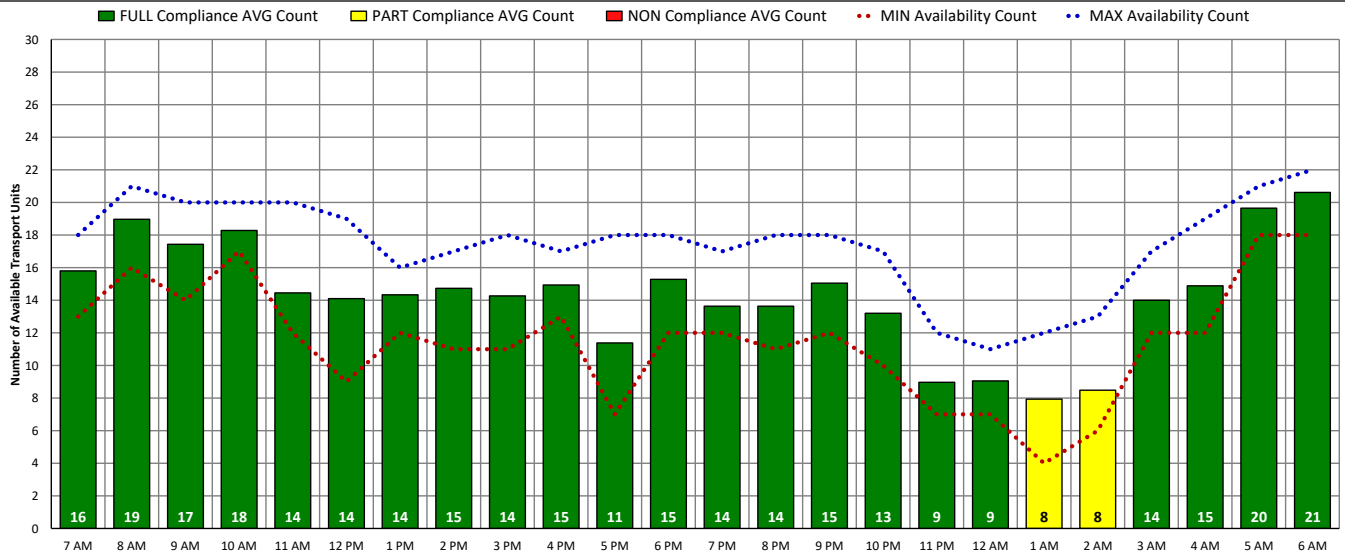


# DISTRICT OF COLUMBIA FIRE AND EMS DEPARTMENT

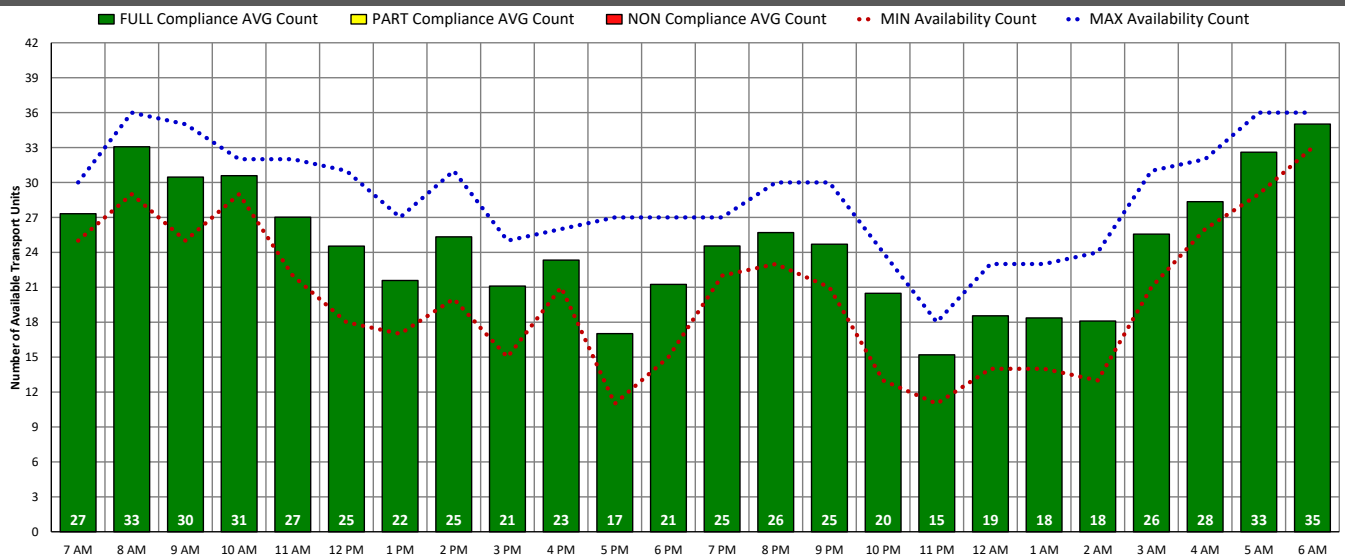
## ALS Transport Unit Availability Compliance (SAT – 12/04/21)



## BLS Transport Unit Availability Compliance (SAT – 12/04/21)

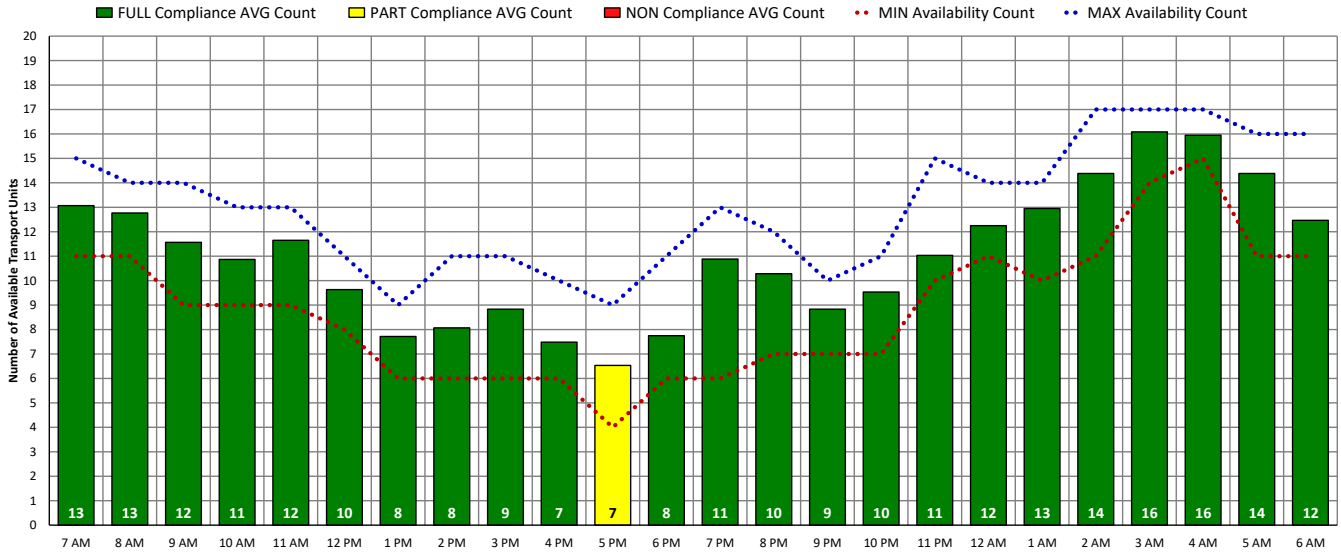


## ALL Transport Unit Availability Compliance (SAT – 12/04/21)

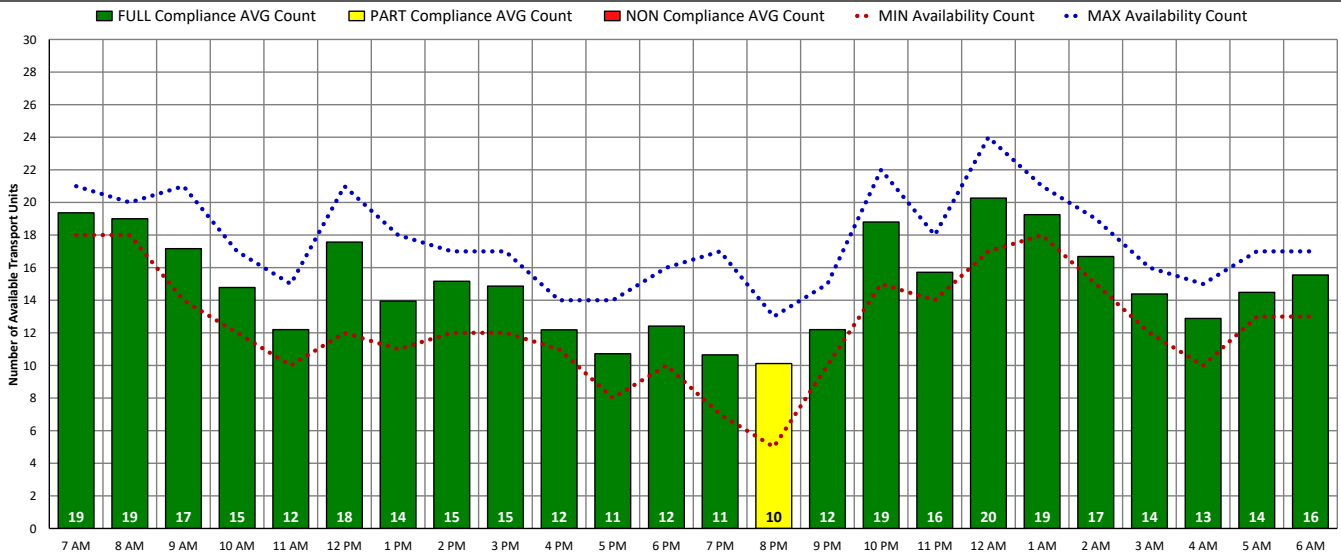


# DISTRICT OF COLUMBIA FIRE AND EMS DEPARTMENT

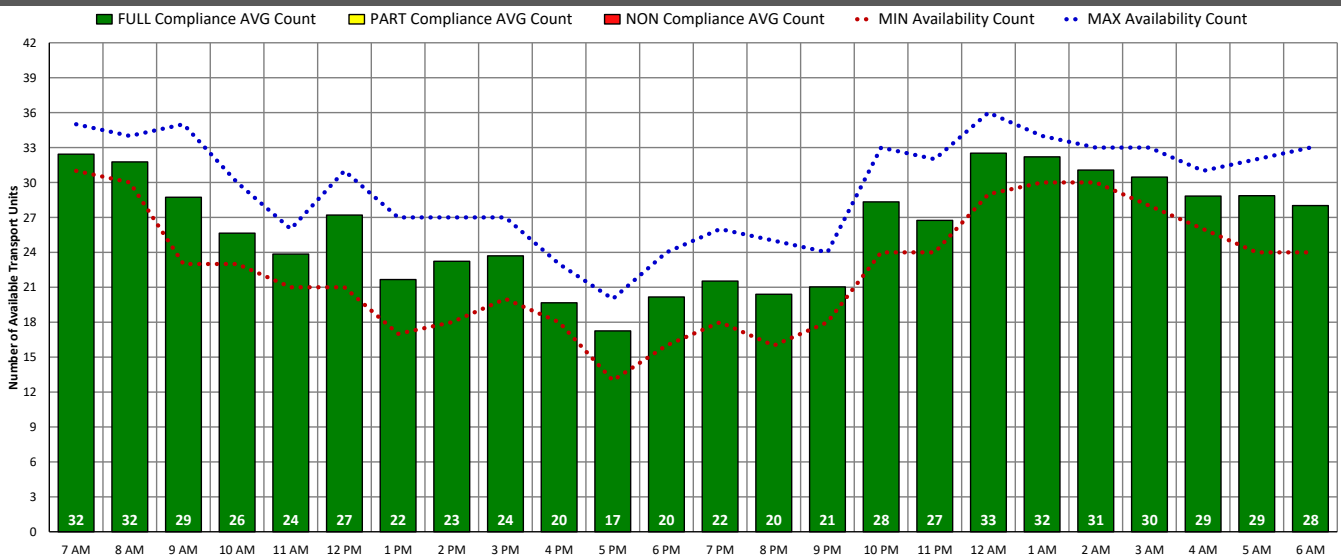
## ALS Transport Unit Availability Compliance (SUN – 12/05/21)



## BLS Transport Unit Availability Compliance (SUN – 12/05/21)

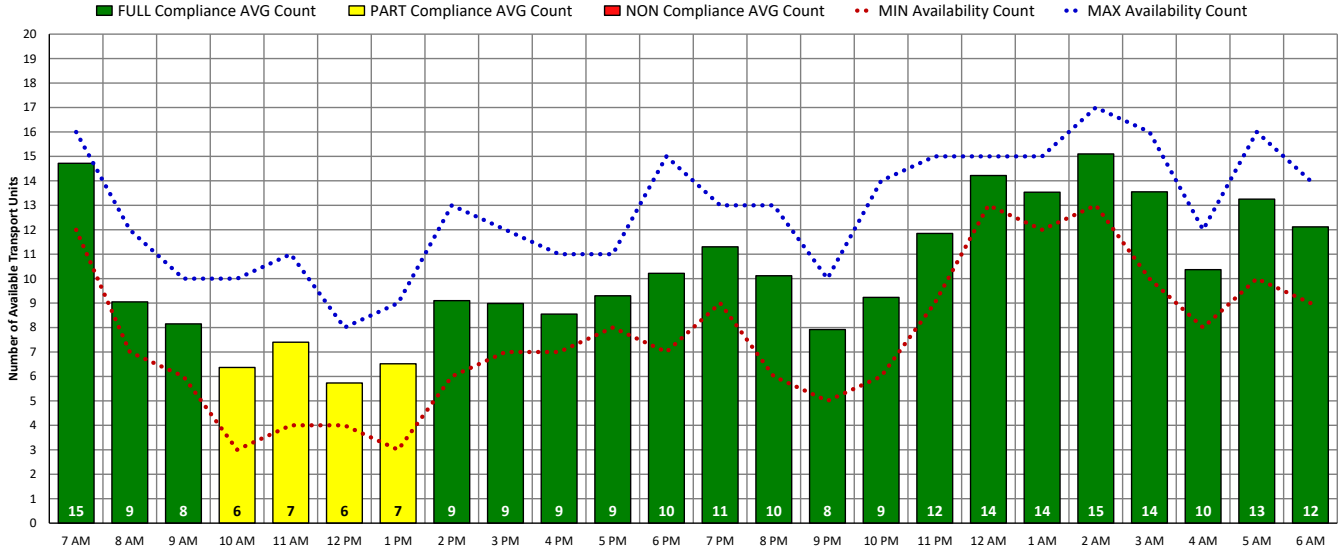


## ALL Transport Unit Availability Compliance (SUN – 12/05/21)

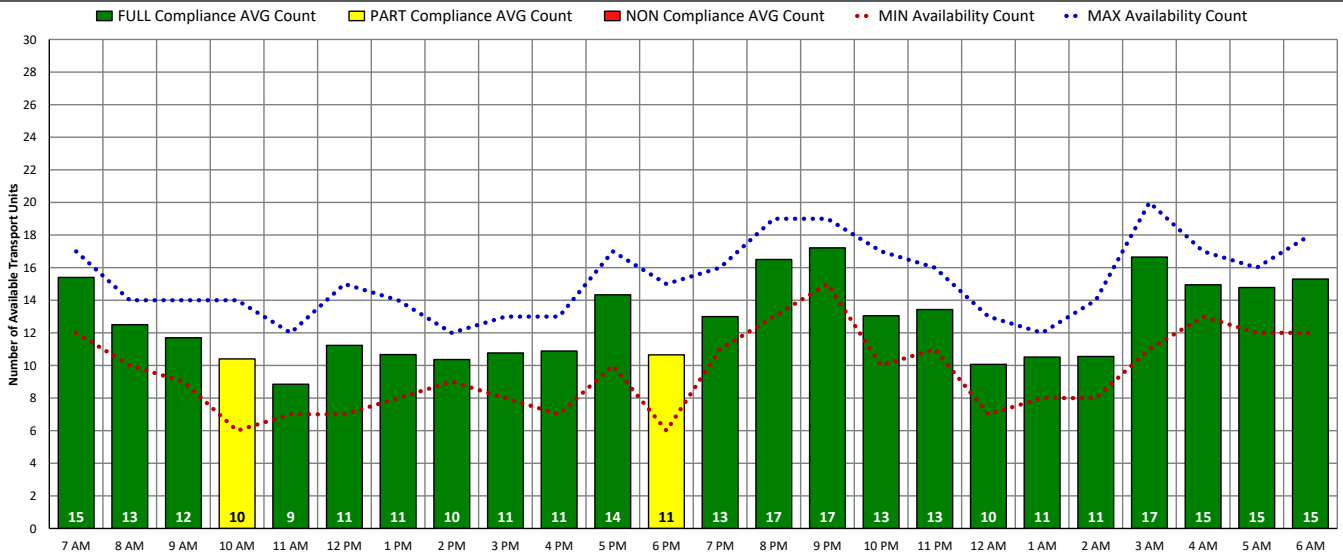


# DISTRICT OF COLUMBIA FIRE AND EMS DEPARTMENT

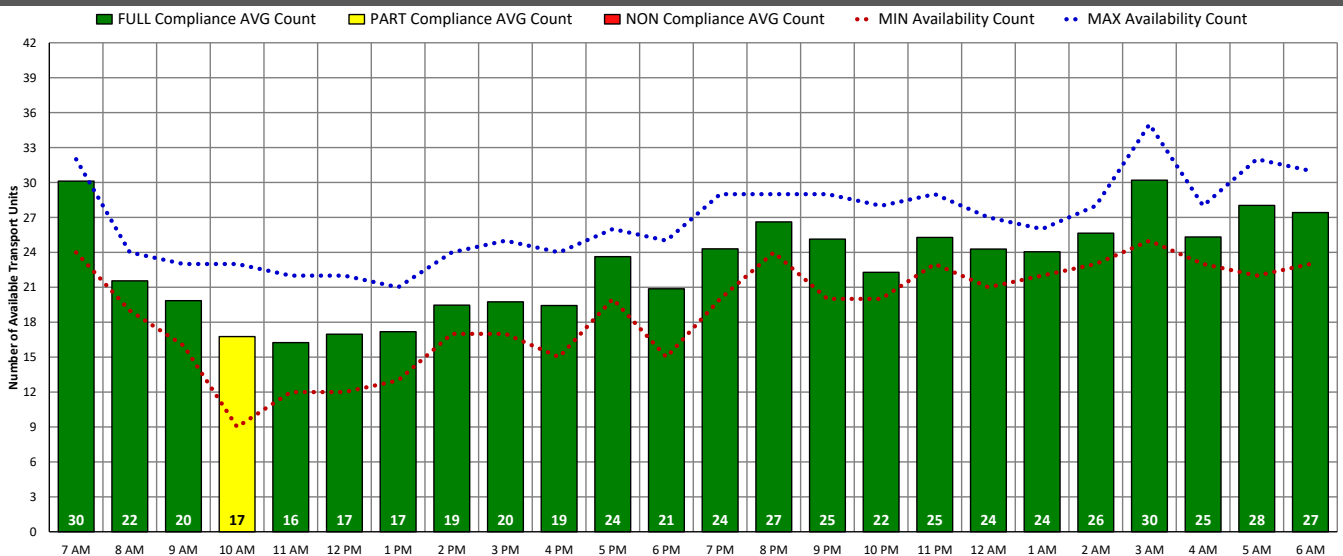
## ALS Transport Unit Availability Compliance (MON – 12/06/21)



## BLS Transport Unit Availability Compliance (MON – 12/06/21)



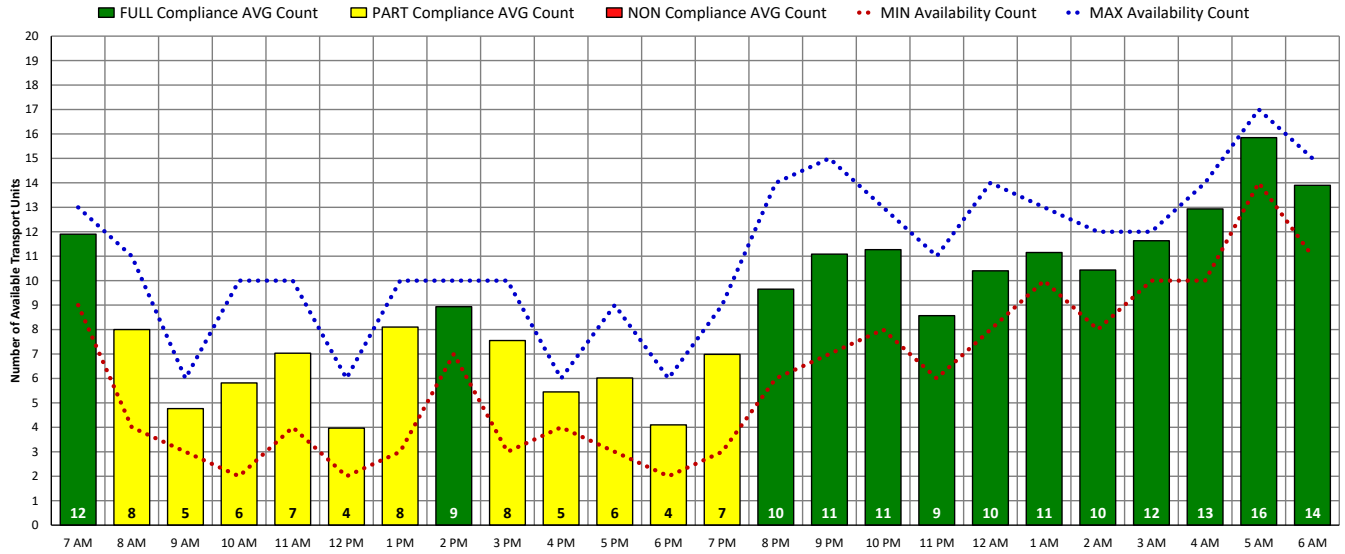
## ALL Transport Unit Availability Compliance (MON – 12/06/21)



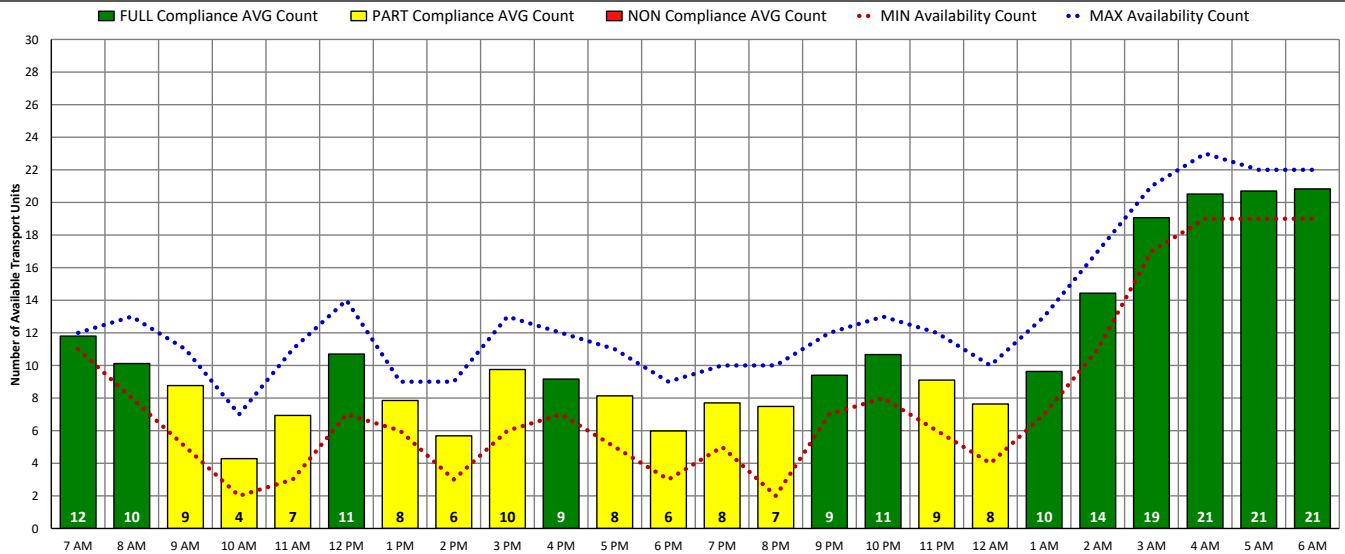


# DISTRICT OF COLUMBIA FIRE AND EMS DEPARTMENT

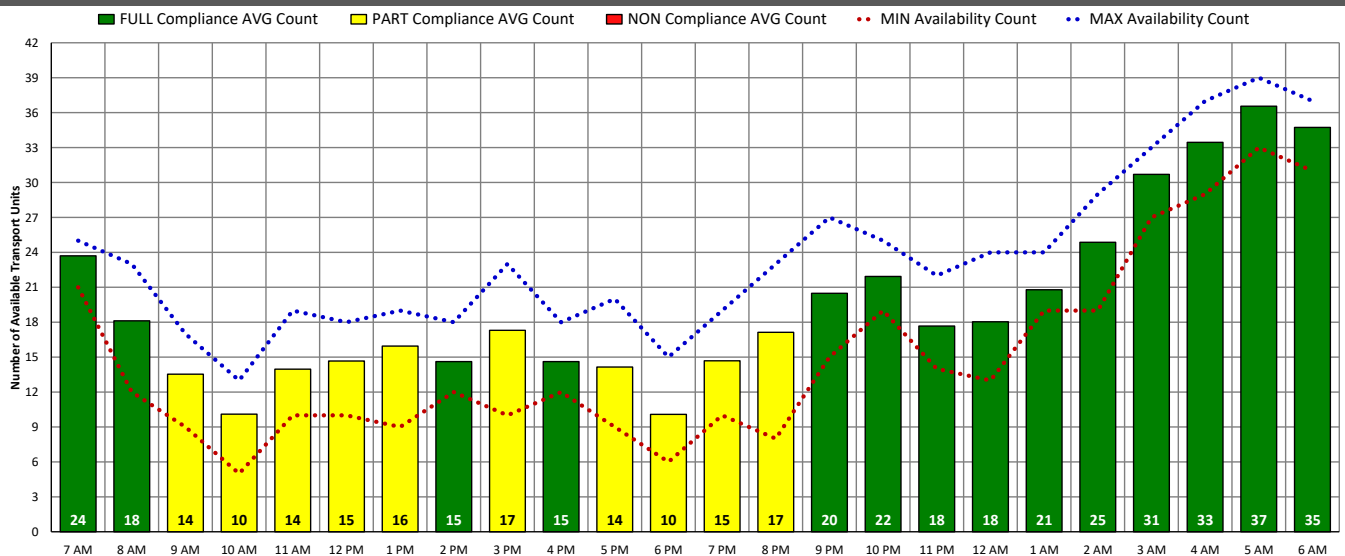
## ALS Transport Unit Availability Compliance (TUE – 12/07/21)



## BLS Transport Unit Availability Compliance (TUE – 12/07/21)

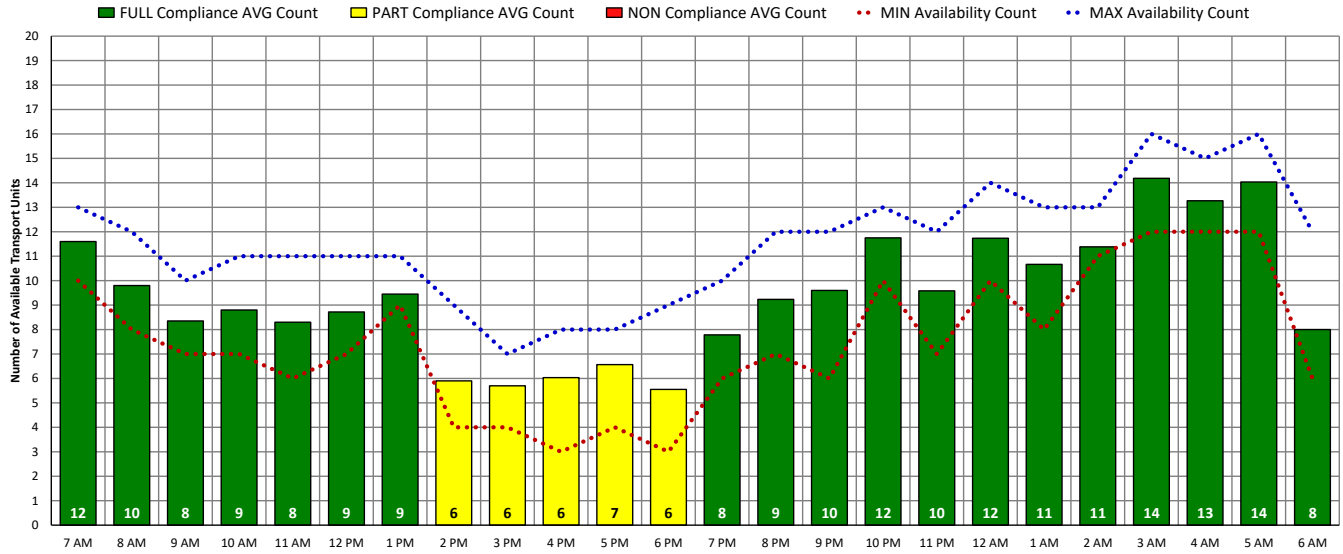


## ALL Transport Unit Availability Compliance (TUE – 12/07/21)

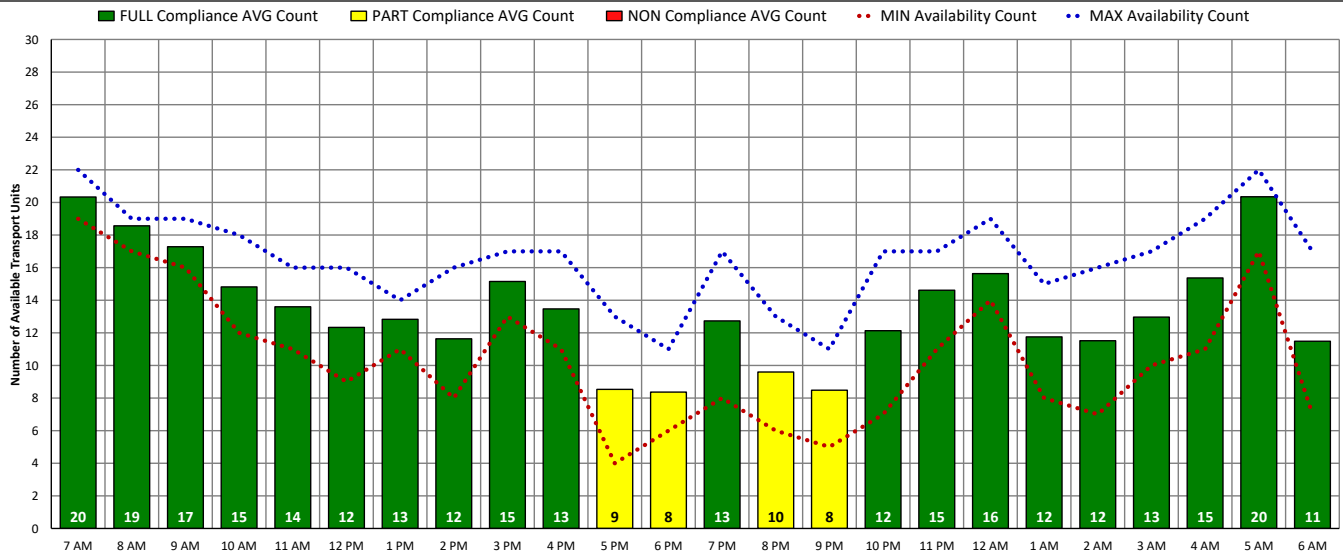


# DISTRICT OF COLUMBIA FIRE AND EMS DEPARTMENT

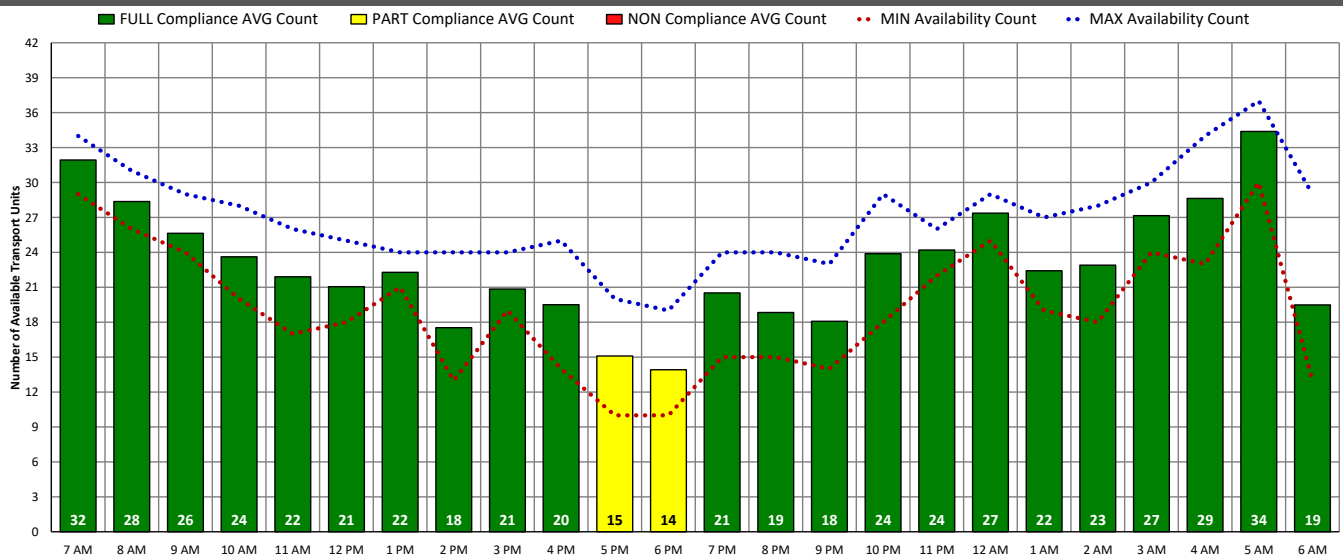
## ALS Transport Unit Availability Compliance (WED – 12/08/21)



## BLS Transport Unit Availability Compliance (WED – 12/08/21)

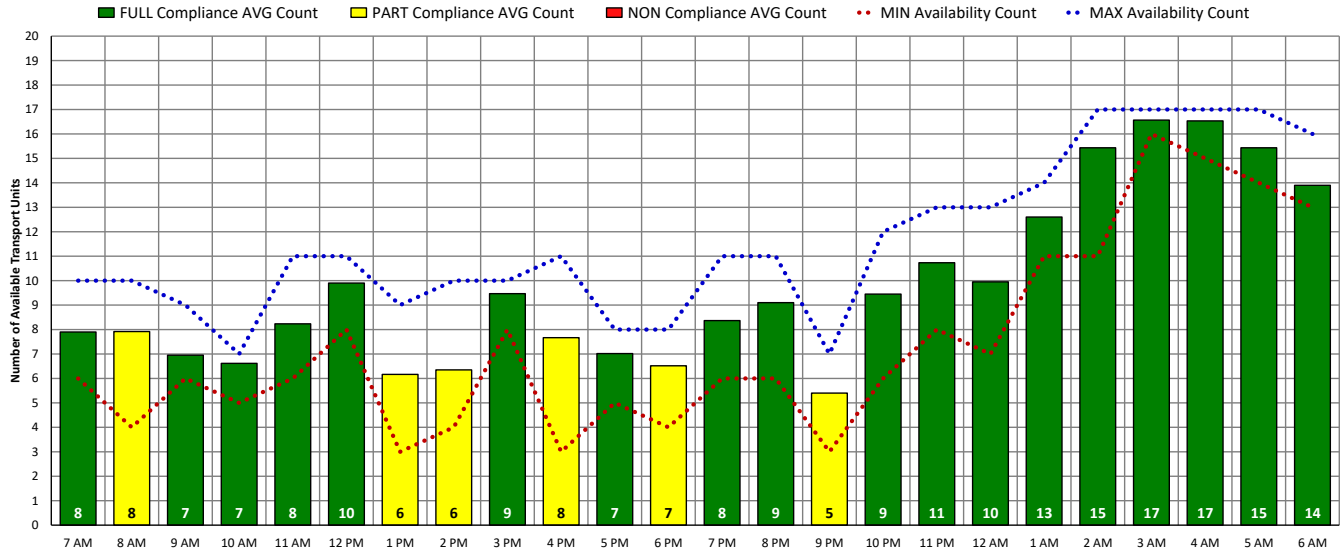


## ALL Transport Unit Availability Compliance (WED – 12/08/21)

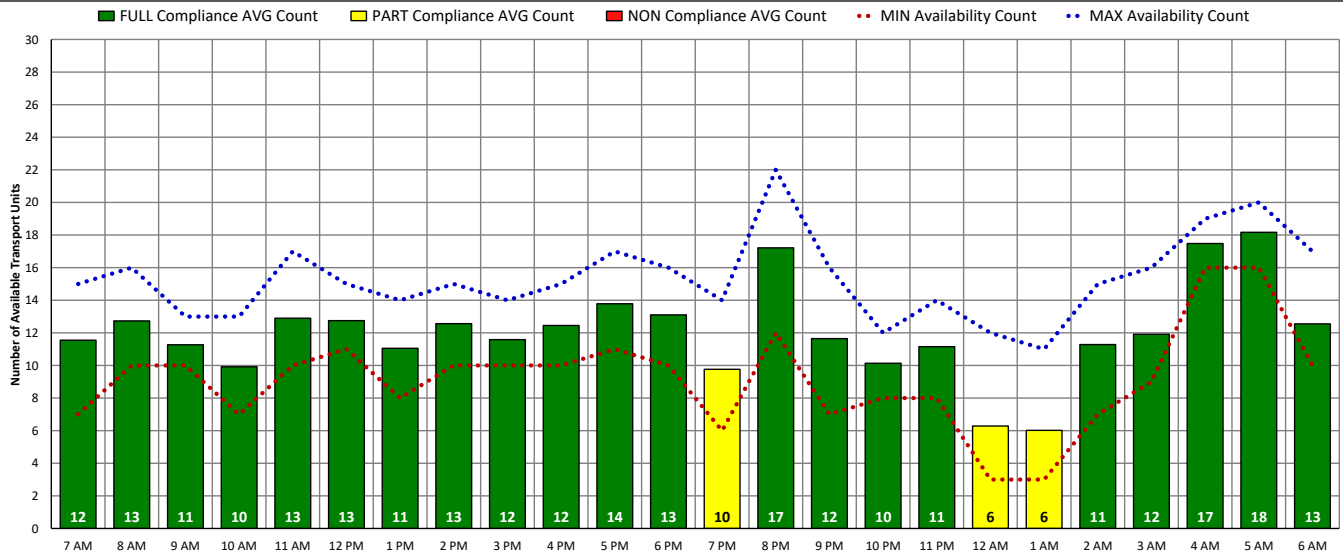


# DISTRICT OF COLUMBIA FIRE AND EMS DEPARTMENT

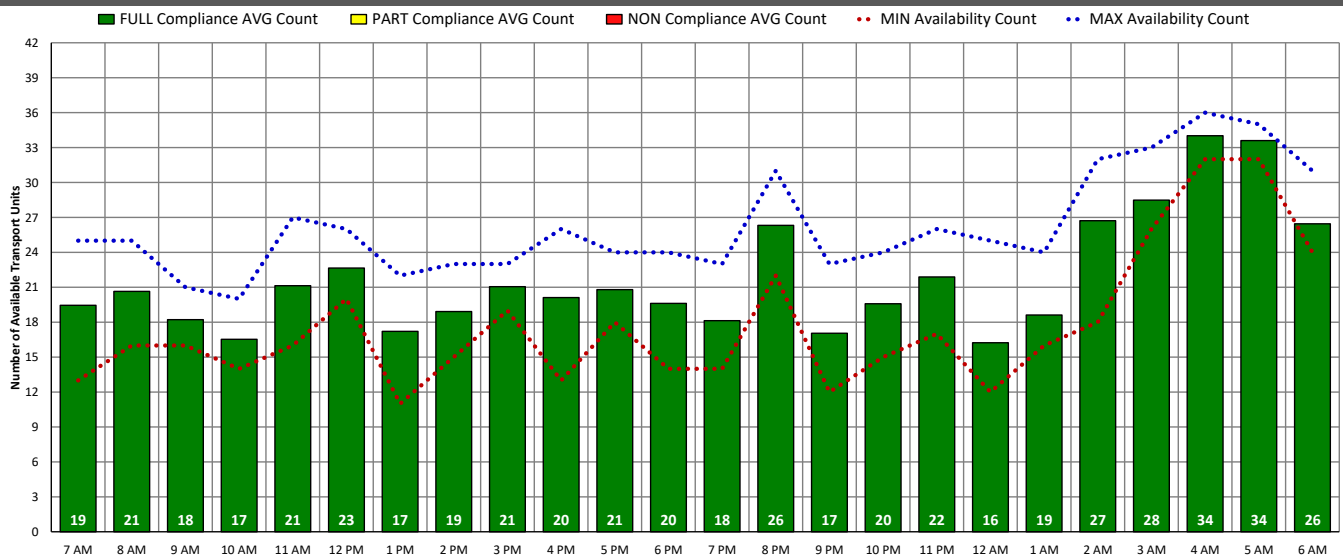
## ALS Transport Unit Availability Compliance (THU – 12/09/21)



## BLS Transport Unit Availability Compliance (THU – 12/09/21)

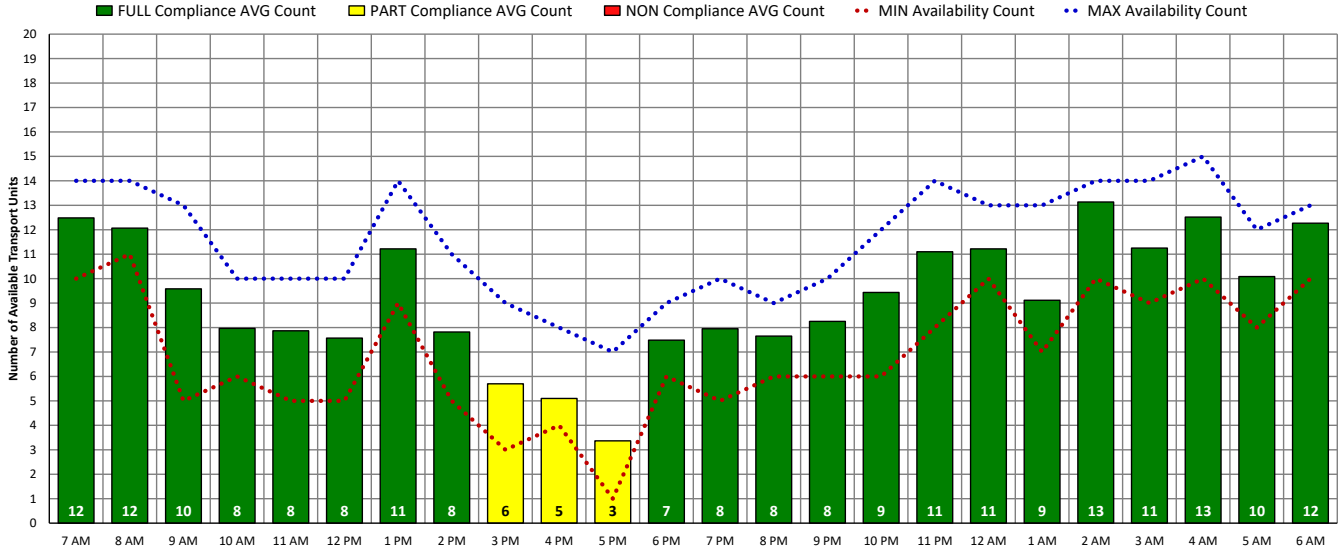


## ALL Transport Unit Availability Compliance (THU – 12/09/21)

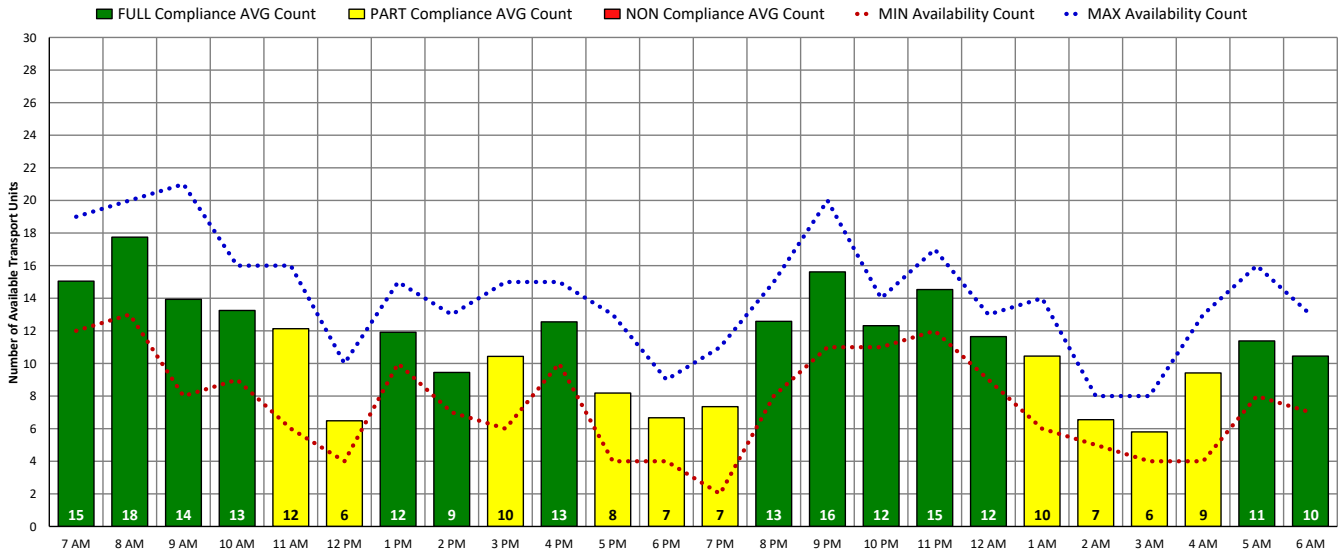


# DISTRICT OF COLUMBIA FIRE AND EMS DEPARTMENT

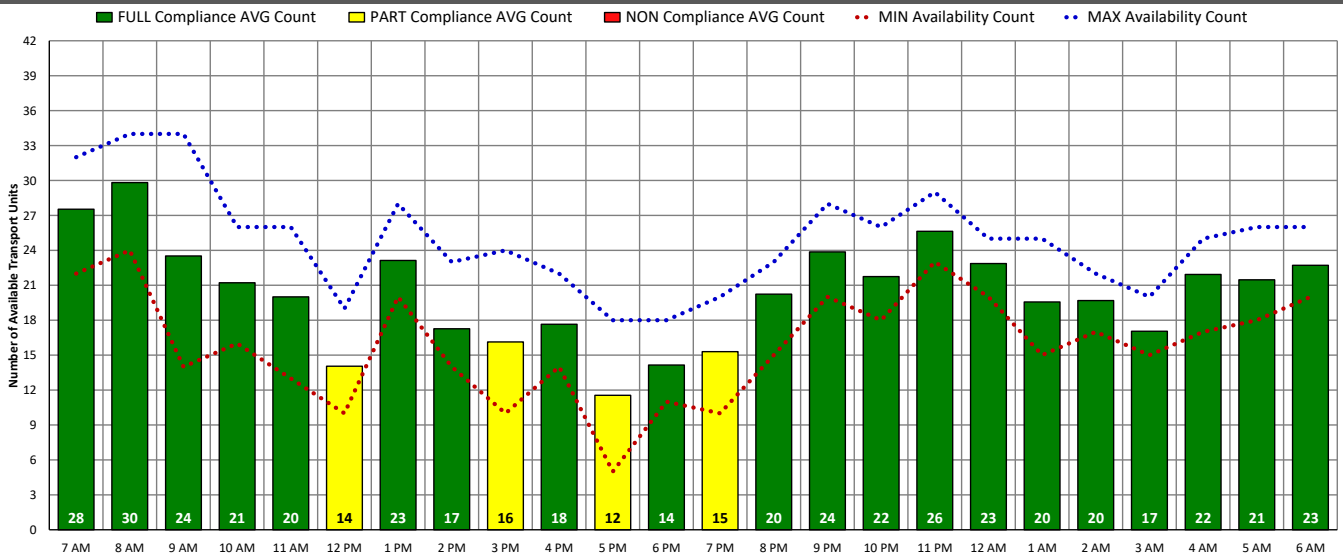
## ALS Transport Unit Availability Compliance (FRI – 12/10/21)



## BLS Transport Unit Availability Compliance (FRI – 12/10/21)

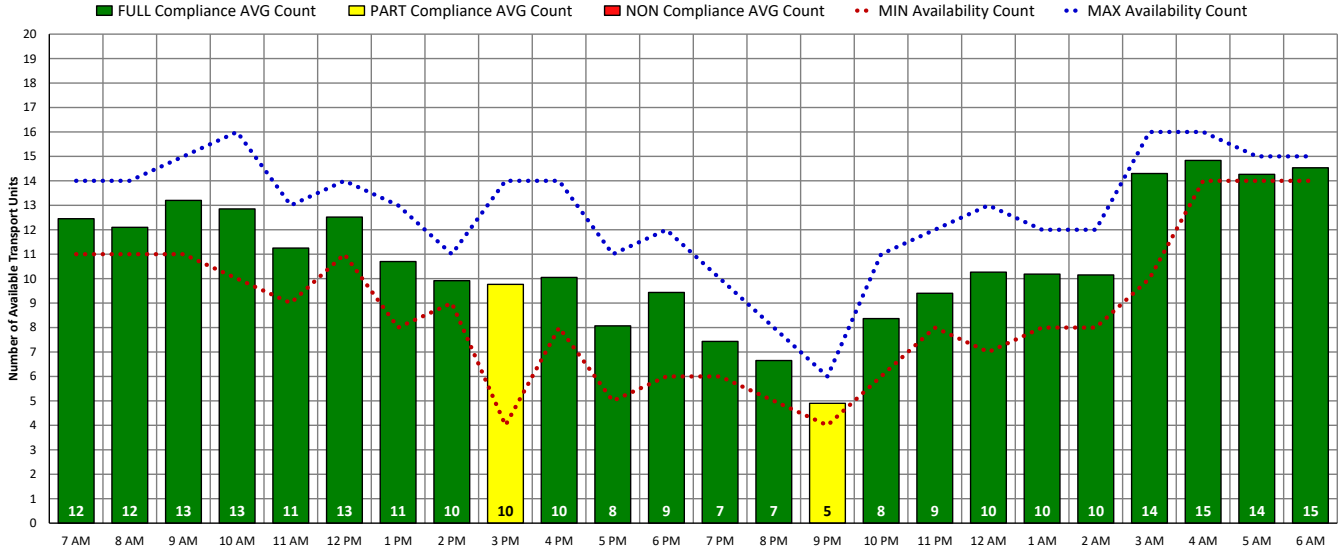


## ALL Transport Unit Availability Compliance (FRI – 12/10/21)

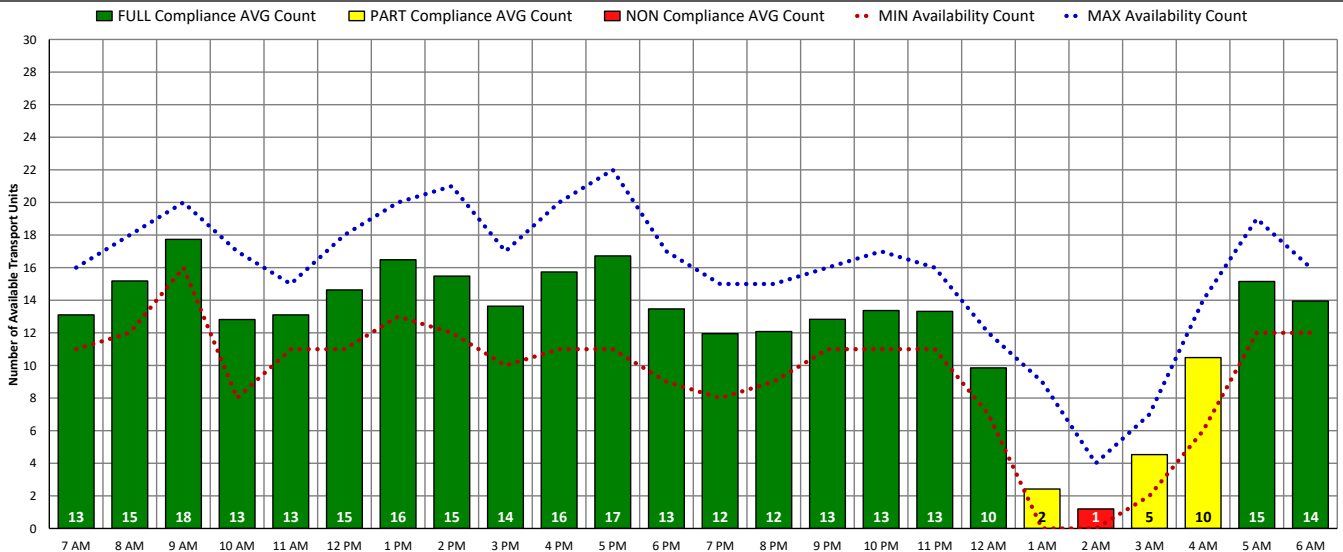


# DISTRICT OF COLUMBIA FIRE AND EMS DEPARTMENT

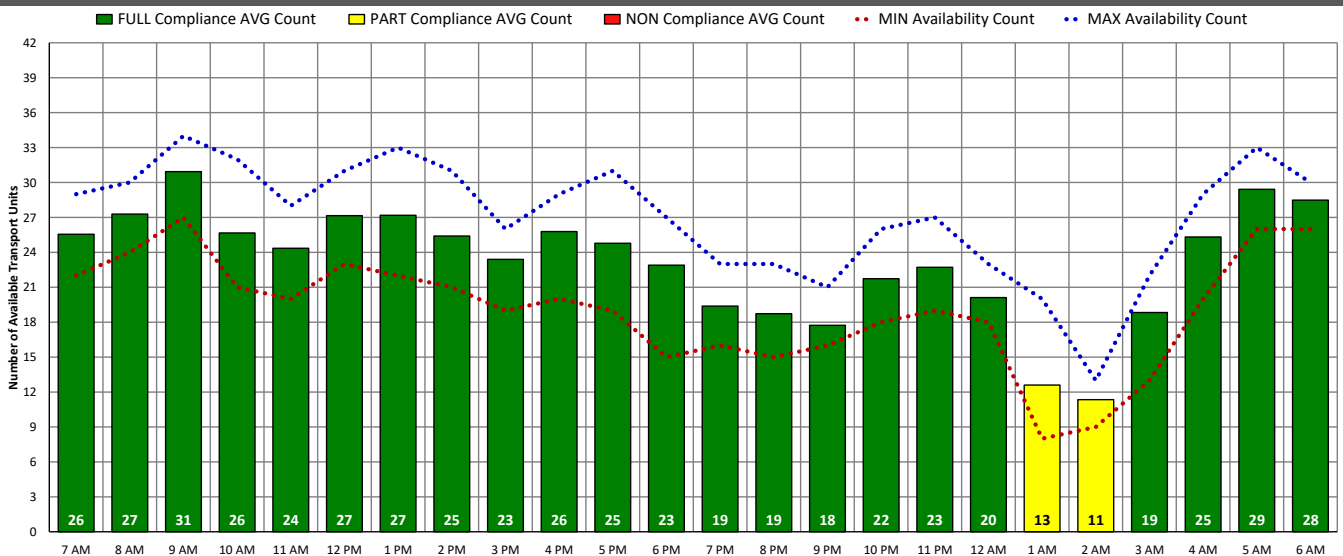
## ALS Transport Unit Availability Compliance (SAT – 12/11/21)



## BLS Transport Unit Availability Compliance (SAT – 12/11/21)

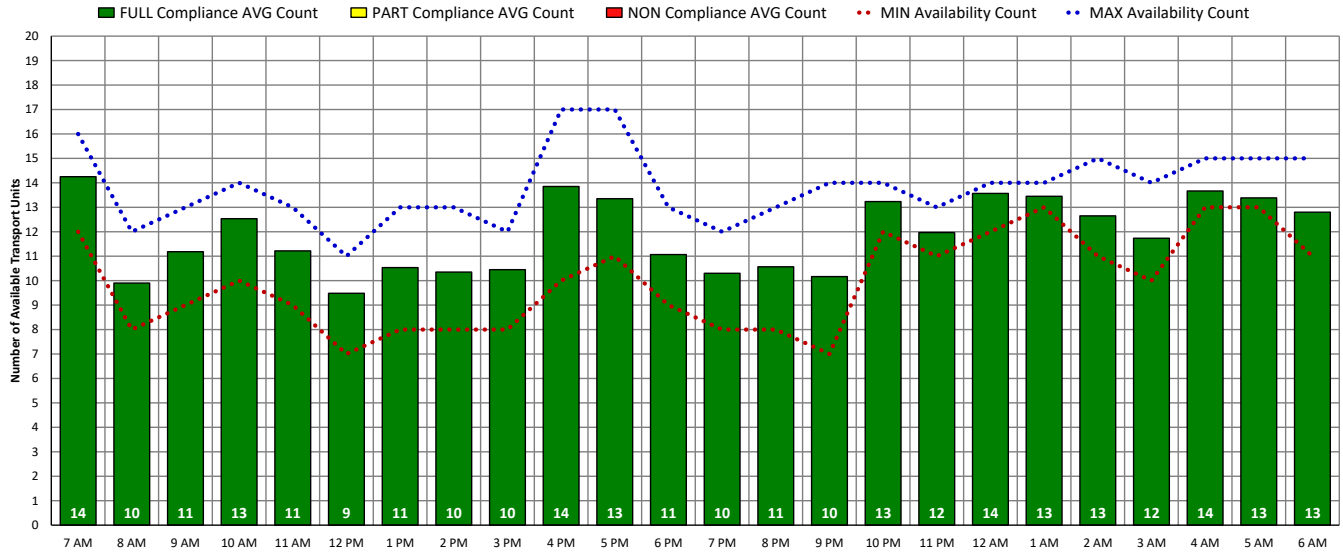


## ALL Transport Unit Availability Compliance (SAT – 12/11/21)

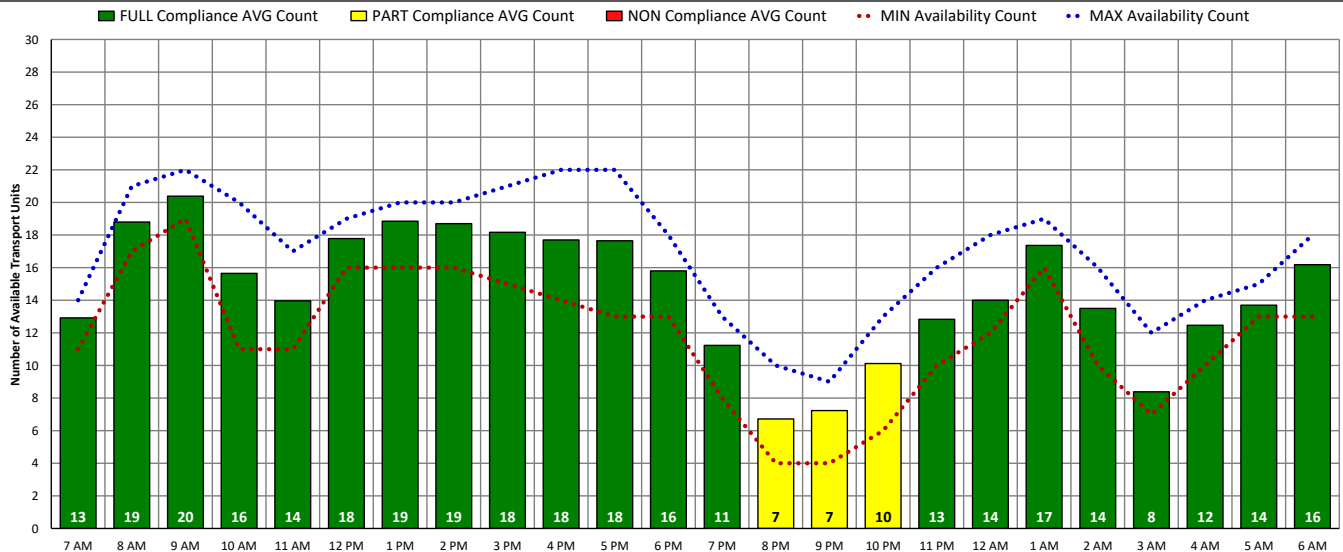


# DISTRICT OF COLUMBIA FIRE AND EMS DEPARTMENT

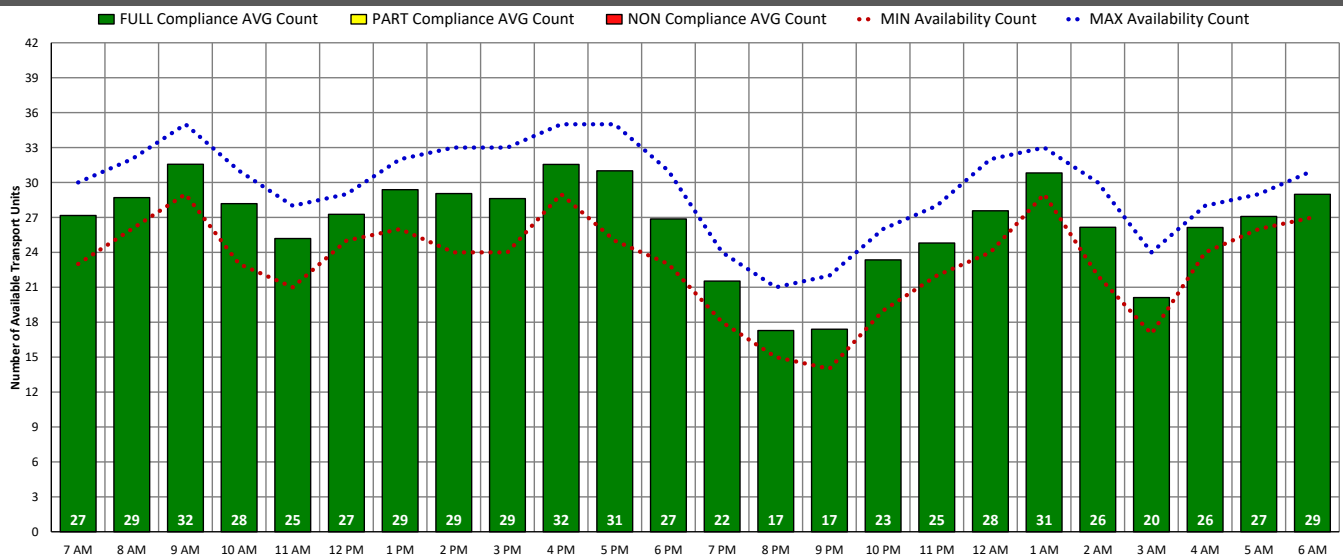
## ALS Transport Unit Availability Compliance (SUN – 12/12/21)



## BLS Transport Unit Availability Compliance (SUN – 12/12/21)

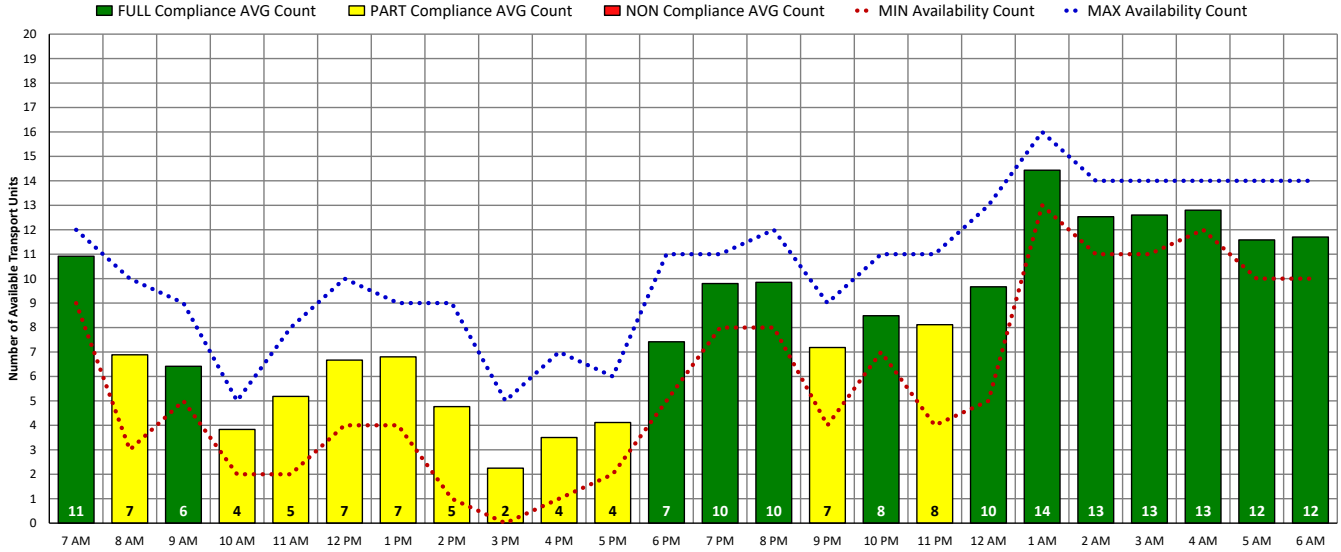


## ALL Transport Unit Availability Compliance (SUN – 12/12/21)

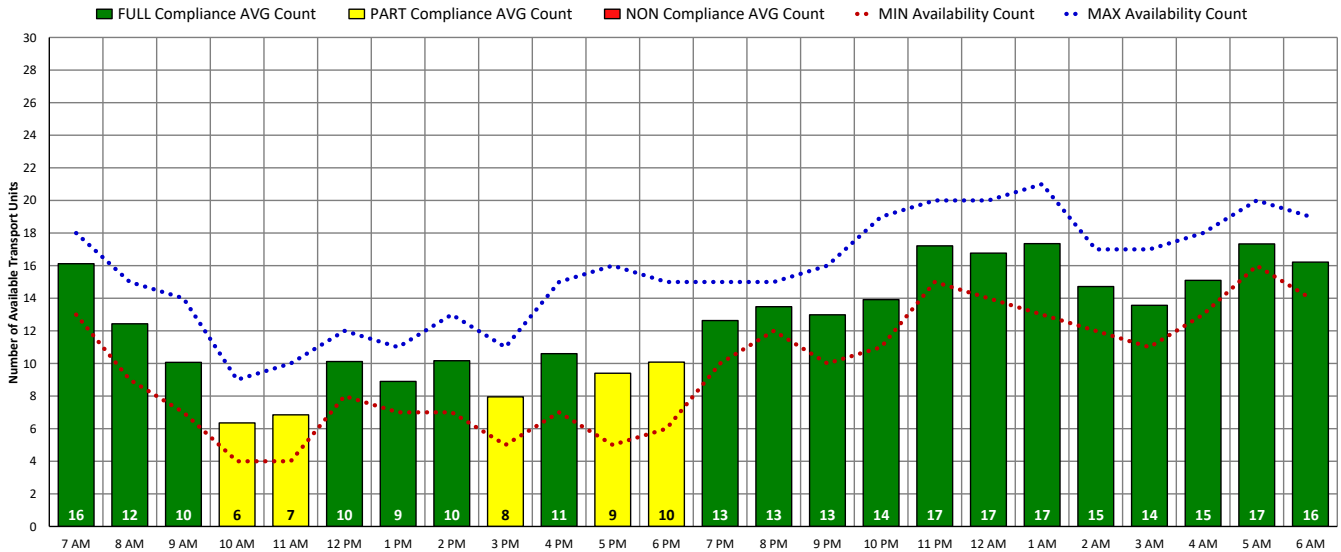


# DISTRICT OF COLUMBIA FIRE AND EMS DEPARTMENT

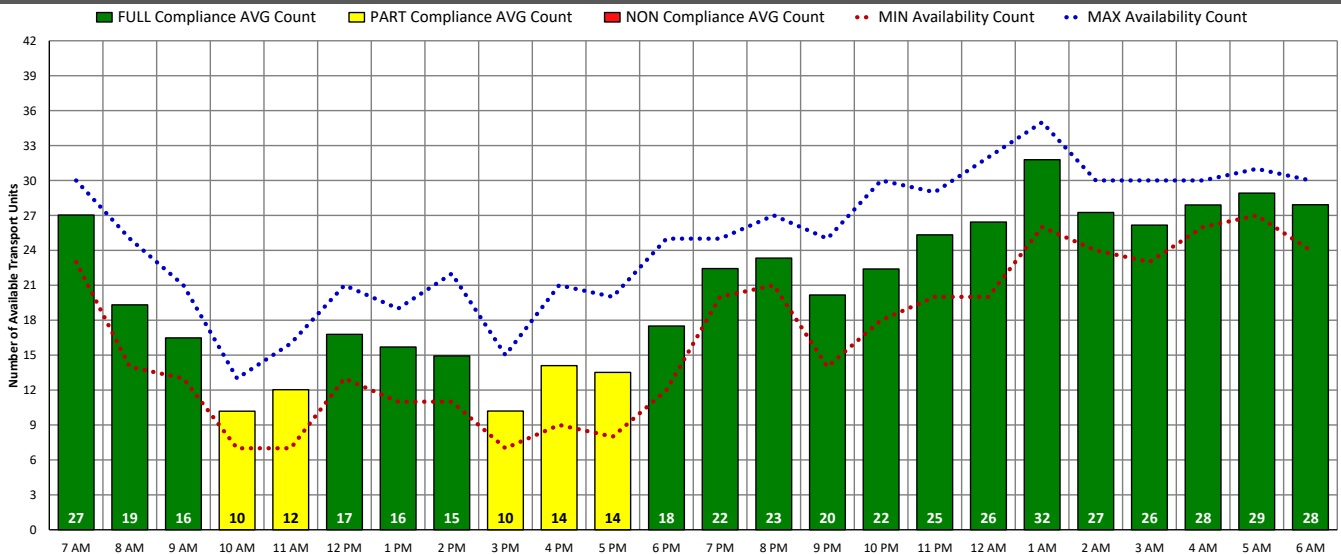
## ALS Transport Unit Availability Compliance (MON – 12/13/21)



## BLS Transport Unit Availability Compliance (MON – 12/13/21)

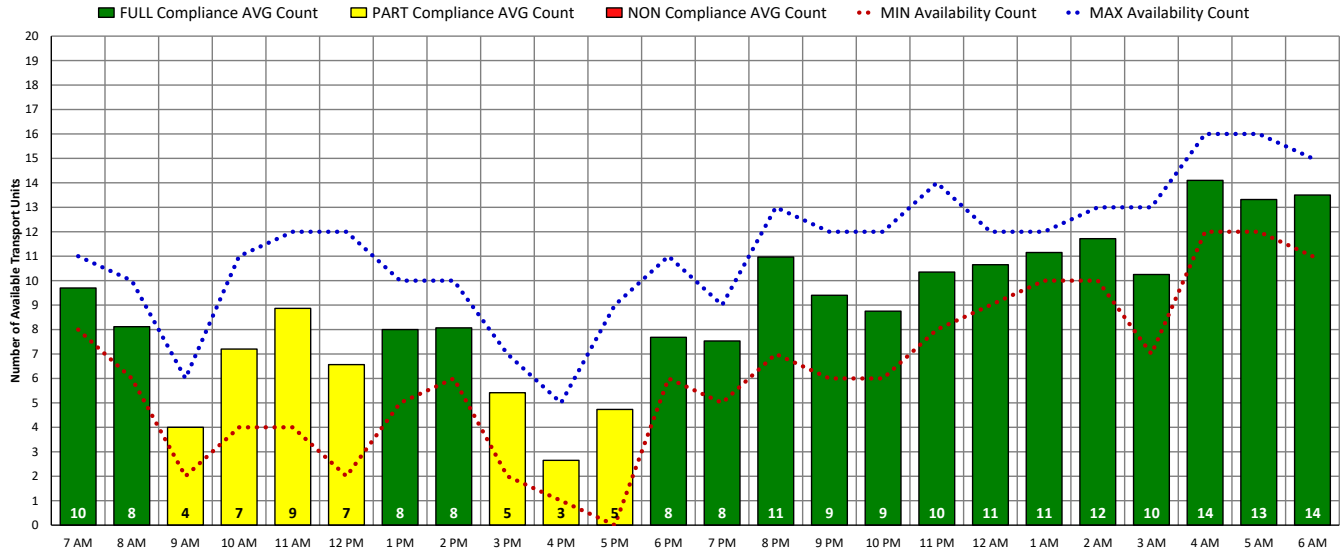


## ALL Transport Unit Availability Compliance (MON – 12/13/21)

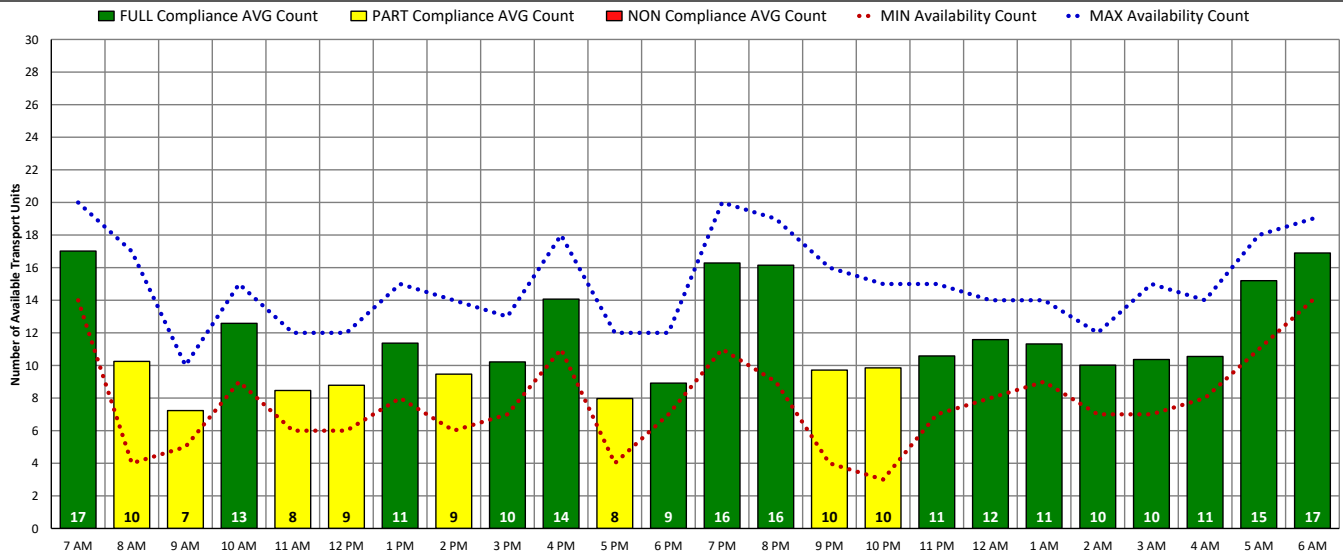


# DISTRICT OF COLUMBIA FIRE AND EMS DEPARTMENT

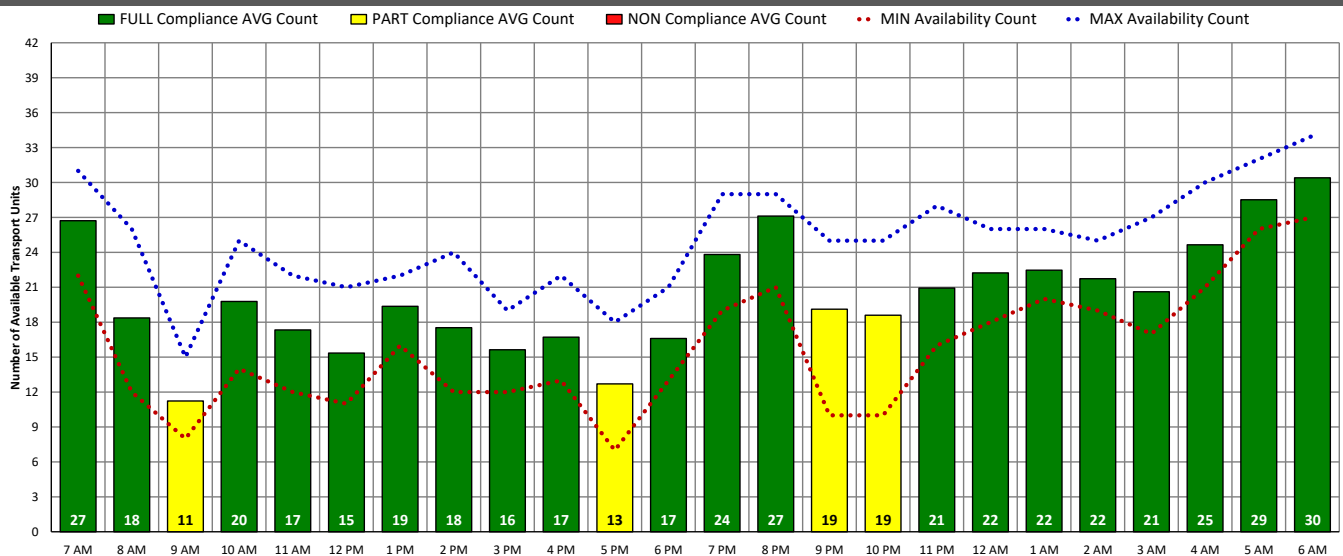
## ALS Transport Unit Availability Compliance (TUE – 12/14/21)



## BLS Transport Unit Availability Compliance (TUE – 12/14/21)



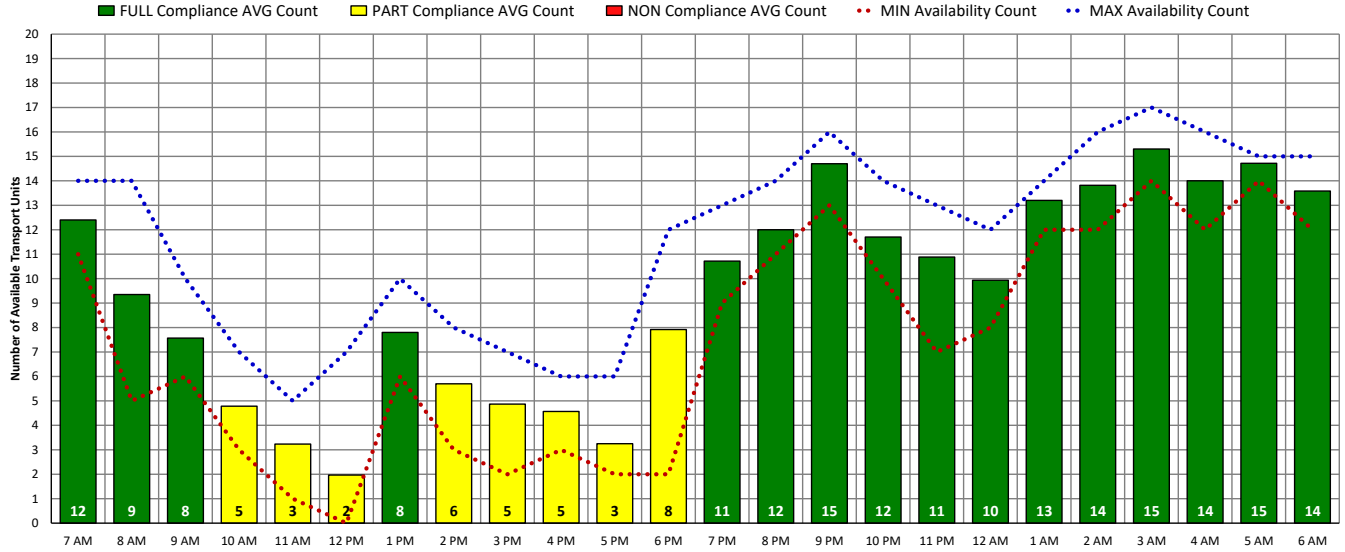
## ALL Transport Unit Availability Compliance (TUE – 12/14/21)



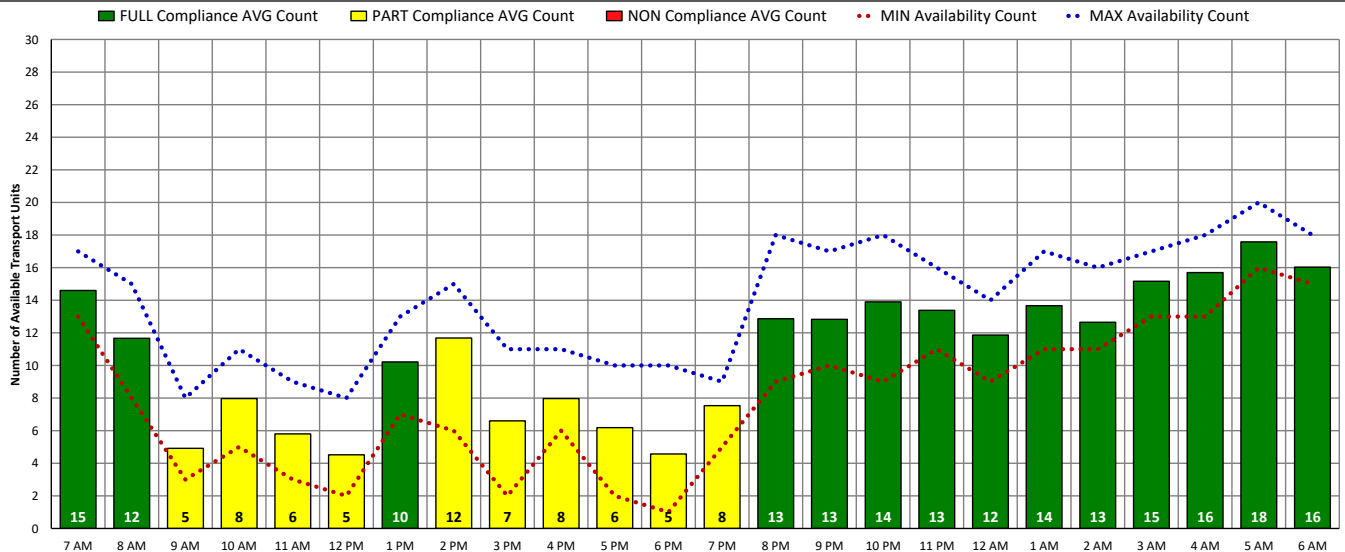


# DISTRICT OF COLUMBIA FIRE AND EMS DEPARTMENT

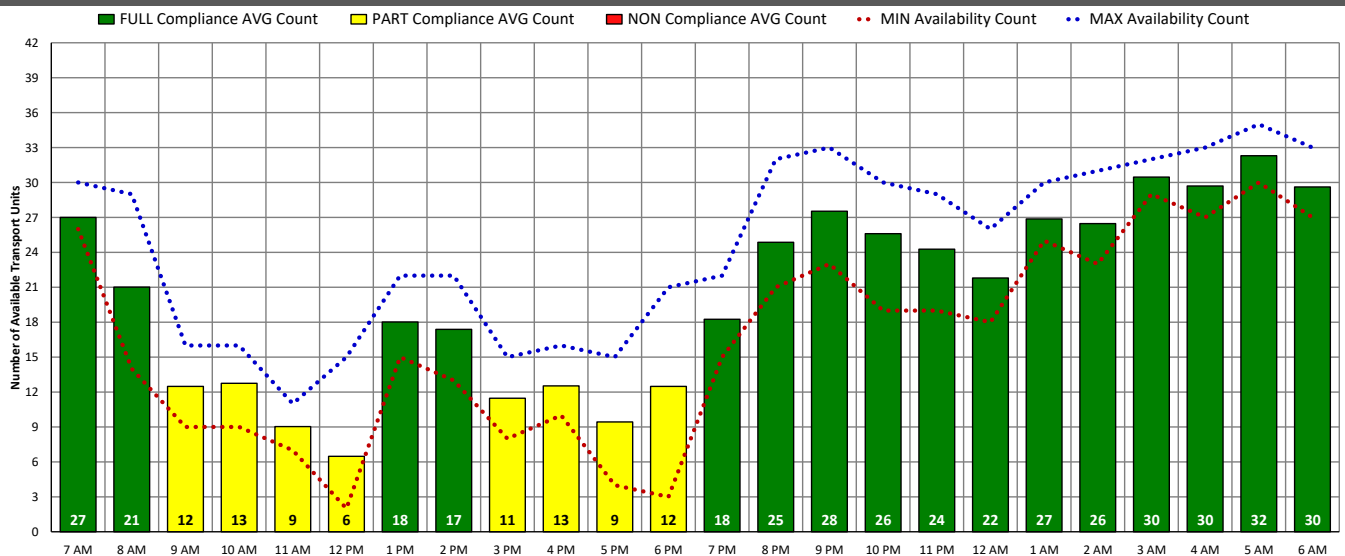
## ALS Transport Unit Availability Compliance (WED – 12/15/21)



## BLS Transport Unit Availability Compliance (WED – 12/15/21)

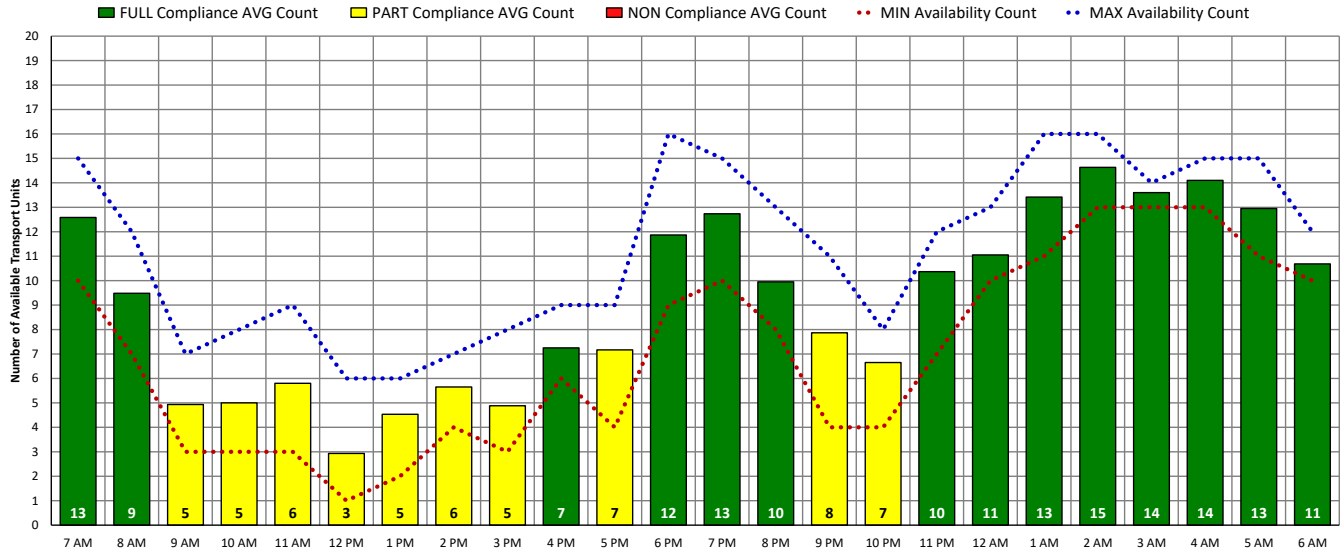


## ALL Transport Unit Availability Compliance (WED – 12/15/21)

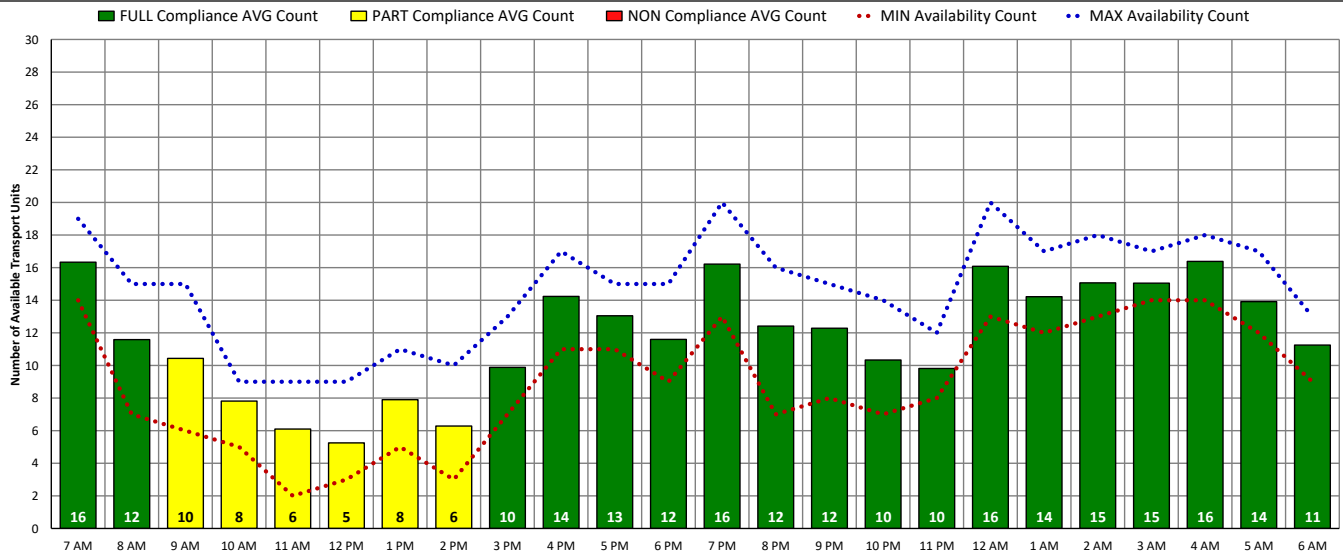


# DISTRICT OF COLUMBIA FIRE AND EMS DEPARTMENT

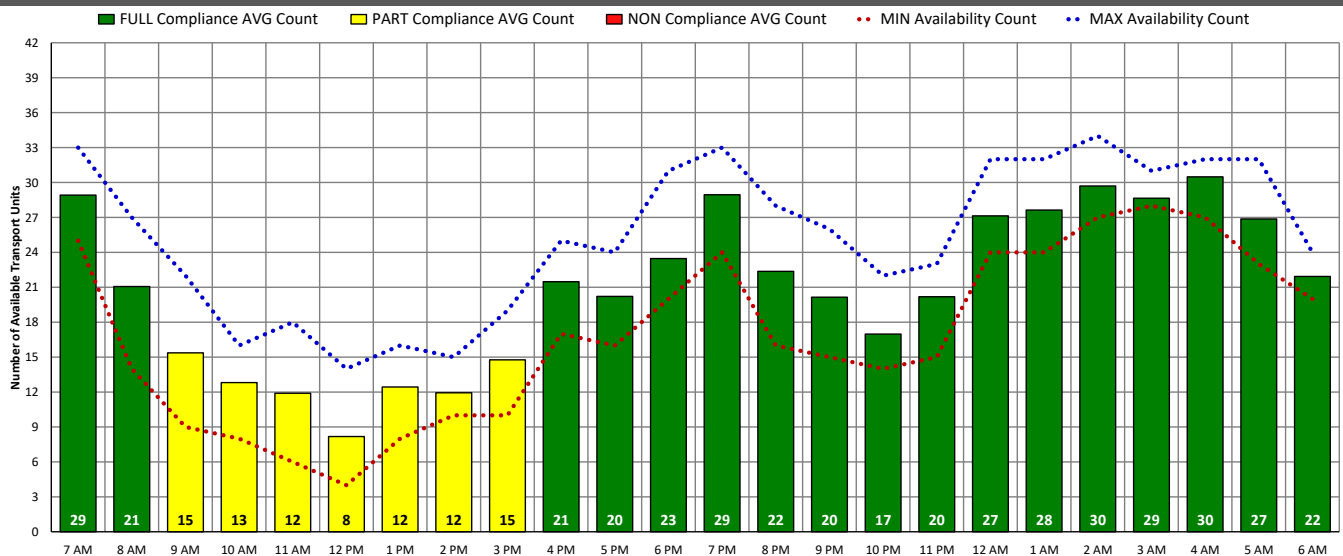
## ALS Transport Unit Availability Compliance (THU – 12/16/21)



## BLS Transport Unit Availability Compliance (THU – 12/16/21)

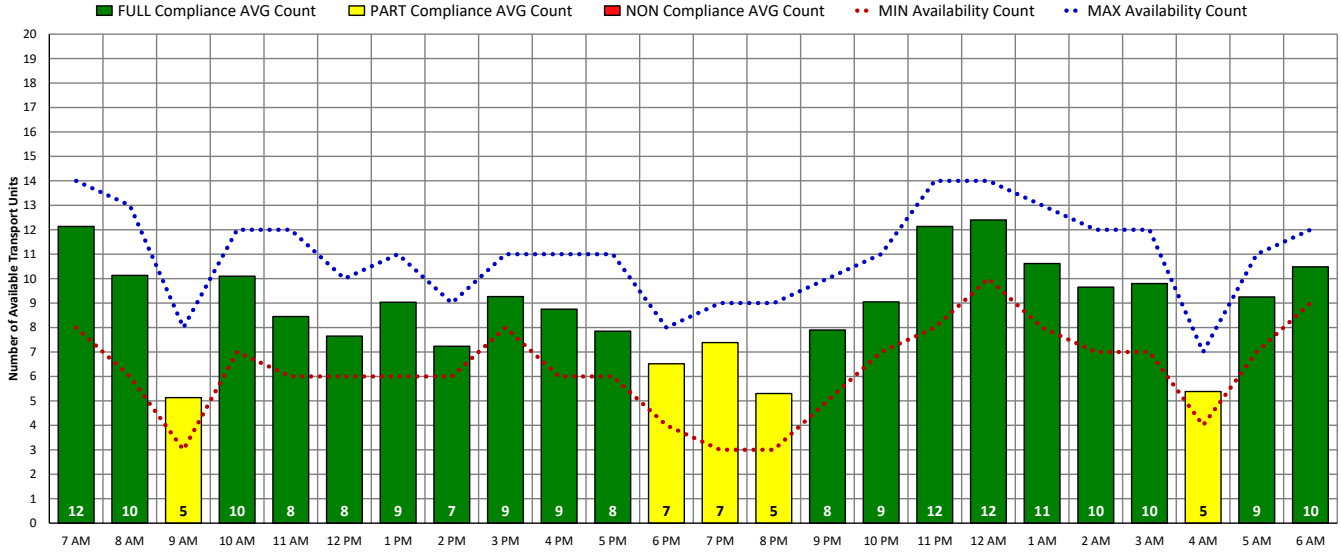


## ALL Transport Unit Availability Compliance (THU – 12/16/21)

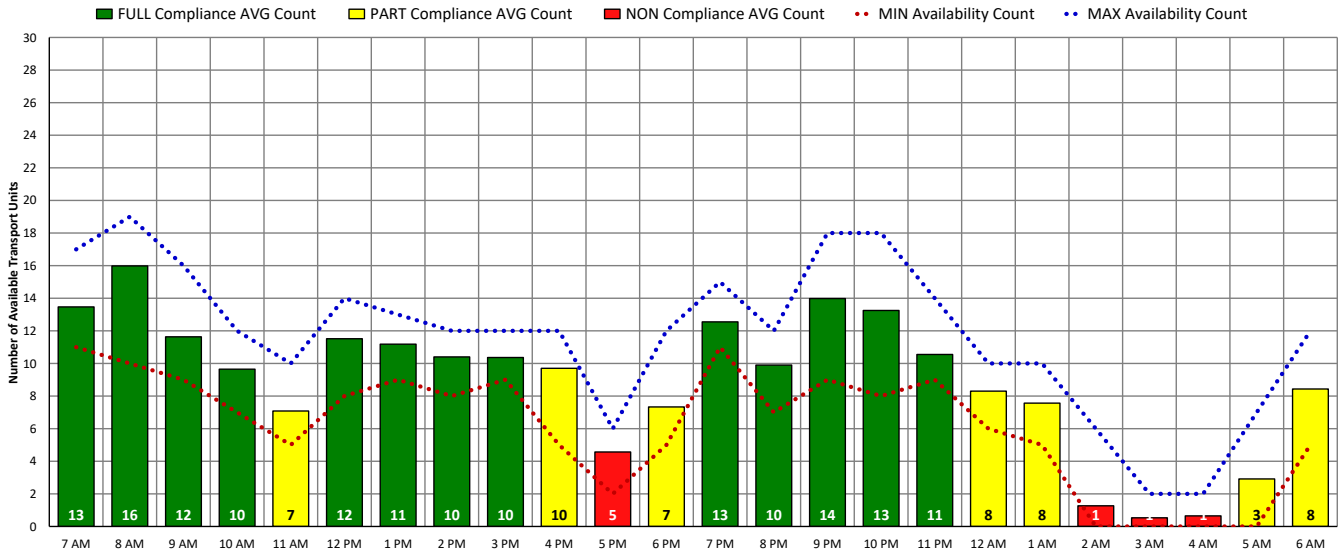


# DISTRICT OF COLUMBIA FIRE AND EMS DEPARTMENT

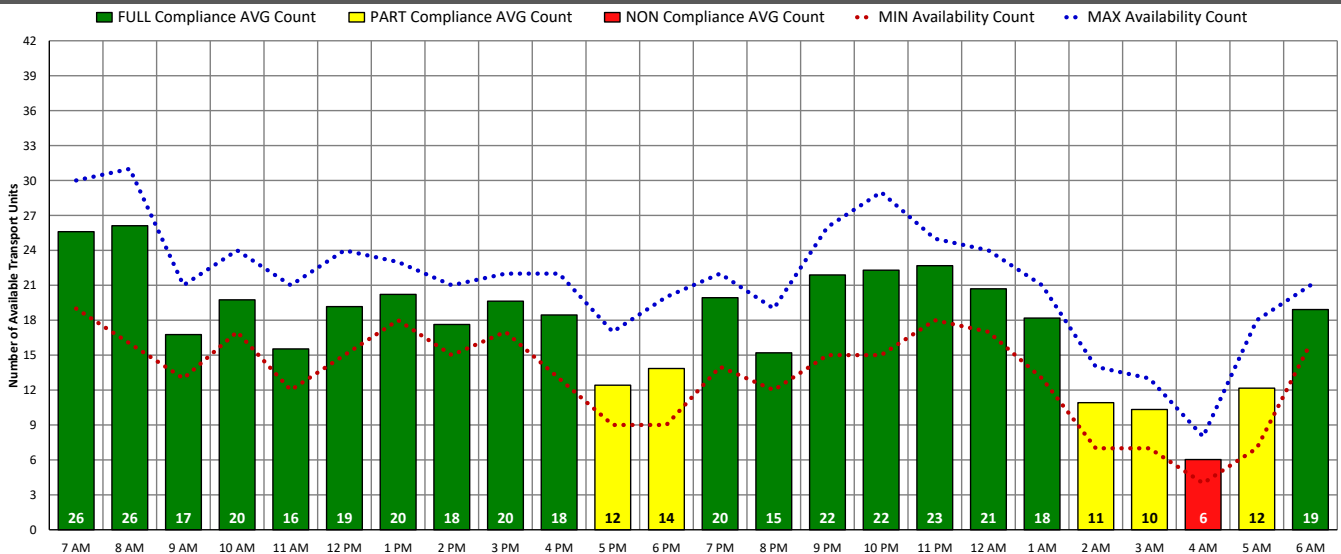
## ALS Transport Unit Availability Compliance (FRI – 12/17/21)



## BLS Transport Unit Availability Compliance (FRI – 12/17/21)

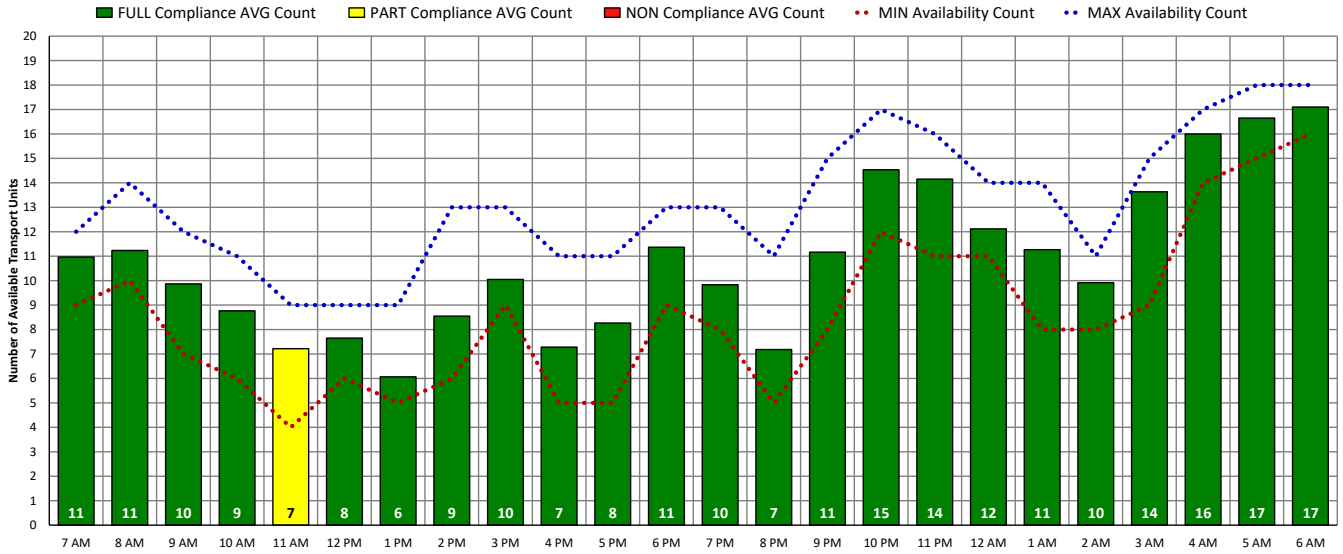


## ALL Transport Unit Availability Compliance (FRI – 12/17/21)

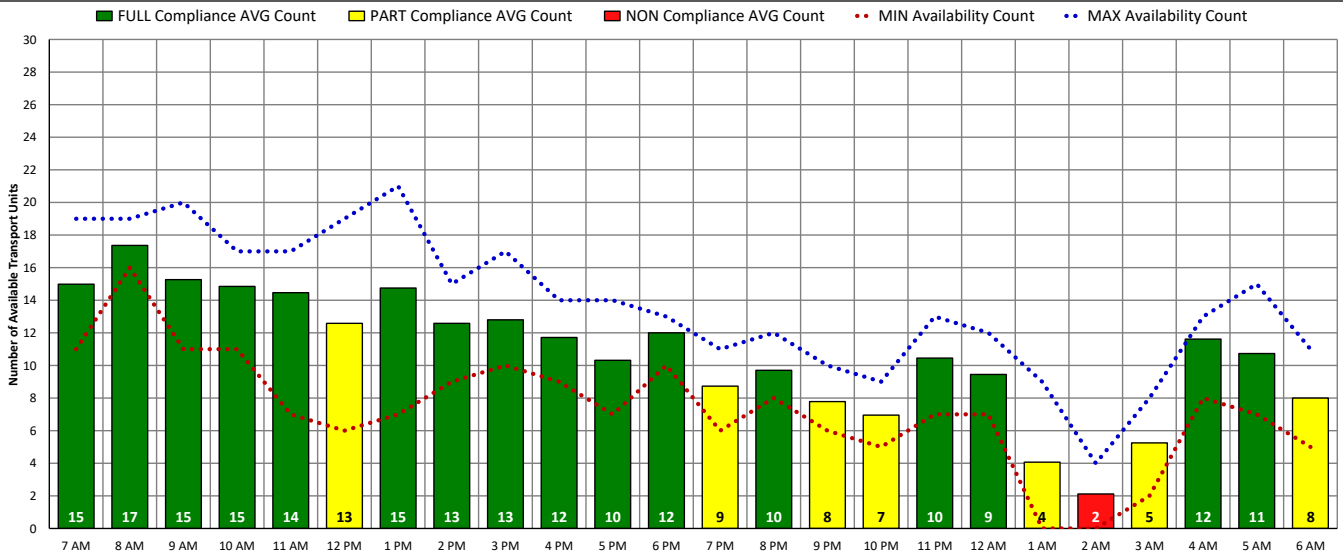


# DISTRICT OF COLUMBIA FIRE AND EMS DEPARTMENT

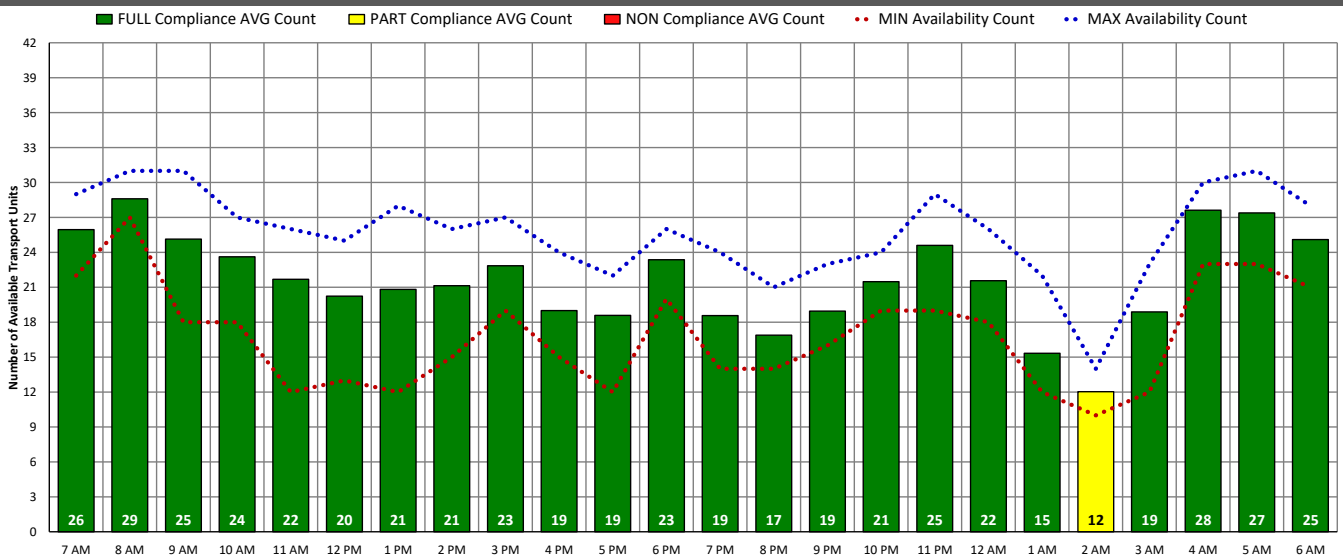
## ALS Transport Unit Availability Compliance (SAT – 12/18/21)



## BLS Transport Unit Availability Compliance (SAT – 12/18/21)

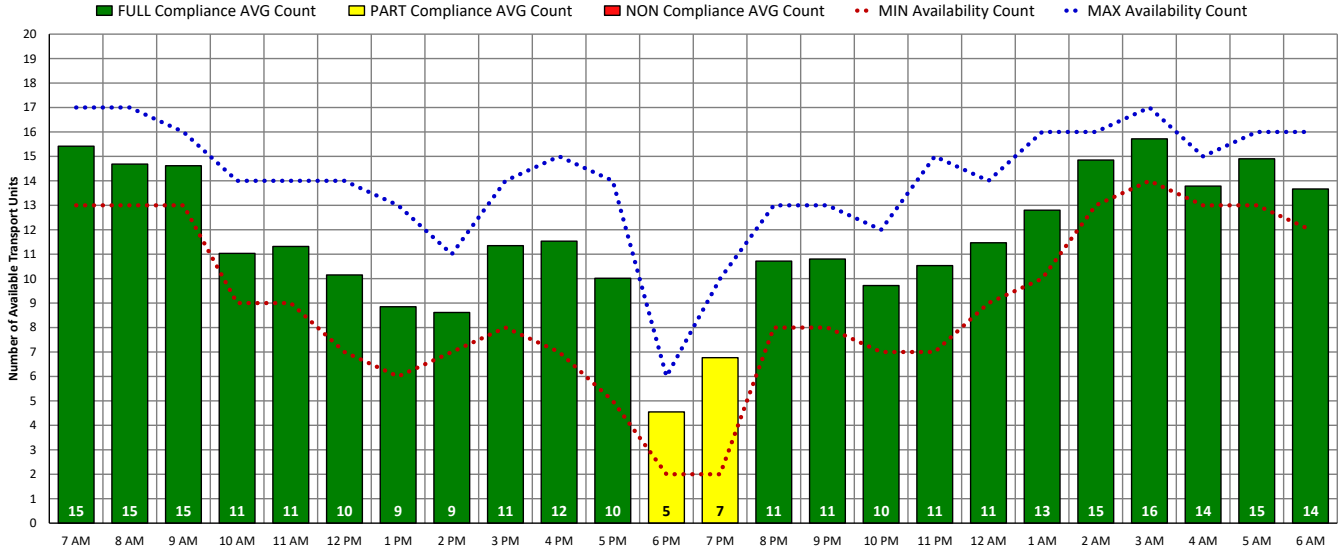


## ALL Transport Unit Availability Compliance (SAT – 12/18/21)

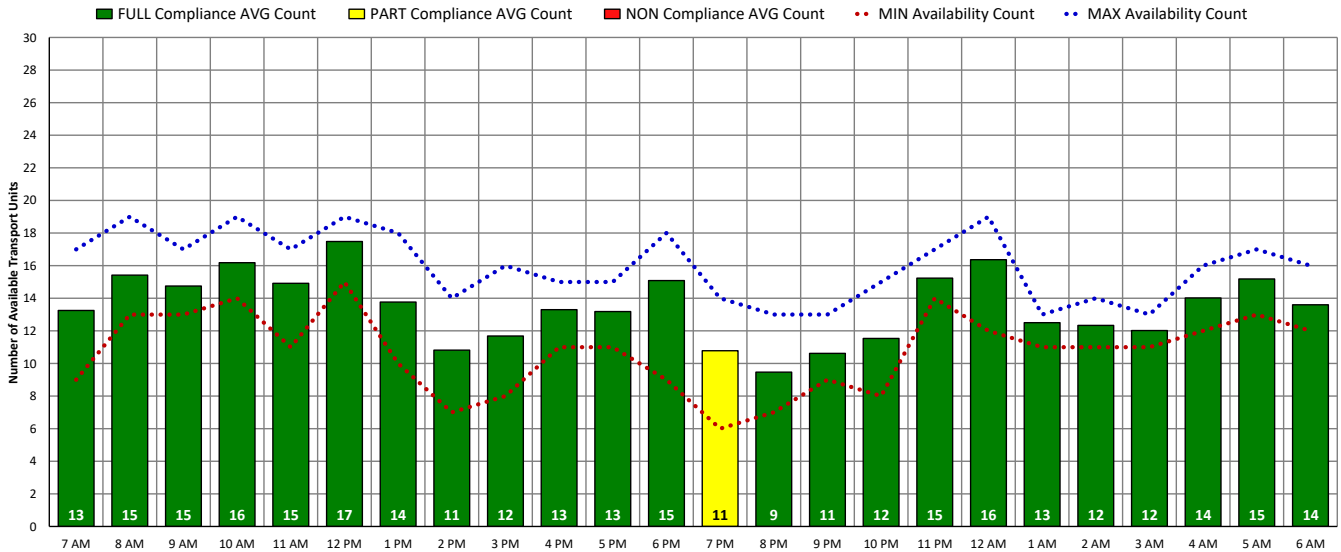


# DISTRICT OF COLUMBIA FIRE AND EMS DEPARTMENT

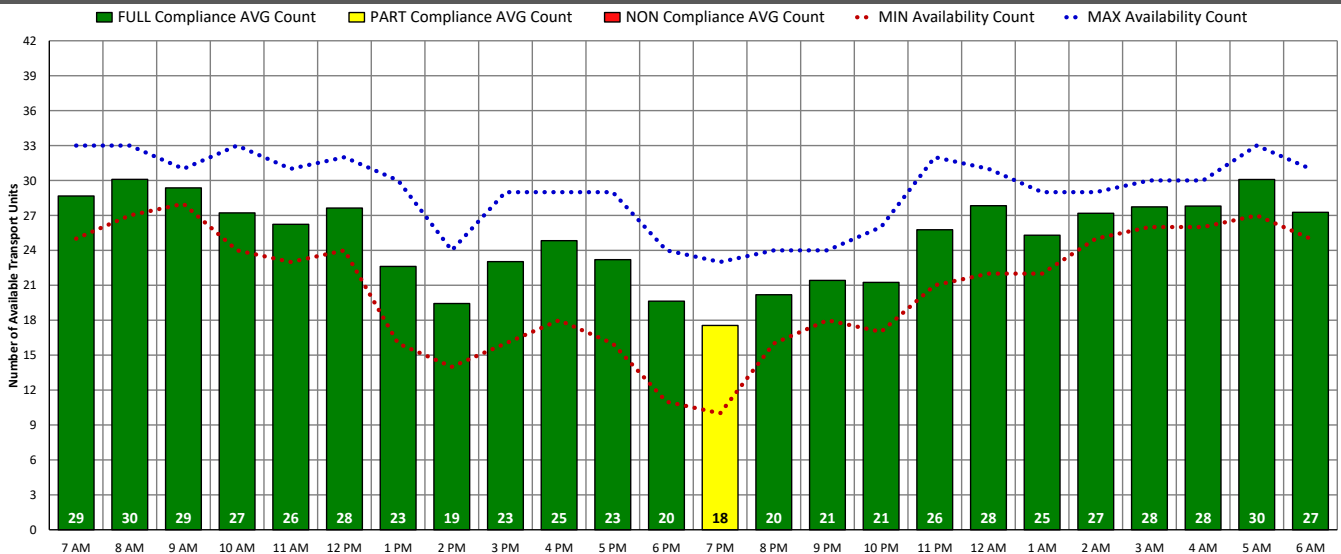
## ALS Transport Unit Availability Compliance (SUN – 12/19/21)



## BLS Transport Unit Availability Compliance (SUN – 12/19/21)

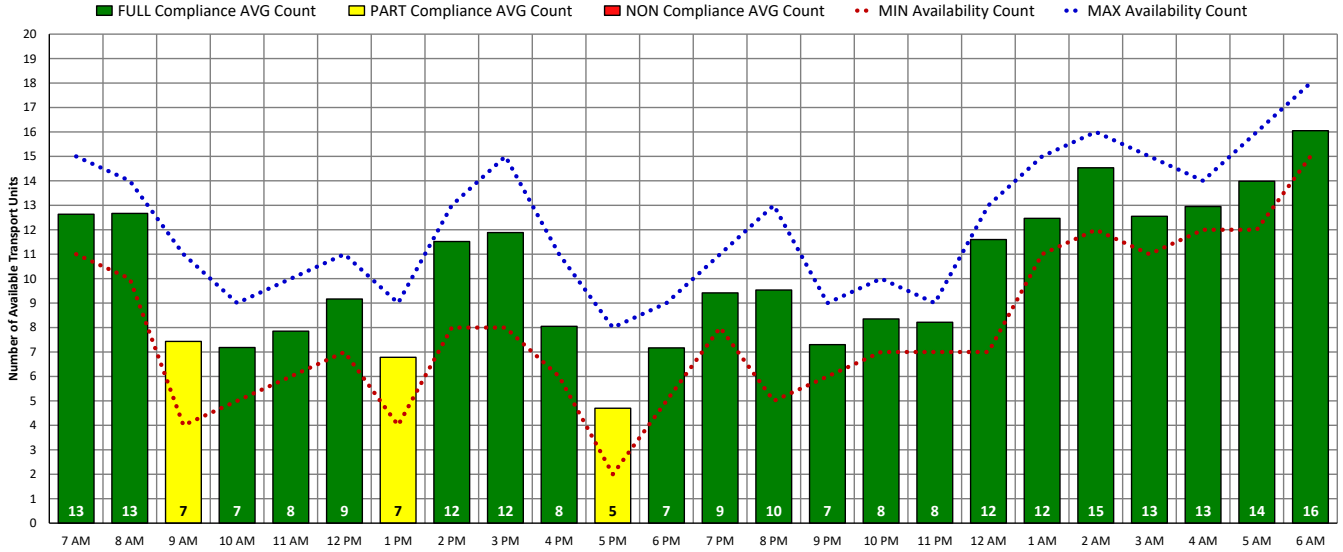


## ALL Transport Unit Availability Compliance (SUN – 12/19/21)

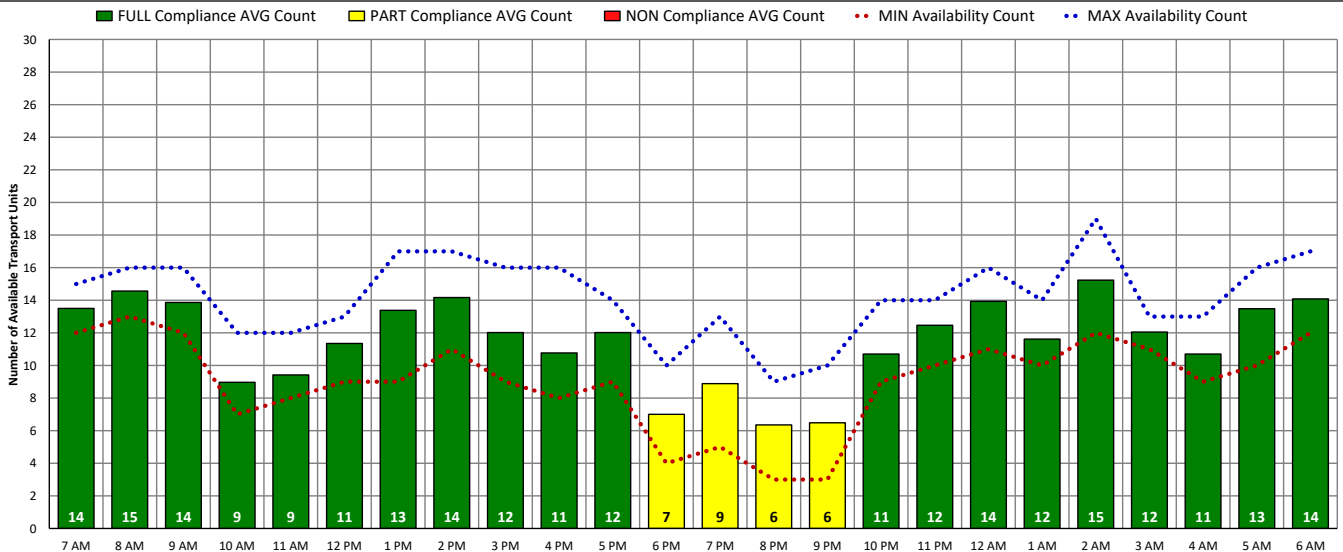


# DISTRICT OF COLUMBIA FIRE AND EMS DEPARTMENT

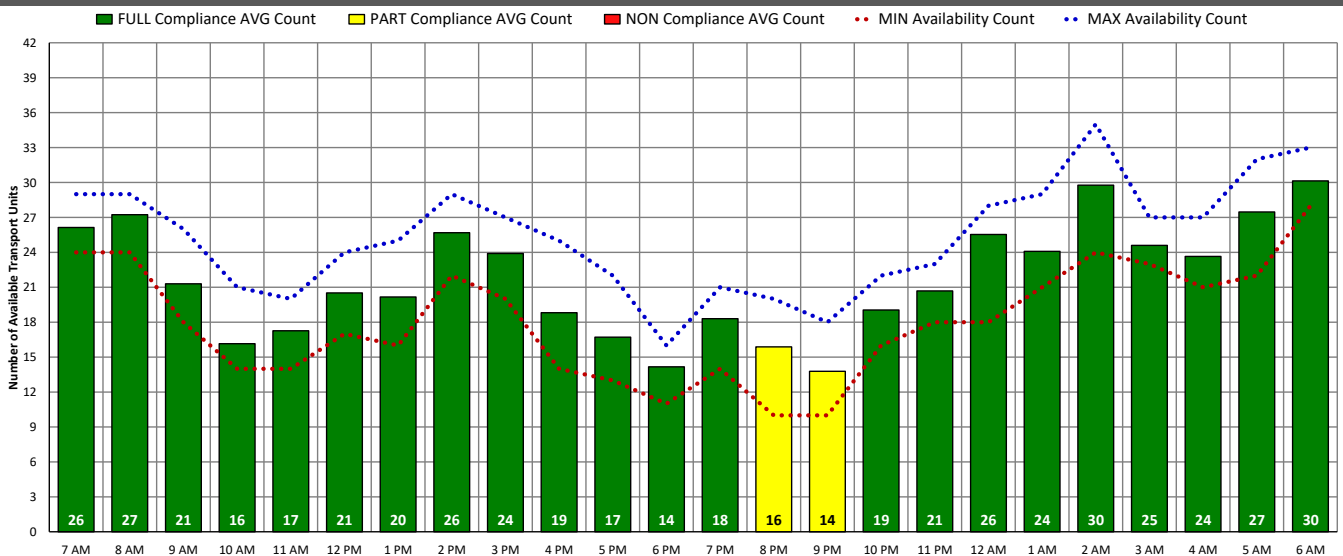
## ALS Transport Unit Availability Compliance (MON – 12/20/21)



## BLS Transport Unit Availability Compliance (MON – 12/20/21)

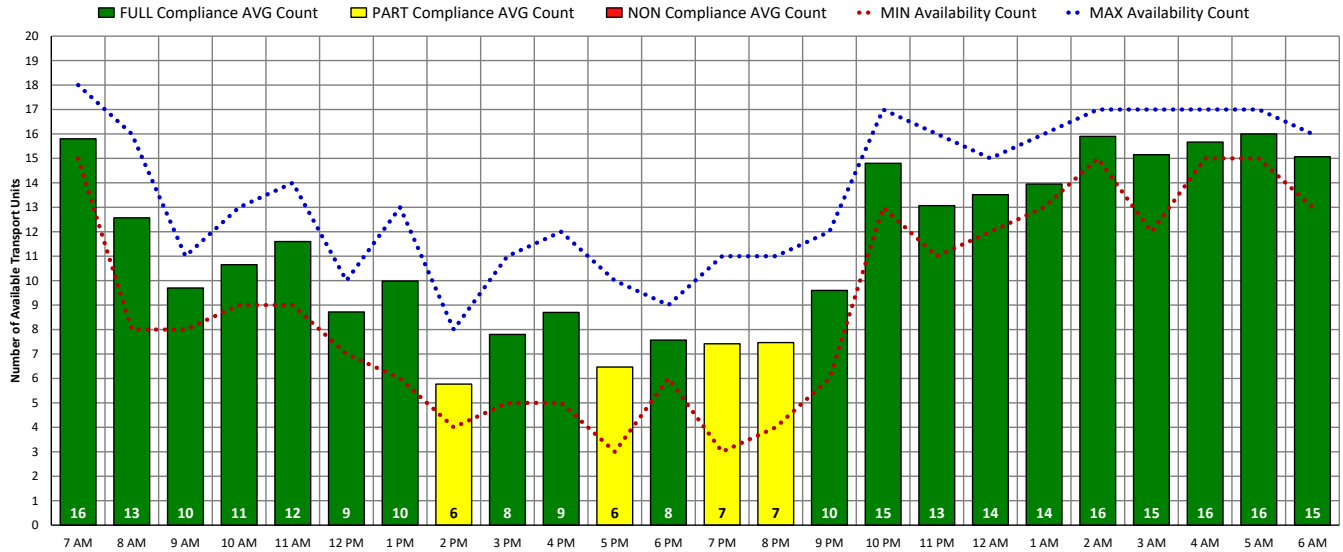


## ALL Transport Unit Availability Compliance (MON – 12/20/21)

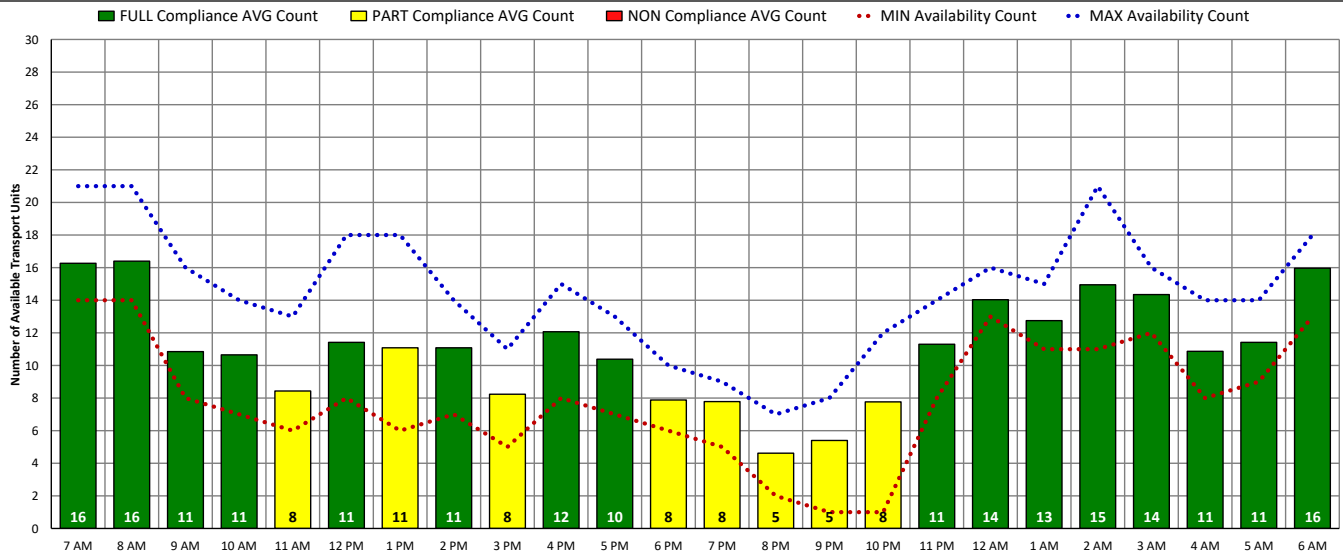


# DISTRICT OF COLUMBIA FIRE AND EMS DEPARTMENT

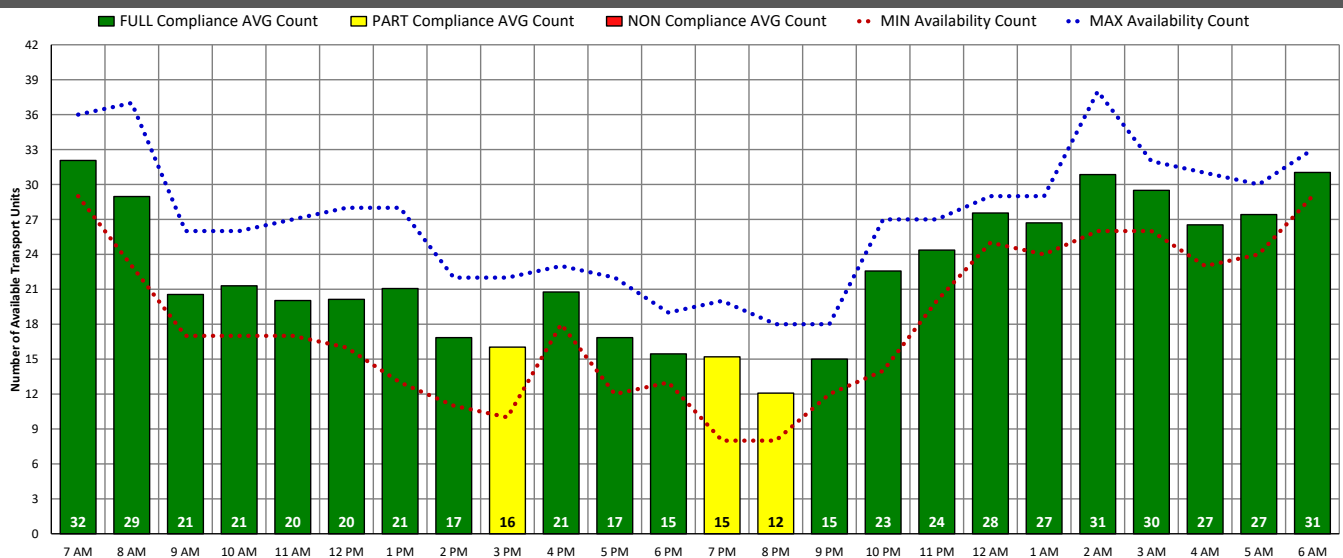
## ALS Transport Unit Availability Compliance (TUE – 12/21/21)



## BLS Transport Unit Availability Compliance (TUE – 12/21/21)

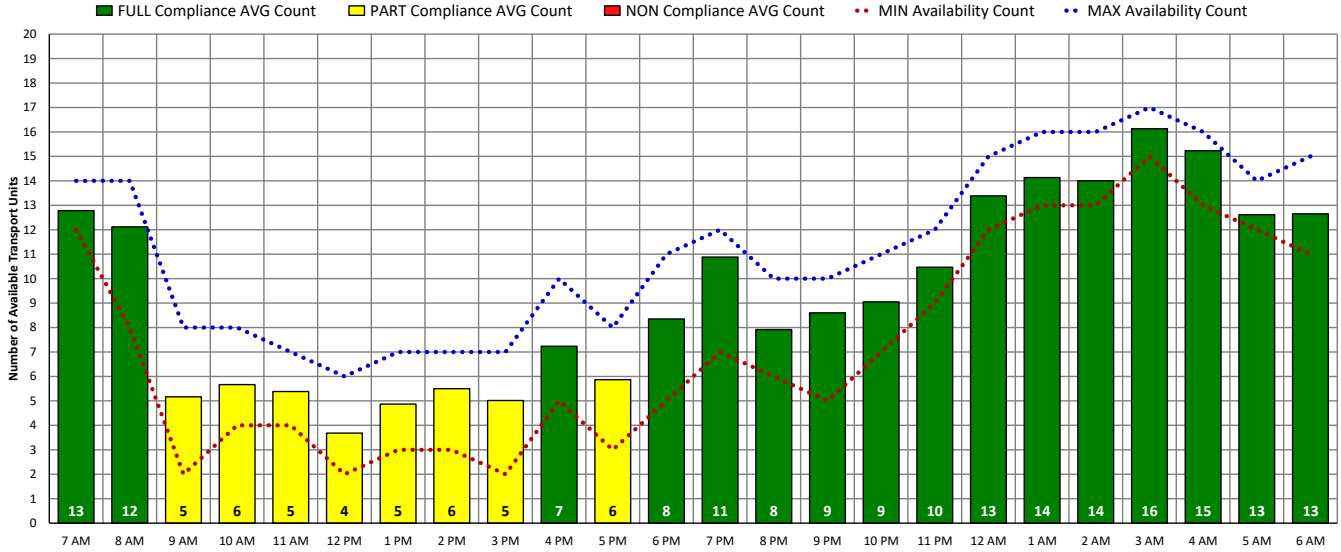


## ALL Transport Unit Availability Compliance (TUE – 12/21/21)

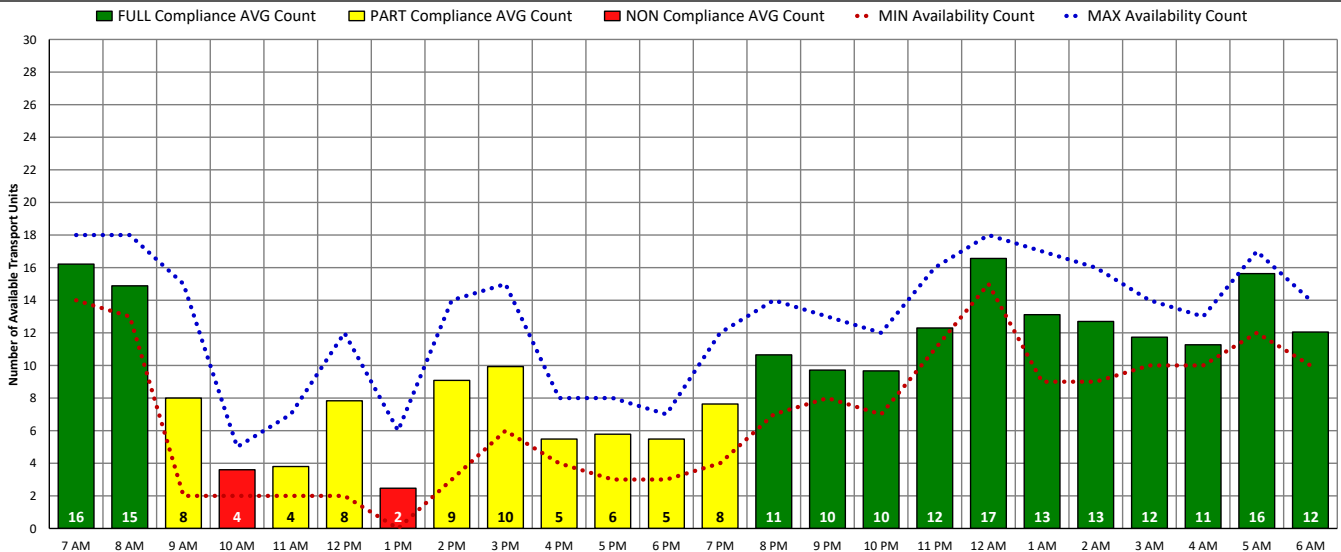


# DISTRICT OF COLUMBIA FIRE AND EMS DEPARTMENT

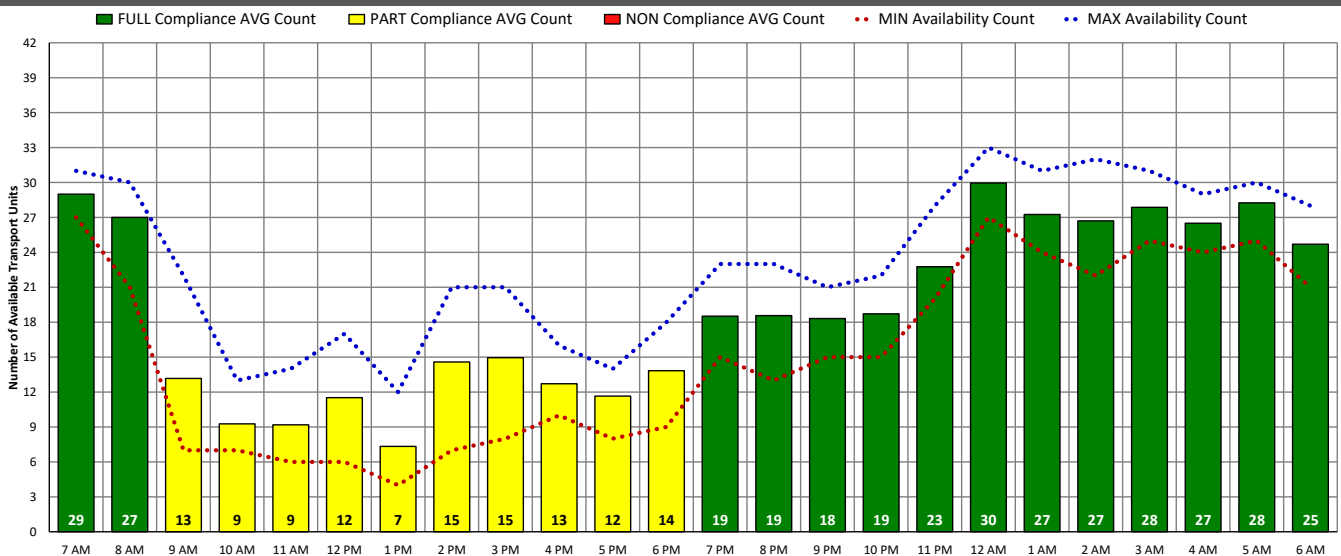
## ALS Transport Unit Availability Compliance (WED – 12/22/21)



## BLS Transport Unit Availability Compliance (WED – 12/22/21)



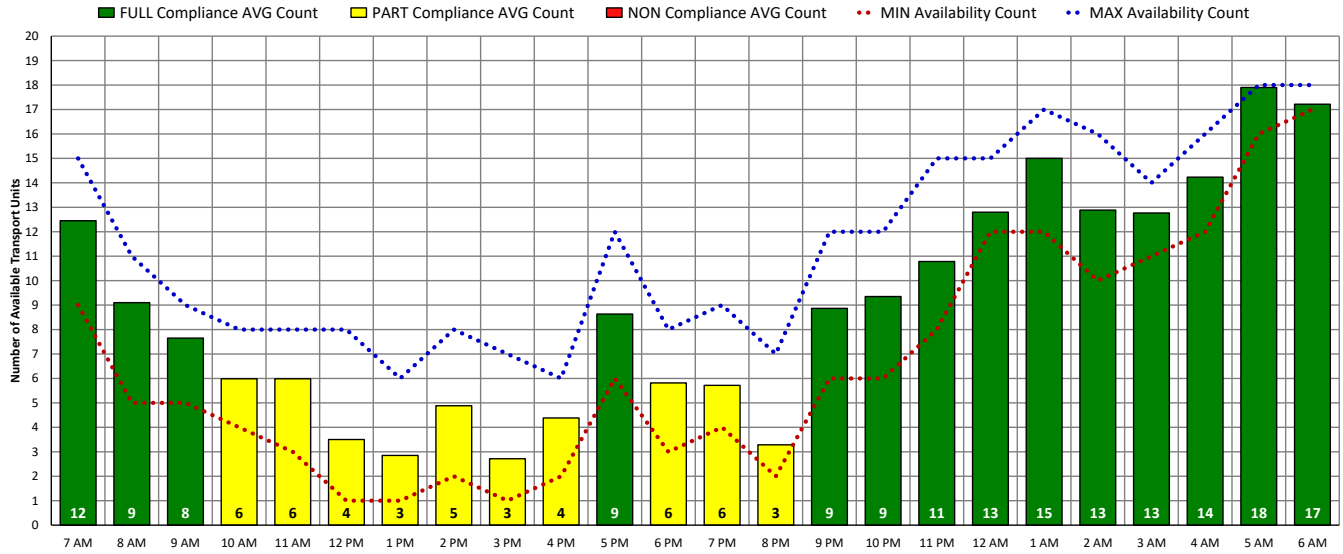
## ALL Transport Unit Availability Compliance (WED – 12/22/21)



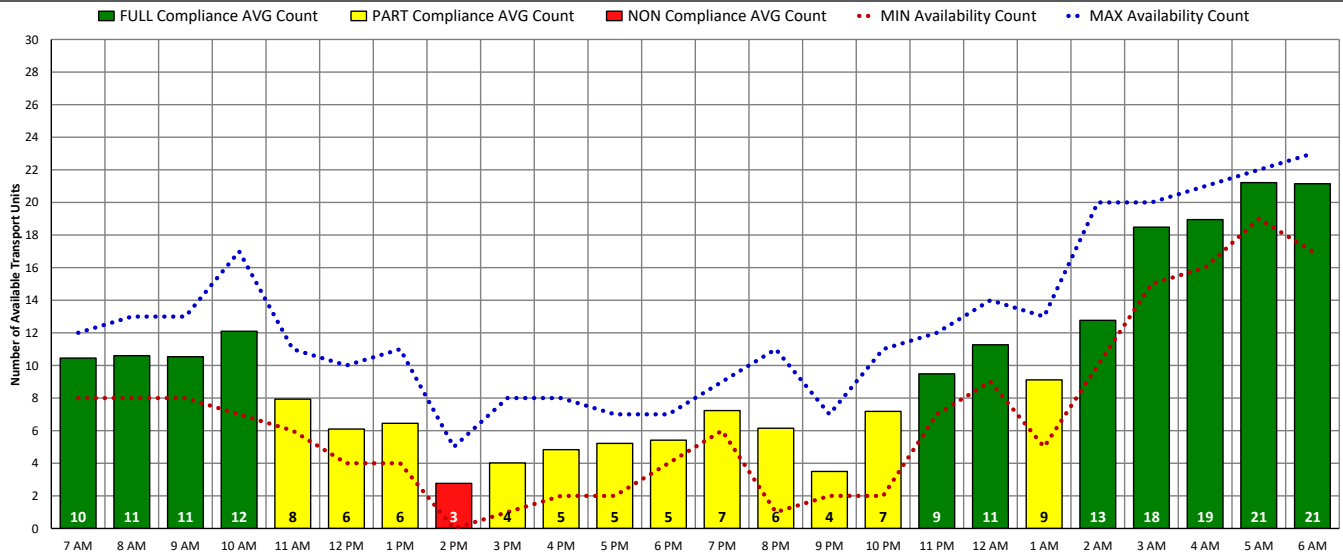


# DISTRICT OF COLUMBIA FIRE AND EMS DEPARTMENT

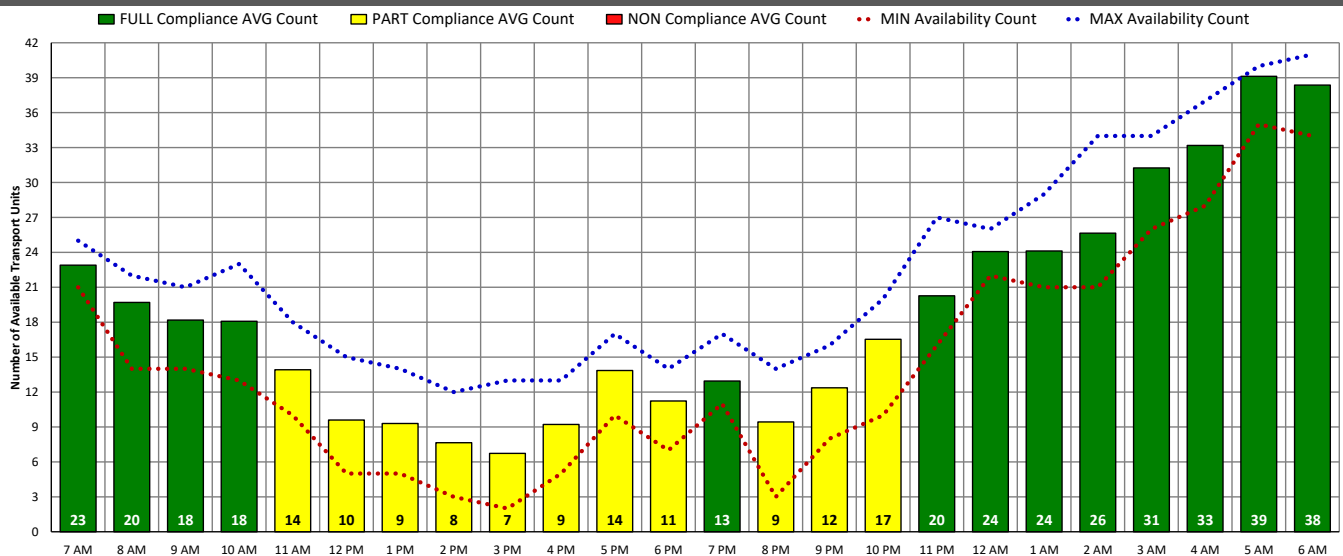
## ALS Transport Unit Availability Compliance (THU – 12/23/21)



## BLS Transport Unit Availability Compliance (THU – 12/23/21)

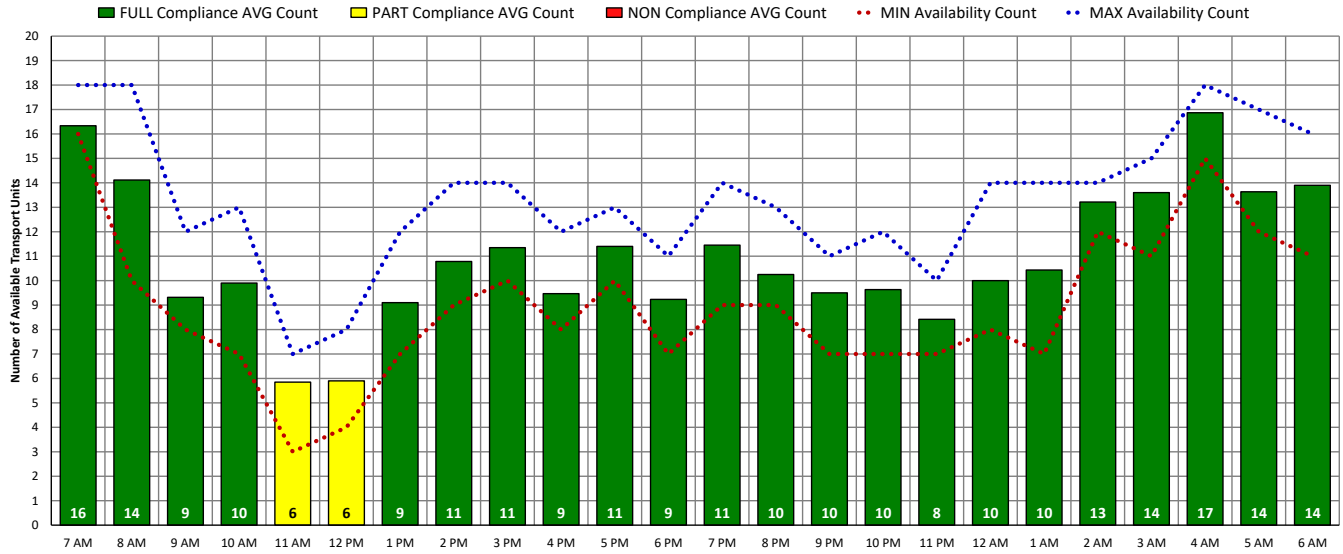


## ALL Transport Unit Availability Compliance (THU – 12/23/21)

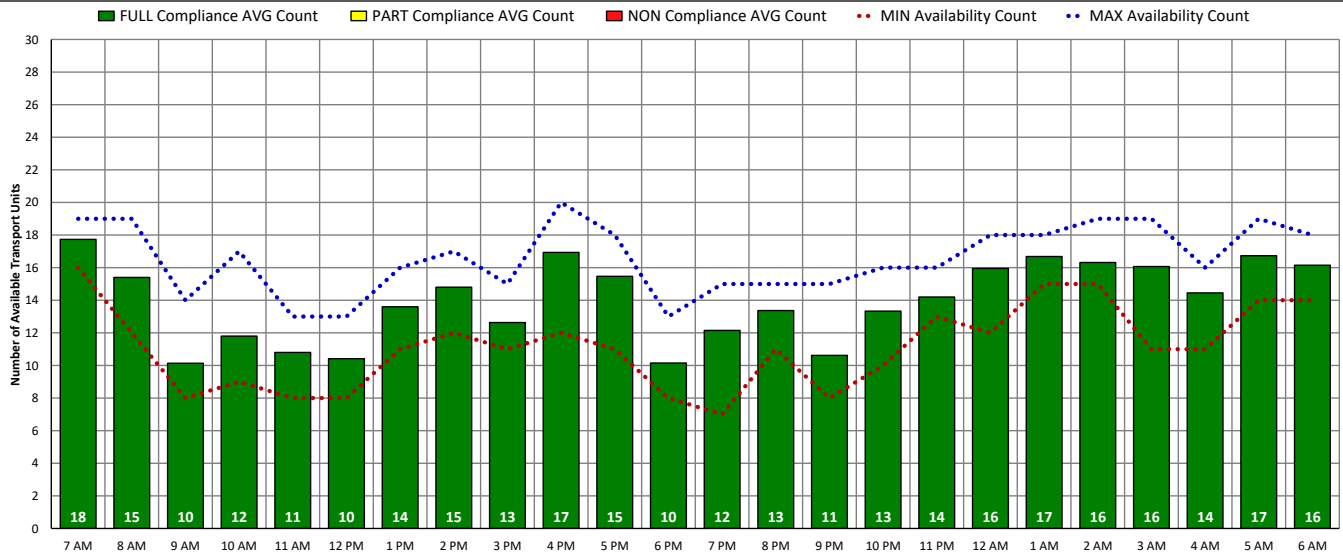


# DISTRICT OF COLUMBIA FIRE AND EMS DEPARTMENT

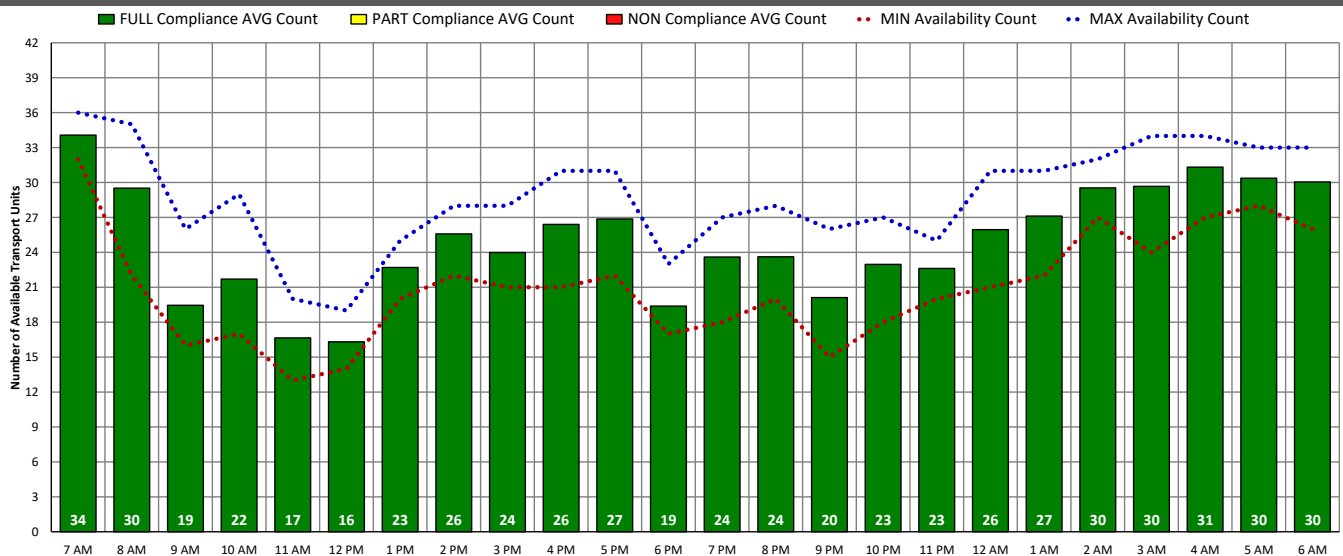
## ALS Transport Unit Availability Compliance (FRI – 12/24/21)



## BLS Transport Unit Availability Compliance (FRI – 12/24/21)

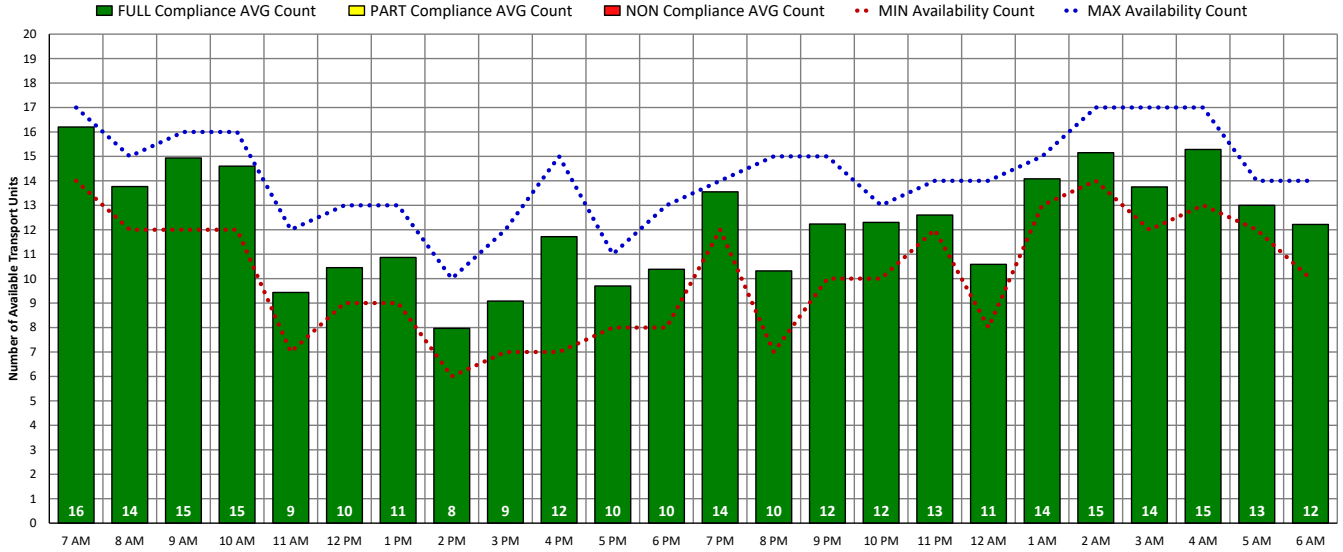


## ALL Transport Unit Availability Compliance (FRI – 12/24/21)

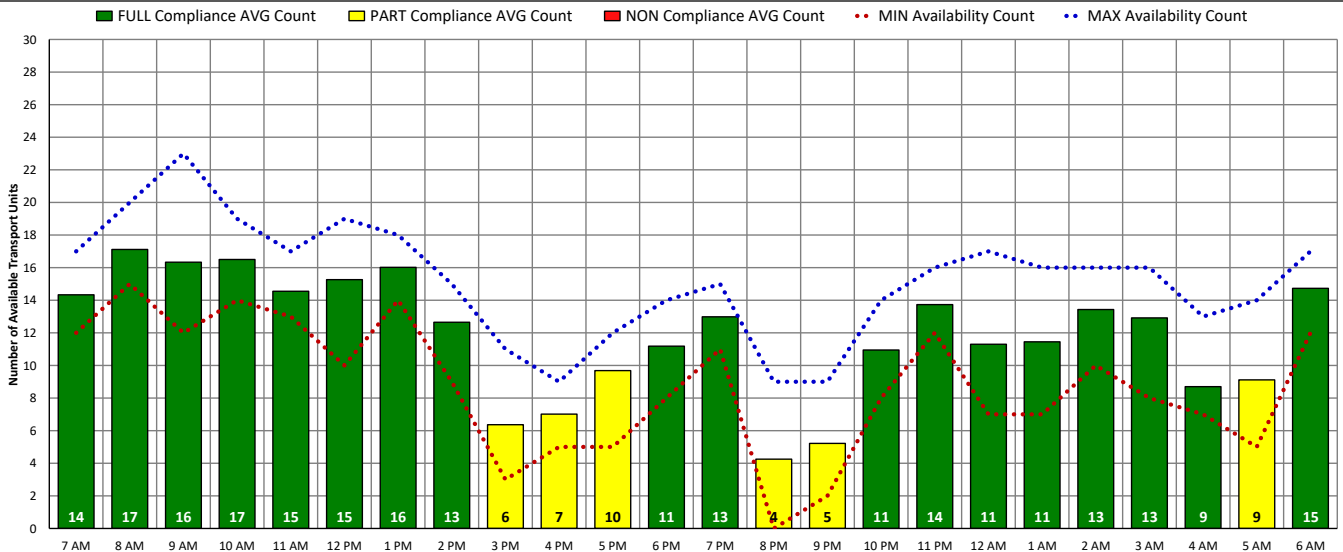


# DISTRICT OF COLUMBIA FIRE AND EMS DEPARTMENT

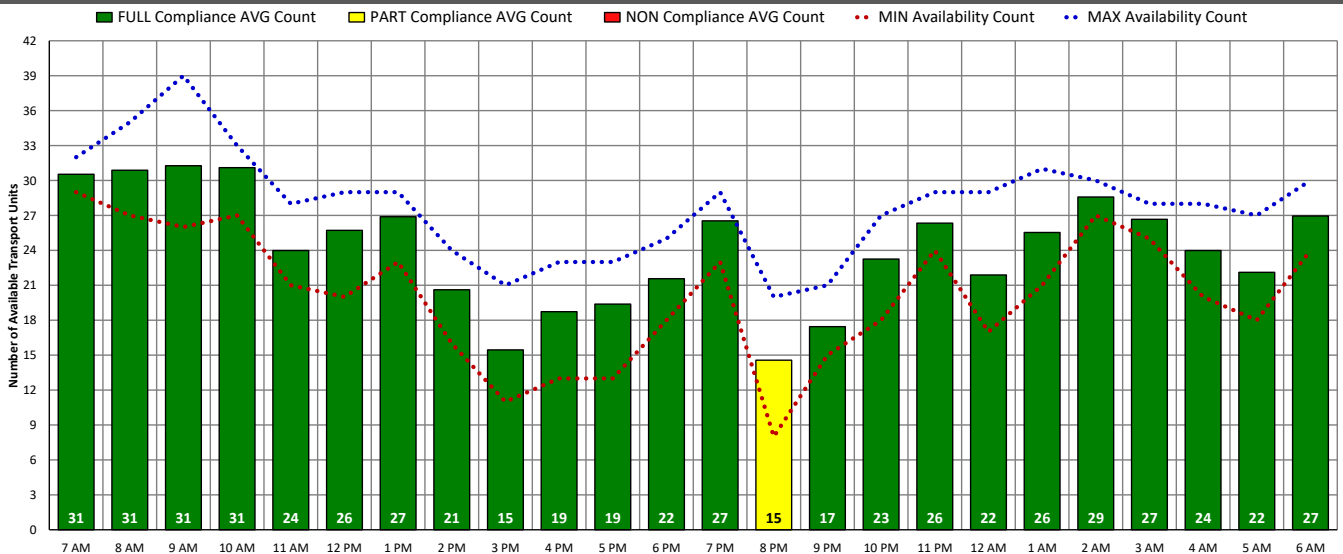
## ALS Transport Unit Availability Compliance (SAT – 12/25/21)



## BLS Transport Unit Availability Compliance (SAT – 12/25/21)

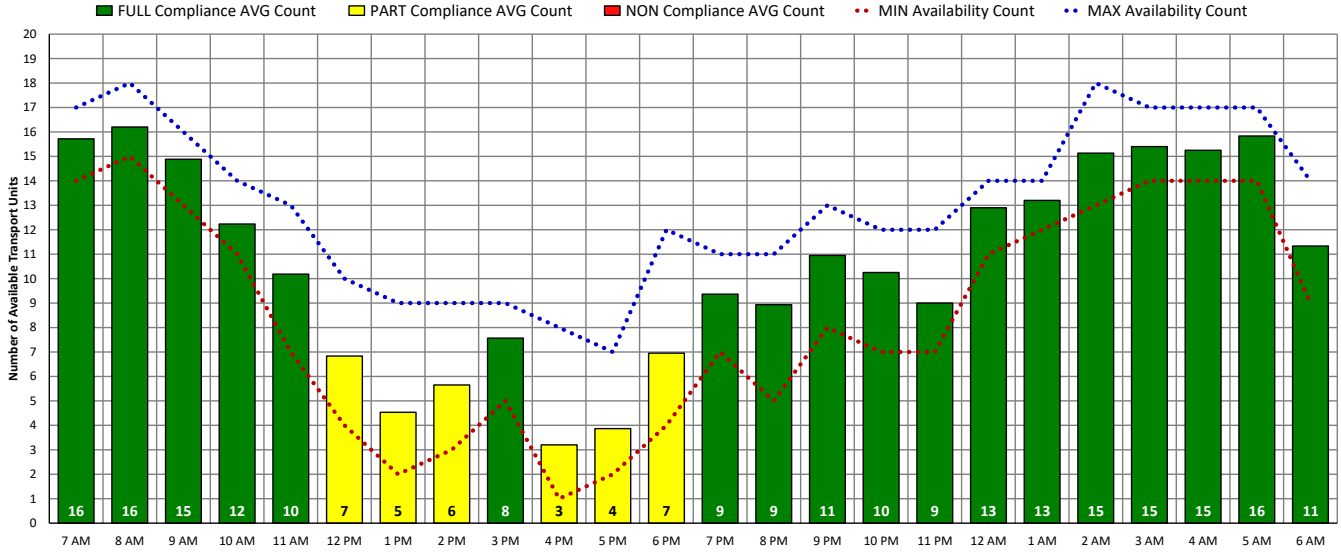


## ALL Transport Unit Availability Compliance (SAT – 12/25/21)

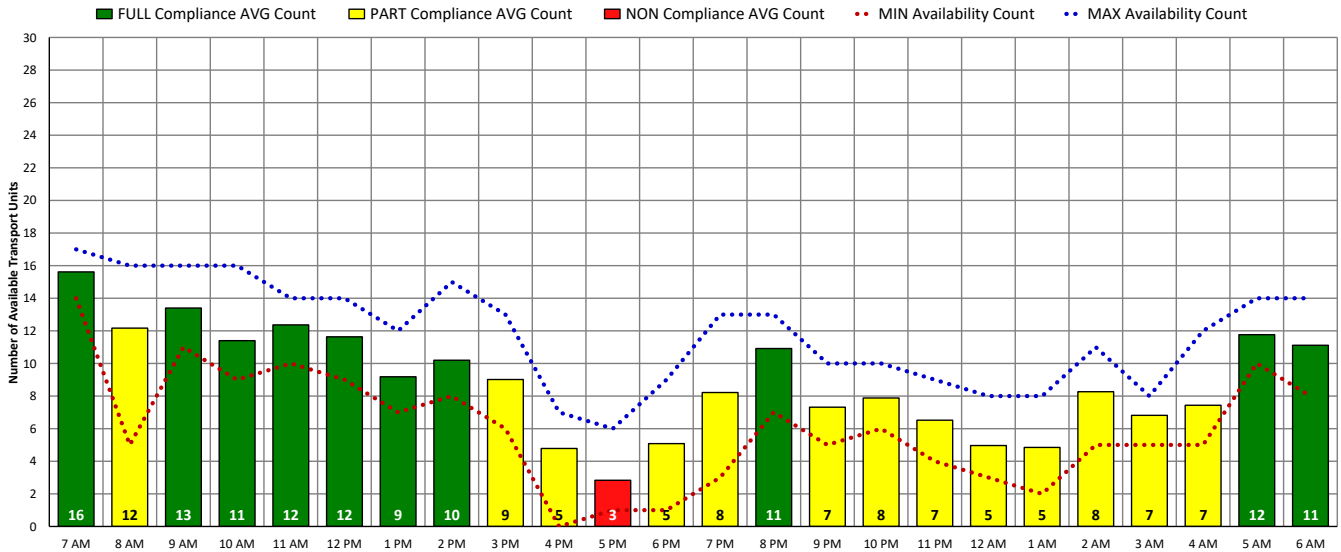


# DISTRICT OF COLUMBIA FIRE AND EMS DEPARTMENT

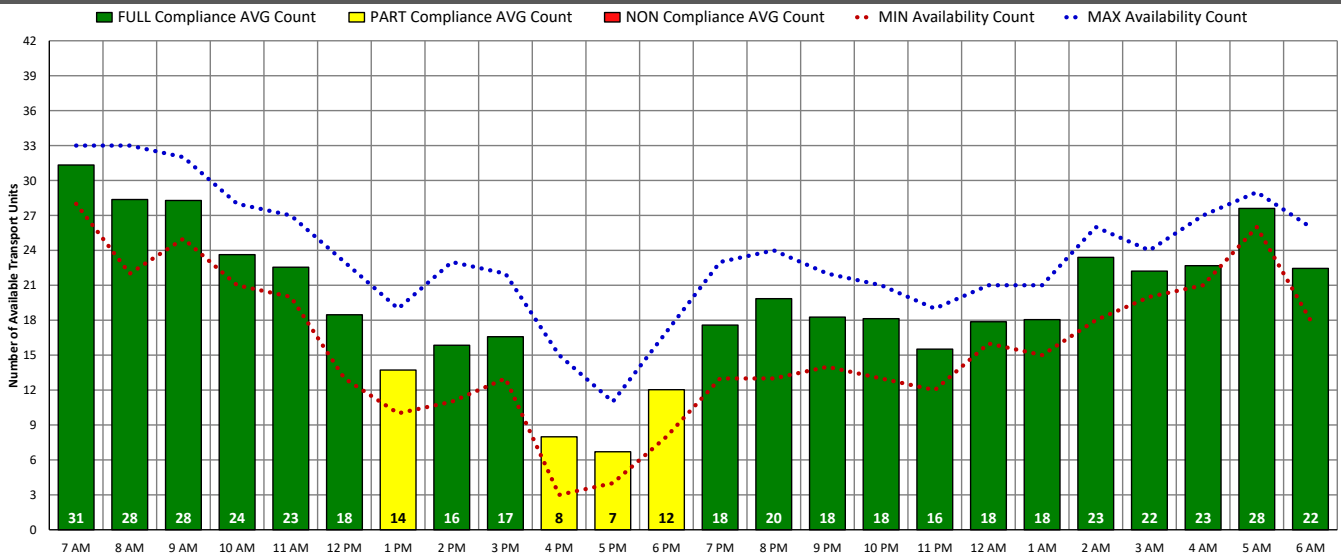
## ALS Transport Unit Availability Compliance (SUN – 12/26/21)



## BLS Transport Unit Availability Compliance (SUN – 12/26/21)

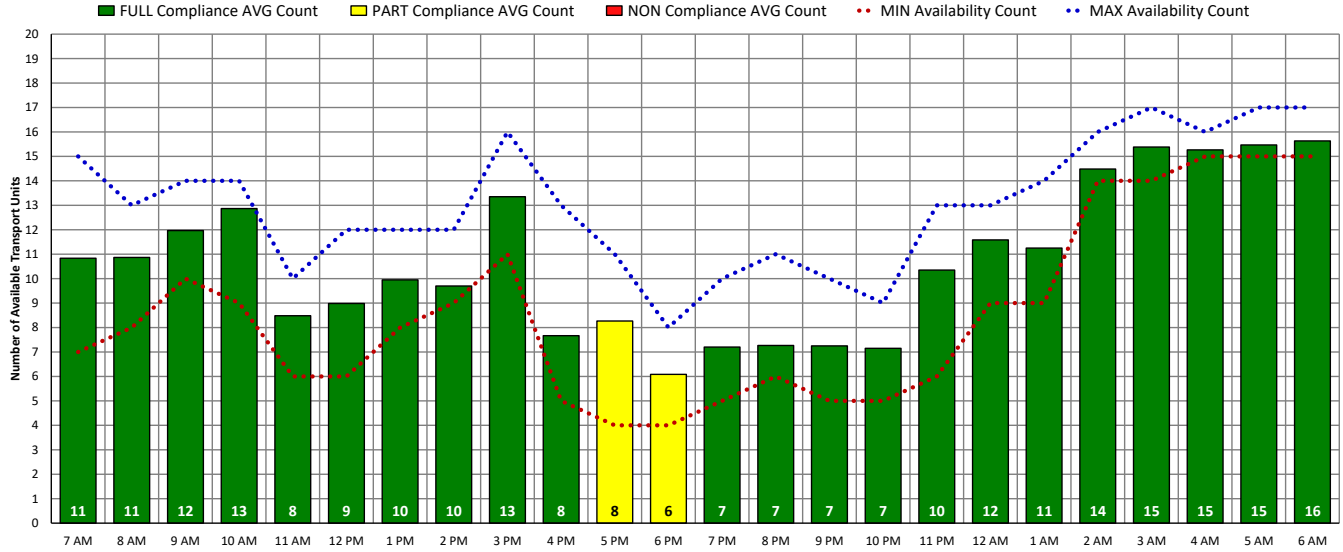


## ALL Transport Unit Availability Compliance (SUN – 12/26/21)

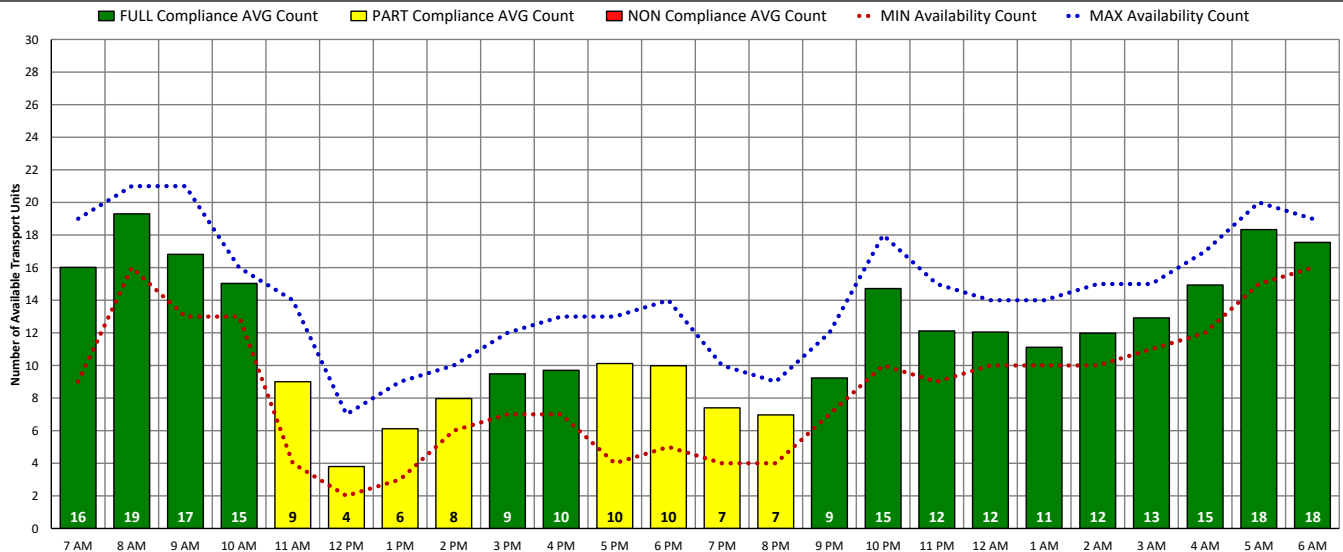


# DISTRICT OF COLUMBIA FIRE AND EMS DEPARTMENT

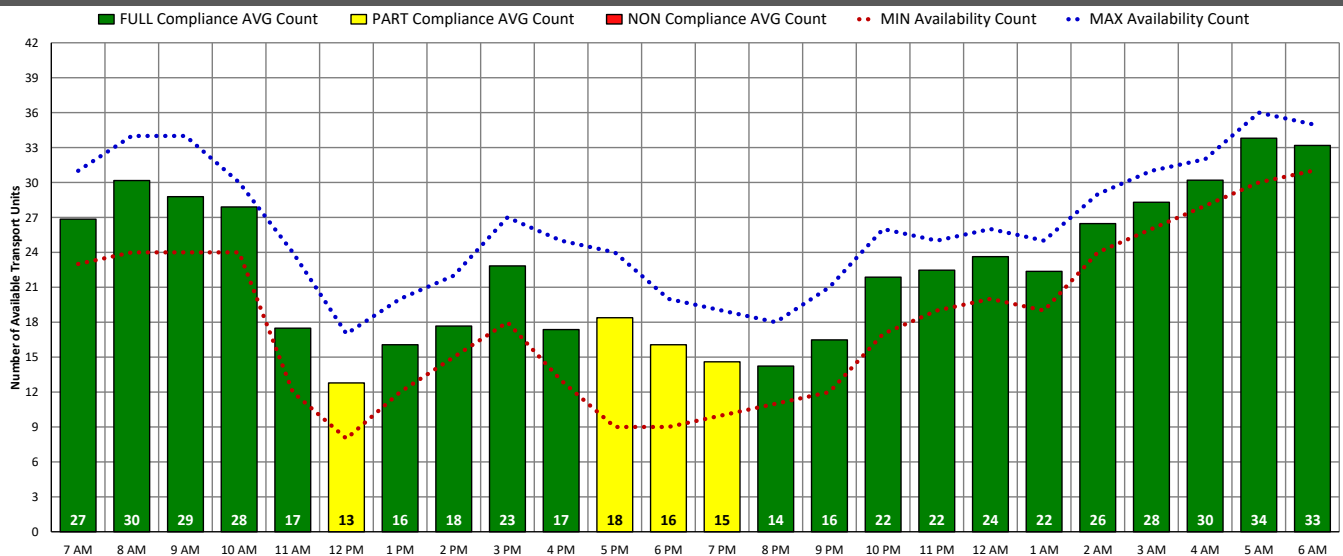
## ALS Transport Unit Availability Compliance (MON – 12/27/21)



## BLS Transport Unit Availability Compliance (MON – 12/27/21)

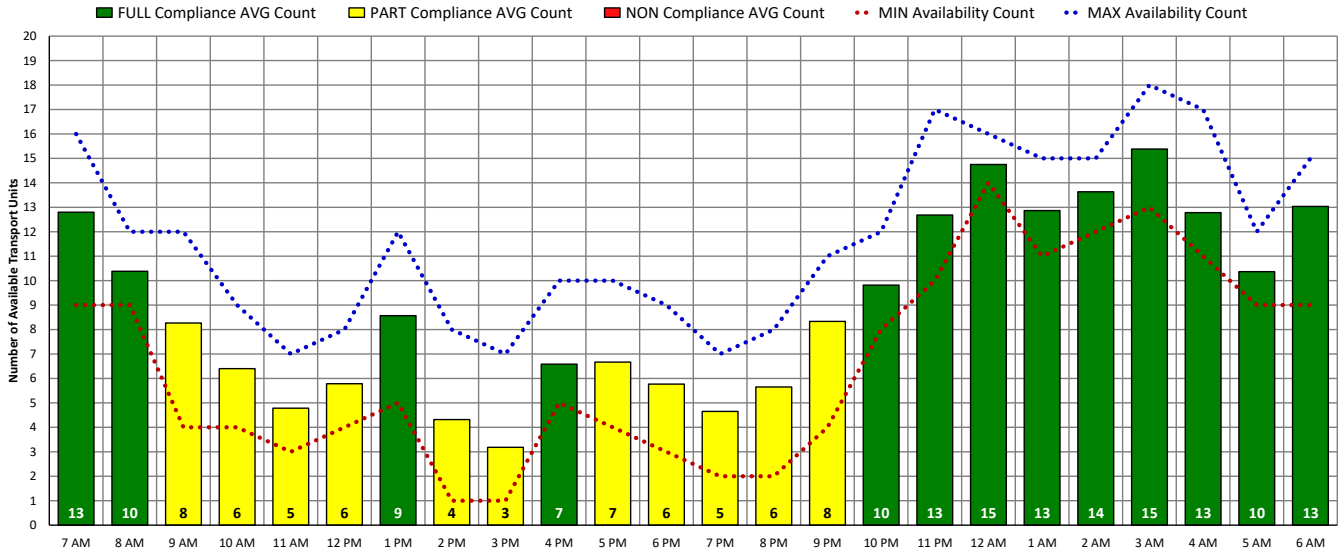


## ALL Transport Unit Availability Compliance (MON – 12/27/21)

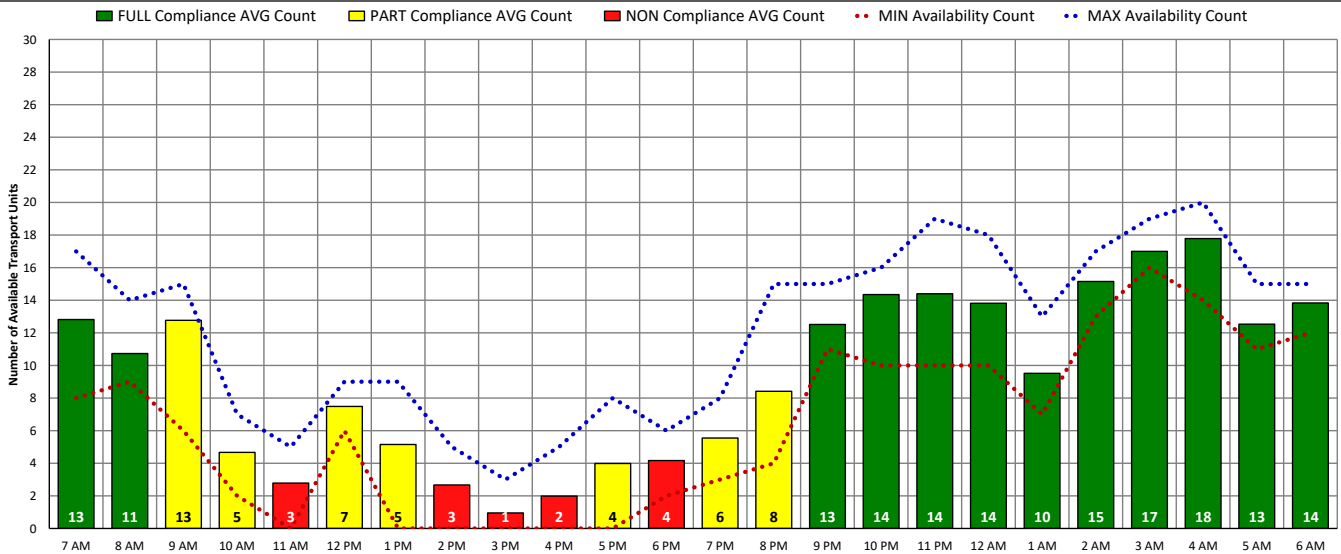


# DISTRICT OF COLUMBIA FIRE AND EMS DEPARTMENT

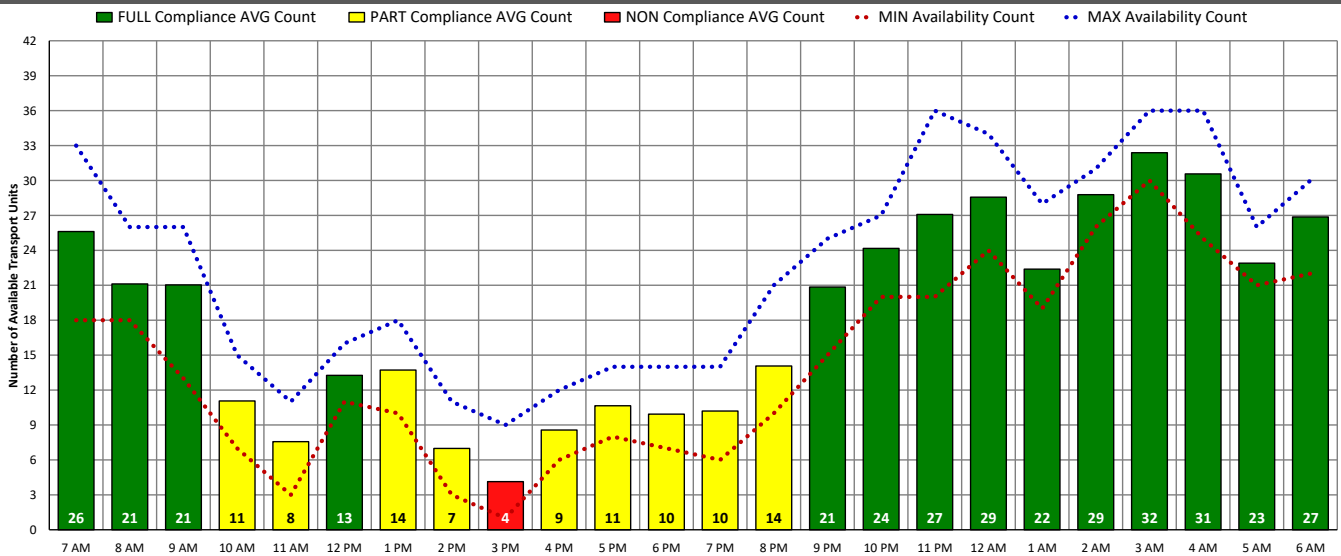
## ALS Transport Unit Availability Compliance (TUE – 12/28/21)



## BLS Transport Unit Availability Compliance (TUE – 12/28/21)

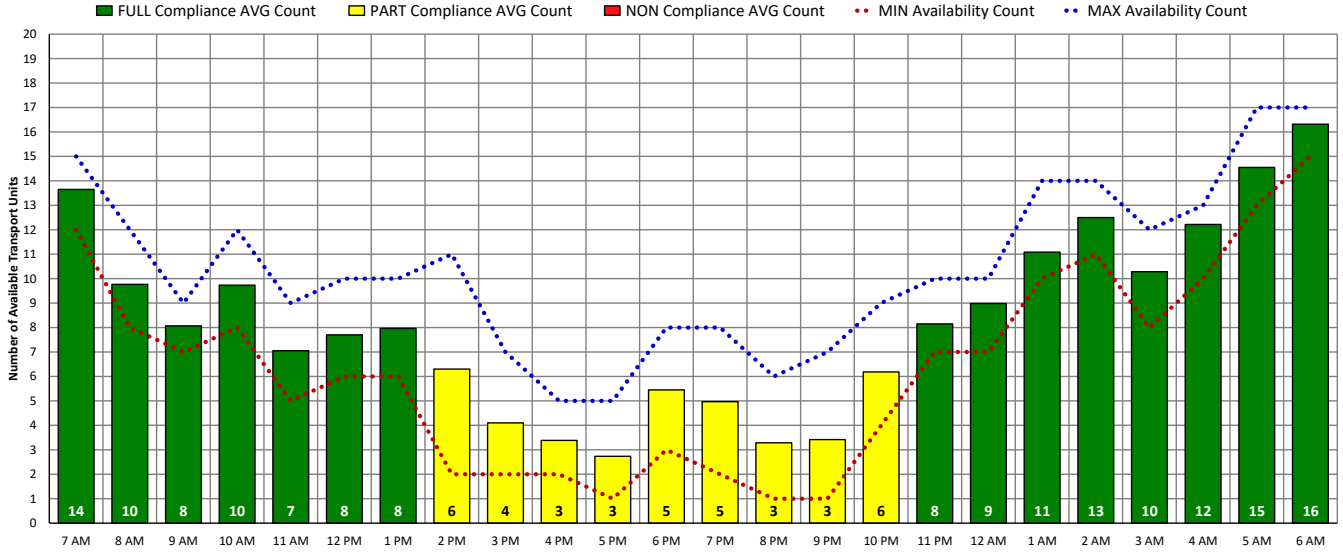


## ALL Transport Unit Availability Compliance (TUE – 12/28/21)

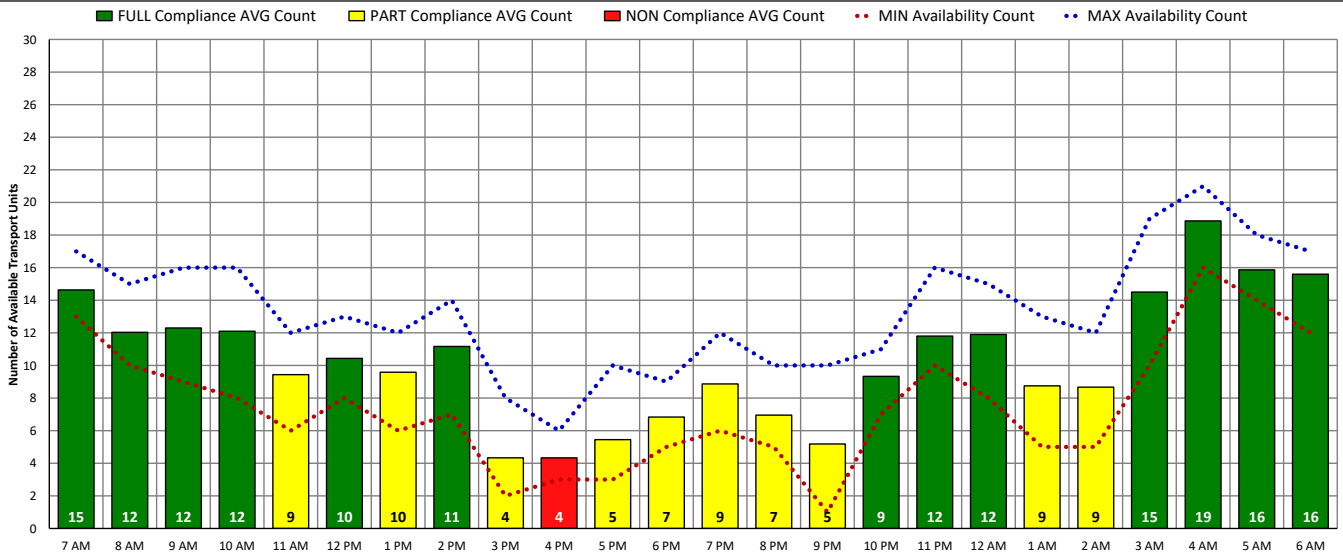


# DISTRICT OF COLUMBIA FIRE AND EMS DEPARTMENT

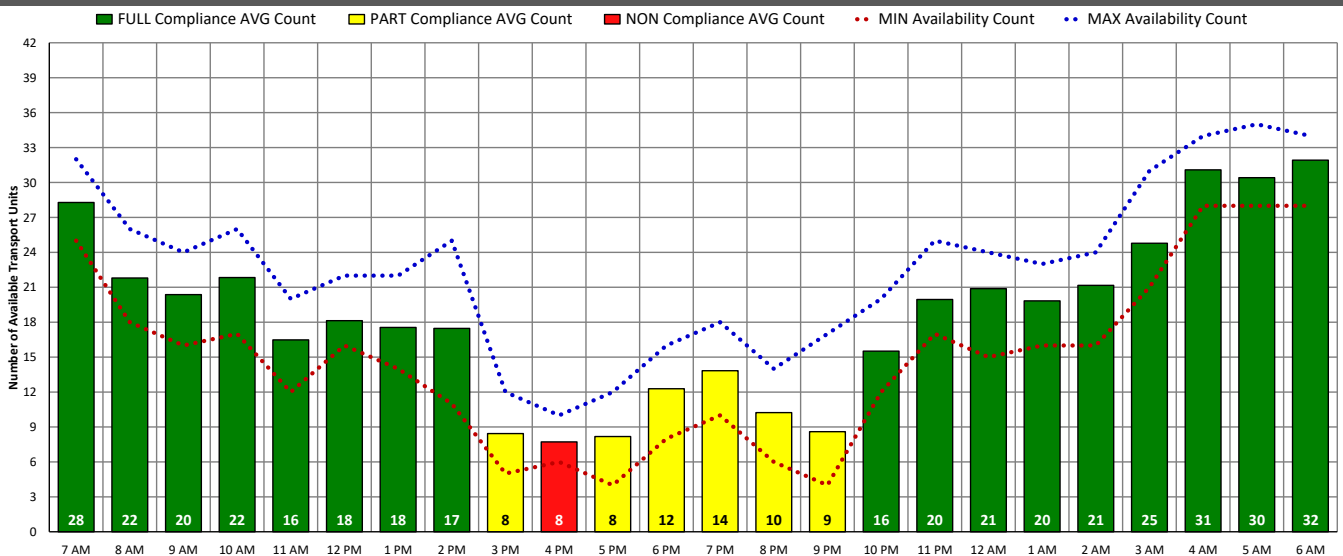
## ALS Transport Unit Availability Compliance (WED – 12/29/21)



## BLS Transport Unit Availability Compliance (WED – 12/29/21)

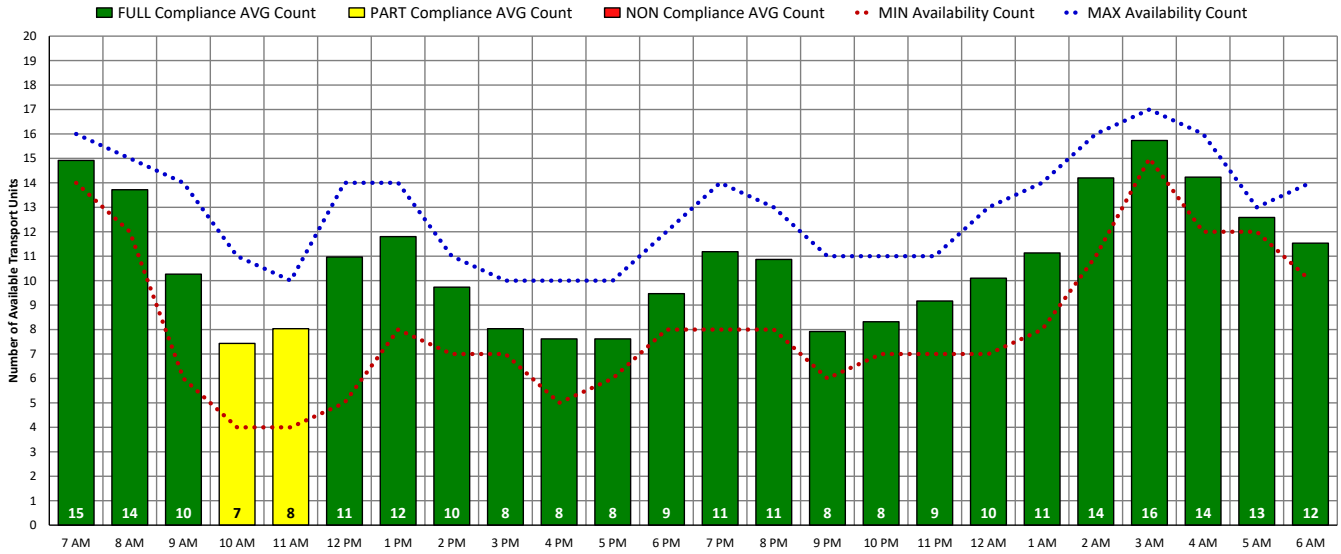


## ALL Transport Unit Availability Compliance (WED – 12/29/21)

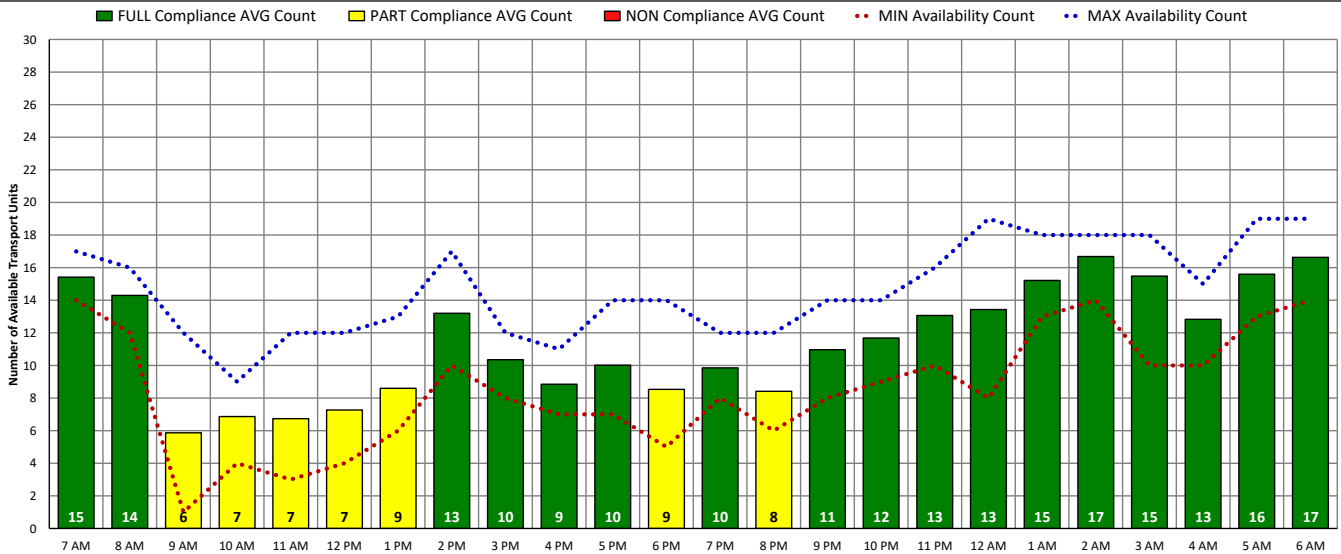


# DISTRICT OF COLUMBIA FIRE AND EMS DEPARTMENT

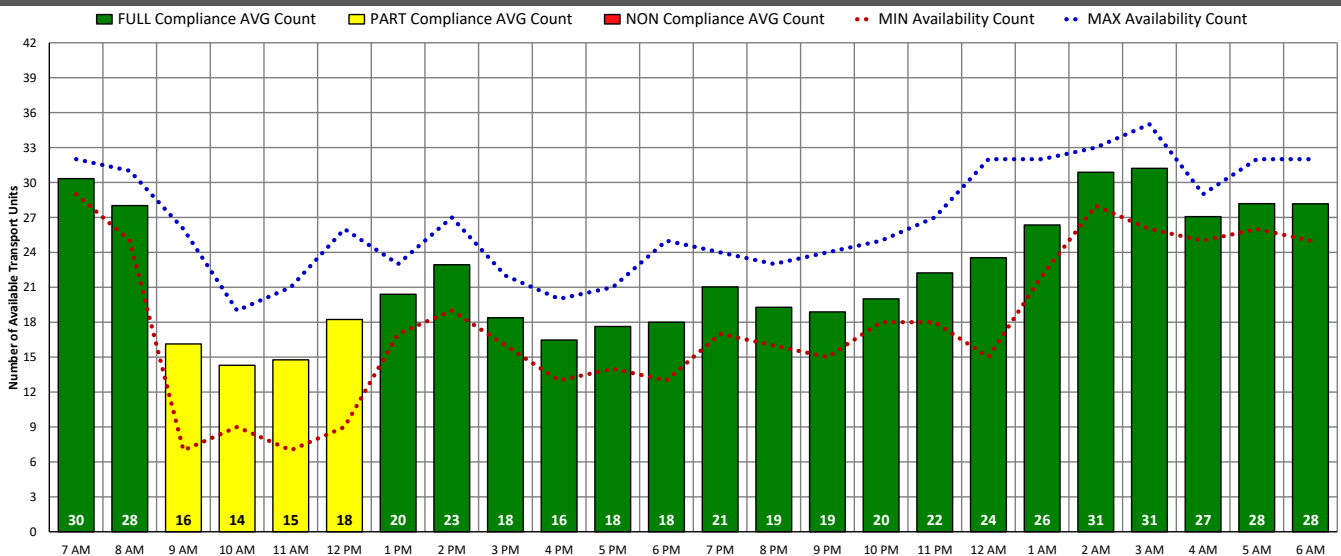
## ALS Transport Unit Availability Compliance (THU – 12/30/21)



## BLS Transport Unit Availability Compliance (THU – 12/30/21)



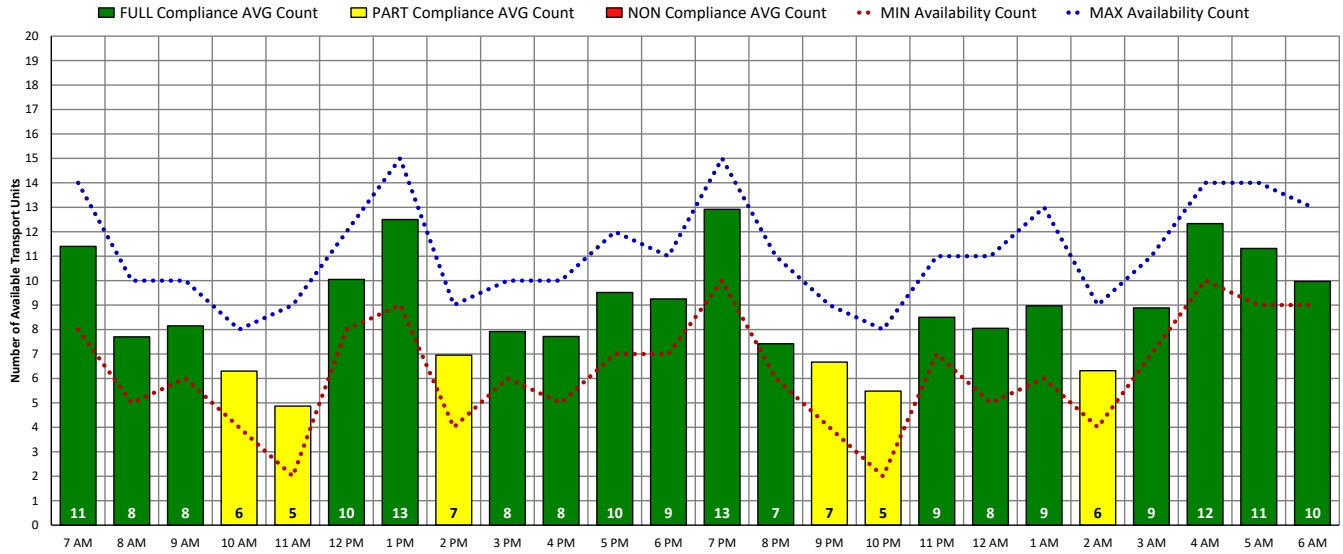
## ALL Transport Unit Availability Compliance (THU – 12/30/21)



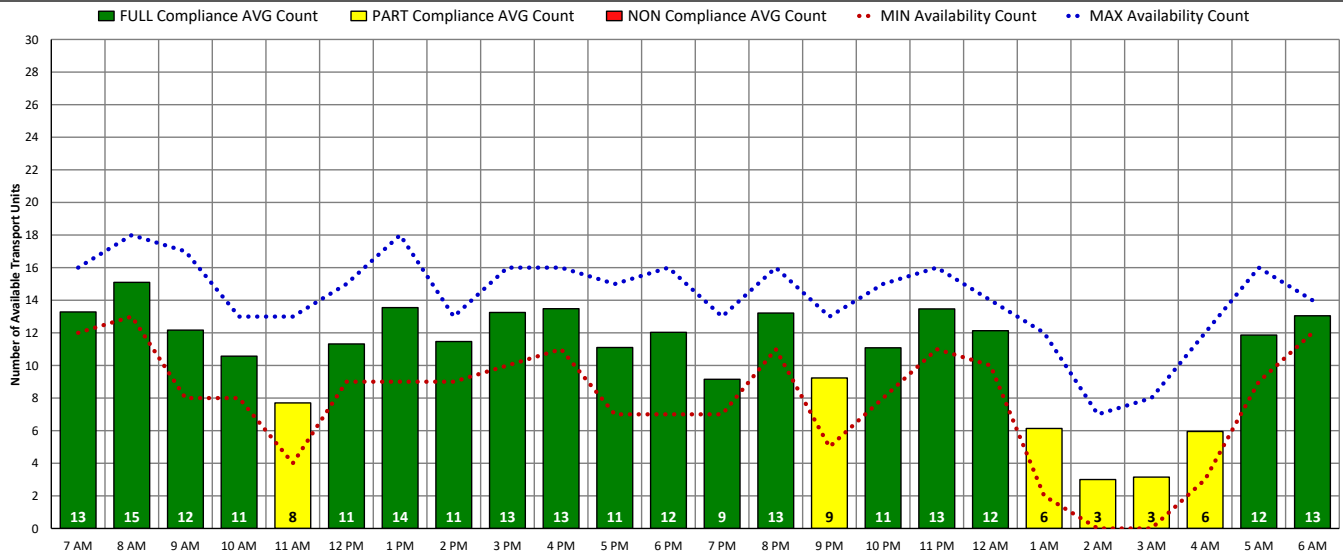


# DISTRICT OF COLUMBIA FIRE AND EMS DEPARTMENT

## ALS Transport Unit Availability Compliance (FRI – 12/31/21)



## BLS Transport Unit Availability Compliance (FRI – 12/31/21)



## ALL Transport Unit Availability Compliance (FRI – 12/31/21)

