

DISTRICT OF COLUMBIA FIRE AND EMS DEPARTMENT



TRANSPORT UNIT AVAILABILITY COMPLIANCE

PRODUCED ON: 12/21/2022

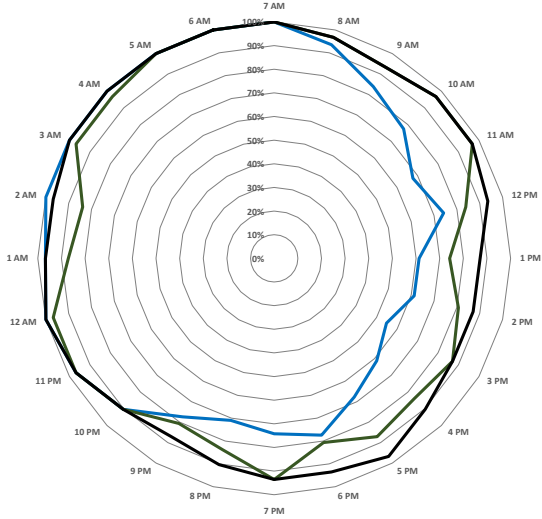
CHART	PAGE
Full Compliance (by Month)	2 – 3
Part Compliance (by Month)	4 – 5
Full and Part Compliance (All Months)	6
Full and Part Compliance by Weekday (All Months)	7 – 13

START DATE	TOTAL DAYS	END DATE
10/01/2020	365	09/30/2021

Transport Unit Availability – FULL Compliance (All Measures ≥ Floor)

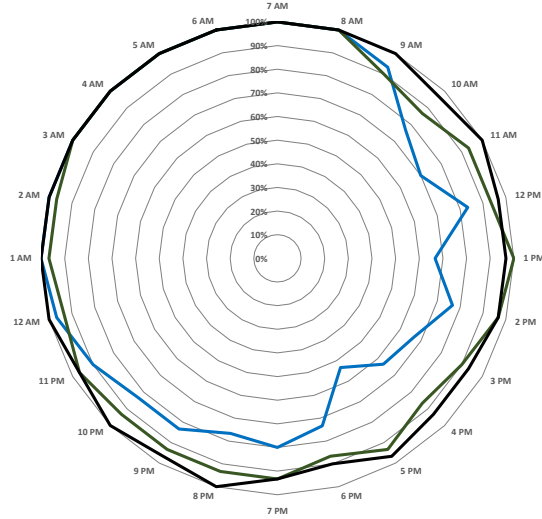
OCTOBER (10/01/20 to 10/31/20)

— ALS ≥ 5 (FULL Compliance) — BLS ≥ 7 (FULL Compliance) — ALL ≥ 11 (FULL Compliance)



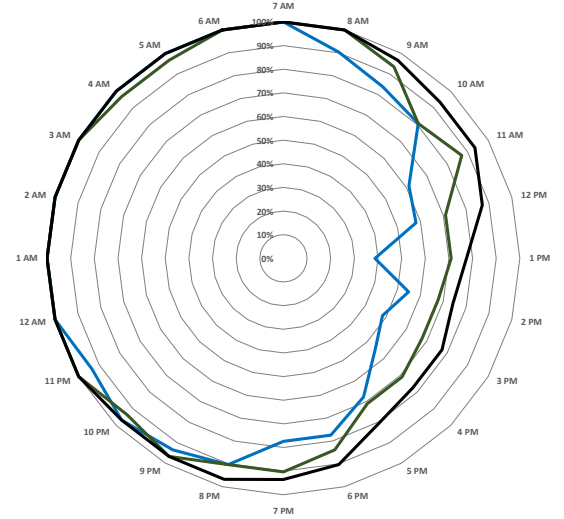
NOVEMBER (11/01/20 to 11/30/20)

— ALS ≥ 5 (FULL Compliance) — BLS ≥ 7 (FULL Compliance) — ALL ≥ 11 (FULL Compliance)



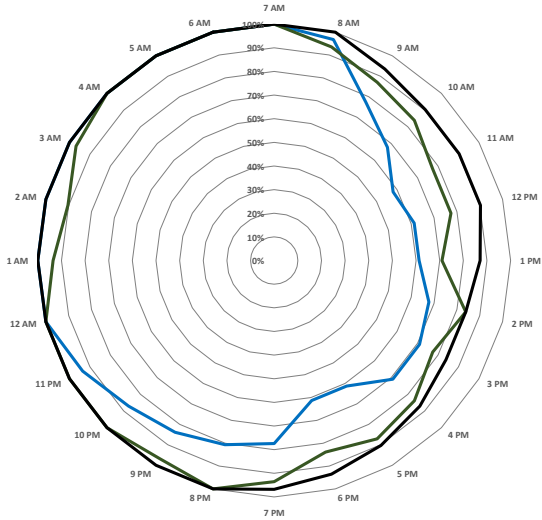
DECEMBER (12/01/20 to 12/31/20)

— ALS ≥ 5 (FULL Compliance) — BLS ≥ 7 (FULL Compliance) — ALL ≥ 11 (FULL Compliance)



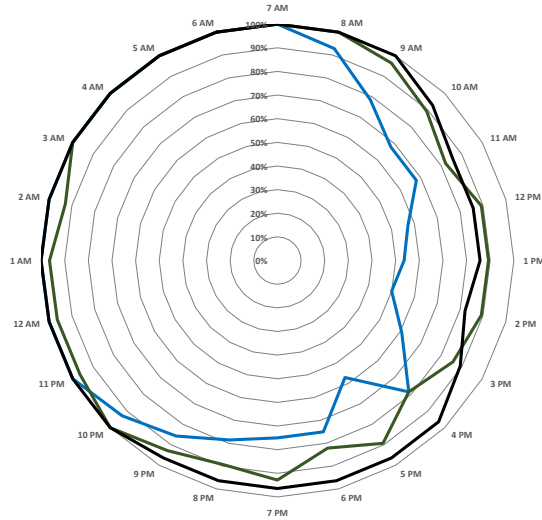
JANUARY (01/01/21 to 01/31/21)

— ALS ≥ 5 (FULL Compliance) — BLS ≥ 7 (FULL Compliance) — ALL ≥ 11 (FULL Compliance)



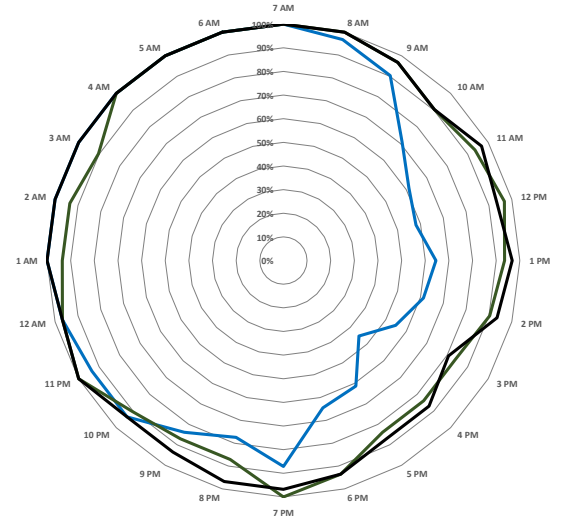
FEBRUARY (02/01/21 to 02/28/21)

— ALS ≥ 5 (FULL Compliance) — BLS ≥ 7 (FULL Compliance) — ALL ≥ 11 (FULL Compliance)



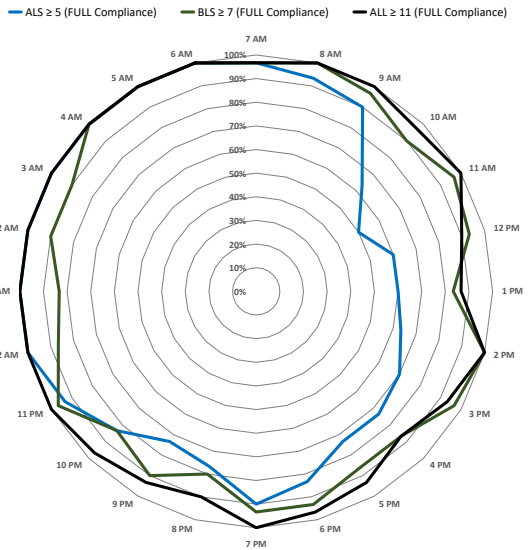
MARCH (03/01/21 to 03/31/21)

— ALS ≥ 5 (FULL Compliance) — BLS ≥ 7 (FULL Compliance) — ALL ≥ 11 (FULL Compliance)

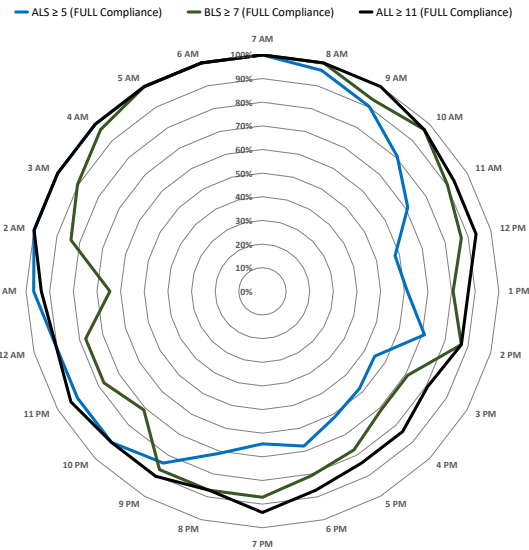


Transport Unit Availability – FULL Compliance (All Measures ≥ Floor)

APRIL (04/01/21 to 04/30/21)



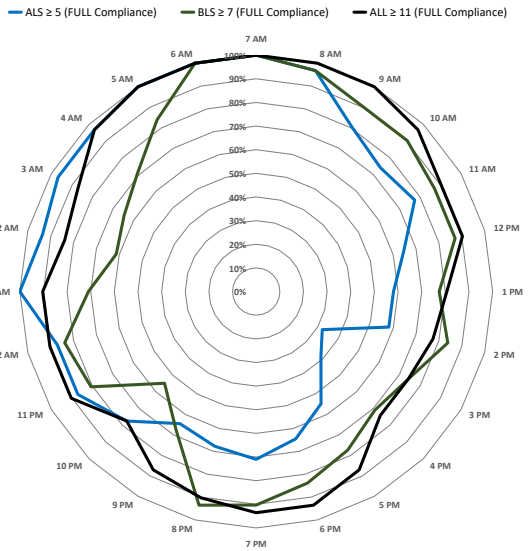
MAY (05/01/21 to 05/31/21)



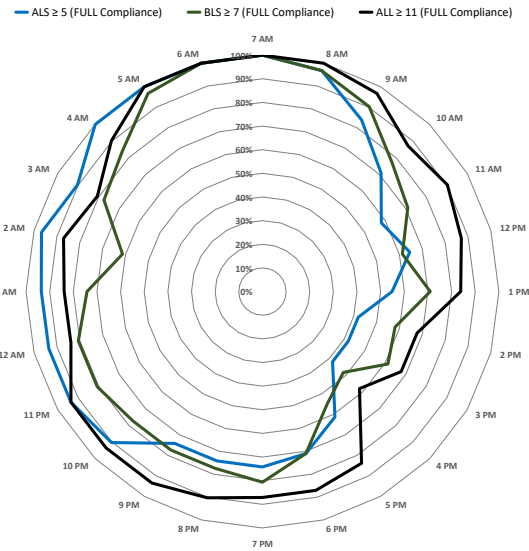
JUNE (06/01/21 to 06/30/21)



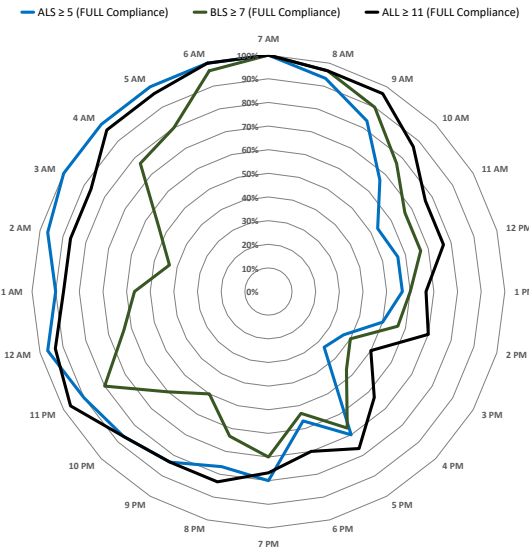
JULY (07/01/21 to 07/31/21)



AUGUST (08/01/21 to 08/31/21)

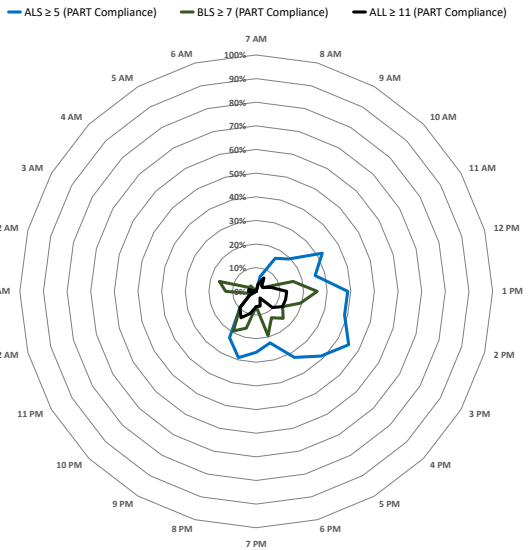


SEPTEMBER (09/01/21 to 09/30/21)

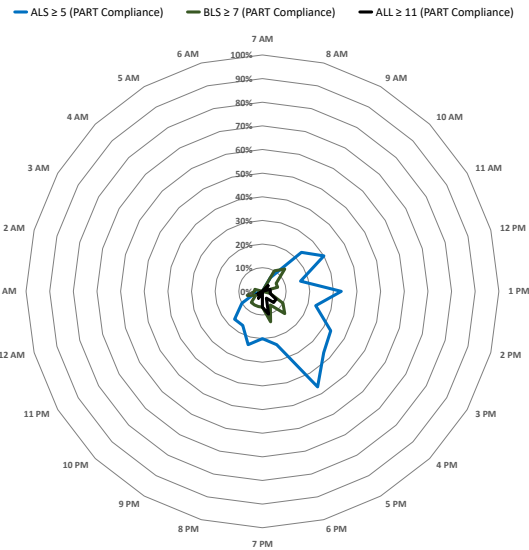


Transport Unit Availability – PART Compliance (Some Measures < Floor)

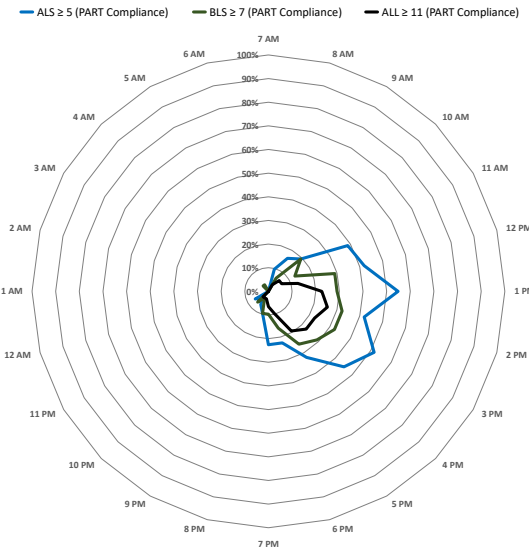
OCTOBER (10/01/20 to 10/31/20)



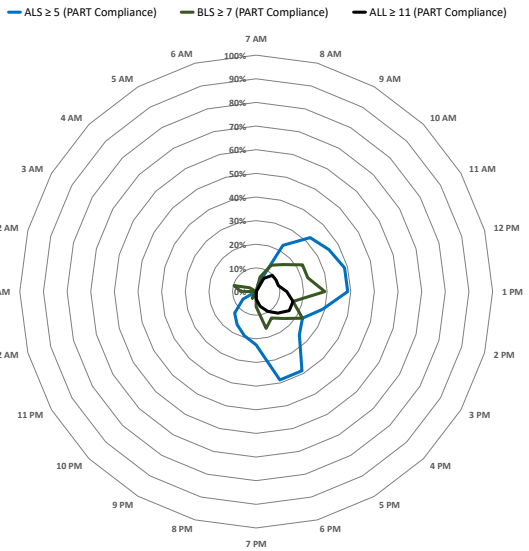
NOVEMBER (11/01/20 to 11/30/20)



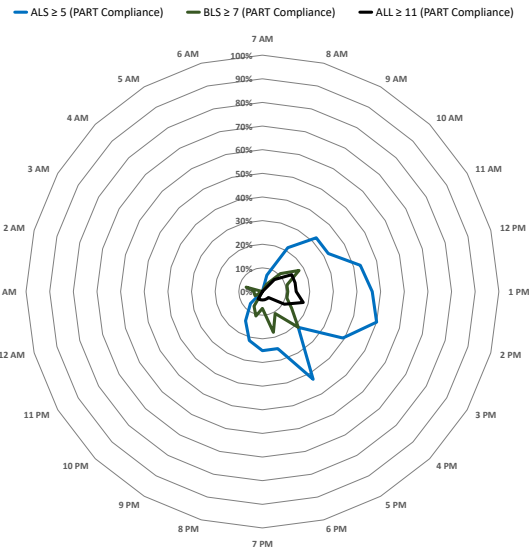
DECEMBER (12/01/20 to 12/31/20)



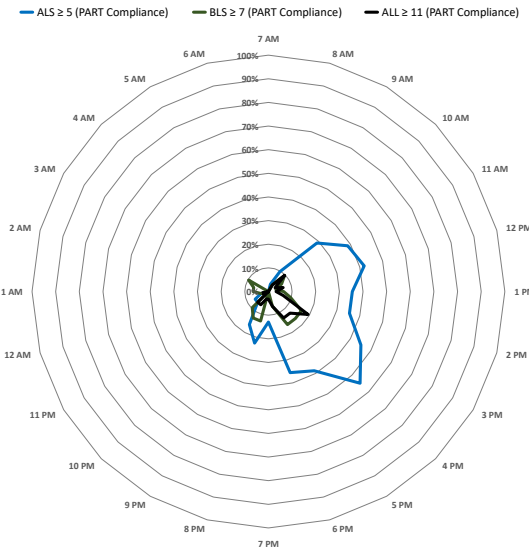
JANUARY (01/01/21 to 01/31/21)



FEBRUARY (02/01/21 to 02/28/21)



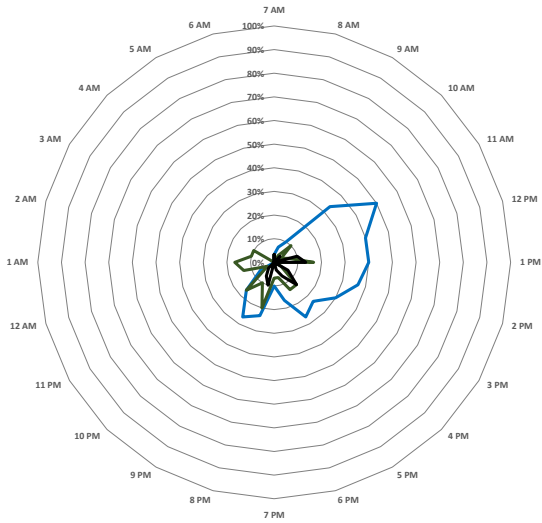
MARCH (03/01/21 to 03/31/21)



Transport Unit Availability – PART Compliance (Some Measures < Floor)

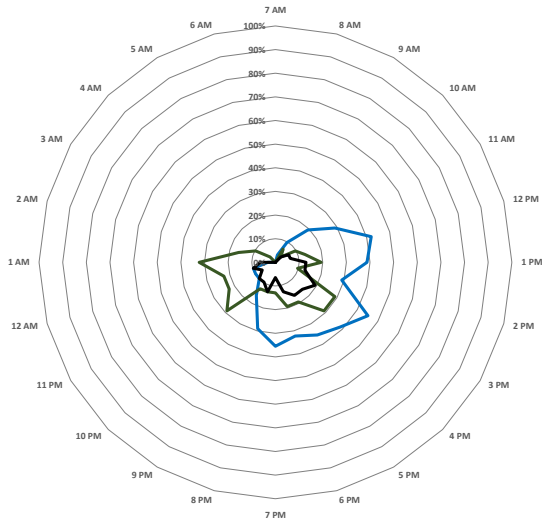
APRIL (04/01/21 to 04/30/21)

— ALS ≥ 5 (PART Compliance) — BLS ≥ 7 (PART Compliance) — ALL ≥ 11 (PART Compliance)



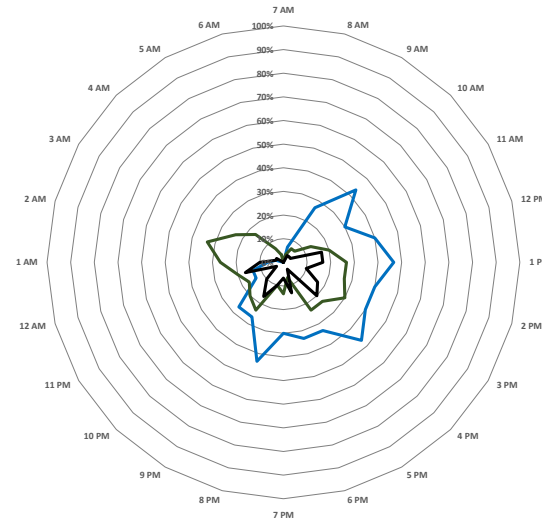
MAY (05/01/21 to 05/31/21)

— ALS ≥ 5 (PART Compliance) — BLS ≥ 7 (PART Compliance) — ALL ≥ 11 (PART Compliance)



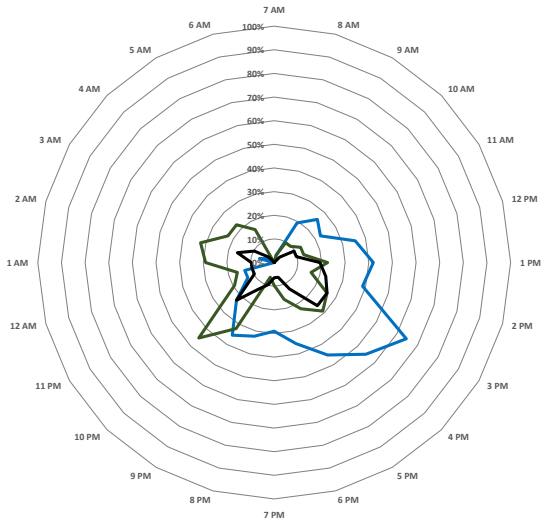
JUNE (06/01/21 to 06/30/21)

— ALS ≥ 5 (PART Compliance) — BLS ≥ 7 (PART Compliance) — ALL ≥ 11 (PART Compliance)



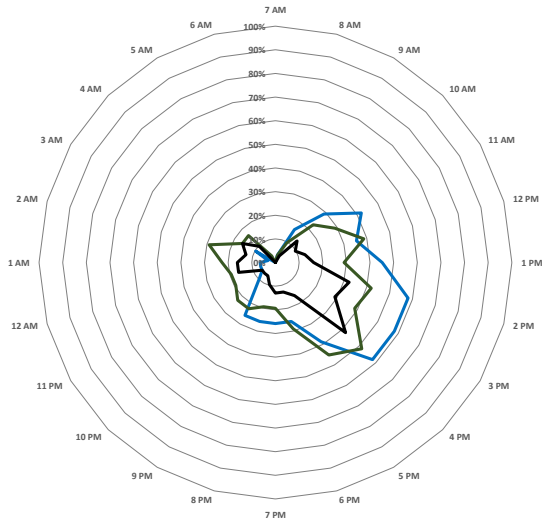
JULY (07/01/21 to 07/31/21)

— ALS ≥ 5 (PART Compliance) — BLS ≥ 7 (PART Compliance) — ALL ≥ 11 (PART Compliance)



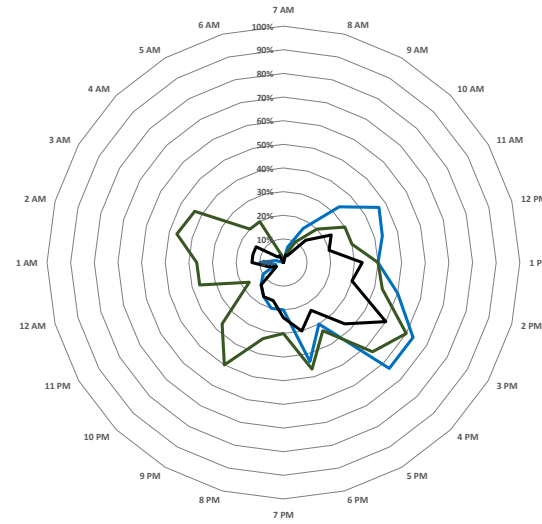
AUGUST (08/01/21 to 08/31/21)

— ALS ≥ 5 (PART Compliance) — BLS ≥ 7 (PART Compliance) — ALL ≥ 11 (PART Compliance)



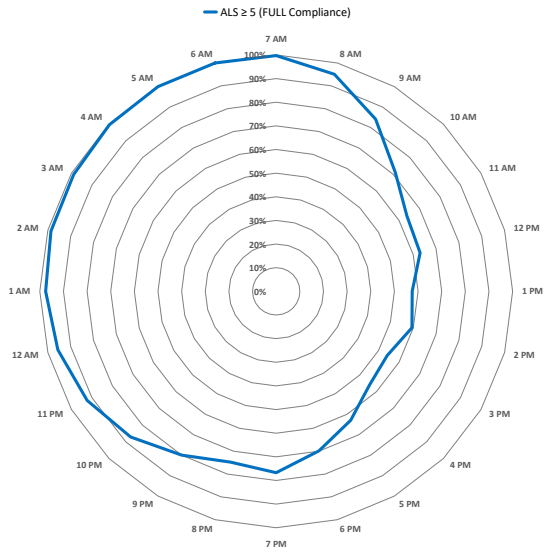
SEPTEMBER (09/01/21 to 09/30/21)

— ALS ≥ 5 (PART Compliance) — BLS ≥ 7 (PART Compliance) — ALL ≥ 11 (PART Compliance)



Transport Unit Availability – FULL and PART Compliance (All Months)

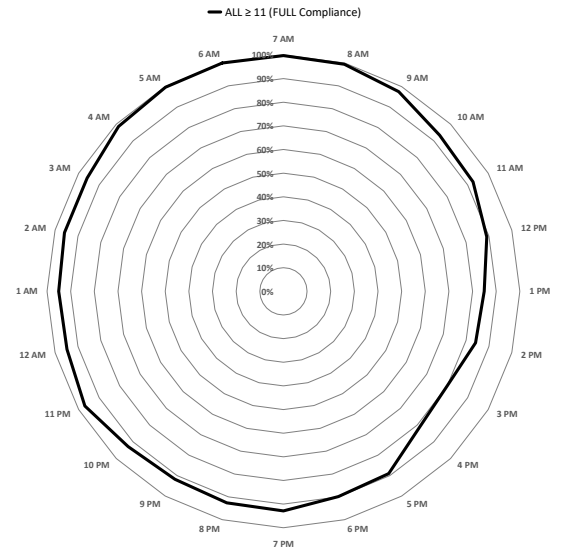
ALS All Months - FULL (10/01/20 to 09/30/21)



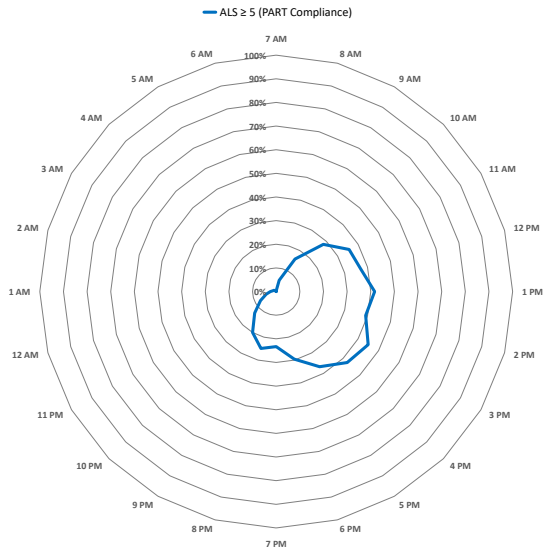
BLS All Months - FULL (10/01/20 to 09/30/21)



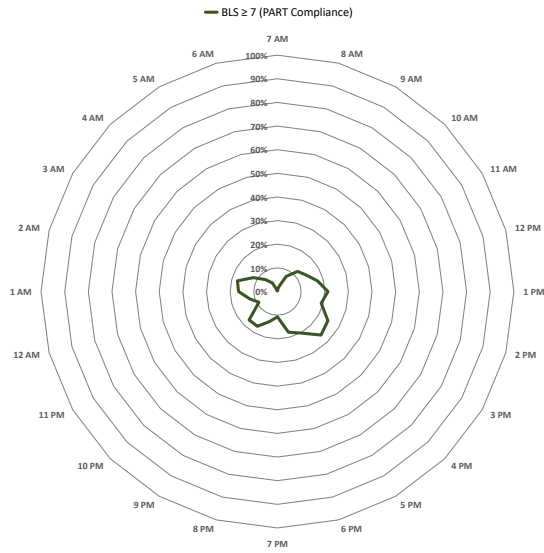
TUA All Months - FULL (10/01/20 to 09/30/21)



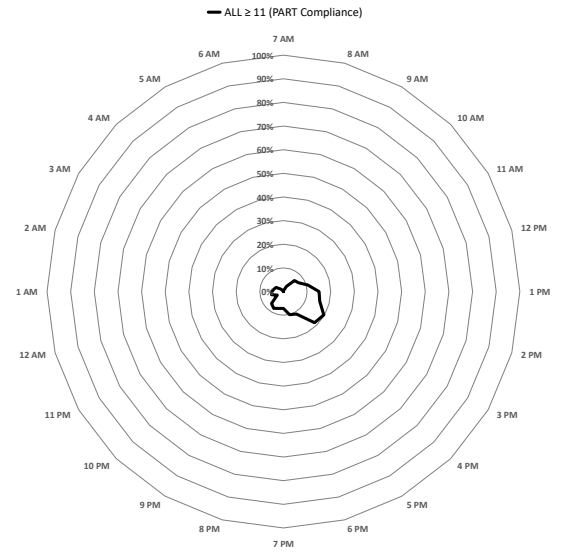
ALS All Months - PART (10/01/20 to 09/30/21)



BLS All Months - PART (10/01/20 to 09/30/21)

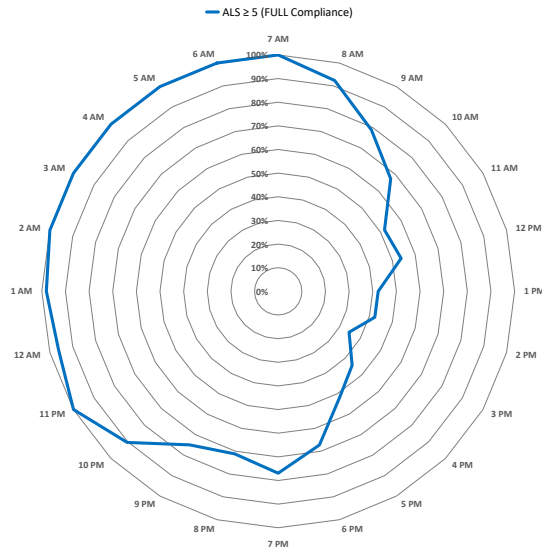


TUA All Months - PART (10/01/20 to 09/30/21)



Transport Unit Availability by Weekday – FULL and PART Compliance (All Months)

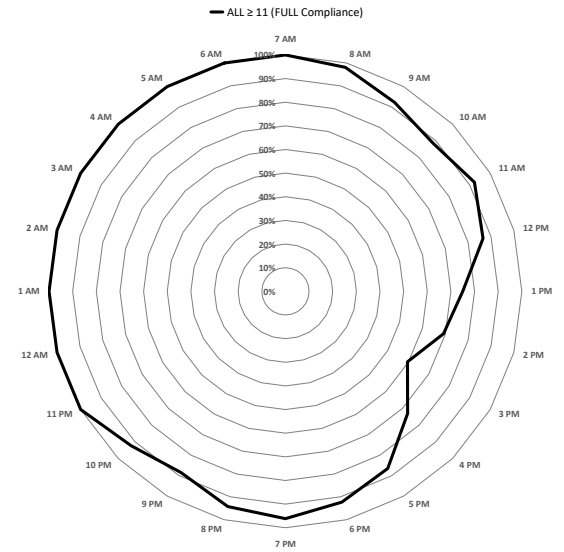
ALS on MON - FULL (10/01/20 to 09/30/21)



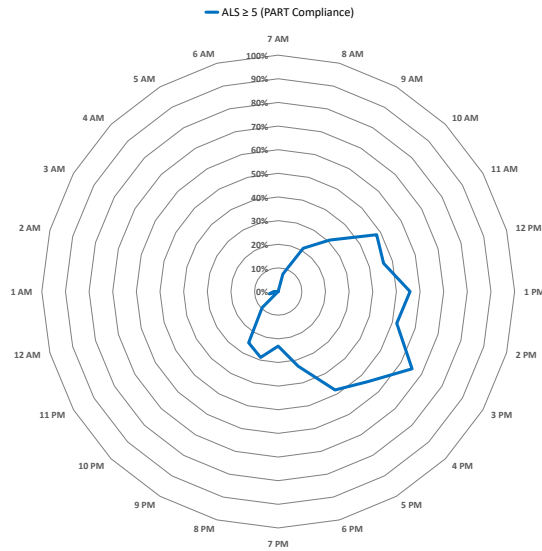
BLS on MON - FULL (10/01/20 to 09/30/21)



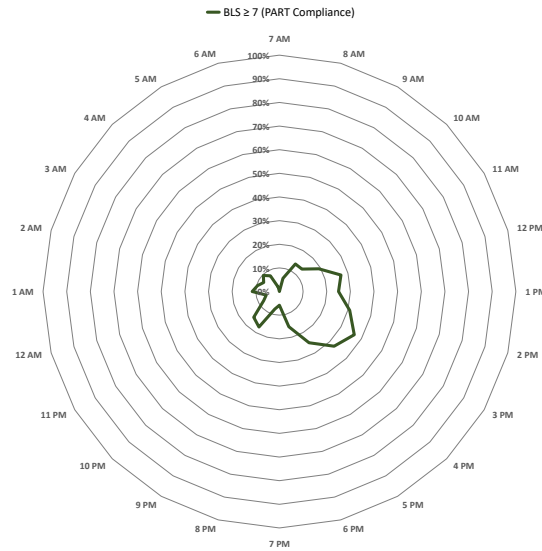
ALL on MON - FULL (10/01/20 to 09/30/21)



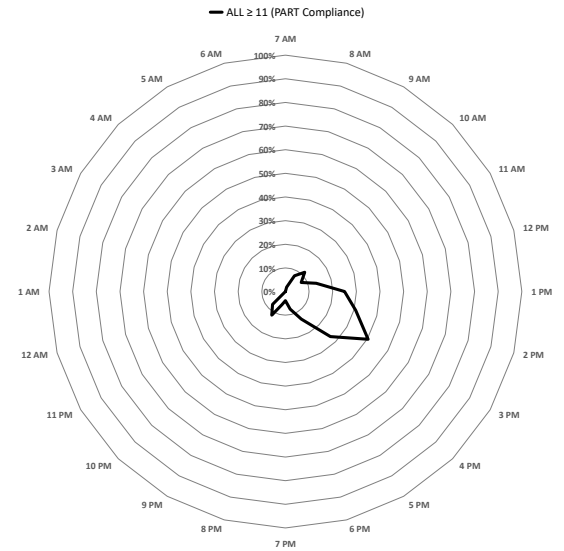
ALS on MON - PART (10/01/20 to 09/30/21)



BLS on MON - PART (10/01/20 to 09/30/21)

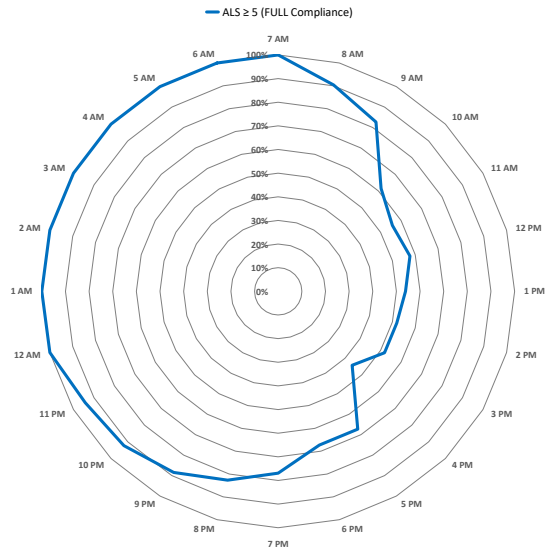


ALL on MON - PART (10/01/20 to 09/30/21)



Transport Unit Availability by Weekday – FULL and PART Compliance (All Months)

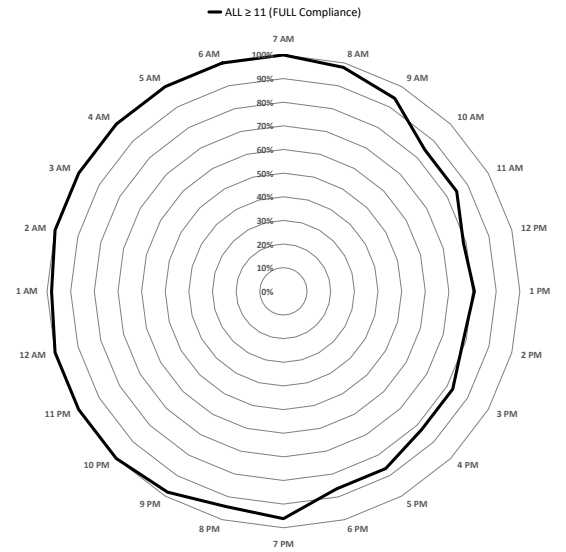
ALS on TUE - FULL (10/01/20 to 09/30/21)



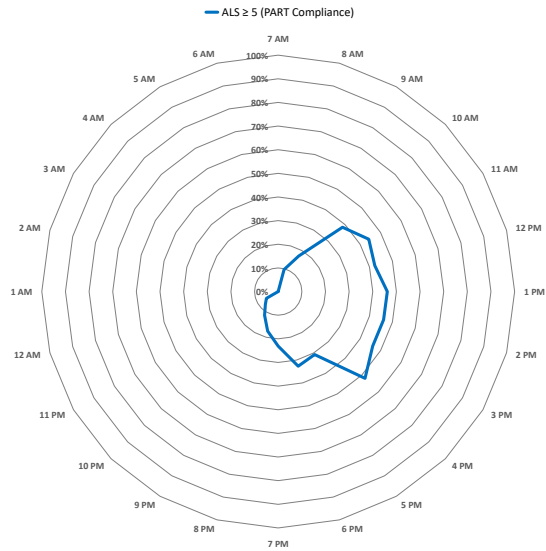
BLS on TUE - FULL (10/01/20 to 09/30/21)



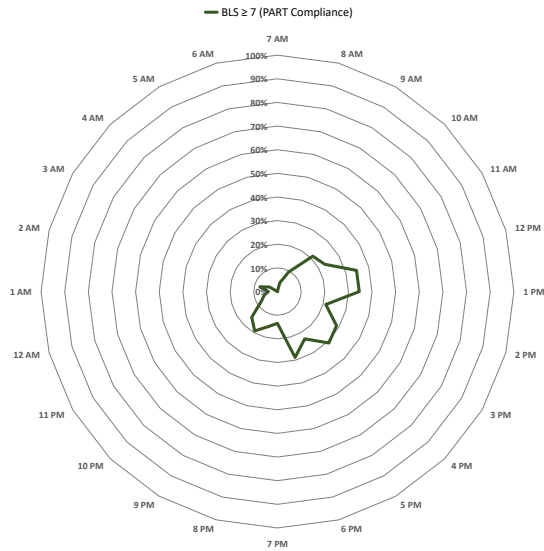
ALL on TUE - FULL (10/01/20 to 09/30/21)



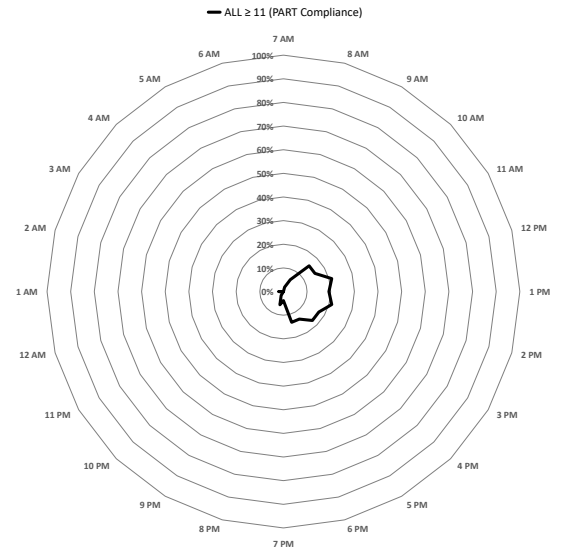
ALS on TUE - PART (10/01/20 to 09/30/21)



BLS on TUE - PART (10/01/20 to 09/30/21)

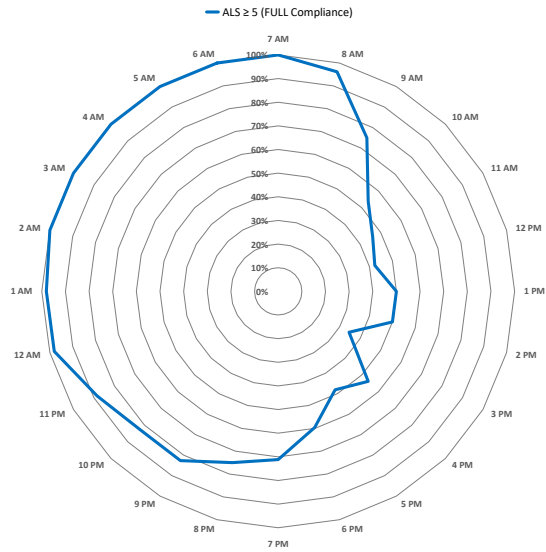


ALL on TUE - PART (10/01/20 to 09/30/21)

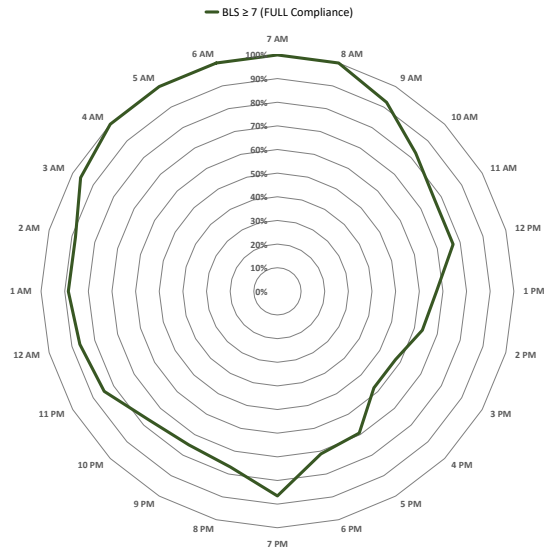


Transport Unit Availability by Weekday – FULL and PART Compliance (All Months)

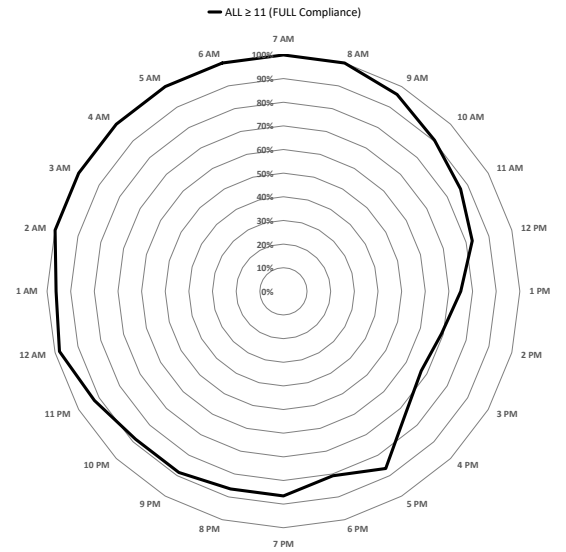
ALS on WED - FULL (10/01/20 to 09/30/21)



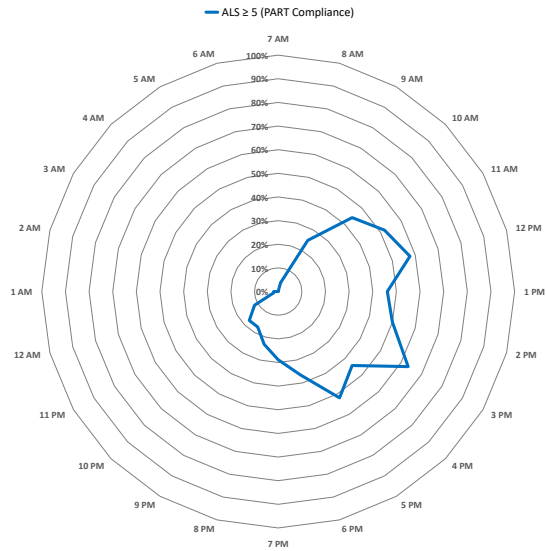
BLS on WED - FULL (10/01/20 to 09/30/21)



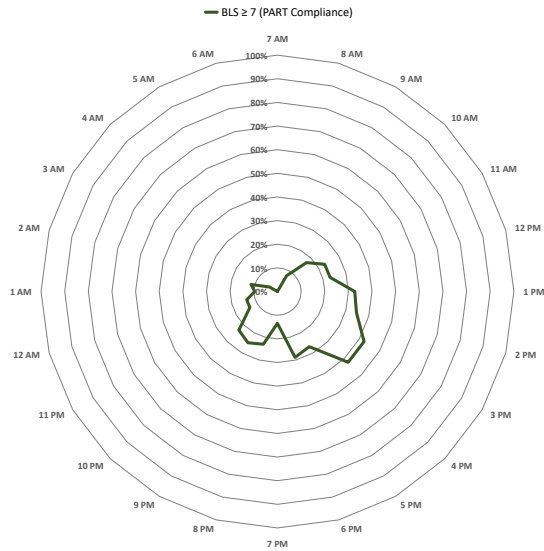
ALL on WED - FULL (10/01/20 to 09/30/21)



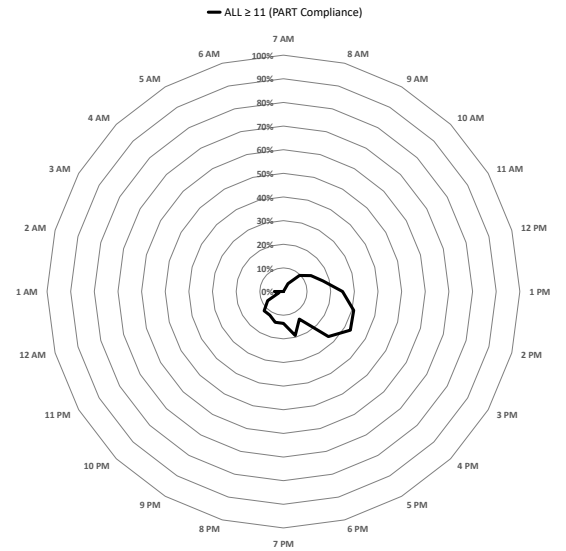
ALS on WED - PART (10/01/20 to 09/30/21)



BLS on WED - PART (10/01/20 to 09/30/21)



ALL on WED - PART (10/01/20 to 09/30/21)

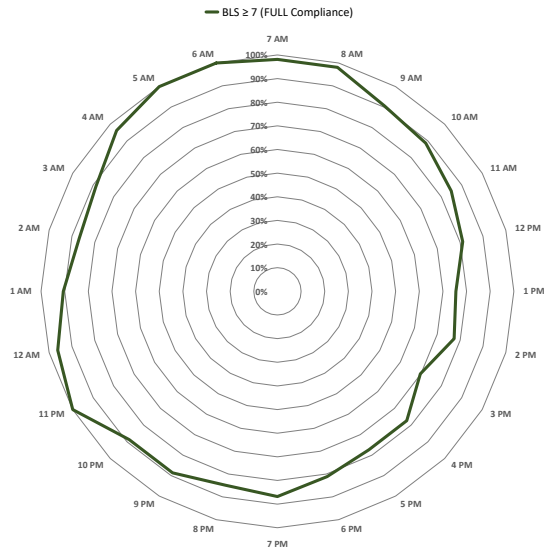


Transport Unit Availability by Weekday – FULL and PART Compliance (All Months)

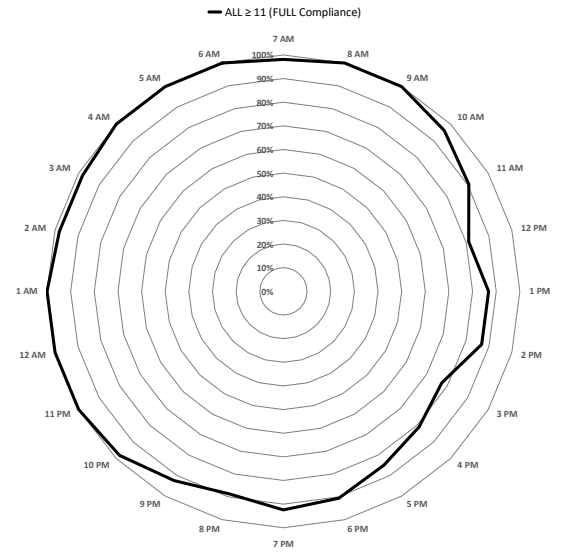
ALS on THU - FULL (10/01/20 to 09/30/21)



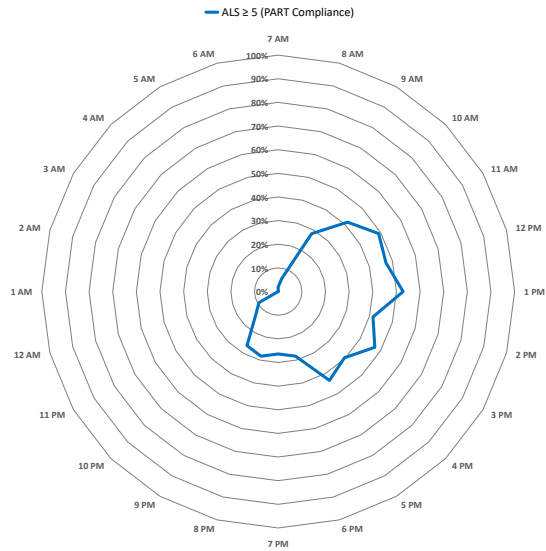
BLS on THU - FULL (10/01/20 to 09/30/21)



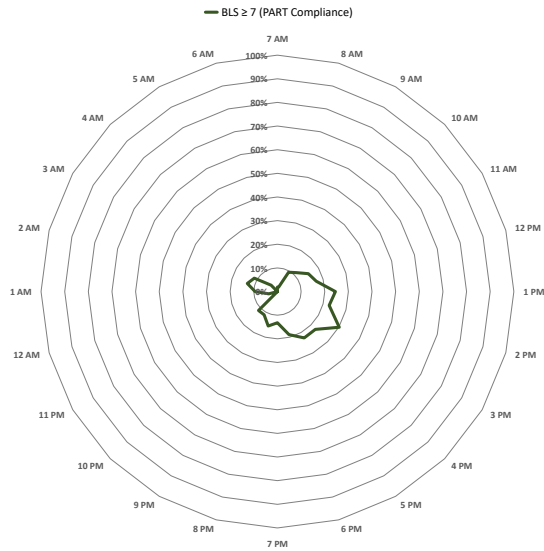
ALL on THU - FULL (10/01/20 to 09/30/21)



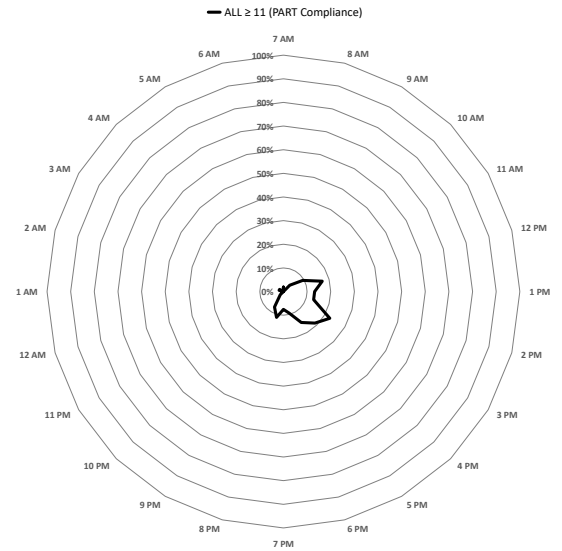
ALS on THU - PART (10/01/20 to 09/30/21)



BLS on THU - PART (10/01/20 to 09/30/21)

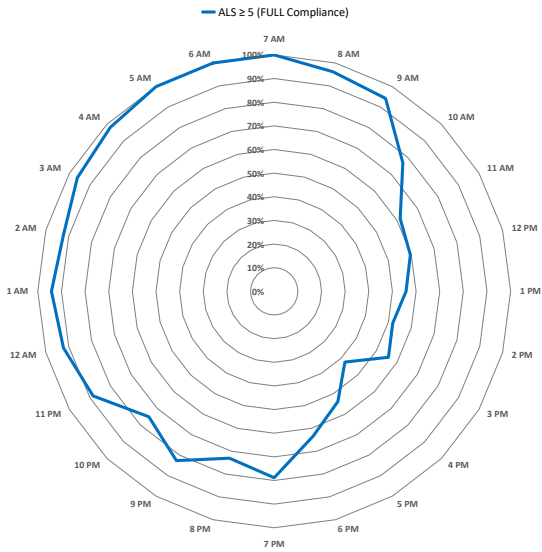


ALL on THU - PART (10/01/20 to 09/30/21)



Transport Unit Availability by Weekday – FULL and PART Compliance (All Months)

ALS on FRI - FULL (10/01/20 to 09/30/21)



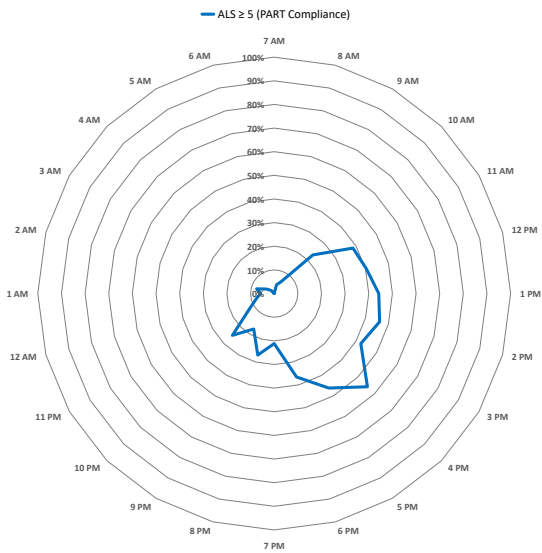
BLS on FRI - FULL (10/01/20 to 09/30/21)



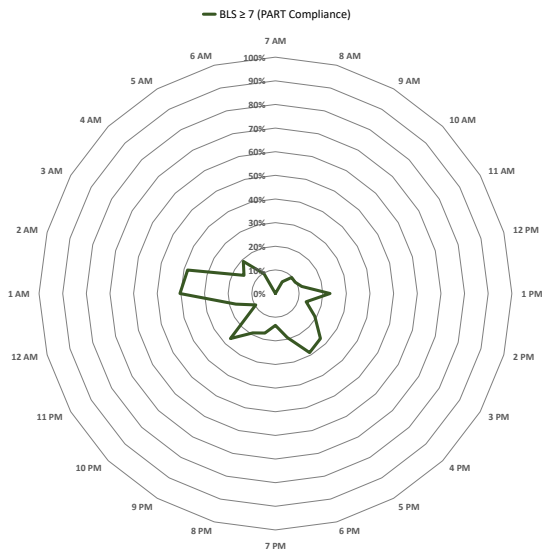
ALL on FRI - FULL (10/01/20 to 09/30/21)



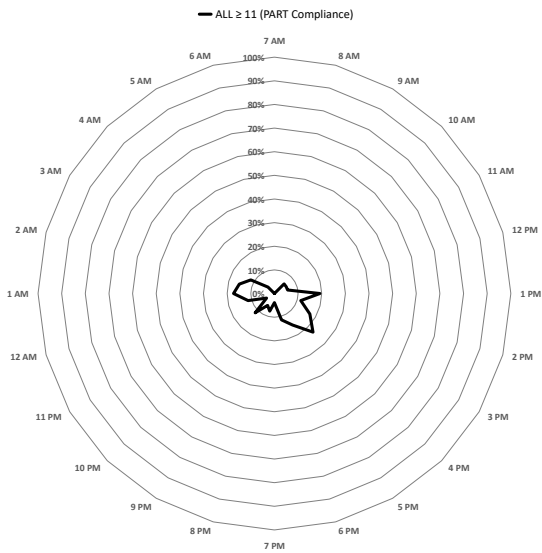
ALS on FRI - PART (10/01/20 to 09/30/21)



BLS on FRI - PART (10/01/20 to 09/30/21)

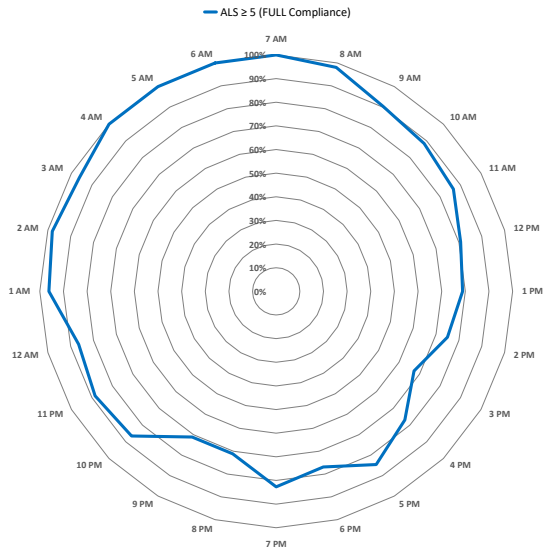


ALL on FRI - PART (10/01/20 to 09/30/21)

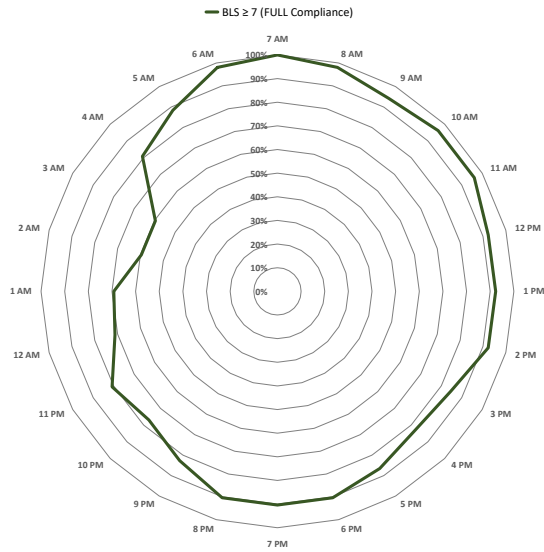


Transport Unit Availability by Weekday – FULL and PART Compliance (All Months)

ALS on SAT - FULL (10/01/20 to 09/30/21)



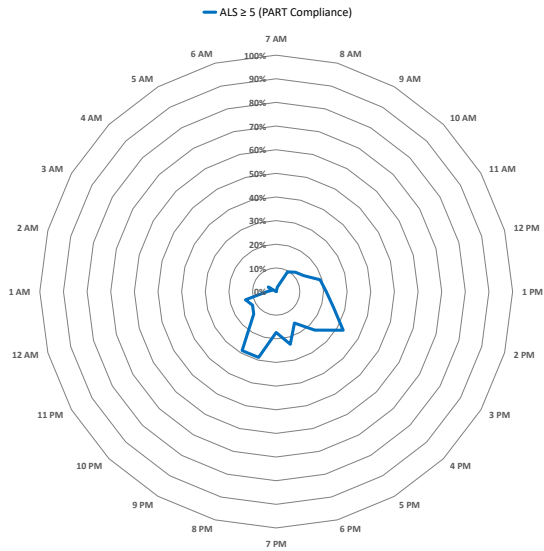
BLS on SAT - FULL (10/01/20 to 09/30/21)



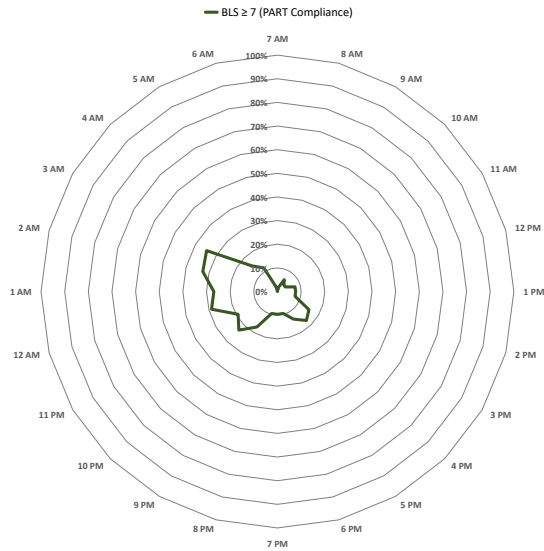
ALL on SAT - FULL (10/01/20 to 09/30/21)



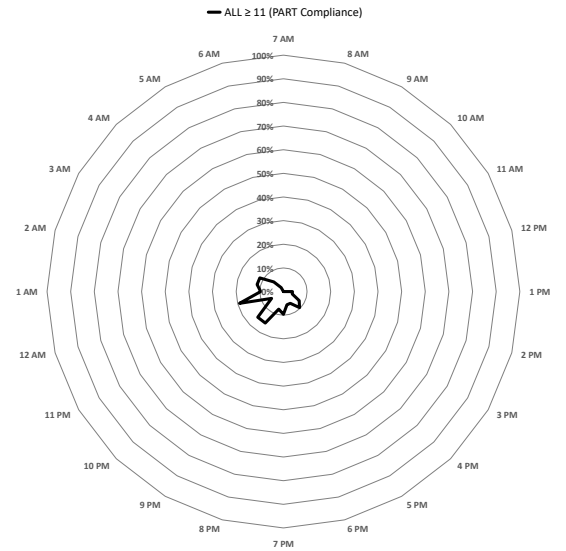
ALS on SAT - PART (10/01/20 to 09/30/21)



BLS on SAT - PART (10/01/20 to 09/30/21)

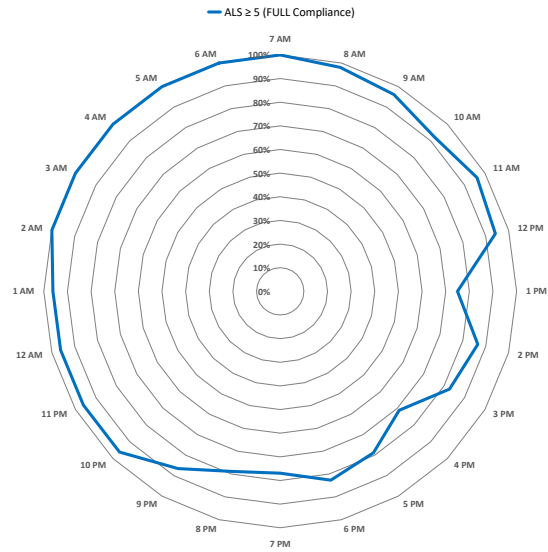


ALL on SAT - PART (10/01/20 to 09/30/21)

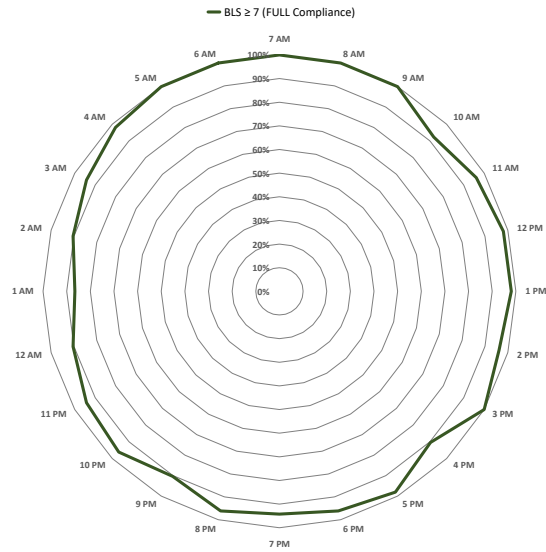


Transport Unit Availability by Weekday – FULL and PART Compliance (All Months)

ALS on SUN - FULL (10/01/20 to 09/30/21)



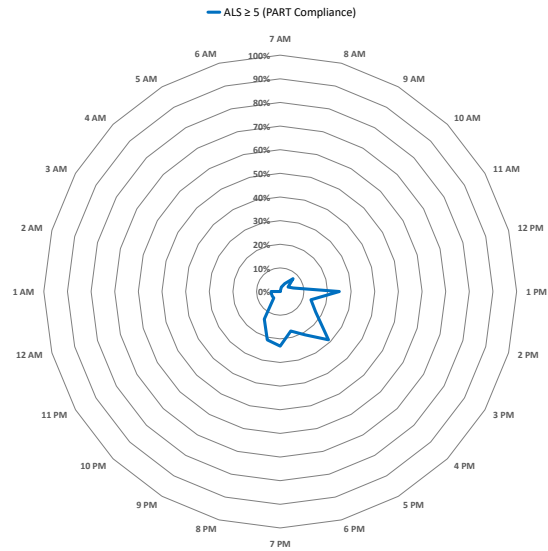
BLS on SUN - FULL (10/01/20 to 09/30/21)



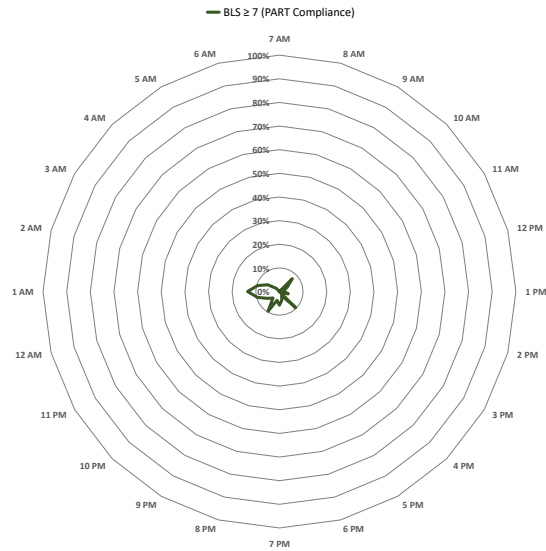
ALL on SUN - FULL (10/01/20 to 09/30/21)



ALS on SUN - PART (10/01/20 to 09/30/21)



BLS on SUN - PART (10/01/20 to 09/30/21)



ALL on SUN - PART (10/01/20 to 09/30/21)

