

District of Columbia

Fire and Emergency Medical Services Department



FY 2017 EMS CQI Patient Case Review Measures

PAGE	MEASURE	MEASURE DESCRIPTION
2	STEMI	EMS CQI Review Tables (Monthly)
2	STEMI	EMS CQI Review Tables (Quarterly)
3	Stroke/CVA	EMS CQI Review Tables (Monthly)
3	Stroke/CVA	EMS CQI Review Tables (Quarterly)
4	Trauma	EMS CQI Review Tables (Monthly)
4	Trauma	EMS CQI Review Tables (Quarterly)
5	STEMI	Required Elements Chart
6	STEMI	Completed Required Elements Chart
7	Stroke/CVA	Required Elements Chart
8	Stroke/CVA	Completed Required Elements Chart
9	Trauma	Required Elements Chart
10	Trauma	Completed Required Elements Chart

Produced On: 10/20/2017

District of Columbia Fire and EMS Department
FY 2017 EMS CQI Case Review (STEMI Patients)

STEMI (FY 2017) Measure	OCT 2016	NOV 2016	DEC 2016	JAN 2017	FEB 2017	MAR 2017	APR 2017	MAY 2017	JUN 2017	JUL 2017	AUG 2017	SEP 2017	FYE 2017
Number of Identified STEMI Cases Reviewed	5	6	6	4	5	7	7	14	16	10	15	19	114
Aspirin Appropriately Administered	5	6	6	4	5	6	7	14	16	10	15	19	113
12 Lead EKG Completed	5	6	6	4	5	7	7	14	16	10	15	19	114
Patient Transport to STEMI Center	5	6	6	4	5	7	7	14	16	10	15	19	114
% Aspirin Appropriately Administered	100%	100%	100%	100%	100%	86%	100%	100%	100%	100%	100%	100%	99%
% 12 Lead EKG Completed	100%	100%	100%	100%	100%	100%	100%	100%	100%	100%	100%	100%	100%
% Patient Transport to STEMI Center	100%	100%	100%	100%	100%	100%	100%	100%	100%	100%	100%	100%	100%
Number of Required Elements	15	18	18	12	15	21	21	42	48	30	45	57	342
Number of Completed Required Elements	15	18	18	12	15	20	21	42	48	30	45	57	341
% Completed Required Elements	100%	100%	100%	100%	100%	95%	100%	100%	100%	100%	100%	100%	100%

STEMI (FY 2017) Measure	Q1 FY 2017	Q2 FY 2017	Q3 FY 2017	Q4 FY 2017	FYE 2017
Number of Identified STEMI Cases Reviewed	17	16	37	44	114
Aspirin Appropriately Administered	17	15	37	44	113
12 Lead EKG Completed	17	16	37	44	114
Patient Transport to STEMI Center	17	16	37	44	114
% Aspirin Appropriately Administered	100%	94%	100%	100%	99%
% 12 Lead EKG Completed	100%	100%	100%	100%	100%
% Patient Transport to STEMI Center	100%	100%	100%	100%	100%
Number of Required Elements	51	48	111	132	342
Number of Completed Required Elements	51	47	111	132	341
% Completed Required Elements	100%	98%	100%	100%	100%

District of Columbia Fire and EMS Department
FY 2017 EMS CQI Case Review (Stroke Patients)

Stroke (FY 2017) Measure	OCT 2016	NOV 2016	DEC 2016	JAN 2017	FEB 2017	MAR 2017	APR 2017	MAY 2017	JUN 2017	JUL 2017	AUG 2017	SEP 2017	FYE 2017
Number of Identified Stroke Cases Reviewed	68	44	63	70	67	49	45	48	37	29	64	74	658
Stroke Screening Exam Completed	68	44	62	69	67	49	45	39	31	29	64	74	641
BGL Obtained and Recorded	66	44	62	69	67	46	43	47	36	29	64	74	647
Patient Transport to Stroke Center	59	38	55	67	65	46	44	45	34	29	64	74	620
% Stroke Screening Completed	100%	100%	98%	99%	100%	100%	100%	81%	84%	100%	100%	100%	97%
% BGL Obtained and Recorded	97%	100%	98%	99%	100%	94%	96%	98%	97%	100%	100%	100%	98%
% Patient Transport to Stroke Center	87%	86%	87%	96%	97%	94%	98%	94%	92%	100%	100%	100%	94%
Number of Required Elements	204	132	189	210	201	147	135	144	111	87	192	222	1,974
Number of Completed Required Elements	193	126	179	205	199	141	132	131	101	87	192	222	1,908
% Completed Required Elements	95%	95%	95%	98%	99%	96%	98%	91%	91%	100%	100%	100%	97%

Stroke (FY 2017) Measure	Q1 FY 2017	Q2 FY 2017	Q3 FY 2017	Q4 FY 2017	FYE 2017
Number of Identified Stroke Cases Reviewed	175	186	130	167	658
Stroke Screening Exam Completed	174	185	115	167	641
BGL Obtained and Recorded	172	182	126	167	647
Patient Transport to Stroke Center	152	178	123	167	620
% Stroke Screening Completed	99%	99%	88%	100%	97%
% BGL Obtained and Recorded	98%	98%	97%	100%	98%
% Patient Transport to Stroke Center	87%	96%	95%	100%	94%
Number of Required Elements	525	558	390	501	1,974
Number of Completed Required Elements	498	545	364	501	1,908
% Completed Required Elements	95%	98%	93%	100%	97%

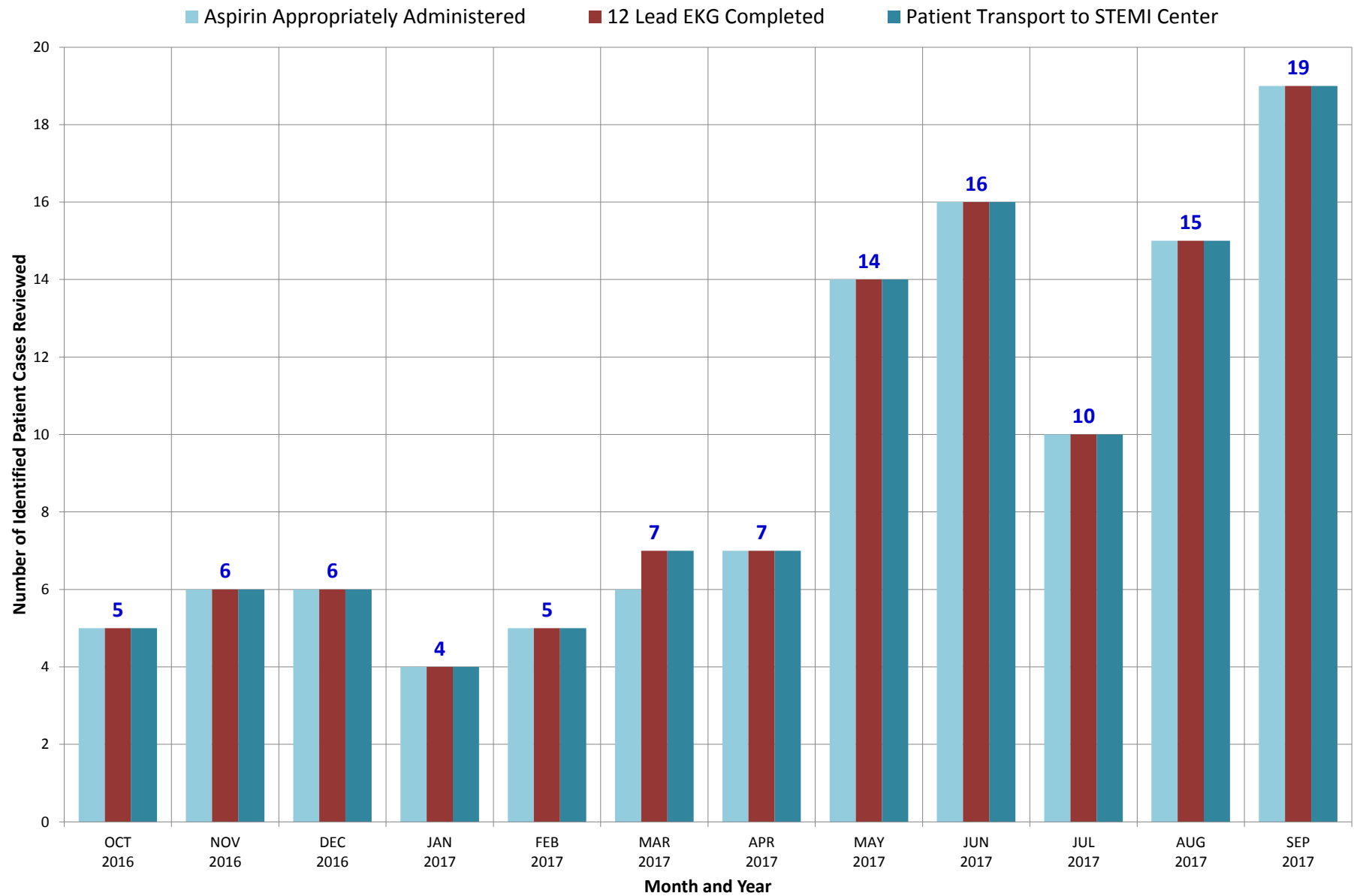
District of Columbia Fire and EMS Department
FY 2017 EMS CQI Case Review (Trauma Patients)

Trauma (FY 2017) Measure	OCT 2016	NOV 2016	DEC 2016	JAN 2017	FEB 2017	MAR 2017	APR 2017	MAY 2017	JUN 2017	JUL 2017	AUG 2017	SEP 2017	FYE 2017
Number of Identified Trauma Cases Reviewed	36	37	15	35	35	29	18	34	47	28	38	38	390
Trauma Assessment Exam Completed	36	37	14	35	29	29	17	34	47	28	38	38	382
Appropriate Incident Scene Time for Case	24	22	8	10	16	9	10	14	24	13	23	24	197
Patient Transport to Trauma Center	36	37	15	35	29	29	18	34	47	28	38	38	384
% Trauma Assessment Completed	100%	100%	93%	100%	83%	100%	94%	100%	100%	100%	100%	100%	98%
% Appropriate Incident Scene Time	67%	59%	53%	29%	46%	31%	56%	41%	51%	46%	61%	63%	51%
% Patient Transport to Trauma Center	100%	100%	100%	100%	83%	100%	100%	100%	100%	100%	100%	100%	98%
Number of Required Elements	108	111	45	105	105	87	54	102	141	84	114	114	1,170
Number of Completed Required Elements	96	96	37	80	74	67	45	82	118	69	99	100	963
% Completed Required Elements	89%	86%	82%	76%	70%	77%	83%	80%	84%	82%	87%	88%	82%

Trauma (FY 2017) Measure	Q1 FY 2017	Q2 FY 2017	Q3 FY 2017	Q4 FY 2017	FYE 2017
Number of Identified Trauma Cases Reviewed	88	99	99	104	390
Trauma Assessment Exam Completed	87	93	98	104	382
Appropriate Incident Scene Time for Case	54	35	48	60	197
Patient Transport to Trauma Center	88	93	99	104	384
% Trauma Assessment Completed	99%	94%	99%	100%	98%
% Appropriate Incident Scene Time	61%	35%	48%	58%	51%
% Patient Transport to Trauma Center	100%	94%	100%	100%	98%
Number of Required Elements	264	297	297	312	1,170
Number of Completed Required Elements	229	221	245	268	963
% Completed Required Elements	87%	74%	82%	86%	82%

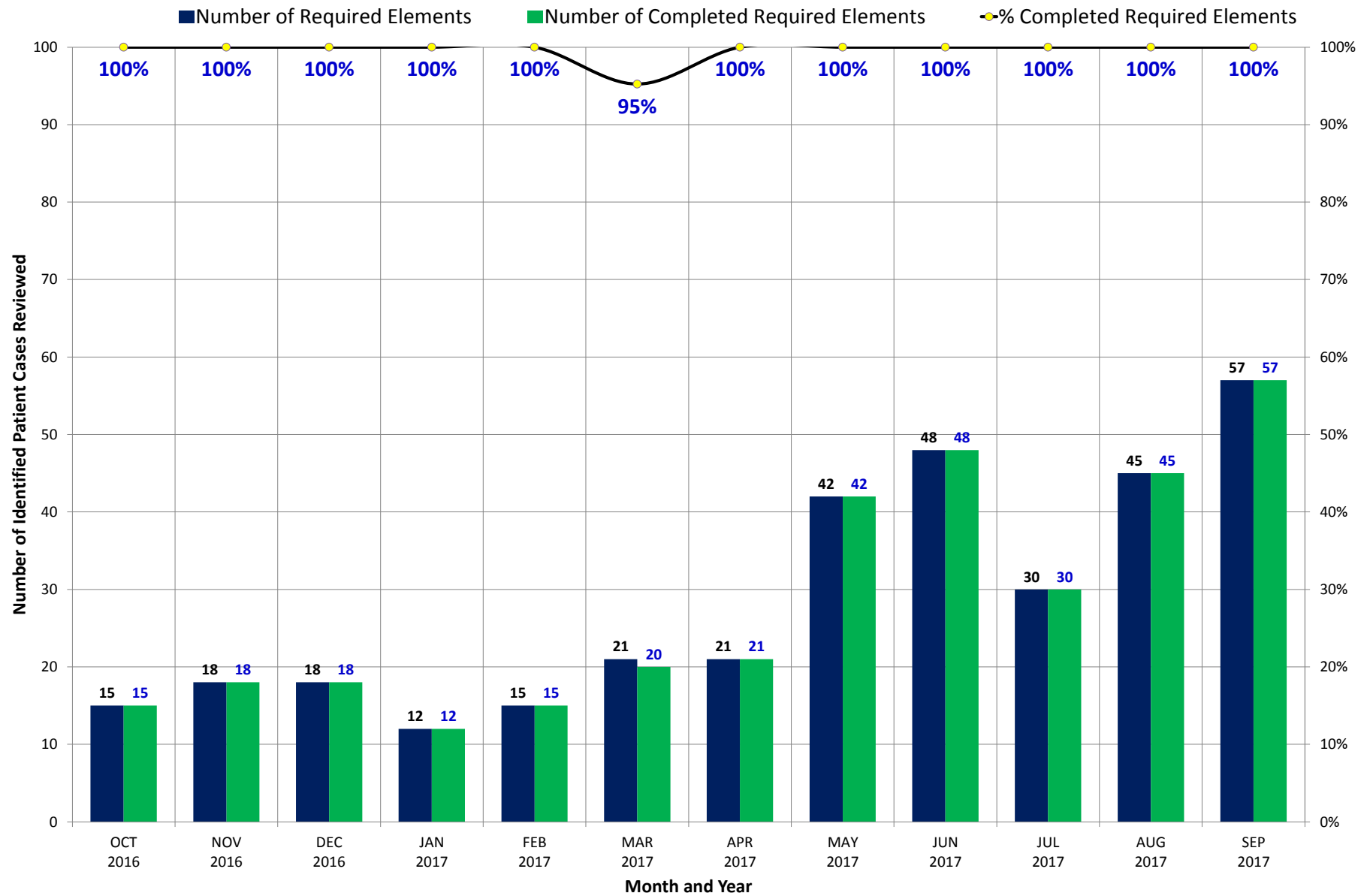
District of Columbia Fire and Emergency Medical Services Department

EMS CQI Case Review: **STEMI** Patients (FY 2017)



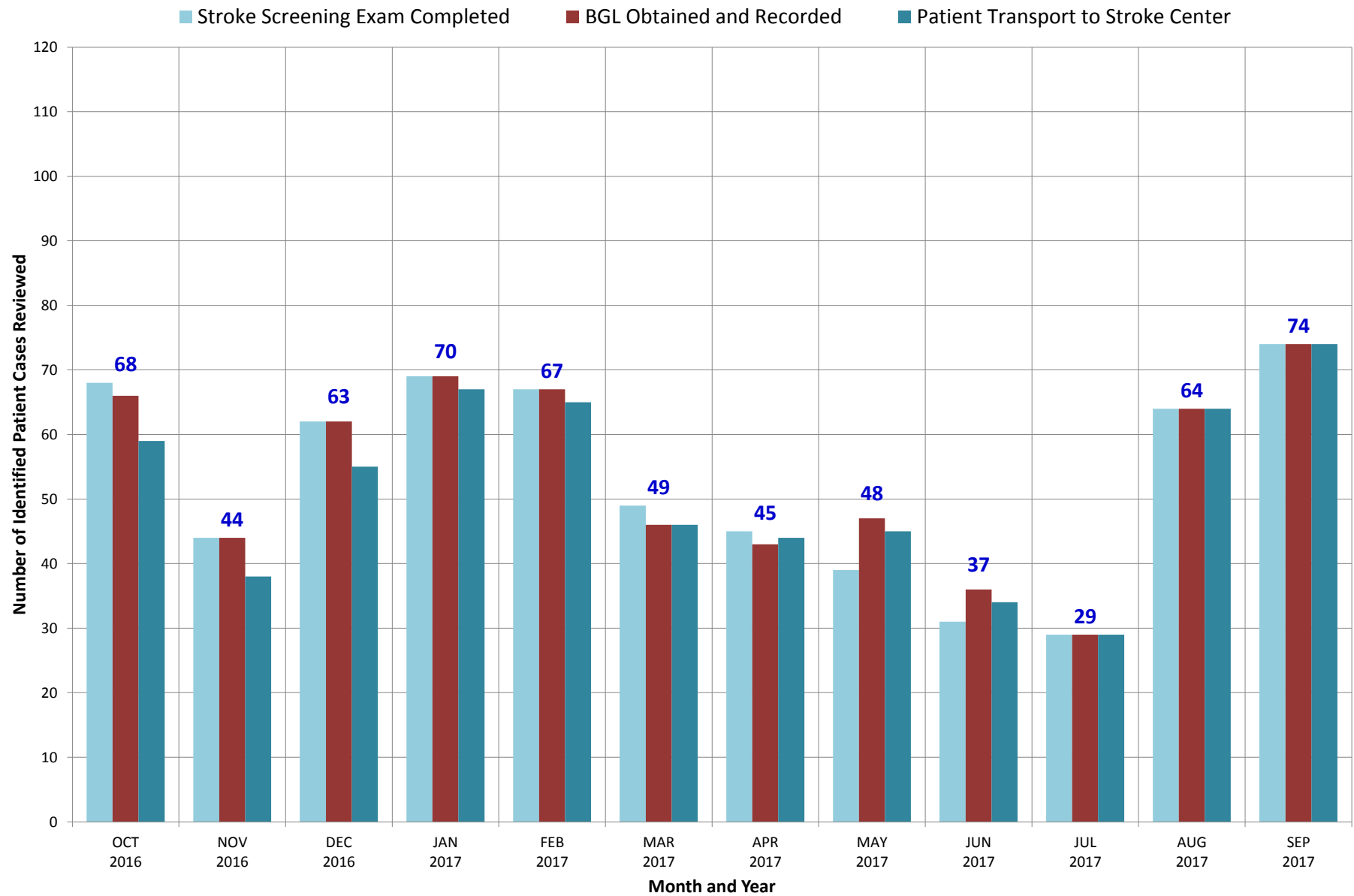
District of Columbia Fire and Emergency Medical Services Department

EMS CQI Case Review: **STEMI** Patients (FY 2017)



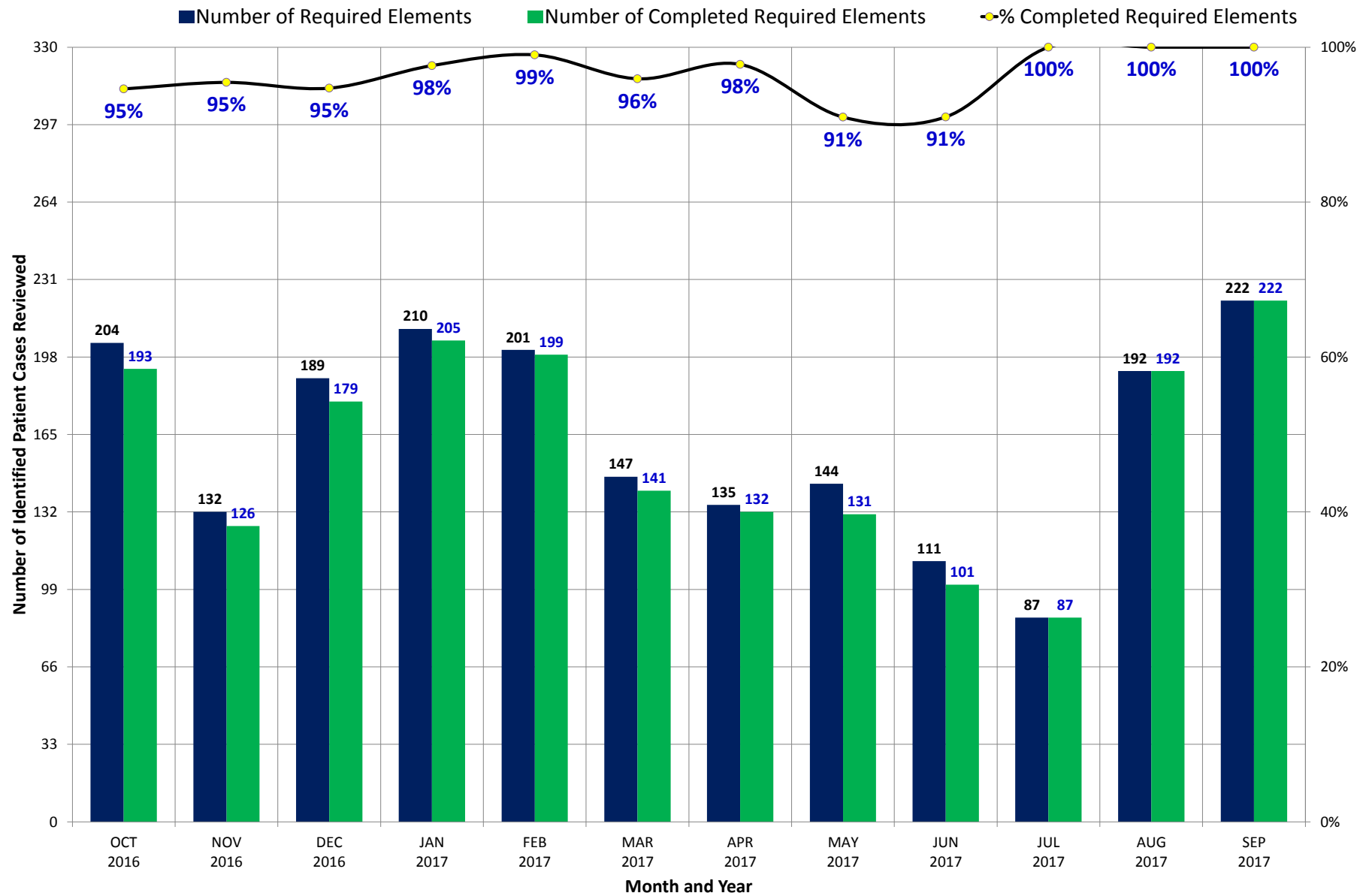
District of Columbia Fire and Emergency Medical Services Department

EMS CQI Case Review: **Stroke** Patients (FY 2017)



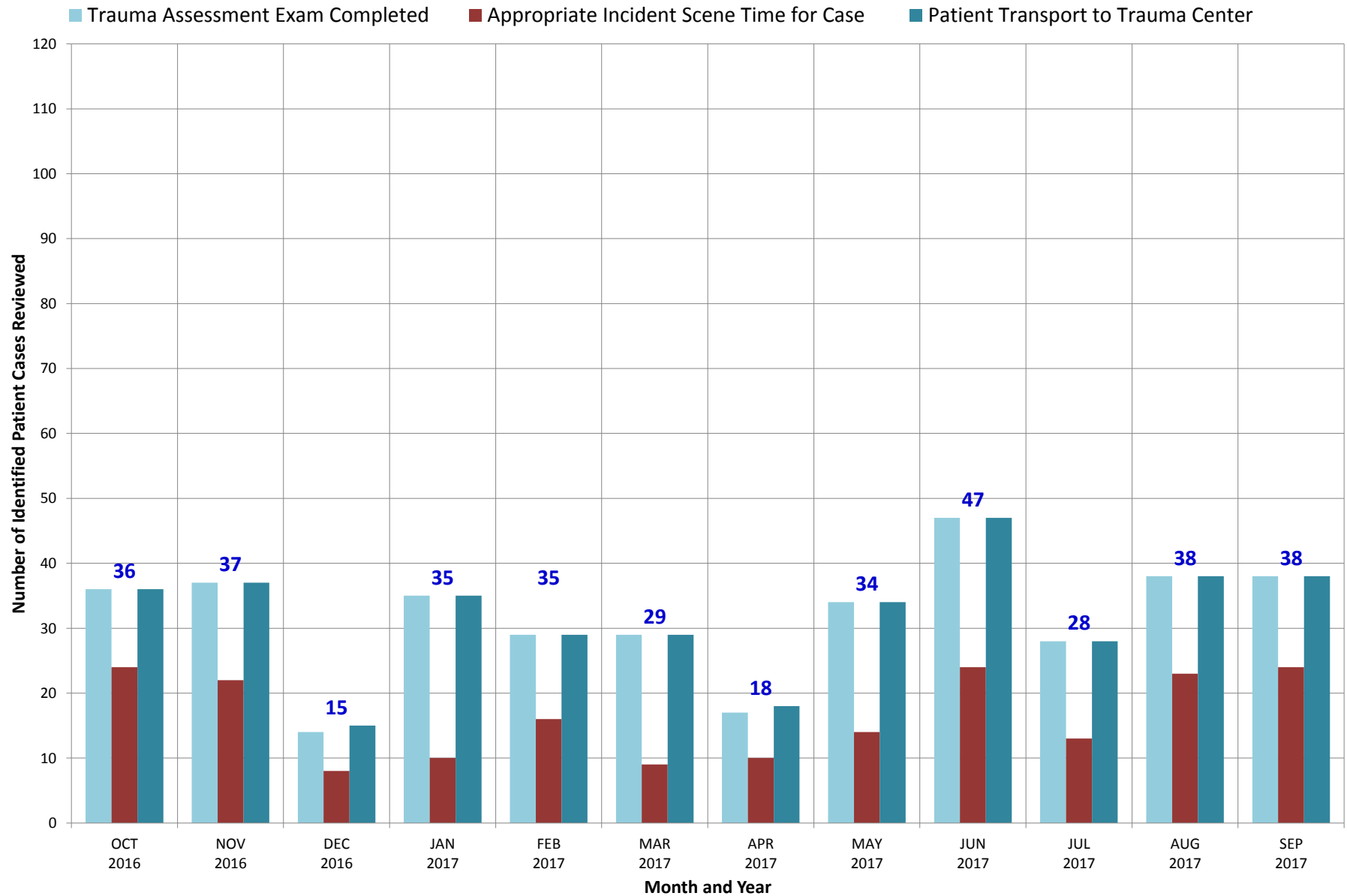
District of Columbia Fire and Emergency Medical Services Department

EMS CQI Case Review: **Stroke** Patients (FY 2017)



District of Columbia Fire and Emergency Medical Services Department

EMS CQI Case Review: **Trauma** Patients (FY 2017)



District of Columbia Fire and Emergency Medical Services Department

EMS CQI Case Review: **Trauma** Patients (FY 2017)

